

Illinois Job Index: MSA Report



Illinois Coalition for Jobs, Growth & Prosperity

Release
3/x/2007

data
Jan 1990 / Jan 2007

Issue
10.1

www.jobsillinois.us

As a companion to the February 2007 Illinois Job Index that reports a Positive **Rating**, this MSA Report provides a localized picture on Illinois job growth and allows for comparisons between local economies, Illinois, Nation and Rest of the Midwest.

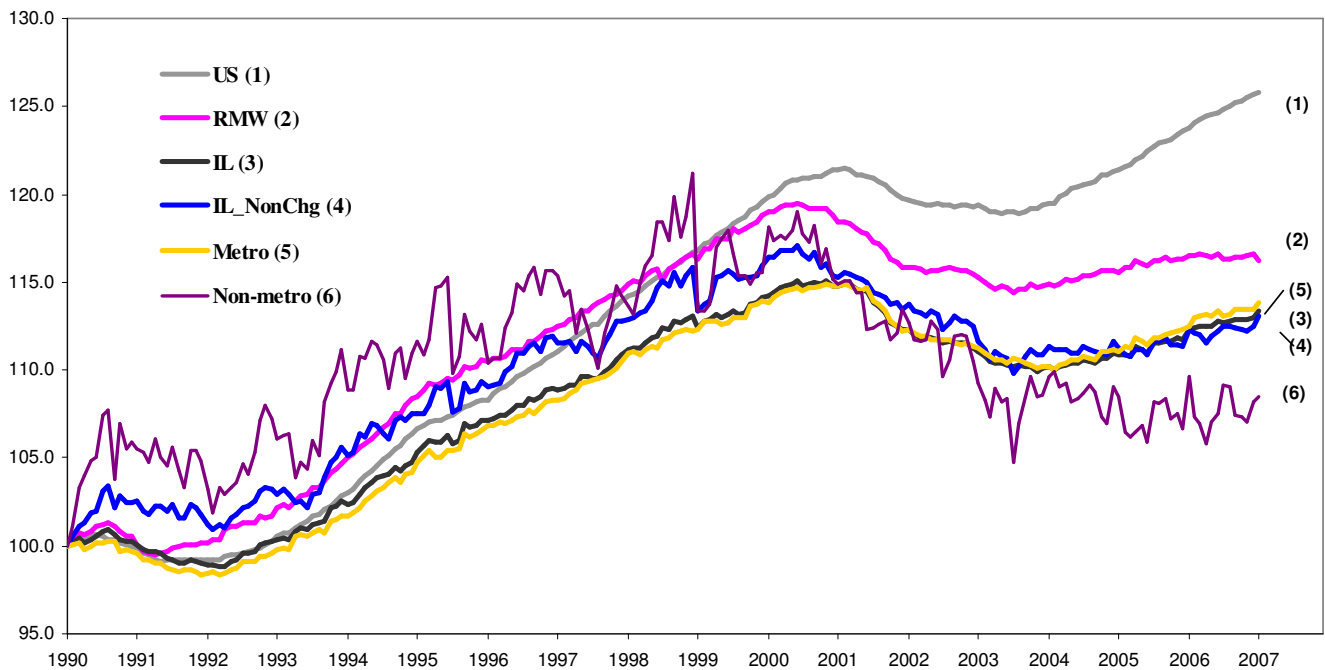
February 2007	Total non-farm employment	Dec 2006 – Jan 2007		Last 12 months	
		Growth Rate (%)	Number of Jobs	Growth Rate (%)	Number of Jobs
	Illinois non-Metro (Rural)	+0.33	+1700	-1.00	-5,200
	Illinois non-Chicago (Downstate)	+0.50	+8,400	+0.63	+10,700
	Illinois Metro	+0.31	+17,100	+1.15	+61,800
	Illinois	+0.32	+18,800	+0.96	+56,600
	Rest of Midwest (RMW)	-0.29	- 56,800	- 0.21	- 42,200
	Nation	+0.11	+146,000	+1.63	+2,203,000

The Illinois Coalition for Jobs, Growth & Prosperity publishes the monthly Illinois Job Index and MSA Report as tools for elected officials, policy leaders and the public. We can better understand the Illinois economy and business climate by comparing and measuring Illinois employment growth rates against those of the Rest of the Midwest (RMW: Indiana, Iowa, Michigan, Missouri, Ohio and Wisconsin) and the Nation. Data and analysis is provided by the Illinois Economic Observatory / Regional Economics Applications Laboratory, University of Illinois. The MSA data (unless noted) were seasonally adjusted to be consistent with state totals.

Talking Points

<p>State, Downstate & Metro</p>	<ul style="list-style-type: none"> By adding 18,800 jobs Illinois recorded a 0.32% growth in January which is the highest since February 2006. According to revised data, Illinois maintained a positive rating for third consecutive month in January. Downstate added 8,400 jobs (0.50%) in January thereby maintaining a positive rating for two consecutive months. The counterpart, Chicago on the other hand turned around last month's slow growth by adding 10,400 new jobs (0.24%) in January. Simultaneous modest growth in both Chicago and Downstate, observed for the first time after January 2006, can be largely credited for the good performance of Illinois in January. The Metro Non-metro picture, however, was different. While Metro recovered from a zero growth by a gain of 17,100 jobs (0.31%), Non-metro experienced a drop in growth rate by adding 1,700 jobs (0.33%) in January at a rate that is a third of their last month's contribution. In terms of 12-month's job creation, Metro did quite a better job than Non-metro and so did Chicago compared to Non-Chicago. Chicago created more than four times as many jobs as Non-Chicago and Metro added 61,800 jobs while Non-metro had a net loss of 5,200 jobs during last 12-months.
<p>MSA page (2-3)</p>	<ul style="list-style-type: none"> Kankakee and Metro-East had notable performances in January by growing at a rate of 1.61% and 1.59% in January. Of those, Kankakee recovered from a zero growth in December. In terms of number of jobs created Chicago added the greatest number, 10,400, followed by Metro-East which added 4,000 jobs. These two MSAs contributed 76% of the growth in Illinois payroll in January. Despite notable growth of Illinois in January only Bloomington-Normal registered a net loss of 200 jobs. Decatur, however, registered a zero growth which is an improvement from December when it lost jobs at 0.18% rate. In January, apart from Chicago, Kankakee and Decatur three other MSAs in Illinois recovered from a net loss. Those are Davenport-Rock Island-Moline (-0.11 to 0.27), Peoria (-0.27 to 0.16%) and Rockford (-0.31 to 0.25). Over last 12-month period among the MSAs Rockford grew fastest at 2.59%. The largest number of jobs, 45,900, however, was added by Chicago followed by Rockford which added 4,000 jobs in that period. None of the MSAs experienced a net loss over the 12-month period, for the first time since May 2000.

Total non-farm Employment growth rate Jan 1990 – Jan 2007



Talking Points

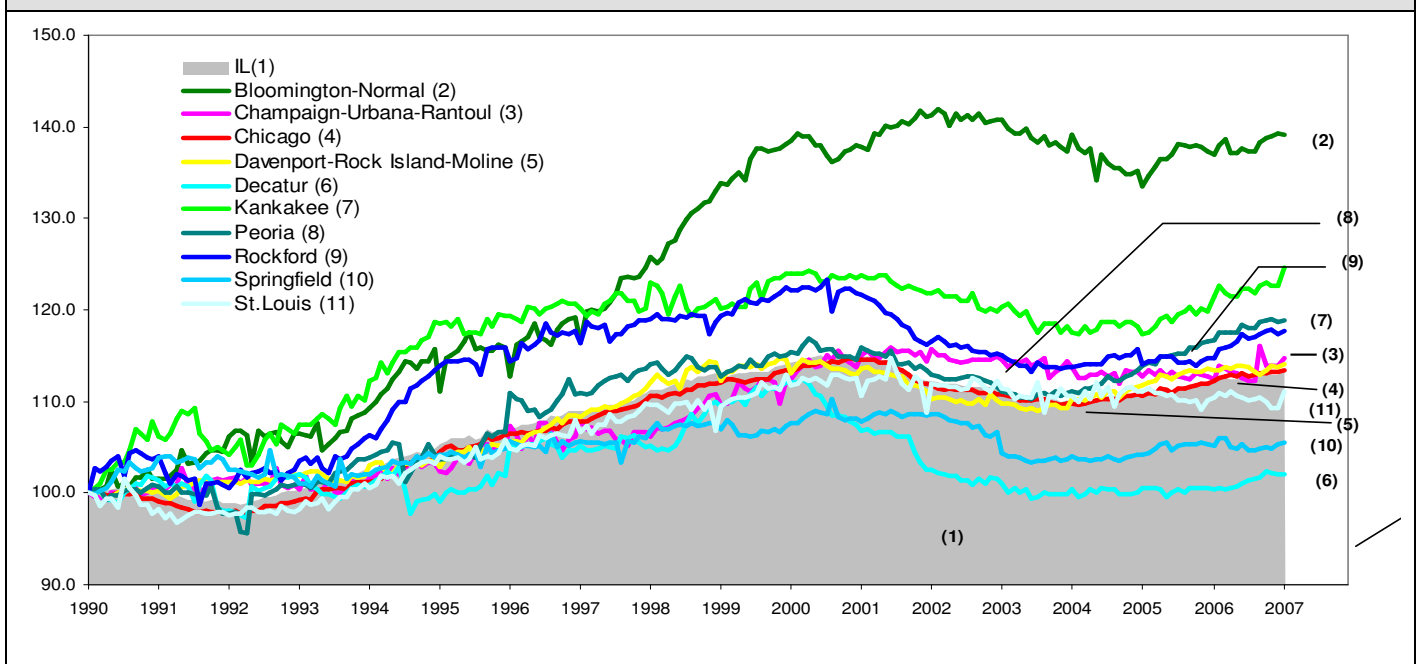
State, Downstate & Metro

- The 0.32% growth rate for Illinois in January is evident in the sudden upward movement of the curve compared to moderate slope in recent times.
- Since Metro areas contributed most of the job growth in Illinois in January as in recent months, the slope of Metro's curve quite resembles that of Illinois. Employment curve for both Non-metro and Downstate are on the rise for the last two months.
- Net 0.96% growth of Illinois over last 12-month period compared to RMW's 0.21% loss narrowed the gap between the two job indices.
- After slow growth for last six months, Metro had a 0.31% growth in January.

By MSA

Total non-farm employment Seasonally adjusted unless noted*	Dec 2006 – Jan 2007			Last 12 months	
	Change compared to Illinois	Growth Rate %	Number of Jobs	Growth Rate %	Number of Jobs
Bloomington-Normal (B-N)	-	-0.22	- 200	1.45	1300
Champaign-Urbana (C-U-R)	+	0.62	700	2.07	2300
Chicago	-	0.24	10,400	1.09	45,900
Davenport-Rock Island-Moline (D-R-M)	-	0.27	500	0.59	1,100
Decatur	-	0.00	0	1.66	900
Kankakee	+	1.59	700	2.53	1,100
Peoria	-	0.16	300	1.81	3,300
Rockford	-	0.25	400	2.59	4,000
Springfield	-	0.27	300	0.36	400
Metro-East*	+	1.69	4,000	0.63	1,500
Illinois		0.32	18,800	0.96	56,600

Total non-farm Employment growth rate Jan 1990 – Jan 2007



Shaded area on above chart represents Illinois growth.

MSA DESCRIPTION: **Bloomington-Normal (B-N):** McLean Co. **Champaign-Urbana (C-U-R):** Champaign Co., Ford Co. & Piatt Co. **Chicago:** Cook Co. IL, DeKalb Co. IL, DuPage Co. IL, Grundy Co. IL, Kane Co. IL, Kendall Co. IL, Lake Co. IL, McHenry Co. IL, Will Co. IL & Kenosha Co. WI **Davenport-Moline-Rock Island (D-R-M):** Henry Co. IL, Mercer Co. IL, Rock Island Co. IL & Scott Co. IA **Decatur:** Macon Co. **Kankakee:** Kankakee Co. **Metro-East:** Bond Co., Calhoun Co., Clinton Co., Jersey Co., Macoupin Co., Madison Co., Monroe Co. & St. Clair Co. **Peoria-Pekin (Peoria):** Marshall Co., Peoria Co., Stark Co., Tazewell Co. & Woodford Co. **Rockford:** Boone Co. & Winnebago Co. **Springfield:** Menard Co. & Sangamon Co.

The MSA data (unless noted) were seasonally adjusted to be consistent with state totals.

ABOUT: The Illinois Coalition for Jobs, Growth & Prosperity is a not-for-profit 501-c-4 organization. Coalition founding members include the Chicagoland Chamber of Commerce, the Illinois Business Roundtable, the Illinois Civil Justice League, the Illinois Manufacturers' Association, and the Illinois State Chamber of Commerce. Established to provide Illinois voters with information about government-related issues that have a direct effect on jobs, the Coalition represents firms employing more than a million Illinois workers.