

Illinois

Job Index:

MSA Report



Illinois Coalition for Jobs, Growth & Prosperity

Release
1/x/2007

data
Jan 1990 / Dec 2006

Issue
10.1

www.jobsillinois.us

As a companion to the January 2007 Illinois Job Index that reports a Positive **Rating**, this MSA Report provides a localized picture on Illinois job growth and allows for comparisons between local economies, Illinois, Nation and Rest of the Midwest.

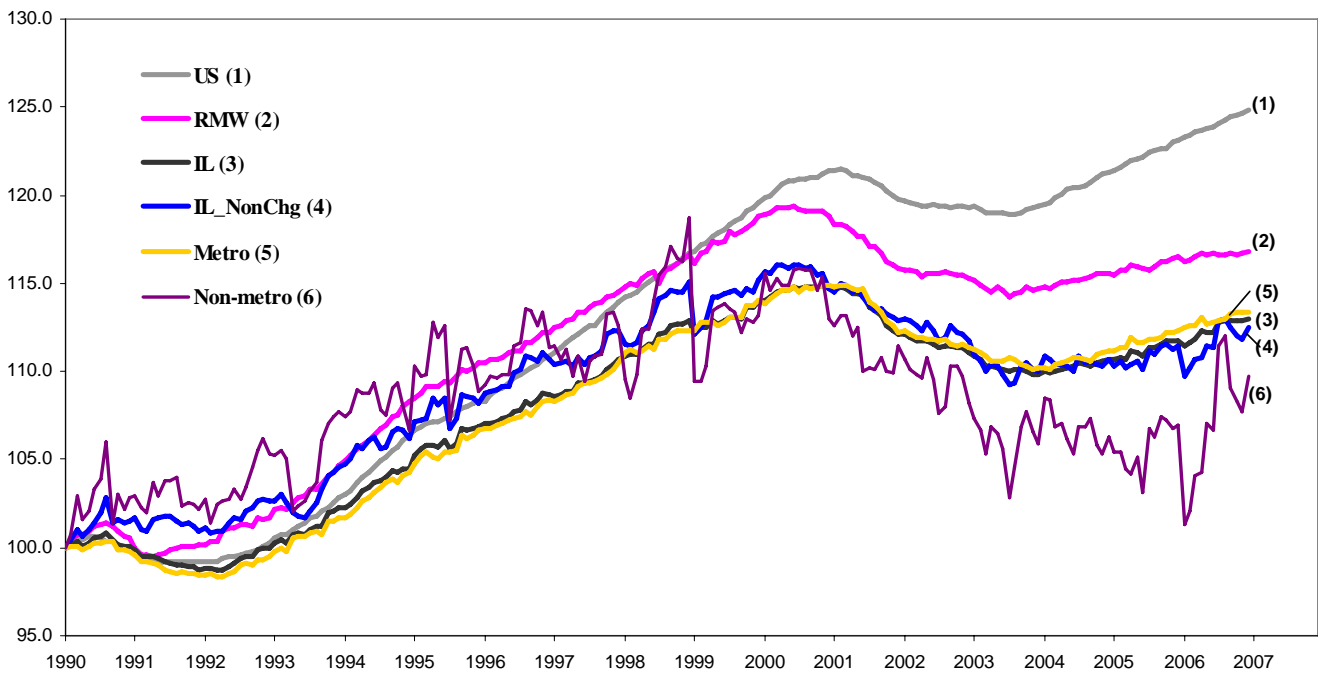
January 2007	Total non-farm employment	Nov 2006 – Dec 2006		Last 12 months	
		Growth Rate (%)	Number of Jobs	Growth Rate (%)	Number of Jobs
	Illinois non-Metro (Rural)	+1.82	9,500	+2.53	+13,100
	Illinois non-Chicago (Downstate)	+0.54	9,200	+0.88	+14,800
	Illinois Metro	-0.02	-1,200	+0.96	+51,800
	Illinois	+0.12	+8,300	+1.10	+64,900
	Rest of Midwest (RMW)	+0.11	+21,100	+0.28	+55,800
	Nation	+0.12	+167,000	+1.37	+1,838,000

The Illinois Coalition for Jobs, Growth & Prosperity publishes the monthly Illinois Job Index and MSA Report as tools for elected officials, policy leaders and the public. We can better understand the Illinois economy and business climate by comparing and measuring Illinois employment growth rates against those of the Rest of the Midwest (RMW: Indiana, Iowa, Michigan, Missouri, Ohio and Wisconsin) and the Nation. Data and analysis is provided by the Illinois Economic Observatory / Regional Economics Applications Laboratory, University of Illinois. The MSA data (unless noted) were seasonally adjusted to be consistent with state totals.

Talking Points

State, Downstate & Metro	<ul style="list-style-type: none"> ▪ Addition of 8,300 jobs in Illinois payroll in December, after successive periods of slow growth and decline since August 2006, injected some positive news into the state job market. The Illinois Jobs index, as a result, reached the maximum value since August 2001. ▪ Annual gain of 64,900 jobs in Illinois recorded by the end of 2006 was the highest since 1999 whereas the lowest gain in this period was in 2001. ▪ Downstate added 9,200 jobs (0.54%) in December after three consecutive months of job loss. In contrast, Chicago, the counterpart, registered net 900 job loss (-0.02%) in December after six months of steady growth. ▪ During December a similar U-turn was observed in the metro non-metro scenario as well. While metro areas, after six months of continued job addition, lost 1,200 jobs (-0.02%), the non-metro part added 9,500 (0.14%) after three months of net job loss. ▪ Contrary to the monthly change situation in December, the yearly figure shows that Chicago created twice as many jobs as Downstate and similarly, Metro areas created about three times more jobs than non-metro in 2006.
MSA page (2-3)	<ul style="list-style-type: none"> ▪ Metro East was the only MSA to improve its performance in December by adding 700 jobs up from a 1,900 loss in previous month. Among others, Bloomington-Normal, however, added 200 jobs to maintain a positive rating. While two others had zero growth, the remaining six MSA registered net loss. ▪ Chicago showed a decline in performance by losing 900 jobs (-0.02%) in December as opposed to adding 2,500 jobs (0.06%) the previous month. Peoria followed Chicago by losing 500 jobs (-0.28%) down from 400 gain (0.22) in November. ▪ By the end of 2006, the highest index gain since 1990 was recorded for Bloomington-Normal at 138.0 followed by Kankakee at 118.7. ▪ During 2006, Rockford performed best among the MSAs with highest 1.62% growth rate, whereas Chicago created the largest number of jobs (50,100) at 1.19%. ▪ Metro-East, in spite of a good performance in December, registered the largest job loss (1,700) in 2006 followed by Bloomington –Normal and Davenport –Rock Island – Moline which respectively lost 700 and 200 net jobs in that year. All other MSA posted positive rating except Decatur which did not show any change in payroll in 2006.

Total non-farm Employment growth rate Jan 1990 - Dec 2006



Talking Points

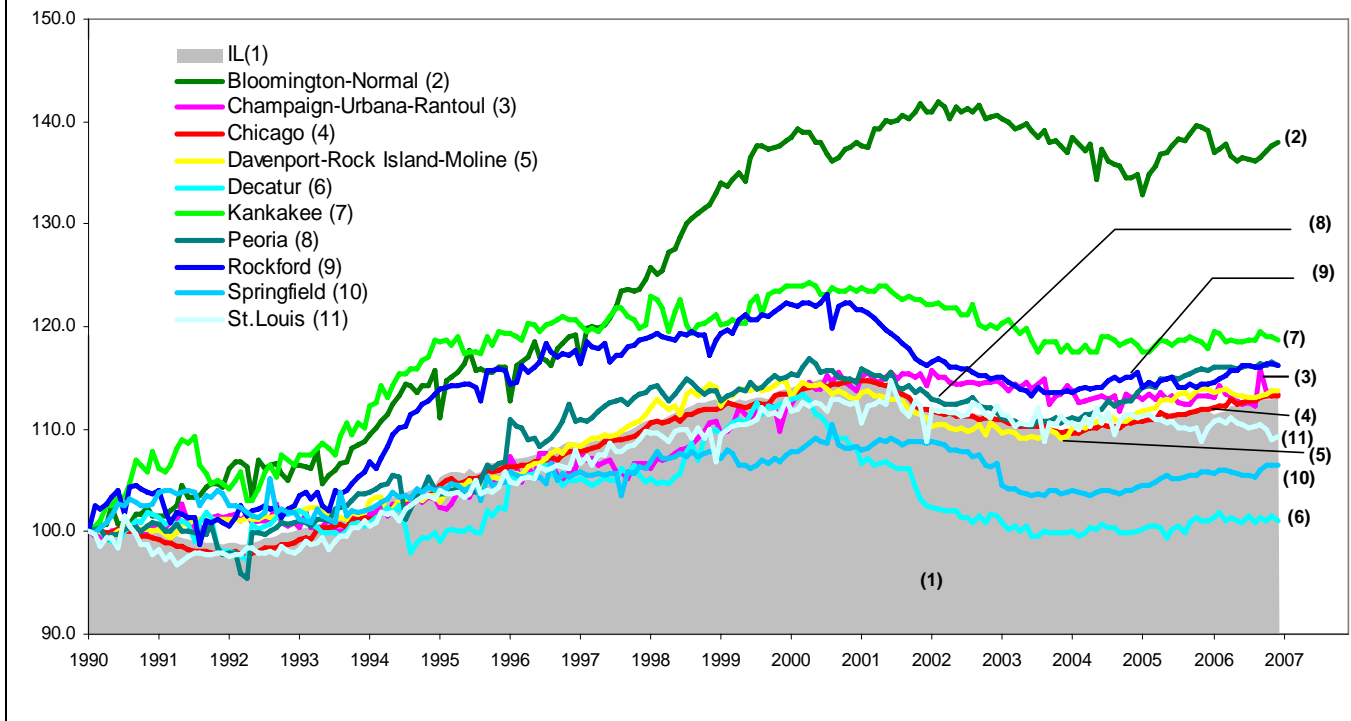
State, Downstate & Metro

- The growth curve for Illinois, due to a 0.14% rate rose faster in December compared to last four months.
- In December Both Non-metro and Downstate returned from a downward trend by growing at 1.82% and 0.54% respectively. This largely contributed to the net job growth of Illinois while Chicago and Metro areas as a whole experienced net loss.
- Faster growth of Illinois in 2006 compared to RMW during 2006 narrowed the gap between the two job indices.
- Net 0.02% loss in December pulled down the growth performance of Metro which was on the rise since June 2006.

By MSA

Total non-farm employment Seasonally adjusted unless noted*	Nov 2006 - Dec 2006			Last 12 months	
	Change compared to Illinois	Growth Rate %	Number of Jobs	Growth Rate %	Number of Jobs
Bloomington-Normal (B-N)	+	0.22	200	- 0.77	- 700
Champaign-Urbana (C-U-R)	-	- 0.27	- 300	0.09	100
Chicago	-	- 0.02	- 900	1.19	50,100
Davenport-Rock Island-Moline (D-R-M)	-	0.00	0	- 0.11	- 200
Decatur	-	- 0.36	- 200	0.00	0
Kankakee	-	- 0.23	- 100	0.71	300
Peoria	-	- 0.28	- 500	0.39	700
Rockford	-	- 0.06	- 100	1.62	2,500
Springfield	-	0.00	0	0.62	700
Metro-East*	+	0.30	700	- 0.71	-1,700
Illinois		0.14	8,300	1.10	64,900

Total non-farm Employment growth rate Jan 1990 – Dec 2006



Shaded area on above chart represents Illinois growth.

MSA DESCRIPTION: **Bloomington-Normal (B-N):** McLean Co. **Champaign-Urbana (C-U-R):** Champaign Co., Ford Co. & Piatt Co. **Chicago:** Cook Co. IL, DeKalb Co. IL, DuPage Co. IL, Grundy Co. IL, Kane Co. IL, Kendall Co. IL, Lake Co. IL, McHenry Co. IL, Will Co. IL & Kenosha Co. WI **Davenport-Moline-Rock Island (D-R-M):** Henry Co. IL, Mercer Co. IL, Rock Island Co. IL & Scott Co. IA **Decatur:** Macon Co. **Kankakee:** Kankakee Co. **Metro-East:** Bond Co., Calhoun Co., Clinton Co., Jersey Co., Macoupin Co., Madison Co., Monroe Co. & St. Clair Co. **Peoria-Pekin (Peoria):** Marshall Co., Peoria Co., Stark Co., Tazewell Co. & Woodford Co. **Rockford:** Boone Co. & Winnebago Co. **Springfield:** Menard Co. & Sangamon Co.

The MSA data (unless noted) were seasonally adjusted to be consistent with state totals.

ABOUT: The Illinois Coalition for Jobs, Growth & Prosperity is a not-for-profit 501-c-4 organization. Coalition founding members include the Chicagoland Chamber of Commerce, the Illinois Business Roundtable, the Illinois Civil Justice League, the Illinois Manufacturers' Association, and the Illinois State Chamber of Commerce. Established to provide Illinois voters with information about government-related issues that have a direct effect on jobs, the Coalition represents firms employing more than a million Illinois workers.