

Illinois Job Index: MSA Report



Illinois Coalition for Jobs, Growth & Prosperity

Release 5/2/2008	data Jan 1990 / Mar 2008	Issue 11.4	www.jobsillinois.us
----------------------------	------------------------------------	----------------------	----------------------------

As a companion to the April 2008 Illinois Job Index that reports a **Negative** Rating, this MSA Report provides a localized picture on Illinois job growth and allows for comparisons between local economies, Illinois, Nation and Rest of the Midwest.

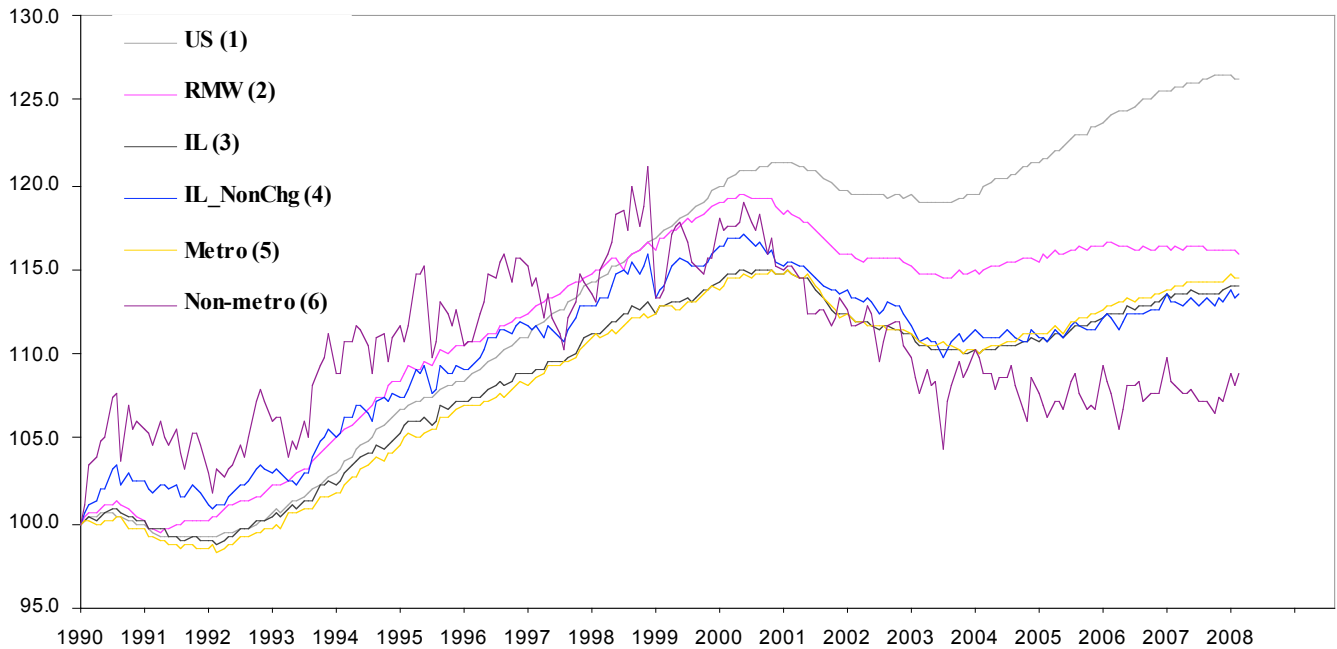
April 2008	Total non-farm employment	Feb 2008 – Mar 2008		Last 12 months	
		Growth Rate (%)	Number of Jobs	Growth Rate (%)	Number of Jobs
	Illinois non-Metro (Rural)	+0.62	+3,200	+0.60	+3,100
	Illinois non-Chicago (Downstate)	+0.09	+1,500	+0.24	+4,100
	Illinois Metro	-0.09	-4,800	+0.34	+18,600
	Illinois	-0.03	-1,600	+0.36	+21,700
	Rest of Midwest (RMW)	-0.17	-33,200	-0.45	-88,700
	Nation	-0.06	-80,000	+0.39	+536,000

The Illinois Coalition for Jobs, Growth & Prosperity publishes the monthly Illinois Job Index and MSA Report as tools for elected officials, policy leaders and the public. We can better understand the Illinois economy and business climate by comparing and measuring Illinois employment growth rates against those of the Rest of the Midwest (RMW: Indiana, Iowa, Michigan, Missouri, Ohio and Wisconsin) and the Nation. Data and analysis is provided by the Illinois Economic Observatory / Regional Economics Applications Laboratory, University of Illinois. The MSA data (unless noted) were seasonally adjusted to be consistent with state totals.

Talking Points

<p>State, Downstate & Metro</p>	<ul style="list-style-type: none"> Illinois lost 1,600 jobs at -0.03% in March 2008, declining from a revised 0.12% loss in February. This is the second time in 2008 that Illinois posted a negative growth. While the overall performance of Illinois was on negative, the major geographic divisions, Chicago-Downstate or Metro-Non-Metro registered mixed ratings in March. Metro areas also showed notable variation in performance. Downstate added 1,500 jobs at 0.09% in March, up from a revised 5,500 loss at -0.32% in February. Chicago, on the other hand lost 3,100 jobs at -0.07%, as opposed to a revised 1,900 loss in February at -0.04%. This is, however, the largest number of jobs lost by Chicago after February 2007. By losing 4,800 jobs at -0.09% down from 4,500 job losses in February, Illinois Metro posted a negative rating for second consecutive month in 2008. This is for the first time since June 2006 that Illinois Metro lost jobs two months in a row. Non-metro, however, added 3,200 jobs at 0.62% compared to a 2,900 revised loss in February. Over the last 12-months, Illinois registered a 0.36% growth by adding 21,700 jobs. This is the smallest number of jobs added by Illinois over any 12-month period since September 2004. In terms of 12-months aggregated account, Metro posted a 0.34% growth by adding 18,600 jobs whereas Non-metro gained 3,100 jobs at 0.60% during the same period. Chicago, on the other hand added 17,600 jobs at 0.41% as opposed to 4,100 jobs added by Downstate at 0.24%.
<p>MSA page (2-4)</p>	<ul style="list-style-type: none"> Illinois Metro posted a negative 0.09% growth in March by losing 4,800 jobs. Among all MSAs in Illinois, seven posted net losses, two recorded net gains and Peoria remained unchanged. Metro-East added the highest number of jobs (1,400) followed by Kankakee which added 100 jobs. In terms of growth rates, three MSAs posted net improvements from February whereas the remaining seven MSAs declined in performance. Best gain in March compared to February was recorded for Metro-East (-0.29% to 0.59%) followed by Peoria (-0.47% to 0%) Among the MSAs, Metro-East added the largest number of jobs (1,400 at 0.59%) whereas Chicago lost the most jobs (3,100 at -0.07%). This is the highest number of jobs lost by Chicago since February 2007. Over the last 12-months, Kankakee grew fastest (1.13%) adding 500 Jobs followed by Peoria which added 1,800 jobs at 0.96%. Among three MSA that posted net loss over last 12-month Metro-East posted highest losses - 1,100 at -0.46%. Chicago contributed the largest number of jobs (17,600) in that period at 0.41%. This is, however, the smallest contribution by Chicago over any 12-month period since September 2004.

Total non-farm Employment growth Jan 1990 – Mar 2008



Talking Points

State, Downstate & Metro

- While Illinois grew at 0.05% and 0.09% on average during 2007 and 2006 respectively; the average for 2008 to date is 0.07%.
- The average growth rate for Metro over the last 12-month period was 0.03%. In contrast, non-metro recorded a net 0.05% average gain during the same period though marked with noticeable fluctuations.
- Contrary to the aggregate trend since January 1990, Illinois did better than the RMW in terms of yearly aggregated trend both in 2006, 2007 and in 2008 to date.
- Downstate, registered a 0.02% average growth rate over the last 12-month compared to average 0.09% gain in 2006 and 0.04% growth in 2007.

By MSA

Total non-farm employment Seasonally adjusted unless noted*	Feb 2008 –Mar 2008			Last 12 months	
	Change compared to Illinois	Growth Rate %	Number Of Jobs	Growth Rate %	Number of Jobs
Bloomington-Normal (B-N)	-	-0.33	-300	0.33	300
Champaign-Urbana (C-U-R)	-	-0.35	-400	-0.35	-400
Chicago	-	-0.07	-3,100	0.41	17,600
Davenport-Rock Island-Moline (D-R-M)	-	-0.16	-300	0.21	400
Decatur	-	-0.90	-500	0.36	200
Kankakee	+	0.22	100	1.13	500
Peoria	+	0	0	0.96	1,800
Rockford	-	-0.80	-1,300	-0.43	-700
Springfield	-	-0.36	-400	0	0
Metro-East*	+	0.59	1,400	-0.46	-1,100
Illinois		-0.03	-1,600	0.36	21,700

MSA League Tables*: Non-farm Employment Growth Rate

Monthly growth:

Rank	February 2008	March 2008	Rank	Change**
1	Kankakee (0.22%)	Metro-East (0.59%)	1	↑ (+7)
2	Decatur (0%)	Kankakee (0.22%)	2	↓ (-1)
3	Springfield (0%)	Peoria (0%)	3	↑ (+7)
4	Chicago (-0.04%)	Chicago (-0.07%)	4	← (0)
5	Davenport-Rock Island-Moline (-0.05%)	Davenport-Rock Island-Moline (-0.16%)	5	← (0)
6	Rockford (-0.18%)	Bloomington-Normal (-0.33%)	6	↑ (+3)
7	Champaign-Urbana-Rantoul (-0.27%)	Champaign-Urbana-Rantoul (-0.35%)	7	← (0)
8	Metro-East (-0.29%)	Springfield (-0.36%)	8	↓ (-5)
9	Bloomington-Normal (-0.43%)	Rockford (-0.8%)	9	↓ (-3)
10	Peoria (-0.47%)	Decatur (-0.9%)	10	↓ (-8)

Growth over last 12-months:

Rank	February 2008	March 2008	Rank	Change**
1	Decatur (2.58%)	Kankakee (1.13%)	1	↑ (+2)
2	Peoria (1.34%)	Peoria (0.96%)	2	← (0)
3	Kankakee (1.13%)	Chicago (0.41%)	3	↑ (+4)
4	Davenport-Rock Island-Moline (0.9%)	Decatur (0.36%)	4	↓ (-3)
5	Rockford (0.81%)	Bloomington-Normal (0.33%)	5	↑ (+3)
6	Springfield (0.81%)	Davenport-Rock Island-Moline (0.21%)	6	↓ (-2)
7	Chicago (0.72%)	Springfield (0%)	7	↓ (-1)
8	Bloomington-Normal (0.55%)	Champaign-Urbana-Rantoul (-0.35%)	8	↑ (+1)
9	Champaign-Urbana-Rantoul (0.27%)	Rockford (-0.43%)	9	↓ (-4)
10	Metro-East (-1.57%)	Metro-East (-0.46%)	10	← (0)

Talking Points

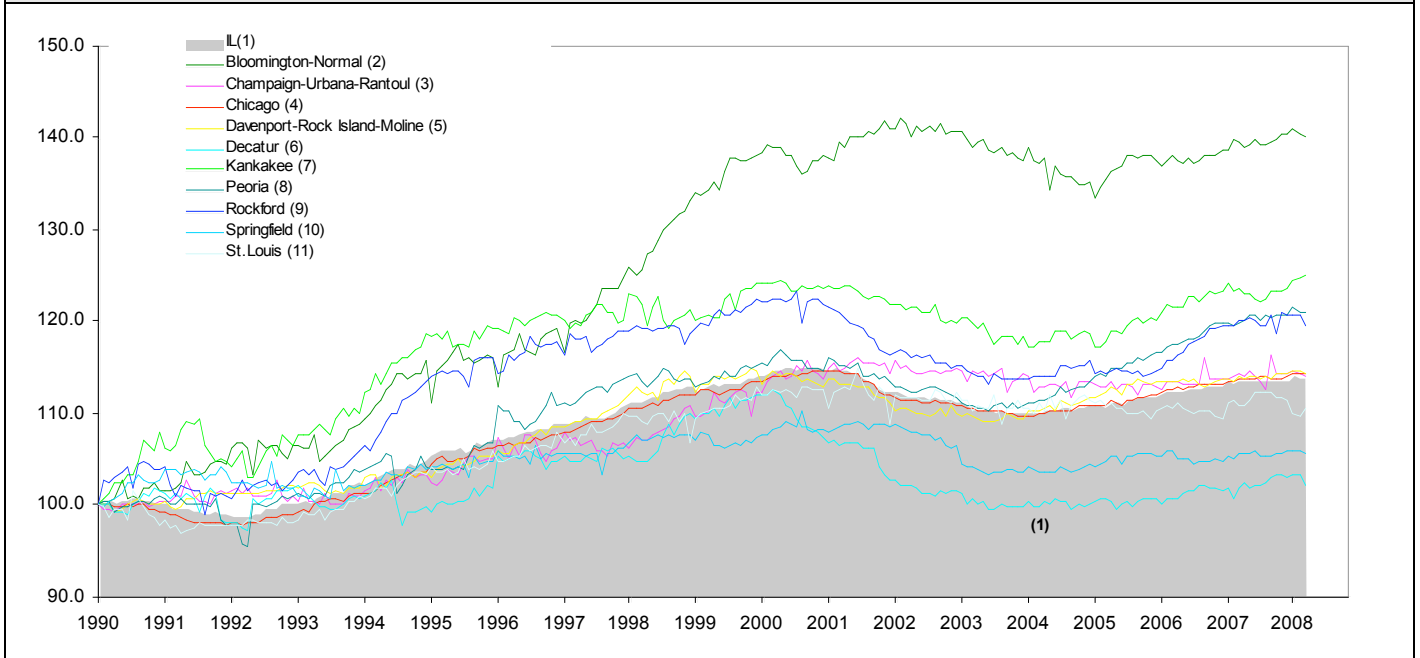
MSA League Tables

- The most remarkable upward moves in March are those of Metro-East (8th to 1st) and Peoria (10th to 3rd) both of which moved up by 7 ranks.
- Bloomington-Normal also moved up from 9th to 6th position.
- Chicago (4th), Davenport-Rock Island-Moline (5th) and Champaign-Urbana-Rantoul (7th) were unchanged from February to March.
- The deepest fall in February was experienced by Decatur (2nd to 10th) followed by Springfield (3rd to 8th).
- Rockford and Kankakee also lost ground in March.
- In the 12-months growth league table, Chicago (7th to 3rd) posted the most notable upward move in March.
- Rockford faced the deepest fall from 5th to the 9th position in February in the 12-months league table. Decatur (1st to 4th), Davenport-Rock Island-Moline (4th to 6th) and Springfield (6th to 7th) all lost ground.
- Peoria and Metro-East retained their position in 2nd and 10th from previous month.
- Kankakee (3rd to 1st), Bloomington-Normal (8th to 5th) and Champaign-Urbana-Rantoul (9th to 8th) all improved their rank in March.

*MSA League Tables are based on revised employment data. For instances of equal growth rate for multiple MSAs ranks are decided based on change of growth rate from previous month.

**Changes indicate change in rank position compared to previous month and correspond to the MSA at the right column. Rise is indicated by a '↑' and decline by a '↓' and for an unchanged position a '←' is used. Figures in parenthesis indicate relative rank change from previous month.

Total non-farm Employment growth rate Jan 1990 – Mar 2008



Shaded area on above chart represents Illinois growth.

MSA DESCRIPTION: **Bloomington-Normal (B-N)**: McLean Co. **Champaign-Urbana (C-U-R)**: Champaign Co., Ford Co. & Piatt Co. **Chicago**: Cook Co. IL, DeKalb Co. IL, DuPage Co. IL, Grundy Co. IL, Kane Co. IL, Kendall Co. IL, Lake Co. IL, McHenry Co. IL, Will Co. IL & Kenosha Co. WI **Davenport-Moline-Rock Island (D-R-M)**: Henry Co. IL, Mercer Co. IL, Rock Island Co. IL & Scott Co. IA **Decatur**: Macon Co. **Kankakee**: Kankakee Co. **Metro-East**: Bond Co., Calhoun Co., Clinton Co., Jersey Co., Macoupin Co., Madison Co., Monroe Co. & St. Clair Co. **Peoria-Pekin (Peoria)**: Marshall Co., Peoria Co., Stark Co., Tazewell Co. & Woodford Co. **Rockford**: Boone Co. & Winnebago Co. **Springfield**: Menard Co. & Sangamon Co.

The MSA data (unless noted) were seasonally adjusted to be consistent with state totals.

ABOUT: The Illinois Coalition for Jobs, Growth & Prosperity is a not-for-profit 501-c-4 organization. Coalition founding members include the Chicagoland Chamber of Commerce, the Illinois Business Roundtable, the Illinois Civil Justice League, the Illinois Manufacturers' Association, and the Illinois State Chamber of Commerce. Established to provide Illinois voters with information about government-related issues that have a direct effect on jobs, the Coalition represents firms employing more than a million Illinois workers.