

Illinois Job Index:

MSA Report

Release 1/9/2009	data Jan 1990 / Nov 2008	Issue 11.12	www.real.uiuc.edu
----------------------------	------------------------------------	-----------------------	--------------------------

As a companion to the November 2008 Illinois Job Index that reports a **negative** Rating, this MSA Report provides a localized picture on Illinois job growth and allows for comparisons between local economies, Illinois, the Nation and the Rest of the Midwest.

December 2008	Total non-farm employment	Nov 2008 Number of Jobs	Oct 2008 – Nov 2008		Last 12 months	
			Growth Rate (%)	Number of Jobs	Growth Rate (%)	Number of Jobs
	Illinois Metro	5,439,300	-0.40	-21,800	-0.63	-34,300
	Illinois non-Metro (Rural)	497,100	-0.24	-1,200	-2.55	-13,000
	Illinois Chicago (Upstate)	4,244,400	-0.50	-21,200	-0.73	-31,200
	Illinois non-Chicago	1,692,000	-0.11	-1,800	-0.94	-16,100
	Illinois	5,936,400	-0.39	-23,000	-0.79	-47,300
	Rest of Midwest (RMW)	19,606,700	-0.36	-71,700	-1.20	-237,700
	Nation	136,167,000	-0.39	-533,000	-1.35	-1,870,000

The monthly Illinois Job Index and MSA Report are provided as tools for elected officials, policy leaders and the public. We can better understand the Illinois economy and business climate by comparing and measuring Illinois employment growth rates against those of the Rest of the Midwest (RMW: Indiana, Iowa, Michigan, Missouri, Ohio and Wisconsin) and the Nation. Data and analysis is provided by the Illinois Economic Observatory / Regional Economics Applications Laboratory, University of Illinois. The MSA data (unless noted) were seasonally adjusted to be consistent with state totals.

Talking Points

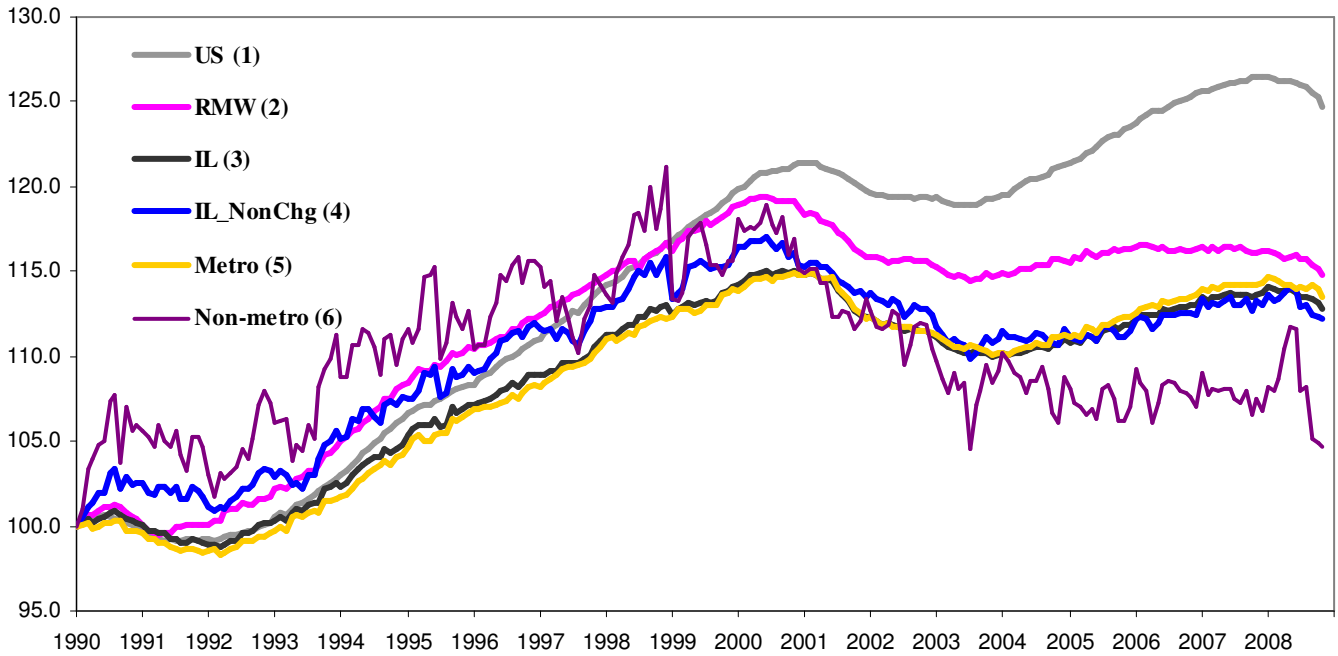
State, Downstate & Metro

- Illinois lost 23,000 jobs at a rate of -0.39% in November, compared to a revised loss of 10,700 jobs in October.
- This is the eighth time in 2008 that Illinois posted negative growth, and Illinois has lost 50,100 jobs since January, 2008.
- The major geographic divisions, Chicago-Downstate or Metro-Non-metro are all lost jobs in November. Six out of ten Metro areas lost jobs this month.
- Illinois Non-metro lost 1,200 jobs at -0.24% in November, compared to a revised 800 jobs loss in October. During the same month, Metro posted declined -0.40%, shedding 21,800 jobs, compared to a revised 9,900 job loss in October.
- Downstate lost 1,800 jobs at -0.11% in November, compared to a revised 1,400 job loss in October. Chicago, at the same time, lost 21,200 jobs at -0.50%, compared to a revised 9,300 job loss last month.
- Over the last 12-month period, Illinois registered a -0.79% decline by losing 47,300 jobs.
- In terms of the 12-month aggregated account, Metro posted a negative -0.63% growth by losing 34,300 jobs whereas Non-Metro lost 13,000 jobs at 2.55%. Chicago lost 31,200 jobs at -0.73% whereas Downstate lost 16,100 jobs at -0.94%.

MSA page (2-4)

- Illinois Metro posted a negative growth rate of -0.40% by cutting 21,800 jobs in November. Within the MSAs, three areas posted positive growth, one area had no change, and remaining six posted negative growth.
- In terms of growth performance, three MSAs posted a net improvement from October to November, and six declined.
- Three among the ten MSAs posted net gains in November. They are Kankakee with 100 jobs at 0.22% growth, Bloomington-Normal with 100 jobs at 11%, and Champaign-Urbana with 100 jobs at 0.09%.
- Over the last 12-month period, Kankakee grew the fastest at 1.59% by adding 700 jobs, followed by Peoria at 0.69% by adding 1,300 jobs. Of the six MSAs that posted negative growth rates, Chicago had the biggest loss of 21,100 jobs at -0.50%.

Total non-farm Employment growth Jan 1990 – Nov 2008



Talking Points

**State,
Downstate &
Metro**

- While Illinois' average growth was 0.09% in 2006 and 0.05% in 2007, the average for 2008 to date is -0.08%.
- Over the last 12-month period, the average growth rate for Metro was -0.05% and for Non-metro it was -0.20%.
- Different from the aggregate trend since January 1990, Illinois did better than the RMW in terms of yearly aggregated trend both in 2006 and 2007. The 2008 average through November is also in favor of Illinois.
- Downstate registered a -0.07% average growth rate in 2008 compared to an average of 0.08% gain in 2006 and 0.05% growth in 2007.

By MSA

Market Area	Nov 2008 Number of Jobs	Oct 2008 –Nov 2008			Last 12 months	
		Change compared to Illinois	Growth Rate %	Number Of Jobs	Growth Rate %	Number of Jobs
Bloomington-Normal (B-N)	91,600	+	0.11	100	0.11	100
Champaign-Urbana (C-U-R)	113,000	+	0.09	100	0.18	200
Chicago	4,244,400	-	-0.50	-21,100	-0.73	-31,200
Davenport-Rock Island-Moline (D-R-M)	189,700	+	-0.11	-200	0.21	400
Decatur	55,200	+	-0.36	-200	-0.72	-400
Kankakee	44,800	-	0.22	100	1.59	700
Peoria	189,300	+	-0.11	-200	0.69	1,300
Rockford	161,300	+	-0.12	-200	-0.86	-1,400
Springfield	112,300	+	-0.09	-100	0.09	100
Metro-East	237,800	+	0.00	0	-1.70	-4,100
Illinois			-0.39	-23,000	-0.79	-47,300

MSA League Tables*: Non-farm Employment Growth Rate

Monthly growth:

Rank	October 2008	November 2008	Rank	Change**
1	Davenport-Rock Island-Moline (0.11%)	Kankakee (0.22%)	1	↑(+8)
2	Metro-East (0.08%)	Bloomington-Normal (0.11%)	2	↑(+5)
3	Decatur (0%)	Champaign-Urbana-Rantoul (0.09%)	3	↑(+7)
4	Rockford (0%)	Metro-East (0%)	4	↓(-2)
5	Springfield (0%)	Springfield (-0.09%)	5	←(0)
6	Peoria (-0.11%)	Davenport-Rock Island-Moline (-0.11%)	6	↓(-5)
7	Bloomington-Normal (-0.11%)	Peoria (-0.11%)	7	↓(-1)
8	Chicago (-0.22%)	Rockford (-0.12%)	8	↓(-4)
9	Kankakee (-0.22%)	Decatur(-0.36%)	9	↓(-6)
10	Champaign-Urbana-Rantoul (-0.53%)	Chicago (-0.5%)	10	↓(-2)

Growth over last 12 months:

Rank	October 2008	November 2008	Rank	Change**
1	Kankakee (1.36%)	Kankakee (1.59%)	1	←(0)
2	Rockford (1.13%)	Peoria (0.69%)	2	↑(+1)
3	Peoria (0.8%)	Davenport-Rock Island-Moline (0.21%)	3	↑(+1)
4	Davenport-Rock Island-Moline (0.37%)	Champaign-Urbana-Rantoul (0.18%)	4	↑(+3)
5	Springfield (0.27%)	Bloomington-Normal (0.11%)	5	↑(+1)
6	Bloomington-Normal (0.22%)	Springfield (0.09%)	6	↓(-1)
7	Champaign-Urbana-Rantoul (0.18%)	Decatur(-0.72%)	7	↑(+2)
8	Chicago (-0.28%)	Chicago (-0.73%)	8	←(0)
9	Decatur (-0.36%)	Rockford (-0.86%)	9	↓(-7)
10	Metro-East (-1.45%)	Metro-East (-1.7%)	10	←(0)

Talking Points

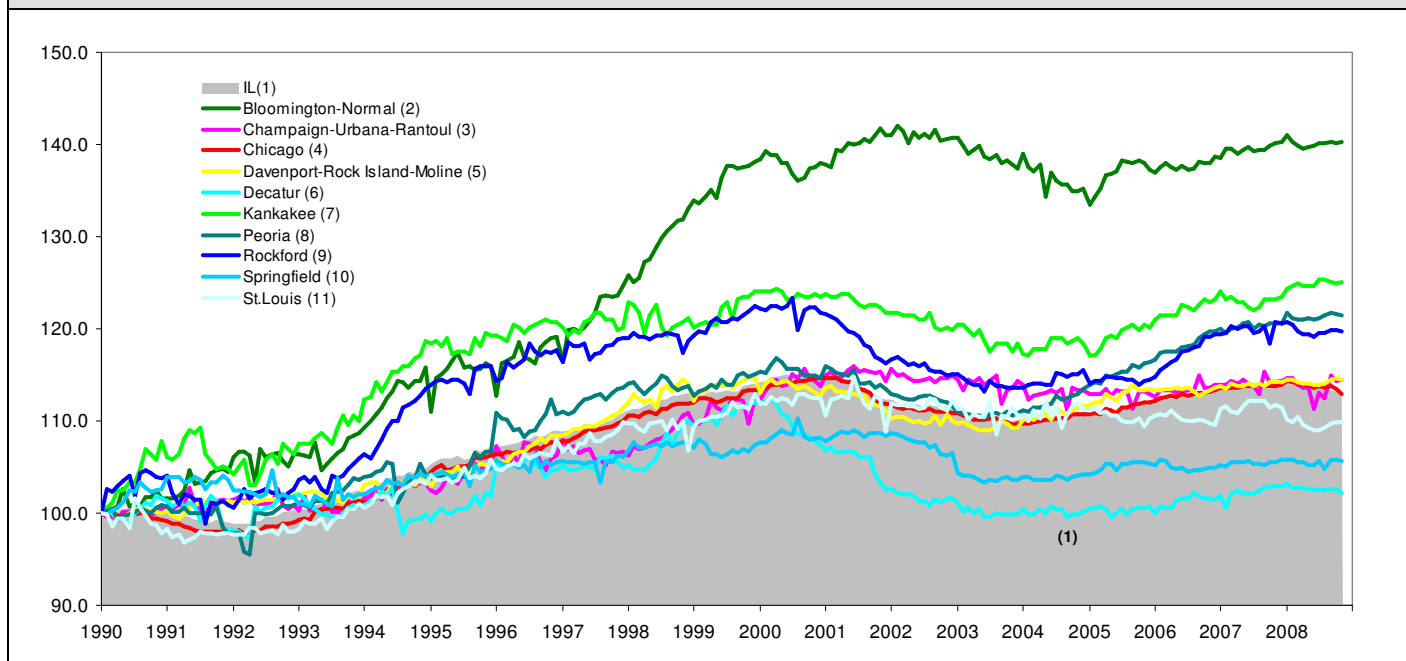
MSA League Tables

- The most remarkable upward move in November is by Kankakee (9th to 1st), which moved up by 8 spots.
- Bloomington-Normal (7th to 2nd) and Champaign-Urbana-Rantoul (10th to 3rd) both made gains in terms of the rank from October.
- Decatur (3rd to 9th) and Rockford (4th to 8th) both experienced deep falls in November.
- Chicago kept the same rank in November.
- In the 12 months growth league table, upward moves were recorded for Peoria (3rd to 2nd), Davenport-Rock Island-Moline (4th to 3rd), Champaign-Urbana-Rantoul (7th to 4th), Bloomington-Normal (6th to 5th), and Decatur (9th to 7th).
- Kankakee is still on top, while Metro-East is still in the last position.
- Rockford experienced the greatest fall (2nd to 9th) in November, followed by Springfield (5th to 6th).

*MSA League Tables are based on revised employment data. For instances of equal growth rate for multiple MSAs ranks are decided based on change of growth rate from previous month.

**Changes indicate change in rank position compared to previous month and correspond to the MSA at the right column. Rise is indicated by a '↑' and decline by a '↓' and for an unchanged position a '←' is used. Figures in parenthesis indicate relative rank change from previous month.

Total non-farm Employment growth rate Jan 1990 – Nov 2008



Shaded area on above chart represents Illinois growth.

MSA DESCRIPTION: **Bloomington-Normal (B-N):** McLean Co. **Champaign-Urbana (C-U-R):** Champaign Co., Ford Co. & Piatt Co. **Chicago:** Cook Co. IL, DeKalb Co. IL, DuPage Co. IL, Grundy Co. IL, Kane Co. IL, Kendall Co. IL, Lake Co. IL, McHenry Co. IL, Will Co. IL & Kenosha Co. WI **Davenport-Moline-Rock Island (D-R-M):** Henry Co. IL, Mercer Co. IL, Rock Island Co. IL & Scott Co. IA **Decatur:** Macon Co. **Kankakee:** Kankakee Co. **Metro-East:** Bond Co., Calhoun Co., Clinton Co., Jersey Co., Macoupin Co., Madison Co., Monroe Co. & St. Clair Co. **Peoria-Pekin (Peoria):** Marshall Co., Peoria Co., Stark Co., Tazewell Co. & Woodford Co. **Rockford:** Boone Co. & Winnebago Co. **Springfield:** Menard Co. & Sangamon Co.

The MSA data (unless noted) were seasonally adjusted to be consistent with state totals.

The Illinois Economic Observatory is part of the Institute of Government and Public Affairs at the University of Illinois.