

# Illinois Job Index: MSA Report



## Illinois Coalition for Jobs, Growth & Prosperity

Release  
**7/31/2008**

data  
**Jan 1990 / Jun 2008**

Issue  
**11.7**

[www.jobskillinois.us](http://www.jobskillinois.us)

As a companion to the July 2008 Illinois Job Index that reports a **negative** Rating, this MSA Report provides a localized picture on Illinois job growth and allows for comparisons between local economies, Illinois, Nation and Rest of the Midwest.

July 2008	Total non-farm employment	May 2008 – June 2008		Last 12 months	
		Growth Rate (%)	Number of Jobs	Growth Rate (%)	Number of Jobs
	<b>Illinois non-Metro (Rural)</b>	+0.21	+1,100	+2.92	+15,100
	<b>Illinois non-Chicago (Downstate)</b>	-0.16	-2,700	+0.32	+5,500
	<b>Illinois Metro</b>	-0.14	-7,800	-0.13	-7,100
	<b>Illinois</b>	-0.11	-6,700	+0.13	+8,000
	<b>Rest of Midwest (RMW)</b>	+0.15	+29,000	-0.40	-79,800
	<b>Nation</b>	-0.05	-62,000	+0.01	+15,000

The Illinois Coalition for Jobs, Growth & Prosperity publishes the monthly Illinois Job Index and MSA Report as tools for elected officials, policy leaders and the public. We can better understand the Illinois economy and business climate by comparing and measuring Illinois employment growth rates against those of the Rest of the Midwest (RMW: Indiana, Iowa, Michigan, Missouri, Ohio and Wisconsin) and the Nation. Data and analysis is provided by the Illinois Economic Observatory / Regional Economics Applications Laboratory, University of Illinois. The MSA data (unless noted) were seasonally adjusted to be consistent with state totals.

### Talking Points

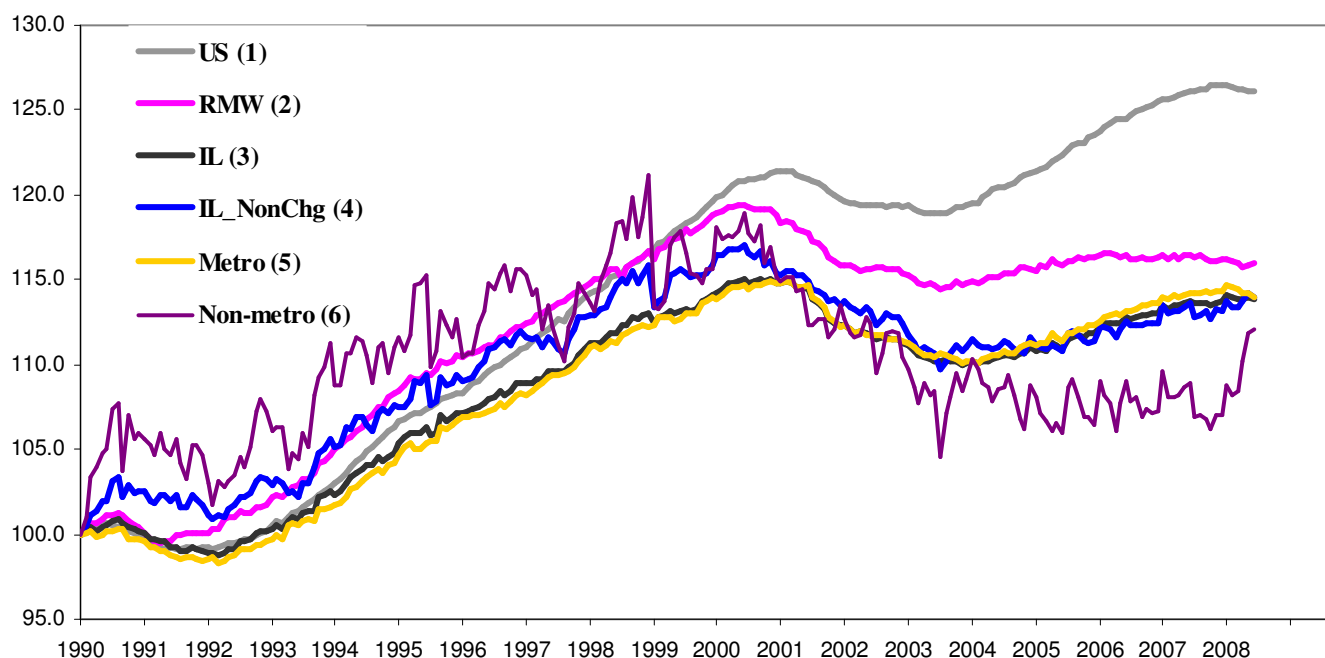
#### State, Downstate & Metro

- By losing 6,700 jobs Illinois faced a loss of performance in June from previous month when it added 4,000 jobs at 0.07%. This is the third time in 2008 that Illinois posted negative growth.
- While Illinois posted a negative overall growth in June, the major geographic divisions, Chicago-Downstate or Metro-Non-metro posted mixed ratings. Metro areas also showed variation in performance.
- After two months of positive ratings, downstate lost 2,700 jobs at -0.16% in June. Chicago, on the other hand lost 4,000 jobs at -0.09%, compared to a revised 3,000 jobs loss at -0.07% in May. Thus Chicago has lost jobs for five months in a row.
- Illinois Metro lost -7,900 jobs at -0.14% in June, compared to -3,700 jobs loss at -0.07% in May. This is the fifth consecutive month Illinois Metro lost jobs. In contrast, Non-Metro posted a 0.21% growth in June by adding 1,100 jobs at 0.21% compared to a 7,700 revised gain in May. This is the fourth consecutive month Illinois Non-Metro added jobs.
- As regards the growth over the last 12-months, Illinois posted a 0.13% growth by adding 8,000 jobs, the smallest gain recorded for any comparable period after May 2004.
- In terms of the 12-months aggregated account, Metro posted a negative 0.13% growth by losing 7,100 jobs whereas Non-Metro added 15,100 jobs at 2.92%. Chicago added 2,500 jobs at 0.06% while Downstate added 5,500 jobs at 0.32%.

#### MSA page (2-4)

- Illinois Metro posted a negative growth rate of -0.14% by losing -7,800 jobs in June. Within the MSAs, eight posted net losses and two posted positive growth.
- In terms of growth performance, two MSAs posted net improvements from May, six declined, and one remained the same. The best gains in June compared to May was for Springfield (-0.27% to 0.09%) followed by Davenport-Rock Island-Moline (-0.11% to -0.05%) and Metro-East (-0.25% to -0.21%).
- While only Bloomington-Normal and Springfield posted net gains, they added only 100 jobs each. However, Chicago lost the most jobs (4,000) at -0.09% followed by Champaign-Urbana-Rantoul which lost 2,400 jobs at -2.14%.
- Over the last 12-months, Kankakee grew the fastest at 1.60% by adding 700 jobs. Among four MSAs posting negative growth rates, Metro-East had the biggest loss of 6,800 jobs at -2.80%. Among MSAs Chicago added highest 2,500 jobs at 0.06%, which is however the smallest gain for Chicago in any 12-months term after August 2004.

### Total non-farm Employment growth Jan 1990 – Jun 2008



### Talking Points

#### State, Downstate & Metro

- While Illinois grew at 0.05% and 0.09% on average during 2007 and 2006 respectively, the average for 2008 to date is 0.02%.
- Over the last 12-month period, the average growth rate for Metro is -0.05%. In contrast, non-metro posted a 0.77% average growth rate during the same period though marked with noticeable fluctuations.
- Contrary to the aggregate trend since January 1990, Illinois did better than the RMW in terms of yearly aggregated trend both in 2006 and 2007. The 2008 average to date is also in favor of Illinois.
- Downstate registered a 0.03% average growth rate over the last 12-month compared to average 0.09% gain in 2006 and 0.05% growth in 2007.

### By MSA

Total non-farm employment Seasonally adjusted unless noted*	May 2008 –Jun 2008			Last 12 months	
	Change compared to Illinois	Growth Rate %	Number Of Jobs	Growth Rate %	Number of Jobs
Bloomington-Normal (B-N)	+	0.11	100	0.33	300
Champaign-Urbana (C-U-R)	-	-2.14	-2,400	-2.40	-2,700
Chicago	+	-0.09	-4,000	0.06	2,500
Davenport-Rock Island-Moline (D-R-M)	+	-0.05	-100	0	0
Decatur	-	-0.36	-200	0.36	200
Kankakee	-	-0.22	-100	1.60	700
Peoria	+	-0.11	-200	0.21	400
Rockford	-	-0.31	-500	-0.87	-1,400
Springfield	+	0.09	100	-0.27	-300
Metro-East*	-	-0.21	-500	-2.80	-6,800
<b>Illinois</b>		<b>-0.11</b>	<b>-6,700</b>	<b>0.13</b>	<b>8,000</b>

# MSA League Tables\*: Non-farm Employment Growth Rate

## Monthly growth:

Rank	May 2008	June 2008	Rank	Change**
1	Decatur (0.18%)	Bloomington-Normal (0.11%)	1	↑ (+1)
2	Bloomington-Normal (0.11%)	Springfield (0.09%)	2	↑ (+8)
3	Champaign-Urbana-Rantoul (0.09%)	Davenport-Rock Island-Moline (-0.05%)	3	↑ (+5)
4	Peoria (0.05%)	Chicago (-0.09%)	4	↑ (+3)
5	Kankakee (0%)	Peoria (-0.11%)	5	↓ (-1)
6	Rockford (0%)	Metro-East (-0.21%)	6	↑ (+3)
7	Chicago (-0.07%)	Kankakee (-0.22%)	7	↓ (-2)
8	Davenport-Rock Island-Moline (-0.11%)	Rockford (-0.31%)	8	↓ (-2)
9	Metro-East (-0.25%)	Decatur (-0.36%)	9	↓ (-8)
10	Springfield (-0.27%)	Champaign-Urbana-Rantoul (-2.14%)	10	↓ (-7)

## Growth over last 12-months:

Rank	May 2008	June 2008	Rank	Change**
1	Kankakee (1.36%)	Kankakee (1.6%)	1	↔ (0)
2	Decatur (0.91%)	Decatur (0.36%)	2	↔ (0)
3	Peoria (0.43%)	Bloomington-Normal (0.33%)	3	↑ (+1)
4	Bloomington-Normal (0.33%)	Peoria (0.21%)	4	↓ (-1)
5	Davenport-Rock Island-Moline (0.21%)	Chicago (0.06%)	5	↑ (+1)
6	Chicago (0.13%)	Davenport-Rock Island-Moline (0%)	6	↓ (-1)
7	Springfield (-0.36%)	Springfield (-0.27%)	7	↔ (0)
8	Rockford (-0.62%)	Rockford (-0.87%)	8	↔ (0)
9	Champaign-Urbana-Rantoul (-0.62%)	Champaign-Urbana-Rantoul (-2.4%)	9	↔ (0)
10	Metro-East (-1.99%)	Metro-East (-2.8%)	10	↔ (0)

## Talking Points

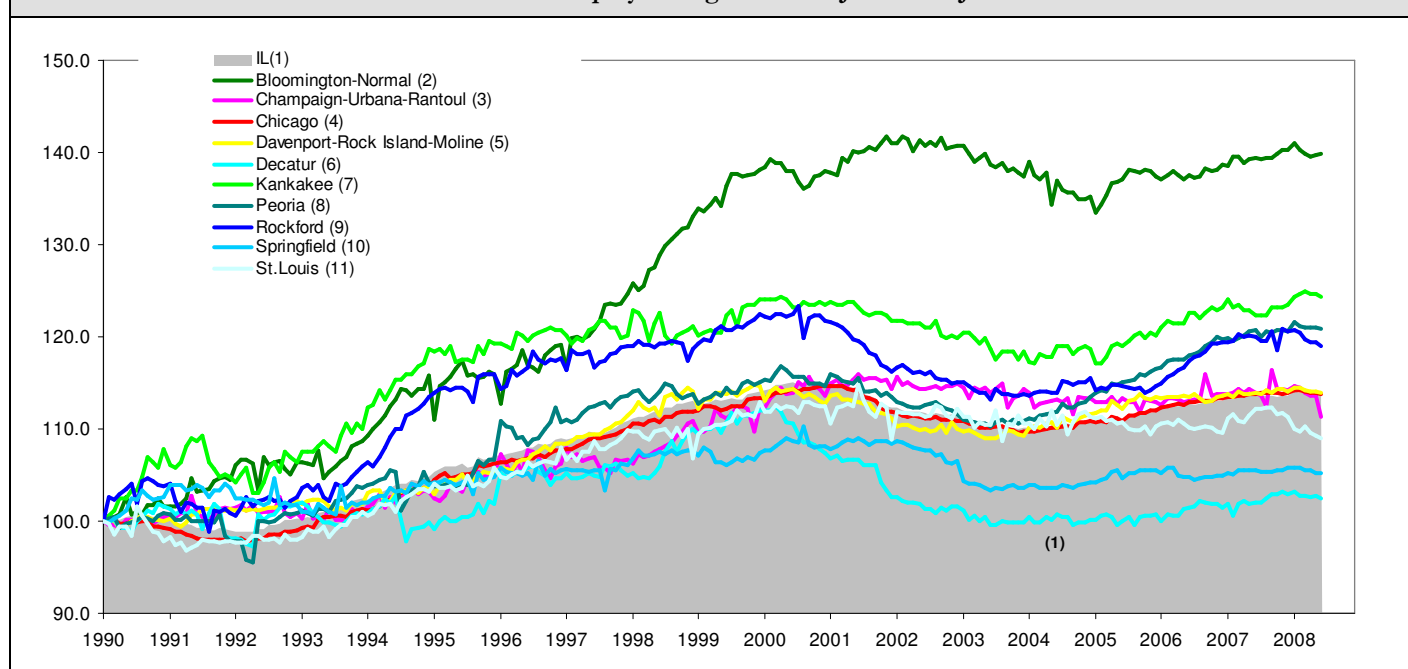
### MSA League Tables

- The most remarkable upward move in June is posted by Springfield (10<sup>th</sup> to 2<sup>nd</sup>) which moved up by 8 ranks.
- Bloomington-Normal (2<sup>nd</sup> to 1<sup>st</sup>), Davenport-Rock Island-Moline (8<sup>th</sup> to 3<sup>rd</sup>), Chicago (7<sup>th</sup> to 4<sup>th</sup>) and Metro-east (9<sup>th</sup> to 6<sup>th</sup>) all gained in terms of the rank from May.
- Decatur experienced the deepest fall (1<sup>st</sup> to 9<sup>th</sup>) in June followed by Champaign-Urbana-Rantoul (3<sup>rd</sup> to 10<sup>th</sup>).
- Peoria, Kankakee and Rockford also lost ground in May.
- In the 12-months growth league table upward moves were recorded for Bloomington-Normal (4<sup>th</sup> to 3<sup>rd</sup>) and Chicago (6<sup>th</sup> to 5<sup>th</sup>).
- The top ranking MSAs, namely Kankakee (1<sup>st</sup>) and Decatur (2<sup>nd</sup>) retained their position from May.
- Among the MSAs, Peoria (4<sup>th</sup> to 6<sup>th</sup>) and Davenport-Rock Island –Moline (5<sup>th</sup> to 6<sup>th</sup>) slipped by one rank from May.
- The rank for Springfield, Rockford, Champaign-Urbana-Rantoul and Metro-East stayed the same in June.

\*MSA League Tables are based on revised employment data. For instances of equal growth rate for multiple MSAs ranks are decided based on change of growth rate from previous month.

\*\*Changes indicate change in rank position compared to previous month and correspond to the MSA at the right column. Rise is indicated by a '↑' and decline by a '↓' and for an unchanged position a '↔' is used. Figures in parenthesis indicate relative rank change from previous month.

### Total non-farm Employment growth rate Jan 1990 – Jun 2008



Shaded area on above chart represents Illinois growth.

MSA DESCRIPTION: **Bloomington-Normal (B-N):** McLean Co. **Champaign-Urbana (C-U-R):** Champaign Co., Ford Co. & Piatt Co. **Chicago:** Cook Co. IL, DeKalb Co. IL, DuPage Co. IL, Grundy Co. IL, Kane Co. IL, Kendall Co. IL, Lake Co. IL, McHenry Co. IL, Will Co. IL & Kenosha Co. WI **Davenport-Moline-Rock Island (D-R-M):** Henry Co. IL, Mercer Co. IL, Rock Island Co. IL & Scott Co. IA **Decatur:** Macon Co. **Kankakee:** Kankakee Co. **Metro-East:** Bond Co., Calhoun Co., Clinton Co., Jersey Co., Macoupin Co., Madison Co., Monroe Co. & St. Clair Co. **Peoria-Pekin (Peoria):** Marshall Co., Peoria Co., Stark Co., Tazewell Co. & Woodford Co. **Rockford:** Boone Co. & Winnebago Co. **Springfield:** Menard Co. & Sangamon Co.

The MSA data (unless noted) were seasonally adjusted to be consistent with state totals.

**ABOUT:** The Illinois Coalition for Jobs, Growth & Prosperity is a not-for-profit 501-c-4 organization. Coalition founding members include the Chicagoland Chamber of Commerce, the Illinois Business Roundtable, the Illinois Civil Justice League, the Illinois Manufacturers' Association, and the Illinois State Chamber of Commerce. Established to provide Illinois voters with information about government-related issues that have a direct effect on jobs, the Coalition represents firms employing more than a million Illinois workers.