

# Illinois Job Index: MSA Report



## Illinois Coalition for Jobs, Growth & Prosperity

Release <b>4/5/2008</b>	data <b>Jan 1990 / Feb 2008</b>	Issue <b>11.3</b>	<b>www.jobsillinois.us</b>
----------------------------	------------------------------------	----------------------	----------------------------

As a companion to the February 2008 Illinois Job Index that reports a **Positive** Rating, this MSA Report provides a localized picture on Illinois job growth and allows for comparisons between local economies, Illinois, Nation and Rest of the Midwest.

March 2008	Total non-farm employment	Dec 2007 – Jan 2008		Last 12 months	
		Growth Rate (%)	Number of Jobs	Growth Rate (%)	Number of Jobs
	Illinois non-Metro (Rural)	-0.83	-4,300	-0.12	-600
	Illinois non-Chicago (Downstate)	-0.38	-6,600	+0.28	+4,800
	Illinois Metro	-0.07	-4,000	+0.64	+34,700
	Illinois	-0.14	-8,300	+0.57	+34,100
	Rest of Midwest (RMW)	-0.12	-24,600	-0.18	-35,400
	Nation	-0.05	-63,000	+0.63	+860,000

The Illinois Coalition for Jobs, Growth & Prosperity publishes the monthly Illinois Job Index and MSA Report as tools for elected officials, policy leaders and the public. We can better understand the Illinois economy and business climate by comparing and measuring Illinois employment growth rates against those of the Rest of the Midwest (RMW: Indiana, Iowa, Michigan, Missouri, Ohio and Wisconsin) and the Nation. Data and analysis is provided by the Illinois Economic Observatory / Regional Economics Applications Laboratory, University of Illinois. The MSA data (unless noted) were seasonally adjusted to be consistent with state totals.

### Talking Points

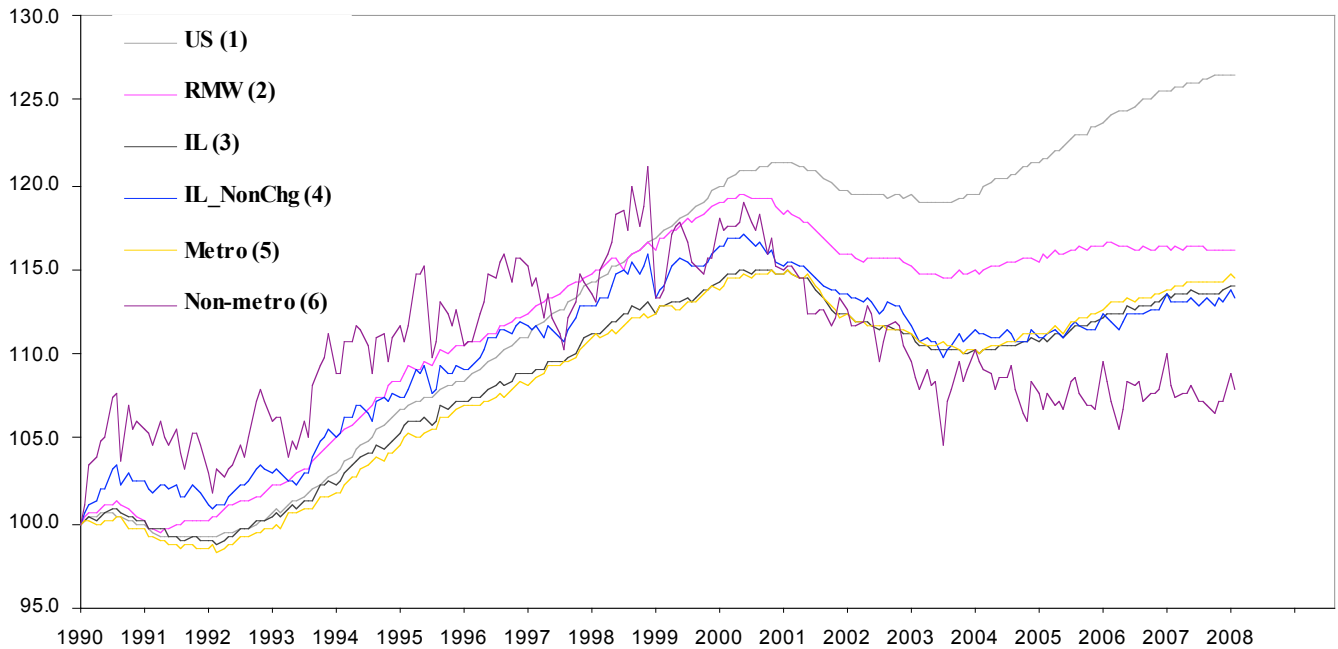
#### State, Downstate & Metro

- Illinois lost 8,300 jobs at a rate of -0.14% in February 2008, declining from a revised 0.37% gain in January. This is the largest number of jobs lost by Illinois after February 2007.
- Like the overall performance of Illinois which was negative, the major geographic divisions, Chicago-Downstate or Metro-Non-Metro all registered negative ratings in February. However, these divisions as well as the metro areas vary among themselves in performance.
- Downstate lost 6,600 jobs at -0.38% in February, down from a revised 6,600 loss at -0.38% in January. Chicago, on the other hand lost 1,700 jobs at -0.04%, as opposed to a revised 13,100 gain in January at 0.31%. This is the largest number of jobs lost by Chicago after April 2007.
- Illinois Metro posted a negative rating for the first time after October 2007 by losing 4,000 jobs at -0.07% in February compared to a revised 14,400 gain in January. Non-metro, however, lost 4,300 jobs at -0.83% compared to a 7,900 revised gain in January. Amount of job loss for non-metro is the highest after February 2007.
- Over the last 12-months, Illinois registered a 0.57% growth by adding 34,100 jobs.
- In terms of 12-months aggregated account, Metro posted a 0.64% growth by adding 34,700 jobs whereas Non-metro lost 600 jobs at -0.12% during the same period. Chicago, on the other hand added 29,300 jobs at 0.69% as opposed to 4,800 jobs added by Downstate at 0.28%.

#### MSA page (2-4)

- Illinois Metro posted a negative 0.07% growth in February by losing 4,000 jobs. Among all MSAs in Illinois, seven posted net loss, two posted net gain and Decatur posted zero growth. Springfield added the highest number of jobs (200) followed by Kankakee which added 100 jobs.
- In terms of growth rates, only Springfield and Metro-East posted improvements from January whereas while the remaining eight MSAs posted negative growth. Best gain in February compared to January was recorded for Metro-East (-1.08% to -0.34%) followed by Springfield (0.09% to 0.18%)
- Among the MSAs, Chicago lost most jobs (1,700 at -0.04%). This is the highest number of jobs lost by Chicago after April 2007.
- Over the last 12-months, Decatur grew fastest at 2.58% by adding 1,400 Jobs followed by Peoria which added 2,400 jobs at 1.29%. By losing 3,800 jobs at -1.58% over last 12-months, Metro-East remains the only MSA that registered net losses. Chicago contributed the highest number of jobs (29,300) in that period at 0.69%. Peoria and Davenport-Rock Island-Moline were the 2<sup>nd</sup> and 3<sup>rd</sup> largest contributor by adding 2,400 (at 1.29%) and 1,600 (at 0.85%) jobs respectively.

**Total non-farm Employment growth rate Jan 1990 – Feb 2008**



**Talking Points**

**State,  
Downstate &  
Metro**

- While Illinois grew at 0.05% and 0.09% on average during 2007 and 2006 respectively, the average for 2008 to date is 0.12%.
- The average growth rate for Metro over the last 12-month period was 0.05%. In contrast, non-metro recorded a net -0.01% average loss during the same period though marked with noticeable fluctuations.
- Contrary to the aggregate trend since January 1990, Illinois did better than the RMW in terms of yearly aggregated trend both in 2006 and 2007.
- Downstate, registered a 0.02% average growth rate over the last 12-month compared to average 0.09% gain in 2006 and 0.04% growth in 2007.

**By MSA**

Total non-farm employment Seasonally adjusted unless noted*	Jan 2008 –Feb 2008			Last 12 months	
	Change compared to Illinois	Growth Rate %	Number Of Jobs	Growth Rate %	Number of Jobs
<b>Bloomington-Normal (B-N)</b>	-	-0.33	-300	0.55	500
<b>Champaign-Urbana (C-U-R)</b>	-	-0.18	-200	0.36	400
<b>Chicago</b>	+	-0.04	-1,700	0.69	29,300
<b>Davenport-Rock Island-Moline (D-R-M)</b>	+	-0.11	-200	0.85	1,600
<b>Decatur</b>	+	0	0	2.58	1,400
<b>Kankakee</b>	+	0.22	100	1.13	500
<b>Peoria</b>	-	-0.47	-900	1.29	2,400
<b>Rockford</b>	+	-0.12	-200	0.87	1,400
<b>Springfield</b>	-	0.18	200	0.90	1,000
<b>Metro-East*</b>	-	-0.34	-800	-1.58	-3,800
<b>Illinois</b>		-0.14	-8,300	0.57	34,100

# MSA League Tables\*: Non-farm Employment Growth Rate

## Monthly growth:

Rank	January 2008	February 2008	Rank	Change**
1	Peoria (0.85%)	Kankakee (0.22%)	1	↑ (+1)
2	Kankakee (0.68%)	Springfield (0.18%)	2	↑ (+7)
3	Bloomington-Normal (0.55%)	Decatur (0%)	3	↑ (+4)
4	Davenport-Rock Island-Moline (0.37%)	Chicago (-0.04%)	4	↑ (+2)
5	Champaign-Urbana-Rantoul (0.35%)	Davenport-Rock Island-Moline (-0.11%)	5	↓ (-1)
6	Chicago (0.31%)	Rockford (-0.12%)	6	↑ (+2)
7	Decatur (0.18%)	Champaign-Urbana-Rantoul (-0.18%)	7	↓ (-2)
8	Rockford (0.12%)	Bloomington-Normal (-0.33%)	8	↓ (-5)
9	Springfield (0.09%)	Metro-East (-0.34%)	9	↑ (+1)
10	Metro-East (-1.08%)	Peoria (-0.47%)	10	↓ (-9)

## Growth over last 12-months:

Rank	January 2008	February 2008	Rank	Change**
1	Bloomington-Normal (1.77%)	Decatur (2.58%)	1	↑ (+2)
2	Peoria (1.5%)	Peoria (1.29%)	2	← (0)
3	Decatur (1.27%)	Kankakee (1.13%)	3	↑ (+6)
4	Rockford (1.06%)	Springfield (0.9%)	4	↑ (+4)
5	Davenport-Rock Island-Moline (0.74%)	Rockford (0.87%)	5	↓ (-1)
6	Champaign-Urbana-Rantoul (0.71%)	Davenport-Rock Island-Moline (0.85%)	6	↓ (-1)
7	Chicago (0.67%)	Chicago (0.69%)	7	← (0)
8	Springfield (0.54%)	Bloomington-Normal (0.55%)	8	↓ (-7)
9	Kankakee (0.45%)	Champaign-Urbana-Rantoul (0.36%)	9	↓ (-3)
10	Metro-East (-1.04%)	Metro-East (-1.58%)	10	← (0)

## Talking Points

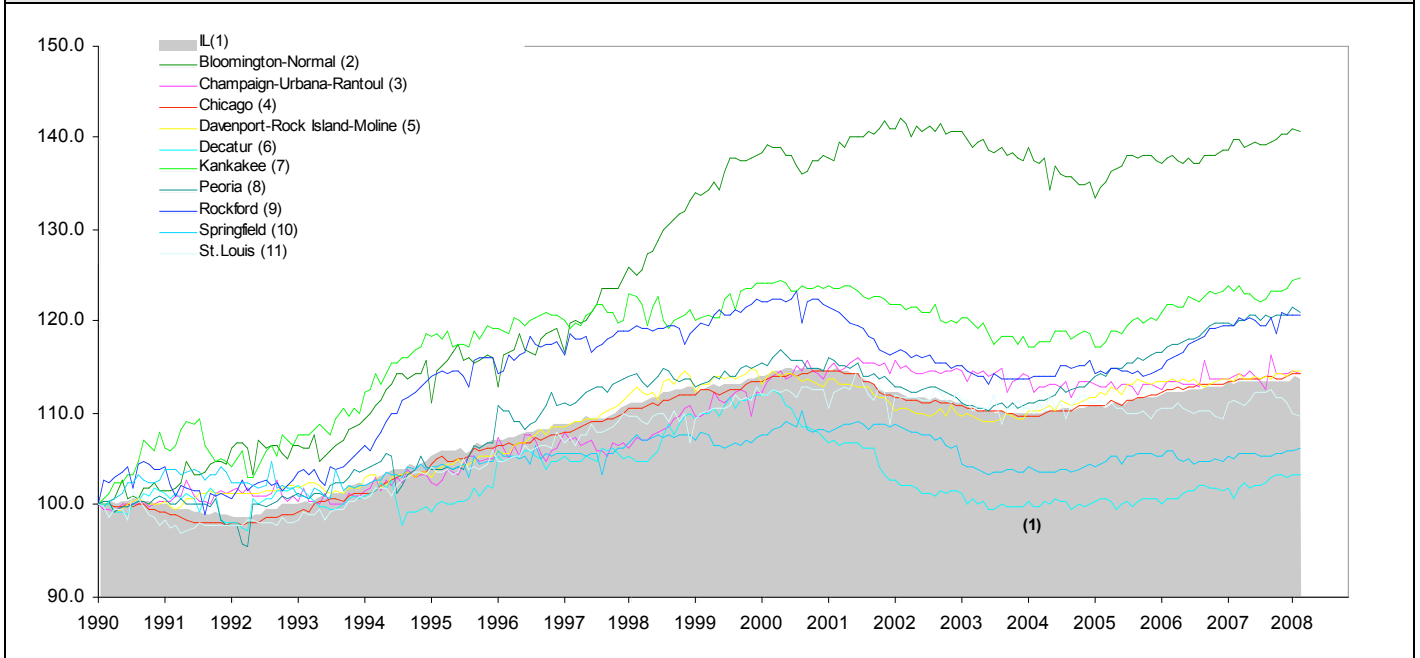
### MSA League Tables

- The most remarkable upward move in February is that of Springfield from 9<sup>th</sup> to 7<sup>th</sup>.
- Peoria rose to the first position in February up from the second position in January.
- Decatur (7<sup>th</sup> to 3<sup>rd</sup>), Chicago (6<sup>th</sup> to 4<sup>th</sup>), Rockford (8<sup>th</sup> to 6<sup>th</sup>) and Metro-east (10<sup>th</sup> to 9<sup>th</sup>) all gained in terms of the rank in previous month.
- The deepest fall in February was experienced by Peoria which slipped down to 10<sup>th</sup> position from the 1<sup>st</sup> position followed by Bloomington-Normal which fell to 8<sup>th</sup> position down from 3<sup>rd</sup>.
- Davenport-Rock Island-Moline and Champaign-Urbana-Rantoul also lost ground.
- Kankakee (9<sup>th</sup> to 3<sup>rd</sup>) posted the most notable upward move in February in the 12-months growth league table.
- In the 12-month aggregated league table, Bloomington-Normal, the best performer in January, faced the deepest fall to the 8<sup>th</sup> position in February. Champaign-Urbana-Rantoul (6<sup>th</sup> to 9<sup>th</sup>), Rockford (4<sup>th</sup> to 5<sup>th</sup>) and Davenport-Rock Island-Moline (5<sup>th</sup> to 6<sup>th</sup>) all lost ground.
- Peoria, Chicago and Metro-East retained their position in 2<sup>nd</sup>, 7<sup>th</sup> and 10<sup>th</sup> from previous month.
- Decatur (3<sup>rd</sup> to 1<sup>st</sup>) and Springfield (8<sup>th</sup> to 4<sup>th</sup>) both increased their positions in February.

\*MSA League Tables are based on revised employment data. For instances of equal growth rate for multiple MSAs ranks are decided based on change of growth rate from previous month.

\*\*Changes indicate change in rank position compared to previous month and correspond to the MSA at the right column. Rise is indicated by a '↑' and decline by a '↓' and for an unchanged position a '←' is used. Figures in parenthesis indicate relative rank change from previous month.

Total non-farm Employment growth rate Jan 1990 – Feb 2008



Shaded area on above chart represents Illinois growth.

MSA DESCRIPTION: **Bloomington-Normal (B-N):** McLean Co. **Champaign-Urbana (C-U-R):** Champaign Co., Ford Co. & Piatt Co. **Chicago:** Cook Co. IL, DeKalb Co. IL, DuPage Co. IL, Grundy Co. IL, Kane Co. IL, Kendall Co. IL, Lake Co. IL, McHenry Co. IL, Will Co. IL & Kenosha Co. WI **Davenport-Moline-Rock Island (D-R-M):** Henry Co. IL, Mercer Co. IL, Rock Island Co. IL & Scott Co. IA **Decatur:** Macon Co. **Kankakee:** Kankakee Co. **Metro-East:** Bond Co., Calhoun Co., Clinton Co., Jersey Co., Macoupin Co., Madison Co., Monroe Co. & St. Clair Co. **Peoria-Pekin (Peoria):** Marshall Co., Peoria Co., Stark Co., Tazewell Co. & Woodford Co. **Rockford:** Boone Co. & Winnebago Co. **Springfield:** Menard Co. & Sangamon Co.

The MSA data (unless noted) were seasonally adjusted to be consistent with state totals.

**ABOUT:** The Illinois Coalition for Jobs, Growth & Prosperity is a not-for-profit 501-c-4 organization. Coalition founding members include the Chicagoland Chamber of Commerce, the Illinois Business Roundtable, the Illinois Civil Justice League, the Illinois Manufacturers' Association, and the Illinois State Chamber of Commerce. Established to provide Illinois voters with information about government-related issues that have a direct effect on jobs, the Coalition represents firms employing more than a million Illinois workers.