

Illinois Job Index: MSA Report



Illinois Coalition for Jobs, Growth & Prosperity

Release
12/4/2008

data
Jan 1990 / Oct 2008

Issue
11.11

www.real.uiuc.edu

As a companion to the October 2008 Illinois Job Index that reports a **negative** Rating, this MSA Report provides a localized picture on Illinois job growth and allows for comparisons between local economies, Illinois, the Nation and the Rest of the Midwest.

November 2008	Total non-farm employment	Oct 2008 Number of Jobs	Sep 2008 – Oct 2008		Last 12 months	
			Growth Rate (%)	Number of Jobs	Growth Rate (%)	Number of Jobs
	Illinois Metro	5,462,100	-0.18	-9,700	-0.18	-9,700
	Illinois non-Metro (Rural)	496,300	-0.40	-2,000	-1.84	-9,300
	Illinois Chicago (Upstate)	4,266,600	-0.20	-8,500	-0.27	-11,400
	Illinois non-Chicago	1,691,800	-0.19	-3,200	-0.45	-7,600
	Illinois	5,958,400	-0.20	-11,700	-0.32	-19,000
	Rest of Midwest (RMW)	19,679,600	-0.15	-29,500	-0.79	-157,200
	Nation	136,899,000	-0.18	-240,000	-0.78	-1,078,000

The Illinois Coalition for Jobs, Growth & Prosperity publishes the monthly Illinois Job Index and MSA Report as tools for elected officials, policy leaders and the public. We can better understand the Illinois economy and business climate by comparing and measuring Illinois employment growth rates against those of the Rest of the Midwest (RMW: Indiana, Iowa, Michigan, Missouri, Ohio and Wisconsin) and the Nation. Data and analysis is provided by the Illinois Economic Observatory / Regional Economics Applications Laboratory, University of Illinois. The MSA data (unless noted) were seasonally adjusted to be consistent with state totals.

Talking Points

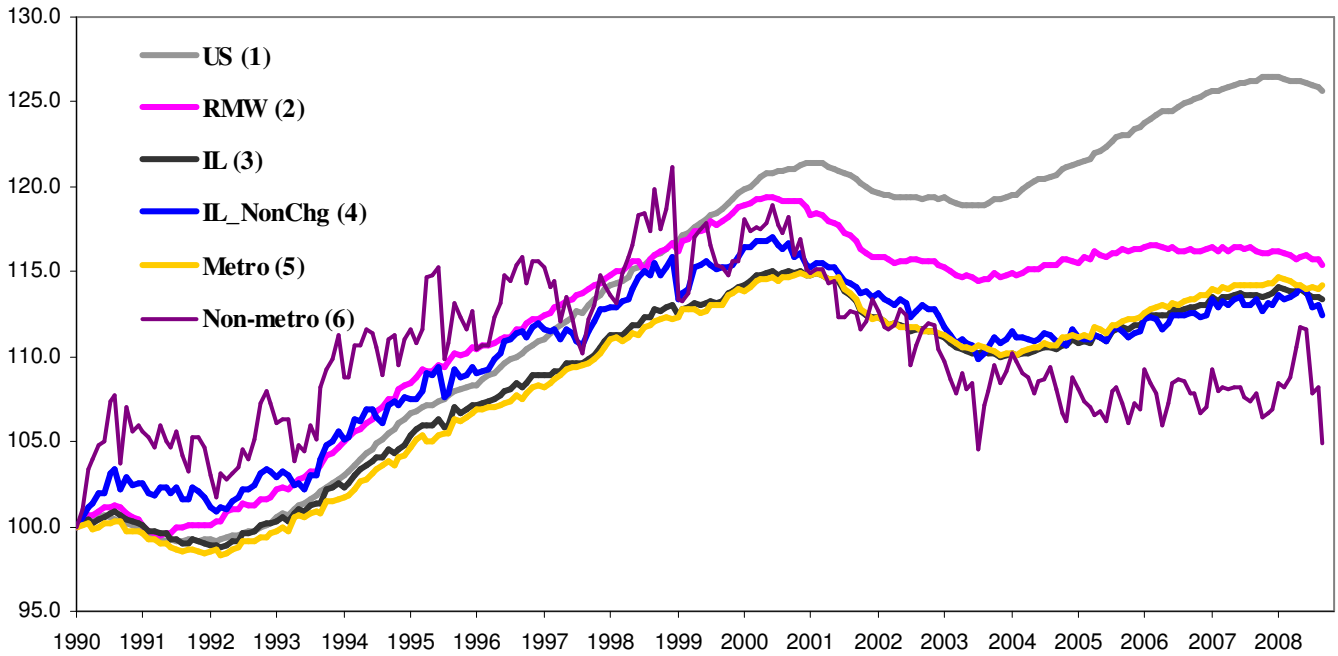
State, Downstate & Metro

- Illinois lost 11,700 jobs at a rate of -0.20% in October, compared to a revised loss of 4,300 jobs in September.
- This is the seventh time in 2008 that Illinois posted negative growth, and Illinois has lost 28,100 jobs since January, 2008.
- The major geographic divisions, Chicago-Downstate or Metro-Non-metro are all lost jobs in October. However, only five out of ten Metro areas lost jobs this month.
- Illinois Non-metro lost 2,000 jobs at -0.40% in October, compared to a revised 15,600 jobs loss in September. During the same month, Metro posted declined -0.18%, shedding 9,700 jobs, compared to a revised 11,300 job gain in September.
- Downstate lost 3,200 jobs at -0.19% in October, compared to a revised 9,100 job loss in September. Chicago, at the same time, lost 8,500 jobs at -0.20%, as opposed to a revised 4,800 gain last month.
- Over the last 12-month period, Illinois registered a -0.32% decline by losing 19,000 jobs.
- In terms of the 12-month aggregated account, Metro posted a negative -0.18% growth by losing 9,700 jobs whereas Non-Metro lost 9,300 jobs at 1.84%. Chicago lost 11,400 jobs at -0.27% whereas Downstate lost 7,600 jobs at -0.45%.

MSA page (2-4)

- Illinois Metro posted a negative growth rate of -0.18% by cutting 9,700 jobs in October. Within the MSAs, two areas posted positive growth, three areas had no change, and remaining five posted negative growth.
- In terms of growth performance, seven MSAs posted a net improvement from September to October, and two declined. However, no MSA had a higher growth rate in October compared to September.
- Two among the ten MSAs posted net gains in October. They are Metro-East with 300 jobs at 0.13% growth, and Davenport-Rock Island-Moline with 200 jobs at 0.11%.
- Over the last 12-month period, Kankakee grew the fastest at 1.36% by adding 600 jobs, followed by Peoria at 1.13% by adding 1,800 jobs. Over the four MSAs that posted negative growth rates, Chicago had the biggest loss of 11,400 jobs at -0.27%.

Total non-farm Employment growth Jan 1990 – Oct 2008



Talking Points

**State,
Downstate &
Metro**

- While Illinois' average growth was 0.09% in 2006 and 0.05% in 2007, the average for 2008 to date is -0.05%.
- Over the last 12-month period, the average growth rate for Metro was 0.18% and for Non-metro it was -1.84%.
- Different from the aggregate trend since January 1990, Illinois did better than the RMW in terms of yearly aggregated trend both in 2006 and 2007. The 2008 average through October is also in favor of Illinois.
- Downstate registered a -0.08% average growth rate in 2008 compared to an average of 0.08% gain in 2006 and 0.05% growth in 2007.

By MSA

Total non-farm employment Seasonally adjusted unless noted*	Oct 2008 Number of Jobs	Sep 2008 –Oct 2008			Last 12 months	
		Change compared to Illinois	Growth Rate %	Number Of Jobs	Growth Rate %	Number of Jobs
Bloomington-Normal (B-N)	91,500	+	-0.11	-100	0.22	200
Champaign-Urbana (C-U-R)	112,800	-	-1.23	-1,400	0.18	200
Chicago	4,266,600	+	-0.20	-8,500	-0.27	-11,400
Davenport-Rock Island-Moline (D-R-M)	189,900	+	0.11	200	0.37	700
Decatur	55,400	+	0.00	0	-0.36	-200
Kankakee	44,700	-	-0.22	-100	1.36	600
Peoria	189,500	+	-0.05	-100	0.80	1,500
Rockford	161,500	+	0.00	0	1.13	1,800
Springfield	112,400	+	0.00	0	0.27	300
Metro-East*	237,800	+	0.13	300	-1.41	-3,400
Illinois			-0.20	-11,700	-0.32	-19,000

MSA League Tables*: Non-farm Employment Growth Rate

Monthly growth:

Rank	September 2008	October 2008	Rank	Change**
1	Champaign-Urbana-Rantoul (2.98%)	Metro-East (0.13%)	1	↑(+3)
2	Springfield (0.9%)	Davenport-Rock Island-Moline (0.11%)	2	↑(+1)
3	Davenport-Rock Island-Moline (0.37%)	Decatur (0%)	3	↑(+3)
4	Metro-East (0.34%)	Rockford (0%)	4	↑(+1)
5	Rockford (0.19%)	Springfield (0%)	5	↓(-3)
6	Decatur (0.18%)	Peoria (-0.05%)	6	↑(+1)
7	Peoria (0.16%)	Bloomington-Normal (-0.11%)	7	↑(+2)
8	Chicago (0.11%)	Chicago (-0.2%)	8	↔(0)
9	Bloomington-Normal (0.11%)	Kankakee (-0.22%)	9	↑(+1)
10	Kankakee (-0.22%)	Champaign-Urbana-Rantoul (-1.23%)	10	↓(-9)

Growth over last 12 months:

Rank	September 2008	October 2008	Rank	Change**
1	Kankakee (1.59%)	Kankakee (1.36%)	1	↔(0)
2	Peoria (1.07%)	Rockford (1.13%)	2	↑(+7)
3	Bloomington-Normal (0.66%)	Peoria (0.8%)	3	↓(-1)
4	Davenport-Rock Island-Moline (0.64%)	Davenport-Rock Island-Moline (0.37%)	4	↔(0)
5	Springfield (0.45%)	Springfield (0.27%)	5	↔(0)
6	Chicago (-0.01%)	Bloomington-Normal (0.22%)	6	↓(-3)
7	Decatur (-0.18%)	Champaign-Urbana-Rantoul (0.18%)	7	↑(+1)
8	Champaign-Urbana-Rantoul (-0.26%)	Chicago (-0.27%)	8	↓(-2)
9	Rockford (-0.43%)	Decatur (-0.36%)	9	↓(-2)
10	Metro-East (-2.14%)	Metro-East (-1.41%)	10	↔(0)

Talking Points

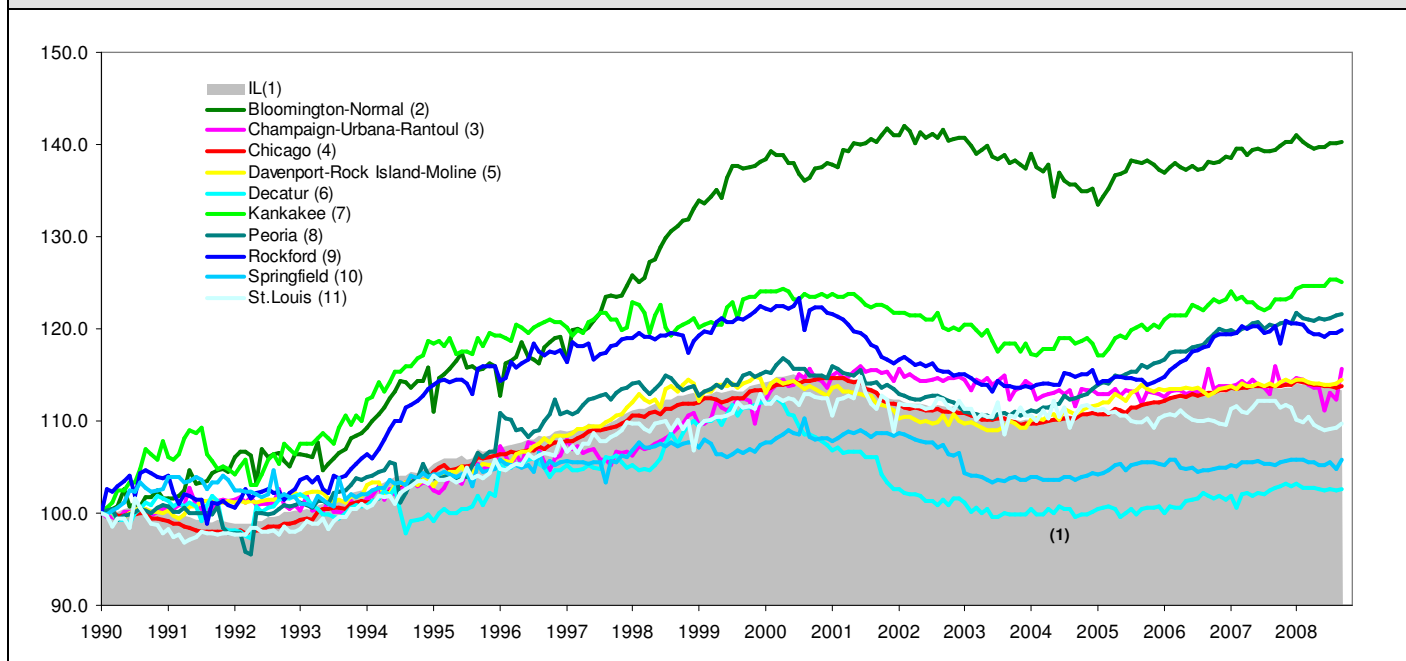
MSA League Tables

- Two most remarkable upward moves in October are by Metro-East (4th to 1st) and Decatur (6th to 2nd), which both moved up by 3 spots.
- Bloomington-Normal, Davenport-Rock Island-Moline, Rockford, Peoria, and Kankakee also made gains in terms of the rank from September.
- Champaign-Urbana-Rantoul (1st to 10th) and Springfield (2nd to 5th) both experienced deep falls in October.
- Chicago kept the same rank in October.
- In the 12 months growth league table, upward moves were recorded for Rockford (9th to 2nd), and Champaign-Urbana-Rantoul (8th to 7th).
- Kankakee is still on top while Metro-East is still in the last position.
- Bloomington-Normal experienced the greatest fall (3rd to 6th) in October, followed by Chicago (6th to 8th), and Decatur (7th to 9th).

*MSA League Tables are based on revised employment data. For instances of equal growth rate for multiple MSAs ranks are decided based on change of growth rate from previous month.

**Changes indicate change in rank position compared to previous month and correspond to the MSA at the right column. Rise is indicated by a '↑' and decline by a '↓' and for an unchanged position a '↔' is used. Figures in parenthesis indicate relative rank change from previous month.

Total non-farm Employment growth rate Jan 1990 – Oct 2008



Shaded area on above chart represents Illinois growth.

MSA DESCRIPTION: **Bloomington-Normal (B-N):** McLean Co. **Champaign-Urbana (C-U-R):** Champaign Co., Ford Co. & Piatt Co. **Chicago:** Cook Co. IL, DeKalb Co. IL, DuPage Co. IL, Grundy Co. IL, Kane Co. IL, Kendall Co. IL, Lake Co. IL, McHenry Co. IL, Will Co. IL & Kenosha Co. WI **Davenport-Moline-Rock Island (D-R-M):** Henry Co. IL, Mercer Co. IL, Rock Island Co. IL & Scott Co. IA **Decatur:** Macon Co. **Kankakee:** Kankakee Co. **Metro-East:** Bond Co., Calhoun Co., Clinton Co., Jersey Co., Macoupin Co., Madison Co., Monroe Co. & St. Clair Co. **Peoria-Pekin (Peoria):** Marshall Co., Peoria Co., Stark Co., Tazewell Co. & Woodford Co. **Rockford:** Boone Co. & Winnebago Co. **Springfield:** Menard Co. & Sangamon Co.

The MSA data (unless noted) were seasonally adjusted to be consistent with state totals.

ABOUT: The Illinois Coalition for Jobs, Growth & Prosperity is a not-for-profit 501-c-4 organization. Coalition founding members include the Chicagoland Chamber of Commerce, the Illinois Business Roundtable, the Illinois Civil Justice League, the Illinois Manufacturers' Association, and the Illinois State Chamber of Commerce. Established to provide Illinois voters with information about government-related issues that have a direct effect on jobs, the Coalition represents firms employing more than a million Illinois workers.