

Illinois Job Index:

MSA Report

Release 2/6/2009	data Jan 1990 / Dec 2008	Issue 12.01	www.real.uiuc.edu
---------------------	-----------------------------	----------------	-------------------

As a companion to the December 2008 Illinois Job Index that reports a **negative** Rating, this MSA Report provides a localized picture on Illinois job growth and allows for comparisons between local economies, Illinois, the Nation and the Rest of the Midwest.

January 2009	Total non-farm employment	Dec 2008 Number of Jobs	Nov 2008 – Dec 2008		Last 12 months	
			Growth Rate (%)	Number of Jobs	Growth Rate (%)	Number of Jobs
	Illinois Metro	5,413,000	-0.45	-24,500	-1.15	-62,800
	Illinois non-Metro (Rural)	472,800	-2.37	-11,500	-7.42	-37,900
	Illinois Chicago (Upstate)	4,223,900	-0.46	-19,400	-1.29	-55,000
	Illinois non-Chicago	1,661,900	-0.99	-16,600	-2.68	-45,700
	Illinois	5,885,800	-0.61	-36,000	-1.68	-100,700
	Rest of Midwest (RMW)	19,374,800	-0.81	-159,100	-2.37	-470,300
	Nation	135,489,000	-0.39	-524,000	-1.88	-2,589,000

The monthly Illinois Job Index and MSA Report are provided as tools for elected officials, policy leaders and the public. We can better understand the Illinois economy and business climate by comparing and measuring Illinois employment growth rates against those of the Rest of the Midwest (RMW: Indiana, Iowa, Michigan, Missouri, Ohio and Wisconsin) and the Nation. Data and analysis is provided by the Illinois Economic Observatory / Regional Economics Applications Laboratory, University of Illinois. The MSA data (unless noted) were seasonally adjusted to be consistent with state totals.

Talking Points

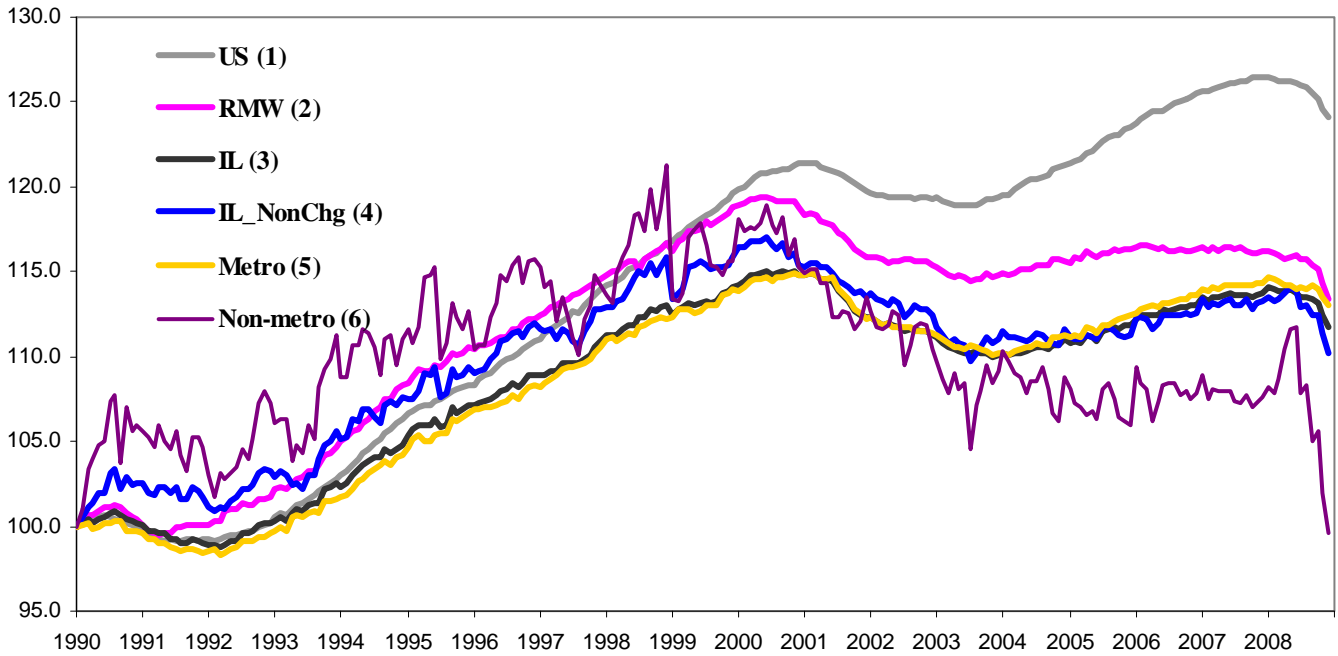
State, Downstate & Metro

- Illinois lost 36,000 jobs at a rate of -0.61% in December, compared to a revised loss of 37,600 jobs in November.
- In 2008, Illinois lost 100,700 jobs. However, 88 percent of job loss occurred after major financial crisis erupted in September.
- The major geographic divisions, Chicago-Downstate or Metro-Non-metro are all lost jobs in December. Six out of ten Metro areas lost jobs this month, while only two Metro areas added jobs.
- Illinois Non-metro lost 11,500 jobs at -2.37% in December, compared to a revised 16,900 jobs loss in November. During the same month, Metro posted declined -0.45%, shedding 24,500 jobs, compared to a revised 20,700 job loss in November.
- Downstate lost 16,600 jobs at -0.99% in December, compared to a revised 17,600 job loss in November. Chicago, at the same time, lost 19,400 jobs at -0.46%, compared to a revised 20,000 job loss last month.
- Over the last 12-month period, Illinois registered a -1.68% decline by shedding 100,700 jobs.
- In terms of the 12-month aggregated account, Metro posted a negative -1.15% growth by losing 62,800 jobs whereas Non-Metro lost 37,900 jobs at 7.42%. Chicago lost 55,000 jobs at -1.29% whereas Downstate lost 45,700 jobs at -2.68%.

MSA page (2-4)

- Illinois Metro posted a negative growth rate of -0.45% by cutting 24,800 jobs in December. Within the MSAs, two areas posted positive growth, two areas had no change, and remaining six posted negative growth.
- In terms of growth performance, three MSAs posted a net improvement from November to December, three unchanged, and four declined.
- Two among the ten MSAs posted net gains in December. They are Peoria with 200 jobs at 0.11% growth, and Kankakee with 100 jobs at 0.22%.
- Over the last 12-month period, Kankakee grew the fastest at 1.58% by adding 700 jobs, followed by Peoria at 0.85% by adding 1,600 jobs. Of the six MSAs that posted negative growth rates, Chicago had the biggest loss of 55,000 jobs at -1.29%.

Total non-farm Employment growth Jan 1990 – Dec 2008



Talking Points

State, Downstate & Metro

- While Illinois' average growth was 0.09% in 2006 and 0.05% in 2007, the average for 2008 is -0.14%, which is the worst since 1990.
- Over the last 12-month period, the average growth rate for Metro was -0.08% and for Non-metro it was -0.45%.
- Different from the aggregate trend since January 1990, Illinois did better than the RMW in terms of yearly aggregated trend both in 2006 and 2007. The 2008 average is also in favor of Illinois.
- Downstate registered a -0.24% average growth rate in 2008 compared to an average gain of 0.08% in 2006 and 0.05% growth in 2007.

By MSA

Market Area	Dec 2008 Number of Jobs	Nov 2008 –Dec 2008			Last 12 months	
		Change compared to Illinois	Growth Rate %	Number Of Jobs	Growth Rate %	Number of Jobs
Bloomington-Normal (B-N)	91,000	-	-0.66	-600	-0.66	-600
Champaign-Urbana (C-U-R)	112,900	+	0.00	0	0.18	200
Chicago	4,223,900	+	-0.46	-19,400	-1.29	-55,000
Davenport-Rock Island-Moline (D-R-M)	189,200	+	-0.21	-400	0.11	200
Decatur	55,200	+	0.00	0	-0.72	-400
Kankakee	44,900	+	0.22	100	1.58	700
Peoria	189,500	+	0.11	200	0.85	1,600
Rockford	158,600	-	-1.55	-2,500	-2.34	-3,800
Springfield	112,100	+	-0.18	-200	-0.18	-200
Metro-East	235,700	-	-0.72	-1,700	-2.28	-5,500
Illinois			-0.61	-36,000	-1.68	-100,700

MSA League Tables*: Non-farm Employment Growth Rate

Monthly growth:

Rank	November 2008	December 2008	Rank	Change**
1	Kankakee (0.22%)	Kankakee (0.22%)	1	← (0)
2	Bloomington-Normal (0.11%)	Peoria (0.11%)	2	↑ (+5)
3	Champaign-Urbana-Rantoul (0.09%)	Champaign-Urbana-Rantoul (0%)	3	← (0)
4	Springfield (0%)	Decatur (0%)	4	↑ (+5)
5	Metro-East (-0.04%)	Springfield (-0.18%)	5	↓ (-1)
6	Davenport-Rock Island-Moline (-0.11%)	Davenport-Rock Island-Moline (-0.21%)	6	← (0)
7	Peoria (-0.11%)	Chicago (-0.46%)	7	↑ (+3)
8	Rockford (-0.19%)	Bloomington-Normal (-0.66%)	8	↓ (-6)
9	Decatur (-0.36%)	Metro-East (-0.72%)	9	↓ (-4)
10	Chicago (-0.47%)	Rockford (-1.55%)	10	↓ (-2)

Growth over last 12 months:

Rank	November 2008	December 2008	Rank	Change**
1	Kankakee (1.59%)	Kankakee (1.58%)	1	← (0)
2	Peoria (0.69%)	Peoria (0.85%)	2	← (0)
3	Bloomington-Normal (0.22%)	Champaign-Urbana-Rantoul (0.18%)	3	↑ (+3)
4	Davenport-Rock Island-Moline (0.21%)	Davenport-Rock Island-Moline (0.11%)	4	← (0)
5	Springfield (0.09%)	Springfield (-0.18%)	5	← (0)
6	Champaign-Urbana-Rantoul (0.09%)	Bloomington-Normal (-0.66%)	6	↓ (-3)
7	Decatur (-0.72%)	Decatur (-0.72%)	7	← (0)
8	Chicago (-0.79%)	Chicago (-1.29%)	8	← (0)
9	Rockford (-0.92%)	Metro-East (-2.28%)	9	↑ (+1)
10	Metro-East (-1.7%)	Rockford (-2.34%)	10	↓ (-1)

Talking Points

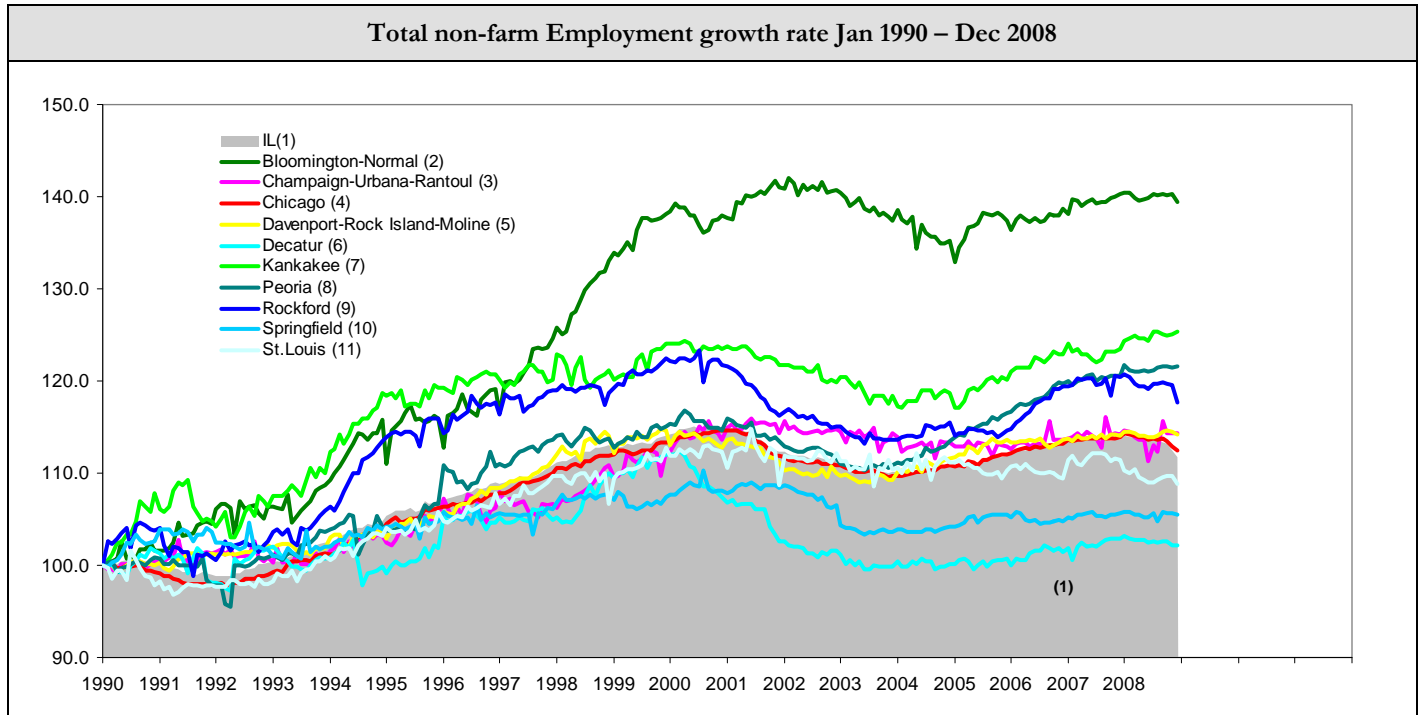
MSA League Tables

- The most remarkable upward moves in December are by Peoria (7th to 2nd), and Decatur (9th to 4th), which both moved up by 5 spots.
- Chicago (10th to 7th) also made gains in terms of the rank from November.
- Bloomington-Normal (2nd to 9th) experienced a deep fall in December
- Metro-East (5th to 9th), Rockford (8th to 10th), and Springfield (4th to 5th) as well experienced falls in December.
- Kankakee, Champaign-Urbana-Rantoul, and Davenport-Rock Island-Moline kept the same ranks this month.
- In the 12 months growth league table, upward moves were recorded for Champaign-Urbana-Rantoul (6th to 3rd), and Metro-East (10th to 9th).
- Kankakee is still on top, while Rockford became the last instead of Metro-East.
- Bloomington-Normal (3rd to 6th) and Rockford (9th to 10th) experienced falls in the last month of 2008.

*MSA League Tables are based on revised employment data. For instances of equal growth rate for multiple MSAs ranks are decided based on change of growth rate from previous month.

**Changes indicate change in rank position compared to previous month and correspond to the MSA at the right column. Rise is indicated by a '↑' and decline by a '↓' and for an unchanged position a '←' is used. Figures in parenthesis indicate relative rank change from previous month.

Total non-farm Employment growth rate Jan 1990 – Dec 2008



Shaded area on above chart represents Illinois growth.

MSA DESCRIPTION: **Bloomington-Normal (B-N):** McLean Co. **Champaign-Urbana (C-U-R):** Champaign Co., Ford Co. & Piatt Co. **Chicago:** Cook Co. IL, DeKalb Co. IL, DuPage Co. IL, Grundy Co. IL, Kane Co. IL, Kendall Co. IL, Lake Co. IL, McHenry Co. IL, Will Co. IL & Kenosha Co. WI **Davenport-Moline-Rock Island (D-R-M):** Henry Co. IL, Mercer Co. IL, Rock Island Co. IL & Scott Co. IA **Decatur:** Macon Co. **Kankakee:** Kankakee Co. **Metro-East:** Bond Co., Calhoun Co., Clinton Co., Jersey Co., Macoupin Co., Madison Co., Monroe Co. & St. Clair Co. **Peoria-Pekin (Peoria):** Marshall Co., Peoria Co., Stark Co., Tazewell Co. & Woodford Co. **Rockford:** Boone Co. & Winnebago Co. **Springfield:** Menard Co. & Sangamon Co.

The MSA data (unless noted) were seasonally adjusted to be consistent with state totals.

The Illinois Economic Observatory is part of the Institute of Government and Public Affairs at the University of Illinois.