

# Illinois Job Index:

## MSA Report

Release 4/3/2009	data Jan 1990 / Feb 2009	Issue 12.03	www.real.uiuc.edu
---------------------	-----------------------------	----------------	-------------------

NOTE: The US Bureau of Labor Statistics and the Illinois Department of Employment Security changed the way national and state employment data are coordinated to be more consistent. As a result, there have been some significant changes in estimates for Illinois over the past year.

As a companion to the January 2009 Illinois Job Index that reports a **negative** rating, this MSA Report provides a localized picture on Illinois job growth and allows for comparisons between local economies, Illinois, the Nation and the Rest of the Midwest.

March 2009	Total non-farm employment	Feb 2009 Number of Jobs	Jan 2009 – Feb 2009		Last 12 months	
			Growth Rate (%)	Number of Jobs	Growth Rate (%)	Number of Jobs
			Nation	133,768,000	-0.48	-651,000
Rest of Midwest (RMW)	19,072,800	-0.40	-77,400	-3.94	-782,500	
Illinois	5,782,700	-0.64	-37,200	-3.44	-206,300	
Illinois Metro	5,341,900	-0.41	-21,800	-2.44	-133,500	
Illinois non-Metro (Rural)	440,800	-3.38	-15,400	-14.17	-72,800	
Illinois Chicago (Upstate)	4,147,000	-0.47	-19,400	-3.11	-133,000	
Illinois non-Chicago	1,635,700	-1.08	-17,800	-4.29	-73,300	

The monthly Illinois Job Index and MSA Report are provided as tools for elected officials, policy leaders and the public. We can better understand the Illinois economy and business climate by comparing and measuring Illinois employment growth rates against those of the Rest of the Midwest (RMW: Indiana, Iowa, Michigan, Missouri, Ohio and Wisconsin) and the Nation. Data and analysis is provided by the Illinois Economic Observatory / Regional Economics Applications Laboratory, University of Illinois. The MSA data (unless noted) were seasonally adjusted to be consistent with state totals.

### Talking Points

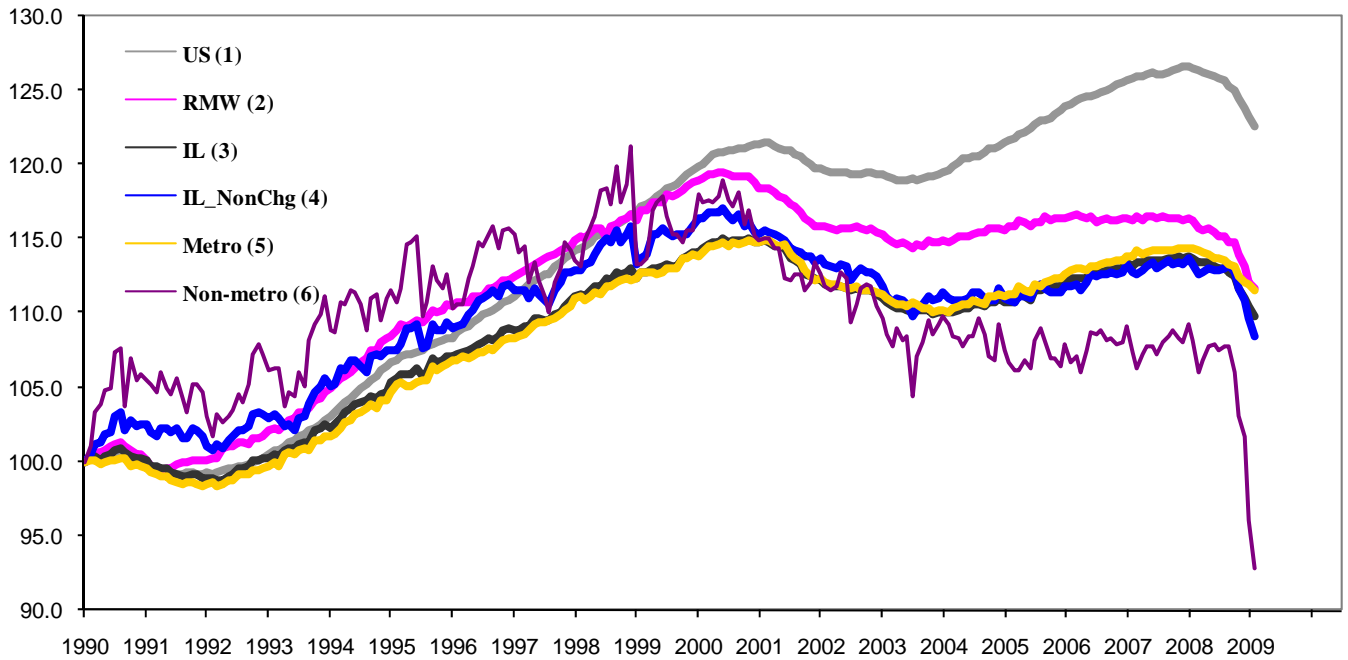
#### State, Downstate & Metro

- Illinois lost 37,200 jobs at a rate of -0.64% in February, compared to a revised loss of 29,600 jobs in January.
- Illinois has lost 171,800 jobs since financial crisis developed in September.
- The major geographic divisions, Chicago-Downstate or Metro-Non-metro all lost jobs in February. Seven out of ten Metro areas lost jobs this month, while only two Metro areas added jobs.
- Illinois Non-metro lost 15,400 jobs at -3.38% in February, compared to a revised 26,600 job loss in January. At the same time, Metro posted a loss of -0.41%, cutting 21,800 jobs, compared to a revised 3,000 job loss in January.
- Downstate lost 17,800 jobs at -1.08% in February, compared to a revised 18,600 job loss in January. Chicago, at the same time, lost 19,400 jobs at -0.47%, compared to a revised 11,000 job loss last month.
- Over the last 12-month period, Illinois registered a -3.44% decline by shedding 206,300 jobs.
- In terms of the 12-month aggregated account, Metro posted a negative -2.44% growth by losing 133,500 jobs whereas Non-Metro lost 72,800 jobs at -14.17%. Chicago lost 133,000 jobs at -3.11% whereas Downstate lost 73,300 jobs at -4.29%.

#### MSA page (2-4)

- Illinois Metro posted a negative growth rate of -0.41% by shedding 21,800 jobs in February. Within the MSAs, seven areas posted negative growth, two areas posted positive growth, and Rockford stay the same.
- In terms of growth performance, five MSAs posted a net improvement from January to February, two were unchanged, and three declined.
- The two MSAs posting net gains in February are Metro-East with 700 jobs at 0.29% and Davenport-Rock Island-Moline with 100 jobs at 0.05%.
- Over the last 12-month period, Champaign-Urbana-Rantoul grew the fastest at 3.18% by adding 3,600 jobs, followed by Metro-East at 1.01 by adding 2,400 jobs. Of the four MSAs that posted negative growth rates, Chicago had the biggest loss of 133,000 jobs at -3.11%.

### Total non-farm Employment growth Jan 1990 – Feb 2009



### Talking Points

#### State, Downstate & Metro

- While the average growth for Illinois' 1990 to 2008 was 0.04%, the average for 2008 is -0.20%, which is worse than the performance during the 2000-2001 downturn.
- Over the last 12-month period, the average growth rate for Metro was -0.21% and for Non-metro it was -1.25%.
- In contrast to the aggregate trend since January 1990, Illinois performed better than the RMW in terms of yearly aggregated trend both in 2006 and 2007. The 2008 average is also in favor of Illinois.
- Downstate registered a -0.17% average growth rate in 2008 compared to an average gain of 0.04% in 2006 and 0.10% growth in 2007.

### By MSA

Total non-farm employment Seasonally adjusted unless noted*	Feb 2009 Number of Jobs	Jan 2009 – Feb 2009			Last 12 months	
		Growth compared to Illinois	Growth Rate %	Number Of Jobs	Growth Rate %	Number of Jobs
Bloomington-Normal (B-N)	91,700	+	-0.11	-100	0.33	300
Champaign-Urbana (C-U-R)	116,900	-	-1.18	-1,400	3.18	3,600
Chicago	4,147,000	+	-0.47	-19,400	-3.11	-133,000
Davenport-Rock Island-Moline (D-R-M)	190,400	+	0.05	100	0.05	100
Decatur	54,500	-	-0.73	-400	-1.27	-700
Kankakee	43,600	+	-0.23	-100	-2.24	-1,000
Peoria	189,100	+	-0.53	-1,000	-0.32	-600
Rockford	156,600	+	0.00	0	-2.97	-4,800
Springfield	112,600	+	-0.18	-200	0.18	200
Metro-East	239,500	+	0.29	700	1.01	2,400
<b>Illinois</b>			-0.64	-37,200	-3.44	-206,300

# MSA League Tables\*: Non-farm Employment Growth Rate

Monthly growth:

Rank	January 2009	February 2009	Rank	Change**
1	Champaign-Urbana-Rantoul (3.14%)	Metro-East (0.29%)	1	↑(+1)
2	Metro-East (1.53%)	Davenport-Rock Island-Moline (0.05%)	2	↑(+4)
3	Rockford (0.58%)	Rockford (0%)	3	←(0)
4	Springfield (0.36%)	Bloomington-Normal (-0.11%)	4	↑(+1)
5	Bloomington-Normal (0.33%)	Springfield (-0.18%)	5	↓(-1)
6	Davenport-Rock Island-Moline (0.26%)	Kankakee (-0.23%)	6	↑(+4)
7	Decatur (0.18%)	Chicago (-0.47%)	7	↑(+2)
8	Peoria (-0.11%)	Peoria (-0.53%)	8	←(0)
9	Chicago (-0.26%)	Decatur (-0.73%)	9	↓(-2)
10	Kankakee (-2.67%)	Champaign-Urbana-Rantoul (-1.18%)	10	↓(-9)

Growth over last 12 months:

Rank	January 2009	February 2009	Rank	Change**
1	Champaign-Urbana-Rantoul (4.41%)	Champaign-Urbana-Rantoul (3.18%)	1	←(0)
2	Peoria (0.74%)	Metro-East (1.01%)	2	↑(+3)
3	Springfield (0.62%)	Bloomington-Normal (0.33%)	3	↑(+1)
4	Bloomington-Normal (0.55%)	Springfield (0.18%)	4	↓(-1)
5	Metro-East (0.46%)	Davenport-Rock Island-Moline (0.05%)	5	↑(+1)
6	Davenport-Rock Island-Moline (0.05%)	Peoria (-0.32%)	6	↓(-4)
7	Decatur (-0.54%)	Decatur (-1.27%)	7	←(0)
8	Kankakee (-1.8%)	Kankakee (-2.24%)	8	←(0)
9	Chicago (-2.68%)	Rockford (-2.97%)	9	↑(+1)
10	Rockford (-3.39%)	Chicago (-3.11%)	10	↓(-1)

## Talking Points

### MSA League Tables

- The most remarkable upward moves in February are by Davenport-Rock Island-Moline (6<sup>th</sup> to 2<sup>nd</sup>), and Kankakee (10<sup>th</sup> to 6<sup>th</sup>); both moved up by 4 spots.
- Chicago (9<sup>th</sup> to 7<sup>th</sup>), Metro-East (2<sup>nd</sup> to 1<sup>st</sup>), and Bloomington-Normal (5<sup>th</sup> to 4<sup>th</sup>) also made gains in terms of rank from January.
- Champaign-Urbana-Rantoul (1<sup>st</sup> to 10<sup>th</sup>) experienced a deep fall in February.
- Decatur (7<sup>th</sup> to 9<sup>th</sup>), and Springfield (4<sup>th</sup> to 5<sup>th</sup>) as well experienced falls in January.
- Rockford, and Peoria kept the same ranks this month.
- In the 12 months growth league table, upward moves were recorded for Metro-East (5<sup>th</sup> to 2<sup>nd</sup>), Bloomington-Normal (4<sup>th</sup> to 3<sup>rd</sup>), and Rockford (10<sup>th</sup> to 9<sup>th</sup>).
- Champaign-Urbana-Rantoul is on top, while Chicago replaced Rockford in last place
- Peoria (2<sup>nd</sup> to 6<sup>th</sup>) experienced a fall in February.

\*MSA League Tables are based on revised employment data. For instances of equal growth rate for multiple MSAs ranks are decided based on change of growth rate from previous month.

\*\*Changes indicate change in rank position compared to previous month and correspond to the MSA at the right column. Rise is indicated by a '↑' and decline by a '↓' and for an unchanged position a '←' is used. Figures in parenthesis indicate relative rank change from previous month.

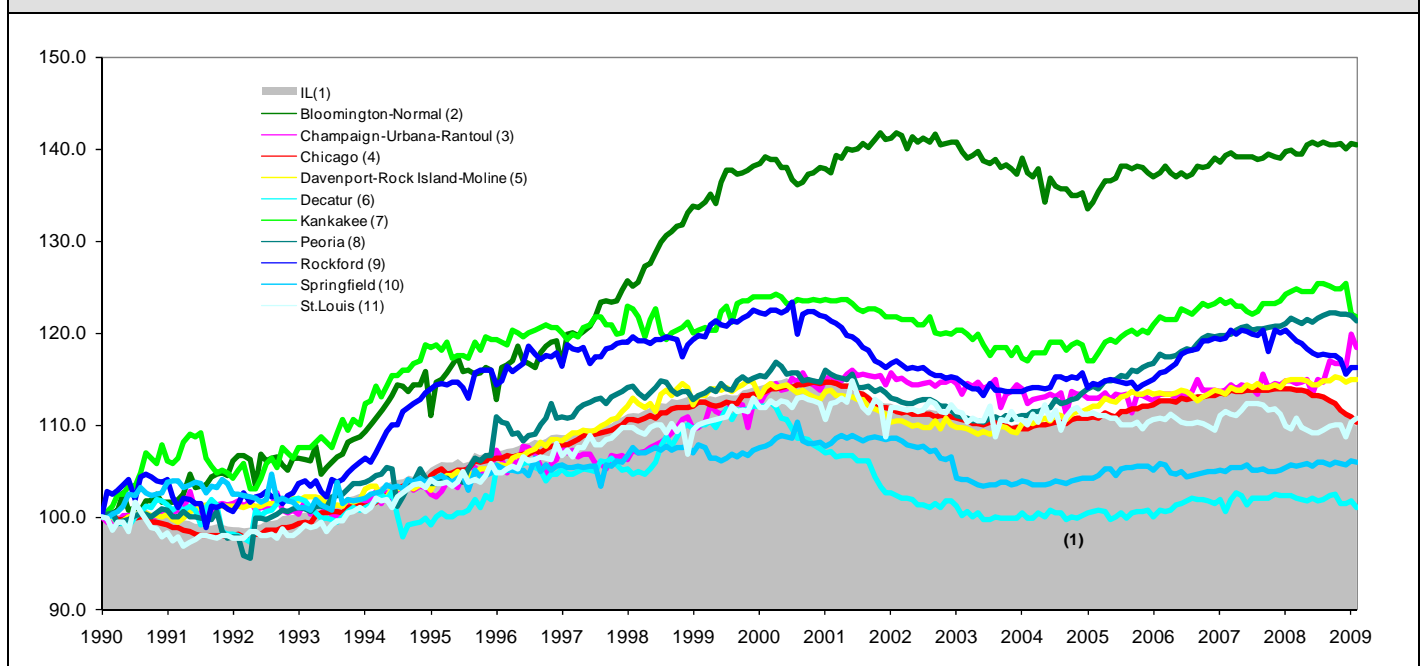
Shaded area on above chart represents Illinois growth.

February 2009 MSA Employment by sector (000s) \*

Market Area	Construction	Manufacturing	Trade, transportation & utilities	Information	Financial activities	Professional & business services	Education & health	Leisure & hospitality	Other Services	Government
Bloomington-Normal	3.14	5.65	13.95	0.98	12.15	17.62	9.67	9.90	3.38	15.28
Champaign-Urbana	4.84	9.89	18.85	2.60	4.65	8.46	13.38	10.92	3.42	39.73
Chicago	170.10	410.13	841.57	85.71	299.43	686.75	564.39	367.94	186.32	528.41
Davenport-Rock Island-Moline	9.71	26.17	39.69	3.12	8.45	25.03	25.24	18.40	7.39	27.21
Decatur	3.95	11.57	11.18	0.80	2.14	3.24	8.23	4.89	2.77	5.87
Kankakee	1.76	4.96	10.82	0.52	1.92	3.11	8.13	3.70	1.97	6.79
Peoria	9.78	30.27	34.61	2.63	8.78	22.75	32.36	18.18	7.87	21.44
Rockford	7.01	30.60	29.70	2.20	6.62	18.31	22.85	12.51	9.51	17.04
Springfield	5.33	3.48	18.05	2.54	7.55	11.07	17.33	10.68	6.57	30.12

\* The Illinois Department of Employment Security does not collect sector employment data for Metro-East

Total non-farm Employment growth rate Jan 1990 – Feb 2009



MSA DESCRIPTION: **Bloomington-Normal (B-N)**: McLean Co. **Champaign-Urbana (C-U-R)**: Champaign Co., Ford Co. & Piatt Co. **Chicago**: Cook Co. IL, DeKalb Co. IL, DuPage Co. IL, Grundy Co. IL, Kane Co. IL, Kendall Co. IL, Lake Co. IL, McHenry Co. IL, Will Co. IL & Kenosha Co. WI **Davenport-Moline-Rock Island (D-R-M)**: Henry Co. IL, Mercer Co. IL, Rock Island Co. IL & Scott Co. IA **Decatur**: Macon Co. **Kankakee**: Kankakee Co. **Metro-East**: Bond Co., Calhoun Co., Clinton Co., Jersey Co., Macoupin Co., Madison Co., Monroe Co. & St. Clair Co. **Peoria-Pekin (Peoria)**: Marshall Co., Peoria Co., Stark Co., Tazewell Co. & Woodford Co. **Rockford**: Boone Co. & Winnebago Co. **Springfield**: Menard Co. & Sangamon Co.

The MSA data (unless noted) were seasonally adjusted to be consistent with state totals.

The Illinois Economic Observatory is part of the Institute of Government and Public Affairs at the University of Illinois.