

Illinois Job Index:

MSA Report

Release 05/01/2010	data Jan 1990 / Mar 2010	Issue 13.4	www.real.illinois.edu
-----------------------	-----------------------------	---------------	-----------------------

Note: IDES revised their estimates for the number of jobs at the beginning of 2010.

As a companion to the February 2010 Illinois Job Index that reports a little change, this MSA Report provides a localized picture on Illinois job growth and allows for comparisons between local economies, Illinois, the Nation and the Rest of the Midwest.

March 2010	Total non-farm employment	March 2010 Number of Jobs	Feb 2010 – Mar 2010		Last 12 months	
			Growth Rate (%)	Number of Jobs	Growth Rate (%)	Number of Jobs
	Nation	129,750,000	0.13	162,000	-1.76	-2,320,000
	Rest of Midwest (RMW)	18,448,400	0.13	24,400	-2.25	-425,200
	Illinois	5,584,900	0.05	3,000	-2.59	-148,500
	Illinois Metro	5,086,300	0.01	600	-2.95	-154,500
	Illinois non-Metro (Rural)	498,600	0.47	2,400	1.23	6,000
	Illinois Chicago (Upstate)	3,958,400	-0.01	-400	-3.05	-124,400
	Illinois non-Chicago	1,626,500	0.21	3,400	-1.46	-24,100

The monthly Illinois Job Index and MSA Report are provided as tools for elected officials, policy leaders and the public. We can better understand the Illinois economy and business climate by comparing and measuring Illinois employment growth rates against those of the Rest of the Midwest (RMW: Indiana, Iowa, Michigan, Missouri, Ohio and Wisconsin) and the Nation. Data and analysis is provided by the Illinois Economic Observatory / Regional Economics Applications Laboratory, University of Illinois. The MSA data (unless noted) were seasonally adjusted to be consistent with state totals.

Talking Points

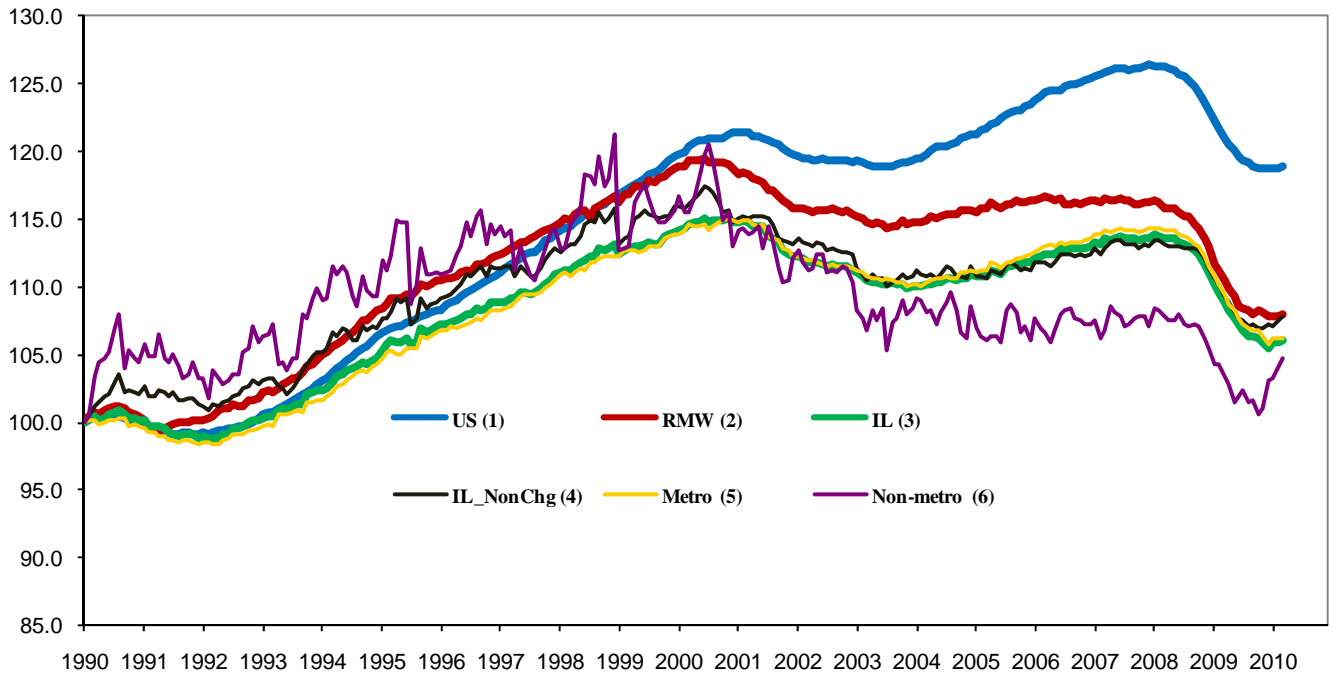
State, Downstate & Metro

- Illinois added 3,000 jobs at a rate of 0.05% in March 2010, compared to a revised 400 job gain in February. So far, the state has had three months positive job growth in a row.
- Illinois has lost 401,100 jobs since the economic crisis developed in December, 2007
- The major geographic divisions, Chicago-Downstate or Metro-Non-metro have mixed performance in February.
- Illinois Non-metro added 2,400 jobs at 0.47% this month. At the same time, Metro posted a job-gain of 600 jobs, at a rate of 0.01%, compared to a revised 3,700 job cut in the previous month.
- Chicago lost 400 jobs at -0.01% in March 2010, compared to a revised 5,900 job loss last month. On the other hand, Downstate added 3,400 jobs at 0.21%, compared to a revised 2,700 job loss in February.
- Over the last 12-months, Illinois recorded a payroll cut of 148,500 jobs at -2.59%. This is better than the highest prior 12-month loss, -5.89%, in August 2009.
- In terms of the 12-month aggregated account, Metro registered a negative -2.95% growth by shedding 154,500 jobs whereas Non-Metro added 6,000 jobs at 1.23%. Chicago lost 124,400 jobs at -3.05% whereas Downstate lost 24,100 jobs at -1.46%.

MSA page (2-4)

- Illinois Metro posted a positive growth rate of 0.01% by adding 600 jobs in the third month of 2010. Five out of the ten MSAs posted positive growth.
- In terms of growth performance, four MSAs posted a net improvement from February to March, four declined in terms of rank.
- Champaign-Urbana-Rantoul ranked as first in terms of monthly growth performance, while Kankakee ranked as the last.
- Over the last 12-month period, Kankakee grew the fastest at 0.31% by adding 100 jobs. Of the nine MSAs that posted negative growth rates, Decatur had the biggest percentage loss of -4.99% by shedding 2,700 jobs.

Total non-farm Employment growth Jan 1990 – March 2010



Talking Points

State, Downstate & Metro

- While the average growth for Illinois between 1990 and 2008 was 0.04%, the average from December 2007 to March 2010 is -0.25%, which is worse than the performance during the 2000-2001 downturn.
- Over the last 12-month period, the average growth rate for Metro was -0.25% and for Non-metro it was 0.11%.
- Illinois performed better than the RMW in terms of yearly aggregated trend in 2008, but in 2009, Illinois's performance is worse than both RMW and the nation.
- Downstate registered a -0.32% average growth rate in 2009 compared to an average gain of 0.04% in 2006, 0.10% growth in 2007, and -0.17% decline in 2008.

By MSA

Total non-farm employment Seasonally adjusted unless noted*	Mar 2010 Number of Jobs	Feb 2010 – Mar 2010			Last 12 months	
		Growth compared to Illinois	Growth Rate %	Number Of Jobs	Growth Rate %	Number of Jobs
Bloomington-Normal (B-N)	88,400	+	0.10	100	-2.15	-1,900
Champaign-Urbana (C-U-R)	109,600	+	0.66	700	-1.35	-1,500
Chicago	3,958,400	-	-0.01	-400	-3.05	-124,400
Davenport-Rock Island-Moline (D-R-M)	177,300	-	-0.19	-300	-2.66	-4,900
Decatur	51,600	-	-0.12	-100	-4.99	-2,700
Kankakee	43,100	-	-1.07	-500	0.31	100
Peoria	174,800	+	0.47	800	-4.20	-7,700
Rockford	142,500	+	0.12	200	-3.77	-5,600
Springfield	109,800	-	-0.22	-200	-1.12	-1,200
Metro-East	230,700	+	0.15	300	-2.03	-4,800
Illinois			0.05	3,000	-2.59	-148,500

MSA League Tables*: Non-farm Employment Growth Rate

Monthly growth:

Rank	Feb 2010	March 2010	Rank	Change**
1	Rockford (0.99%)	Champaign-Urbana-Rantoul (0.66%)	1	↑(+1)
2	Champaign-Urbana-Rantoul (0.9%)	Peoria (0.47%)	2	↑(+4)
3	Metro-East (0.17%)	Metro-East (0.15%)	3	↔(0)
4	Bloomington-Normal (-0.03%)	Rockford (0.12%)	4	↓(-3)
5	Davenport-Rock Island-Moline (-0.03%)	Bloomington-Normal (0.1%)	5	↓(-1)
6	Peoria (-0.08%)	Chicago (-0.01%)	6	↑(+3)
7	Springfield (-0.13%)	Decatur (-0.12%)	7	↑(+1)
8	Decatur (-0.15%)	Davenport-Rock Island-Moline (-0.19%)	8	↓(-3)
9	Chicago (-0.15%)	Springfield (-0.22%)	9	↓(-2)
10	Kankakee (-0.16%)	Kankakee (-1.07%)	10	↔(0)

Growth over last 12-months:

Rank	Feb 2010	March 2010	Rank	Change**
1	Kankakee (0.77%)	Kankakee (0.31%)	1	↔(0)
2	Springfield (-1.16%)	Springfield (-1.12%)	2	↔(0)
3	Champaign-Urbana-Rantoul (-2.13%)	Champaign-Urbana-Rantoul (-1.35%)	3	↔(0)
4	Bloomington-Normal (-2.53%)	Metro-East (-2.03%)	4	↑(+1)
5	Metro-East (-2.88%)	Bloomington-Normal (-2.15%)	5	↓(-1)
6	Davenport-Rock Island-Moline (-3.42%)	Davenport-Rock Island-Moline (-2.66%)	6	↔(0)
7	Chicago (-3.69%)	Chicago (-3.05%)	7	↔(0)
8	Rockford (-4.28%)	Rockford (-3.77%)	8	↔(0)
9	Decatur (-5%)	Peoria (-4.2%)	9	↑(+1)
10	Peoria (-5.7%)	Decatur (-4.99%)	10	↓(-1)

Talking Points

MSA League Tables

- The most remarkable upward move in March was Peoria (6th to 2nd), which moved up 4 spots.
- Chicago (9th to 6th), Decatur (8th to 7th), and Champaign-Urbana-Rantoul (2nd to 1st) all gained in terms of rank from last month.
- Rockford (1st to 4th), and Davenport-Rock Island-Moline (5th to 8th) both experienced deep fall this month.
- Springfield (7th to 9th), and Bloomington-Normal (4th to 5th) also moved down in terms of rank.
- In the 12 months growth league table, the upward moves were recorded for Metro-East (4th to 3rd), and Peoria (10th to 9th), while the downward moves were Bloomington-Normal (4th to 5th), and Decatur (9th to 10th).
- The other six MSAs maintained the same ranks.
- Kankakee is on the top, while Decatur is in the last place instead of Peoria.

*MSA League Tables are based on revised employment data. For instances of equal growth rate for multiple MSAs ranks are decided based on change of growth rate from previous month.

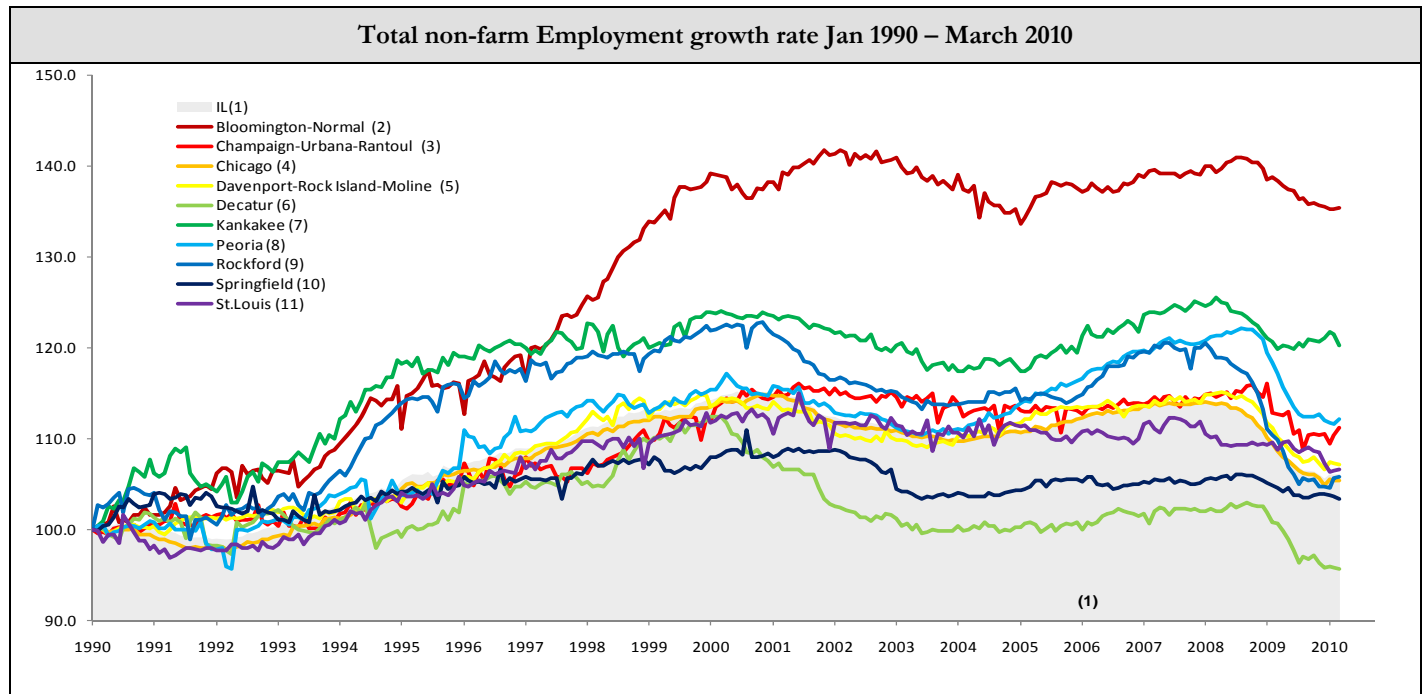
**Changes indicate change in rank position compared to previous month and correspond to the MSA at the right column. Rise is indicated by a '↑' and decline by a '↓' and for an unchanged position a '↔' is used. Figures in parenthesis indicate relative rank change from previous month.

Shaded area on above chart represents Illinois growth.

March 2010 MSA Employment by Sectors (000s) *

Market Area	Construction	Manufacturing	Trade, transportation & utilities	Information	Financial activities	Professional & business services	Education & health	Leisure & hospitality	Other Services	Government
Bloomington-Normal	2.68 (3.0%)	4.05 (4.6%)	13.46 (15.2%)	0.99 (1.1%)	12.45 (14.1%)	16.82 (19%)	9.86 (11.2%)	9.37 (10.6%)	3.39 (3.8%)	15.33 (17.3%)
Champaign-Urbana	3.46 (3.2%)	8.09 (7.4%)	17.62 (16.1%)	2.54 (2.3%)	4.54 (4.1%)	7.46 (6.8%)	13.42 (12.2%)	10.00 (9.1%)	3.31 (3.0%)	38.99 (35.6%)
Chicago	127.98 (3.2%)	370.28 (9.4%)	803.66 (20.3%)	79.2 (2.0%)	284.71 (7.2%)	631.54 (16%)	581.77 (14.7%)	361.21 (9.1%)	179.12 (4.5%)	531.66 (13.4%)
Davenport-Rock Island-Moline	7.81 (4.4%)	21.69 (12.2%)	37.92 (21.4%)	2.90 (1.6%)	8.35 (4.7%)	20.31 (11.5%)	25.9 (14.6%)	17.93 (10.1%)	7.39 (4.2%)	27.04 (15.2%)
Decatur	3.15 (6.1%)	10.19 (19.7%)	10.82 (21%)	0.80 (1.5%)	2.02 (3.9%)	3.40 (6.6%)	8.12 (15.7%)	4.63 (9.0%)	2.66 (5.2%)	5.81 (11.2%)
Kankakee	1.36 (3.1%)	4.86 (11.3%)	10.47 (24.3%)	0.61 (1.4%)	1.82 (4.2%)	2.61 (6.0%)	8.66 (20.1%)	3.94 (9.2%)	1.72 (4.0%)	6.95 (16.1%)
Peoria	8.44 (4.8%)	24.69 (14.1%)	32.46 (18.6%)	2.44 (1.4%)	7.77 (4.4%)	20.84 (11.9%)	33.18 (19%)	16.1 (9.2%)	7.48 (4.3%)	21.38 (12.2%)
Rockford	5.26 (3.7%)	26.87 (18.9%)	27.27 (19.1%)	1.89 (1.3%)	5.97 (4.2%)	14.54 (10.2%)	23.11 (16.2%)	11.86 (8.3%)	9.14 (6.4%)	16.66 (11.7%)
Springfield	4.03 (3.7%)	3.27 (3.0%)	16.88 (15.4%)	2.23 (2.0%)	7.41 (6.8%)	10.67 (9.7%)	18.08 (16.5%)	9.95 (9.1%)	6.53 (5.9%)	30.76 (28%)
IL	193.76 (3.5%)	554.25 (9.9%)	1129.75 (20.2%)	103.01 (1.8%)	366.97 (6.6%)	775.81 (13.9%)	828.77 (14.8%)	504.31 (9%)	254.69 (4.6%)	853.74 (15.3%)

* The Illinois Department of Employment Security does not collect sector employment data for Metro-East



MSA DESCRIPTION: **Bloomington-Normal (B-N)**: McLean Co. **Champaign-Urbana (C-U-R)**: Champaign Co., Ford Co. & Piatt Co. **Chicago**: Cook Co. IL, DeKalb Co. IL, DuPage Co. IL, Grundy Co. IL, Kane Co. IL, Kendall Co. IL, Lake Co. IL, McHenry Co. IL, Will Co. IL & Kenosha Co. WI **Davenport-Moline-Rock Island (D-R-M)**: Henry Co. IL, Mercer Co. IL, Rock Island Co. IL & Scott Co. IA **Decatur**: Macon Co. **Kankakee**: Kankakee Co. **Metro-East**: Bond Co., Calhoun Co., Clinton Co., Jersey Co., Macoupin Co., Madison Co., Monroe Co. & St. Clair Co. **Peoria-Pekin (Peoria)**: Marshall Co., Peoria Co., Stark Co., Tazewell Co. & Woodford Co. **Rockford**: Boone Co. & Winnebago Co. **Springfield**: Menard Co. & Sangamon Co. The MSA data (unless noted) were seasonally adjusted to be consistent with state totals.

The Illinois Economic Observatory is part of the Institute of Government and Public Affairs at the University of Illinois.