

# Illinois Job Index:

## MSA Report

Release <b>09/06/2010</b>	data <b>Jan 1990 / July 2010</b>	Issue <b>13.8</b>	<b>www.real.illinois.edu</b>
------------------------------	-------------------------------------	----------------------	------------------------------

Note: IDES revised their estimates for the number of jobs at the beginning of 2010.

As a companion to the July 2010 Illinois Job Index that reports an unchanged rating, this MSA Report provides a localized picture on Illinois job growth and allows for comparisons between local economies, Illinois, the Nation and the Rest of the Midwest.

Aug 2010	Total non-farm employment	July 2010 Number of Jobs	June 2010 – July 2010		Last 12 months	
			Growth Rate (%)	Number of Jobs	Growth Rate (%)	Number of Jobs
	Nation	130,242,000	-0.10	-131,000	-0.04	-52,000
	Rest of Midwest (RMW)	18,607,800	0.28	52,100	0.38	69,800
	Illinois	5,601,700	-0.36	-20,200	-0.40	-22,300
	Illinois Metro	5,062,700	-0.31	-15,600	-1.44	-74,200
	Illinois non-Metro (Rural)	539,000	-0.85	-4,600	10.65	51,900
	Illinois Chicago (Upstate)	3,931,300	-0.38	-15,000	-1.77	-70,800
	Illinois non-Chicago	1,670,400	-0.31	-5,200	2.99	48,500

The monthly Illinois Job Index and MSA Report are provided as tools for elected officials, policy leaders and the public. We can better understand the Illinois economy and business climate by comparing and measuring Illinois employment growth rates against those of the Rest of the Midwest (RMW: Indiana, Iowa, Michigan, Missouri, Ohio and Wisconsin) and the Nation. Data and analysis is provided by the Illinois Economic Observatory / Regional Economics Applications Laboratory, University of Illinois. The MSA data (unless noted) were seasonally adjusted to be consistent with state totals.

### Talking Points

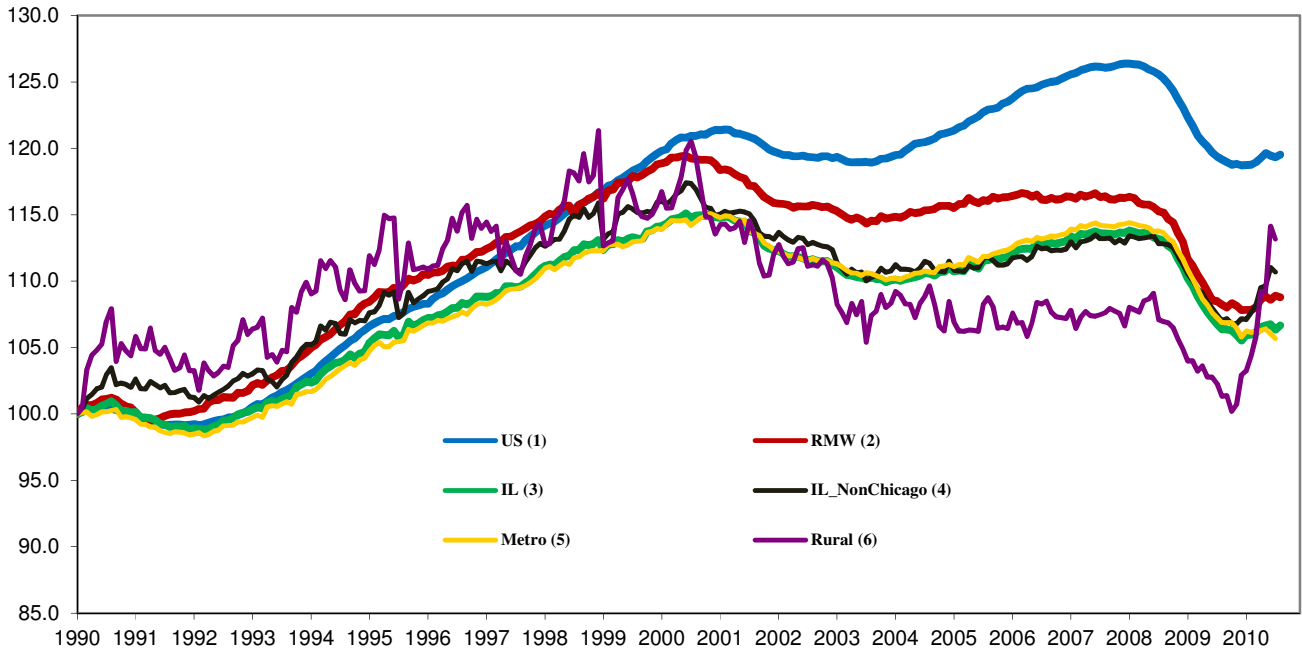
#### State, Downstate & Metro

- Illinois shed 20,200 jobs in July 2010 at a rate of -0.36%, compared with a revised 3,900 job gain in June, the first time Illinois had a major job loss this year, generated in part by a construction strike, the end of a tax credit program for homebuyers and the end of temporary Census jobs.
- Illinois has lost 384,300 jobs since the economic crisis developed in December, 2007
- The major geographic divisions, Chicago-Downstate and Metro-Rural had negative performances in July.
- Illinois Rural area shed 4,600 jobs at -0.85% this month, compared to a revised 23,700 job gain in June. At the same time, Metro posted a job-loss of -15,600 jobs, at a rate of -0.31%, compared to a revised 19,800 job loss in the previous month.
- Chicago shed 15,000 jobs at -0.38% in July 2010, compared to a revised 17,400 job loss last month. On the other hand, Downstate shed 5,200 jobs at -0.31%, compared to a revised 21,300 job gain in June.
- Over the last 12-months, Illinois recorded a payroll cut of 22,300 jobs at -0.40%. This is better than the worst month -5.89% in August 2009. In fact, starting from October 2009, the pace of 12-month job cuts has been declining in a row.
- In terms of the 12-month aggregated account, Metro registered a negative -1.44% growth by shedding 74,200 jobs whereas Rural added 51,900 jobs at 10.65%. Chicago lost 70,800 jobs at -1.77% whereas Downstate added 48,500 jobs at 2.99%.

#### MSA page (2-4)

- Illinois Metro posted a negative growth rate of -0.31% by shedding 15,600 jobs in the seventh month of 2010. Six out of the ten MSAs posted positive growth. However, the numbers of jobs added in these six MSAs are trivial compared to the total job loss of the other four MSAs.
- In terms of growth performance, only three MSAs posted a net improvement from June to July, seven declined in terms of rank.
- Decatur ranked first in terms of monthly growth performance, while Champaign-Urbana-Rantoul dropped from the second place to the last from June to July.
- Over the last 12-month period, Rockford grew the fastest at 2.27% by adding 3,200 jobs. Of the eight MSAs that posted negative growth rates, Metro-East had the greatest percentage loss of -1.84% by shedding 4,300 jobs.

### Total non-farm Employment growth Jan 1990 – July 2010



### Talking Points

#### State, Downstate & Metro

- While the average growth for Illinois between 1990 and 2008 was 0.04%, the average from December 2007 to July 2010 is -0.21%, which is worse than the performance during the 2000-2001 downturns.
- Since the economic crisis in December, 2007, the average growth for Metro is -0.24 while for Rural is 0.17%. The same rate for Downstate is -0.07% while for Upstate is -0.26%.
- Over the last 12-month period, the average growth rate for Metro was -0.12% and for Rural it was 0.86%.
- Illinois performed worse than the RMW and the nation in terms of yearly aggregated trend in 2009, but so far in 2010, Illinois's performance is better than the nation.
- Downstate registered a 0.46% average growth rate in the first seven month of 2010 compared to an average gain of 0.10% growth in 2007, -0.17% decline in 2008, and -0.32% decline in 2009.

### By MSA

Market Area	July 2010 Number of Jobs	June 2010 – July 2010			Last 12 months	
		Growth compared to Illinois	Growth Rate %	Number Of Jobs	Growth Rate %	Number of Jobs
Bloomington-Normal (B-N)	88,700	+	0.20	200	-0.41	-400
Champaign-Urbana (C-U-R)	108,400	-	-0.37	-400	-1.01	-1,100
Chicago	3,931,300	-	-0.38	-15,000	-1.77	-70,800
Davenport-Rock Island-Moline (D-R-M)	178,500	+	0.06	100	-0.12	-210
Decatur	51,900	+	0.12	100	-0.19	-100
Kankakee	42,900	-	-0.71	-300	-0.66	-300
Peoria	176,600	+	0.14	200	0.51	900
Rockford	144,700	+	0.15	200	2.27	3,200
Springfield	109,200	+	0.07	100	-1.00	-1,100
Metro-East	230,600	+	-0.34	-800	-1.84	-4,300
Illinois			-0.36	-20,200	-0.40	-22,300

# MSA League Tables\*: Non-farm Employment Growth Rate

## Monthly growth:

Rank	June 2010	July 2010	Rank	Change**
1	Rockford (0.76%)	Decatur(0.66%)	1	↑(+7)
2	Champaign-Urbana-Rantoul (0.53%)	Rockford (0.1%)	2	↓(-1)
3	Davenport-Rock Island-Moline (0.33%)	Springfield (0.07%)	3	↑(+6)
4	Peoria (0.23%)	Davenport-Rock Island-Moline (0.06%)	4	↓(-1)
5	Kankakee (0.23%)	Peoria (-0.05%)	5	↓(-1)
6	Chicago (0.12%)	Kankakee (-0.21%)	6	↓(-1)
7	Metro-East (0.09%)	Bloomington-Normal (-0.25%)	7	↑(+3)
8	Decatur (-0.03%)	Chicago (-0.44%)	8	↓(-2)
9	Springfield (-0.29%)	Metro-East (-0.51%)	9	↓(-2)
10	Bloomington-Normal (-0.64%)	Champaign-Urbana-Rantoul (-1.3%)	10	↓(-8)

## Growth over last 12-months:

Rank	June 2010	July 2010	Rank	Change**
1	Rockford (1.08%)	Rockford (2.27%)	1	↔(+0)
2	Kankakee (0.58%)	Peoria (0.51%)	2	↑(+1)
3	Peoria (-0.38%)	Davenport-Rock Island-Moline (-0.12%)	3	↑(+1)
4	Davenport-Rock Island-Moline (-0.48%)	Decatur (-0.19%)	4	↑(+4)
5	Champaign-Urbana-Rantoul (-0.59%)	Bloomington-Normal (-0.41%)	5	↑(+2)
6	Springfield (-1.18%)	Kankakee (-0.66%)	6	↓(-4)
7	Bloomington-Normal (-1.19%)	Springfield (-1%)	7	↓(-1)
8	Decatur (-1.46%)	Champaign-Urbana-Rantoul (-1.01%)	8	↓(-3)
9	Chicago (-1.76%)	Chicago (-1.77%)	9	↔(+0)
10	Metro-East (-1.87%)	Metro-East (-1.84%)	10	↔(+0)

## Talking Points

### MSA League Tables

- Champaign-Urbana-Rantoul (2<sup>nd</sup> to 10<sup>th</sup>) experienced the deepest fall this month.
- Metro-East (7<sup>th</sup> to 9<sup>th</sup>), Chicago (6<sup>th</sup> to 8<sup>th</sup>), Rockford (1<sup>st</sup> to 2<sup>nd</sup>), Davenport-Rock Island-Moline (3<sup>rd</sup> to 4<sup>th</sup>), Peoria (4<sup>th</sup> to 5<sup>th</sup>), and Kankakee (5<sup>th</sup> to 6<sup>th</sup>) all dropped in terms of rank from last month.
- The most remarkable upward move in July was Decatur (8<sup>th</sup> to 1<sup>st</sup>).
- Springfield (9<sup>th</sup> to 3<sup>rd</sup>), Bloomington-Normal (10<sup>th</sup> to 7<sup>th</sup>) also gained in terms of rank.
- In the 12 months growth league table, upward moves were recorded for Peoria (6<sup>th</sup> to 3<sup>rd</sup>), Decatur (8<sup>th</sup> to 4<sup>th</sup>), Davenport-Rock Island-Moline (4<sup>th</sup> to 3<sup>rd</sup>), and Bloomington-Normal (7<sup>th</sup> to 5<sup>th</sup>) while downward moves were recorded for Kankakee (2<sup>nd</sup> to 6<sup>th</sup>), Springfield (6<sup>th</sup> to 7<sup>th</sup>), and Champaign-Urbana-Rantoul (5<sup>th</sup> to 8<sup>th</sup>).
- Compared with last month, Rockford and Metro-East kept their first and last place respectively in terms of rank.

\*MSA League Tables are based on revised employment data. For instances of equal growth rate for multiple MSAs ranks are decided based on change of growth rate from previous month.

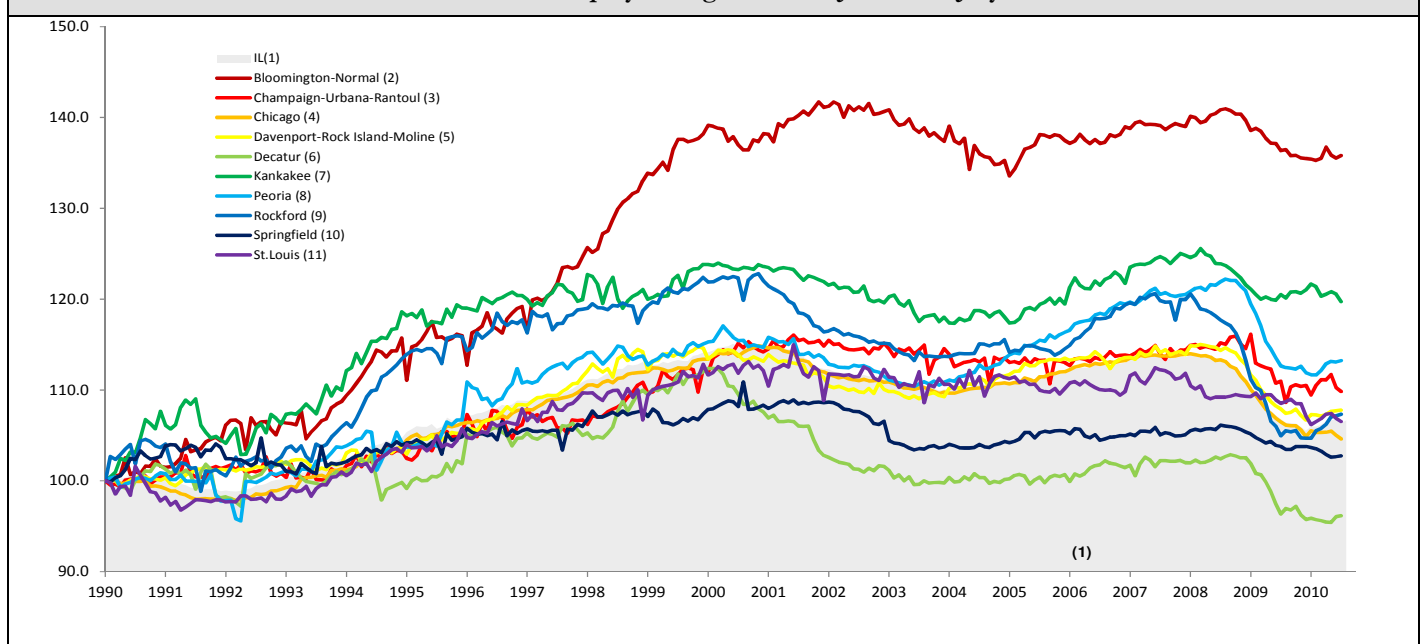
\*\*Changes indicate change in rank position compared to previous month and correspond to the MSA at the right column. Rise is indicated by a '↑' and decline by a '↓' and for an unchanged position a '↔' is used. Figures in parenthesis indicate relative rank change from previous month. Shaded area on above chart represents Illinois growth.

### July 2010 MSA Employment by Sectors (000s) \*

Market Area	Construction	Manufacturing	Trade, transportation & utilities	Information	Financial activities	Professional & business services	Education & health	Leisure & hospitality	Other Services	Government
Bloomington-Normal	2.62 (3.0%)	4.11 (4.6%)	13.45 (15.2%)	1.00 (1.1%)	12.38 (14%)	16.67 (18.8%)	9.96 (11.2%)	9.71 (10.9%)	3.38 (3.8%)	15.44 (17.4%)
Champaign-Urbana	3.42 (3.2%)	8.05 (7.4%)	17.78 (16.4%)	2.36 (2.2%)	4.46 (4.1%)	7.60 (7.0%)	13.44 (12.4%)	10.26 (9.5%)	3.25 (3.0%)	37.89 (35%)
Chicago	115.79 (2.9%)	374 (9.5%)	801.02 (20.4%)	78.23 (2%)	282.85 (7.2%)	629.77 (16%)	586.54 (14.9%)	357.73 (9.1%)	175.99 (4.5%)	530.09 (13.5%)
Davenport-Rock Island-Moline	8.05 (4.5%)	21.84 (12.2%)	38.24 (21.4%)	2.90 (1.6%)	8.21 (4.6%)	20.92 (11.7%)	26 (14.6%)	17.51 (9.8%)	7.39 (4.1%)	27.52 (15.4%)
Decatur	3.18 (6.1%)	10.21 (19.7%)	10.79 (20.8%)	0.80 (1.5%)	1.98 (3.8%)	3.52 (6.8%)	8.08 (15.6%)	4.66 (9.0%)	2.53 (4.9%)	6.15 (11.8%)
Kankakee	1.36 (3.2%)	4.81 (11.2%)	10.58 (24.7%)	0.60 (1.4%)	1.79 (4.2%)	2.62 (6.1%)	8.58 (20%)	3.93 (9.2%)	1.72 (4.0%)	7.05 (16.4%)
Peoria	8.30 (4.7%)	25.82 (14.6%)	32.28 (18.3%)	2.38 (1.3%)	7.79 (4.4%)	20.64 (11.7%)	33.36 (18.9%)	16.45 (9.3%)	7.52 (4.3%)	21.78 (12.3%)
Rockford	5.11 (3.5%)	26.85 (18.6%)	28.09 (19.4%)	1.91 (1.3%)	5.85 (4.0%)	14.78 (10.2%)	23.32 (16.1%)	12.06 (8.3%)	8.98 (6.2%)	17.91 (12.4%)
Springfield	3.78 (3.5%)	3.18 (2.9%)	16.74 (15.3%)	2.20 (2.0%)	7.41 (6.8%)	10.79 (9.9%)	17.99 (16.5%)	9.86 (9.0%)	6.58 (6.0%)	30.77 (28.2%)
IL	200.86 (3.6%)	563.1 (10%)	1135.65 (20.2%)	102.77 (1.8%)	364.63 (6.5%)	785.27 (14%)	834.4 (14.8%)	510.02 (9.1%)	256.21 (4.6%)	860.52 (15.3%)

\* The Illinois Department of Employment Security does not collect sector employment data for Metro-East

### Total non-farm Employment growth rate Jan 1990 – July 2010



MSA DESCRIPTION: **Bloomington-Normal (B-N):** McLean Co. **Champaign-Urbana (C-U-R):** Champaign Co., Ford Co. & Piatt Co. **Chicago:** Cook Co. IL, DeKalb Co. IL, DuPage Co. IL, Grundy Co. IL, Kane Co. IL, Kendall Co. IL, Lake Co. IL, McHenry Co. IL, Will Co. IL & Kenosha Co. WI **Davenport-Moline-Rock Island (D-R-M):** Henry Co. IL, Mercer Co. IL, Rock Island Co. IL & Scott Co. IA **Decatur:** Macon Co. **Kankakee:** Kankakee Co. **Metro-East:** Bond Co., Calhoun Co., Clinton Co., Jersey Co., Macoupin Co., Madison Co., Monroe Co. & St. Clair Co. **Peoria-Pekin (Peoria):** Marshall Co., Peoria Co., Stark Co., Tazewell Co. & Woodford Co. **Rockford:** Boone Co. & Winnebago Co. **Springfield:** Menard Co. & Sangamon Co. The MSA data (unless noted) were seasonally adjusted to be consistent with state totals.

The Illinois Economic Observatory and Illinois Jobs Index is part of the Institute of Government and Public Affairs at the University of Illinois.