

Illinois Job Index:

MSA Report

Release 04/05/2010	data Jan 1990 / Jan 2010	Issue 13.2	www.real.illinois.edu
-----------------------	-----------------------------	---------------	-----------------------

Note: IDES revised their estimates for the number of jobs at the beginning of 2010.

As a companion to the January 2010 Illinois Job Index that reports a **positive** rating, this MSA Report provides a localized picture on Illinois job growth and allows for comparisons between local economies, Illinois, the Nation and the Rest of the Midwest.

January 2010	Total non-farm employment	Jan 2010 Number of Jobs	Dec 2009 – Jan 2010		Last 12 months	
			Growth Rate (%)	Number of Jobs	Growth Rate (%)	Number of Jobs
	Nation	129,562,000	-0.02	-26,000	-2.99	-3,987,000
	Rest of Midwest (RMW)	18,410,800	-0.06	-11,200	-3.50	-668,000
	Illinois	5,584,200	0.47	26,000	-3.79	-219,700
	Illinois Metro	5,091,800	0.48	24,500	-4.04	-214,200
	Illinois non-Metro (Rural)	492,400	0.31	1,500	-1.11	-5,500
	Illinois Chicago (Upstate)	3,967,600	0.69	27,300	-4.03	-166,600
	Illinois non-Chicago	1,616,600	-0.08	-1,300	-3.18	-53,100

The monthly Illinois Job Index and MSA Report are provided as tools for elected officials, policy leaders and the public. We can better understand the Illinois economy and business climate by comparing and measuring Illinois employment growth rates against those of the Rest of the Midwest (RMW: Indiana, Iowa, Michigan, Missouri, Ohio and Wisconsin) and the Nation. Data and analysis is provided by the Illinois Economic Observatory / Regional Economics Applications Laboratory, University of Illinois. The MSA data (unless noted) were seasonally adjusted to be consistent with state totals.

Talking Points

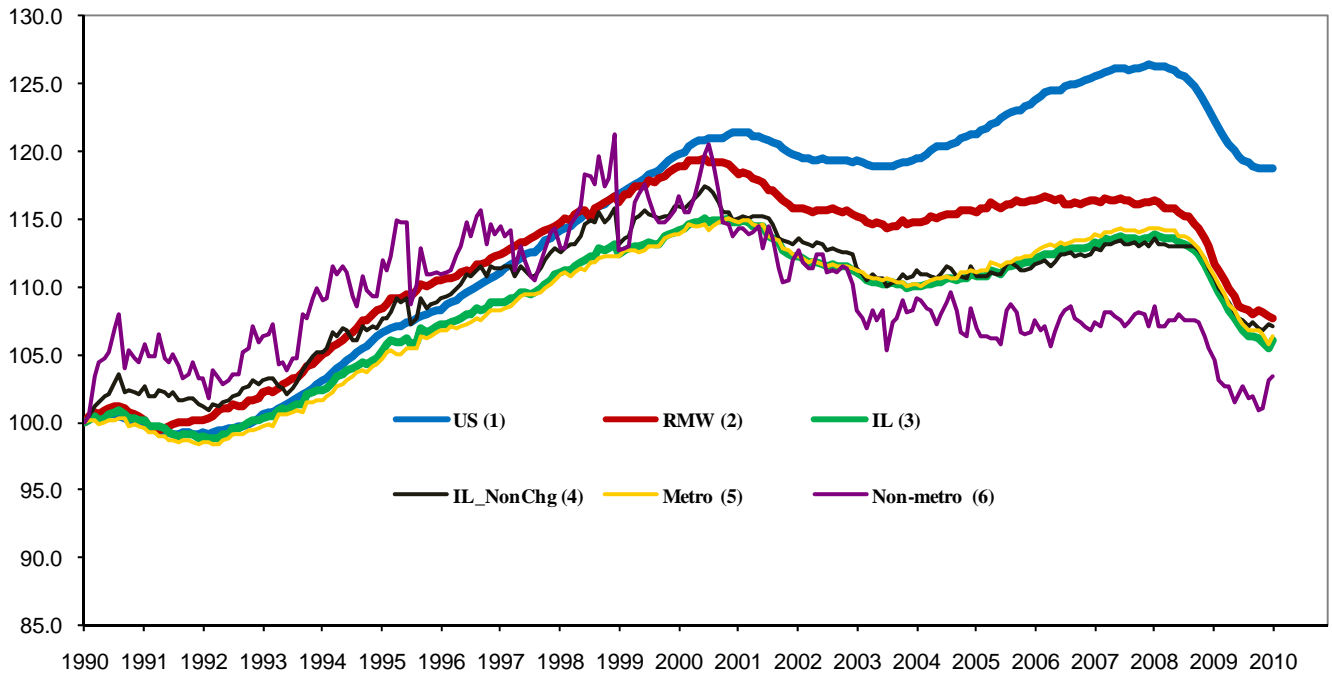
State, Downstate & Metro

- Illinois added 26,000 jobs at a rate of 0.47% in January 2010, compared to a revised 21,800 job loss in last December.
- Illinois has lost 401,800 jobs since the economic crisis developed in December, 2007
- The major geographic divisions, Chicago-Downstate or Metro-Non-metro had mixed performance in January.
- Illinois Non-metro added 1,500 jobs at 0.31% this month; it has 103.4% jobs compared to January 1990. At the same time, Metro posted a gain of 0.48%, adding 24,500 jobs, compared to a revised 31,600 job loss in the previous month.
- Chicago added 27,300 jobs at 0.69% in January. Downstate lost 1,300 jobs at -0.08%, compared to a revised 5,100 job increase in December.
- Over the last 12-months, Illinois recorded a payroll cut of 219,700 jobs at -3.79%. This is better than the highest month -5.89% in August 2009.
- In terms of the 12-month aggregated account, Metro registered a negative -4.04% growth by shedding 214,200 jobs whereas Non-Metro lost 5,500 jobs at -1.11%. Chicago lost 166,600 jobs at -4.03% whereas Downstate lost 53,100 jobs at -3.18%.

MSA page (2-4)

- Illinois Metro posted a positive growth rate of 0.48% by adding 24,500 jobs in the first month of 2010. Four out of the ten MSAs posted positive growth.
- In terms of growth performance, four MSAs posted a net improvement from December to January, five declined in terms of rank.
- Davenport-Rock Island-Moline ranked as the first in terms of month growth performance, while Metro-East ranked as the last.
- Over the last 12-month period, Kankakee grew the fastest at 0.54% by adding 200 jobs. Of the nine MSAs that posted negative growth rates, Peoria had the biggest percentage loss of 6.47% by shedding 12,100 jobs.

Total non-farm Employment growth Jan 1990 – Jan 2010



Talking Points

State, Downstate & Metro

- While the average growth for Illinois between 1990 and 2008 was 0.04%, the average from December 2007 to January 2010 is -0.27%, which is worse than the performance during the 2000-2001 downturn.
- Over the last 12-month period, the average growth rate for Metro was -0.34% and for Non-metro it was -0.09%.
- Illinois performed better than the RMW in terms of yearly aggregated trend in 2008, but in 2009, Illinois's performance is worse than both RMW and the nation.
- Downstate registered a -0.32% average growth rate in 2009 compared to an average gain of 0.04% in 2006, 0.10% growth in 2007, and -0.17% decline in 2008.

By MSA

Total non-farm employment Seasonally adjusted unless noted*	Dec 2009 Number of Jobs	Dec 2009 – Jan 2010			Last 12 months	
		Growth compared to Illinois	Growth Rate %	Number Of Jobs	Growth Rate %	Number of Jobs
Bloomington-Normal (B-N)	88,300	-	-0.19	-200	-2.26	-2,000
Champaign-Urbana (C-U-R)	108,100	-	-0.77	-800	-5.72	-6,600
Chicago	3,967,600	+	0.69	27,300	-4.03	-166,600
Davenport-Rock Island-Moline (D-R-M)	177,700	+	0.72	1,300	-3.84	-7,100
Decatur	51,800	-	0.14	100	-5.89	-3,200
Kankakee	43,600	+	0.52	200	0.54	200
Peoria	174,200	-	-0.16	-300	-6.47	-12,100
Rockford	140,400	-	-0.43	-600	-5.85	-8,700
Springfield	110,300	-	-0.09	-100	-1.36	-1,500
Metro-East	229,900	-	-1.04	-2,400	-2.78	-6,600
Illinois			0.47	26,000	-3.79	-219,700

MSA League Tables*: Non-farm Employment Growth Rate

Monthly growth:

Rank	Dec 2009	Jan 2010	Rank	Change**
1	Kankakee (0.34%)	Davenport-Rock Island-Moline (0.72%)	1	↑(+7)
2	Springfield (0.04%)	Chicago (0.69%)	2	↑(+7)
3	Champaign-Urbana-Rantoul (0.04%)	Kankakee (0.52%)	3	↓(-2)
4	Rockford (-0.09%)	Decatur (0.14%)	4	↑(+2)
5	Bloomington-Normal (-0.1%)	Springfield (-0.09%)	5	↓(-4)
6	Decatur (-0.52%)	Peoria (-0.16%)	6	↑(+1)
7	Peoria (-0.62%)	Bloomington-Normal (-0.19%)	7	↓(-2)
8	Davenport-Rock Island-Moline (-0.65%)	Rockford (-0.43%)	8	↓(-4)
9	Chicago (-0.68%)	Champaign-Urbana-Rantoul (-0.77%)	9	↓(-6)
10	Metro-East (-0.93%)	Metro-East (-1.04%)	10	←(0)

Growth over last 12-months:

Rank	Dec 2009	Jan 2010	Rank	Change**
1	Kankakee (-0.4%)	Kankakee (0.54%)	1	←(0)
2	Springfield (-1.47%)	Springfield (-1.36%)	2	←(0)
3	Metro-East (-1.97%)	Bloomington-Normal (-2.26%)	3	↑(+1)
4	Bloomington-Normal (-2.98%)	Metro-East (-2.78%)	4	↓(-1)
5	Champaign-Urbana-Rantoul (-3.52%)	Davenport-Rock Island-Moline (-3.84%)	5	↑(+1)
6	Davenport-Rock Island-Moline (-5.39%)	Chicago (-4.03%)	6	↑(+1)
7	Chicago (-5.43%)	Champaign-Urbana-Rantoul (-5.72%)	7	↓(-2)
8	Decatur (-6.6%)	Rockford (-5.85%)	8	↑(+2)
9	Peoria (-7.41%)	Decatur (-5.89%)	9	↓(-1)
10	Rockford (-7.51%)	Peoria (-6.47%)	10	↓(-1)

Talking Points

MSA League Tables

- The most remarkable upward moves in January were by Davenport-Rock Island-Moline (8th to 1st) and Chicago (9th to 2nd), which moved up both by 7 spots.
- Decatur (6th to 4th) and Peoria (7th to 6th) both gained in terms of rank from last month.
- Champaign-Urbana-Rantoul (3rd to 9th) experienced deepest fall this month Rockford (4th to 8th), Springfield (1st to 4th), Kankakee (1st to 3rd), and Bloomington-Normal (5th to 7th) also moved down in terms of rank.
- In the 12 months growth league table, the upward moves were recorded for Rockford (10th to 8th), Bloomington-Normal (4th to 3rd), Davenport-Rock Island-Moline (6th to 5th), and Chicago (7th to 6th), while the downward moves were Champaign-Urbana-Rantoul (5th to 7th), Metro-East (3rd to 4th), Decatur (8th to 9th), and Peoria (9th to 10th).
- The other two MSAs maintained the same ranks.
- Kankakee is on the top, while Peoria instead of Rockford is in the last place.

*MSA League Tables are based on revised employment data. For instances of equal growth rate for multiple MSAs ranks are decided based on change of growth rate from previous month.

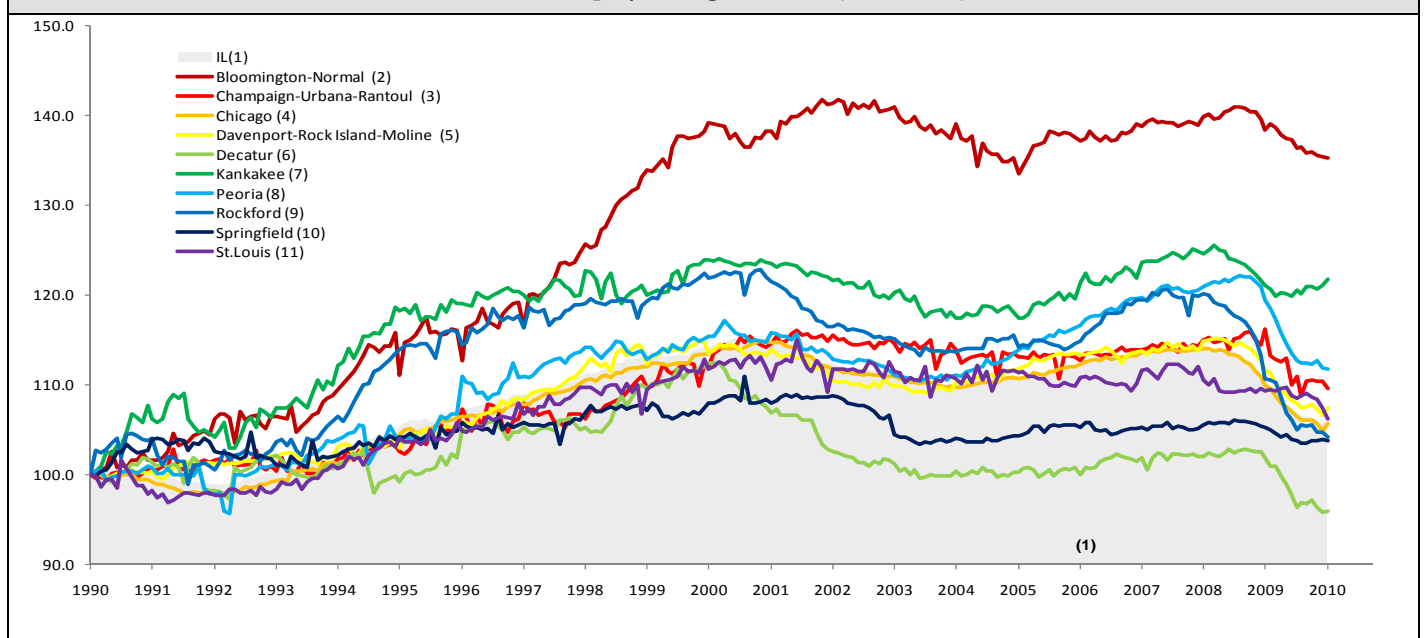
**Changes indicate change in rank position compared to previous month and correspond to the MSA at the right column. Rise is indicated by a '↑' and decline by a '↓' and for an unchanged position a '←' is used. Figures in parenthesis indicate relative rank change from previous month. Shaded area on above chart represents Illinois growth.

January 2010 MSA Employment by Sectors (000s) *

Market Area	Construction	Manufacturing	Trade, transportation & utilities	Information	Financial activities	Professional & business services	Education & health	Leisure & hospitality	Other Services	Government
Bloomington-Normal	2.73 (3.1%)	4.02 (4.6%)	13.39 (15.2%)	0.99 (1.1%)	12.42 (14.1%)	17.07 (19.3%)	9.81 (11.1%)	9.36 (10.6%)	3.39 (3.8%)	15.24 (17.3%)
Champaign-Urbana	3.50 (3.2%)	8.05 (7.5%)	17.36 (16.1%)	2.65 (2.5%)	4.64 (4.3%)	7.49 (6.9%)	13.44 (12.4%)	10.02 (9.3%)	3.23 (3.0%)	37.84 (35%)
Chicago	130.93 (3.3%)	370.24 (9.3%)	802.36 (20.2%)	79.57 (2%)	284.97 (7.2%)	633.70 (16%)	583.34 (14.7%)	362.92 (9.1%)	179.71 (4.5%)	533.31 (13.4%)
Davenport-Rock Island-Moline	7.83 (4.4%)	21.61 (12.2%)	37.94 (21.3%)	3.00 (1.7%)	8.36 (4.7%)	20.32 (11.4%)	25.83 (14.5%)	18.21 (10.2%)	7.33 (4.1%)	27.06 (15.2%)
Decatur	3.30 (6.4%)	10.13 (19.6%)	10.88 (21%)	0.80 (1.5%)	2.01 (3.9%)	3.31 (6.4%)	8.12 (15.7%)	4.64 (9.0%)	2.66 (5.1%)	5.88 (11.4%)
Kankakee	1.44 (3.3%)	4.85 (11.1%)	10.43 (23.9%)	0.61 (1.4%)	1.81 (4.1%)	2.79 (6.4%)	8.7 (19.9%)	4.03 (9.2%)	1.75 (4.0%)	7.16 (16.4%)
Peoria	8.40 (4.8%)	24.3 (13.9%)	32.49 (18.7%)	2.46 (1.4%)	7.85 (4.5%)	20.51 (11.8%)	33.11 (19%)	16.4 (9.4%)	7.39 (4.2%)	21.53 (12.4%)
Rockford	5.26 (3.7%)	25.43 (18.1%)	27.00 (19.2%)	1.95 (1.4%)	5.93 (4.2%)	14.41 (10.3%)	23.11 (16.5%)	11.82 (8.4%)	9.14 (6.5%)	16.5 (11.8%)
Springfield	4.05 (3.7%)	3.26 (3.0%)	16.93 (15.4%)	2.22 (2.0%)	7.50 (6.8%)	10.82 (9.8%)	18.16 (16.5%)	10.0 (9.1%)	6.46 (5.9%)	30.75 (27.9%)
IL	195.48 (3.5%)	554.75 (9.9%)	1126.84 (20.2%)	104.36 (1.9%)	367.71 (6.6%)	770.45 (13.8%)	824.9 (14.8%)	508.6 (9.1%)	254.29 (4.6%)	855.06 (15.3%)

* The Illinois Department of Employment Security does not collect sector employment data for Metro-East

Total non-farm Employment growth rate Jan 1990 – Jan 2010



MSA DESCRIPTION: **Bloomington-Normal (B-N):** McLean Co. **Champaign-Urbana (C-U-R):** Champaign Co., Ford Co. & Piatt Co. **Chicago:** Cook Co. IL, DeKalb Co. IL, DuPage Co. IL, Grundy Co. IL, Kane Co. IL, Kendall Co. IL, Lake Co. IL, McHenry Co. IL, Will Co. IL & Kenosha Co. WI **Davenport-Moline-Rock Island (D-R-M):** Henry Co. IL, Mercer Co. IL, Rock Island Co. IL & Scott Co. IA **Decatur:** Macon Co. **Kankakee:** Kankakee Co. **Metro-East:** Bond Co., Calhoun Co., Clinton Co., Jersey Co., Macoupin Co., Madison Co., Monroe Co. & St. Clair Co. **Peoria-Pekin (Peoria):** Marshall Co., Peoria Co., Stark Co., Tazewell Co. & Woodford Co. **Rockford:** Boone Co. & Winnebago Co. **Springfield:** Menard Co. & Sangamon Co.

The MSA data (unless noted) were seasonally adjusted to be consistent with state totals.

The Illinois Economic Observatory is part of the Institute of Government and Public Affairs at the University of Illinois.