

# Illinois Job Index:

## MSA Report

Release 02/04/2011	data Jan 1990 / Dec 2010	Issue 14.01	www.real.illinois.edu
-----------------------	-----------------------------	----------------	-----------------------

Note: IDES revised their estimates for the number of jobs at the beginning of 2010.

As a companion to the Oct 2010 Illinois Job Index that reports an positive rating, this MSA Report provides a localized picture on Illinois job growth and allows for comparisons between local economies, Illinois, the Nation and the Rest of the Midwest.

Jan 2011	Total non-farm employment	Dec 2010 Number of Jobs	Nov 2010 – Dec 2010		Last 12 months	
			Growth Rate (%)	Number of Jobs	Growth Rate (%)	Number of Jobs
	Nation	130,712,000	0.08	103,000	0.87	1,124,000
	Rest of Midwest (RMW)	18,470,900	-0.22	-41,400	0.27	48,900
	Illinois	5,604,500	-0.17	-9,400	0.83	46,300
	Illinois Metro	5,029,400	-0.27	-13,800	-0.76	-38,500
	Illinois non-Metro (Rural)	575,100	0.77	4,400	17.31	84,800
	Illinois Chicago (Upstate)	3,903,900	-0.31	-12,100	-0.94	-36,900
	Illinois non-Chicago	1,700,600	0.16	2,700	5.14	83,200

The monthly Illinois Job Index and MSA Report are provided as tools for elected officials, policy leaders and the public. We can better understand the Illinois economy and business climate by comparing and measuring Illinois employment growth rates against those of the Rest of the Midwest (RMW: Indiana, Iowa, Michigan, Missouri, Ohio and Wisconsin) and the Nation. Data and analysis is provided by the Illinois Economic Observatory / Regional Economics Applications Laboratory, University of Illinois. The MSA data (unless noted) were seasonally adjusted to be consistent with state totals.

### Talking Points

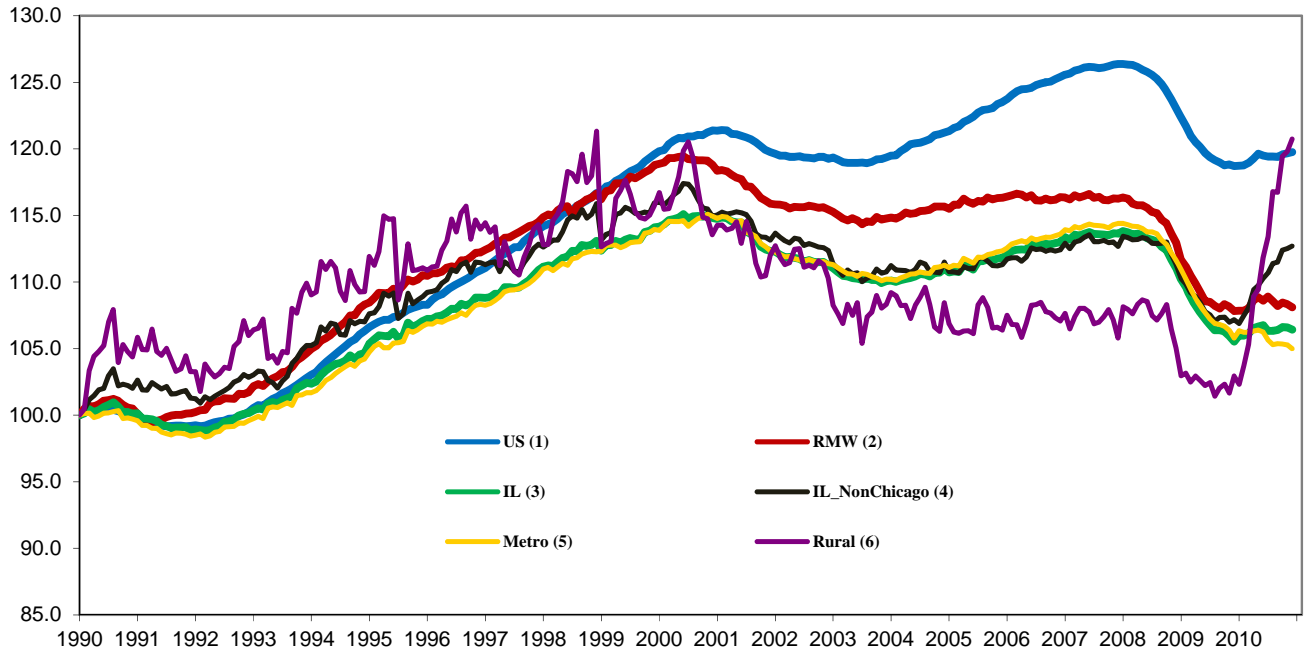
#### State, Downstate & Metro

- Illinois shed 9,400 jobs in December 2010 at a rate of -0.17%, compared with a revised 1,600 job loss in November. Compared to December 2009, Illinois added 46,300 jobs, the largest monthly year-over-year increase since November 2007.
- Illinois has lost 381,500 jobs since the economic crisis developed in December, 2007
- The major geographic divisions, Chicago-Downstate and Metro-Rural had mixed performances in December.
- Illinois Rural area added 4,400 jobs at 0.77% this month, compared to a revised 1,900 job gain in November. Rural recovered to the same employment level of June 2000. At the same time, Metro shed 13,800 jobs, compared to a revised -3,500 job loss in the previous month.
- Chicago shed 12,100 jobs at -0.31% in December 2010, compared to a revised -3,200 job loss last month. On the other hand, Downstate added 2,700 jobs at 0.16%, compared to a revised 1,600 job gain in November.
- Over the last 12-months, Illinois recorded a payroll increase of 46,300 jobs at 0.83%. This is the largest monthly year-over-year increase since November 2007.
- In terms of the 12-month aggregated account, Metro registered a negative -0.76% growth by shedding 38,500 jobs whereas Rural added 84,800 jobs at 17.31%. Chicago lost 36,900 jobs at -0.94% whereas Downstate added 83,200 jobs at 5.14%.

#### MSA page (2-4)

- Illinois Metro shed 13,800 jobs in the last month of 2010. Two out of the ten MSAs posted positive growth in December.
- In terms of growth performance, five MSAs posted a net improvement from November to December, four declined in terms of rank.
- Kankakee ranked first in terms of monthly growth performance, while Decatur remained in the last place.
- Over the last 12-month period, Davenport-Rock Island-Moline stayed in the first place by adding 1,400 jobs while Decatur dropped to the last place.

### Total non-farm Employment growth Jan 1990 – Dec 2010



### Talking Points

#### State, Downstate & Metro

- While the average growth for Illinois between 1990 and 2008 was 0.04%, the average from December 2007 to Dec 2010 is -0.18%, which is worse than the performance during the 2000-2001 downturns.
- Since the economic crisis in December, 2007, the average growth for Metro is -0.23 while for Rural is 0.33%. The same rate for Downstate is -0.01% while for Upstate is -0.25%.
- Over the last 12-month period, the average growth rate for Metro was -0.06% and for Rural it was 1.35%.
- Illinois performed worse than the RMW and the nation in terms of yearly aggregated trend in 2009. In 2010, Illinois's performance is better than the RMW and compare favorably to the nation.
- Downstate registered a 0.42% average growth rate in 2010 compared to an average gain of 0.10% growth in 2007, -0.17% decline in 2008, and -0.32% decline in 2009.

### By MSA

Market Area	Dec 2010 Number of Jobs	Nov 2010 –Dec 2010			Last 12 months	
		Growth compare d to Illinois	Growth Rate %	Number Of Jobs	Growth Rate %	Number of Jobs
Bloomington-Normal (B-N)	88,300	-	-0.22	-200	-0.26	-200
Champaign-Urbana (C-U-R)	108,700	+	-0.12	-100	-0.23	-300
Chicago	3,903,900	-	-0.31	-12,100	-0.94	-36,900
Davenport-Rock Island-Moline (D-R-M)	178,300	-	-0.35	-600	0.79	1,400
Decatur	51,100	-	-0.48	-200	-1.12	-600
Kankakee	43,000	+	0.09	50	-0.86	-400
Peoria	174,100	-	-0.26	-500	-0.10	-200
Rockford	142,100	+	-0.10	-100	0.62	900
Springfield	109,400	+	-0.12	-100	-0.69	-800
Metro-East	230,600	+	0.08	200	-0.66	-1,500
<b>Illinois</b>			<b>-0.17</b>	<b>-9,400</b>	<b>0.83</b>	<b>46,300</b>

# MSA League Tables\*: Non-farm Employment Growth Rate

## Monthly growth:

Rank	Nov 2010	Dec 2010	Rank	Change**
1	Davenport-Rock Island-Moline(0.17%)	Kankakee(0.09%)	1	↑(+6)
2	Champaign-Urbana-Rantoul (0.15%)	Metro-East(0.08%)	2	↑(+1)
3	Metro-East (0.12%)	Rockford (-0.1%)	3	↑(+2)
4	Springfield (0.08%)	Champaign-Urbana-Rantoul (-0.12%)	4	↓(-2)
5	Rockford (0.03%)	Springfield (-0.12%)	5	↓(-1)
6	Chicago (-0.08%)	Bloomington-Normal (-0.22%)	6	↑(+2)
7	Kankakee (-0.1%)	Peoria (-0.26%)	7	↑(+2)
8	Bloomington-Normal (-0.18%)	Chicago (-0.31%)	8	↓(-2)
9	Peoria(-0.3%)	Davenport-Rock Island-Moline (-0.35%)	9	↓(-8)
10	Decatur (-0.64%)	Decatur (-0.48%)	10	←(+0)

## Growth over last 12-months:

Rank	Nov 2010	Dec 2010	Rank	Change**
1	Davenport-Rock Island-Moline (0.97%)	Davenport-Rock Island-Moline (0.79%)	1	←(+0)
2	Rockford (0.83%)	Rockford (0.62%)	2	←(+0)
3	Bloomington-Normal (0.02%)	Peoria (-0.1%)	3	↑(+2)
4	Champaign-Urbana-Rantoul (0.01%)	Champaign-Urbana-Rantoul (-0.23%)	4	←(+0)
5	Peoria (-0.44%)	Bloomington-Normal (-0.26%)	5	↓(-2)
6	Springfield (-0.52%)	Metro-East (-0.66%)	6	↑(+4)
7	Kankakee (-0.66%)	Springfield (-0.69%)	7	↓(-1)
8	Decatur (-1.13%)	Kankakee (-0.86%)	8	↓(-1)
9	Chicago (-1.25%)	Chicago (-0.94%)	9	←(+0)
10	Metro-East (-1.62%)	Decatur (-1.12%)	10	↓(-2)

## Talking Points

### MSA League Tables

- Davenport-Rock Island-Moline experienced the deepest fall this month.
- Champaign-Urbana-Rantoul (2<sup>nd</sup> to 4<sup>th</sup>), Springfield (4<sup>th</sup> to 5<sup>th</sup>) and Chicago (6<sup>th</sup> to 8<sup>th</sup>) also dropped in terms of rank from last month.
- The most remarkable upward move in December was Kankakee (7<sup>th</sup> to 1<sup>st</sup>).
- Metro-East (4<sup>th</sup> to 2<sup>nd</sup>), Rockford (5<sup>th</sup> to 3<sup>rd</sup>), Bloomington-Normal (8<sup>th</sup> to 6<sup>th</sup>) and Peoria (9<sup>th</sup> to 7<sup>th</sup>) also gained in terms of rank.
- In the 12 months growth league table, upward moves were recorded for Metro-East (10<sup>th</sup> to 6<sup>th</sup>) and Peoria(5<sup>th</sup> to 3<sup>rd</sup>) while downward moves were recorded for Bloomington-Normal(3<sup>rd</sup> to 5<sup>th</sup>), Springfield (6<sup>th</sup> to 7<sup>th</sup>) and Kankakee (7<sup>th</sup> to 8<sup>th</sup>).
- Davenport-Rock Island-Moline, Rockford, Champaign-Urbana-Rantoul, Chicago remained unchanged in terms of rank.

\*MSA League Tables are based on revised employment data. For instances of equal growth rate for multiple MSAs ranks are decided based on change of growth rate from previous month.

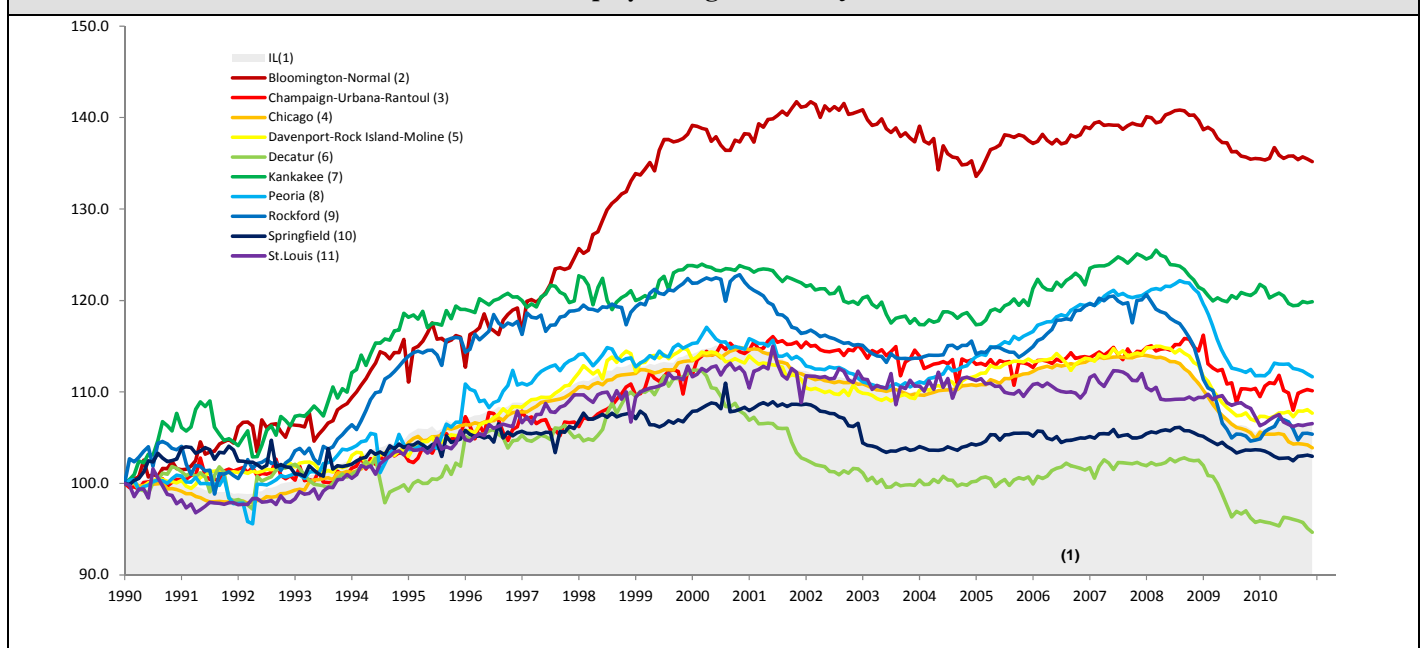
\*\*Changes indicate change in rank position compared to previous month and correspond to the MSA at the right column. Rise is indicated by a '↑' and decline by a '↓' and for an unchanged position a '←' is used. Figures in parenthesis indicate relative rank change from previous month. Shaded area on above chart represents Illinois growth.

Dec 2010 MSA Employment by Sectors (000s) \*

Market Area	Construction	Manufacturing	Trade, transportation & utilities	Information	Financial activities	Professional & business services	Education & health	Leisure & hospitality	Other Services	Government
Bloomington-Normal	2.86 (3.2%)	4.04 (4.6%)	13.44 (15.2%)	1.00 (1.1%)	12.37 (14.0%)	16.82 (19.1%)	9.86 (11.2%)	9.25 (10.5%)	3.42 (3.9%)	15.13 (17.1%)
Champaign-Urbana	3.58 (3.3%)	7.95 (7.3%)	17.43 (16.0%)	2.62 (2.4%)	4.53 (4.2%)	7.61 (7.0%)	13.54 (12.5%)	9.98 (9.2%)	3.26 (3.0%)	38.21 (35.2%)
Chicago	121.5 (3.1%)	370.43 (9.5%)	790.96 (20.3%)	78.51 (2.0%)	279.64 (7.2%)	616.69 (15.8%)	585.17 (15.0%)	353.84 (9.1%)	176.79 (4.5%)	528.78 (13.5%)
Davenport-Rock Island-Moline	0.80 (2.7%)	4.74 (16.3%)	6.83 (23.4%)	0.30 (1%)	1.40 (4.8%)	2.22 (7.6%)	3.14 (10.8%)	2.26 (7.8%)	1.21 (4.2%)	6.28 (21.5%)
Decatur	8.22 (4.6%)	22.15 (12.4%)	37.77 (21.2%)	2.86 (1.6%)	8.22 (4.6%)	20.81 (11.7%)	26.16 (14.7%)	17.88 (10%)	7.51 (4.2%)	26.85 (15.1%)
Kankakee	3.07 (6.0%)	10.19 (19.9%)	10.68 (20.9%)	0.80 (1.6%)	2.00 (3.9%)	3.36 (6.6%)	8.12 (15.9%)	4.43 (8.7%)	2.53 (4.9%)	5.89 (11.5%)
Peoria	1.43 (3.3%)	4.86 (11.3%)	10.27 (23.9%)	0.60 (1.4%)	1.79 (4.2%)	2.57 (6.0%)	8.72 (20.3%)	3.81 (8.9%)	1.74 (4.0%)	7.23 (16.8%)
Rockford	8.49 (4.9%)	25.37 (14.6%)	31.49 (18.1%)	2.41 (1.4%)	7.65 (4.4%)	20.51 (11.8%)	33.17 (19.1%)	16.22 (9.3%)	7.48 (4.3%)	21.49 (12.3%)
Springfield	5.12 (3.6%)	26.35 (18.5%)	27.23 (19.2%)	1.89 (1.3%)	5.89 (4.1%)	14.31 (10.1%)	23.36 (16.4%)	11.86 (8.3%)	8.90 (6.3%)	16.98 (12.0%)
IL	201.00 (3.6%)	562.26 (10.0%)	1133.26 (20.2%)	105.77 (1.9%)	360.74 (6.4%)	786.22 (14.0%)	837.13 (14.9%)	505.8 (9.0%)	258.62 (4.6%)	854.95 (15.2%)

\* The Illinois Department of Employment Security does not collect sector employment data for Metro-East

Total non-farm Employment growth rate Jan 1990 –Dec 2010



MSA DESCRIPTION: **Bloomington-Normal (B-N):** McLean Co. **Champaign-Urbana (C-U-R):** Champaign Co., Ford Co. & Piatt Co. **Chicago:** Cook Co. IL, DeKalb Co. IL, DuPage Co. IL, Grundy Co. IL, Kane Co. IL, Kendall Co. IL, Lake Co. IL, McHenry Co. IL, Will Co. IL & Kenosha Co. WI **Davenport-Moline-Rock Island (D-R-M):** Henry Co. IL, Mercer Co. IL, Rock Island Co. IL & Scott Co. IA **Decatur:** Macon Co. **Kankakee:** Kankakee Co. **Metro-East:** Bond Co., Calhoun Co., Clinton Co., Jersey Co., Macoupin Co., Madison Co., Monroe Co. & St. Clair Co. **Peoria-Pekin (Peoria):** Marshall Co., Peoria Co., Stark Co., Tazewell Co. & Woodford Co. **Rockford:** Boone Co. & Winnebago Co. **Springfield:** Menard Co. & Sangamon Co. The MSA data (unless noted) were seasonally adjusted to be consistent with state totals.

The Illinois Economic Observatory and Illinois Jobs Index is part of the Institute of Government and Public Affairs at the University of Illinois.