

Illinois Job Index:

MSA Report

Release 08/01/2011	data Jan 1990 / June 2011	Issue 14.07	www.real.illinois.edu
------------------------------	-------------------------------------	-----------------------	------------------------------

Note: IDES revised their estimates for the number of jobs at the beginning of 2011.

As a companion to the June 2011 Illinois Job Index that reports an positive rating, this MSA Report provides a localized picture on Illinois job growth and allows for comparisons between local economies, Illinois, the Nation and the Rest of the Midwest.

July 2011	Total non-farm employment	June 2011 Number of Jobs	May 2011 – Jun 2011		Last 12 months	
			Growth Rate (%)	Number of Jobs	Growth Rate (%)	Number of Jobs
	Nation	131,017,000	0.01	18,000	0.80	1,036,000
	Rest of Midwest (RMW)	18,717,700	0.06	12,000	0.91	168,800
	Illinois	5,677,700	-0.13	-7,200	1.05	59,000
	Illinois Metro	5,166,900	0.00	0	0.73	37,700
	Illinois non-Metro (Rural)	510,800	-1.44	-7,500	4.36	21,300
	Illinois Chicago (Upstate)	4,017,000	-0.05	-2,100	0.67	26,700
	Illinois non-Chicago	1,660,700	-0.31	-5,100	1.98	32,300

The monthly Illinois Job Index and MSA Report are provided as tools for elected officials, policy leaders and the public. We can better understand the Illinois economy and business climate by comparing and measuring Illinois employment growth rates against those of the Rest of the Midwest (RMW: Indiana, Iowa, Michigan, Missouri, Ohio and Wisconsin) and the Nation. Data and analysis is provided by the Illinois Economic Observatory / Regional Economics Applications Laboratory, University of Illinois. The MSA data (unless noted) were seasonally adjusted to be consistent with state totals.

Talking Points

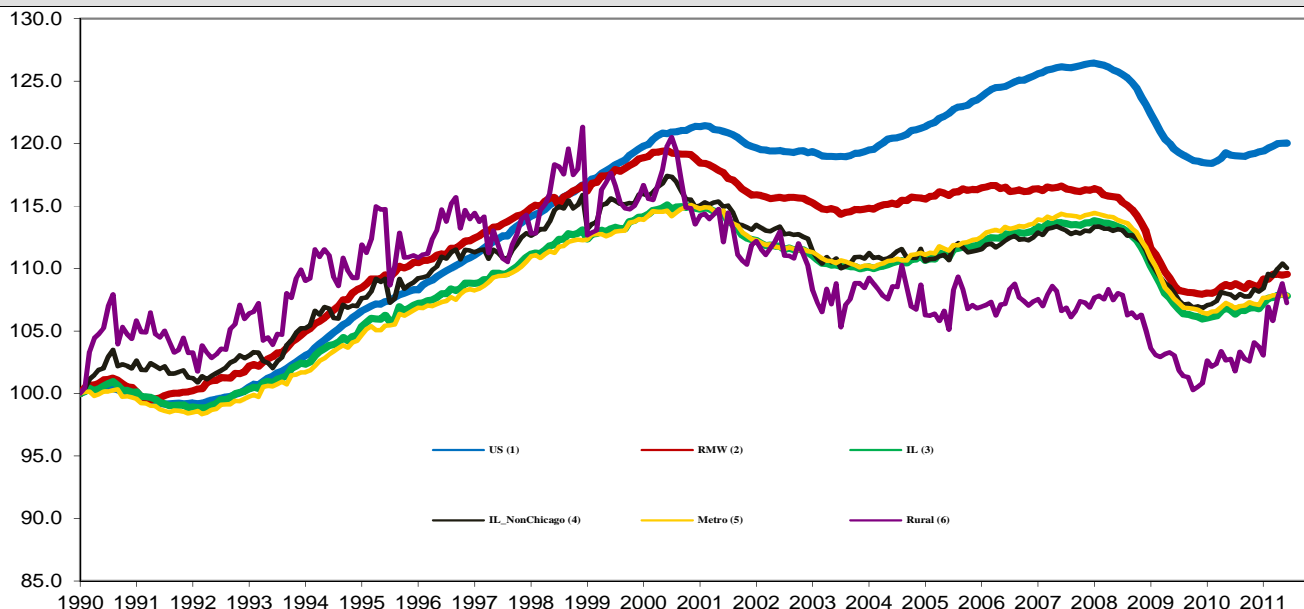
State, Downstate & Metro

- Illinois shed 7,200 jobs in Jun 2011 at a rate of -0.13%, compared with a revised 4,900 job gain in May 2011. Compared to Jun 2010, Illinois has added 59,000 jobs. The three-month moving average of jobs, a more stable measure of labor market, was up by 2,300 jobs per month.
- Illinois has lost 307,500 jobs since the economic crisis developed in December 2007.
- Since January 2010 when Illinois employment resumed after the national recession, Illinois has added 97,200 new jobs.
- The major geographic divisions, Chicago-Downstate had negative performance while Metro-Rural had mixed performances in June.
- Illinois Rural area shed 7,500 jobs at -1.44% this month, compared to a revised 5,600 job gain in May. At the same time, Metro remained unchanged in employment, compared to a revised -700 job loss in the previous month.
- Chicago shed 2,100 jobs at -0.05% in Jun 2011, compared to a revised -1,200 job loss last month. On the other hand, Downstate shed 5,100 jobs at -0.31%, compared to a revised 6,100 job gains in May.
- In terms of the 12-month aggregated account, Metro registered a positive 0.73% growth by adding 37,700 jobs whereas Rural added 21,300 jobs at 4.36%. Chicago added 26,700 jobs at 0.67% whereas Downstate added 32,300 jobs at 1.98%.
- Through Jun 2011, the cumulative job growth for Metro, Rural, Chicago and Downstate compared to January 1990 stood at 7.86%, 7.24%, 6.90% and 10.04%, respectively.

MSA page (2-4)

- Illinois Metro remained unchanged in employment in Jun of 2011. Five out of the ten MSAs posted positive growth in Jun.
- In terms of growth performance, four MSAs posted a net improvement from May to Jun, six declined in terms of rank.
- Champaign-Urbana-Rantoul dropped to the last place in terms of monthly growth performance, while Davenport-Rock Island-Moline climbed up to the first place.
- Over the last 12-month period, Kankakee stayed in the first place while Champaign-Urbana-Rantoul remained in the last place for three consecutive months.

Total non-farm Employment growth Jan 1990 –Jun 2011



Talking Points

State, Downstate & Metro

- While the average growth for Illinois between 1990 and 2008 was 0.04%, the average from December 2007 to June 2011 is -0.12%. It is worse than the performance during the 2000-2001 downturns which was -0.07%.
- Since the economic crisis in December 2007, the average growth for Metro is -0.13 while for Rural it is 0.00%. The same rate for Downstate is -0.06% while for Upstate it is -0.15%.
- Over the last 12-month period, the average growth rate for Metro was 0.06% and for Rural it was 0.37%.
- Illinois performed worse than the RMW and the nation in terms of yearly aggregate trend in 2009. In 2010, Illinois's performance is better than the RMW and compared favorably to the nation. So far in 2011, Illinois performed better than the nation and as well as the RMW. From Jan to Jun 2011, the average growth rate for Illinois is 0.16% while for the RMW is 0.16% and for the nation is 0.10%.
- Downstate registered a 0.29% average growth rate in 2011 compared to an average gain of 0.10% growth in 2007, -0.17% decline in 2008, -0.32% decline in 2009 and 0.09% growth in 2010.

By MSA

Market Area	Jun 2011 Number of Jobs	May 2011 – Jun 2011			Last 12 months	
		Growth compared to Illinois	Growth Rate %	Number Of Jobs	Growth Rate %	Number of Jobs
Bloomington-Normal (B-N)	90,120	-	-0.75	-700	-0.71	-600
Champaign-Urbana (C-U-R)	106,200	-	-0.75	-800	-3.04	-3,300
Chicago	4,017,000	+	-0.05	-2,100	0.67	26,700
Davenport-Rock Island-Moline (D-R-M)	183,400	+	1.23	2,200	2.66	4,800
Decatur	52,200	-	0.59	300	-0.30	-200
Kankakee	44,700	-	-0.65	-300	4.15	1,800
Peoria	183,300	+	0.25	500	2.93	5,200
Rockford	145,200	+	0.30	400	0.65	900
Springfield	112,000	+	0.78	900	0.61	700
Metro-East	232,800	+	-0.09	-200	0.73	1,700
Illinois			-0.13	-7,200	1.05	59,000

MSA League Tables*: Non-farm Employment Growth Rate

Monthly growth:

Rank	May 2011	Jun 2011	Rank	Change**
1	Kankakee (2.28%)	Davenport-Rock Island-Moline (1.23%)	1	↑(+2)
2	Peoria (0.51%)	Springfield (0.78%)	2	↑(+7)
3	Davenport-Rock Island-Moline (0.26%)	Decatur (0.59%)	3	↑(+7)
4	Metro-East (0.08%)	Rockford (0.3%)	4	↑(+3)
5	Chicago (-0.03%)	Peoria (0.25%)	5	↓(-3)
6	Bloomington-Normal (-0.29%)	Chicago (-0.05%)	6	↓(-1)
7	Rockford (-0.31%)	Metro-East (-0.09%)	7	↓(-3)
8	Champaign-Urbana-Rantoul (-0.42%)	Kankakee (-0.65%)	8	↓(-7)
9	Springfield (-0.55%)	Bloomington-Normal (-0.75%)	9	↓(-3)
10	Decatur (-0.64%)	Champaign-Urbana-Rantoul (-0.75%)	10	↓(-2)

Growth over last 12-months:

Rank	May 2011	Jun 2011	Rank	Change**
1	Kankakee (4.88%)	Kankakee (4.15%)	1	←(+0)
2	Peoria (3.15%)	Peoria (2.93%)	2	←(+0)
3	Davenport-Rock Island-Moline (1.33%)	Davenport-Rock Island-Moline (2.66%)	3	←(+0)
4	Chicago (0.56%)	Metro-East (0.73%)	4	↑(+1)
5	Metro-East (0.4%)	Chicago (0.67%)	5	↓(-1)
6	Rockford (0.09%)	Rockford (0.65%)	6	←(+0)
7	Springfield (-0.23%)	Springfield (0.61%)	7	←(+0)
8	Bloomington-Normal (-0.4%)	Decatur (-0.3%)	8	↑(+1)
9	Decatur (-1.45%)	Bloomington-Normal (-0.71%)	9	↓(-1)
10	Champaign-Urbana-Rantoul (-2.88%)	Champaign-Urbana-Rantoul (-3.04%)	10	←(+0)

Talking Points

MSA League Tables

- Kankakee experienced the deepest fall this month (1st to 8th).
- Peoria (2nd to 5th), Bloomington-Normal (2nd to 5th), Champaign-Urbana-Rantoul (8rd to 10th), Chicago (5th to 6th) and Metro-East (4th to 7th) also dropped in terms of rank from last month.
- The most remarkable upward move in June was recorded for Decatur (10th to 3rd) and Springfield (9th to 2nd).
- Rockford (7th to 4th) and Davenport-Rock Island-Moline (3rd to 1st) also gained in terms of rank from last month.
- In the 12 months growth league table, upward moves were recorded for Metro-East (5th to 4th) and Decatur (9th to 8th) while downward moves were recorded for Chicago (4th to 5th) and Bloomington-Normal (8th to 9th).
- Peoria, Davenport-Rock Island-Moline, Rockford, Springfield remained in the same place.
- Kankakee remained unchanged while Champaign-Urbana-Rantoul stayed in the last place for the fourth consecutive month.

*MSA League Tables are based on revised employment data. For instances of equal growth rate for multiple MSAs ranks are decided based on change of growth rate from previous month.

**Changes indicate change in rank position compared to previous month and correspond to the MSA at the right column. Rise is indicated by a '↑' and decline by a '↓' and for an unchanged position a '←' is used. Figures in parenthesis indicate relative rank change from previous month.

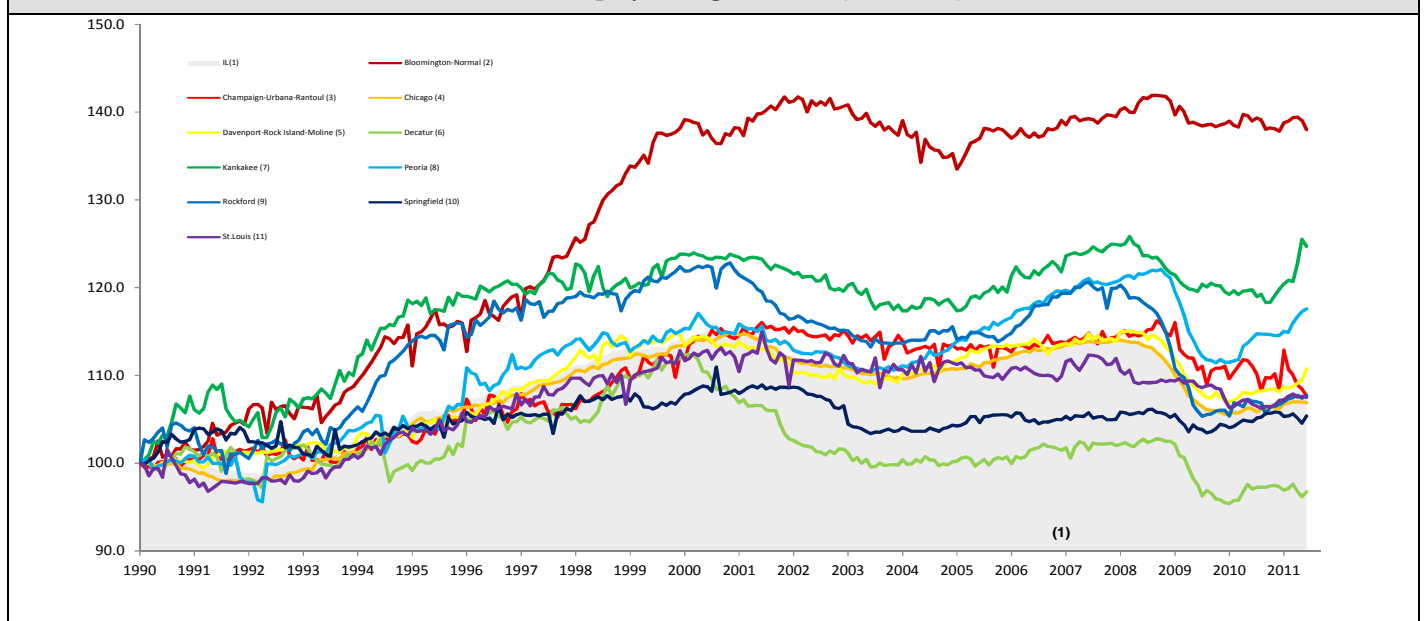
Shaded area on above chart represents Illinois growth.

Jun 2011 MSA Employment by Sectors (000s) *

Market Area	Construction	Manufacturing	Trade, transportation & utilities	Information	Financial activities	Professional & business services	Education & health	Leisure & hospitality	Other Services	Government
Bloomington-Normal	2.57 (2.9%)	4.01 (4.4%)	13.55 (15.0%)	0.79 (0.9%)	11.89 (13.2%)	17.74 (19.7%)	11.39 (12.6%)	9.80 (10.9%)	3.28 (3.6%)	15.19 (16.9%)
Champaign-Urbana	3.39 (3.2%)	7.88 (7.4%)	17.49 (16.5%)	2.26 (2.1%)	4.31 (4.1%)	7.58 (7.1%)	12.73 (12.0%)	10.03 (9.4%)	3.13 (2.9%)	37.46 (35.3%)
Chicago	141.87 (3.5%)	377.02 (9.4%)	816.93 (20.3%)	73.97 (1.8%)	276.63 (6.9%)	669.91 (16.7%)	594.67 (14.8%)	366.84 (9.1%)	179.24 (4.5%)	520.66 (13%)
Davenport-Rock Island-Moline	0.91 (3.1%)	5.06 (17.4%)	6.52 (22.4%)	0.31 (1.1%)	1.31 (4.5%)	2.12 (7.3%)	3.15 (10.8%)	2.19 (7.5%)	1.24 (4.3%)	6.32 (21.7%)
Decatur	9.28 (5.1%)	24.46 (13.3%)	37.11 (20.2%)	2.72 (1.5%)	8.22 (4.5%)	21.28 (11.6%)	25.57 (13.9%)	19.03 (10.4%)	7.29 (4.0%)	28.08 (15.3%)
Kankakee	3.73 (7.1%)	10.77 (20.6%)	10.6 (20.3%)	0.70 (1.3%)	1.97 (3.8%)	3.56 (6.8%)	7.74 (14.8%)	4.77 (9.1%)	2.36 (4.5%)	6.04 (11.6%)
Peoria	1.36 (3.0%)	4.78 (10.7%)	10.72 (24%)	0.50 (1.1%)	1.97 (4.4%)	3.13 (7.0%)	9.06 (20.3%)	4.19 (9.4%)	1.85 (4.1%)	7.14 (16%)
Rockford	8.55 (4.7%)	28.78 (15.7%)	34.04 (18.6%)	2.37 (1.3%)	7.94 (4.3%)	23.7 (12.9%)	31.84 (17.4%)	16.74 (9.1%)	7.91 (4.3%)	21.30 (11.6%)
Springfield	5.32 (3.7%)	27.76 (19.1%)	27.98 (19.3%)	1.62 (1.1%)	5.70 (3.9%)	15.08 (10.4%)	22.9 (15.8%)	12.23 (8.4%)	8.70 (6.0%)	17.62 (12.1%)
IL	207.78 (3.7%)	572.96 (10.1%)	1146.32 (20.2%)	96.78 (1.7%)	356.48 (6.3%)	821.02 (14.5%)	845.9 (14.9%)	523.18 (9.2%)	255.77 (4.5%)	846.02 (14.9%)

* The Illinois Department of Employment Security does not collect sector employment data for Metro-East

Total non-farm Employment growth rate Jan 1990 –Jun 2011



MSA DESCRIPTION: **Bloomington-Normal (B-N):** McLean Co. **Champaign-Urbana (C-U-R):** Champaign Co., Ford Co. & Piatt Co. **Chicago:** Cook Co. IL, DeKalb Co. IL, DuPage Co. IL, Grundy Co. IL, Kane Co. IL, Kendall Co. IL, Lake Co. IL, McHenry Co. IL, Will Co. IL & Kenosha Co. WI **Davenport-Moline-Rock Island (D-R-M):** Henry Co. IL, Mercer Co. IL, Rock Island Co. IL & Scott Co. IA **Decatur:** Macon Co. **Kankakee:** Kankakee Co. **Metro-East:** Bond Co., Calhoun Co., Clinton Co., Jersey Co., Macoupin Co., Madison Co., Monroe Co. & St. Clair Co. **Peoria-Pekin (Peoria):** Marshall Co., Peoria Co., Stark Co., Tazewell Co. & Woodford Co. **Rockford:** Boone Co. & Winnebago Co. **Springfield:** Menard Co. & Sangamon Co. The MSA data (unless noted) were seasonally adjusted to be consistent with state totals.

The Illinois Economic Observatory and Illinois Jobs Index is part of the Institute of Government and Public Affairs at the University of Illinois.