

Illinois Job Index:

MSA Report

Release 07/5/2011	data Jan 1990 / May 2011	Issue 14.06	www.real.illinois.edu
-----------------------------	------------------------------------	-----------------------	------------------------------

Note: IDES revised their estimates for the number of jobs at the beginning of 2011.

As a companion to the June 2011 Illinois Job Index that reports an positive rating, this MSA Report provides a localized picture on Illinois job growth and allows for comparisons between local economies, Illinois, the Nation and the Rest of the Midwest.

June 2011	Total non-farm employment	May 2011 Number of Jobs	Apr 2011 – May 2011		Last 12 months	
			Growth Rate (%)	Number of Jobs	Growth Rate (%)	Number of Jobs
	Nation	131,043,000	0.04	54,000	0.67	870,000
	Rest of Midwest (RMW)	18,711,400	-0.01	-2,800	0.73	134,700
	Illinois	5,688,200	0.14	8,200	1.09	61,600
	Illinois Metro	5,168,100	-0.01	-700	0.61	31,200
	Illinois non-Metro (Rural)	520,100	1.74	8,900	6.21	30,400
	Illinois Chicago (Upstate)	4,019,400	-0.05	-1,900	0.59	23,600
	Illinois non-Chicago	1,668,800	0.61	10,100	2.33	38,000

The monthly Illinois Job Index and MSA Report are provided as tools for elected officials, policy leaders and the public. We can better understand the Illinois economy and business climate by comparing and measuring Illinois employment growth rates against those of the Rest of the Midwest (RMW: Indiana, Iowa, Michigan, Missouri, Ohio and Wisconsin) and the Nation. Data and analysis is provided by the Illinois Economic Observatory / Regional Economics Applications Laboratory, University of Illinois. The MSA data (unless noted) were seasonally adjusted to be consistent with state totals.

Talking Points

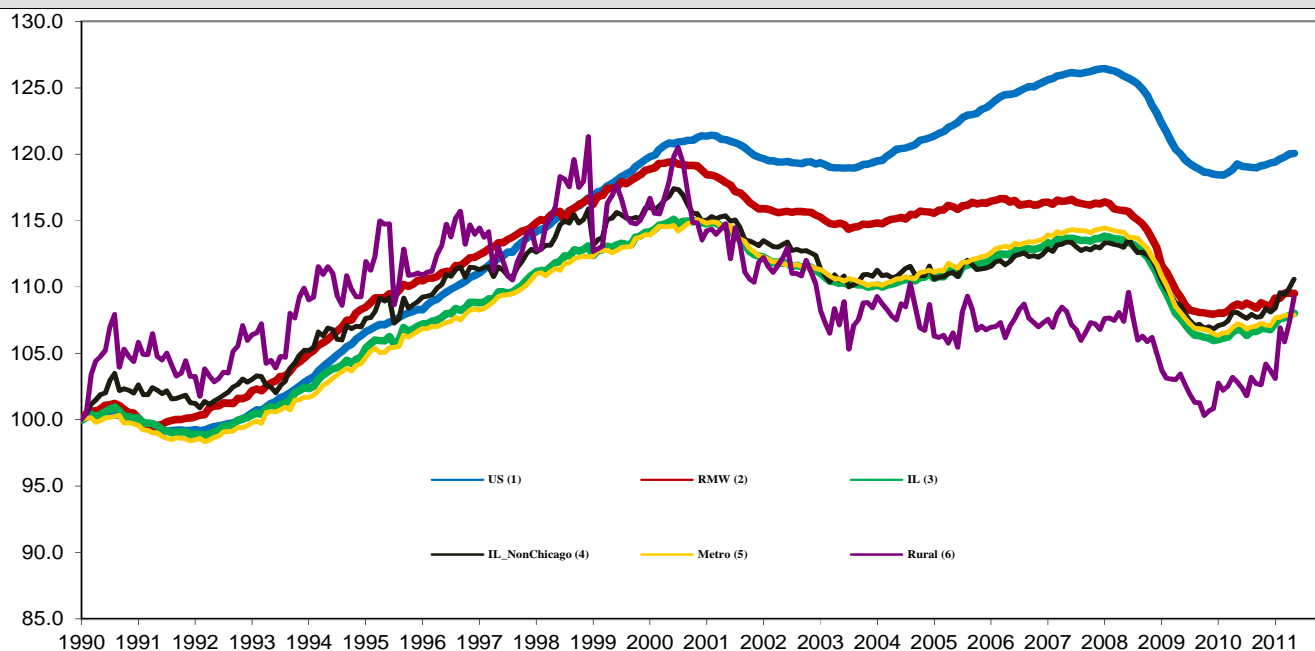
State, Downstate & Metro

- Illinois added 8,200 jobs in May 2011 at a rate of 0.14%, compared with a revised 9,100 job gain in April 2011. Compared to May 2010, Illinois has added 61,600 jobs. The three-month moving average of jobs, a more stable measure of labor market, was up by 6,600 jobs per month.
- Illinois has lost 298,400 jobs since the economic crisis developed in December 2007.
- Since January 2010 when Illinois employment resumed after the national recession, Illinois has added 107,700 new jobs.
- The major geographic divisions, Chicago-Downstate and Metro-Rural had mixed performances in May.
- Illinois Rural area added 8,900 jobs at 1.74% this month, compared to a revised -7,100 job loss in April. At the same time, Metro shed 700 jobs at -0.01%, compared to a revised 2,000 job gain in the previous month.
- Chicago shed 1,900 jobs at -0.05% in May 2011, compared to a revised 2,000 job gain last month. On the other hand, Downstate added 10,100 jobs at 0.61%, compared to a revised 7,000 job gains in April.
- In terms of the 12-month aggregated account, Metro registered a positive 0.61% growth by adding 31,200 jobs whereas Rural added 30,400 jobs at 6.21%. Chicago added 23,600 jobs at 0.59% whereas Downstate added 38,000 jobs at 2.33%.
- Through May 2011, the cumulative job growth for Metro, Rural, Chicago and Downstate compared to January 1990 stood at 7.88%, 9.21 %, 6.97% and 10.58%, respectively.

MSA page (2-4)

- Illinois Metro shed 700 jobs in May of 2011. Four out of the ten MSAs posted positive growth in May.
- In terms of growth performance, five MSAs posted a net improvement from April to May, three declined in terms of rank.
- Decatur dropped to the last place in terms of monthly growth performance, while Kankakee remained in the first place.
- Over the last 12-month period, Kankakee raised to the first place while Champaign-Urbana-Rantoul remained in the last place for three consecutive months.

Total non-farm Employment growth Jan 1990 –May 2011



Talking Points

State, Downstate & Metro

- While the average growth for Illinois between 1990 and 2008 was 0.04%, the average from December 2007 to May 2011 is -0.12%. It is worse than the performance during the 2000-2001 downturns which was -0.07%.
- Since the economic crisis in December 2007, the average growth for Metro is -0.14 while for Rural it is 0.05%. The same rate for Downstate is -0.05% while for Upstate it is -0.15%.
- Over the last 12-month period, the average growth rate for Metro was 0.05% and for Rural it was 0.51%.
- Illinois performed worse than the RMW and the nation in terms of yearly aggregated trend in 2009. In 2010, Illinois's performance is better than the RMW and compared favorably to the nation. So far in 2011, Illinois performed better than the nation and the RMW. From Jan to May 2011, the average growth rate for Illinois is 0.23% while for the RMW is 0.19% and for the nation is 0.12%.
- Downstate registered a 0.45% average growth rate in 2011 compared to an average gain of 0.10% growth in 2007, -0.17% decline in 2008, -0.32% decline in 2009 and 0.09% growth in 2010.

By MSA

Market Area	May 2011 Number of Jobs	Apr 2011 – May 2011			Last 12 months	
		Growth compared to Illinois	Growth Rate %	Number Of Jobs	Growth Rate %	Number of Jobs
Bloomington-Normal (B-N)	91,082	-	-0.31	-300	-0.06	-100
Champaign-Urbana (C-U-R)	107,080	-	-0.28	-300	-2.87	-3,200
Chicago	4,019,400	-	-0.05	-1,900	0.59	23,600
Davenport-Rock Island-Moline (D-R-M)	181,300	+	0.35	600	1.50	2,700
Decatur	51,800	-	-0.82	-400	-1.63	-900
Kankakee	45,000	+	2.34	1,000	4.88	2,100
Peoria	182,700	-	0.50	900	3.05	5,400
Rockford	145,000	-	-0.27	-400	0.24	300
Springfield	111,500	-	-0.15	-200	0.13	100
Metro-East	233,000	-	0.09	200	0.41	900
Illinois			0.14	8,200	1.09	61,600

MSA League Tables*: Non-farm Employment Growth Rate

Monthly growth:

Rank	Apr 2011	May 2011	Rank	Change**
1	Kankakee(1.61%)	Kankakee(2.34%)	1	◀(+0)
2	Peoria (0.54%)	Peoria(0.5%)	2	◀(+0)
3	Bloomington-Normal (0.38%)	Davenport-Rock Island-Moline (0.35%)	3	▲(+1)
4	Davenport-Rock Island-Moline (0.35%)	Metro-East (0.09%)	4	▲(+3)
5	Rockford (0.31%)	Chicago (-0.05%)	5	▲(+1)
6	Chicago (0.05%)	Springfield (-0.15%)	6	▲(+2)
7	Metro-East (-0.33%)	Rockford (-0.27%)	7	▼(-2)
8	Springfield (-0.49%)	Champaign-Urbana-Rantoul (-0.28%)	8	▲(+2)
9	Decatur(-0.79%)	Bloomington-Normal (-0.31%)	9	▼(-6)
10	Champaign-Urbana-Rantoul (-1.21%)	Decatur (-0.82%)	10	▼(-1)

Growth over last 12-months:

Rank	Apr 2011	May 2011	Rank	Change**
1	Peoria (2.99%)	Kankakee (4.88%)	1	▲(+1)
2	Kankakee (2.6%)	Peoria (3.05%)	2	▼(-1)
3	Rockford (1.25%)	Davenport-Rock Island-Moline (1.5%)	3	▲(+1)
4	Davenport-Rock Island-Moline (0.98%)	Chicago (0.59%)	4	▲(+1)
5	Chicago (0.96%)	Metro-East (0.41%)	5	▲(+1)
6	Metro-East (0.32%)	Rockford (0.24%)	6	▼(-3)
7	Springfield (0.22%)	Springfield (0.13%)	7	◀(+0)
8	Decatur (0.04%)	Bloomington-Normal (-0.06%)	8	▲(+1)
9	Bloomington-Normal (-0.19%)	Decatur (-1.63%)	9	▼(-1)
10	Champaign-Urbana-Rantoul (-2.56%)	Champaign-Urbana-Rantoul (-2.87%)	10	◀(+0)

Talking Points

MSA League Tables

- Bloomington-Normal experienced the deepest fall this month (3rd to 9th).
- Rockford (5th to 7th) and Decatur (9th to 10th) also dropped in terms of rank from last month.
- The most remarkable upward move in May was recorded for Metro-East (7th to 4th).
- Champaign-Urbana-Rantoul (10th to 8th), Springfield (8th to 6th), Chicago (6th to 5th), Metro-East (7th to 4th) and Davenport-Rock Island-Moline (4th to 3rd) also gained in terms of rank from last month.
- In the 12 months growth league table, upward moves were recorded for Kankakee (2nd to 1th), Davenport-Rock Island-Moline (4th to 3rd), Chicago (5th to 4th), Metro-East (6th to 5th) and Bloomington-Normal (9th to 8th) while downward moves were recorded for Decatur (8th to 9th), Rockford (3rd to 6th) and Peoria (1st to 2nd).
- Champaign-Urbana-Rantoul stayed in the last place for three consecutive months.

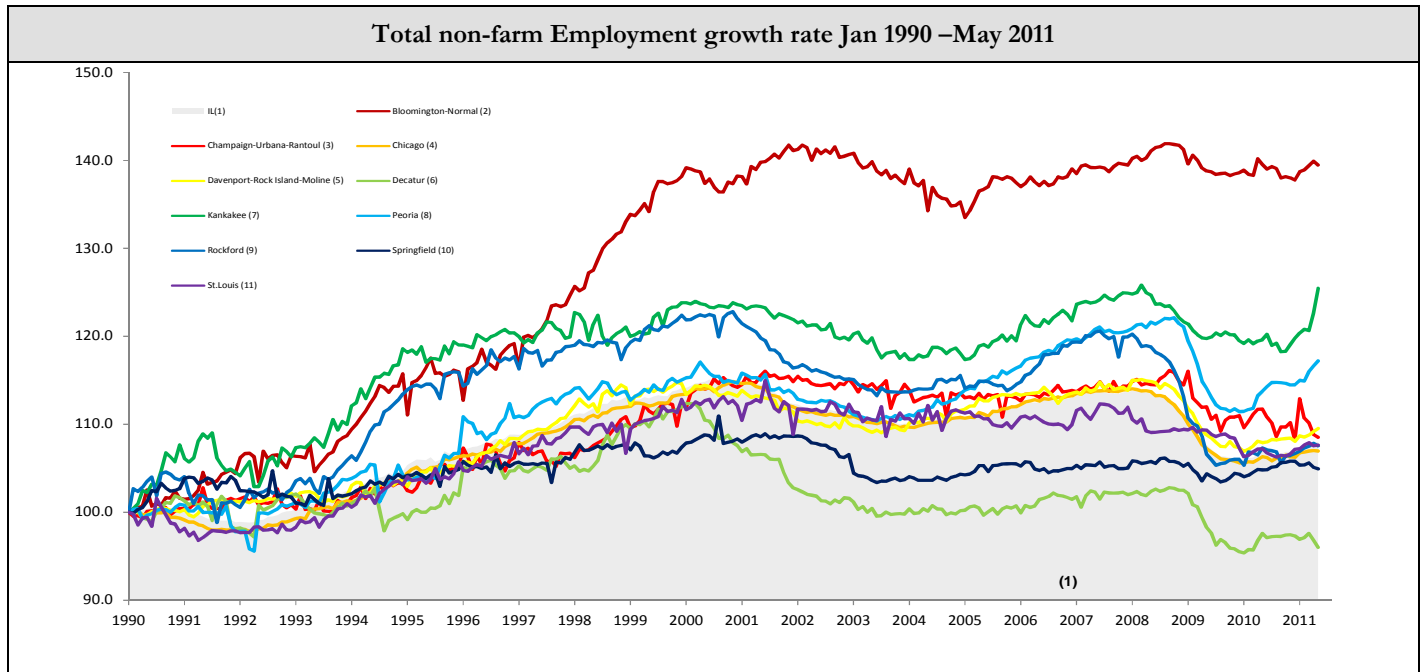
*MSA League Tables are based on revised employment data. For instances of equal growth rate for multiple MSAs ranks are decided based on change of growth rate from previous month.

**Changes indicate change in rank position compared to previous month and correspond to the MSA at the right column. Rise is indicated by a '▲' and decline by a '▼' and for an unchanged position a '◀' is used. Figures in parenthesis indicate relative rank change from previous month.

Shaded area on above chart represents Illinois growth.

May 2011 MSA Employment by Sectors (000s) *										
Market Area	Construction	Manufacturing	Trade, transportation & utilities	Information	Financial activities	Professional & business services	Education & health	Leisure & hospitality	Other Services	Government
Bloomington-Normal	2.55 (2.8%)	4.02 (4.4%)	13.55 (14.9%)	0.80 (0.9%)	11.95 (13.1%)	17.82 (19.6%)	11.47 (12.6%)	9.51 (10.4%)	3.40 (3.7%)	15.89 (17.4%)
Champaign-Urbana	3.43 (3.2%)	7.93 (7.4%)	17.57 (16.4%)	2.28 (2.1%)	4.28 (4.0%)	7.63 (7.1%)	12.86 (12%)	10.04 (9.4%)	3.23 (3.0%)	37.97 (35.5%)
Chicago	139.99 (3.5%)	378.37 (9.4%)	816.51 (20.3%)	74.14 (1.8%)	275.92 (6.9%)	669.16 (16.6%)	598.71 (14.9%)	364.05 (9.1%)	180.73 (4.5%)	521.23 (13%)
Davenport-Rock Island-Moline	0.91 (3.1%)	5.02 (17.3%)	6.54 (22.5%)	0.31 (1.1%)	1.30 (4.5%)	2.12 (7.3%)	3.15 (10.9%)	2.14 (7.4%)	1.32 (4.5%)	6.29 (21.7%)
Decatur	8.75 (4.8%)	24.46 (13.5%)	36.98 (20.4%)	2.71 (1.5%)	8.30 (4.6%)	21.19 (11.7%)	25.6 (14.1%)	18.44 (10.2%)	7.39 (4.1%)	27.64 (15.2%)
Kankakee	3.70 (7.1%)	10.81 (20.9%)	10.52 (20.3%)	0.70 (1.4%)	1.91 (3.7%)	3.45 (6.7%)	7.73 (14.9%)	4.49 (8.7%)	2.43 (4.7%)	5.91 (11.4%)
Peoria	1.35 (3.0%)	4.72 (10.5%)	10.91 (24.3%)	0.50 (1.1%)	1.89 (4.2%)	3.09 (6.9%)	9.24 (20.6%)	4.21 (9.4%)	1.94 (4.3%)	7.09 (15.8%)
Rockford	8.57 (4.7%)	28.26 (15.5%)	33.89 (18.5%)	2.39 (1.3%)	7.90 (4.3%)	23.77 (13%)	32.27 (17.7%)	16.53 (9%)	8.00 (4.4%)	21.28 (11.6%)
Springfield	5.29 (3.7%)	27.88 (19.2%)	27.97 (19.3%)	1.64 (1.1%)	5.69 (3.9%)	15.07 (10.4%)	22.73 (15.7%)	12.03 (8.3%)	8.69 (6.0%)	17.70 (12.2%)
IL	205.92 (3.6%)	573.45 (10.1%)	1145.3 (20.2%)	96.70 (1.7%)	355.69 (6.3%)	821.27 (14.5%)	852.03 (15%)	517.51 (9.1%)	258.19 (4.5%)	847.30 (14.9%)

* The Illinois Department of Employment Security does not collect sector employment data for Metro-East



MSA DESCRIPTION: **Bloomington-Normal (B-N):** McLean Co.**Champaign-Urbana (C-U-R):** Champaign Co., Ford Co. & Piatt Co. **Chicago:** Cook Co. IL, DeKalb Co. IL, DuPage Co. IL, Grundy Co. IL, Kane Co. IL, Kendall Co. IL, Lake Co. IL, McHenry Co. IL, Will Co. IL & Kenosha Co. WI **Davenport-Moline-Rock Island (D-R-M):** Henry Co. IL, Mercer Co. IL, Rock Island Co. IL & Scott Co. IA **Decatur:** Macon Co.**Kankakee:** Kankakee Co. **Metro-East:** Bond Co., Calhoun Co., Clinton Co., Jersey Co., Macoupin Co., Madison Co., Monroe Co. & St. Clair Co. **Peoria-Pekin (Peoria):** Marshall Co., Peoria Co., Stark Co., Tazewell Co. & Woodford Co.**Rockford:** Boone Co. & Winnebago Co. **Springfield:** Menard Co. & Sangamon Co. The MSA data (unless noted) were seasonally adjusted to be consistent with state totals.

The Illinois Economic Observatory and Illinois Jobs Index is part of the Institute of Government and Public Affairs at the University of Illinois.