

Illinois Job Index:

MSA Report

Release 06/6/2011	data Jan 1990 / Apr 2011	Issue 14.05	www.real.illinois.edu
-----------------------------	------------------------------------	-----------------------	------------------------------

Note: IDES revised their estimates for the number of jobs at the beginning of 2011.

As a companion to the Feb 2011 Illinois Job Index that reports a positive rating, this MSA Report provides a localized picture on Illinois job growth and allows for comparisons between local economies, Illinois, the Nation and the Rest of the Midwest.

May 2011	Total non-farm employment	Apr 2011 Number of Jobs	Mar 2011 – Apr 2011		Last 12 months	
			Growth Rate (%)	Number of Jobs	Growth Rate (%)	Number of Jobs
	Nation	131,028,000	0.19	244,000	1.01	1,313,000
	Rest of Midwest (RMW)	18,716,800	0.01	1,400	0.94	174,700
	Illinois	5,680,800	0.17	9,900	1.19	66,600
	Illinois Metro	5,173,500	0.09	4,700	0.97	49,700
	Illinois non-Metro (Rural)	507,300	1.04	5,200	3.45	17,000
	Illinois Chicago (Upstate)	4,025,000	0.10	4,200	1.02	40,800
	Illinois non-Chicago	1,655,800	0.35	5,700	1.58	25,800

The monthly Illinois Job Index and MSA Report are provided as tools for elected officials, policy leaders and the public. We can better understand the Illinois economy and business climate by comparing and measuring Illinois employment growth rates against those of the Rest of the Midwest (RMW: Indiana, Iowa, Michigan, Missouri, Ohio and Wisconsin) and the Nation. Data and analysis is provided by the Illinois Economic Observatory / Regional Economics Applications Laboratory, University of Illinois. The MSA data (unless noted) were seasonally adjusted to be consistent with state totals.

Talking Points

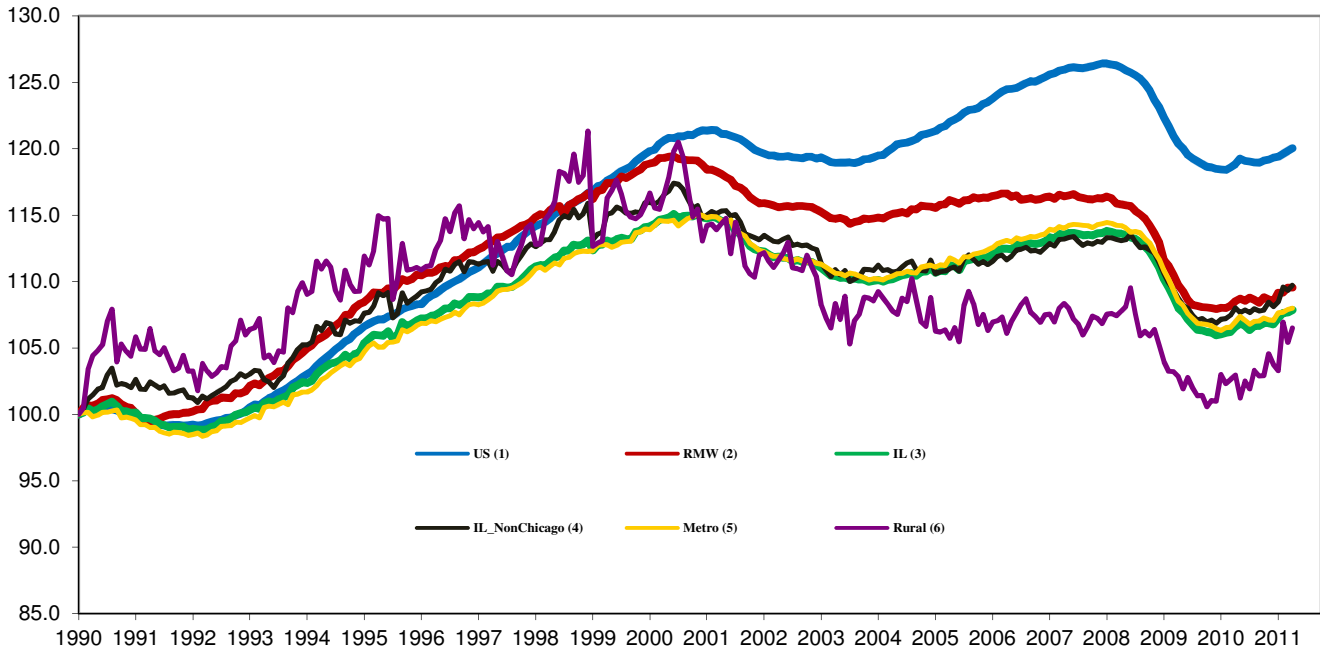
State, Downstate & Metro

- Illinois added 9,900 jobs in April 2011 at a rate of 0.17%, compared with a revised 2,600 job gain in March 2011. Compared to April 2010, Illinois has added 66,600 jobs. The three-month moving average of jobs, a more stable measure of labor market, was up by 10,900 jobs per month.
- Illinois has lost 304,400 jobs since the economic crisis developed in December, 2007.
- Since January 2010 when Illinois employment resumed after the national recession, Illinois has added 100,300 new jobs.
- The major geographic divisions, Chicago-Downstate and Metro-Rural both had positive performances in April.
- Illinois Rural area added 5,200 jobs at 1.04% this month, compared to a revised -7,300 job loss in March. At the same time, Metro added 4,700 jobs at 0.09%, compared to a revised 9,900 job gain in the previous month.
- Chicago added 4,200 jobs at 0.10% in April 2011, compared to a revised 6,100 job gain last month. On the other hand, Downstate added 5,700 jobs at 0.35%, compared to a revised -3,500 job loss in March.
- In terms of the 12-month aggregated account, Metro registered a positive 0.97% growth by adding 49,700 jobs whereas Rural added 17,000 jobs at 3.45%. Chicago added 40,800 jobs at 1.02% whereas Downstate added 25,800 jobs at 1.58%.
- Through April 2011, the cumulative job growth for Metro, Rural, Chicago and Downstate compared to January 1990 stood at 7.77%, 8.39 %, 6.96% and 9.53%, respectively.

MSA page (2-4)

- Illinois Metro added 4,700 jobs in April of 2011. Four out of the ten MSAs posted negative growth in April.
- In terms of growth performance, five MSAs posted a net improvement from March to April, five declined in terms of rank.
- Metro-East dropped to the last place in terms of monthly growth performance, while Bloomington-Normal climbed up to the first place.
- Over the last 12-month period, Peoria stayed in the first place while Champaign-Urbana-Rantoul remained in the last place.

Total non-farm Employment growth Jan 1990 – Apr 2011



Talking Points

State, Downstate & Metro

- While the average growth for Illinois between 1990 and 2008 was 0.04%, the average from December 2007 to Apr 2011 is -0.13%. It is worse than the performance during the 2000-2001 downturns which was -0.07%.
- Since the economic crisis in December, 2007, the average growth for Metro is -0.14 while for Rural it is -0.01%. The same rate for Downstate is -0.07% while for Upstate it is -0.15%.
- Over the last 12-month period, the average growth rate for Metro was 0.08% and for Rural it was 0.29%.
- Illinois performed worse than the RMW and the nation in terms of yearly aggregated trend in 2009. In 2010, Illinois's performance is better than the RMW and compared favorably to the nation. So far in 2011, Illinois performed better than the nation and the RMW.
- Downstate registered a 0.37% average growth rate in 2011 compared to an average gain of 0.10% growth in 2007, -0.17% decline in 2008, -0.32% decline in 2009 and 0.09% growth in 2010.

By MSA

Market Area	Apr 2011 Number of Jobs	Mar 2011 –Apr 2011			Last 12 months	
		Growth compared to Illinois	Growth Rate %	Number Of Jobs	Growth Rate %	Number of Jobs
Bloomington-Normal (B-N)	91,600	+	0.42	382	0.04	35
Champaign-Urbana (C-U-R)	107,300	-	-1.35	-1,500	-2.57	-2,800
Chicago	4,025,000	-	0.10	4,200	1.02	40,800
Davenport-Rock Island-Moline (D-R-M)	180,900	+	0.31	600	1.10	2,000
Decatur	52,300	-	-0.86	-500	0.04	20
Kankakee	43,800	+	1.92	800	2.15	900
Peoria	182,500	-	0.80	1,400	3.33	5,900
Rockford	145,700	+	0.33	500	1.34	1,900
Springfield	111,600	-	-0.48	-500	0.14	200
Metro-East	232,800	-	-0.30	-700	0.33	800
Illinois			0.17	9,900	1.19	66,600

MSA League Tables*: Non-farm Employment Growth Rate

Monthly growth:

Rank	Mar 2011	Apr 2011	Rank	Change**
1	Peoria(1.07%)	Bloomington-Normal(0.42%)	1	↑(+2)
2	Decatur (0.54%)	Champaign-Urbana-Rantoul(-1.35%)	2	↑(+7)
3	Bloomington-Normal (0.54%)	Chicago (0.1%)	3	↑(+4)
4	Rockford (0.4%)	Davenport-Rock Island-Moline (0.31%)	4	↑(+1)
5	Davenport-Rock Island-Moline (0.32%)	Decatur (-0.86%)	5	↓(-3)
6	Metro-East (0.24%)	Kankakee (1.92%)	6	↑(+4)
7	Chicago (0.15%)	Peoria (0.8%)	7	↓(-6)
8	Springfield (0.15%)	Rockford (0.33%)	8	↓(-4)
9	Champaign-Urbana-Rantoul(-0.42%)	Springfield (-0.48%)	9	↓(-1)
10	Kankakee (-0.69%)	Metro-East (-0.3%)	10	↓(-4)

Growth over last 12-months:

Rank	Mar 2011	Apr 2011	Rank	Change**
1	Peoria (3.88%)	Peoria (3.33%)	1	↔(+0)
2	Decatur (2.15%)	Kankakee (2.15%)	2	↑(+7)
3	Davenport-Rock Island-Moline (1.33%)	Rockford (1.34%)	3	↑(+5)
4	Chicago (1.24%)	Davenport-Rock Island-Moline (1.1%)	4	↓(-1)
5	Bloomington-Normal (1.01%)	Chicago (1.02%)	5	↓(-1)
6	Metro-East (0.97%)	Metro-East (0.33%)	6	↔(+0)
7	Springfield (0.95%)	Springfield (0.14%)	7	↔(+0)
8	Rockford (0.82%)	Bloomington-Normal (0.04%)	8	↓(-3)
9	Kankakee (0.56%)	Decatur (0.04%)	9	↓(-7)
10	Champaign-Urbana-Rantoul (-0.86%)	Champaign-Urbana-Rantoul (-2.57%)	10	↔(+0)

Talking Points

MSA League Tables

- Peoria experienced the deepest fall this month.
- Metro-East (6th to 10th), Rockford (4th to 8th), Decatur (2nd to 5th) and Springfield (8th to 9th) also dropped in terms of rank from last month.
- The most remarkable upward move in April was recorded for Champaign-Urbana-Rantoul (9th to 2nd).
- Bloomington-Normal (3rd to 1st), Chicago (7th to 3rd), Davenport-Rock Island-Moline (5th to 4th) and Kankakee (10th to 6th) also gained in terms of rank from last month.
- In the 12 months growth league table, upward moves were recorded for Kankakee (9th to 2nd) and Rockford(8th to 3rd) while downward moves were recorded for Bloomington-Normal (5th to 3rd), Decatur (2nd to 9th) and Chicago (4th to 5th), Davenport-Rock Island-Moline (3rd to 4th).
- Peoria remained in the first place while Champaign-Urbana-Rantoul stayed in the last place.

*MSA League Tables are based on revised employment data. For instances of equal growth rate for multiple MSAs ranks are decided based on change of growth rate from previous month.

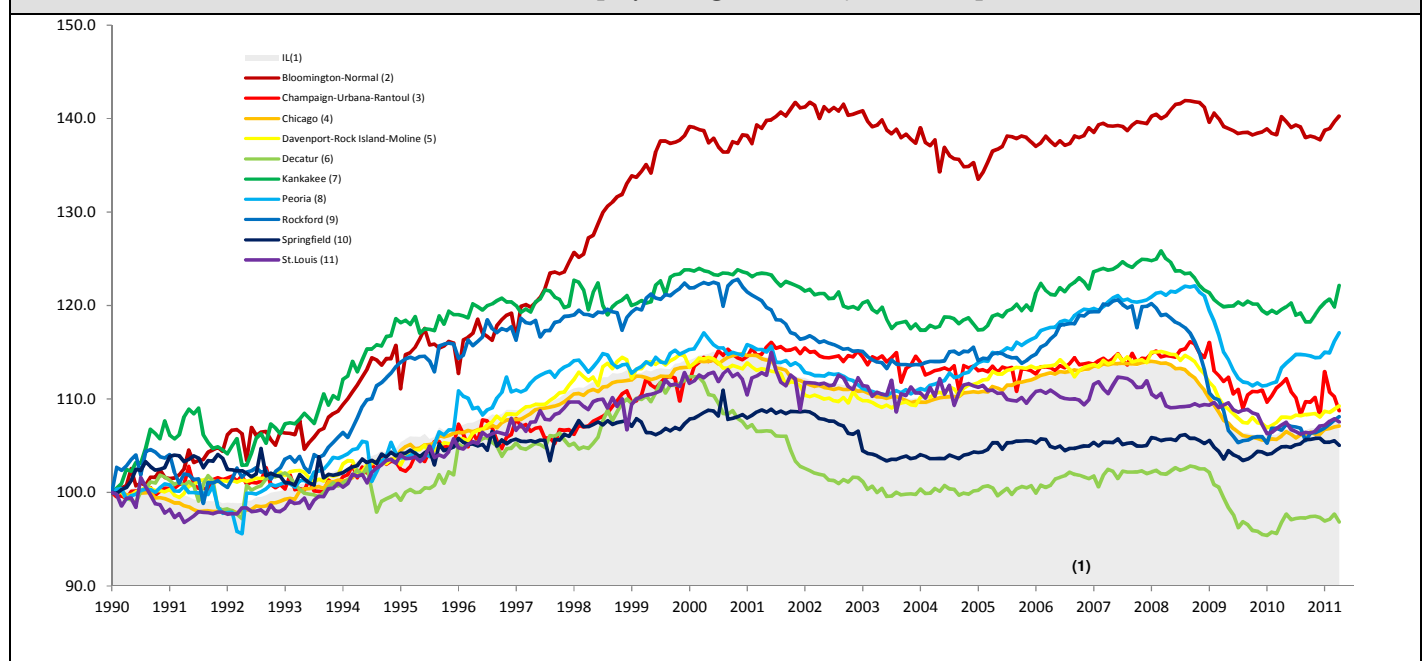
**Changes indicate change in rank position compared to previous month and correspond to the MSA at the right column. Rise is indicated by a '↑' and decline by a '↓' and for an unchanged position a '↔' is used. Figures in parenthesis indicate relative rank change from previous month. Shaded area on above chart represents Illinois growth.

Apr 2011 MSA Employment by Sectors (000s) *

Market Area	Construction	Manufacturing	Trade, transportation & utilities	Information	Financial activities	Professional & business services	Education & health	Leisure & hospitality	Other Services	Government
Bloomington-Normal	2.61 (2.8%)	4.02 (4.4%)	13.76 (15%)	0.80 (0.9%)	12.05 (13.2%)	17.98 (19.6%)	11.47 (12.5%)	9.42 (10.3%)	3.42 (3.7%)	15.81 (17.3%)
Champaign-Urbana	3.53 (3.3%)	7.92 (7.4%)	17.63 (16.4%)	2.26 (2.1%)	4.32 (4.0%)	7.59 (7.1%)	13.00 (12.1%)	9.91 (9.2%)	3.19 (3.0%)	37.94 (35.4%)
Chicago	138.17 (3.4%)	375.77 (9.3%)	817.67 (20.3%)	74.84 (1.9%)	276.65 (6.9%)	669.01 (16.6%)	598.09 (14.9%)	367.37 (9.1%)	182.26 (4.5%)	522.1 (13%)
Davenport-Rock Island-Moline	0.82 (2.8%)	4.94 (17.1%)	6.57 (22.7%)	0.30 (1.0%)	1.30 (4.5%)	2.06 (7.1%)	3.14 (10.9%)	2.18 (7.5%)	1.32 (4.6%)	6.28 (21.7%)
Decatur	8.66 (4.8%)	24.11 (13.3%)	36.96 (20.4%)	2.69 (1.5%)	8.26 (4.6%)	21.15 (11.7%)	25.59 (14.1%)	18.19 (10.1%)	7.44 (4.1%)	27.82 (15.4%)
Kankakee	3.68 (7.0%)	10.71 (20.5%)	10.79 (20.6%)	0.71 (1.4%)	2.04 (3.9%)	3.51 (6.7%)	7.94 (15.2%)	4.59 (8.8%)	2.52 (4.8%)	5.96 (11.4%)
Peoria	1.35 (3.1%)	4.74 (10.8%)	10.42 (23.8%)	0.51 (1.2%)	1.90 (4.3%)	2.95 (6.7%)	8.94 (20.4%)	4.01 (9.1%)	1.83 (4.2%)	7.07 (16.2%)
Rockford	8.63 (4.7%)	27.89 (15.3%)	34.19 (18.7%)	2.42 (1.3%)	7.87 (4.3%)	23.3 (12.8%)	32.27 (17.7%)	16.55 (9.1%)	7.93 (4.3%)	21.45 (11.8%)
Springfield	5.32 (3.6%)	27.41 (18.8%)	28.36 (19.5%)	1.66 (1.1%)	5.73 (3.9%)	15.13 (10.4%)	23.15 (15.9%)	12.27 (8.4%)	8.91 (6.1%)	17.54 (12%)
IL	202.15 (3.6%)	568.24 (10%)	1144.56 (20.2%)	96.59 (1.7%)	354.99 (6.3%)	819.2 (14.4%)	851.39 (15%)	519.98 (9.2%)	259.85 (4.6%)	850.52 (15%)

* The Illinois Department of Employment Security does not collect sector employment data for Metro-East

Total non-farm Employment growth rate Jan 1990 –Apr 2011



MSA DESCRIPTION: **Bloomington-Normal (B-N):** McLean Co. **Champaign-Urbana (C-U-R):** Champaign Co., Ford Co. & Piatt Co. **Chicago:** Cook Co. IL, DeKalb Co. IL, DuPage Co. IL, Grundy Co. IL, Kane Co. IL, Kendall Co. IL, Lake Co. IL, McHenry Co. IL, Will Co. IL & Kenosha Co. WI **Davenport-Moline-Rock Island (D-R-M):** Henry Co. IL, Mercer Co. IL, Rock Island Co. IL & Scott Co. IA **Decatur:** Macon Co. **Kankakee:** Kankakee Co. **Metro-East:** Bond Co., Calhoun Co., Clinton Co., Jersey Co., Macoupin Co., Madison Co., Monroe Co. & St. Clair Co. **Peoria-Pekin (Peoria):** Marshall Co., Peoria Co., Stark Co., Tazewell Co. & Woodford Co. **Rockford:** Boone Co. & Winnebago Co. **Springfield:** Menard Co. & Sangamon Co. The MSA data (unless noted) were seasonally adjusted to be consistent with state totals.

