

Illinois Job Index:

MSA Report

Release Feb29/2015	data Jan 1990 / January 2015	Issue 15.2	www.real.illinois.edu
-----------------------	---------------------------------	---------------	-----------------------

Note: IDES revised their estimates for the number of jobs at the beginning of 2015.

As a companion to the Sep 2014 Illinois Job Index that reports an positive rating, this MSA Report provides a localized picture on Illinois job growth and allows for comparisons between local economies, Illinois, the Nation and the Rest of the Midwest.

Feb 2015	Total non-farm employment	January 2015 Number of Jobs	Dec 2014 – Jan 2015		Last 12 months	
			Growth Rate (%)	Number of Jobs	Growth Rate (%)	Number of Jobs
	Nation	140,831,000	0.17	239,000	2.32	3,189,000
	Rest of Midwest (RMW)	19,848,100	0.37	72,800	1.92	373,100
	Illinois	5,899,900	-0.12	-7,100	1.11	65,000
	Illinois Metro	5,165,000	0.20	10,500	1.29	65,700
	Illinois non-Metro (Rural)	734,900	-2.34	-17,600	-0.10	-700
	Illinois Chicago (Upstate)	4,011,600	0.20	7,800	1.53	60,300
	Illinois non-Chicago	1,888,300	-0.78	-14,900	0.25	4,700

The monthly Illinois Job Index and MSA Report are provided as tools for elected officials, policy leaders and the public. Understanding the Illinois economy and business climate is enhanced by comparing and measuring Illinois employment growth rates against those of the Rest of the Midwest (RMW: Indiana, Iowa, Michigan, Missouri, Ohio and Wisconsin) and the Nation. Data and analysis are provided by the Illinois Economic Observatory / Regional Economics Applications Laboratory, University of Illinois. The MSA data (unless noted) were seasonally adjusted to be consistent with state totals.

Talking Points

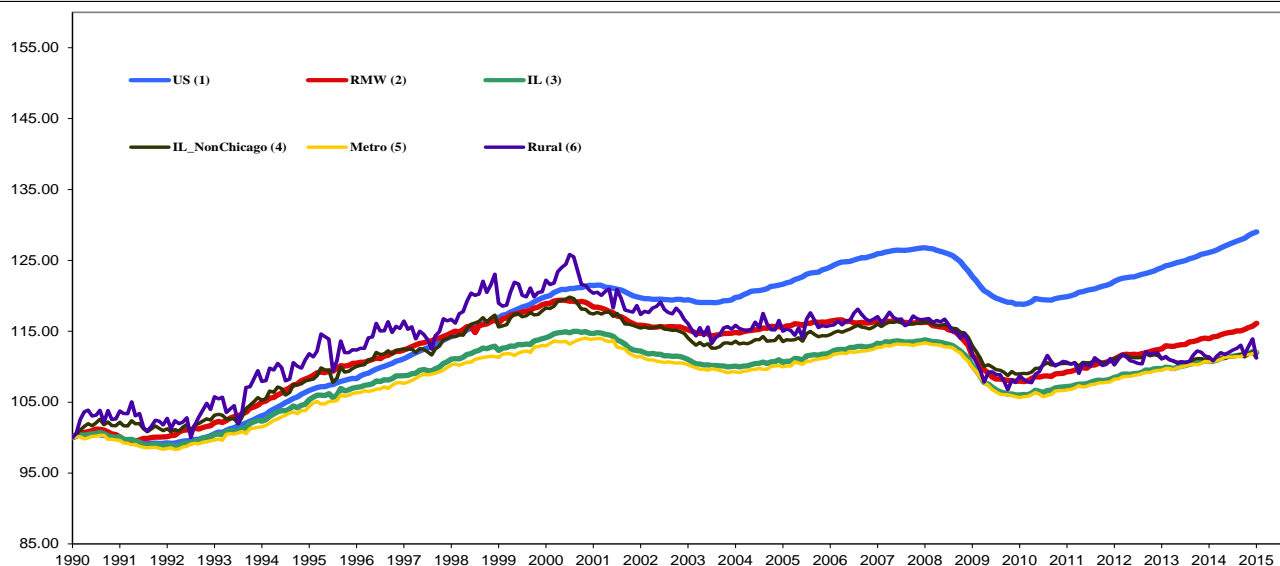
State, Downstate & Metro

- Illinois shed 7,100 jobs in January 2015, compared with a job gain of 15,500 in December 2014. Compared to January 2014, Illinois has added 65,000 jobs. The three-month moving average of jobs, a more stable measure of the labor market, was up by 4,300 jobs per month.
- Illinois has a net loss of 88,000 jobs since the economic crisis developed in December 2007.
- Since January 2010 when Illinois employment resumed after the national recession, Illinois has added 315,000 new jobs.
- The major geographic divisions, Chicago-Downstate and Metro-Rural had mixed performances.
- Illinois Rural area shed 17,600 jobs at -2.34% this month, compared to a revised 7,000 job gain in December 2014. At the same time, Metro added 10,500 jobs at 0.20% this month, compared to a revised 8,500 job gain in the previous month.
- Chicago added 7,800 jobs at 0.20% in January 2015, compared to a revised 9,400 job gain last month. Meanwhile, Downstate shed 14,900 jobs at -0.78%, compared to a revised 6,100 job gain last month.
- In terms of the 12-month aggregated account, Metro registered a positive 1.29 % growth by adding 65,700 jobs whereas Rural shed 700 jobs at -0.10 %. Chicago added 60,300 jobs at 1.53% whereas Downstate added 4,700 jobs at 0.25%.
- Through January 2015, the cumulative job growth for Metro, Rural, Chicago and Downstate compared to January 1990 stood at 12.09%, 11.28%, 12.35% and 11.23% respectively.

MSA page (2-4)

- Illinois Metro added 10,500 jobs at 0.20% in January 2015. Six out of ten MSAs posted positive growth.
- Since the job recovery resumed in Jan 2010 in Illinois, Chicago Upstate has shown an average growth rate of 11.02%, which is the highest among all the IL MSAs; Bloomington-Normal has experienced the lowest average growth rate, -3.44%.
- In terms of growth performance, three MSAs posted net improvements from December to January, six declined in terms of rank, and one remained in the same place.
- Kankakee dropped to the last place in terms of monthly growth performance, while Peoria climbed to the first place.
- Over the last 12-month period, Champaign-Urbana-Rantoul remained in the first place while Decatur dropped to the last place.

Total non-farm Employment growth Jan 1990 – January 2015



Talking Points

State, Downstate & Metro

- While the average growth for Illinois between 1990 and 2008 was 0.04%, the average from December 2007 to January 2015 was -0.02%. This is better than the performance during the 2000-2001 downturns which saw declines of -0.09%.
- Since the economic crisis in December 2007, the average growth for Metro is -0.01% while for Rural it is -0.05%. The same rate for Chicago (Upstate) is 0.00% and for Downstate it is -0.05%.
- Over the last 12-month period, the average growth rate for Metro was 0.11% and for Rural it was 0.00%.
- Downstate registered a 0.08% average job gain in 2014 compared to an average gain of 0.04% in 2007, -0.11% decline in 2008, -0.35% decline in 2009, 0.13% growth in 2010, 0.01% growth in 2011, 0.11% growth in 2012 and -0.03% decline in 2013.

Average Growth Rates for Illinois, RMW and the Nation

	2011(%)	2012(%)	2013(%)	2014(%)	2015(%)
Illinois	0.08	0.12	0.07	0.09	-0.12
RMW	0.13	0.12	0.12	0.12	0.37
Nation	0.13	0.14	0.14	0.19	0.17

By MSA

Market Area	Jan 2015 Number of Jobs	December 2014 – January 2015			Last 12 months	
		Growth compared to Illinois	Growth Rate %	Number Of Jobs	Growth Rate %	Number of Jobs
Bloomington-Normal (B-N)	94,200	+	0.25	200	-1.05	-1,00
Champaign-Urbana (C-U-R)	107,900	+	0.34	400	1.95	2,100
Chicago	4,011,600	+	0.20	7,800	1.53	60,300
Davenport-Rock Island-Moline (D-R-M)	184,700	+	0.60	1,100	0.56	1,000
Decatur	50,700	-	-0.68	-300	-1.20	-600
Kankakee	44,500	-	-0.99	-400	0.43	200
Peoria	179,400	+	0.85	1,500	0.58	1,000
Rockford	151,200	+	-0.05	-100	1.63	2,400
Springfield	112,100	+	-0.09	-100	0.52	600
Metro-East	229,300	+	0.18	400	-0.14	-300
Illinois			-0.12	-7,100	1.11	65,000

MSA League Tables*: Non-farm Employment Growth Rate

Monthly growth:

Rank	December 2014	January 2015	Rank	Change**
1	Champaign-Urbana-Rantoul(0.26%)	Peoria(0.85%)	1	↑(+9)
2	Decatur(0.26%)	Davenport-Rock Island-Moline(0.6%)	2	↑(+4)
3	Metro-East(0.16%)	Champaign-Urbana-Rantoul(0.34%)	3	↓(-2)
4	Chicago(0.14%)	Bloomington-Normal(0.25%)	4	↑(+4)
5	Springfield (0.11%)	Chicago(0.2%)	5	↓(-1)
6	Davenport-Rock Island-Moline(0.06%)	Metro-East(0.18%)	6	↓(-3)
7	Rockford (-0.11%)	Rockford (-0.05%)	7	←(+0)
8	Bloomington-Normal(-0.22%)	Springfield (-0.09%)	8	↓(-3)
9	Kankakee(-0.37%)	Decatur(-0.68%)	9	↓(-7)
10	Peoria(-0.73%)	Kankakee(-0.99%)	10	↓(-1)

Growth over last 12-months:

Rank	December 2014	January 2015	Rank	Change**
1	Champaign-Urbana-Rantoul (1.44%)	Champaign-Urbana-Rantoul (1.95%)	1	←(+0)
2	Chicago (0.94%)	Rockford (1.63%)	2	↑(+1)
3	Rockford (0.59%)	Chicago (1.53%)	3	↓(-1)
4	Springfield (0.09%)	Peoria (0.58%)	4	↑(+6)
5	Metro-East (0.08%)	Davenport-Rock Island-Moline (0.56%)	5	↑(+3)
6	Decatur (0.01%)	Springfield (0.52%)	6	↓(-2)
7	Kankakee (-0.46%)	Kankakee (0.43%)	7	←(+0)
8	Davenport-Rock Island-Moline (-0.7%)	Metro-East (-0.14%)	8	↓(-3)
9	Bloomington-Normal (-0.99%)	Bloomington-Normal (-1.05%)	9	←(+0)
10	Peoria (-1.03%)	Decatur (-1.2%)	10	↓(-4)

Talking Points

MSA League Tables

- Decatur (2nd to 9th) experienced the deepest fall this month.
- Champaign-Urbana-Rantoul (1st to 3rd), Chicago (4th to 5th), Metro-East (3rd to 6th), Springfield (5th to 8th) and Kankakee (9th to 10th) also dropped in terms of rank from last month.
- The most remarkable upward move in January was recorded for Peoria (10th to 1st).
- In the 12 months growth league table, upward moves were recorded for Rockford (3rd to 2nd), Peoria (10th to 4th) and Davenport-Rock Island-Moline (8th to 5th).
- Downward moves were recorded for Chicago (2nd to 3rd), Springfield (4th to 6th), Metro-East (5th to 8th) and Decatur (6th to 10th).
- In the 12 months growth league table, Decatur dropped to the last place and Champaign-Urbana-Rantoul remained in the first place.

*MSA League Tables are based on revised employment data. For instances of equal growth rate for multiple MSAs ranks are decided based on change of growth rate from previous month.

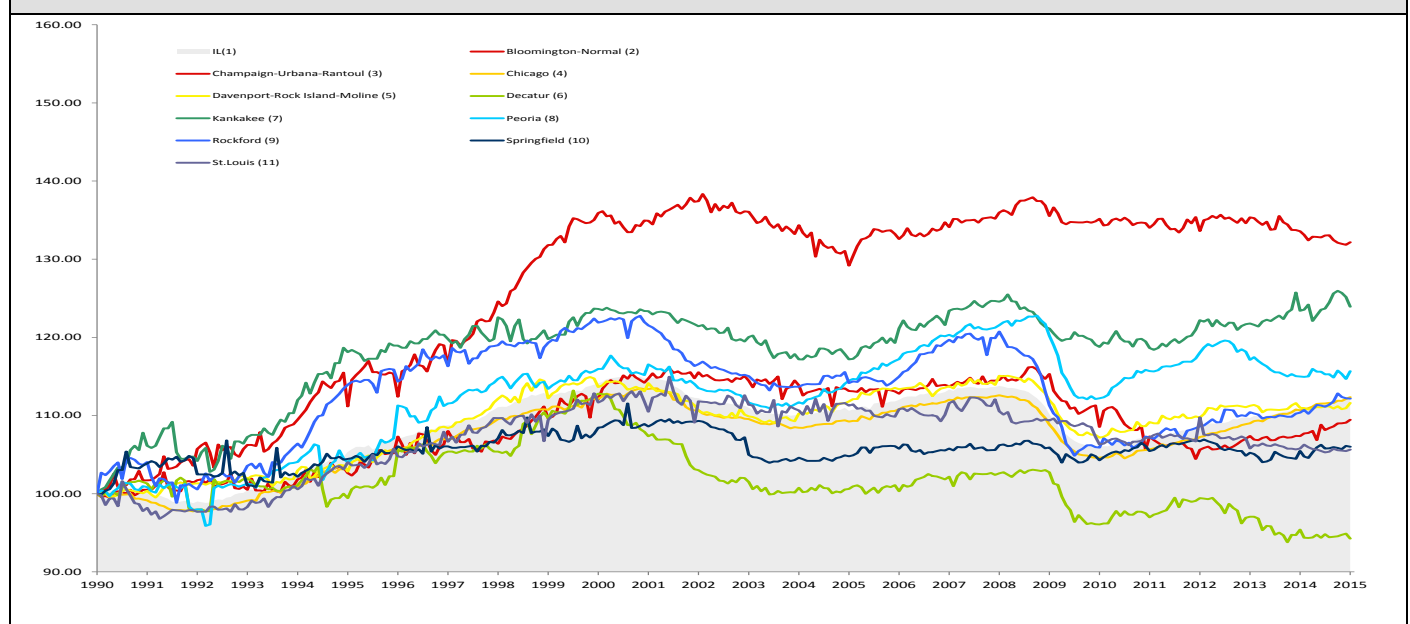
**Changes indicate change in rank position compared to previous month and correspond to the MSA at the right column. Rise is indicated by a '↑' and decline by a '↓' and for an unchanged position a '←' is used. Figures in parenthesis indicate relative rank change from previous month.

January 2015 MSA Employment by Sectors (000s) *

Market Area	Construction (CON)	Manufacturing (MAN)	Trade, transportation & utilities (TTU)	Information (INF)	Financial activities (FIN)	Professional & business services (PRO)	Education & health (EDU)	Leisure & hospitality (LEI)	Other Services (OTH)	Government (GOV)
Bloomington-Normal	2.29 (2.4%)	4.78 (5.1%)	15.59 (16.5%)	0.69 (0.7%)	12.04 (12.8%)	17.37 (18.4%)	10.71 (11.4%)	11.17 (11.9%)	3.72 (3.9%)	16.46 (17.5%)
Champaign-Urbana	3.17 (2.9%)	8.08 (7.5%)	16.82 (15.6%)	2.54 (2.4%)	4.44 (4.1%)	8.36 (7.7%)	14.33 (13.3%)	11.4 (10.6%)	3.47 (3.2%)	35.41 (32.8%)
Chicago	128.62 (3.2%)	337.22 (8.4%)	808.59 (20.2%)	75.05 (1.9%)	269.3 (6.7%)	743.57 (18.5%)	618.2 (15.4%)	382.77 (9.5%)	171.88 (4.3%)	475.65 (11.9%)
Davenport-Rock Island-Moline	9.3 (5%)	24.32 (13.2%)	39.33 (21.3%)	2.39 (1.3%)	7.96 (4.3%)	23.63 (12.8%)	26.37 (14.3%)	18.16 (9.8%)	7.32 (4%)	26.02 (14.1%)
Decatur	3.13 (6.2%)	10.03 (19.8%)	10.82 (21.3%)	0.6 (1.2%)	1.92 (3.8%)	3.04 (6%)	8.16 (16.1%)	5.07 (10%)	2.23 (4.4%)	5.45 (10.7%)
Kankakee	1.19 (2.7%)	5.8 (13%)	10.63 (23.9%)	0.41 (0.9%)	1.84 (4.1%)	3.93 (8.8%)	8.44 (19%)	3.7 (8.3%)	1.7 (3.8%)	6.71 (15.1%)
Peoria	7.68 (4.3%)	25.97 (14.5%)	32.74 (18.2%)	2.2 (1.2%)	7.66 (4.3%)	22 (12.3%)	34.14 (19%)	18.05 (10.1%)	7.83 (4.4%)	21.42 (11.9%)
Rockford	4.42 (2.9%)	32.23 (21.3%)	28.88 (19.1%)	1.41 (0.9%)	5.59 (3.7%)	16.52 (10.9%)	23.69 (15.7%)	13.27 (8.8%)	8.74 (5.8%)	16.55 (10.9%)
Springfield	4.57 (4.1%)	2.95 (2.6%)	17.79 (15.9%)	1.72 (1.5%)	7.09 (6.3%)	10.18 (9.1%)	20.25 (18.1%)	11.27 (10.1%)	6.58 (5.9%)	29.74 (26.5%)
IL	207.89 (3.5%)	578.87 (9.8%)	1179.92 (20%)	99.06 (1.7%)	368.9 (6.2%)	926.31 (15.7%)	895.13 (15.1%)	562.05 (9.5%)	252.8 (4.3%)	829.83 (14%)

*The Illinois Department of Employment Security does not collect sector employment data for Metro-East

Total non-farm Employment growth rate Jan 1990 – January 2015



MSA DESCRIPTION: **Bloomington-Normal (B-N):** McLean Co.**Champaign-Urbana (C-U-R):** Champaign Co., Ford Co. & Piatt Co. **Chicago:** Cook Co. IL, DeKalb Co. IL, DuPage Co. IL, Grundy Co. IL, Kane Co. IL, Kendall Co. IL, Lake Co. IL, McHenry Co. IL, Will Co. IL & Kenosha Co. WI **Davenport-Moline-Rock Island (D-R-M):** Henry Co. IL, Mercer Co. IL, Rock Island Co. IL & Scott Co. IA **Decatur:** Macon Co.**Kankakee:** Kankakee Co. **Metro-East:** Bond Co., Calhoun Co., Clinton Co., Jersey Co., Macoupin Co., Madison Co., Monroe Co. & St. Clair Co. **Peoria-Pekin (Peoria):** Marshall Co., Peoria Co., Stark Co., Tazewell Co. & Woodford Co.**Rockford:** Boone Co. & Winnebago Co. **Springfield:** Menard Co. & Sangamon Co. The MSA data (unless noted) were seasonally adjusted to be consistent with state totals.

Employment Forecast for MSAs

MSAs	January 2015*	January 2016 (p)*	Number of Jobs *	Growth Rate %	Growth	Sector with Highest Growth Rate (p)	Sector with Lowest Growth Rate (p)
Bloomington-Normal	94,200	95,200	900 ~ 1,900	1.00%~ 2.00%	+	CON(11.71%)	INF (-9.25%)
Champaign-Urbana-Rantoul	108,000	108,100	100~300	0.15%~ 0.24%	+	EDU (2.28%)	LEI (-1.99%)
Chicago	4,011,600	4,022,800	11,200~-28,000	0.28%~0.70%	+	PRO (2.69%)	FIN (-1.40%)
Davenport-Rock Island-Moline	184,700	185,400	700~ 1,700	0.38%~ 0.89%	+	EDU (1.17%)	INF (-2.93%)
Decatur	50,700	50,600	-100~200	-0.23%~-0.37%	-	EDU (2.14%)	INF (-4.81%)
Kankakee	44,500	44,900	400~500	0.95%~ 1.07%	+	INF (9.47%)	PRO (-1.48%)
Peoria	179,400	180,500	1,100~2,200	0.60 %~ 1.21%	+	PRO (7.55%)	FIN (-3.75%)
Rockford	151,200	151,800	600~1,100	0.39%~0.71%	+	MAN (1.55%)	CON (-4.28%)
Springfield	112,100	112,000	-20~50	-0.02%~ 0.05%	-	PRO (3.17%)	CON (-6.78%)

*Total Non-Farm Jobs

