

# Illinois Job Index:

## MSA Report

Release Mar 29/2015	data Jan 1990 / February 2015	Issue 15.3	www.real.illinois.edu
------------------------	----------------------------------	---------------	-----------------------

Note: IDES revised their estimates for the number of jobs at the beginning of 2015.

As a companion to the Sep 2014 Illinois Job Index that reports an positive rating, this MSA Report provides a localized picture on Illinois job growth and allows for comparisons between local economies, Illinois, the Nation and the Rest of the Midwest.

Mar 2015	Total non-farm employment	February 2015 Number of Jobs	Jan 2015 – Feb 2015		Last 12 months	
			Growth Rate (%)	Number of Jobs	Growth Rate (%)	Number of Jobs
	<b>Nation</b>	141,126,000	0.21	295,000	2.39	3,296,000
	<b>Rest of Midwest (RMW)</b>	19,873,200	0.19	37,700	1.82	354,400
	<b>Illinois</b>	5,916,000	0.23	13,800	1.37	79,800
	<b>Illinois Metro</b>	5,169,800	0.11	5,900	1.30	66,400
	<b>Illinois non-Metro (Rural)</b>	746,200	1.07	7,900	1.83	13,400
	<b>Illinois Chicago (Upstate)</b>	4,018,500	0.20	8,100	1.59	62,900
	<b>Illinois non-Chicago</b>	1,897,500	0.30	5,700	0.90	16,900

The monthly Illinois Job Index and MSA Report are provided as tools for elected officials, policy leaders and the public. Understanding the Illinois economy and business climate is enhanced by comparing and measuring Illinois employment growth rates against those of the Rest of the Midwest (RMW: Indiana, Iowa, Michigan, Missouri, Ohio and Wisconsin) and the Nation. Data and analysis are provided by the Illinois Economic Observatory / Regional Economics Applications Laboratory, University of Illinois. The MSA data (unless noted) were seasonally adjusted to be consistent with state totals.

### Talking Points

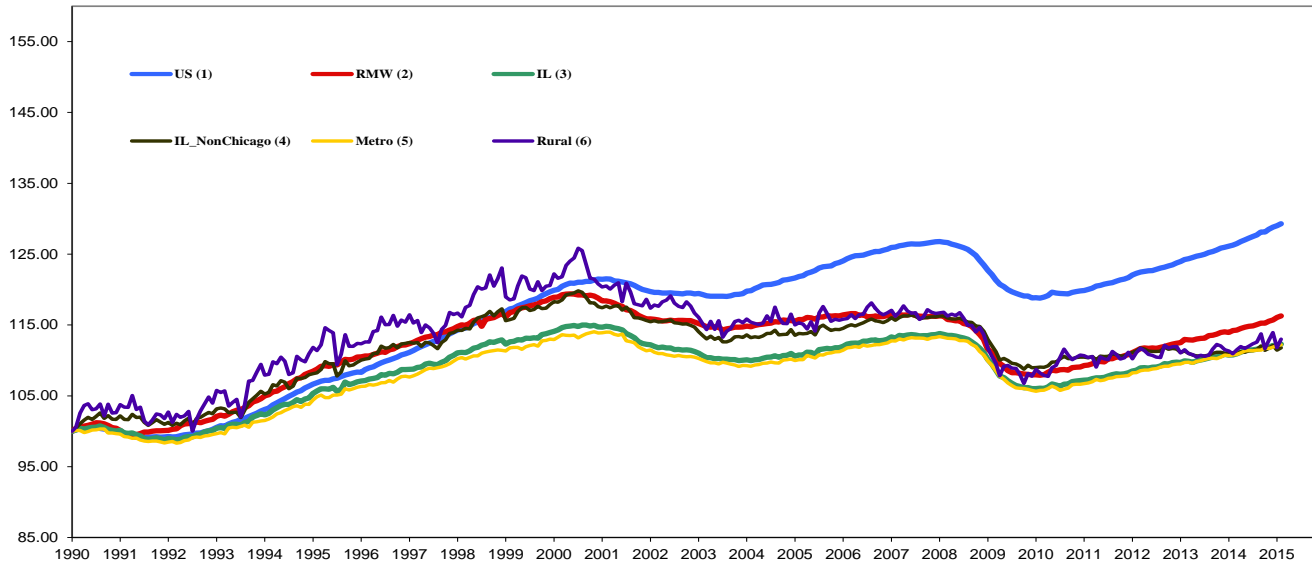
#### State, Downstate & Metro

- Illinois added 13,800 jobs in February 2015, compared with a job loss of 4,800 in January 2015. Compared to February 2014, Illinois has added 79,800 jobs. The three-month moving average of jobs, a more stable measure of the labor market, was up by 8,200 jobs per month.
- Illinois has a net loss of 78,500 jobs since the economic crisis developed in December 2007.
- Since January 2010 when Illinois employment resumed after the national recession, Illinois has added 331,100 new jobs.
- The major geographic divisions, Chicago-Downstate and Metro-Rural all had positive performances.
- Illinois Rural area added 7,900 jobs at 1.07% this month, compared to a revised 14,100 job loss in January 2015. At the same time, Metro added 5,900 jobs at 0.11% this month, compared to a revised 9,300 job gain in the previous month.
- Chicago added 8,100 jobs at 0.20% in February 2015, compared to a revised 6,600 job gain last month. Meanwhile, Downstate added 5,700 jobs at 0.30%, compared to a revised 11,400 job loss last month.
- In terms of the 12-month aggregated account, Metro registered a positive 1.30 % growth by adding 66,400 jobs whereas Rural added 13,400 jobs at 1.83 %. Chicago added 62,900 jobs at 1.59% whereas Downstate added 16,900 jobs at 0.90%.
- Through February 2015, the cumulative job growth for Metro, Rural, Chicago and Downstate compared to January 1990 stood at 12.19%, 12.99%, 12.54% and 11.78% respectively.

#### MSA page (2-4)

- Illinois Metro added 5,900 jobs at 0.11% in February 2015. Six out of ten MSAs posted positive growth.
- Since the job recovery resumed in Jan 2010 in Illinois, Chicago Upstate has shown an average growth rate of 11.81%, which is the highest among all the IL MSAs; Decatur has experienced the lowest average growth rate, -3.02%.
- In terms of growth performance, six MSAs posted net improvements from January to February, four declined in terms of rank.
- Davenport-Rock Island-Moline dropped to the last place in terms of monthly growth performance, while Kankakee climbed to the first place.
- Over the last 12-month period, Champaign-Urbana-Rantoul remained in the first place while Bloomington-Normal dropped to the last place.

## Total non-farm Employment growth Jan 1990 – February 2015



## Talking Points

### State, Downstate & Metro

- While the average growth for Illinois between 1990 and 2008 was 0.04%, the average from December 2007 to February 2015 was -0.01%. This is better than the performance during the 2000-2001 downturns which saw declines of -0.09%.
- Since the economic crisis in December 2007, the average growth for Metro is -0.01% while for Rural it is -0.03%. The same rate for Chicago (Upstate) is 0.00% and for Downstate it is -0.04%.
- Over the last 12-month period, the average growth rate for Metro was 0.11% and for Rural it was 0.16%.
- Downstate registered a -0.15% average job loss in 2015 compared to an average gain of 0.04% in 2007, -0.11% decline in 2008, -0.35% decline in 2009, 0.13% growth in 2010, 0.01% growth in 2011, 0.11% growth in 2012, -0.03% decline in 2013 and 0.08% job growth in 2014..

### Average Growth Rates for Illinois, RMW and the Nation

	2011(%)	2012(%)	2013(%)	2014(%)	2015(%)
Illinois	0.08	0.12	0.07	0.09	0.08
RMW	0.13	0.12	0.12	0.12	0.25
Nation	0.13	0.14	0.14	0.19	0.19

### By MSA

Market Area	Feb 2015 Number of Jobs	January 2015 – February 2015			Last 12 months	
		Growth compared to Illinois	Growth Rate %	Number Of Jobs	Growth Rate %	Number of Jobs
Bloomington-Normal (B-N)	94,300	-	0.12	100	-0.55	-500
Champaign-Urbana (C-U-R)	108,400	+	0.27	300	2.21	2,300
Chicago	4,018,500	-	0.20	8,100	1.59	62,900
Davenport-Rock Island-Moline (D-R-M)	183,200	-	-0.83	-1,500	-0.24	-400
Decatur	50,700	-	-0.11	-100	-0.21	-100
Kankakee	44,900	+	0.38	200	1.33	600
Peoria	177,500	-	-0.78	-1,400	-0.51	-900
Rockford	151,500	-	0.13	200	1.59	2,400
Springfield	112,100	-	0.11	100	1.28	1,400
Metro-East	228,700	-	-0.01	-30	-0.54	-1,200
<b>Illinois</b>			<b>0.23</b>	<b>13,800</b>	<b>1.37</b>	<b>79,800</b>

# MSA League Tables\*: Non-farm Employment Growth Rate

## Monthly growth:

Rank	January 2015	February 2015	Rank	Change**
1	Peoria(0.85%)	Kankakee(0.38%)	1	↑(+9)
2	Davenport-Rock Island-Moline(0.6%)	Champaign-Urbana-Rantoul(0.27%)	2	↑(+1)
3	Champaign-Urbana-Rantoul(0.34%)	Chicago(0.2%)	3	↑(+2)
4	Bloomington-Normal(0.25%)	Rockford (0.13%)	4	↑(+3)
5	Chicago(0.2%)	Bloomington-Normal(0.12%)	5	↓(-1)
6	Metro-East(0.18%)	Springfield (0.11%)	6	↑(+2)
7	Rockford (-0.05%)	Metro-East(-0.01%)	7	↓(-1)
8	Springfield (-0.09%)	Decatur(-0.11%)	8	↑(+1)
9	Decatur(-0.68%)	Peoria(-0.78%)	9	↓(-8)
10	Kankakee(-0.99%)	Davenport-Rock Island-Moline(-0.83%)	10	↓(-8)

## Growth over last 12-months:

Rank	January 2015	February 2015	Rank	Change**
1	Champaign-Urbana-Rantoul (1.95%)	Champaign-Urbana-Rantoul (2.21%)	1	←(+0)
2	Rockford (1.63%)	Rockford (1.59%)	2	←(+0)
3	Chicago (1.53%)	Chicago (1.59%)	3	←(+0)
4	Peoria (0.58%)	Kankakee (1.33%)	4	↑(+3)
5	Davenport-Rock Island-Moline (0.56%)	Springfield (1.28%)	5	↑(+1)
6	Springfield (0.52%)	Decatur (-0.21%)	6	↑(+4)
7	Kankakee (0.43%)	Davenport-Rock Island-Moline (-0.24%)	7	↓(-2)
8	Metro-East (-0.14%)	Peoria (-0.51%)	8	↓(-4)
9	Bloomington-Normal (-1.05%)	Metro-East (-0.54%)	9	↓(-1)
10	Decatur (-1.2%)	Bloomington-Normal (-0.55%)	10	↓(-1)

## Talking Points

### MSA League Tables

- Peoria (1st to 9th) and Davenport-Rock Island-Moline (2nd to 10th) experienced the deepest falls this month.
- Bloomington-Normal (4th to 5th) and Metro-East (6th to 7th) also dropped in terms of rank from last month.
- The most remarkable upward move in February was recorded for Kankakee (10th to 1st).
- In the 12 months growth league table, upward moves were recorded for Kankakee (7th to 4th), Springfield (6th to 5th) and Decatur (10th to 6th).
- Downward moves were recorded for Davenport-Rock Island-Moline (5th to 7th), Peoria (4th to 8th) Bloomington-Normal (9th to 10th) and Metro-East (8th to 9th).
- In the 12 months growth league table, Bloomington-Normal dropped to the last place and Champaign-Urbana-Rantoul remained in the first place.

\*MSA League Tables are based on revised employment data. For instances of equal growth rate for multiple MSAs ranks are decided based on change of growth rate from previous month.

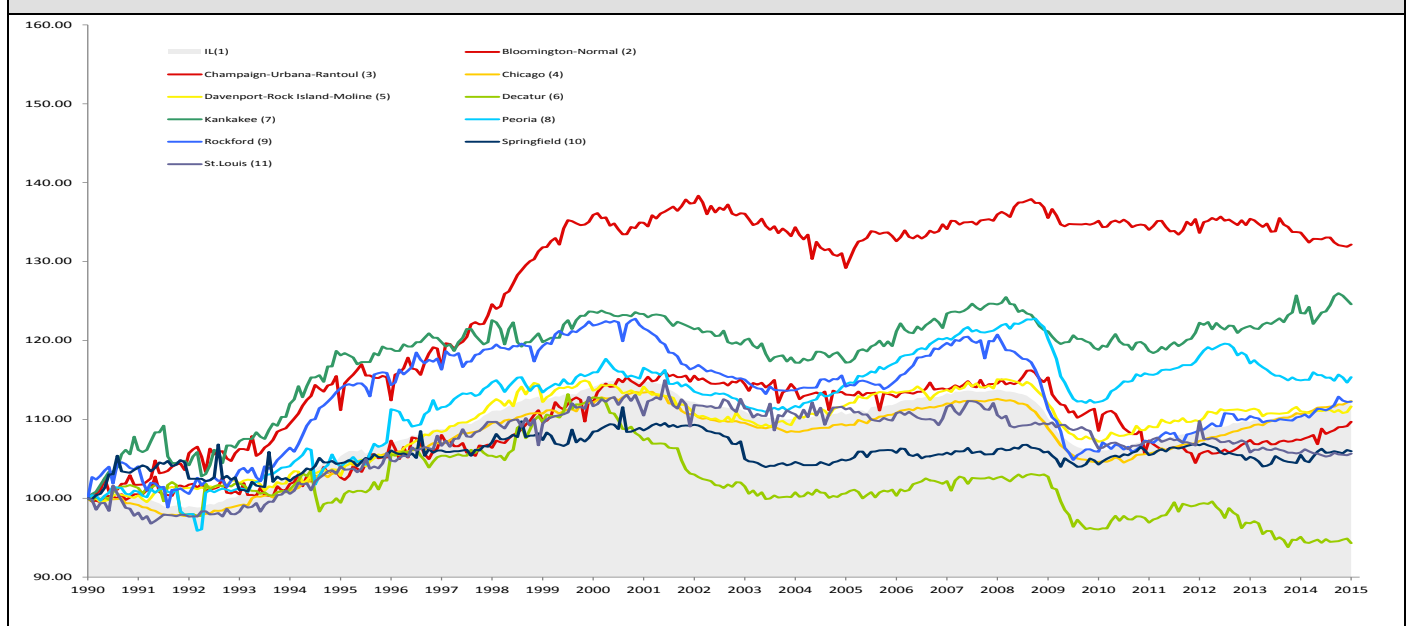
\*\*Changes indicate change in rank position compared to previous month and correspond to the MSA at the right column. Rise is indicated by a '↑' and decline by a '↓' and for an unchanged position a '←' is used. Figures in parenthesis indicate relative rank change from previous month.

February 2015 MSA Employment by Sectors (000s) \*

Market Area	Construction (CON)	Manufacturing (MAN)	Trade, transportation & utilities (TTU)	Information (INF)	Financial activities (FIN)	Professional & business services (PRO)	Education & health (EDU)	Leisure & hospitality (LEI)	Other Services (OTH)	Government (GOV)
Bloomington-Normal	2.63 (2.8%)	4.79 (5.1%)	15.47 (16.4%)	0.69 (0.7%)	12.1 (12.8%)	17.34 (18.4%)	10.74 (11.4%)	11.15 (11.8%)	3.73 (4%)	15.64 (16.6%)
Champaign-Urbana	3.19 (2.9%)	7.94 (7.3%)	17.01 (15.7%)	2.49 (2.3%)	4.47 (4.1%)	8.34 (7.7%)	14.27 (13.2%)	11.3 (10.4%)	3.48 (3.2%)	35.91 (33.1%)
Chicago	130.9 (3.3%)	337.31 (8.4%)	811.49 (20.2%)	75.09 (1.9%)	268.58 (6.7%)	749.66 (18.7%)	614.9 (15.3%)	383.94 (9.6%)	171.5 (4.3%)	474.8 (11.8%)
Davenport-Rock Island-Moline	9.26 (5.1%)	24.18 (13.2%)	39.68 (21.7%)	2.3 (1.3%)	7.97 (4.3%)	22.29 (12.2%)	25.86 (14.1%)	18.61 (10.2%)	7.32 (4%)	25.9 (14.1%)
Decatur	3.11 (6.1%)	10.22 (20.2%)	10.76 (21.2%)	0.6 (1.2%)	1.92 (3.8%)	3 (5.9%)	8.17 (16.1%)	5.12 (10.1%)	2.28 (4.5%)	5.55 (11%)
Kankakee	1.27 (2.8%)	5.81 (13%)	10.6 (23.6%)	0.41 (0.9%)	1.94 (4.3%)	4 (8.9%)	8.63 (19.2%)	3.74 (8.3%)	1.7 (3.8%)	6.87 (15.3%)
Peoria	7.73 (4.4%)	26.5 (14.9%)	32.42 (18.3%)	2.22 (1.2%)	7.65 (4.3%)	20.48 (11.5%)	33.62 (18.9%)	17.87 (10.1%)	7.83 (4.4%)	21.22 (12%)
Rockford	4.32 (2.9%)	32.6 (21.5%)	29.13 (19.2%)	1.4 (0.9%)	5.59 (3.7%)	16.23 (10.7%)	23.67 (15.6%)	13.28 (8.8%)	8.74 (5.8%)	16.62 (11%)
Springfield	4.73 (4.2%)	3.02 (2.7%)	17.53 (15.6%)	1.71 (1.5%)	7.12 (6.3%)	10.28 (9.2%)	20.39 (18.2%)	11.24 (10%)	6.48 (5.8%)	29.79 (26.6%)
IL	211.19 (3.6%)	578.87 (9.8%)	1180.05 (19.9%)	98.81 (1.7%)	368.68 (6.2%)	931.18 (15.7%)	896.76 (15.2%)	562.57 (9.5%)	253.61 (4.3%)	828.47 (14%)

\*The Illinois Department of Employment Security does not collect sector employment data for Metro-East

Total non-farm Employment growth rate Jan 1990 – February 2015



MSA DESCRIPTION: **Bloomington-Normal (B-N):** McLean Co. **Champaign-Urbana (C-U-R):** Champaign Co., Ford Co. & Piatt Co. **Chicago:** Cook Co. IL, DeKalb Co. IL, DuPage Co. IL, Grundy Co. IL, Kane Co. IL, Kendall Co. IL, Lake Co. IL, McHenry Co. IL, Will Co. IL & Kenosha Co. WI **Davenport-Moline-Rock Island (D-R-M):** Henry Co. IL, Mercer Co. IL, Rock Island Co. IL & Scott Co. IA **Decatur:** Macon Co. **Kankakee:** Kankakee Co. **Metro-East:** Bond Co., Calhoun Co., Clinton Co., Jersey Co., Macoupin Co., Madison Co., Monroe Co. & St. Clair Co. **Peoria-Pekin (Peoria):** Marshall Co., Peoria Co., Stark Co., Tazewell Co. & Woodford Co. **Rockford:** Boone Co. & Winnebago Co. **Springfield:** Menard Co. & Sangamon Co. The MSA data (unless noted) were seasonally adjusted to be consistent with state totals.

# Employment Forecast for MSAs

MSAs	February 2015*	February 2016 (p)*	Number of Jobs *	Growth Rate %	Growth	Sector with Highest Growth Rate (p)	Sector with Lowest Growth Rate (p)
Bloomington-Normal	94,300	95,300	900 ~ 1,900	0.99%~ 2.02%	+	GOV (3.92%)	INF (-7.31%)
Champaign-Urbana-Rantoul	108,400	108,700	200~250	0.20%~ 0.23%	+	EDU (2.39%)	MAN (-2.65%)
Chicago	4,018,500	4,071,100	52,700~89,000	1.31%~2.21%	+	PRO (3.38%)	MAN (-0.50%)
Davenport-Rock Island-Moline	183,200	183,500	300~ 1,100	0.15%~ 0.61%	+	EDU (2.55%)	PRO (-5.60%)
Decatur	50,700	50,400	-300~-100	-0.57%~-0.27%	-	EDU (1.05%)	INF (-5.86%)
Kankakee	45,000	44,700	-200~130	-0.48%~ 0.29%	-	INF (3.97%)	CON (-4.13%)
Peoria	177,500	177,200	-300~500	-0.14 %~ 0.26%	-	TTU (2.30%)	FIN (-4.75%)
Rockford	151,500	152,100	600~1,000	0.41%~0.67%	+	MAN (2.60%)	CON (-5.69%)
Springfield	112,100	111,000	0~100	0.01%~ 0.06%	+	PRO (2.69%)	MAN (-4.27%)

\*Total Non-Farm Jobs

