

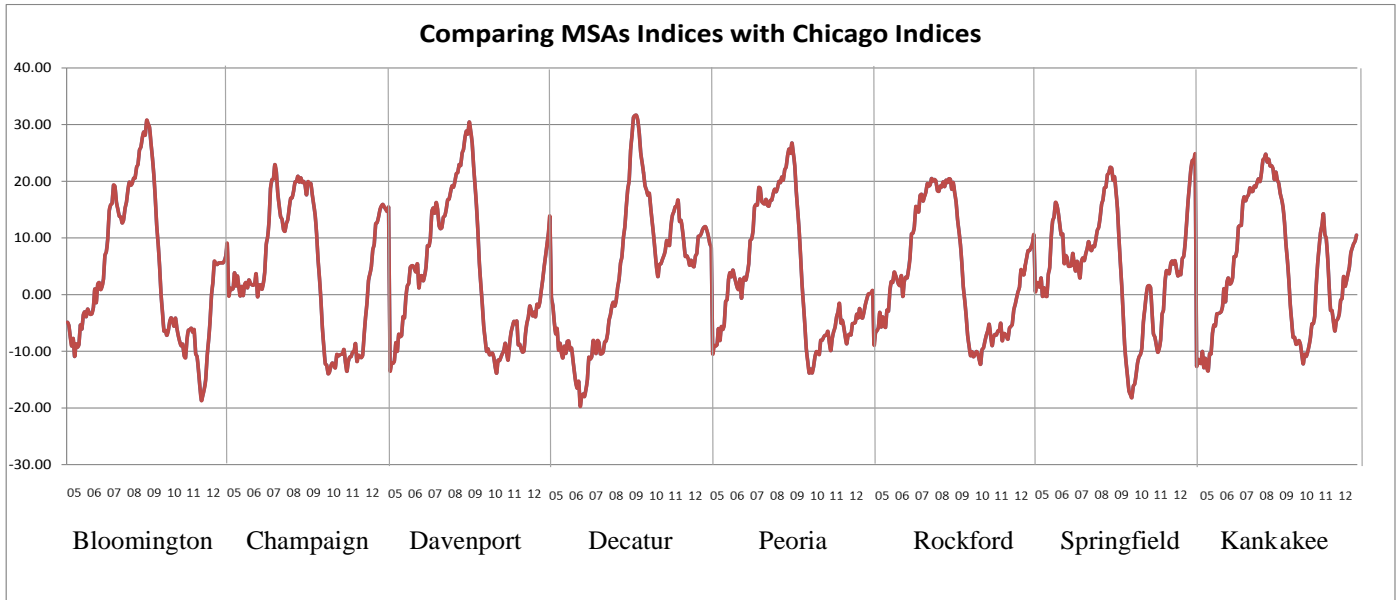
ILLINOIS

MSA Indices & Forecast

R | E | A | L

Release 12/15/2012	data May 2004 / Oct 2012	Issue 2012.12	www.real.illinois.edu
------------------------------	------------------------------------	-------------------------	------------------------------

Note: Values shown on the "1 Year" forecast represent a pessimistic – optimistic scenario. For estimated values please see Appendix.

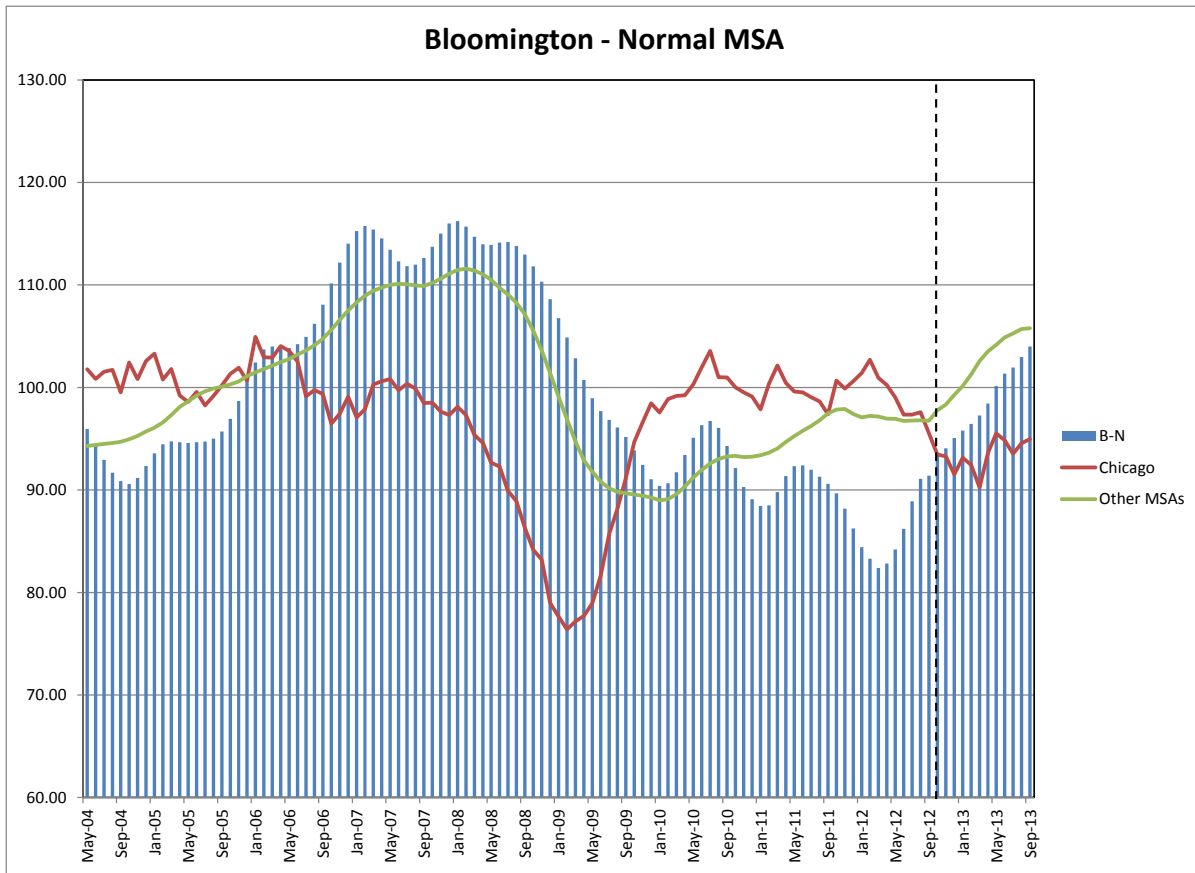


*When figures dropping zero represents that MSAs are doing worse than Chicago; when figures rising above zero represents that MSAs are doing better than Chicago.

- Before Jan 2008, MSA Decatur performed worse than Chicago. However, after Jan 2008, it started performing better than Chicago.
- From early 2007 to early 2009, MSA Bloomington, Champaign-Urbana-Rantoul, Davenport, Peoria, Rockford, Springfield and Kankakee performed better than Chicago.
- However, from Mid-2009 to late-2011, these MSAs performed worse than Chicago.
- According to the forecast for Aug 2013, MSA Bloomington, Champaign-Urbana-Rantoul, Davenport-Rock Island-Moline, Decatur, Rockford, Springfield and Kankakee will do better than Chicago by Aug 2013. MSA Peoria might perform no better than Chicago.

❖ **Bloomington-Normal (Reference Month – Oct 2012)**

Current	92.88		
	1 Month	3 Month	1 Year
Historical	91.40	88.89	89.68
Forecast	93.44	95.08	91.32 ~ 107.74

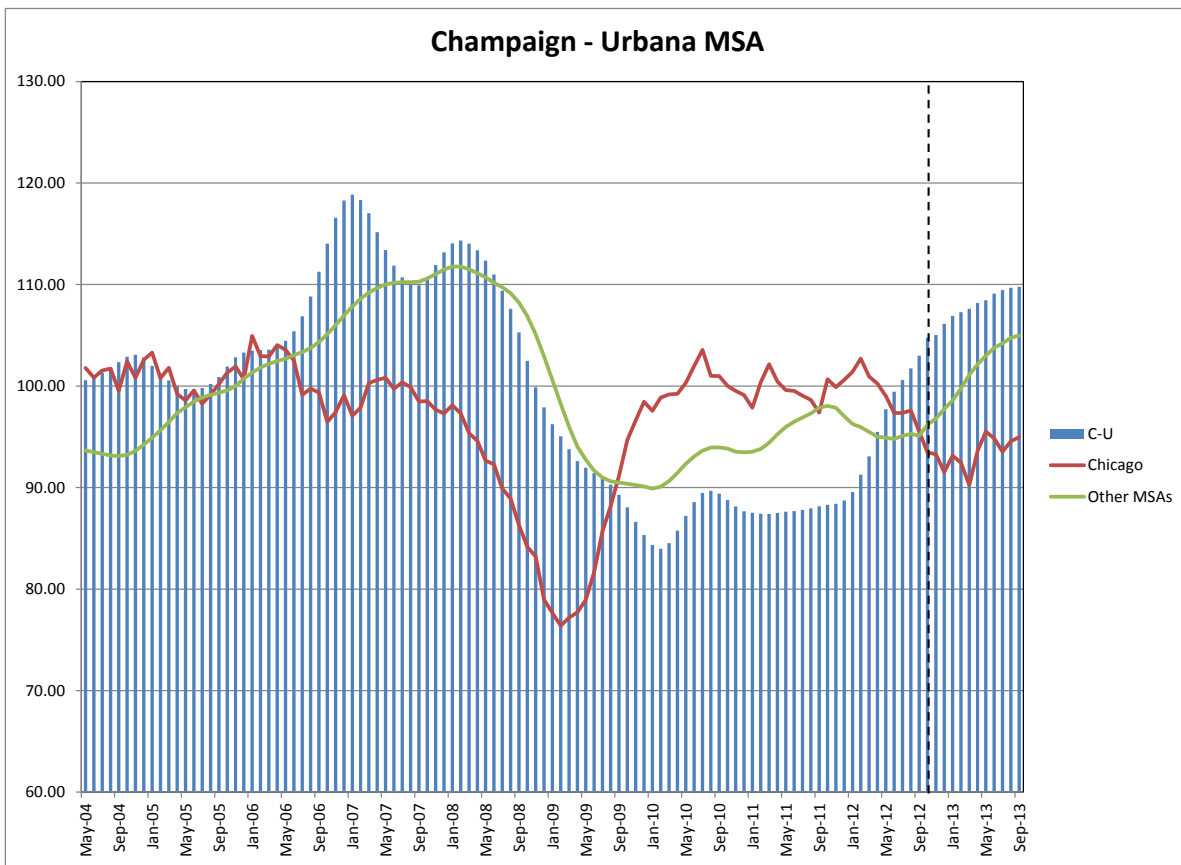


Bloomington-Normal MSA League: Non-Farm Employment Growth Rate:

- Bloomington-Normal in August gained by moving up 3 positions reaching the 3rd place of the rank.
- In the 12 month growth league table Bloomington-Normal moving up 2 positions reaching the 3rd place of the rank.

❖ **Champaign-Urbana (Reference Month – Sep 2012)**

Current	103.34		
	1 Month	3 Month	1 Year
Historical	102.99	100.60	88.30
Forecast	104.75	106.13	98.31 ~ 119.07

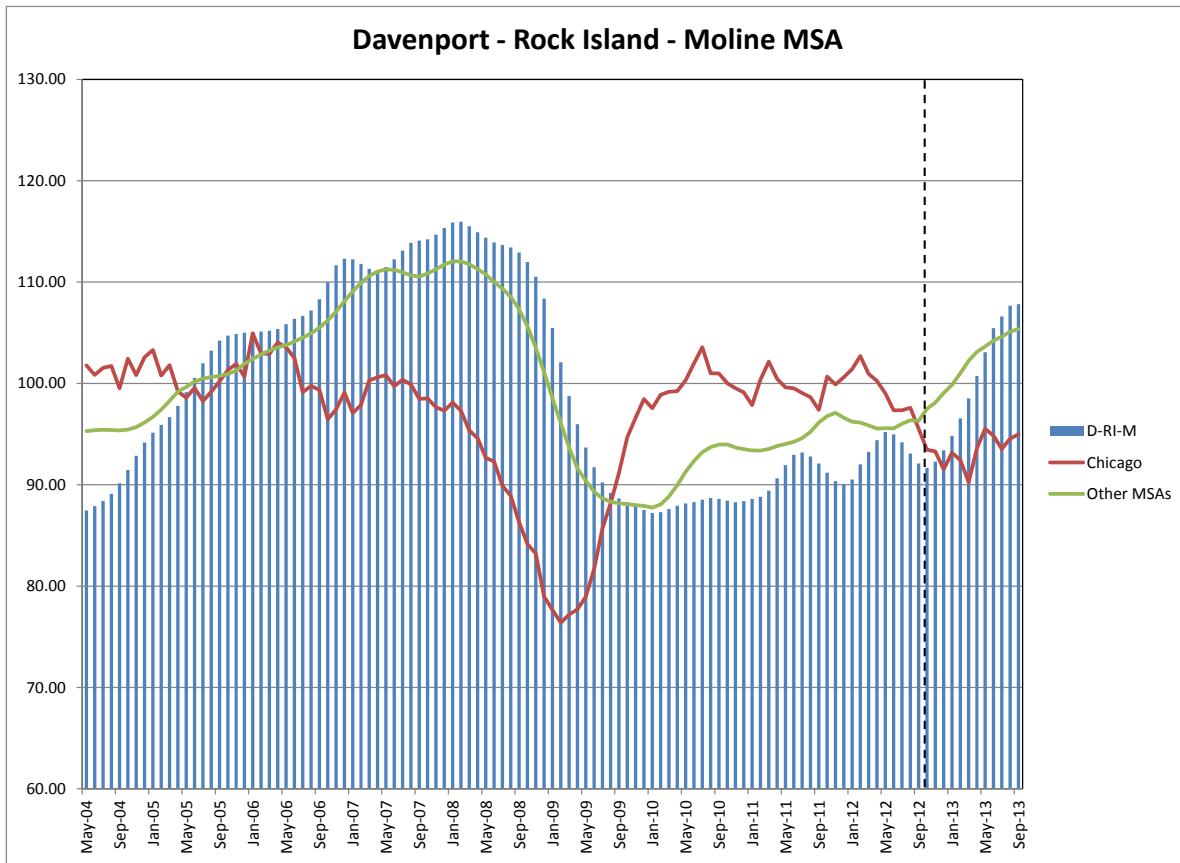


Champaign- Urbana MSA League: Non-Farm Employment Growth Rate:

- Champaign-Urbana-Rantoul lost in August by moving down 6 positions reaching the 8th place in the rank.
- In the 12 months growth league table, Champaign-Urbana-Rantoul moving down 2 positions reaching the 8th place of the rank.

❖ **Davenport-Rock Island-Moline (Reference Month – Sep 2012)**

Current	91.58		
	1 Month	3 Month	1 Year
Historical	92.10	94.19	91.20
Forecast	91.66	93.38	94.36 ~ 117.43

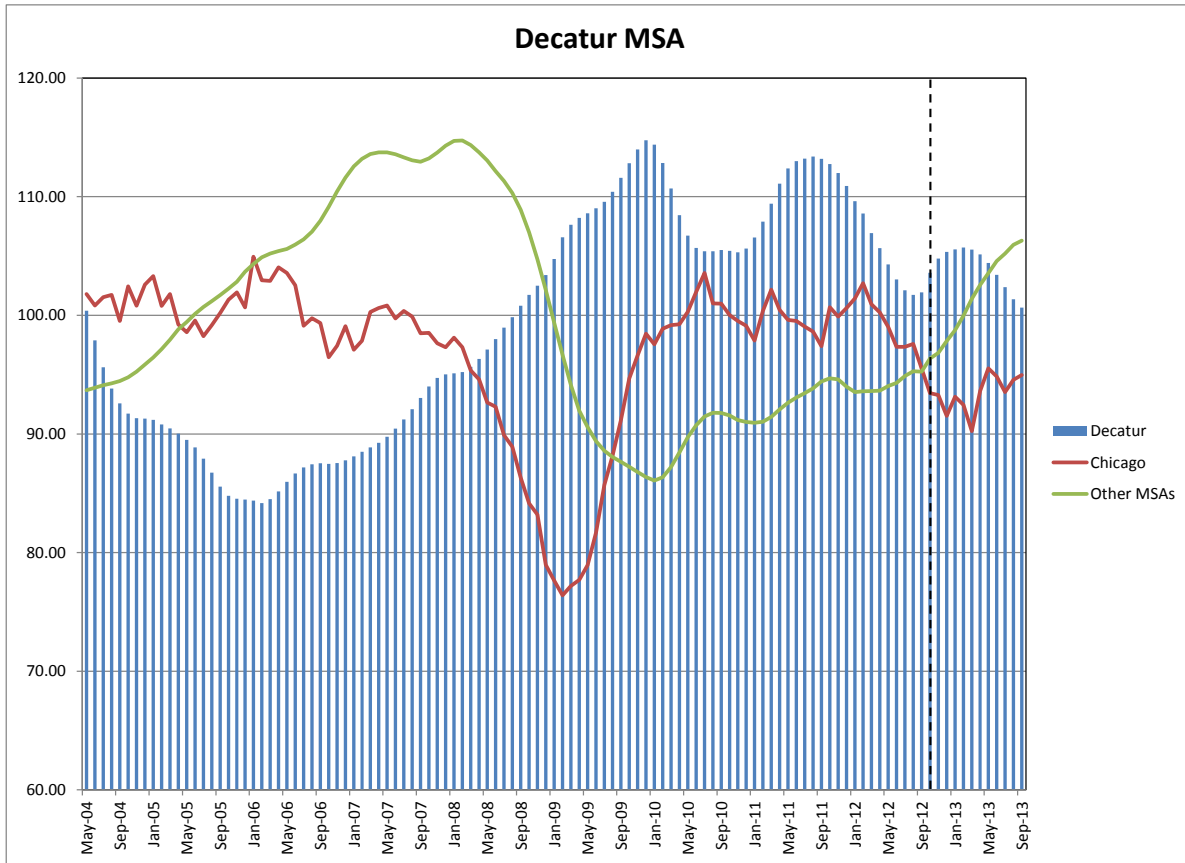


Davenport – Rock Island–Moline MSA League: Non-Farm Employment Growth Rate:

- Davenport-Rock Island-Moline in August moving up 1 position reaching the 7th place in the rank.
- In the 12 months growth league table, Davenport – Rock Island – Moline moved up 3 positions to the 6th place in the rank.

❖ Decatur (Reference Month – Sep 2012)

Current	102.75		
	1 Month	3 Month	1 Year
Historical	101.93	102.11	112.76
Forecast	103.58	105.35	98.77 ~ 112.78

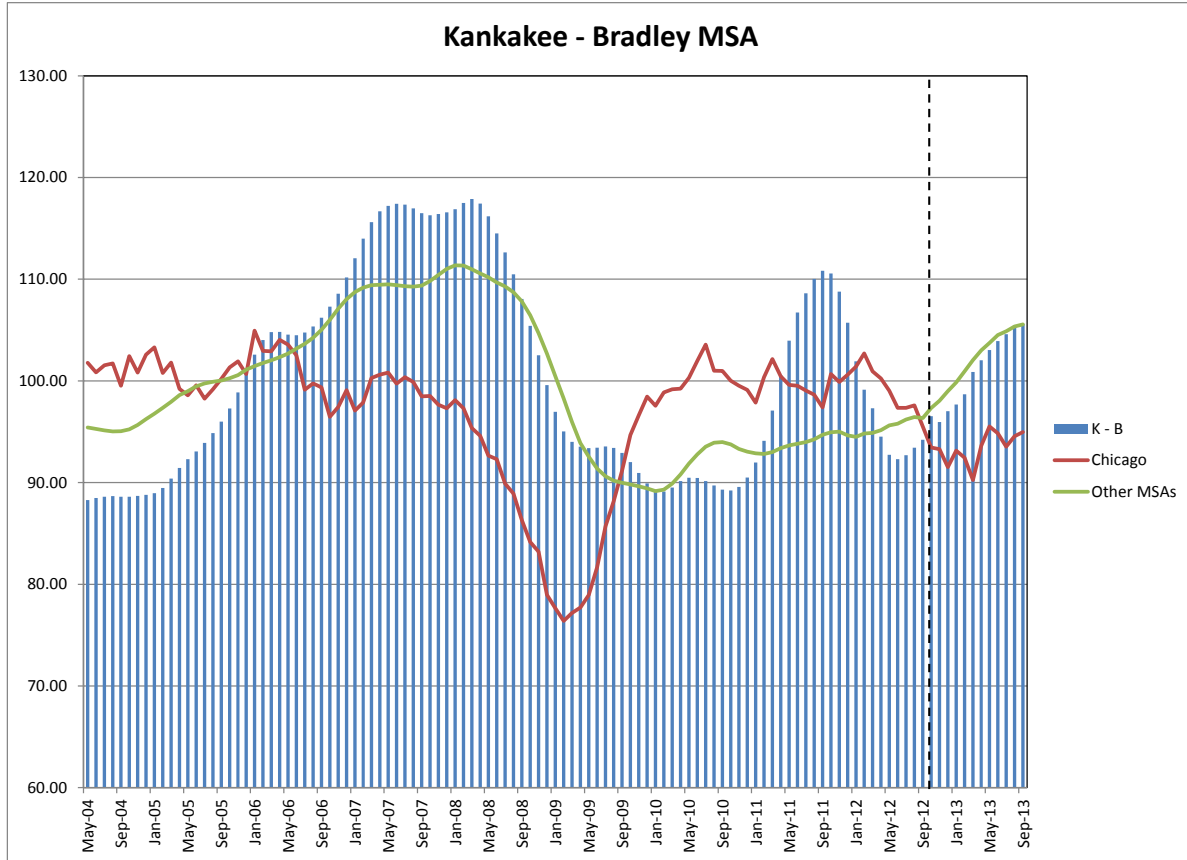


Decatur MSA League: Non-Farm Employment Growth Rate

- Compared to the previous month, Decatur in August moved up 1 position reaching the first place in the rank.
- In the 12 months growth league table, Decatur remained in the last place in the rank.

❖ **Kankakee - Bradley (Reference Month – Sep 2012)**

Current	94.82		
	1 Month	3 Month	1 Year
Historical	94.21	92.69	110.56
Forecast	96.53	97.01	97.16 ~ 111.77

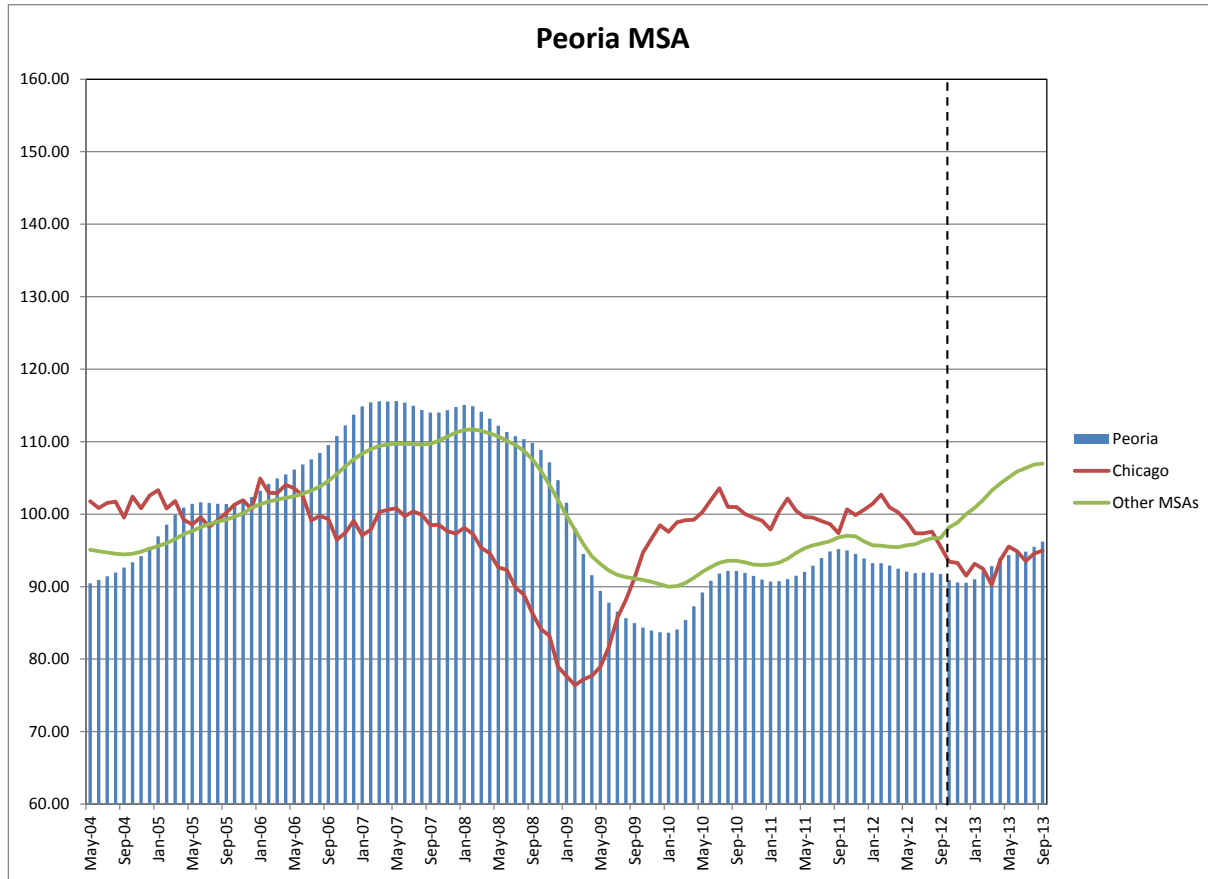


Kankakee - Bradley MSA League: Non-Farm Employment Growth Rate

- Compared to last month, Kankakee – Bradley remained in the 9th place in the rank.
- In the 12 months growth league table, Kankakee– Bradley moving down 3 positions reaching the 5th position of the rank.

❖ **Peoria (Reference Month – Sep 2012)**

Current	91.39		
	1 Month	3 Month	1 Year
Historical	91.75	91.91	95.01
Forecast	90.94	90.55	89.45 ~ 101.13

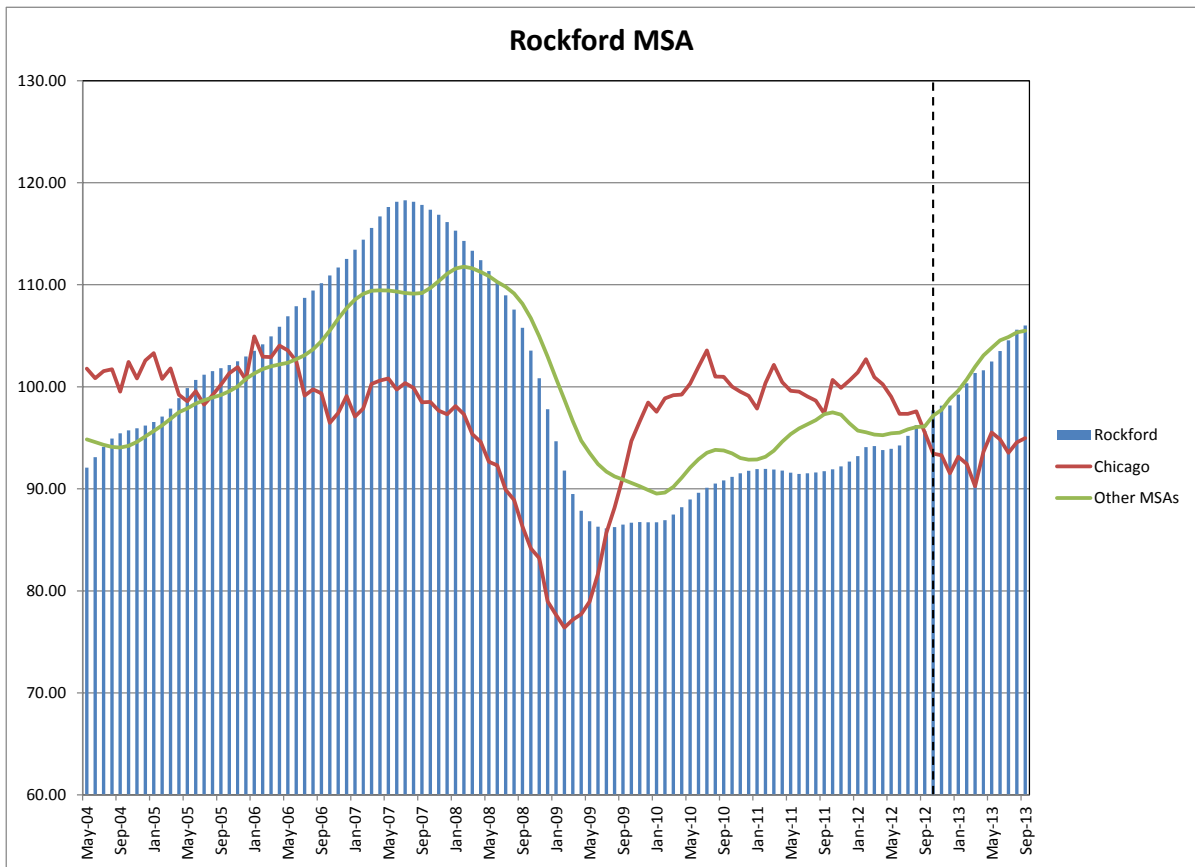


Peoria MSA League: Non-Farm Employment Growth Rate

- Peoria in August moved up 5 positions reaching the 2nd place in the rank.
- In the 12 months growth league table, Peoria remained in the 1st place in the rank.

❖ **Rockford (Reference Month – Sep 2012)**

Current	96.82		
	1 Month	3 Month	1 Year
Historical	95.66	95.20	91.91
Forecast	97.70	98.16	95.71 ~ 108.67

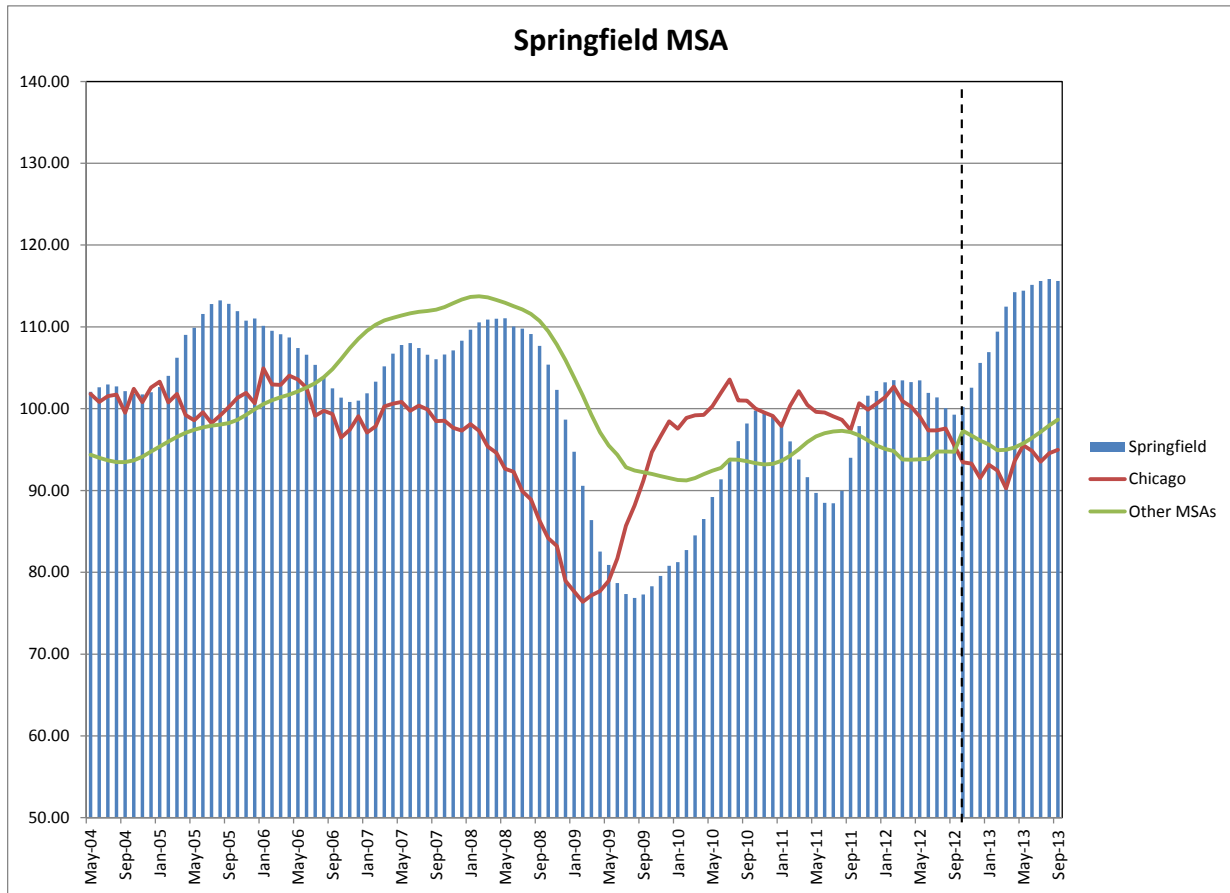


Rockford MSA League: Non-Farm Employment Growth Rate

- Rockford lost in August by moving down 9 positions, reaching the last place of the rank.
- In the 12 months growth league table, Rockford moved up 1 position reaching in the 2nd place in the rank.

❖ **Springfield (Reference Month – Sep 2012)**

Current	98.57		
	1 Month	3 Month	1 Year
Historical	99.27	101.37	97.88
Forecast	100.21	105.60	107.01 ~ 119.00



Springfield MSA League: Non-Farm Employment Growth Rate

- Springfield dropped 1 position in the rank of August reaching the 4th place.
- In the 12 months growth league table Springfield remained in the 7th place in the rank.

Notes:

- MSA Indices series are available in the appendix.

Appendix

month	B - N	C - U	D-RI-M	Decatur	Peoria	Rockford	Springfield	K-B
May-04	95.96	100.57	87.47	100.38	90.46	92.08	102.07	88.28
Jun-04	94.43	100.93	87.88	97.89	90.92	93.11	102.63	88.48
Jul-04	92.93	101.30	88.41	95.62	91.44	94.12	102.96	88.61
Aug-04	91.68	101.78	89.11	93.82	91.96	94.92	102.73	88.67
Sep-04	90.87	102.36	90.14	92.58	92.62	95.44	102.14	88.62
Oct-04	90.58	102.89	91.47	91.71	93.35	95.72	101.79	88.61
Nov-04	91.17	103.08	92.86	91.33	94.21	95.93	101.74	88.69
Dec-04	92.33	102.83	94.17	91.30	95.43	96.19	102.02	88.79
Jan-05	93.57	101.99	95.13	91.19	96.95	96.55	102.65	88.95
Feb-05	94.46	101.22	95.92	90.79	98.56	97.08	104.01	89.48
Mar-05	94.74	100.55	96.68	90.46	99.90	97.87	106.24	90.39
Apr-05	94.66	99.99	97.79	90.02	100.89	98.88	109.02	91.45
May-05	94.59	99.71	99.13	89.50	101.44	99.88	109.90	92.30
Jun-05	94.67	99.70	100.53	88.87	101.63	100.67	111.58	93.07
Jul-05	94.73	99.82	101.99	87.92	101.56	101.19	112.79	93.90
Aug-05	95.01	100.20	103.24	86.74	101.42	101.53	113.23	94.86
Sep-05	95.71	100.90	104.21	85.56	101.40	101.82	112.83	95.99
Oct-05	96.95	101.92	104.72	84.78	101.52	102.13	111.93	97.30
Nov-05	98.68	102.82	104.89	84.54	101.81	102.50	110.77	98.88
Dec-05	100.66	103.29	105.01	84.47	102.37	102.97	111.02	100.72
Jan-06	102.44	103.48	105.05	84.37	103.22	103.53	110.13	102.59
Feb-06	103.72	103.55	105.12	84.16	104.19	104.16	109.51	104.02
Mar-06	103.99	103.58	105.19	84.51	104.91	104.93	109.11	104.80
Apr-06	103.84	103.89	105.37	85.15	105.48	105.89	108.71	104.82
May-06	103.86	104.44	105.83	85.96	106.14	106.92	107.42	104.55
Jun-06	104.22	105.40	106.38	86.67	106.85	107.89	106.58	104.49
Jul-06	104.95	106.86	106.66	87.18	107.57	108.72	105.35	104.75
Aug-06	106.22	108.82	107.20	87.45	108.43	109.44	103.96	105.35
Sep-06	108.09	111.26	108.31	87.52	109.52	110.16	102.47	106.21
Oct-06	110.15	114.03	109.99	87.48	110.79	110.91	101.34	107.29
Nov-06	112.18	116.58	111.64	87.55	112.24	111.69	100.81	108.58
Dec-06	114.03	118.28	112.31	87.77	113.72	112.54	100.99	110.17
Jan-07	115.27	118.84	112.24	88.11	114.86	113.44	101.89	112.07
Feb-07	115.75	118.31	111.79	88.50	115.43	114.42	103.31	113.98
Mar-07	115.41	117.02	111.30	88.87	115.57	115.56	105.17	115.60
Apr-07	114.54	115.16	111.09	89.25	115.55	116.70	106.74	116.68
May-07	113.43	113.40	111.48	89.76	115.59	117.62	107.78	117.20
Jun-07	112.31	111.86	112.24	90.46	115.39	118.14	108.02	117.42
Jul-07	111.83	110.70	113.11	91.22	114.95	118.27	107.41	117.33
Aug-07	111.99	109.98	113.86	92.09	114.38	118.13	106.60	116.97
Sep-07	112.64	109.93	114.10	93.03	114.00	117.82	106.04	116.50
Oct-07	113.72	110.66	114.22	94.00	114.03	117.36	106.63	116.30
Nov-07	115.02	111.92	114.68	94.72	114.34	116.86	107.13	116.41
Dec-07	116.00	113.17	115.34	95.03	114.77	116.15	108.30	116.58
Jan-08	116.24	114.04	115.88	95.11	115.08	115.29	109.65	116.87
Feb-08	115.70	114.34	115.96	95.21	114.88	114.29	110.55	117.50

Mar-08	114.71	114.04	115.52	95.65	114.14	113.33	110.90	117.88
Apr-08	113.98	113.37	114.91	96.32	113.16	112.40	111.01	117.43
May-08	113.90	112.34	114.38	97.12	112.21	111.35	111.06	116.18
Jun-08	114.13	111.00	113.90	98.00	111.35	110.20	110.04	114.51
Jul-08	114.19	109.40	113.67	98.96	110.76	108.97	109.78	112.64
Aug-08	113.81	107.60	113.41	99.85	110.35	107.57	109.12	110.49
Sep-08	112.96	105.30	112.92	100.81	109.81	105.78	107.67	108.07
Oct-08	111.82	102.48	111.98	101.71	108.84	103.54	105.37	105.40
Nov-08	110.31	99.87	110.52	102.49	107.15	100.84	102.31	102.52
Dec-08	108.62	97.90	108.36	103.39	104.68	97.79	98.66	99.60
Jan-09	106.77	96.24	105.47	104.75	101.56	94.66	94.74	96.95
Feb-09	104.88	95.05	102.09	106.57	98.10	91.79	90.58	95.03
Mar-09	102.84	93.79	98.77	107.63	94.50	89.49	86.38	94.01
Apr-09	100.73	92.60	95.97	108.21	91.57	87.85	82.53	93.53
May-09	98.95	91.95	93.68	108.60	89.41	86.82	80.91	93.40
Jun-09	97.70	91.43	91.73	109.03	87.78	86.28	78.69	93.43
Jul-09	96.84	90.89	90.24	109.57	86.56	86.12	77.33	93.55
Aug-09	96.10	90.28	89.20	110.41	85.65	86.25	76.87	93.41
Sep-09	95.16	89.29	88.65	111.58	84.97	86.49	77.28	92.92
Oct-09	93.86	88.04	88.30	112.82	84.36	86.69	78.28	92.01
Nov-09	92.44	86.62	87.92	113.98	83.94	86.74	79.55	90.96
Dec-09	91.04	85.32	87.50	114.75	83.70	86.73	80.78	89.93
Jan-10	90.40	84.35	87.21	114.39	83.66	86.72	81.24	89.24
Feb-10	90.67	83.97	87.29	112.84	84.08	86.94	82.72	89.12
Mar-10	91.72	84.53	87.60	110.69	85.41	87.47	84.52	89.51
Apr-10	93.42	85.76	87.94	108.44	87.28	88.21	86.52	90.14
May-10	95.09	87.21	88.15	106.71	89.18	88.96	89.21	90.47
Jun-10	96.33	88.57	88.28	105.67	90.80	89.61	91.35	90.45
Jul-10	96.74	89.48	88.54	105.40	91.80	90.11	93.74	90.15
Aug-10	96.05	89.68	88.70	105.40	92.17	90.51	96.02	89.71
Sep-10	94.29	89.40	88.60	105.50	92.14	90.83	98.19	89.32
Oct-10	92.14	88.77	88.43	105.43	91.90	91.17	99.76	89.22
Nov-10	90.28	88.13	88.27	105.30	91.47	91.51	99.46	89.57
Dec-10	89.09	87.67	88.38	105.62	90.97	91.77	99.13	90.51
Jan-11	88.45	87.52	88.61	106.56	90.69	91.94	97.84	91.98
Feb-11	88.50	87.41	88.81	107.90	90.74	91.95	95.99	94.11
Mar-11	89.79	87.40	89.40	109.40	91.03	91.88	93.78	97.07
Apr-11	91.37	87.49	90.63	111.09	91.51	91.78	91.64	100.56
May-11	92.32	87.63	91.94	112.38	92.05	91.59	89.71	103.96
Jun-11	92.41	87.70	92.97	112.99	92.89	91.46	88.49	106.72
Jul-11	91.98	87.81	93.19	113.20	93.95	91.52	88.44	108.62
Aug-11	91.29	87.95	92.79	113.38	94.86	91.60	89.96	110.03
Sep-11	90.60	88.15	92.09	113.19	95.19	91.72	94.01	110.83
Oct-11	89.68	88.30	91.20	112.76	95.01	91.91	97.88	110.56
Nov-11	88.17	88.41	90.35	111.99	94.52	92.20	101.60	108.78
Dec-11	86.26	88.74	90.07	110.90	93.88	92.68	102.17	105.71
Jan-12	84.43	89.56	90.52	109.62	93.25	93.21	103.21	101.93
Feb-12	83.29	91.27	92.01	108.59	93.24	94.09	103.48	99.14
Mar-12	82.39	93.07	93.24	106.93	92.92	94.19	103.47	97.31

Apr-12	82.82	95.48	94.40	105.66	92.47	93.81	103.24	94.52
May-12	84.19	97.72	95.22	104.28	92.06	93.93	103.45	92.73
Jun-12	86.21	99.43	94.97	103.02	91.86	94.25	101.92	92.31
Jul-12	88.89	100.60	94.19	102.11	91.91	95.20	101.37	92.69
Aug-12	91.10	101.74	93.08	101.72	91.93	96.25	100.05	93.43
Sep-12	91.40	102.99	92.10	101.93	91.75	95.66	99.27	94.21
Oct-12	92.88	103.34	91.58	102.75	91.39	96.82	98.57	94.82
Nov-12	93.44	104.75	91.66	103.58	90.94	97.70	100.21	96.53
Dec-12	94.07	105.03	92.29	104.78	90.58	98.14	102.57	95.96
Jan-13	95.08	106.13	93.38	105.35	90.55	98.16	105.60	97.01
Feb-13	95.80	106.90	94.83	105.55	91.02	99.25	106.90	97.69
Mar-13	96.45	107.27	96.55	105.72	92.11	100.34	109.42	98.69
Apr-13	97.27	107.62	98.53	105.54	92.85	101.34	112.49	100.87
May-13	98.44	108.19	100.72	105.13	93.99	101.62	114.23	102.02
Jun-13	100.13	108.44	103.08	104.42	94.35	102.47	114.42	103.04
Jul-13	101.34	109.12	105.46	103.40	94.70	103.50	115.14	103.91
Aug-13	101.95	109.46	106.60	102.37	94.83	104.54	115.60	104.59
Sep-13	102.97	109.68	107.66	101.35	95.50	105.59	115.84	105.44
Oct-13	104.01	109.79	107.80	100.64	96.19	106.02	115.60	105.57

Notes

B-N=Bloomington-Normal

C-U=Champaign-Urbana

K-B= Kankakee-Bradley

D-RI-M=Davenport-Rock Island-Moline