


Illinois Job Index

Release 4/20/2009	Data Jan 1990 / Mar 2009	Issue 2009.4	www.real.uiuc.edu
----------------------	-----------------------------	-----------------	-------------------

For the April 2009 Illinois Job Index, a negative rating has been applied. Illinois, RMW and US all lost jobs in March 2009. Illinois job loss rate was larger than Nation and RMW this month.

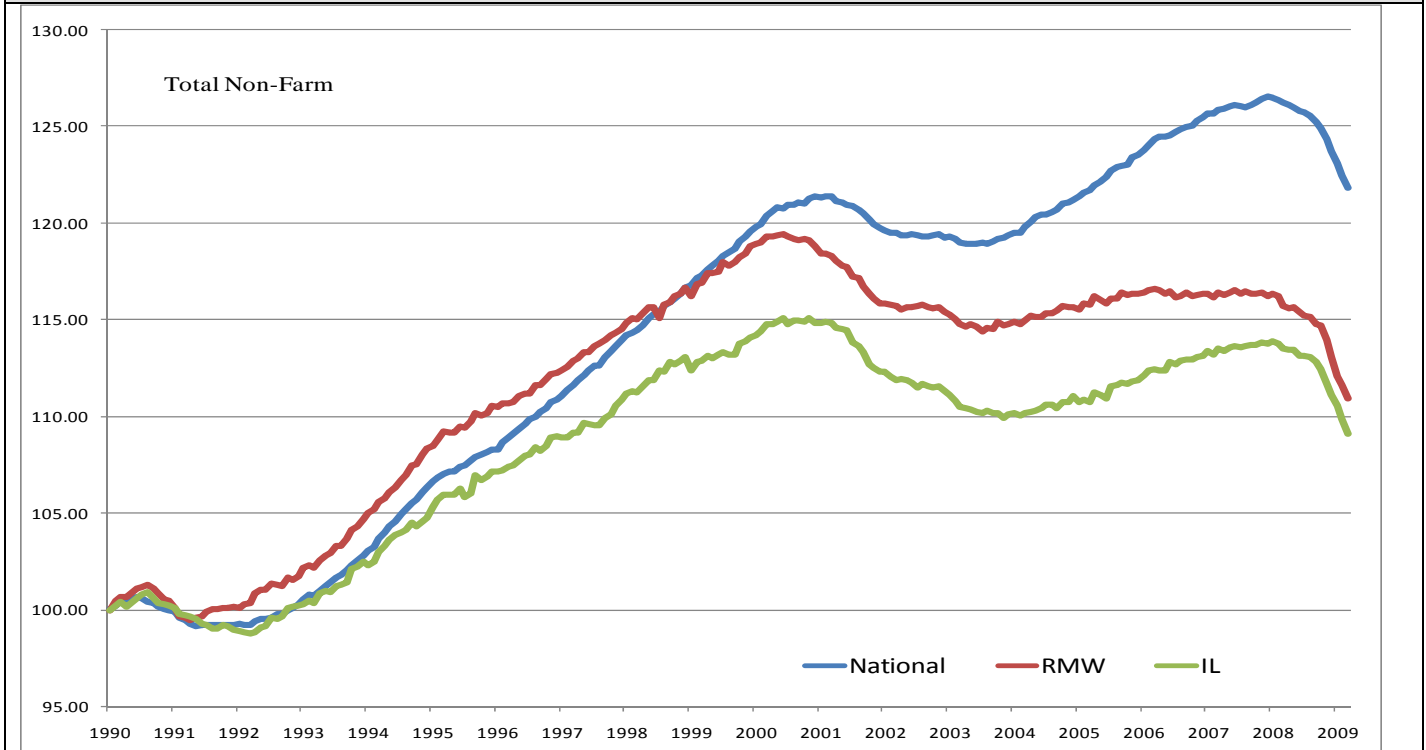
The monthly Illinois Job Index and MSA Report are issued monthly as tools for elected officials, policy leaders and the public. The objective is to enhance the understanding of the Illinois economy and business climate by comparing and measuring Illinois employment growth rates against those of the Rest of the Midwest (RMW: Indiana, Iowa, Michigan, Missouri, Ohio and Wisconsin) and the Nation. Data and analysis is provided by the Illinois Economic Observatory / Regional Economics Applications Laboratory, University of Illinois.

	April 2009 Negative		Feb 2009 - Mar 2009		Last 12 months		Mar 2009
		Total non-farm employment	Growth Rate %	Number of Jobs	Growth Rate%	Number of Jobs	Shadow U.R. *
		Nation	-0.50	-663,000	-3.48	-4,795,000	10.1%
		RMW	-0.62	-118,600	-4.16	-822,900	12.4%
		Illinois	-0.68	-39,600	-3.89	-232,600	11.6%

*REAL has estimated a *shadow unemployment rate*; this is calculated as the unemployment rate that would be observed if labor force participation rates matched the average for the 15-year period from 1990 to 2004.

Talking Points	
Illinois Notes	<ul style="list-style-type: none"> ▪ Illinois lost 39,600 jobs at a rate of -0.68% March 2009, compare to a revised 36,300 job loss in February. ▪ Illinois, RMW, and the nation all lost jobs in March, but the job loss rate in Illinois was the largest. ▪ Since the beginning of the recession in Dec 2007, Illinois has posted negative job changes 15 times, and the state has lost 249,700 jobs in this recession. 210,500 jobs (84.3%) have been lost since Sep 2008. ▪ Through 2008, Illinois lost -11,808 jobs at a rate of -0.20% on average per month. However, the average monthly loss for the first quarter of 2009 is 35,167 jobs at a rate of -0.60%. ▪ Over the last 12 months, Illinois payroll growth was -3.89%, worse than the -3.48% growth of the nation. RMW continued with a negative rating (-4.16%) and has recorded a negative rate for 13 months in a row. ▪ Through March 2009, the cumulative job growth for Illinois, RMW and the Nation compared to January 1900 stood at 9.09%, 10.93%, and 21.87%, respectively. ▪ The shadow unemployment rates for the Illinois, RMW and the Nation are 11.6%, 12.4% and 10.1%, compared to 9.1%, 9.7% and 8.5% official unemployment rates for Illinois, RMW and Nation.
Nation Notes	<ul style="list-style-type: none"> ▪ The nation lost 663,000 jobs in March, up from a revised 651,000 job loss in February, but better than 741,000 job loss in January. Job loss in the first quarter was over two million. ▪ Since the last employment peak in December 2007, the nation has lost 5,133,000 jobs. However, for RMW and Illinois, they have not yet recovered from their respective peaks in 2000. ▪ Since January 2008, the nation has posted negative growth for 15 months in a row with average growth rate -0.25%; the average growth rate for 2007 was 0.07%.

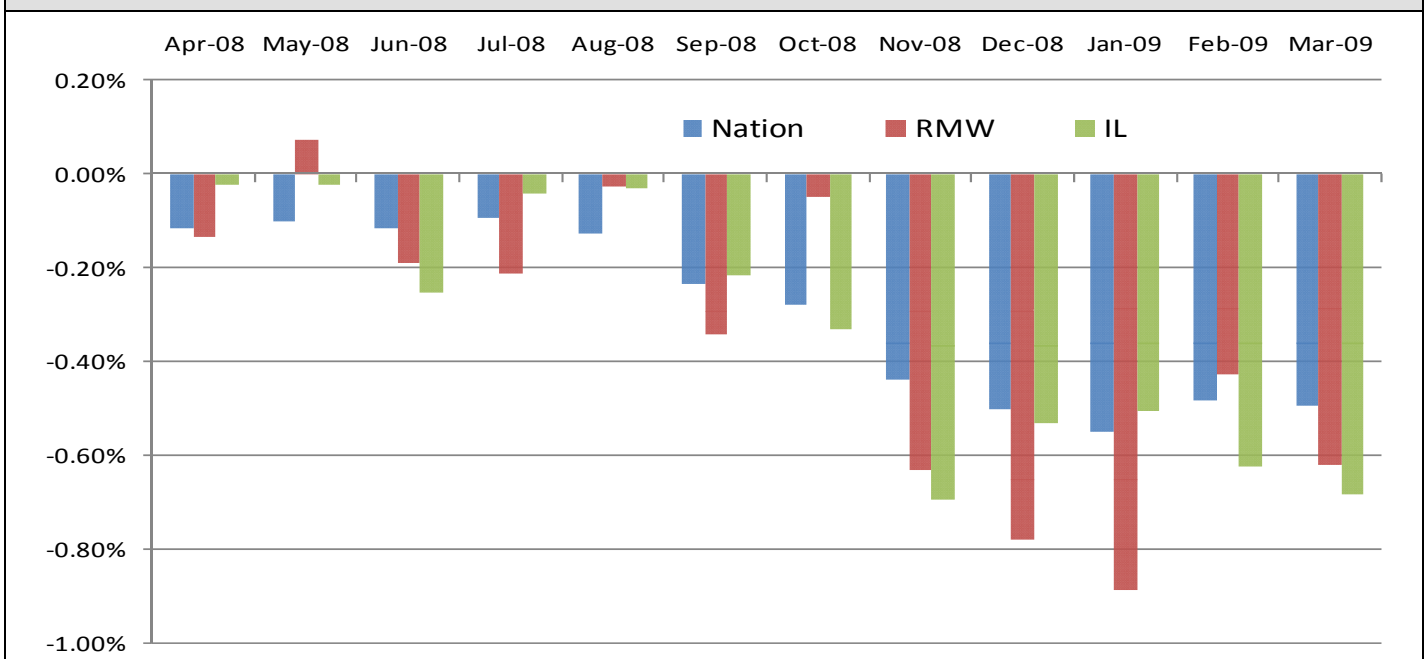
Total Non-farm Employment growth rate Jan 1990 – Mar 2009



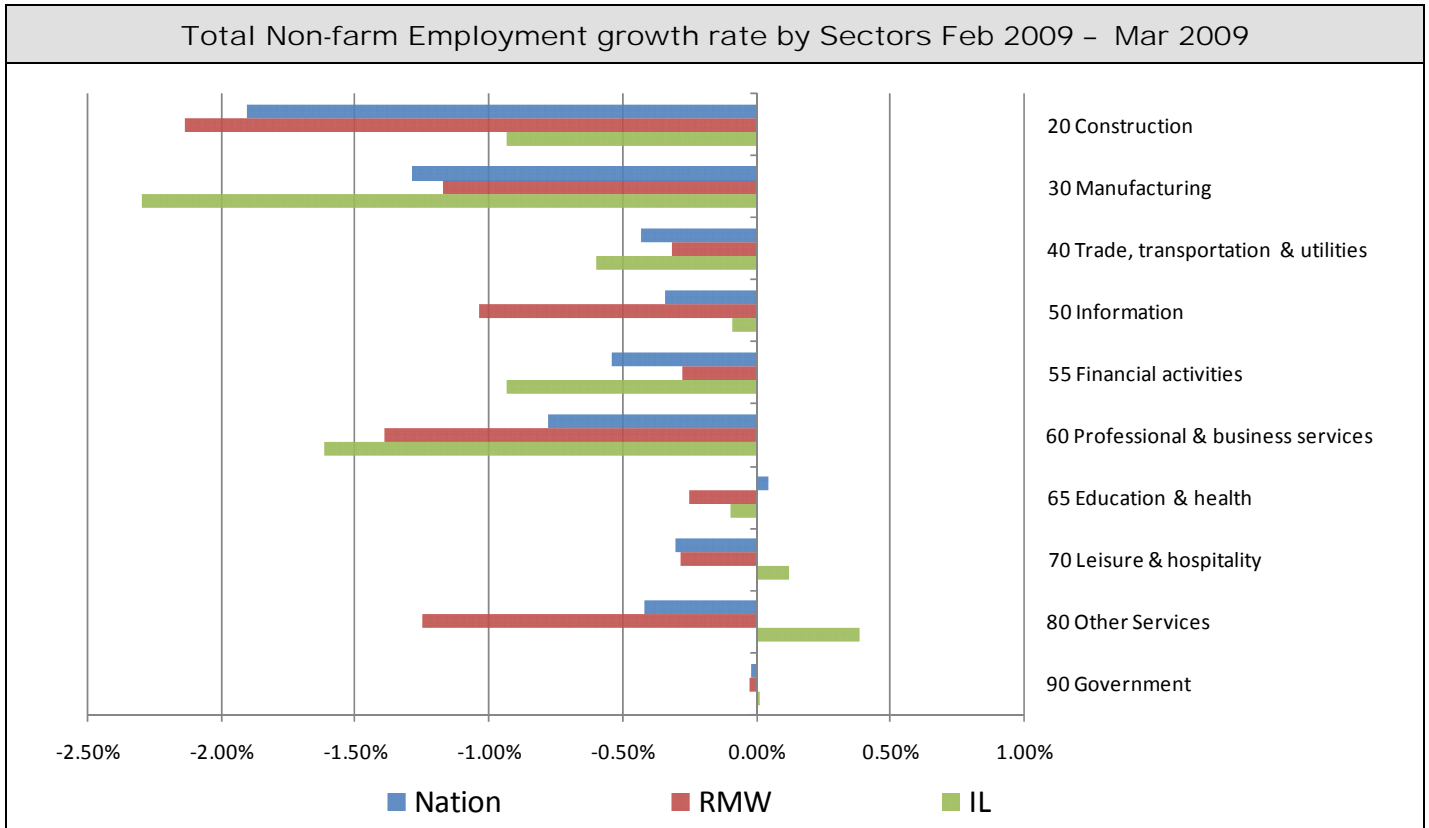
Total Non-farm Employment and Employment Index

	March 2009 Number of Jobs	Current Index to Jan 1990	Previous Peak Index to Jan 1990	Changes in Jobs since Jan 1990	Changes in Jobs since Previous Peak
Nation	133,019,000	121.87	126.57 (Dec-2007)	23,868,000	-5,133,000
RMW	18,949,700	110.93	119.44 (Jun-2000)	1,866,700	-1,456,900
Illinois	5,744,000	109.09	115.08 (Nov-2000)	478,400	-315,400

Last 12 months Total Non-farm Employment growth rate Mar 2008 – Mar 2009

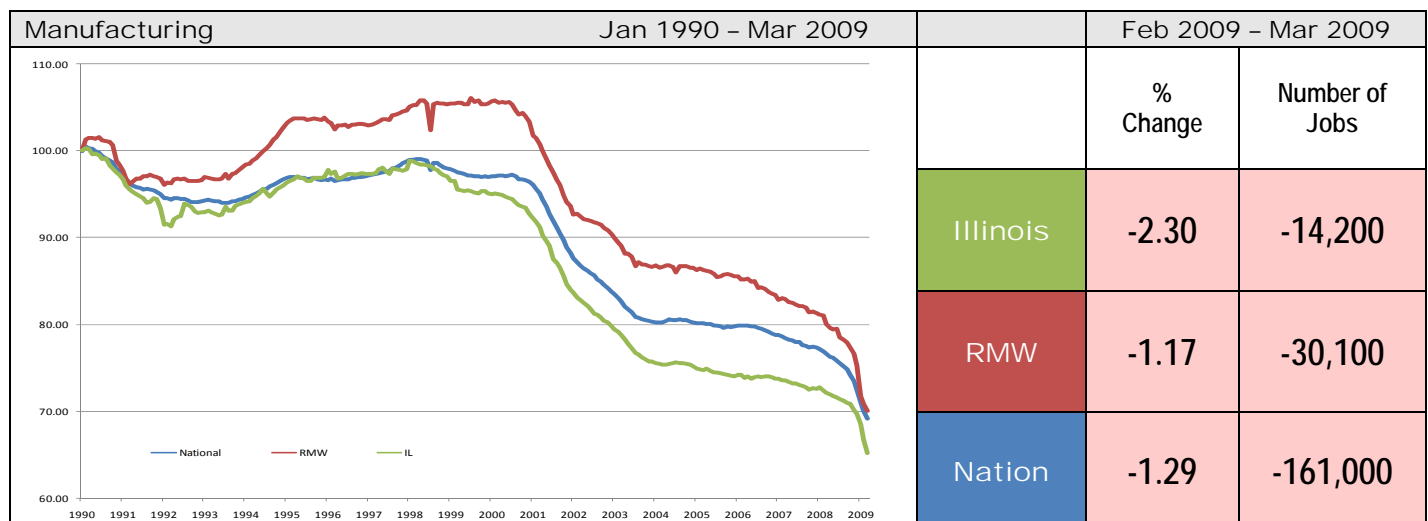
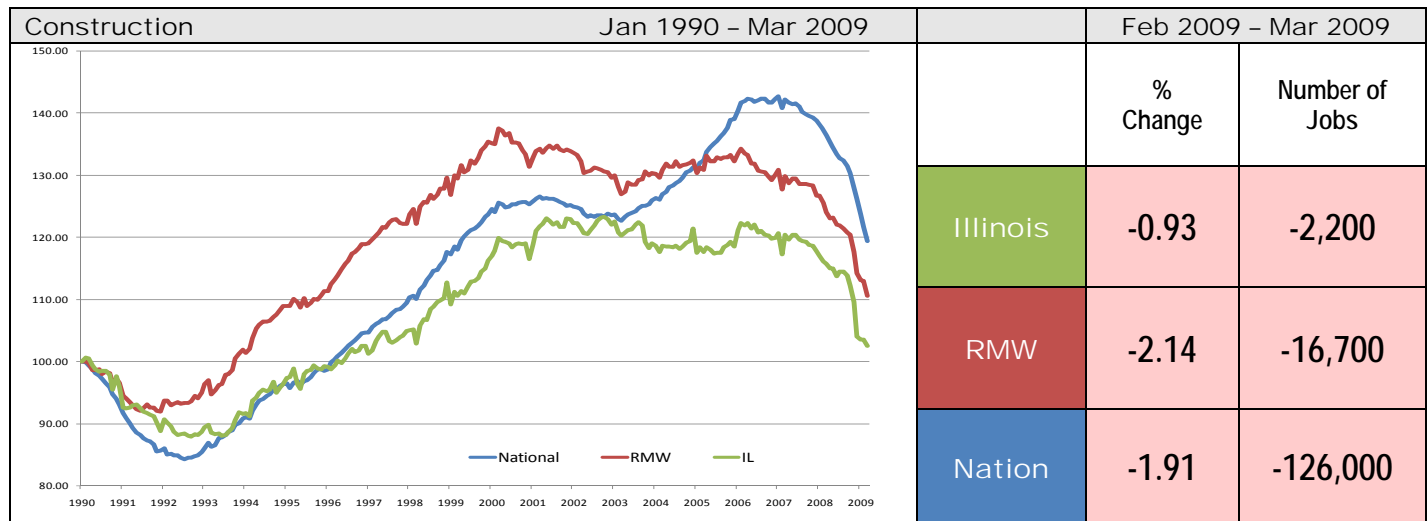


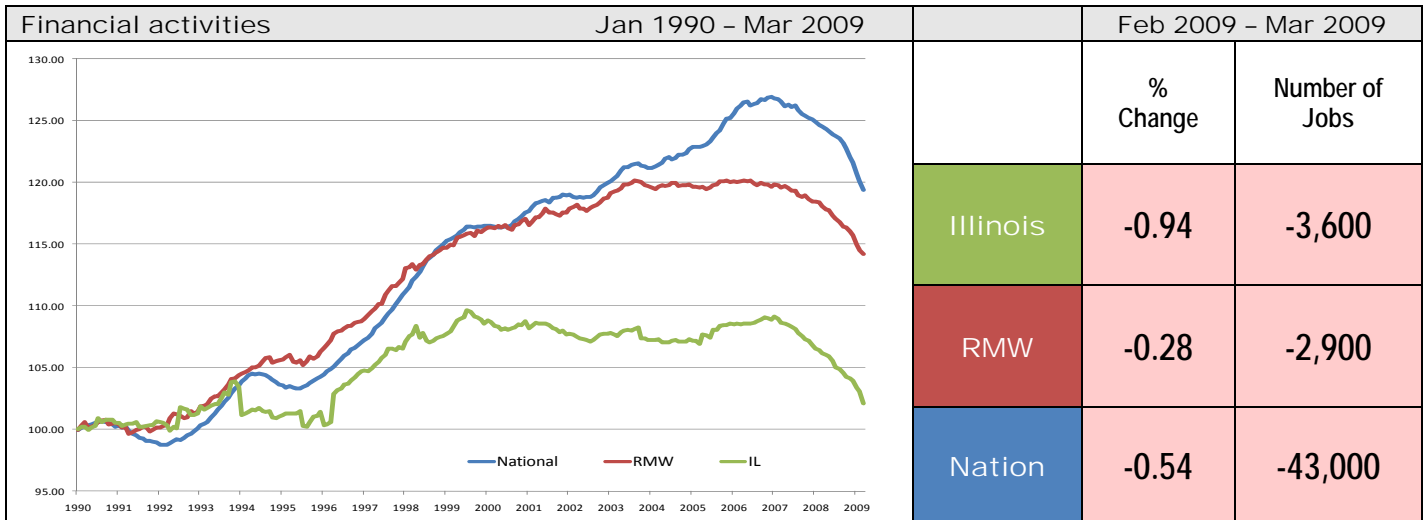
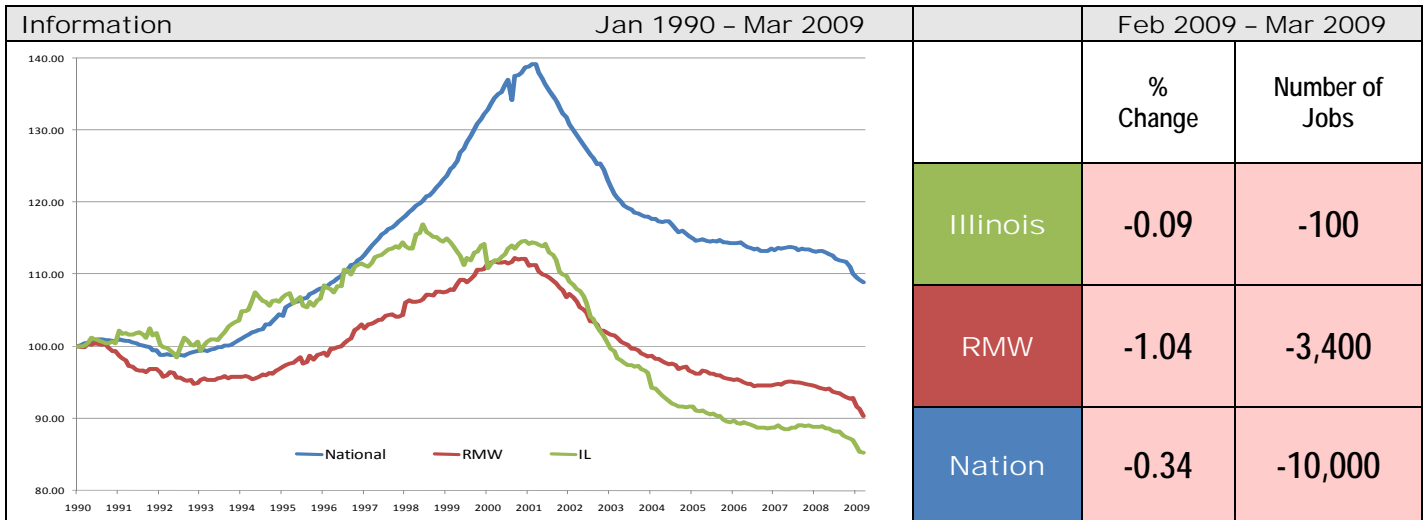
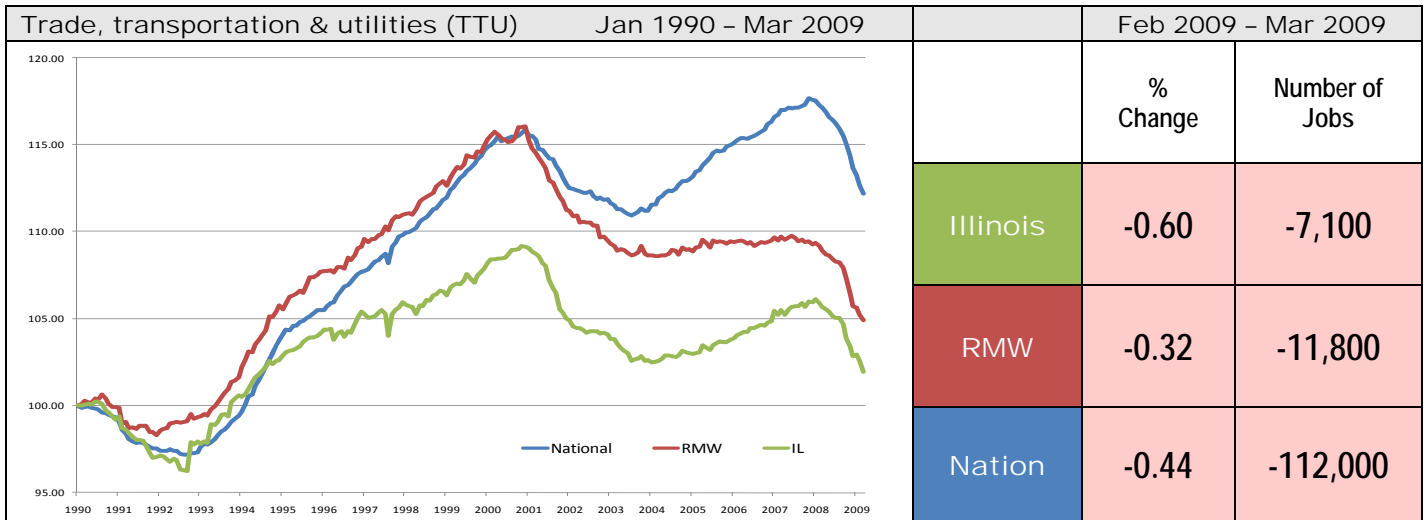
By employment sector:

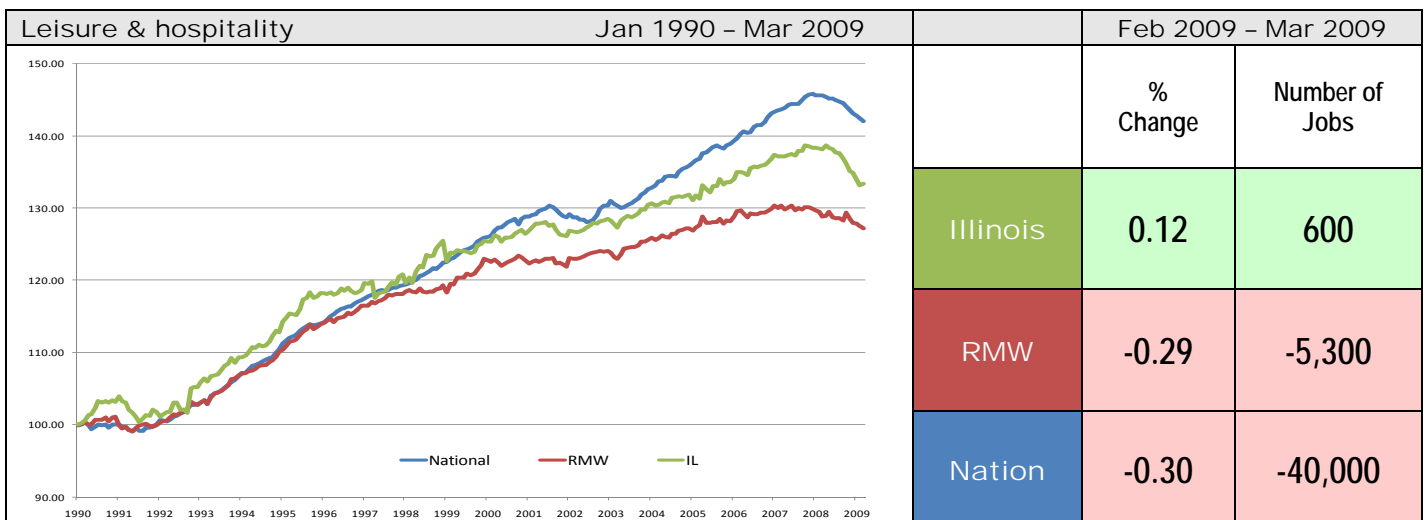
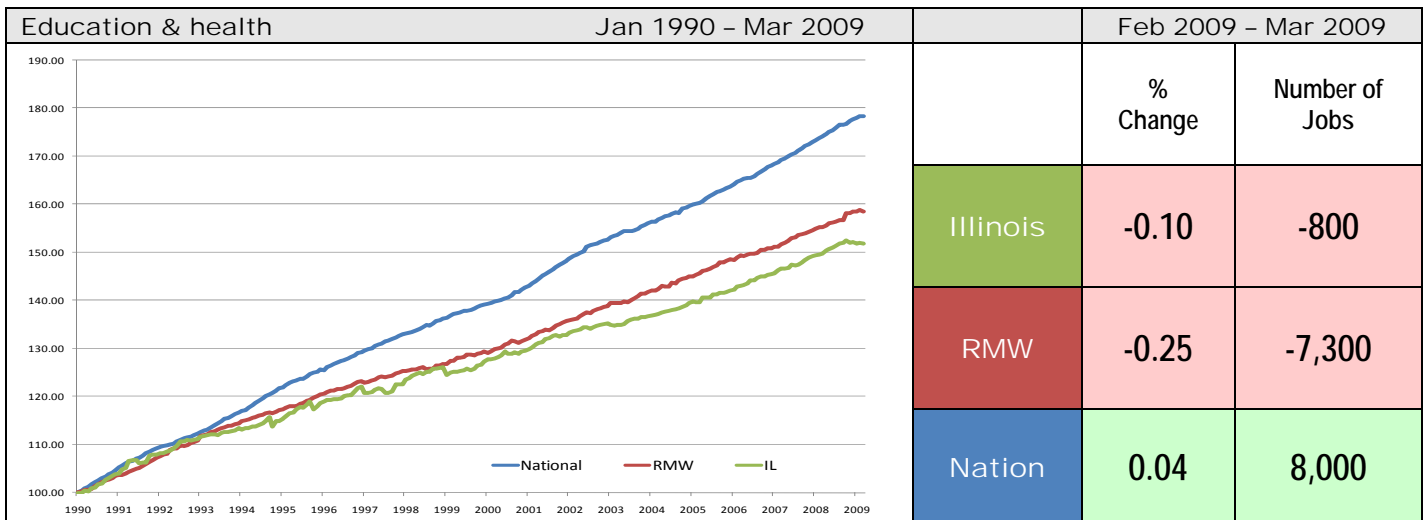
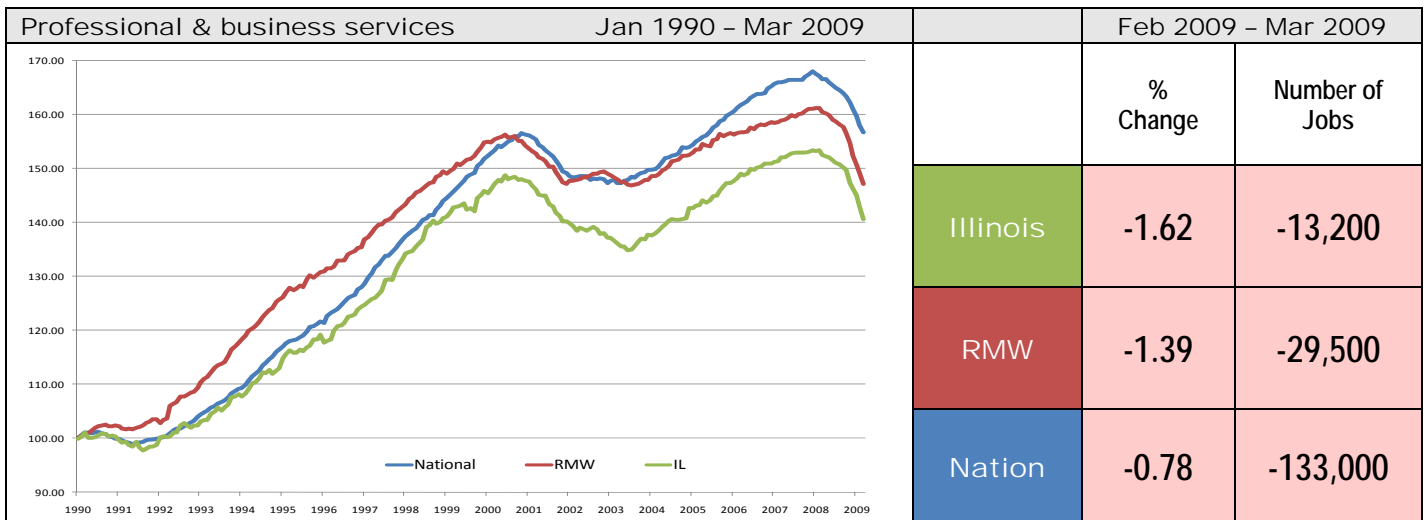


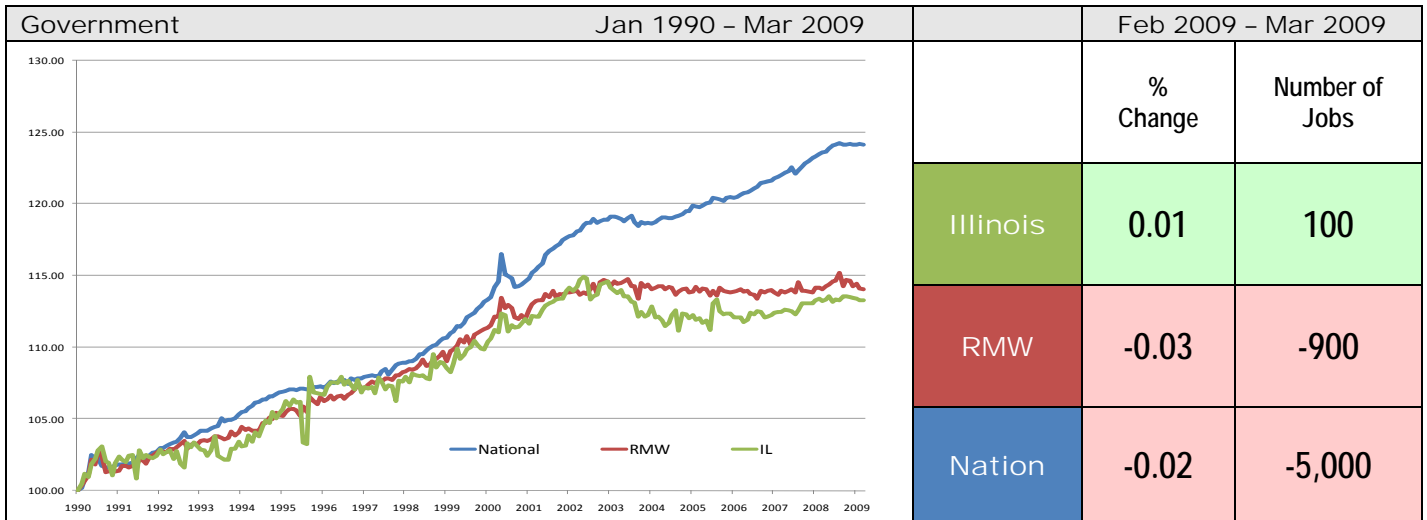
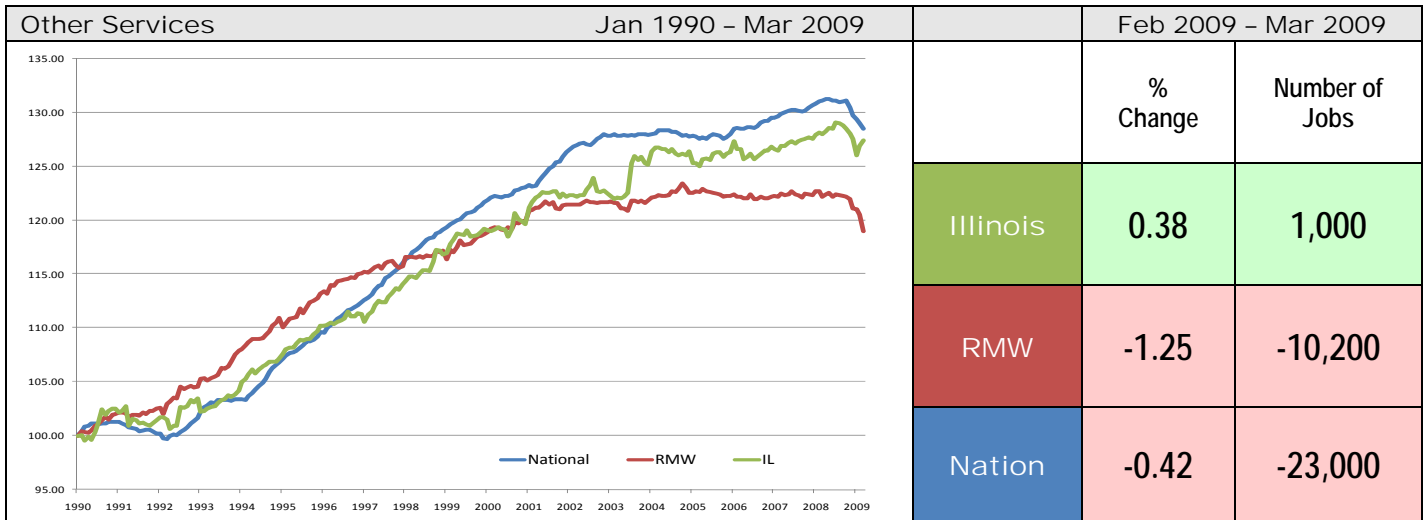
Sector notes	<ul style="list-style-type: none"> ▪ Illinois posted a job decline of -0.68% in March 2009. Seven out of ten sectors recorded net losses. Compared to February 2009, relative performance gains were recorded for Information (-0.98% to -0.09%), Leisure & hospitality (-0.54% to 0.12%), and Manufacturing (-2.59% to -2.30%), whereas Construction (-0.04% to -0.93%), Financial activities (-0.29% to -0.94%) and Other Services (0.73% to 0.38%) faced major losses in performance. ▪ In March, notable gains at the national level were recorded for the following sectors: <ul style="list-style-type: none"> ○ Education and Health Services: 8,000 (0.04%) ▪ Major losses at the national level in March were: <ul style="list-style-type: none"> ○ Manufacturing: -161,000 (-1.29%) ○ Professional & business services: -133,000 (-0.78%) ○ Construction: -126,000 (-1.91%) ▪ For Illinois, three sectors posted job gains in March <ul style="list-style-type: none"> ○ Other services: 1,000 (0.38%) ○ Leisure & hospitality: 600 (0.12%) ○ Government: 100 (0.01%) ▪ Following are the major sectors that lost jobs in March in Illinois: <ul style="list-style-type: none"> ○ Manufacturing: -14,200 (-2.30%) ○ Professional & business services: -13,200 (-1.62%) ○ Trade transportation & utilities: -7,100 (-0.60%) ▪ For Illinois, in terms of 12-months aggregated account, Construction, Manufacturing, Trade, transportation & utilities, Information, Financial activities, Professional & business services, Leisure and Hospitality, and Other Services all recorded net losses. Education & health services and Government were the only two positive contributors.
--------------	--

Total Non-farm Employment growth rate by sector Jan 1990 - Mar 2009						
	Illinois				RMW	Nation
	vs. RMW	vs. Nation	Number of Jobs	Rate %	Rate %	Rate %
Construction	-	-	5,800	2.55	10.55	19.38
Manufacturing	-	-	-321,200	-34.78	-29.90	-30.84
Trade, transportation & utilities (TTU)	-	-	22,200	1.93	4.90	12.20
Information	-	-	-19,300	-14.78	-9.60	8.88
Financial activities	-	-	7,900	2.12	14.21	19.41
Professional & business services	-	-	232,200	40.68	47.04	56.75
Education & health	-	-	274,000	51.79	58.43	78.30
Leisure & hospitality	+	-	128,600	33.32	27.24	42.09
Other Services	+	-	56,300	27.41	18.95	28.52
Government	-	-	100,000	13.26	14.04	24.17









ABOUT: The Regional Economics Applications Laboratory (REAL) is a unit of the Institute of Government and Public Affairs of the University of Illinois. REAL undertakes impact and forecasting analyses of the Illinois and several Midwestern economies and is also engaged in similar analysis in several other countries including Brazil, Chile, Colombia, Japan. More information can be found at www.real.uiuc.edu.