


Illinois Job Index

Release 3/30/2009	Data Jan 1990 / Feb 2009	Issue 2009.3	www.real.uiuc.edu
----------------------	-----------------------------	-----------------	-------------------

For the March 2009 Illinois Job Index, a negative rating has been applied. Illinois, RMW and US all lost jobs in February 2009. Illinois job loss rate is bigger than Nation and RMW this month.

The monthly Illinois Job Index and MSA Report are issued monthly as tools for elected officials, policy leaders and the public. The objective is to enhance the understanding of the Illinois economy and business climate by comparing and measuring Illinois employment growth rates against those of the Rest of the Midwest (RMW: Indiana, Iowa, Michigan, Missouri, Ohio and Wisconsin) and the Nation. Data and analysis is provided by the Illinois Economic Observatory / Regional Economics Applications Laboratory, University of Illinois.

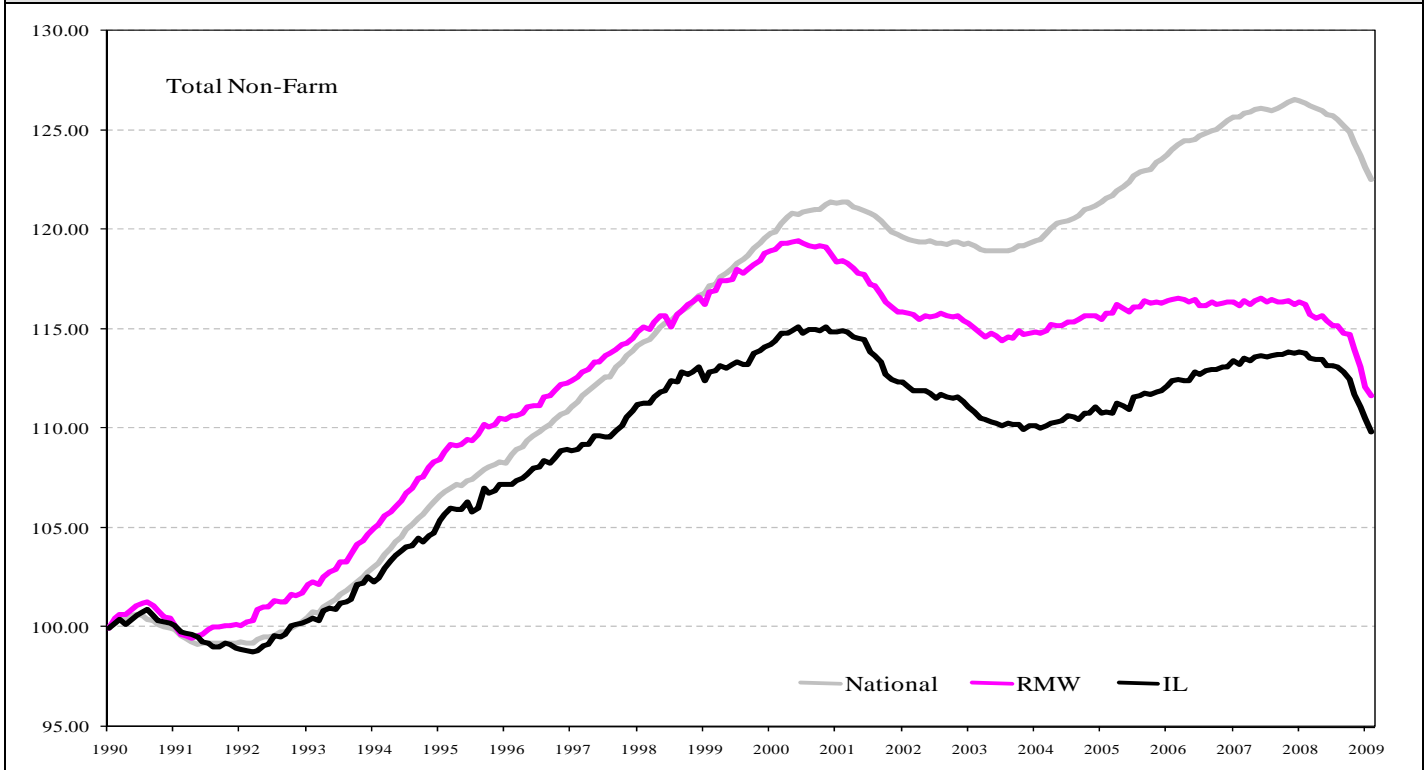
	March 2009 Negative		Jan 2009 - Feb 2009		Last 12 months		Feb 2009
		Total non-farm employment	Growth Rate %	Number of Jobs	Growth Rate%	Number of Jobs	Shadow U.R. *
		Nation	-0.48	-651,000	-3.02	-4,168,000	9.4%
		RMW	-0.40	-77,400	-3.94	-782,500	11.6%
		Illinois	-0.64	-37,200	-3.44	-206,300	10.8%

*REAL has estimated a *shadow unemployment rate*; this is calculated as the unemployment rate that would be observed if labor force participation rates matched the average for the 15-year period from 1990 to 2004.

Talking Points

Illinois Notes	<ul style="list-style-type: none"> ▪ Illinois lost 37,200 jobs at a rate of -0.64% February 2009, compare to a revised 29,600 job loss in January. ▪ Illinois, RMW, and the nation all lost jobs in February. ▪ Since the beginning of the recession in Dec 2007, Illinois has posted negative job changes fourteen times, and the state has lost 211,000 jobs in this recession. 171,800 jobs (81.4%) have been lost since Sep 2008. ▪ Through 2008, Illinois lost -11,808 jobs at a rate of -0.20% on average per month. This is the worst year since 1990; the second worst year was 2001 with average monthly loss of -10,908 jobs at a rate of -0.18%. ▪ Over the last 12 months, Illinois payroll growth was -3.44%, worse than the -3.02% growth of the nation. RMW continued with a negative rating (-3.94%) and has negative rate for 12 months in a row. ▪ On average, Illinois has lost 33,400 jobs per month in 2009, compared to 11,808 monthly job loss in 2008. ▪ Through February 2009, the cumulative job growth for Illinois, RMW and the Nation compared to January 1900 stood at 9.82%, 11.65%, and 22.55%, respectively. ▪ The shadow unemployment rates for the Illinois, RMW and the Nation are 10.8%, 11.6% and 9.4%, compared to 8.6%, 9.3% and 8.1% official unemployment rates for Illinois, RMW and Nation.
Nation Notes	<ul style="list-style-type: none"> ▪ The nation lost 651,000 jobs in February, down from a revised 655,000 job loss in January. Last December job loss also revised to 681,000, the largest single month loss in 59 years. ▪ Since the last employment peak in December 2007, the nation has lost 4,384,000 jobs. However, for RMW and Illinois, they have not yet recovered from their respective peaks in 2000. ▪ Since January 2008, the nation has posted negative growth for 14 months in a row with average growth rate -0.23%; the average growth rate for 2007 was 0.07%.

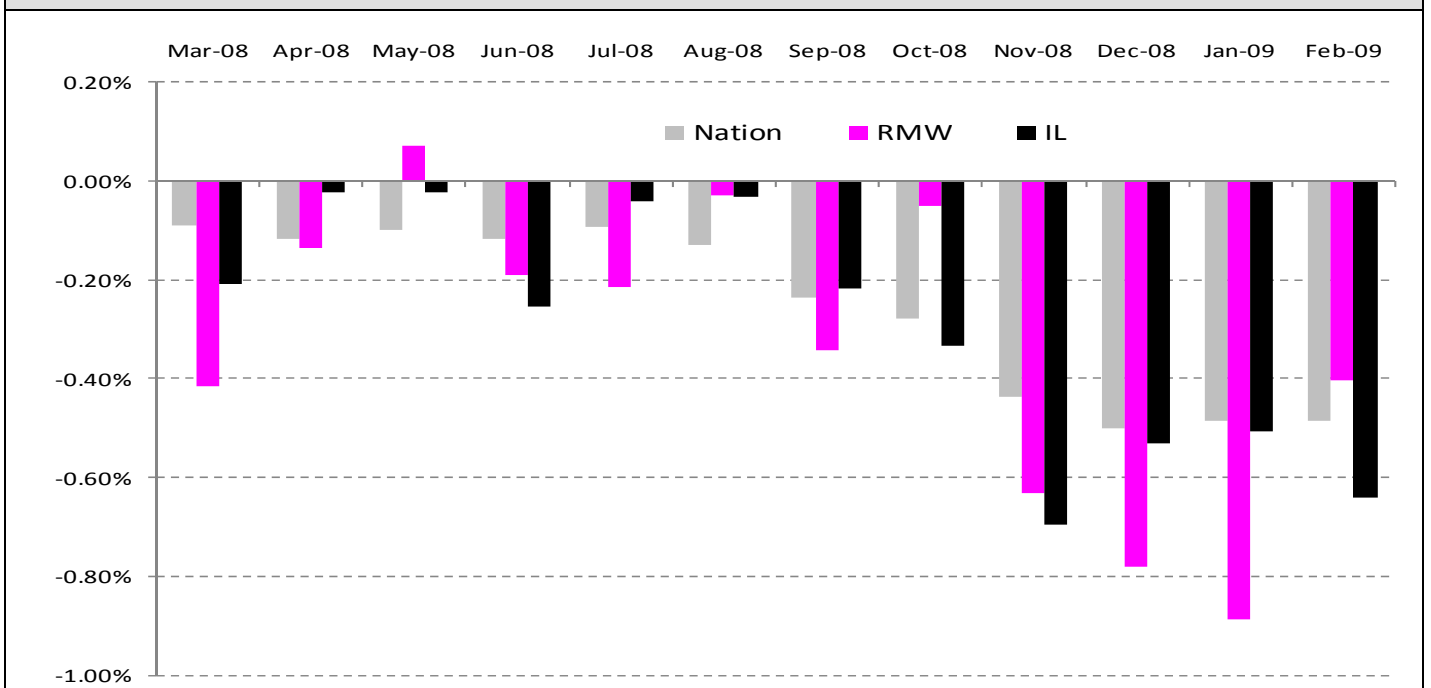
Total Non-farm Employment growth rate Jan 1990 – Feb 2009



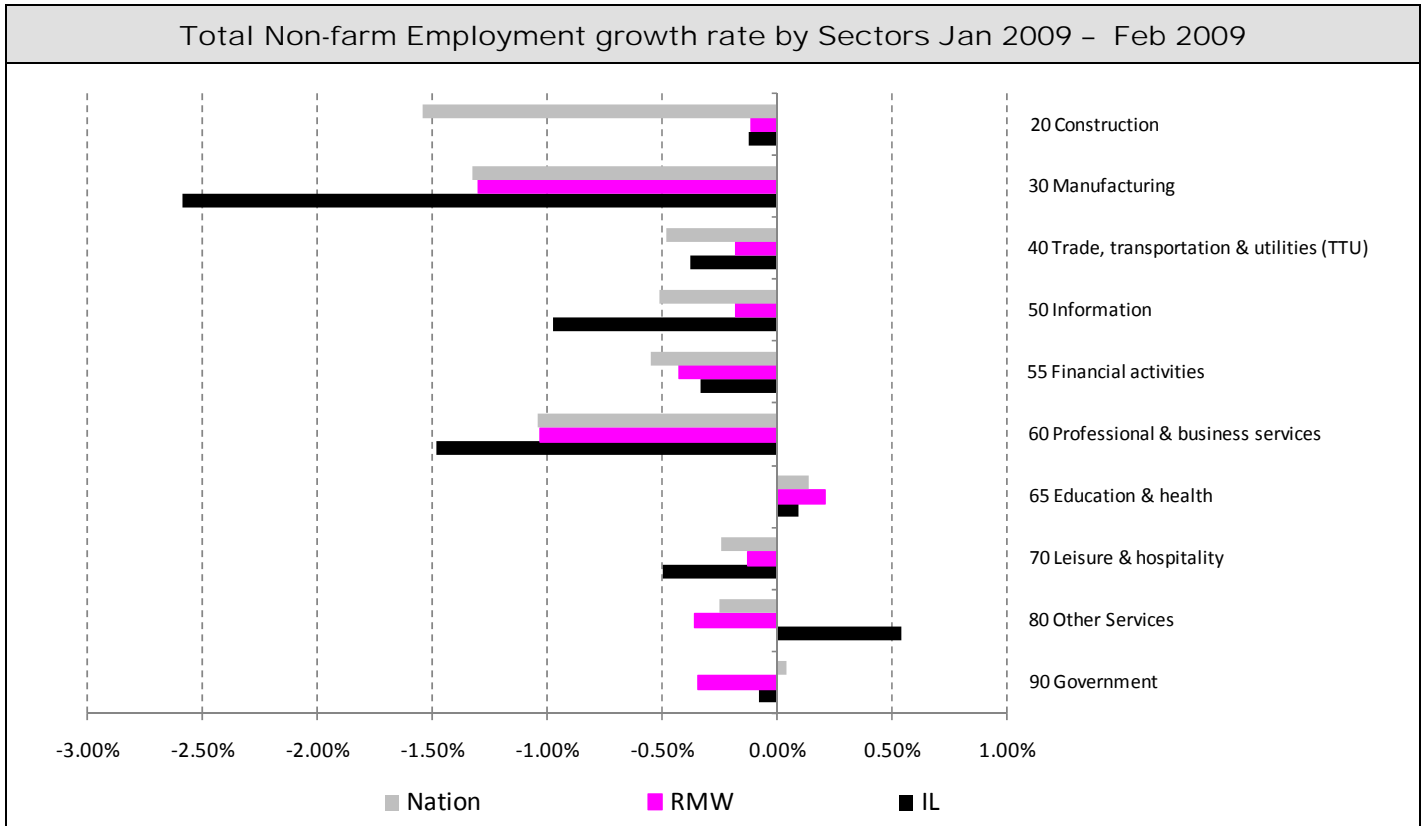
Total Non-farm Employment and Employment Index

	February 2009 Number of Jobs	Current Index to Jan 1990	Previous Peak Index to Jan 1990	Changes in Jobs since Jan 1990	Changes in Jobs since Pervious Peak
Nation	133,768,000	122.55	126.57 (Dec-2007)	24,617,000	-4,384,000
RMW	19,072,800	111.65	119.44 (Jun-2000)	1,989,800	-1,333,800
Illinois	5,782,700	109.82	115.08 (Nov-2000)	517,100	-276,700

Last 12 months Total Non-farm Employment growth rate Feb 2008 – Feb 2009

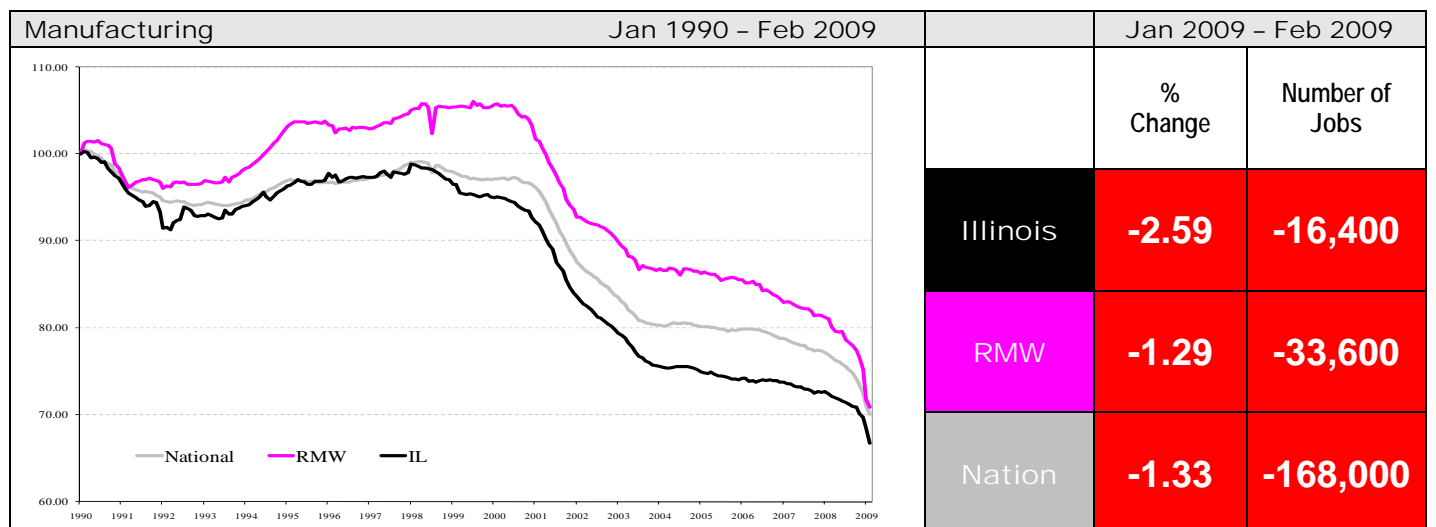
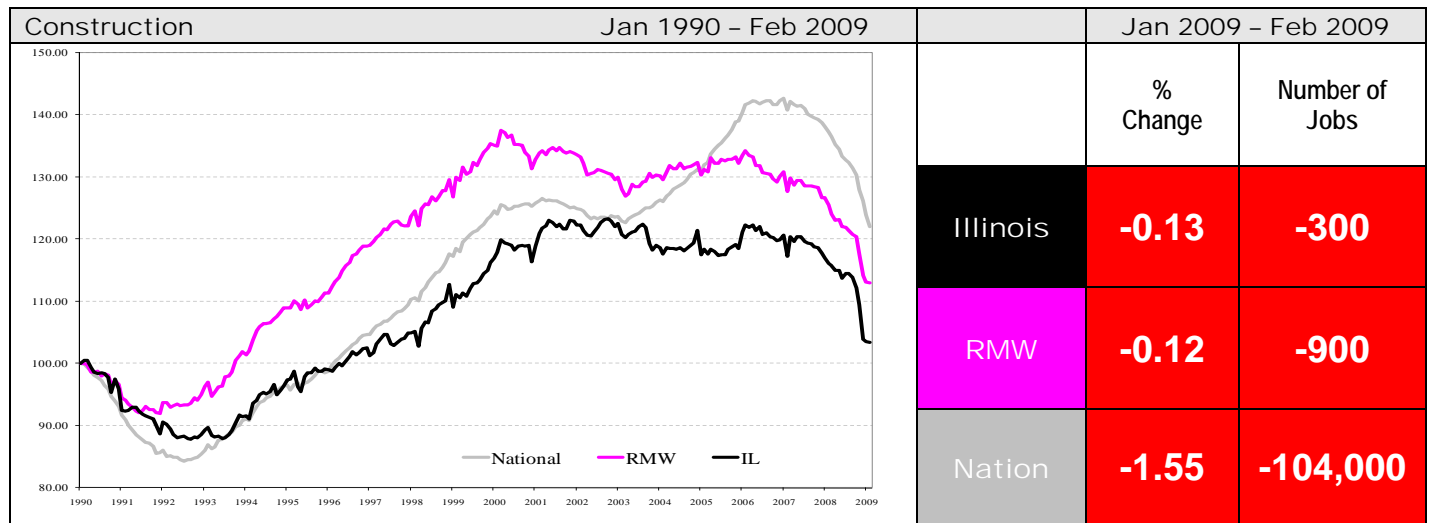


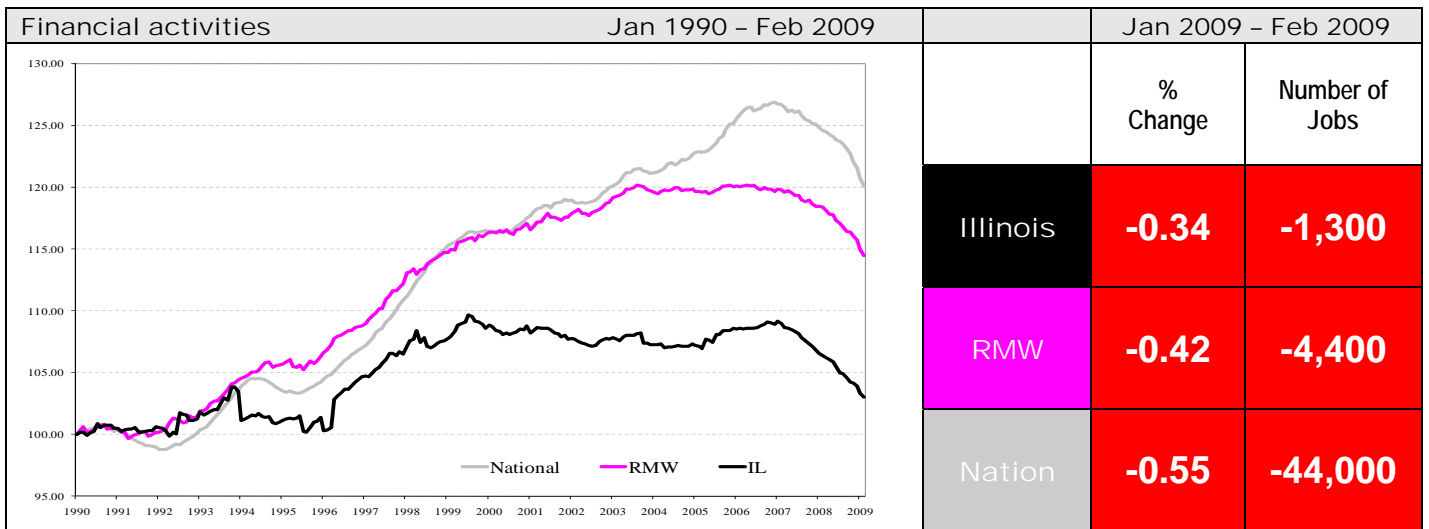
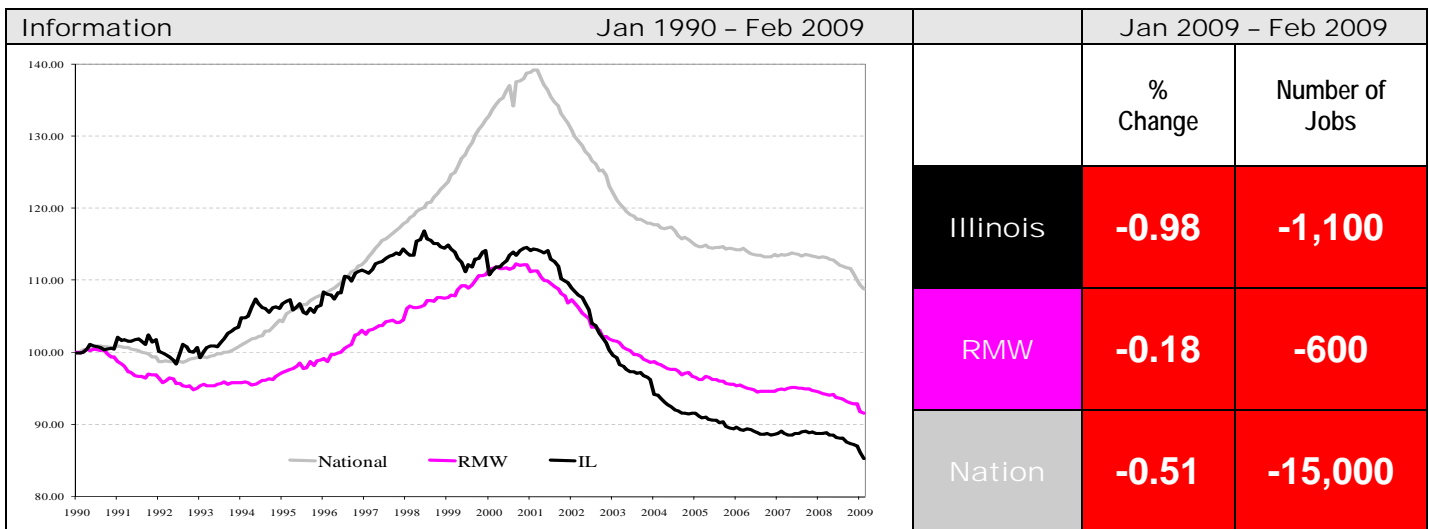
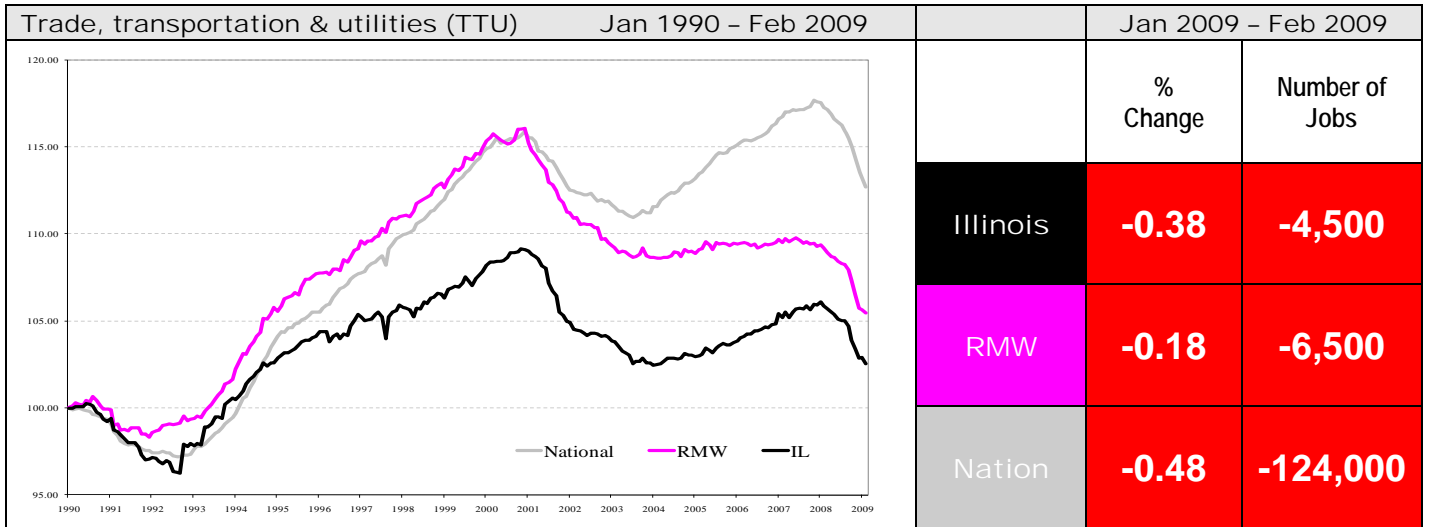
By employment sector:

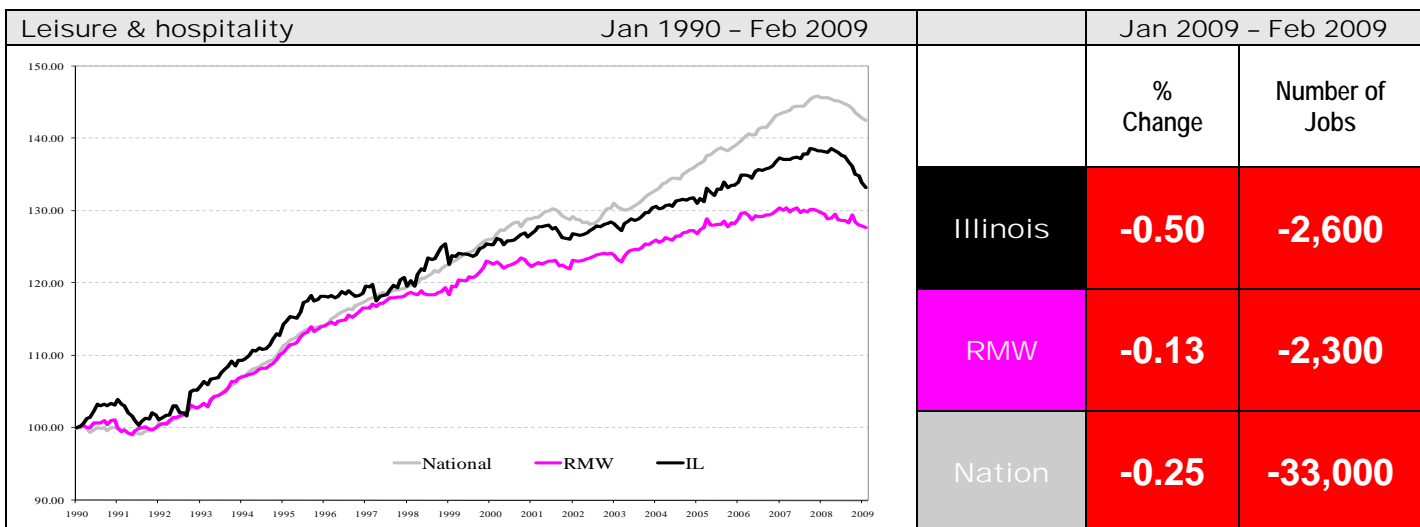
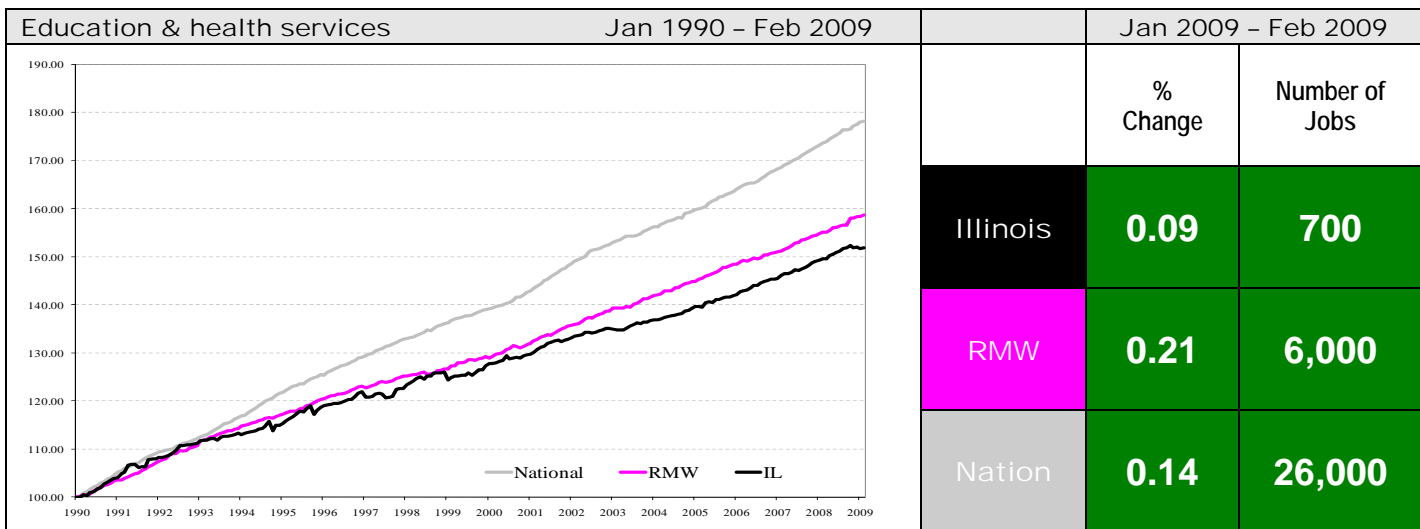
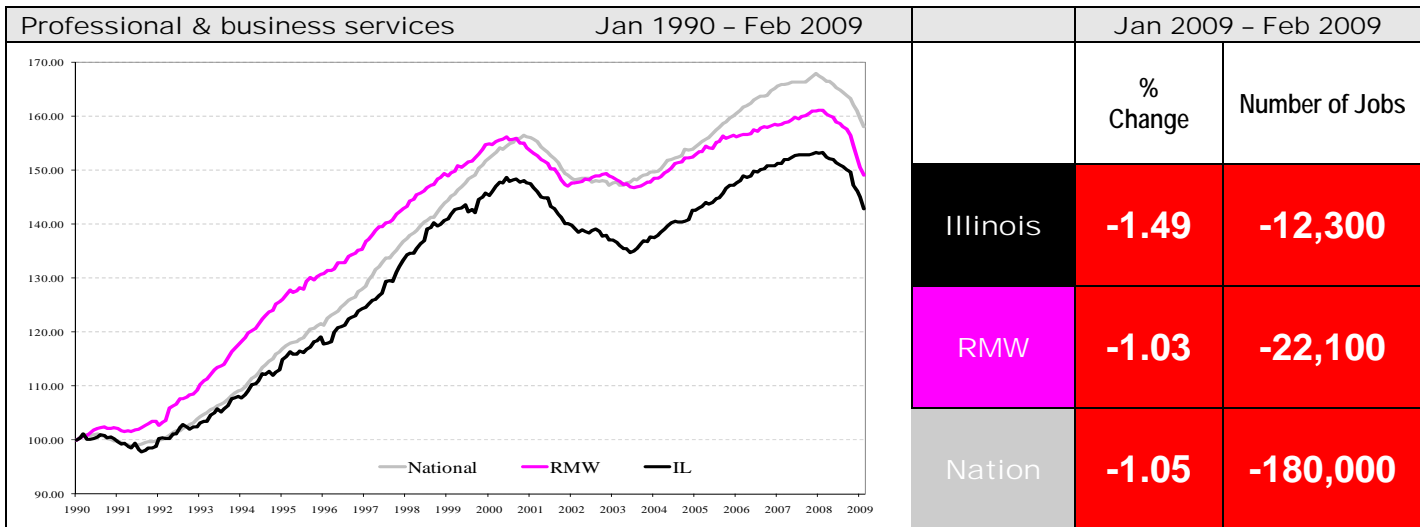


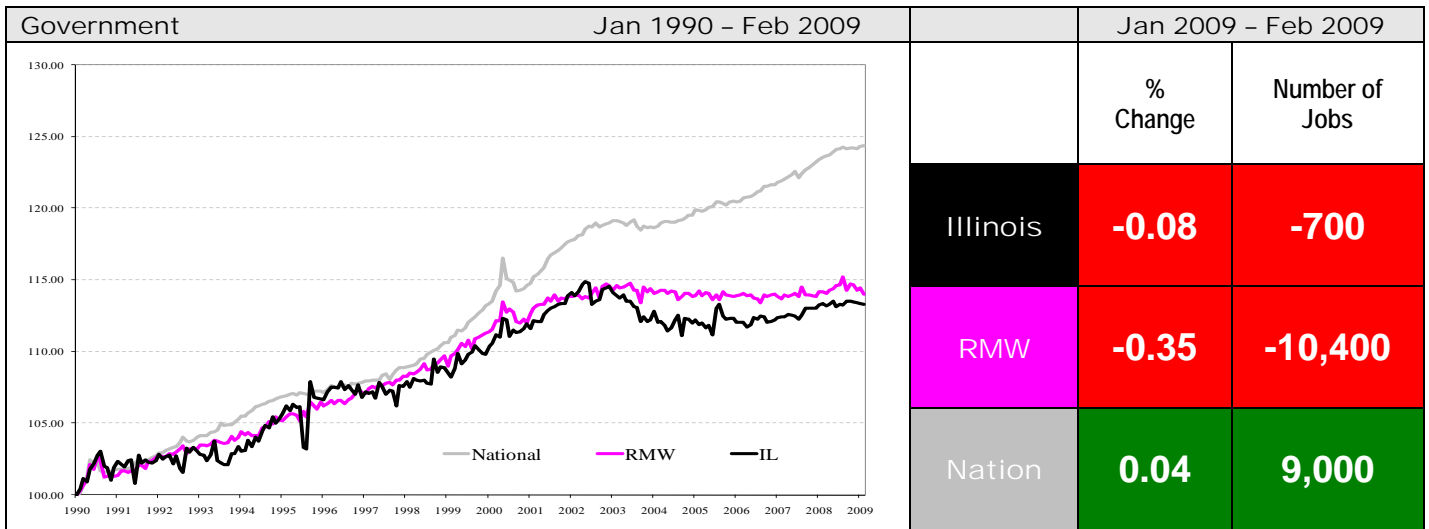
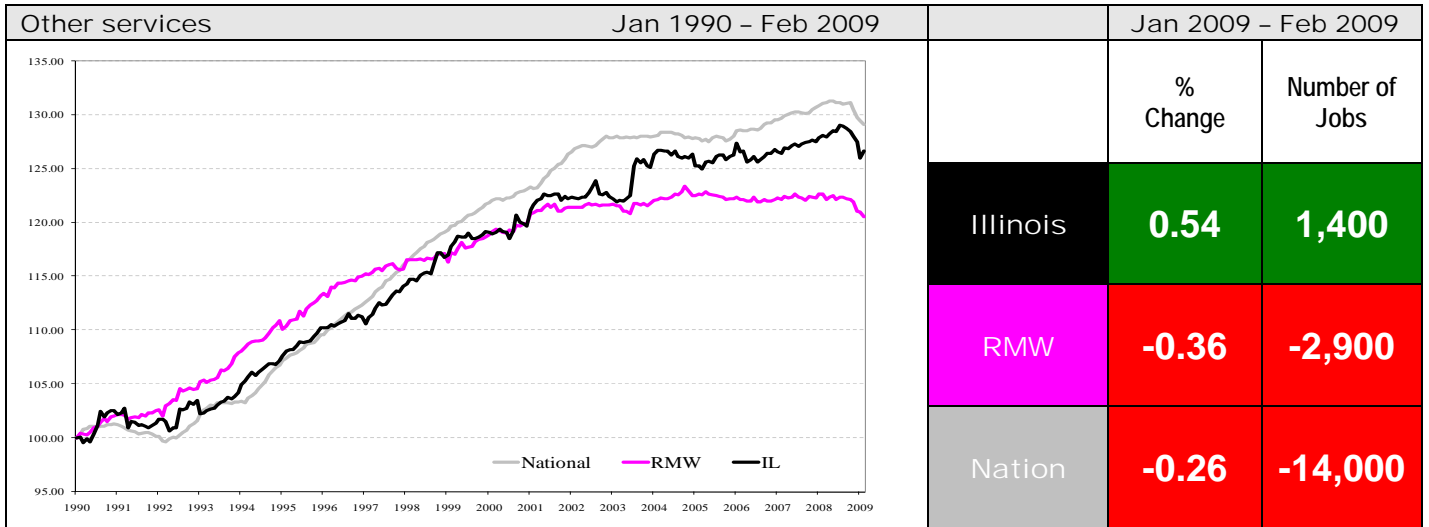
Sector notes	<ul style="list-style-type: none"> ▪ Illinois posted a job decline of -0.64% in February 2009. Eight out of ten sectors recorded net losses. Compared to January 2009, relative performance gains were recorded for Other Services (-1.18% to 0.54%), Education & health (-0.20% to 0.09%), and Construction (-0.38% to -0.12%), whereas Manufacturing (-1.68% to -2.59%), Trade, transportation & utilities (0.08% to -0.38%), and Professional & business services (-0.84% to -1.49%) faced major losses in performance. ▪ In February, notable gains at the national level were recorded for the following sectors: <ul style="list-style-type: none"> ○ Education and Health Services: 26,000 (0.14%) ○ Government: 9,000 (0.04%) ▪ Major losses at the national level in February were: <ul style="list-style-type: none"> ○ Professional & business services: -180,000 (-1.05%) ○ Manufacturing: -168,000 (-1.33%) ○ Trade transportation & utilities: -124,000 (-0.48%) ▪ For Illinois, two sectors posted job gains in February <ul style="list-style-type: none"> ○ Education and Health Services: 700 (0.09%) ○ Other services: 1,400 (0.54%) ▪ Following are the major sectors that lost jobs in February in Illinois: <ul style="list-style-type: none"> ○ Manufacturing: -16,400 (-2.59%) ○ Professional & business services: -12,300 (-1.49%) ○ Trade transportation & utilities: -4,500 (-0.38%) ▪ For Illinois, in terms of 12-months aggregated account, Construction, Manufacturing, Trade, transportation & utilities, Information, Financial activities, Professional & business services, Leisure and Hospitality, Other Services, and Government all recorded net losses. Education & health services were the only positive contributors.
--------------	--

Total Non-farm Employment growth rate by sector Jan 1990 - Feb 2009						
	Illinois				RMW	Nation
	vs. RMW	vs. Nation	Number of Jobs	Rate %	Rate %	Rate %
Construction	-	-	7,800	3.43	12.92	22.08
Manufacturing	-	-	-307,000	-33.24	-29.16	-29.90
Trade, transportation & utilities (TTU)	-	-	29,100	2.54	5.46	12.70
Information	-	-	-19,200	-14.70	-8.43	8.84
Financial activities	-	-	11,300	3.03	14.50	20.13
Professional & business services	-	-	244,800	42.89	49.06	58.12
Education & health	-	-	275,100	51.99	58.80	78.30
Leisure & hospitality	+	-	128,200	33.21	27.73	42.54
Other Services	+	-	54,800	26.68	20.59	29.14
Government	-	-	100,200	13.29	14.01	24.36









ABOUT: The Regional Economics Applications Laboratory (REAL) is a unit of the Institute of Government and Public Affairs of the University of Illinois. REAL undertakes impact and forecasting analyses of the Illinois and several Midwestern economies and is also engaged in similar analysis in several other countries including Brazil, Chile, Colombia, Japan. More information can be found at www.real.uiuc.edu.