


# Illinois Job Index

Release 5/25/2009	Data Jan 1990 / Apr 2009	Issue 2009.5	www.real.uiuc.edu
----------------------	-----------------------------	-----------------	-------------------

**For the May 2009 Illinois Job Index, a negative rating has been applied. Illinois, RMW and US all lost jobs in March 2009. However, the job loss rates for Illinois, RMW and Nation were smaller than last month, respectively.**

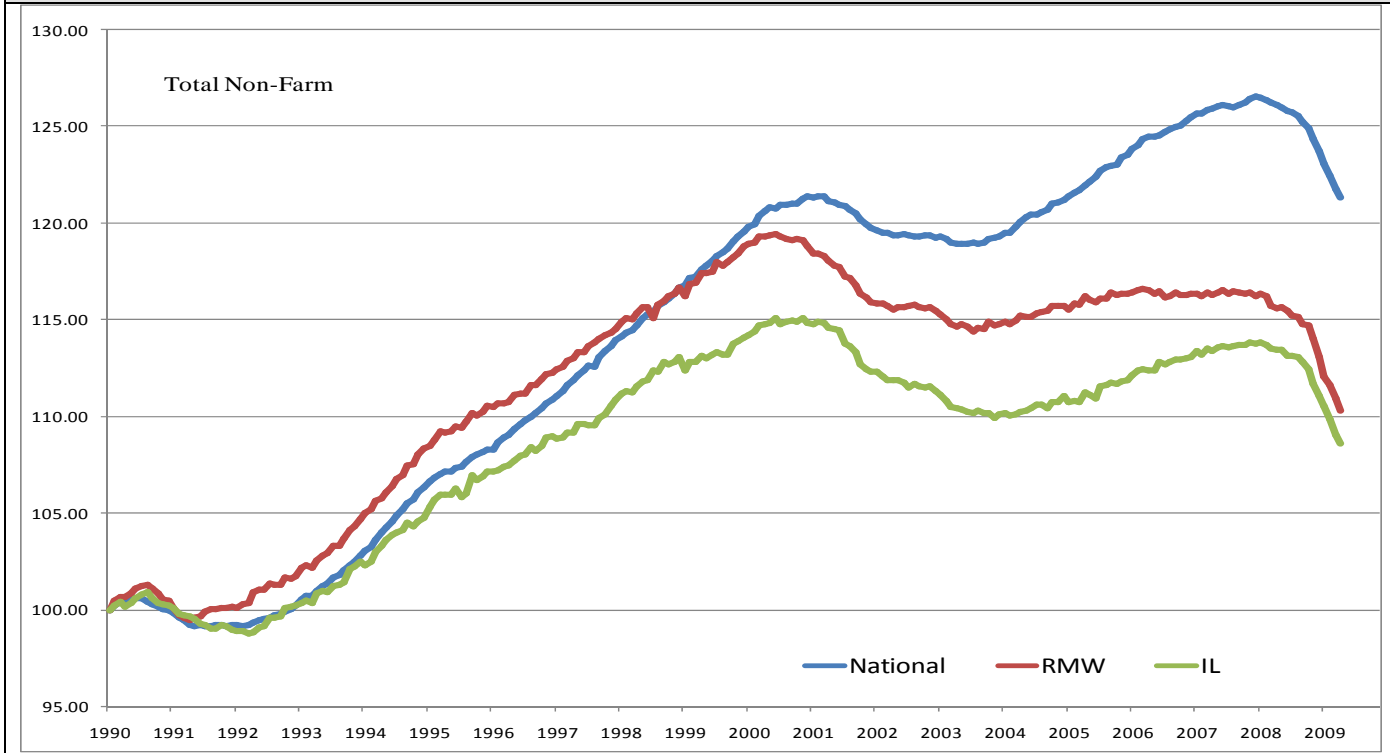
The monthly Illinois Job Index and MSA Report are issued monthly as tools for elected officials, policy leaders and the public. The objective is to enhance the understanding of the Illinois economy and business climate by comparing and measuring Illinois employment growth rates against those of the Rest of the Midwest (RMW: Indiana, Iowa, Michigan, Missouri, Ohio and Wisconsin) and the Nation. Data and analysis is provided by the Illinois Economic Observatory / Regional Economics Applications Laboratory, University of Illinois.

	May 2009 Negative		Mar 2009 – Apr 2009		Last 12 months		Apr 2009
		Total non-farm employment	Growth Rate %	Number of Jobs	Growth Rate%	Number of Jobs	Shadow U.R. *
		Nation	-0.41	-539,000	-3.81	-5,240,000	10.0%
		RMW	-0.57	-107,400	-4.58	-905,100	12.5%
		Illinois	-0.40	-23,100	-4.27	-255,400	11.5%

\*REAL has estimated a *shadow unemployment rate*; this is calculated as the unemployment rate that would be observed if labor force participation rates matched the average for the 15-year period from 1990 to 2004.

Talking Points	
Illinois Notes	<ul style="list-style-type: none"> <li>▪ Illinois lost 23,100 jobs at a rate of -0.40% April 2009, compare to a revised 40,700 job loss in March.</li> <li>▪ Illinois, RMW, and the nation all lost jobs in April. However, the job loss rates were smaller than last month in all three cases.</li> <li>▪ Since the beginning of the recession in Dec 2007, Illinois has posted negative job changes 16 times, and the state has lost 273,900 jobs in this recession. 234,700 jobs (85.7%) have been lost since Sep 2008.</li> <li>▪ Through 2008, Illinois lost -11,808 jobs at a rate of -0.20% on average per month. However, the average monthly loss for the first four months of 2009 was 32,425 jobs at a rate of -0.56%.</li> <li>▪ Over the last 12 months, Illinois payroll growth was -4.27%, higher than the -3.81% growth of the nation. RMW continued with a negative rating (-4.58%) and has recorded a negative rate for 14 months in a row.</li> <li>▪ Through April 2009, the cumulative job growth for Illinois, RMW and the Nation compared to January 1990 stood at 8.63%, 10.29%, and 21.31%, respectively.</li> <li>▪ The shadow unemployment rates for the Illinois, RMW and the Nation were 11.5%, 12.5% and 10.0%, compared to 9.4%, 9.9% and 8.9% official unemployment rates for Illinois, RMW and Nation.</li> <li>▪ The shadow unemployment rates for the Illinois and the Nation slightly decreased compared to last month.</li> </ul>
Nation Notes	<ul style="list-style-type: none"> <li>▪ The nation lost 539,000 jobs in April, up from a revised 699,000 job loss in March and a revised 681,000 job loss in February. The job losses in the first four months were over 2.6 million.</li> <li>▪ Since the last employment peak in December 2007, the nation has lost 5,738,000 jobs. However, for RMW and Illinois, they have not yet recovered from their respective peaks in 2000.</li> <li>▪ Since January 2008, the nation has posted negative growth for 16 months in a row with average growth rate -0.26%; the average growth rate for 2007 was 0.07%.</li> </ul>

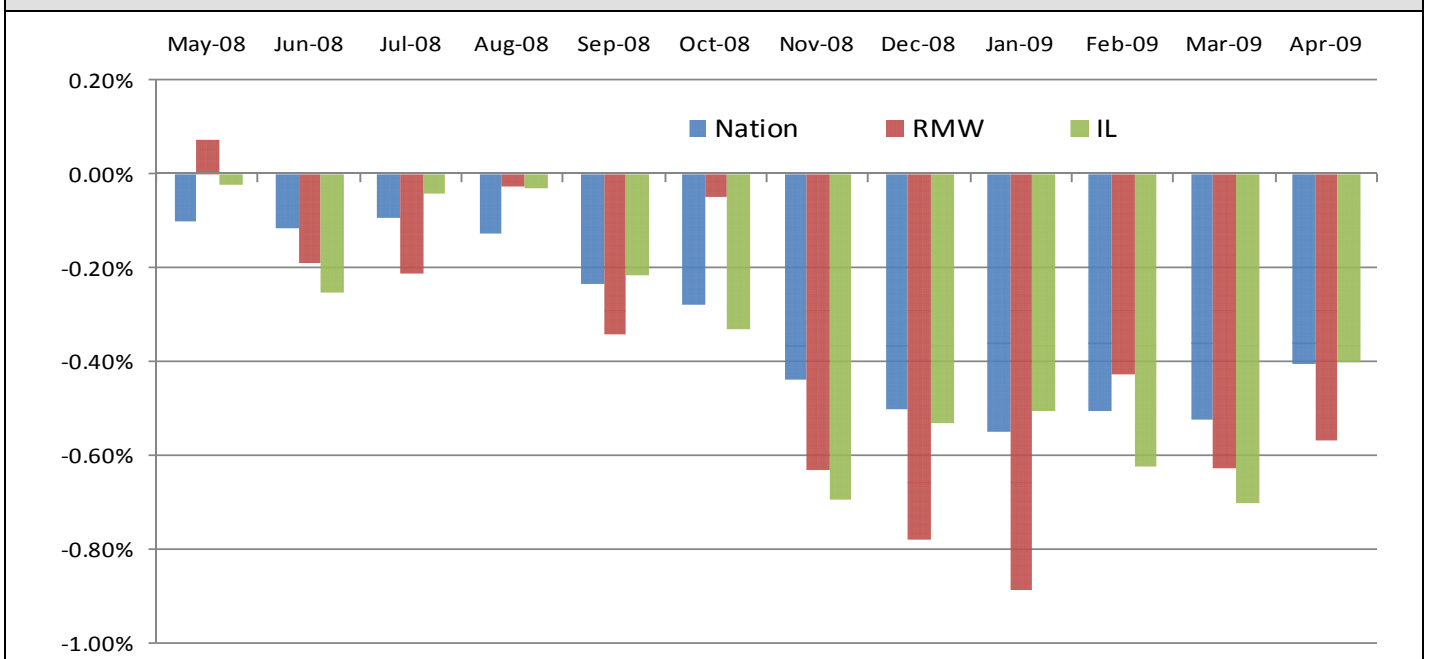
Total Non-farm Employment growth rate Jan 1990 – Apr 2009



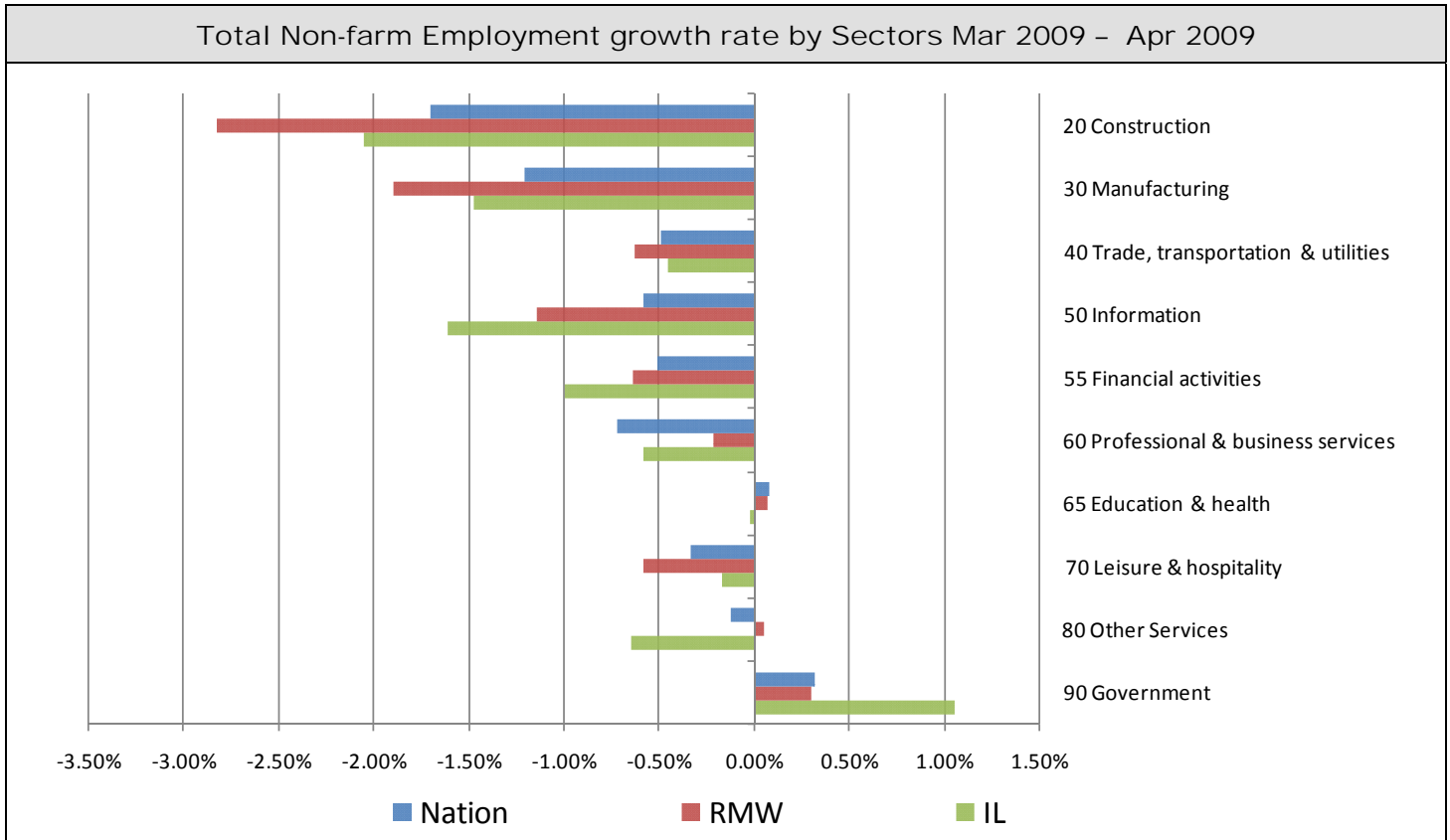
Total Non-farm Employment and Employment Index

	April 2009 Number of Jobs	Current Index to Jan 1990	Previous Peak Index to Jan 1990	Changes in Jobs since Jan 1990	Changes in Jobs since Previous Peak
<b>Nation</b>	132,414,000	121.31	126.57 (Dec-2007)	23,263,000	-5,738,000
<b>RMW</b>	18,840,900	110.29	119.44 (Jun-2000)	1,757,900	-1,565,700
<b>Illinois</b>	5,719,800	108.63	115.08 (Nov-2000)	454,200	-339,600

Last 12 months Total Non-farm Employment growth rate May 2008 – Apr 2009



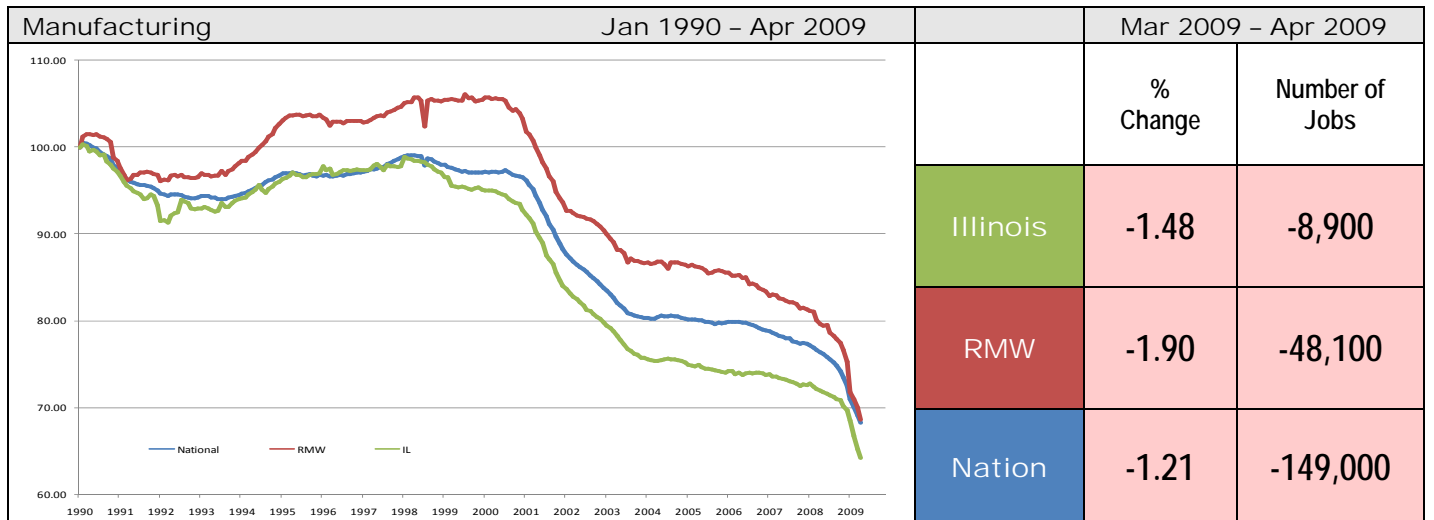
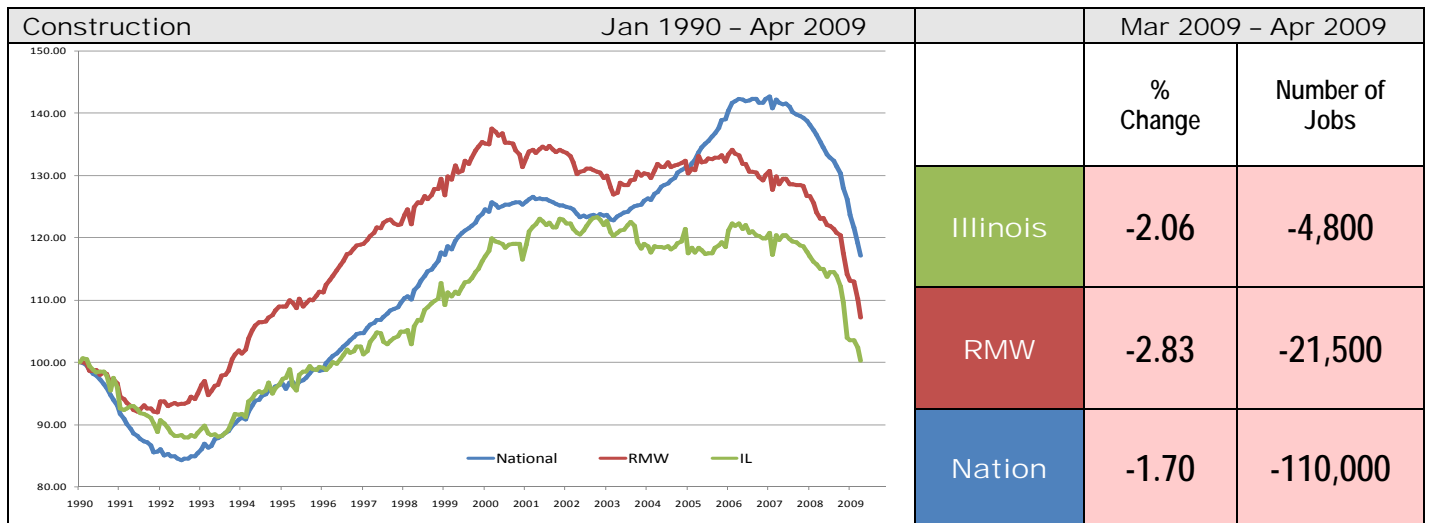
## By employment sector:

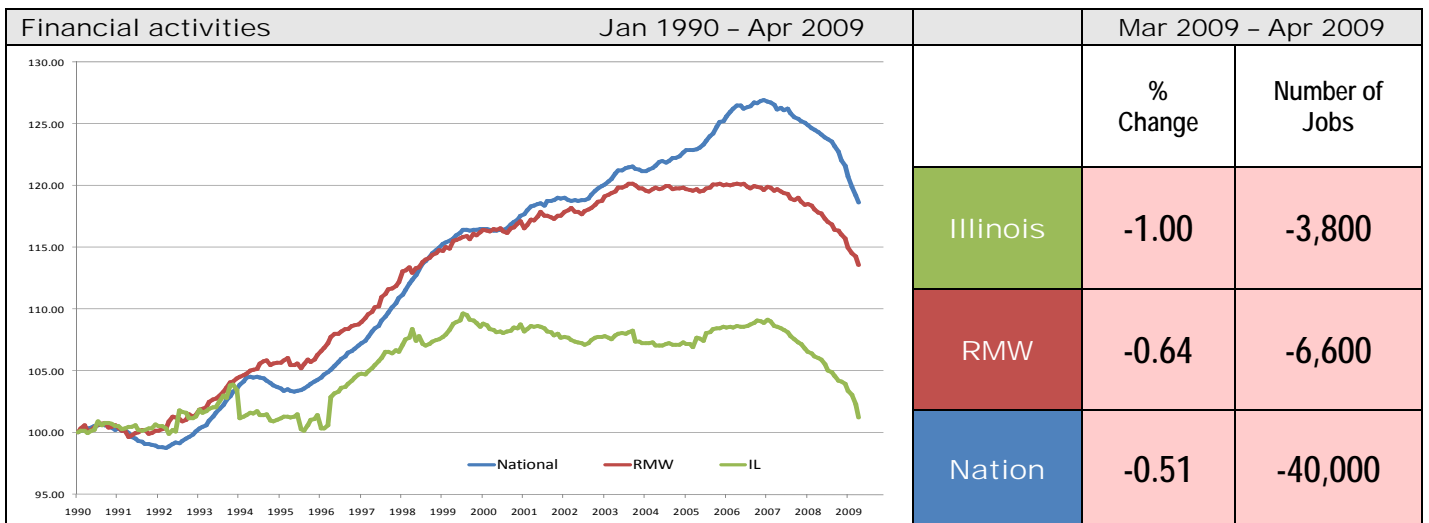
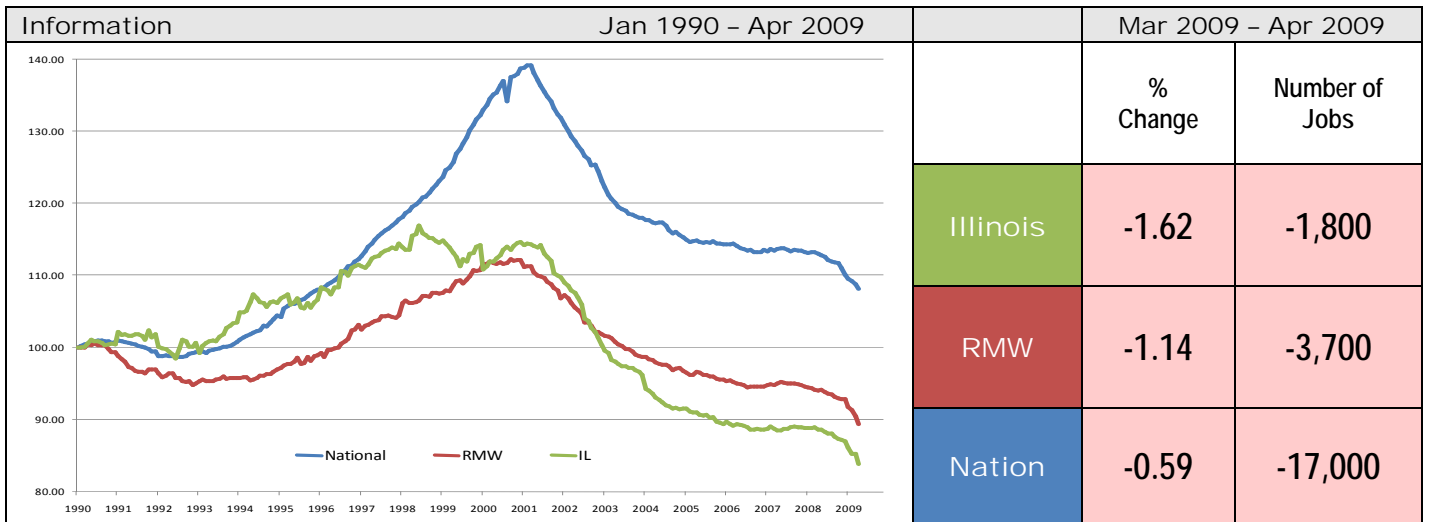
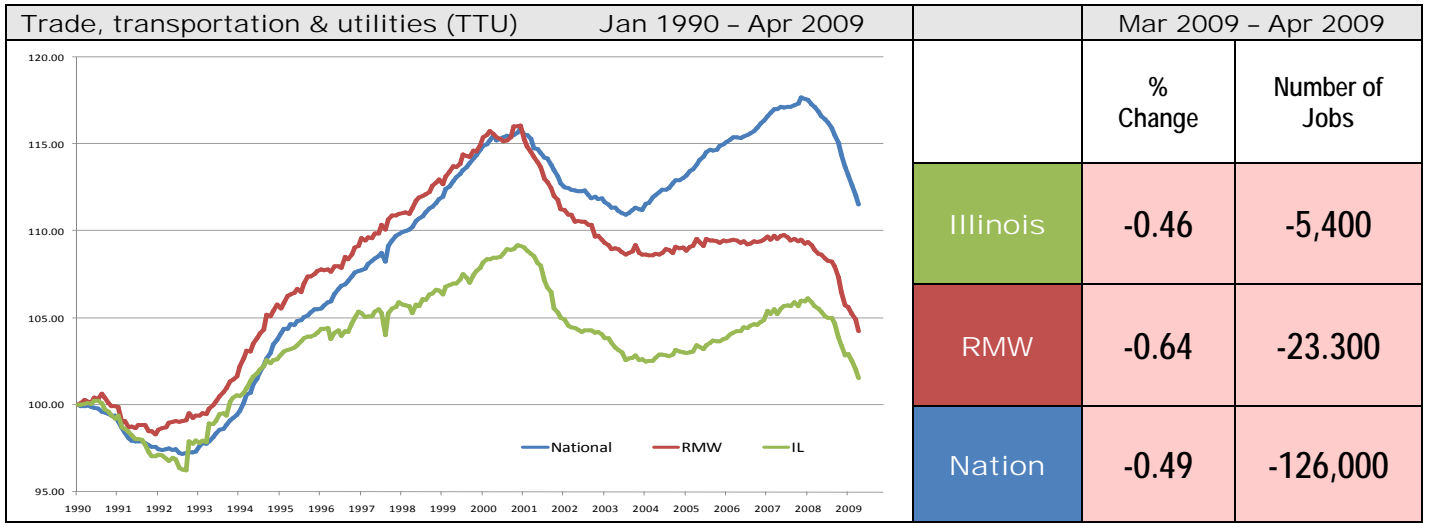


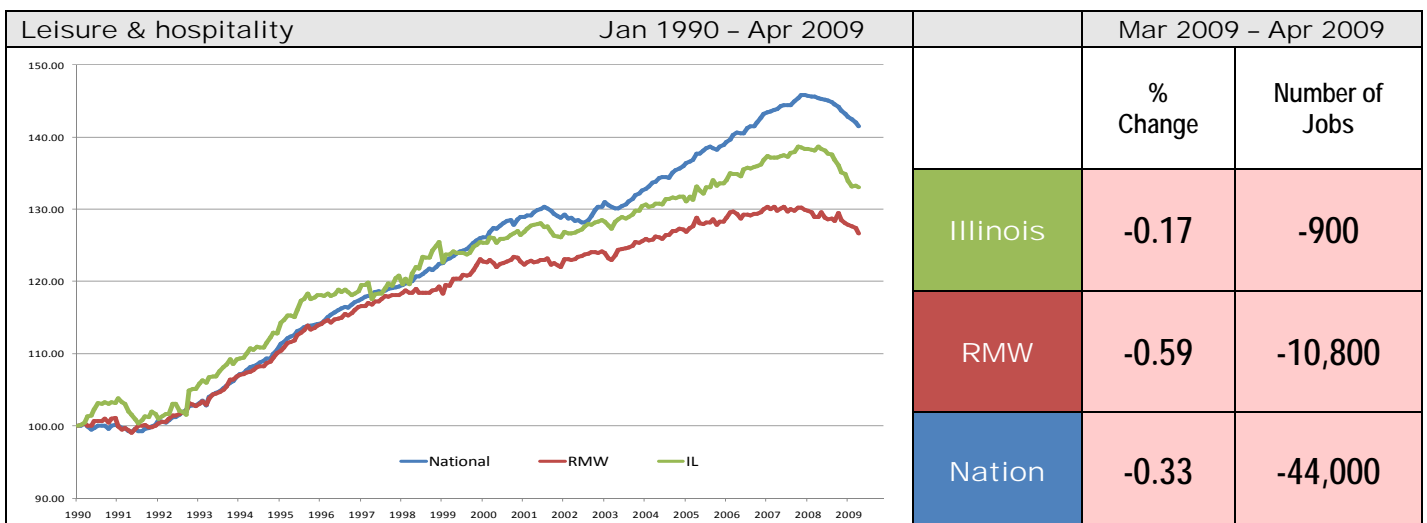
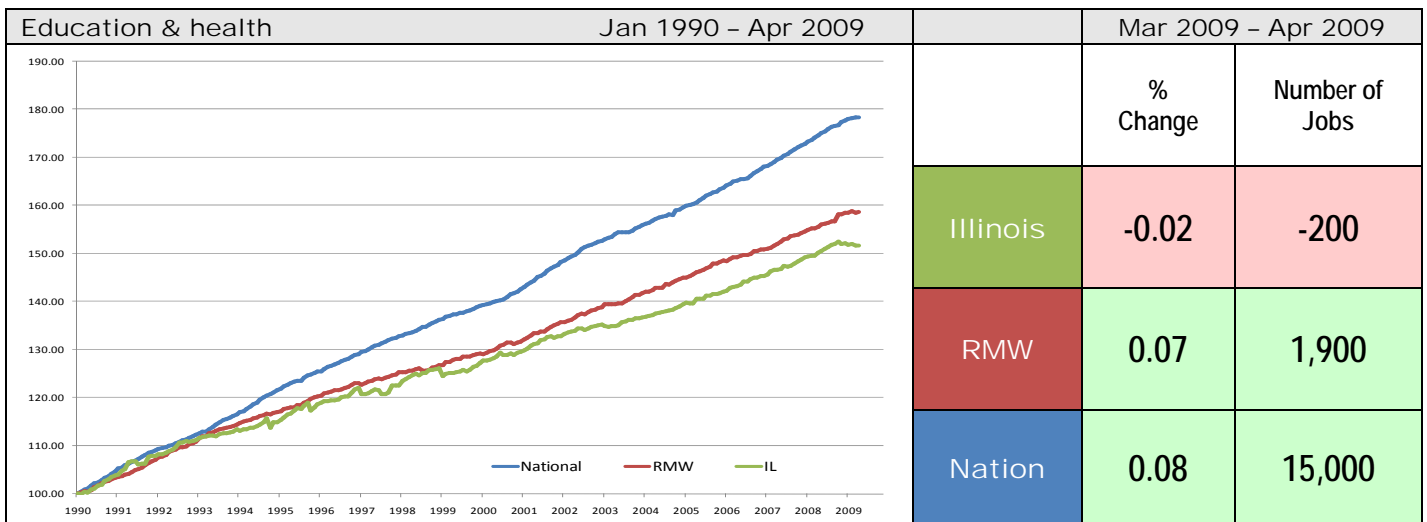
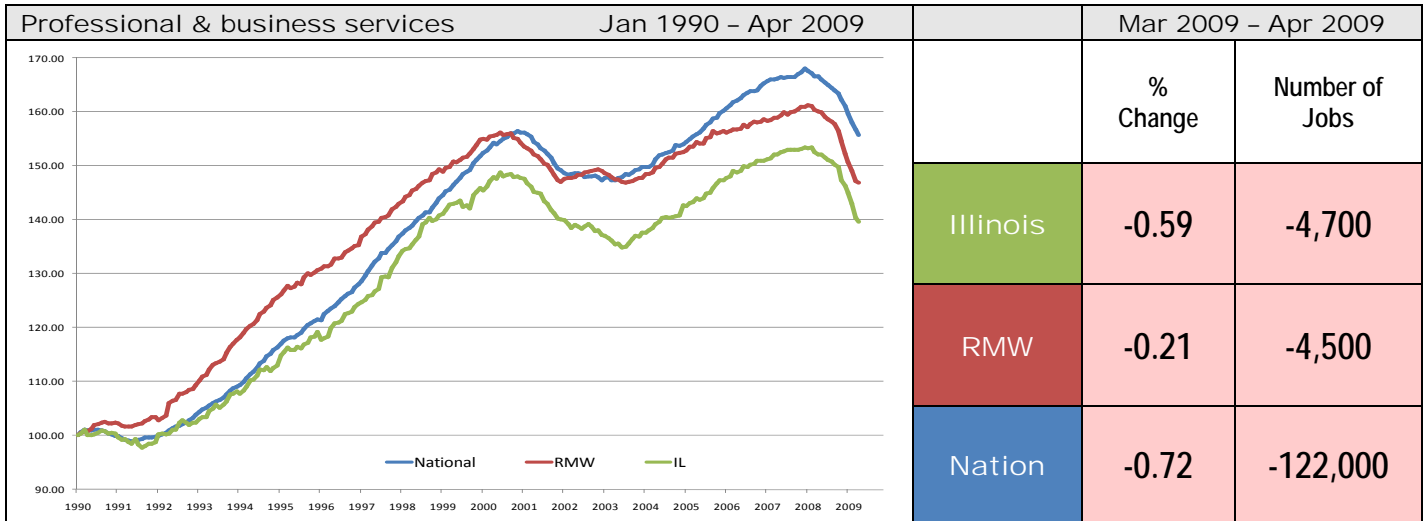
Sector notes	<ul style="list-style-type: none"> <li>▪ Illinois posted a job decline of -0.40% in April 2009. Nine out of ten sectors recorded net losses. Compared to March 2009, relative performance gains were recorded for Manufacturing (-2.32% to -1.48%), Professional &amp; business services (-1.79% to 0.59%), and Government (-0.02% to 1.05%), whereas Construction (-1.06% to -2.06%), Information (-0.09% to -1.62%), and Other Services (0.35% to -0.65%) faced major losses in performance.</li> <li>▪ In April, notable gains at the national level were recorded for the following sectors:             <ul style="list-style-type: none"> <li>○ Government: 72,000 (0.32%)</li> <li>○ Education and Health Services: 15,000 (0.08%)</li> </ul> </li> <li>▪ Major losses at the national level in April were:             <ul style="list-style-type: none"> <li>○ Manufacturing: -149,000 (-1.21%)</li> <li>○ Trade transportation &amp; utilities: -126,000 (-0.49%)</li> <li>○ Professional &amp; business services: -122,000 (-0.72%)</li> </ul> </li> <li>▪ For Illinois, only one sector posted job gain in April             <ul style="list-style-type: none"> <li>○ Government: 9,000 (1.05%)</li> </ul> </li> <li>▪ Following are the major sectors that lost jobs in April in Illinois:             <ul style="list-style-type: none"> <li>○ Manufacturing: -8,900 (-1.48%)</li> <li>○ Trade transportation &amp; utilities: -5,400 (-0.46%)</li> <li>○ Construction: -4,800 (-2.06%)</li> </ul> </li> <li>▪ For Illinois, in terms of 12-months aggregated account, Construction, Manufacturing, Trade, transportation &amp; utilities, Information, Financial activities, Professional &amp; business services, Leisure and Hospitality, and Other Services all recorded net losses. Education &amp; health services and Government were the only two positive contributors.</li> </ul>
--------------	---

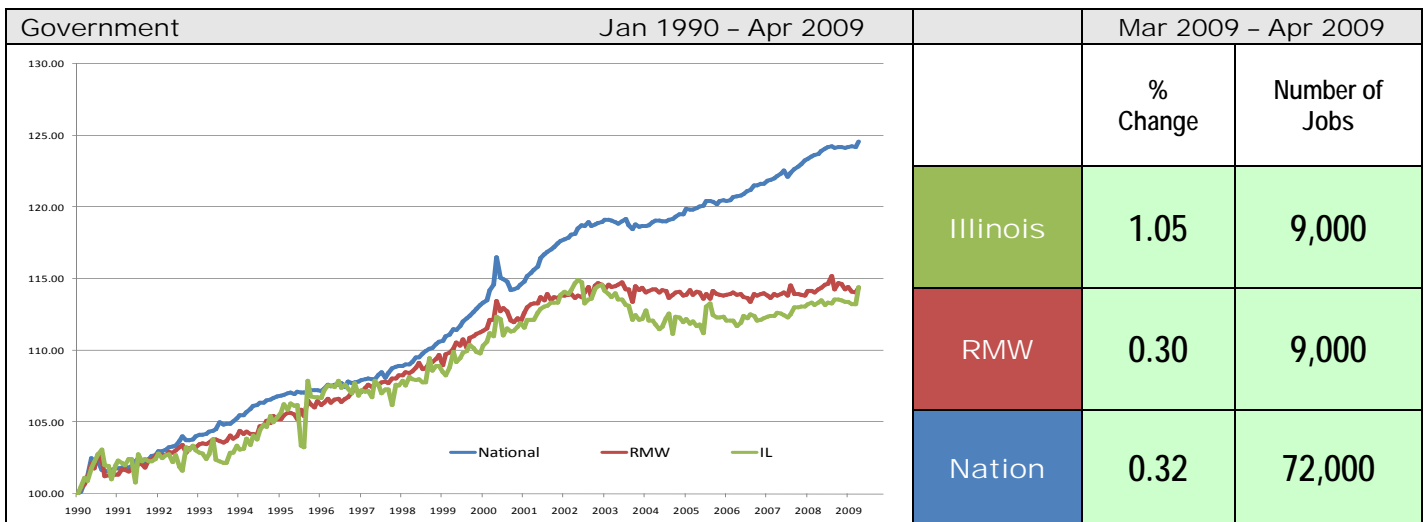
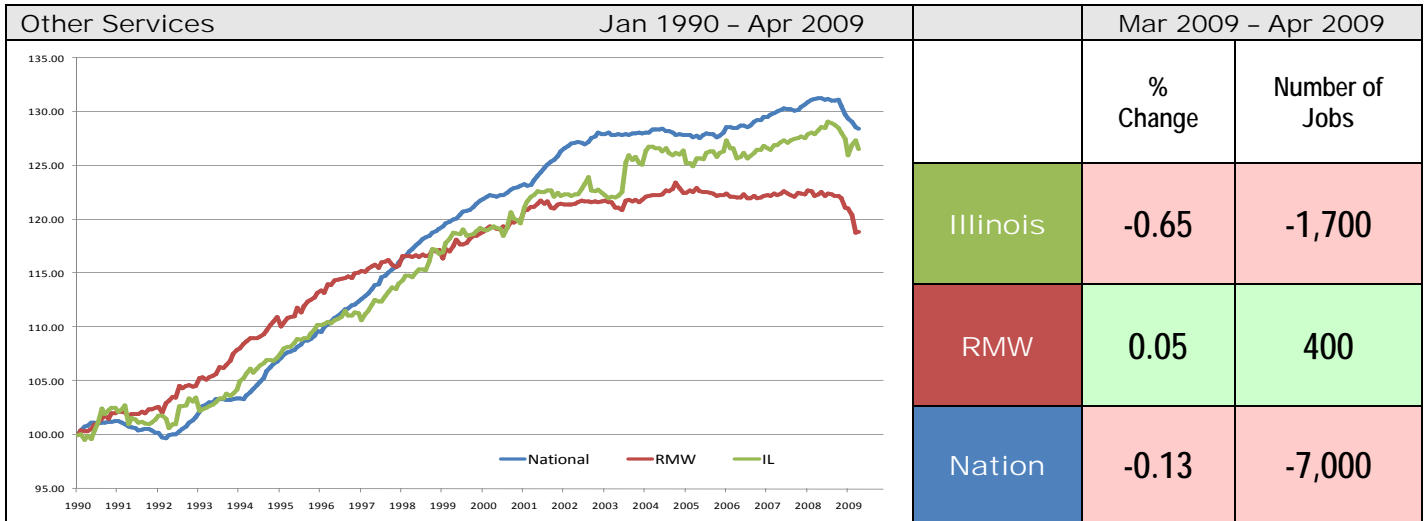
Total Non-farm Employment growth rate by sector Jan 1990 - Apr 2009

	Illinois				RMW	Nation
	vs. RMW	vs. Nation	Number of Jobs	Rate %	Rate %	Rate %
Construction	-	-	700	0.31	7.11	17.08
Manufacturing	-	-	-330,200	-35.75	-31.39	-31.73
Trade, transportation & utilities (TTU)	-	-	17,800	1.55	4.23	11.51
Information	-	-	-21,100	-16.16	-10.60	8.13
Financial activities	-	-	4,700	1.26	13.56	18.62
Professional & business services	-	-	226,100	39.61	46.92	55.66
Education & health	-	-	273,500	51.69	58.63	78.43
Leisure & hospitality	+	-	127,500	33.03	26.67	41.55
Other Services	+	-	54,500	26.53	18.83	28.41
Government	-	-	108,700	14.42	14.38	24.58









**ABOUT:** The Regional Economics Applications Laboratory (REAL) is a unit of the Institute of Government and Public Affairs of the University of Illinois. REAL undertakes impact and forecasting analyses of the Illinois and several Midwestern economies and is also engaged in similar analysis in several other countries including Brazil, Chile, Colombia, Japan. More information can be found at [www.real.uiuc.edu](http://www.real.uiuc.edu).