


Illinois Job Index

Release 11/24/2009	Data Jan 1990 / Oct 2009	Issue 2009.11	www.real.uiuc.edu
-----------------------	-----------------------------	------------------	-------------------

For the October 2009 Illinois Job Index, a negative rating continues. Nation lost jobs as well. However, the RMW has the biggest single month job increase rate since 2006.

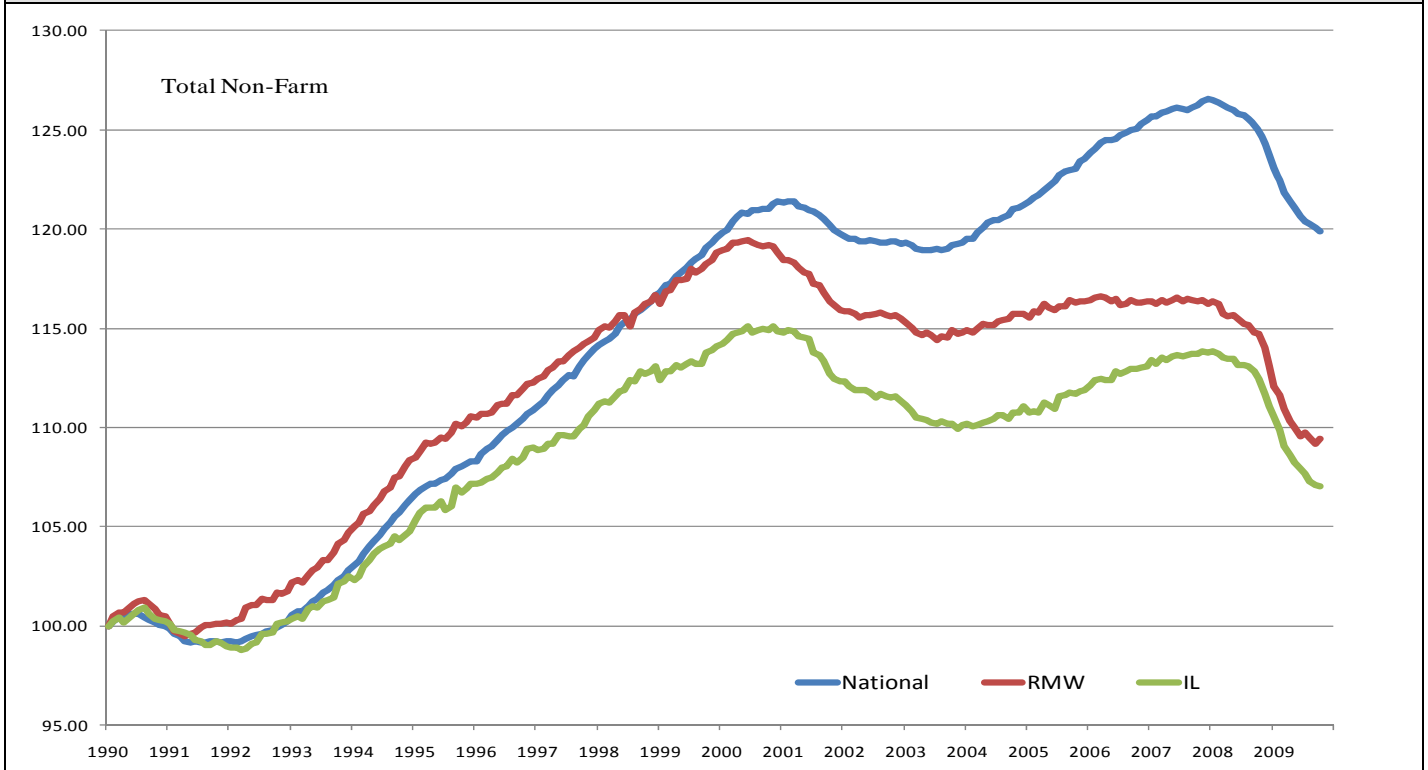
The monthly Illinois Job Index and MSA Report are issued monthly as tools for elected officials, policy leaders and the public. The objective is to enhance the understanding of the Illinois economy and business climate by comparing and measuring Illinois employment growth rates against those of the Rest of the Midwest (RMW: Indiana, Iowa, Michigan, Missouri, Ohio and Wisconsin) and the Nation. Data and analysis is provided by the Illinois Economic Observatory / Regional Economics Applications Laboratory, University of Illinois.

	Nov 2009 Negative		Sep 2009–Oct 2009		Last 12 months		Oct 2009
		Total non-farm employment	Growth Rate %	Number of Jobs	Growth Rate%	Number of Jobs	Shadow U.R. *
		Nation	-0.14	-190,000	-4.04	-5,504,000	12.3%
		RMW	0.22	41,200	-4.63	-908,000	14.5%
		Illinois	-0.06	-3,200	-4.83	-286,300	13.2%

*REAL has estimated a *shadow unemployment rate*; this is calculated as the unemployment rate that would be observed if labor force participation rates matched the average for the 15-year period from 1990 to 2004.

Talking Points	
Illinois Notes	<ul style="list-style-type: none"> ▪ Illinois lost 3,200 jobs at a rate of -0.06% in October 2009, compared to a revised 10,100 job loss in September. ▪ In October 2009, the Nation shed 190,000 jobs at a rate of -0.14%. This is much better than the average 448,000 jobs loss per month for the first nine months in 2009. ▪ RMW added 41,200 jobs in October after a revised 54,800 job loss in September. ▪ Since the beginning of the recession in Dec 2007, Illinois has posted negative job changes 22 times, and the state has lost 358,100 jobs in this recession. ▪ Through 2008, Illinois lost -11,800 jobs at a rate of -0.20% on average per month. However, the average monthly loss for the first ten months of 2009 was -21,400 jobs at a rate of -0.37%. ▪ Five sectors in Illinois have employment levels in this month that are lower than January 1990 - Manufacturing, Information, Construction, Trade, transportation & utilities, and Financial activities. ▪ Over the last 12 months, Illinois shed 286,300 jobs at a rate -4.83%. ▪ Through October 2009, the cumulative job growth for Illinois, RMW and the Nation compared to January 1990 stood at 7.03%, 9.41%, and 19.88%, respectively. ▪ The shadow unemployment rates for the Illinois, RMW and the Nation were 13.2%, 14.5% and 12.3%, compared to official unemployment rates of 11.0%, 10.7% and 10.2%.
Nation Notes	<ul style="list-style-type: none"> ▪ The nation lost 190,000 jobs in October, compared to a revised 219,000 job loss last month. The job loss in October was higher than economists' forecast of 175,000. ▪ Since the last employment peak in December 2007, the nation has lost 7,184,000 jobs. However, for RMW and Illinois, they have not yet recovered from their respective peaks in 2000. ▪ Since January 2008, the nation has posted monthly negative growth for twenty-two months with average monthly growth rate -0.25%; the average growth rate for 2007 was 0.07%.

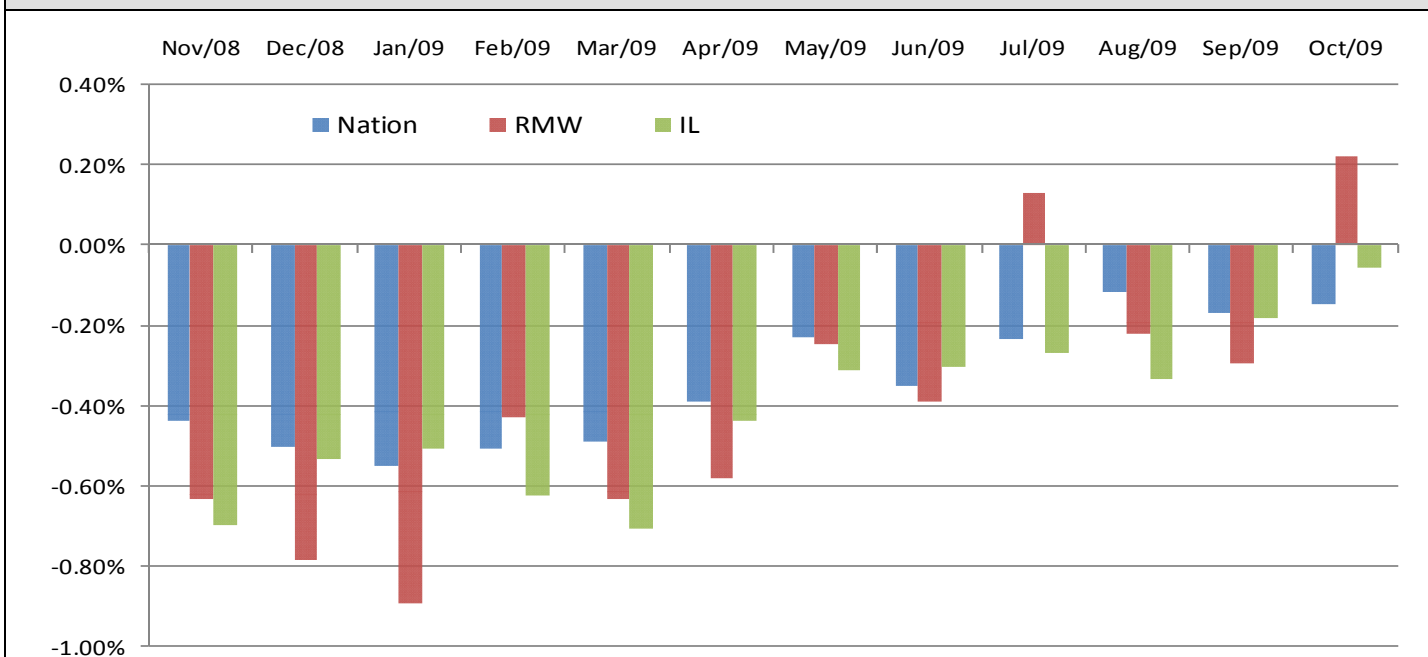
Total Non-farm Employment growth rate Jan 1990 – Oct 2009



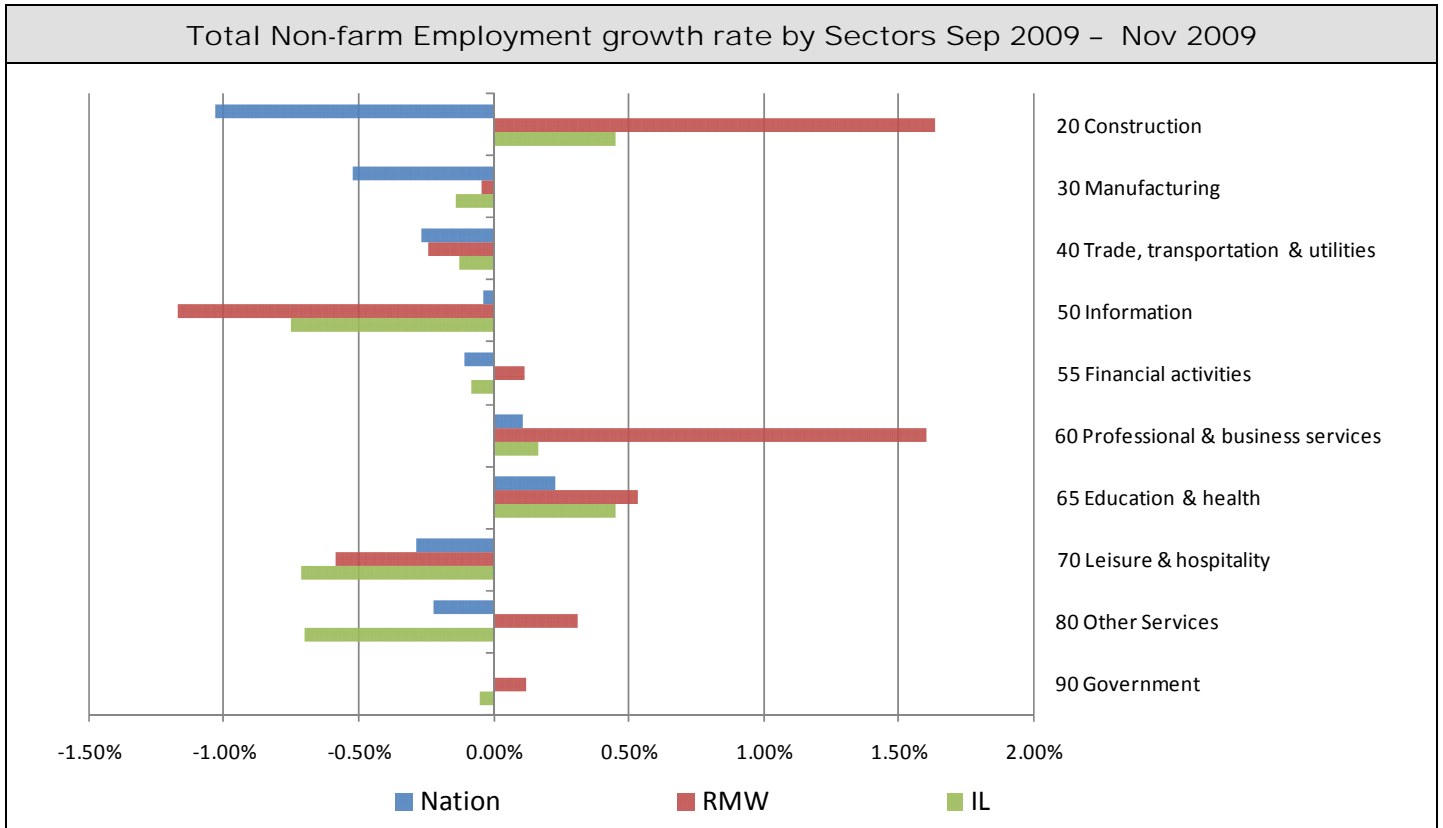
Total Non-farm Employment and Employment Index

	Oct 2009 Number of Jobs	Current Index to Jan 1990	Previous Peak Index to Jan 1990	Changes in Jobs since Jan 1990	Changes in Jobs since Pervious Peak
Nation	130,848,000	119.88	126.57 (Dec-2007)	21,697,000	-7,304,000
RMW	18,689,800	109.41	119.44 (Jun-2000)	1,606,800	-1,716,800
Illinois	5,635,600	107.03	115.08 (Nov-2000)	370,000	-423,800

Last 12 months Total Non-farm Employment growth rate Nov 2008 – Oct 2009



By employment sector:

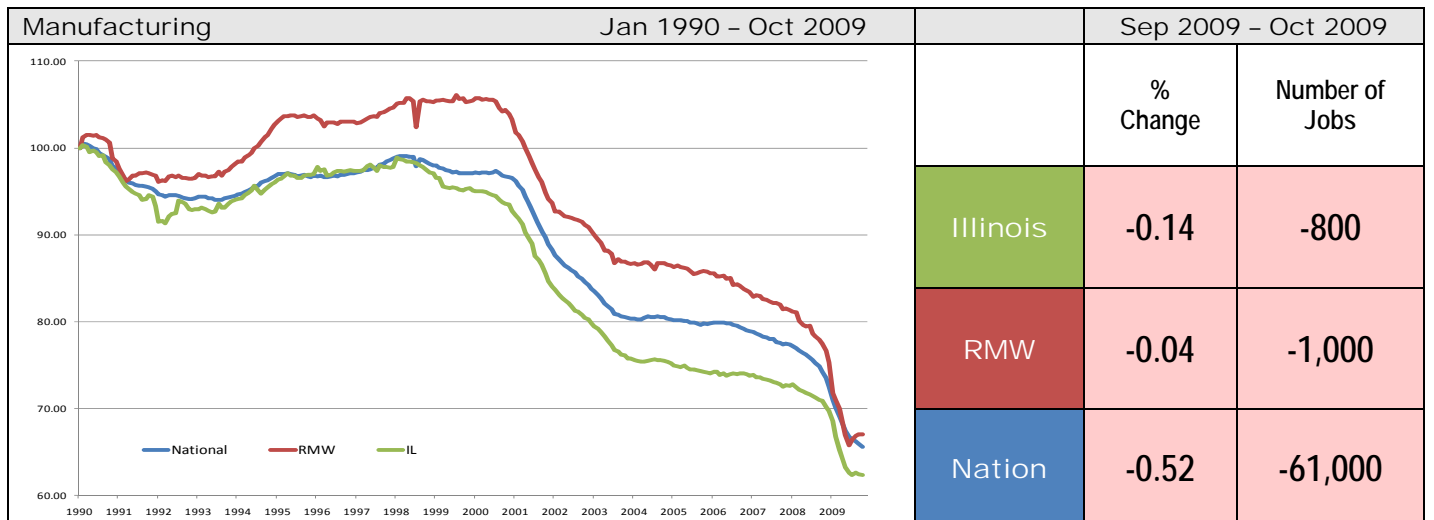
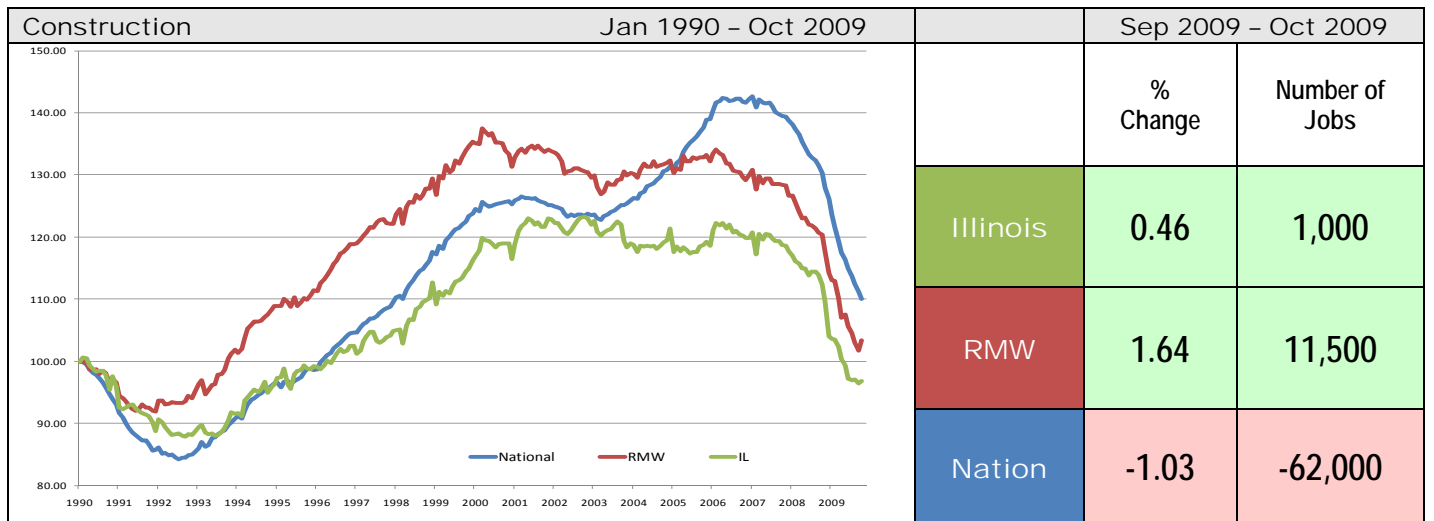


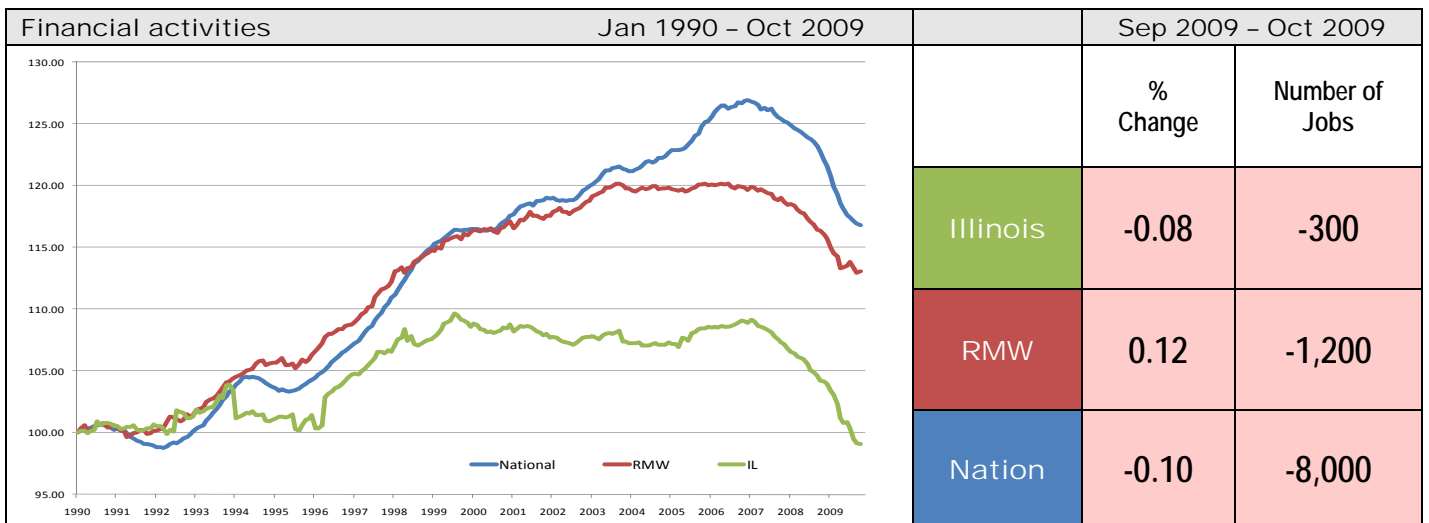
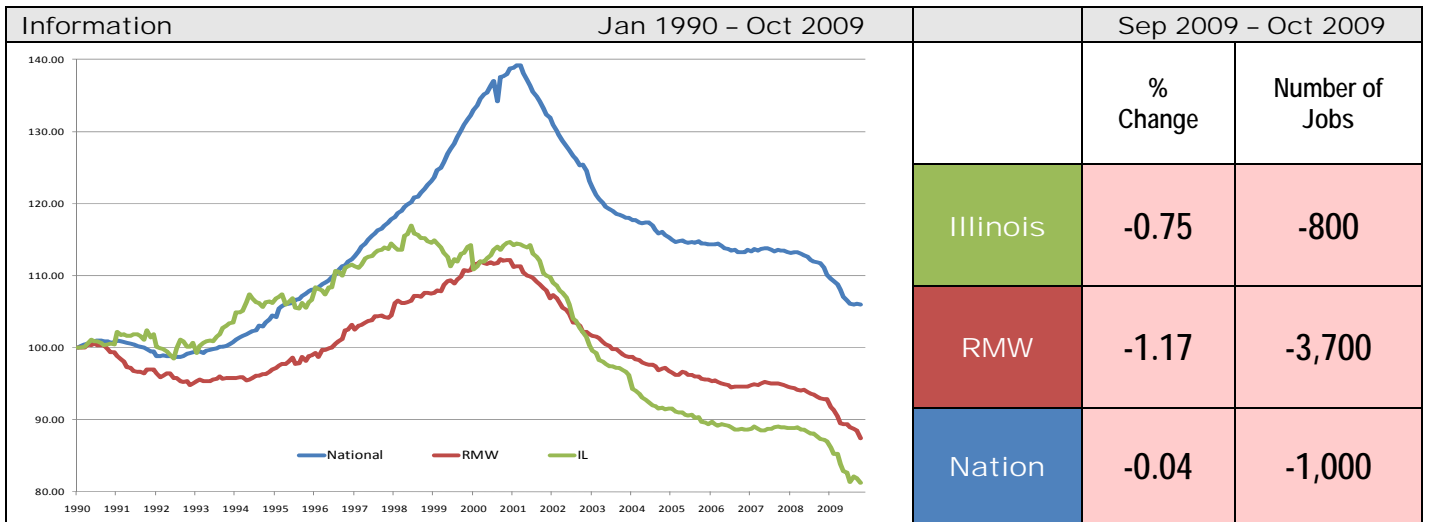
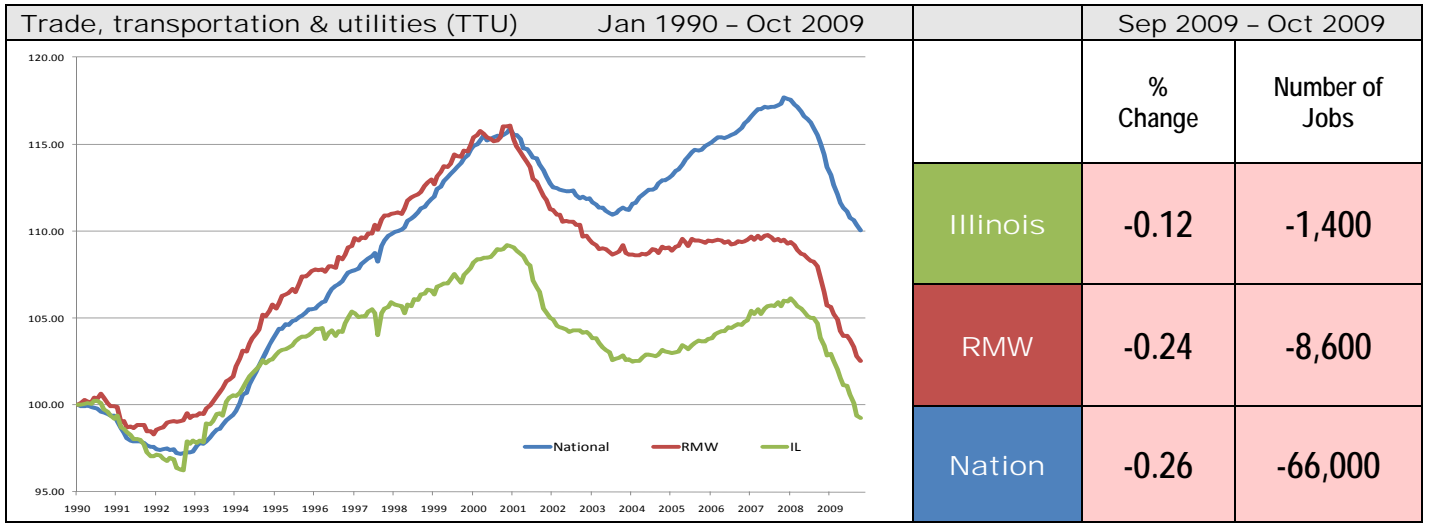
Sector notes

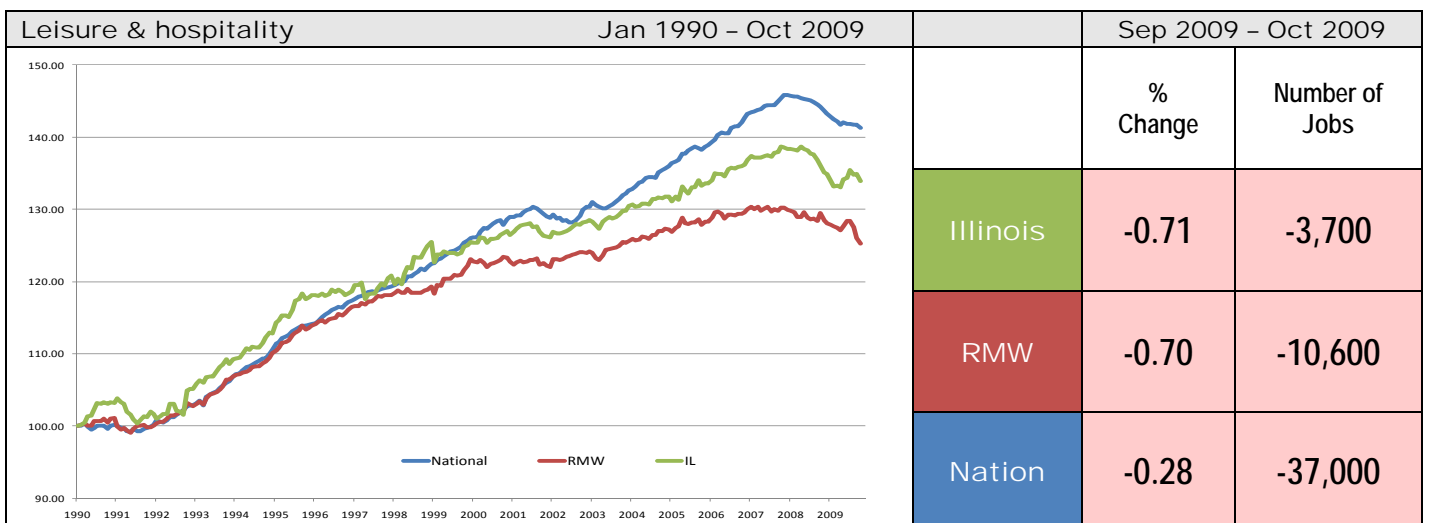
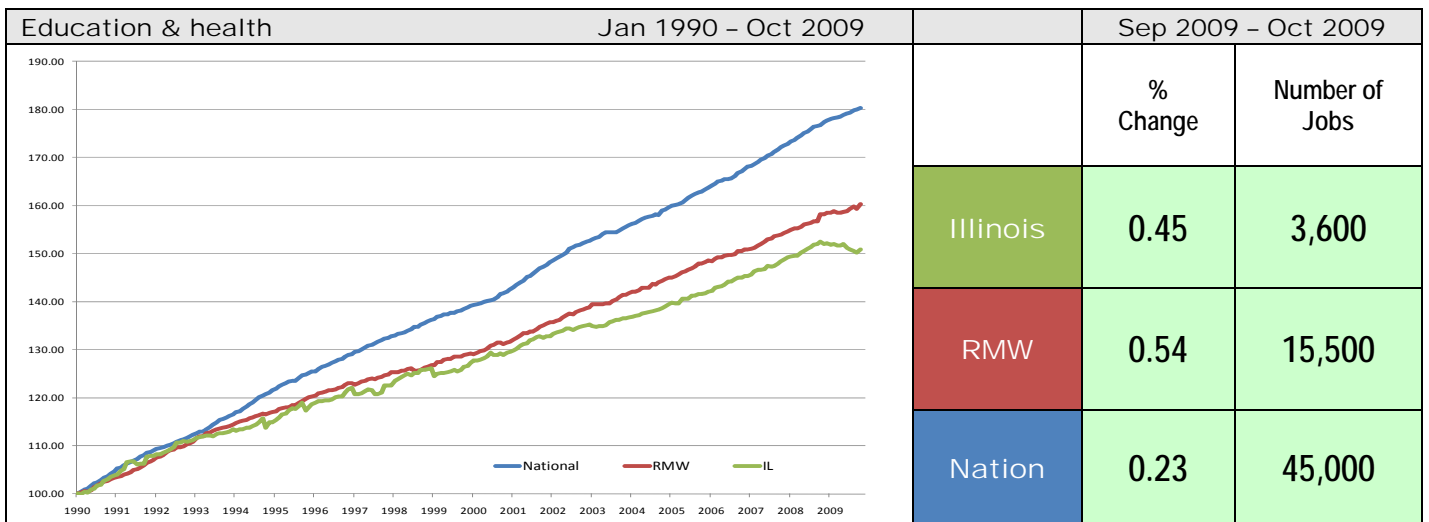
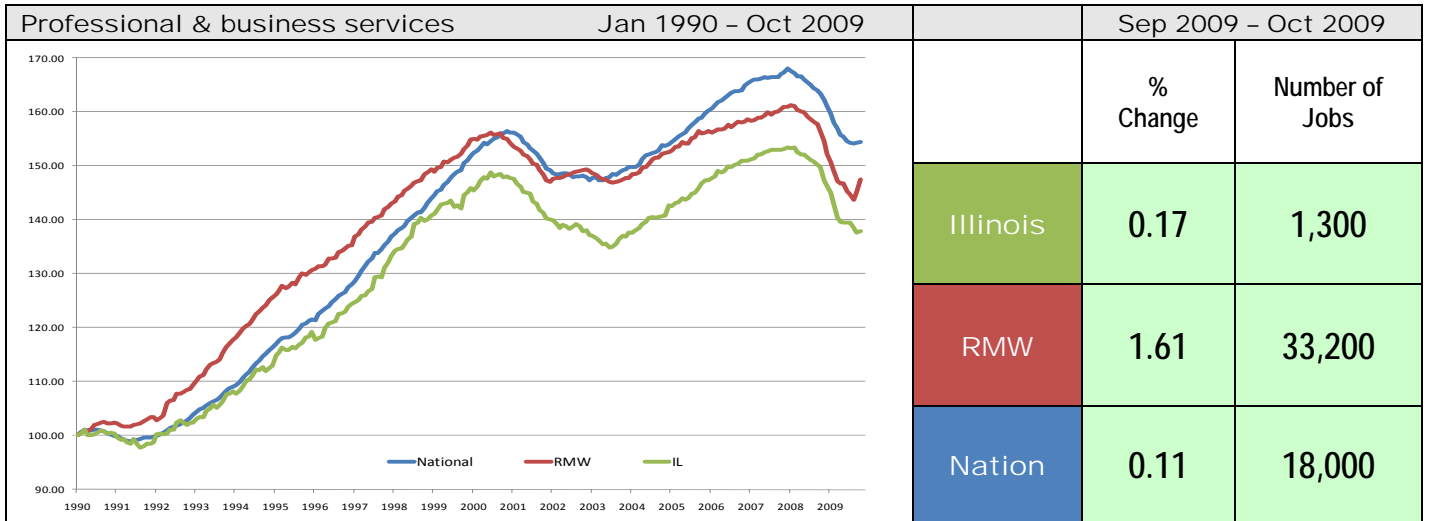
- Illinois posted a job decline of -0.06% in October 2009. Seven out of ten sectors recorded net losses. Compared to September 2009, relative performance gains were recorded for Construction (-0.63% to 0.46%), Professional and business services (-0.66% to 0.17%), and Education and health Services (-0.26% to 0.45%), whereas Other services (0.78% to -0.70%), Government (0.97% to -0.05%), and Leisure and hospitality (0.02% to -0.71%) faced major losses in performance.
- In October at the national level, two sectors added jobs:
 - Education and Health Services: 45,000 (0.23%)
 - Professional and business services: 18,000 (0.11%)
- Major losses at the national level in October were:
 - Trade transportation& utilities: -66,000 (-0.26%)
 - Construction: -62,000 (-1.03%)
 - Manufacturing: -61,000 (-0.52%)
- For Illinois, three sectors posted job gains in October
 - Education and Health Services: 3,600 (0.45%)
 - Professional and business services: 1,300 (0.17%)
 - Construction: 1,000 (0.46%)
- Following are the major sectors that lost jobs in October for Illinois:
 - Trade transportation& utilities: -1,400 (-0.12%)
 - Other Services: -1,800 (-0.70%)
 - Leisure & hospitality: -3,700 (-0.71%)
- For Illinois, five sectors have employment below 1990 levels. They are Manufacturing with -348,000 jobs less, Information with -24,500 jobs less, Construction with -7,100 jobs less, Trade transportation& utilities with -8,700 jobs less, and Financial activities with -3,500 jobs less, than their 1990 employment levels, respectively.

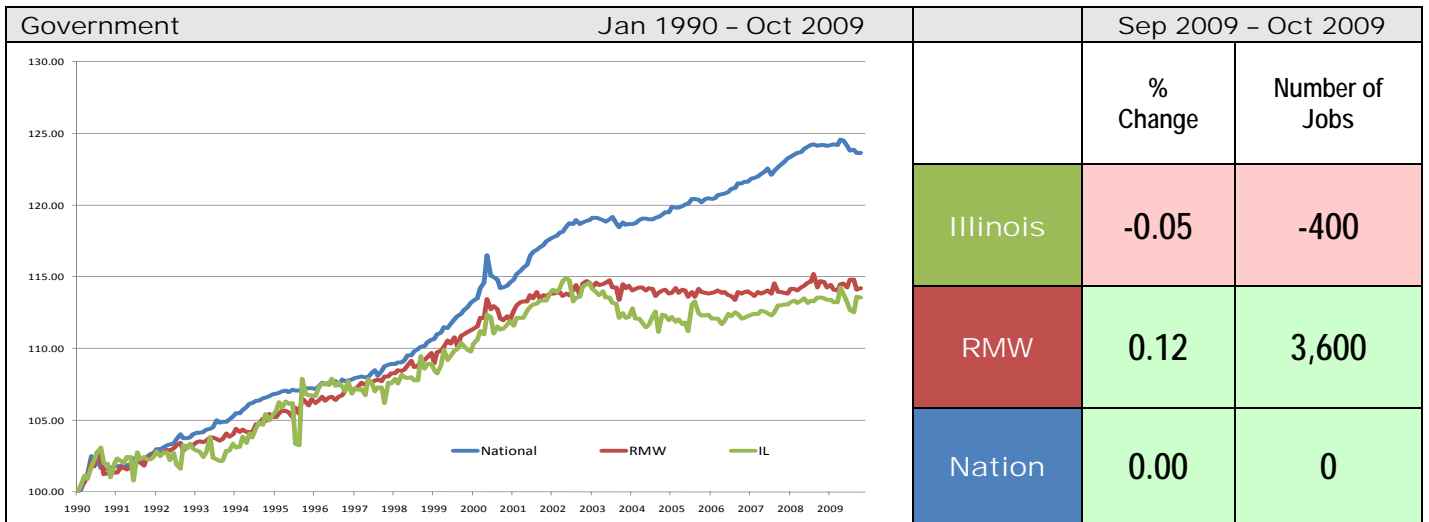
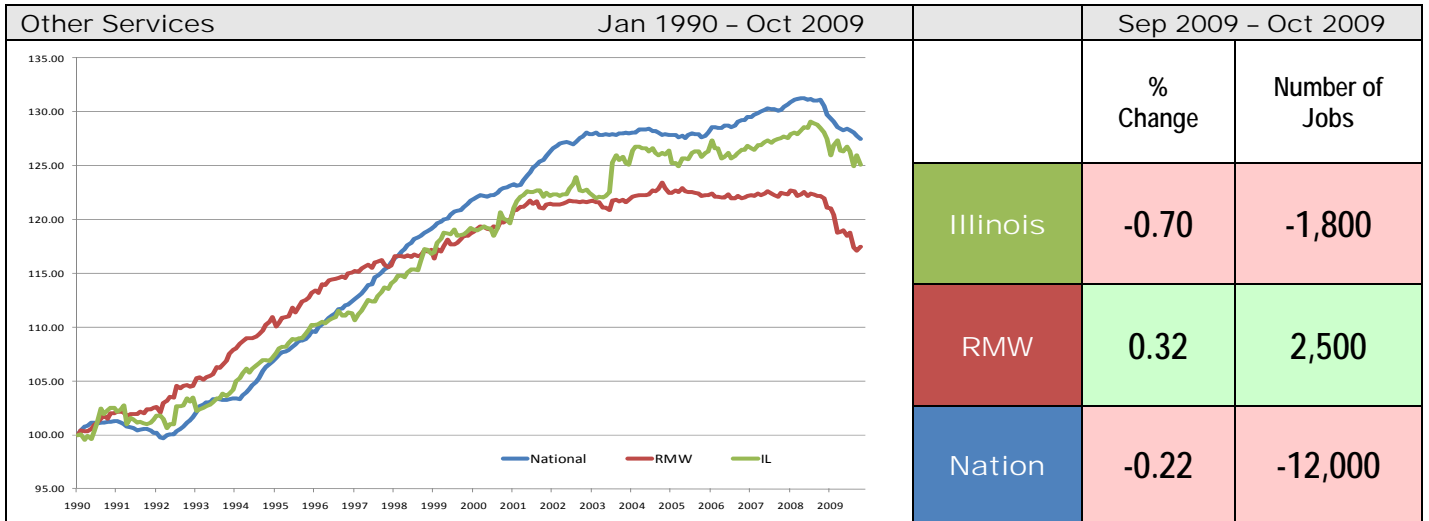
Total Non-farm Employment growth rate by sector Jan 1990 - Oct 2009

	Illinois				RMW	Nation
	vs. RMW	vs. Nation	Number of Jobs	Rate %	Rate %	Rate %
Construction	-	-	-7,100	-3.12	3.35	10.03
Manufacturing	-	-	-348,000	-37.68	-33.01	-34.41
Trade, transportation & utilities (TTU)	-	-	-8,700	-0.76	2.53	10.05
Information	-	-	-24,500	-18.76	-12.56	6.03
Financial activities	-	-	-3,500	-0.94	13.05	16.83
Professional & business services	-	-	216,000	37.84	47.46	54.38
Education & health	-	-	269,000	50.84	60.22	80.39
Leisure & hospitality	+	-	130,900	33.91	25.30	41.27
Other Services	+	-	51,500	25.07	17.48	27.51
Government	-	-	102,300	13.57	14.23	23.67









ABOUT: The Regional Economics Applications Laboratory (REAL) is a unit of the Institute of Government and Public Affairs of the University of Illinois. REAL undertakes impact and forecasting analyses of the Illinois and several Midwestern economies and is also engaged in similar analysis in several other countries including Brazil, Chile, Colombia, Japan. More information can be found at www.real.uiuc.edu.