


Illinois Job Index

Release 10/26/2009	Data Jan 1990 / Sep 2009	Issue 2009.10	www.real.uiuc.edu
-----------------------	-----------------------------	------------------	-------------------

For the September 2009 Illinois Job Index, a negative rating continues. Nation and the RMW lost jobs as well. However, the Nation has the smallest job loss rate compare to IL and RMW.

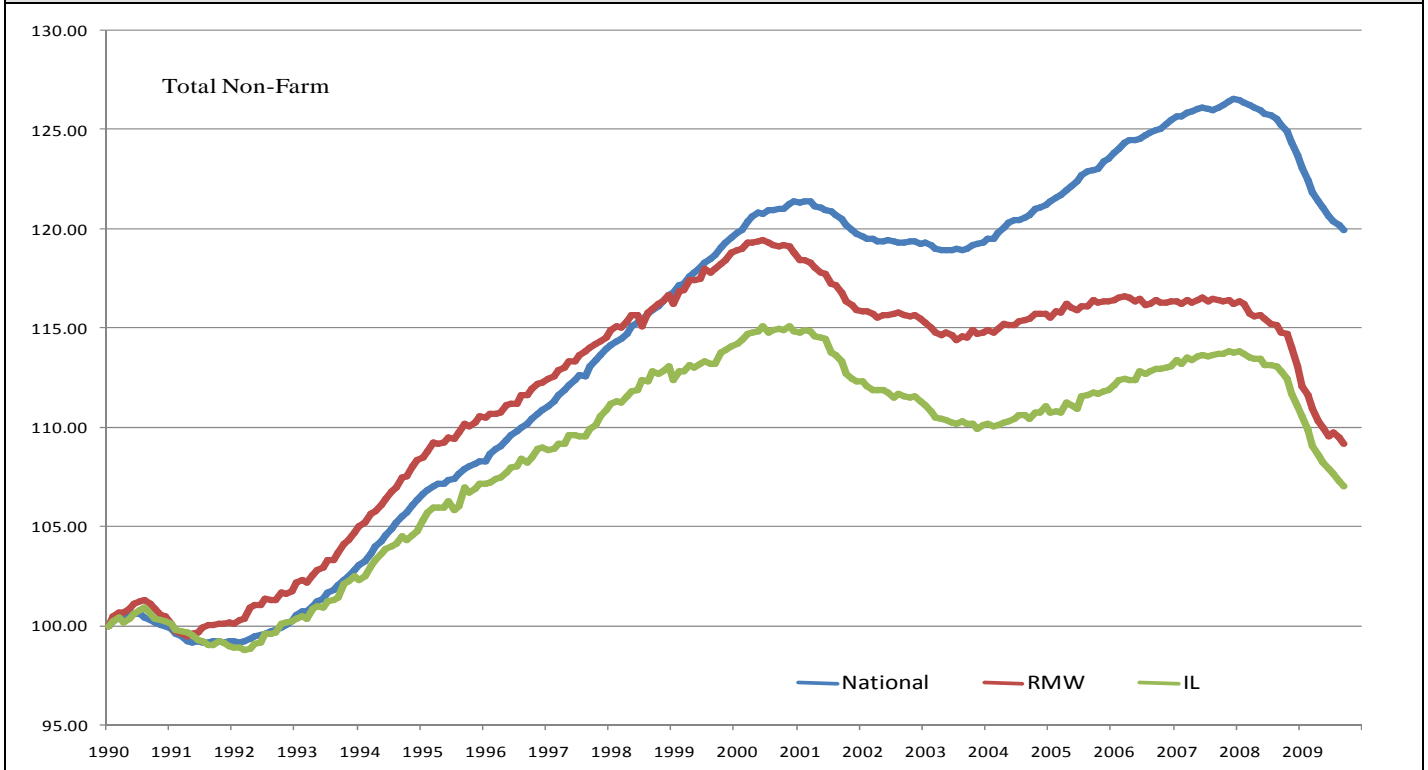
The monthly Illinois Job Index and MSA Report are issued monthly as tools for elected officials, policy leaders and the public. The objective is to enhance the understanding of the Illinois economy and business climate by comparing and measuring Illinois employment growth rates against those of the Rest of the Midwest (RMW: Indiana, Iowa, Michigan, Missouri, Ohio and Wisconsin) and the Nation. Data and analysis is provided by the Illinois Economic Observatory / Regional Economics Applications Laboratory, University of Illinois.

	Oct 2009 Negative		Aug 2009–Sep 2009		Last 12 months		Sep 2009
		Total non-farm employment	Growth Rate %	Number of Jobs	Growth Rate%	Number of Jobs	Shadow U.R. *
		Nation	-0.20	-263,000	-4.23	-5,785,000	11.8%
		RMW	-0.26	-48,900	-4.86	-953,200	14.1%
		Illinois	-0.25	-14,200	-5.17	-306,900	12.9%

*REAL has estimated a *shadow unemployment rate*; this is calculated as the unemployment rate that would be observed if labor force participation rates matched the average for the 15-year period from 1990 to 2004.

Talking Points	
Illinois Notes	<ul style="list-style-type: none"> ▪ Illinois lost 14,200 jobs at a rate of -0.25% in September 2009, compared to a revised 18,700 job loss in August. ▪ In September 2009, the Nation shed 263,000 jobs at a rate of -0.20%. This is much better than the average 483,000 jobs loss per month for the first eight months in 2009. ▪ RMW lost 48,900 jobs in September after a revised 40,800 job loss in August. ▪ Since the beginning of the recession in Dec 2007, Illinois has posted negative job changes 21 times, and the state has lost 359,000 jobs in this recession. ▪ Through 2008, Illinois lost -11,800 jobs at a rate of -0.20% on average per month. However, the average monthly loss for the first eight months of 2009 was -23,900 jobs at a rate of -0.41%. ▪ Five sectors in Illinois have employment level in this month less than January 1990, and they are Manufacturing, Information, Construction, Trade, transportation & utilities, and Financial activities. ▪ Over the last 12 months, Illinois shed 306,900 jobs at a rate -5.17%. ▪ Through September 2009, the cumulative job growth for Illinois, RMW and the Nation compared to January 1990 stood at 7.01%, 9.20%, and 19.97%, respectively. ▪ The shadow unemployment rates for the Illinois, RMW and the Nation were 12.9%, 14.1% and 11.8%, compared to official unemployment rates of 10.5%, 10.6% and 9.8%.
Nation Notes	<ul style="list-style-type: none"> ▪ The nation lost 263,000 jobs in September, compared to a revised 201,000 job loss last month. The job loss in September was much worse than economists' forecast of 175,000. ▪ Since the last employment peak in December 2007, the nation has lost 7,205,000 jobs. However, for RMW and Illinois, they have not yet recovered from their respective peaks in 2000. ▪ Since January 2008, the nation has posted monthly negative growth for twenty months with average monthly growth rate -0.25%; the average growth rate for 2007 was 0.07%.

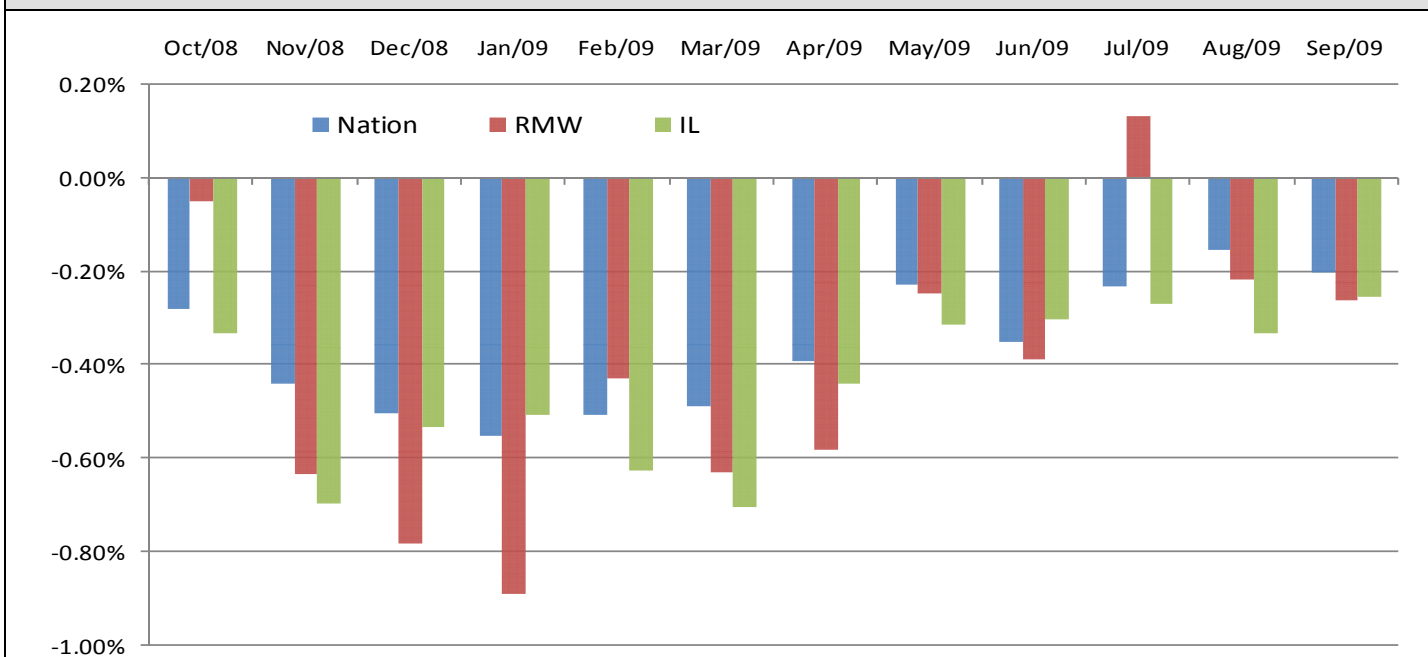
Total Non-farm Employment growth rate Jan 1990 - Sep 2009



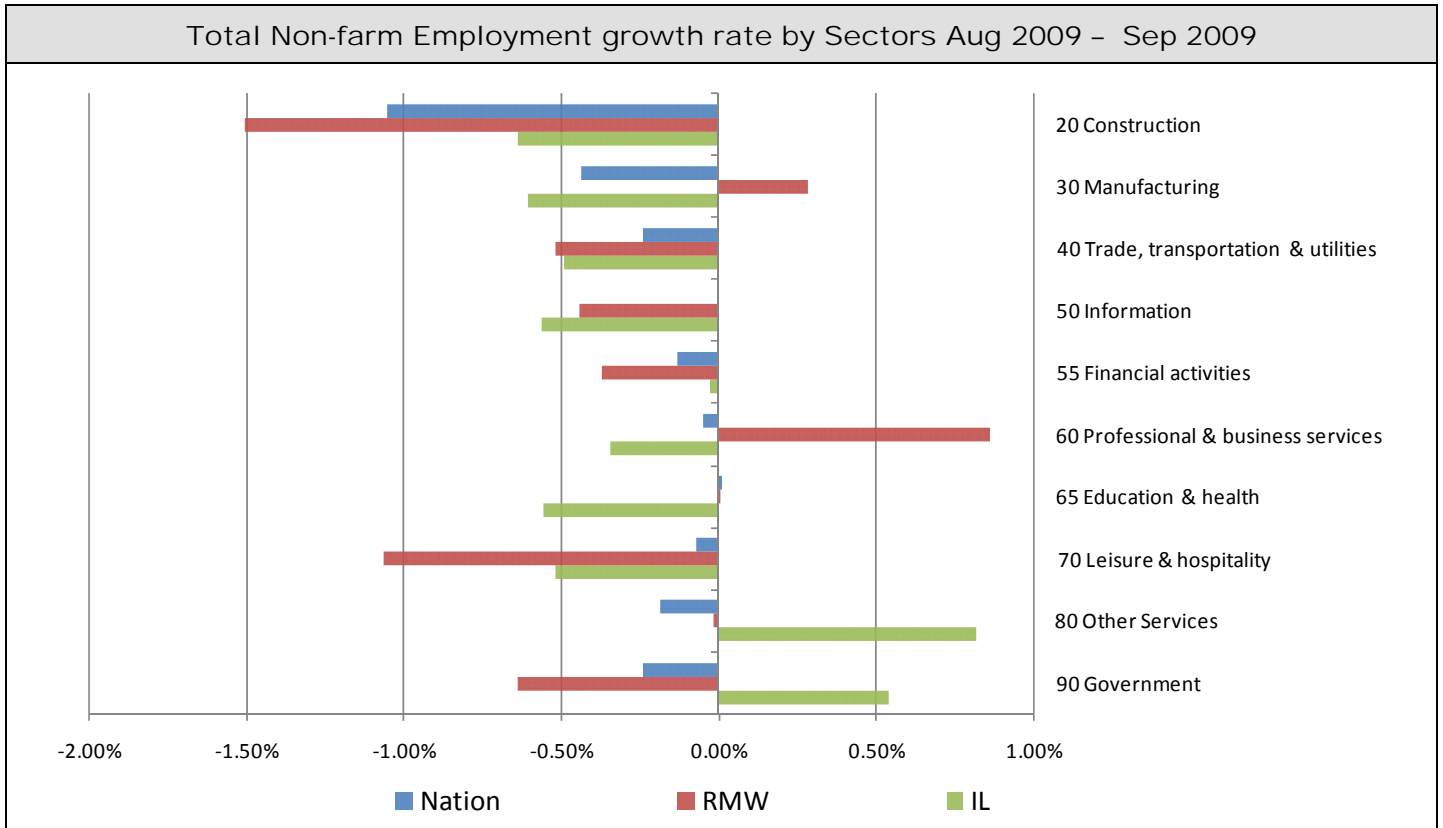
Total Non-farm Employment and Employment Index

	Aug 2009 Number of Jobs	Current Index to Jan 1990	Previous Peak Index to Jan 1990	Changes in Jobs since Jan 1990	Changes in Jobs since Pervious Peak
Nation	130,947,000	119.97	126.57 (Dec-2007)	21,796,000	-7,205,000
RMW	18,654,500	109.20	119.44 (Jun-2000)	1,571,500	-1,752,100
Illinois	5,634,700	107.01	115.08 (Nov-2000)	369,100	-424,700

Last 12 months Total Non-farm Employment growth rate Oct 2008 - Sep 2009



By employment sector:

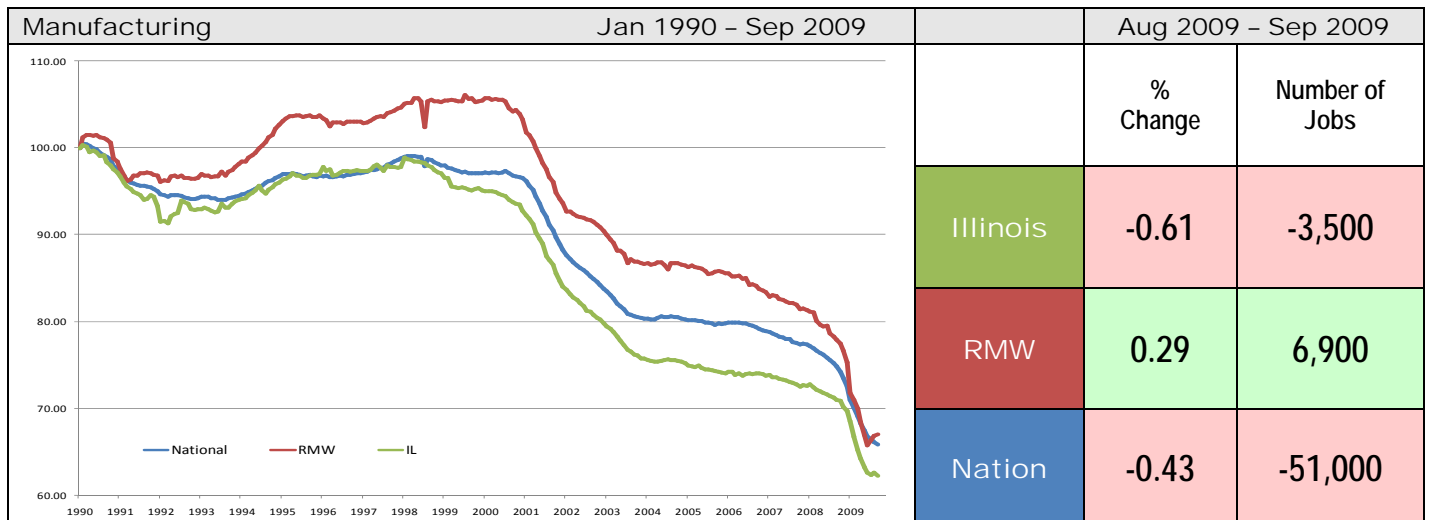
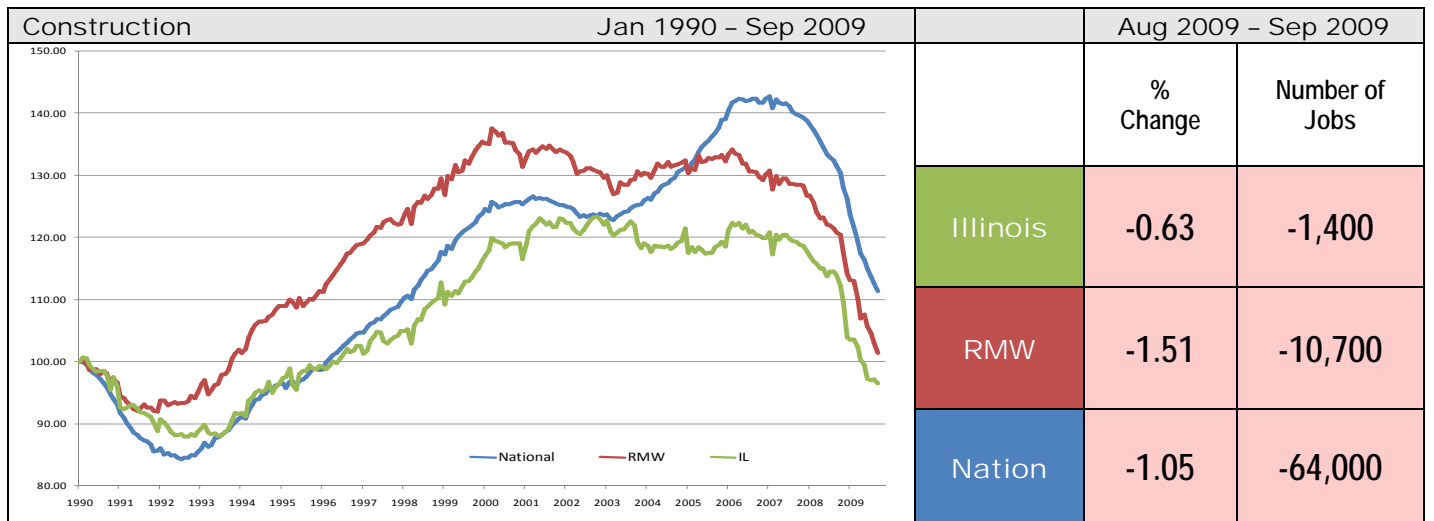


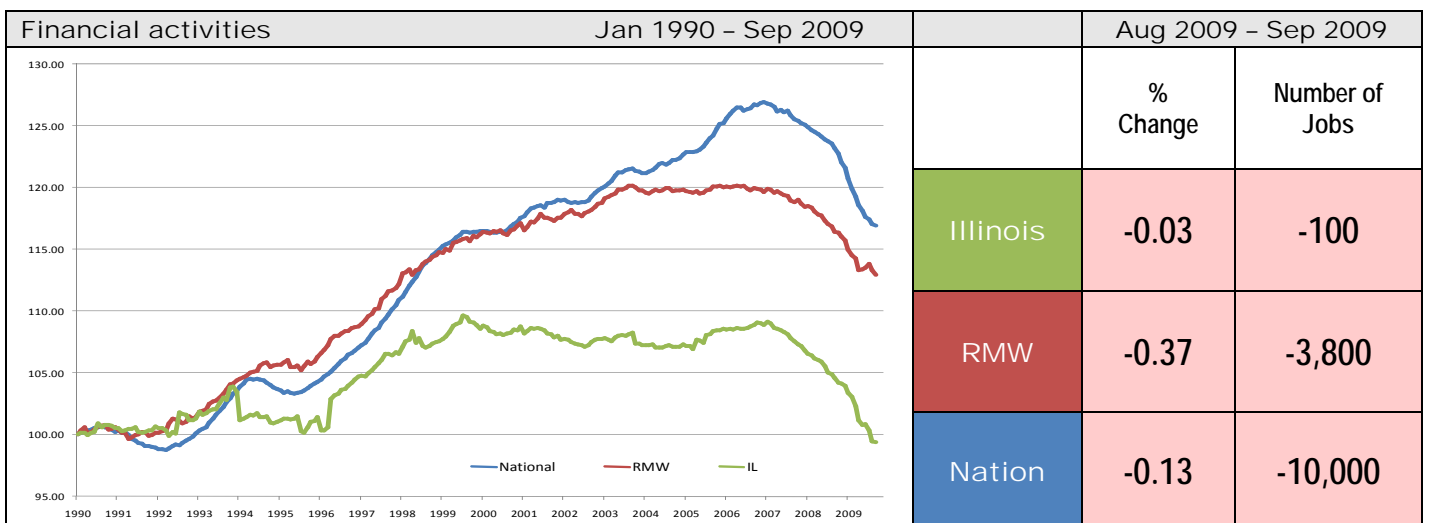
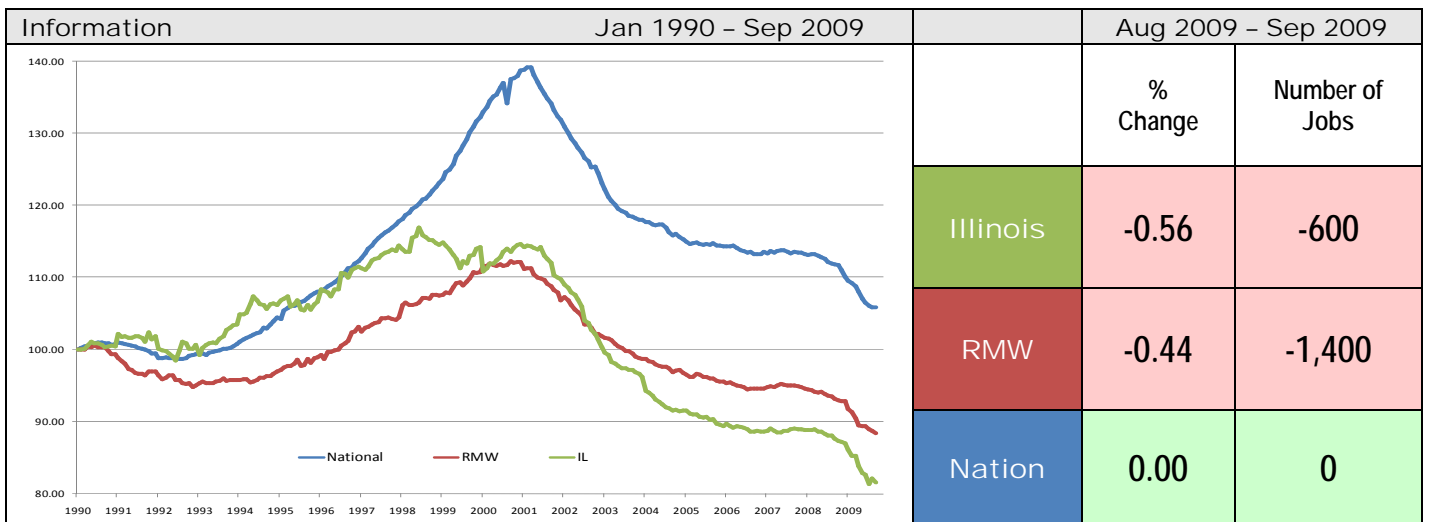
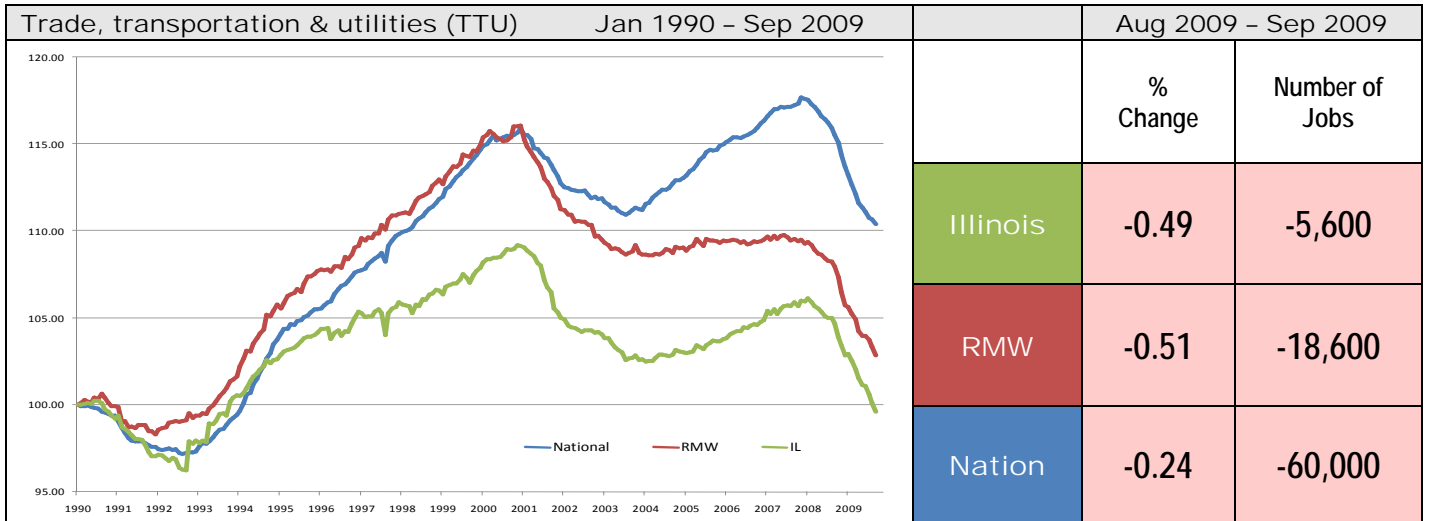
Sector notes

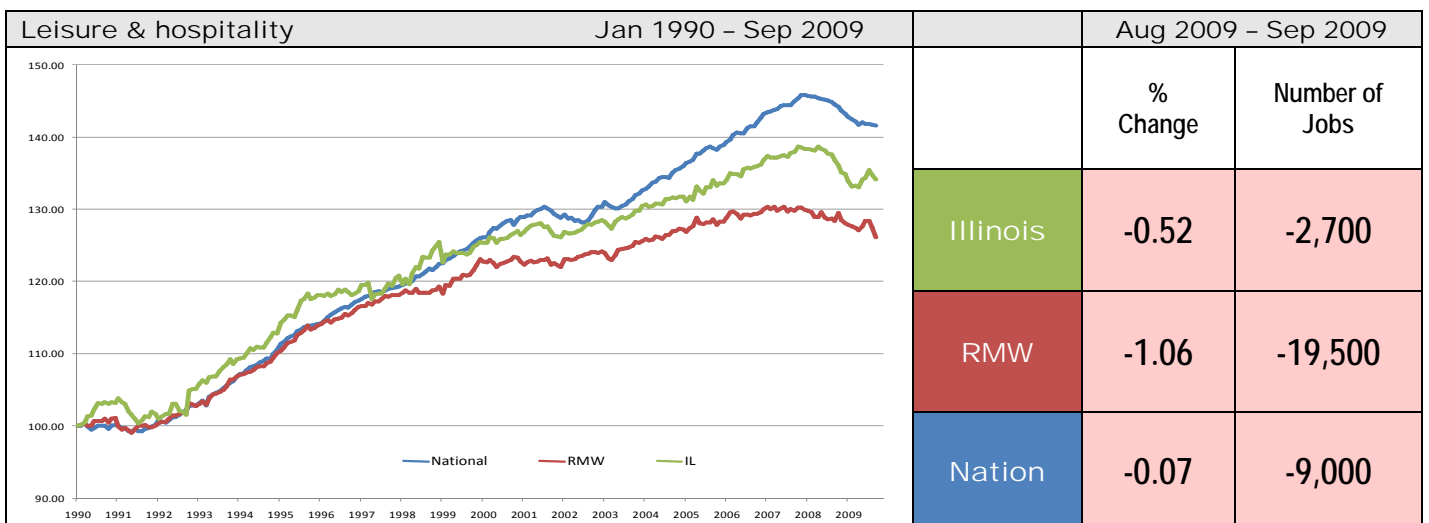
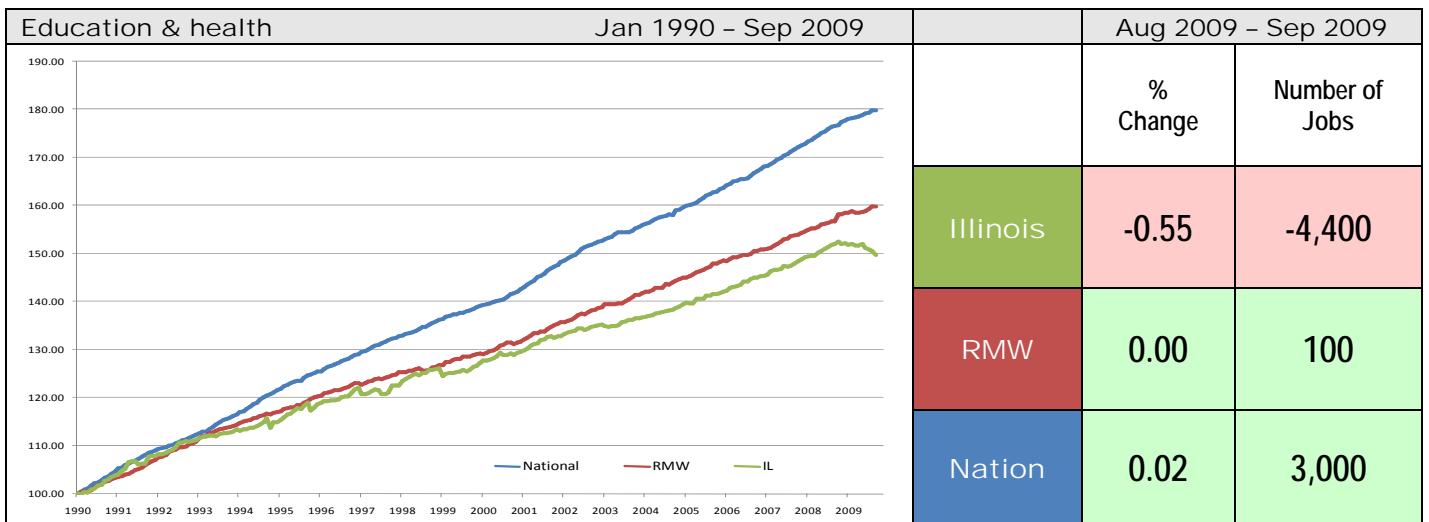
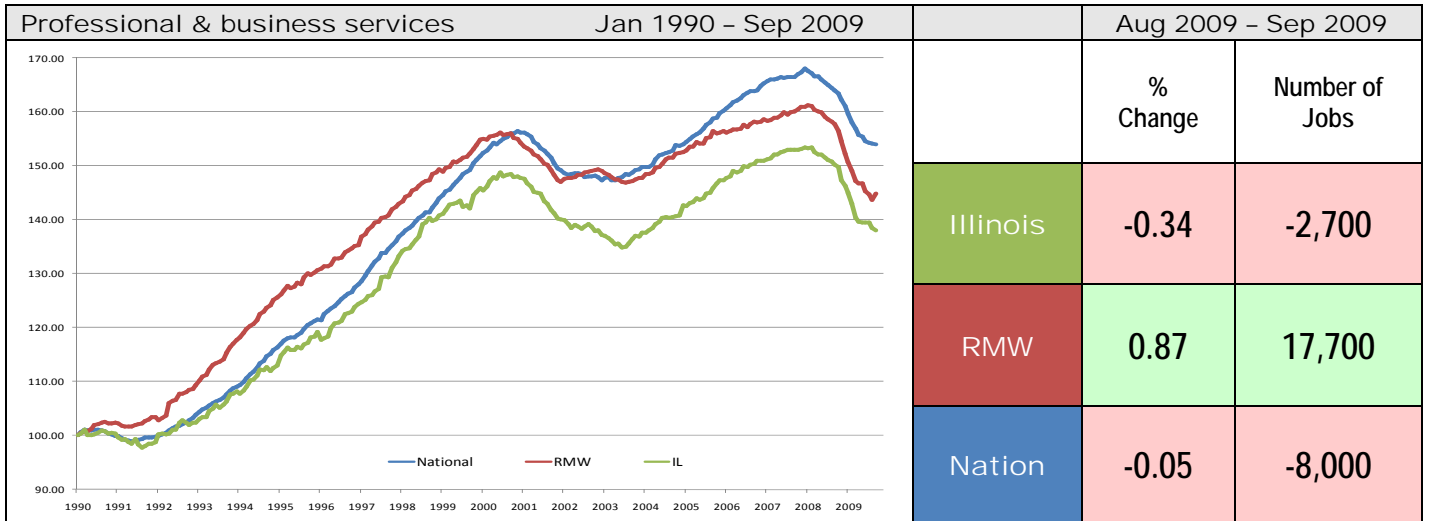
- Illinois posted a job decline of -0.25% in September 2009. Eight out of ten sectors recorded net losses. Compared to August 2009, relative performance gains were recorded for Other Services (-1.08% to 0.82%), Financial activities (-0.94% to -0.03%), and Government (-0.12% to 0.54%), whereas Information (0.85% to -0.03%), Manufacturing (0.45% to -0.61%), and Construction (0.14% to -0.63%), faced major losses in performance.
- In September at the national level, only Education and Health added jobs:
 - Education and Health Services: 3,000 (0.02%)
- Major losses at the national level in September were:
 - Construction: -64,000 (-1.05%)
 - Trade transportation& utilities: -60,000 (-0.24%)
 - Government: -53,000 (-0.24%)
- For Illinois, two sectors posted job gains in September
 - Government: 4,600 (0.54%)
 - Other Services: 2,100 (0.82%)
- Following are the major sectors that lost jobs in September for Illinois:
 - Trade transportation& utilities: -5,600 (-0.49%)
 - Education and Health Services: -4,400 (-0.55%)
 - Manufacturing: -3,500 (-0.61%)
- For Illinois, five sectors have employment below 1990 levels. They are Manufacturing with -348,800 jobs less, Information with -24,000 jobs less, Construction with -8,100 jobs less, Trade transportation& utilities with -4,400 jobs less, and Financial activities with -2,200 jobs less, than their 1990 employment levels, respectively.

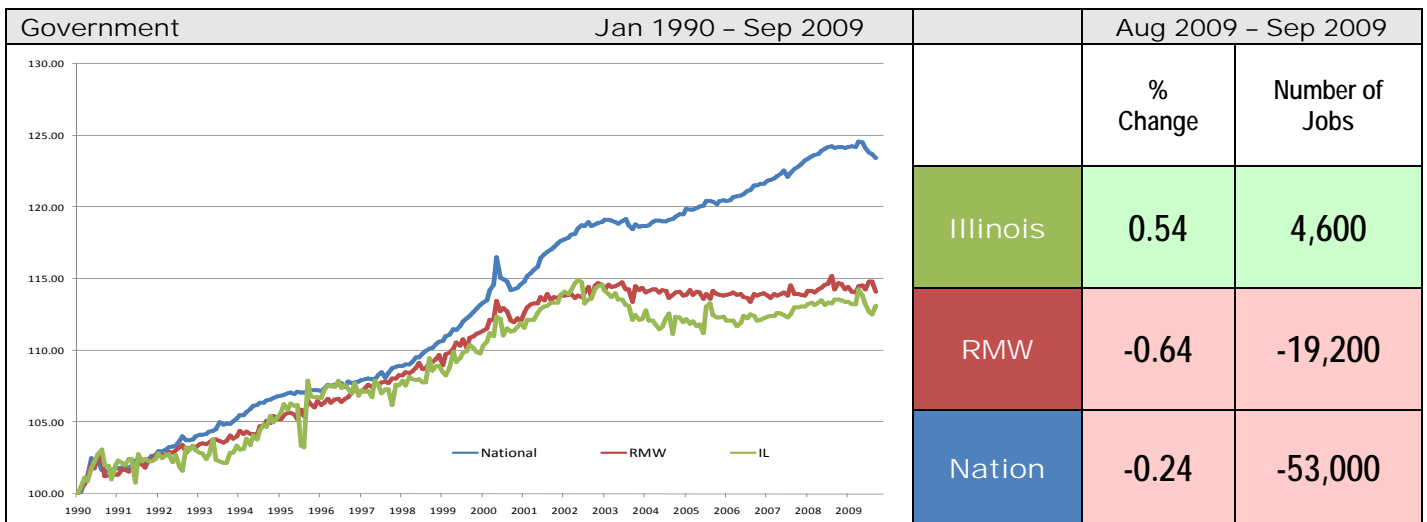
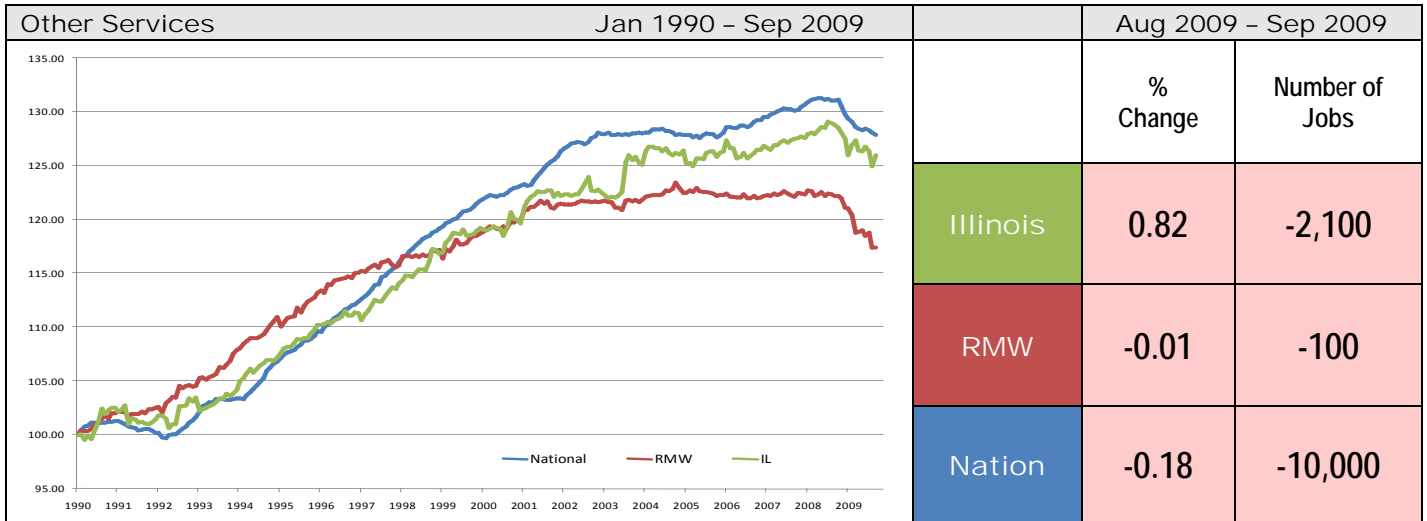
Total Non-farm Employment growth rate by sector Jan 1990 - Sep 2009

	Illinois				RMW	Nation
	vs. RMW	vs. Nation	Number of Jobs	Rate %	Rate %	Rate %
Construction	-	-	-8,100	-3.56	1.42	11.36
Manufacturing	-	-	-348,800	-37.77	-32.97	-34.16
Trade, transportation & utilities (TTU)	-	-	-4,400	-0.38	2.83	10.40
Information	-	-	-24,000	-18.38	-11.61	5.84
Financial activities	-	-	-2,200	-0.59	12.92	16.91
Professional & business services	-	-	217,200	38.05	44.89	53.99
Education & health	-	-	263,100	49.73	59.84	79.80
Leisure & hospitality	+	-	131,800	34.15	26.16	41.59
Other Services	+	-	53,400	26.00	17.39	27.86
Government	-	-	99,100	13.14	14.09	23.43









ABOUT: The Regional Economics Applications Laboratory (REAL) is a unit of the Institute of Government and Public Affairs of the University of Illinois. REAL undertakes impact and forecasting analyses of the Illinois and several Midwestern economies and is also engaged in similar analysis in several other countries including Brazil, Chile, Colombia, Japan. More information can be found at www.real.uiuc.edu.