


Illinois Job Index

Release 4/21/2010	Data Jan 1990 / Mar 2010	Issue 2010.4	www.real.illinois.edu
----------------------	-----------------------------	-----------------	-----------------------

Note: BLS revised its estimates for the number of jobs and seasonal adjustment method at the beginning of 2010.

For April Illinois Job Index, Illinois, RMW and the nation all gained jobs.

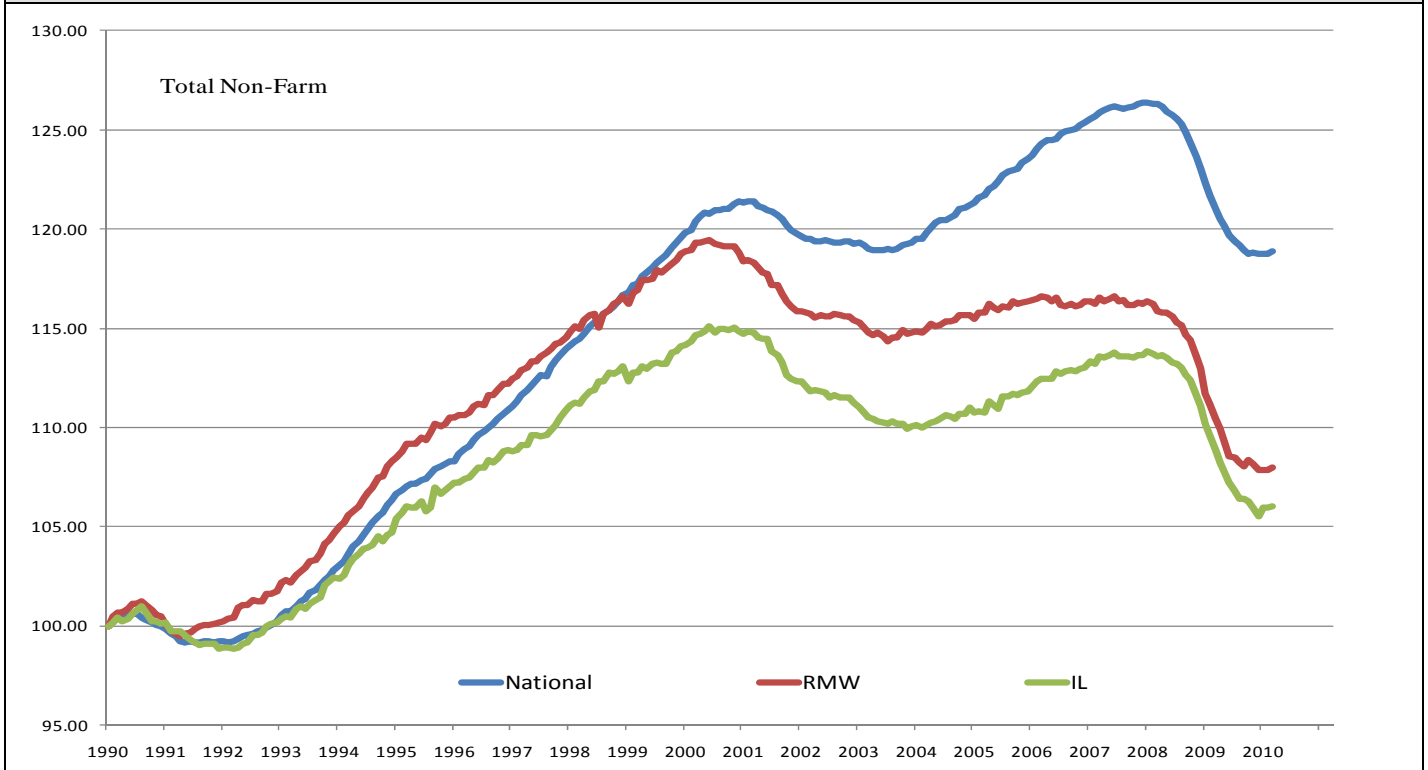
The monthly Illinois Job Index and MSA Report are issued monthly as tools for elected officials, policy leaders and the public. The objective is to enhance the understanding of the Illinois economy and business climate by comparing and measuring Illinois employment growth rates against those of the Rest of the Midwest (RMW: Indiana, Iowa, Michigan, Missouri, Ohio and Wisconsin) and the Nation. Data and analysis is provided by the Illinois Economic Observatory / Regional Economics Applications Laboratory, University of Illinois.

	April 2010 Positive		Feb 2010–Mar 2010		Last 12 months	
		Total non-farm employment	Growth Rate %	Number of Jobs	Growth Rate%	Number of Jobs
		Nation	0.13	162,000	-1.76	-2,320,000
		RMW	0.13	24,400	-2.25	-425,200
		Illinois	0.05	3,000	-2.59	-148,500

*REAL has estimated a *shadow unemployment rate*; this is calculated as the unemployment rate that would be observed if labor force participation rates matched the average for the 15-year period from 1990 to 2004.

Talking Points	
Illinois Notes	<ul style="list-style-type: none"> Illinois added 3,000 jobs at a rate of 0.05% in March 2010. So far, the state has had three months positive job growth in a row. The three-month moving average of jobs, a more stable measure of labor market, was up by 8,900 jobs. In March 2010, the Nation added 162,000 jobs at a rate of 0.13%, compared with a revised -14,000 job loss in February. This is the biggest gain for the nation in 3 years. The three-month moving average of jobs was up by 54,000 jobs per month. RMW added 24,400 jobs in March after a revised -3,600 job loss in February. The three-month moving average was up by 8,800 jobs per month. Since the beginning of the recession in Dec 2007, Illinois has posted negative job changes 24 times and positive job gains three times. The state of Illinois has lost -401,100 jobs in this recession. Five sectors in Illinois have employment levels in this month that are lower than January 1990 - Manufacturing, Construction, Information, Trade, transportation & utilities, and Financial activities. Over the last 12 months, Illinois shed 148,500 jobs at a rate -2.59%. Through March 2010, the cumulative job growth for Illinois, RMW and the Nation compared to January 1990 stood at 6.04%, 7.97%, and 18.87%, respectively.
Nation Notes	<ul style="list-style-type: none"> The nation added 162,000 jobs in March, not far from 184,000 jobs gain that economists expected. Since the last employment peak in December 2007, the nation has lost 8,201,000 jobs. However, for RMW and Illinois, they have not yet recovered from their respective peaks in 2000. Since December 2007, the nation has posted monthly negative growth for 24 of the months with average monthly growth rate -0.22%; the average growth rate for 2007 was 0.07%.

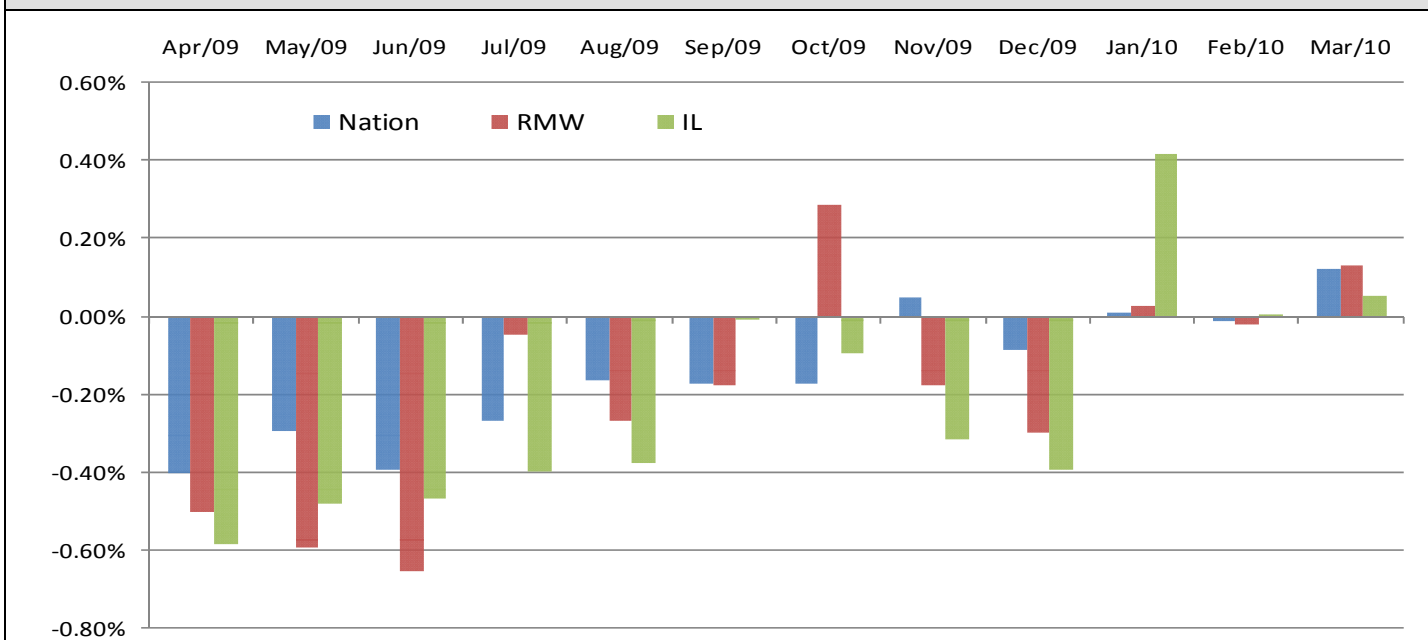
Total Non-farm Employment growth rate Jan 1990 - March 2010



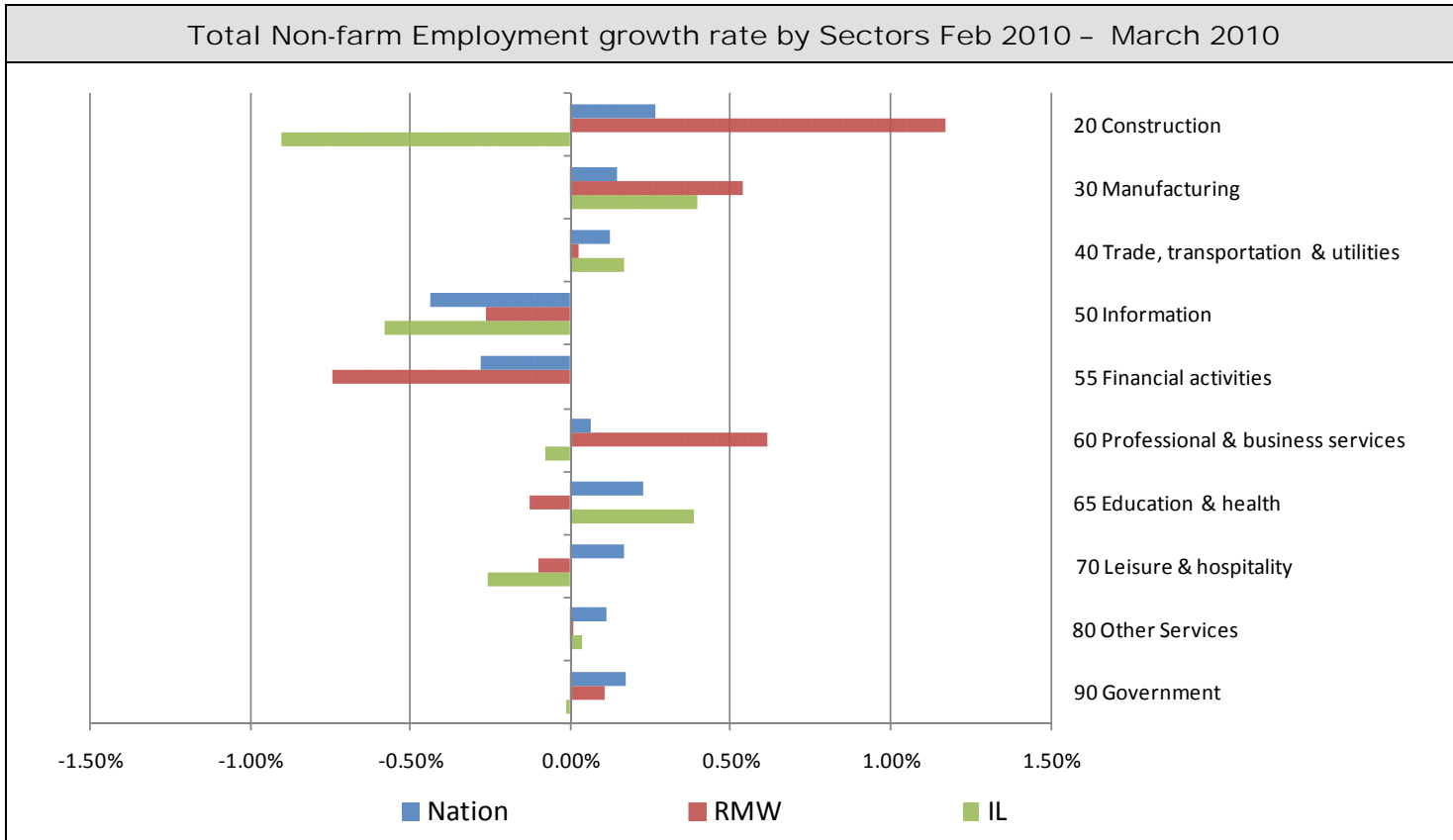
Total Non-farm Employment and Employment Index

	March 2010 Number of Jobs	Current Index to Jan 1990	Previous Peak Index to Jan 1990	Changes in Jobs since Jan 1990	Changes in Jobs since Pervious Peak
Nation	129,750,000	118.87	126.57 (Dec-2007)	20,599,000	-8,201,000
RMW	18,448,400	107.97	119.44 (Jun-2000)	1,362,000	-1,961,100
Illinois	5,584,900	106.04	115.08 (Nov-2000)	318,100	-474,600

Last 12 months Total Non-farm Employment Growth Rate April 2009 - March 2010



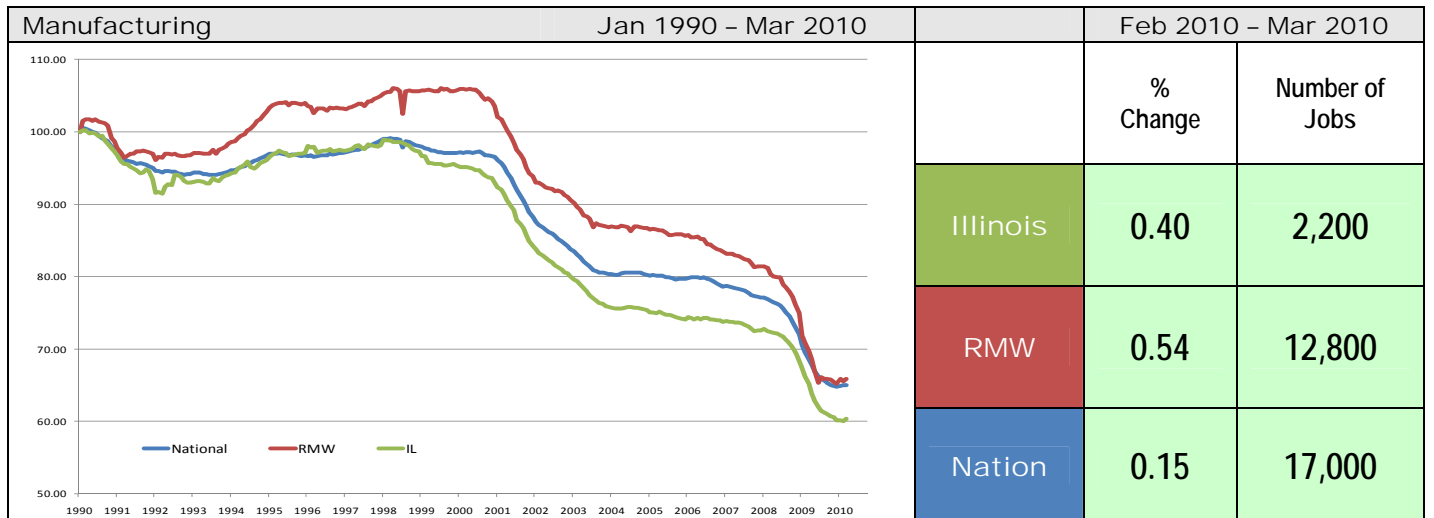
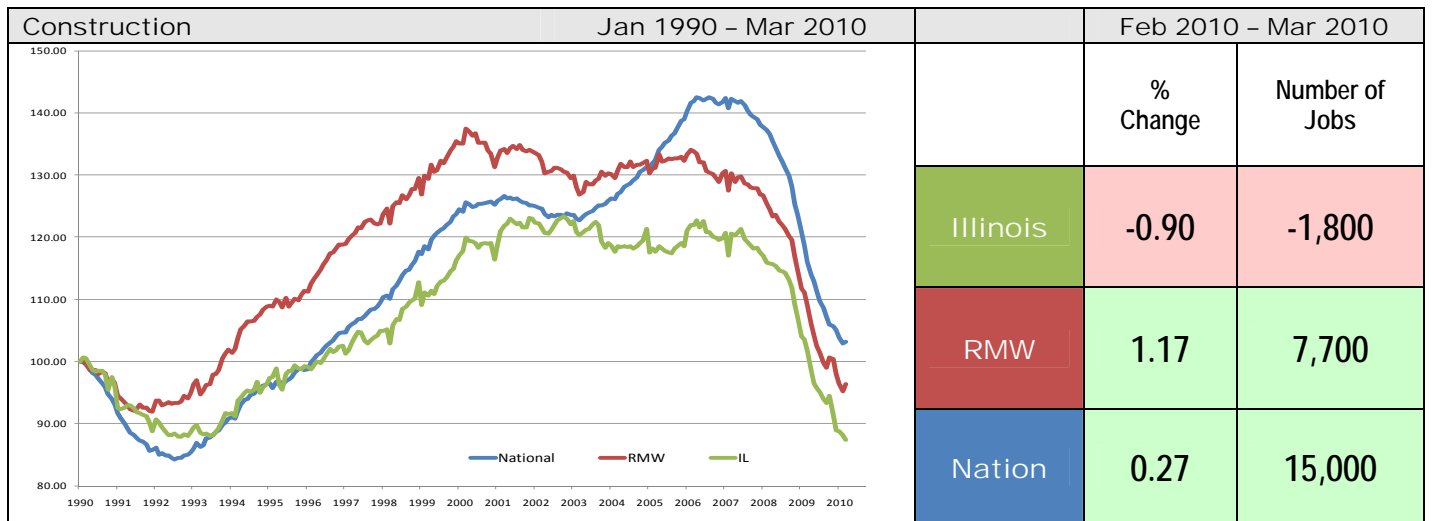
By employment sector:

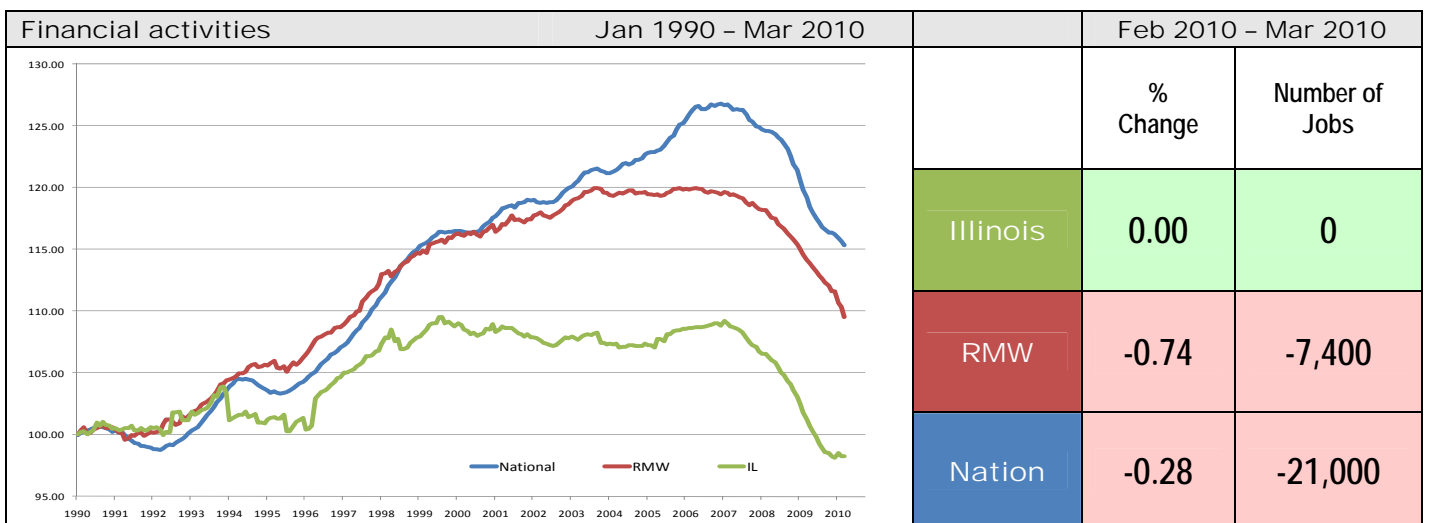
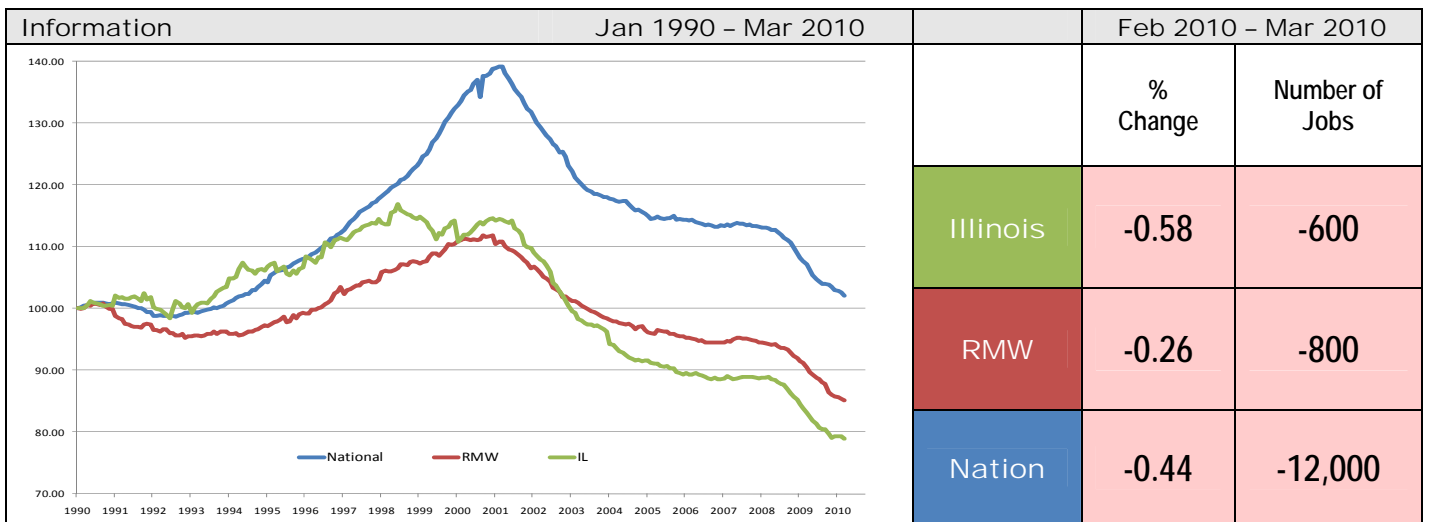
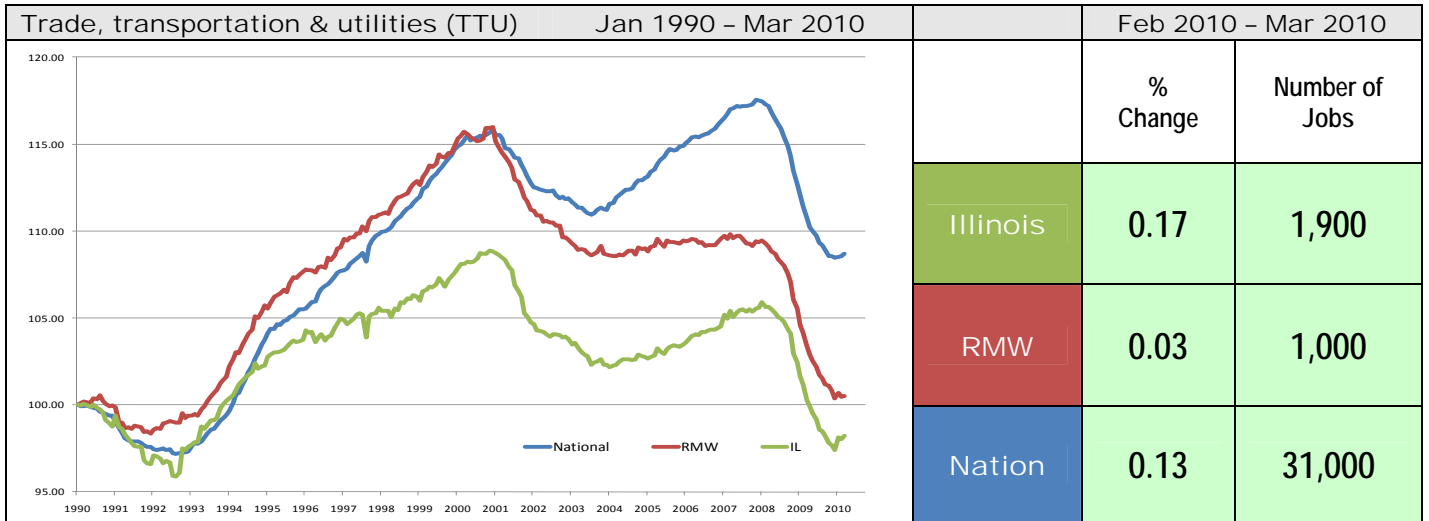


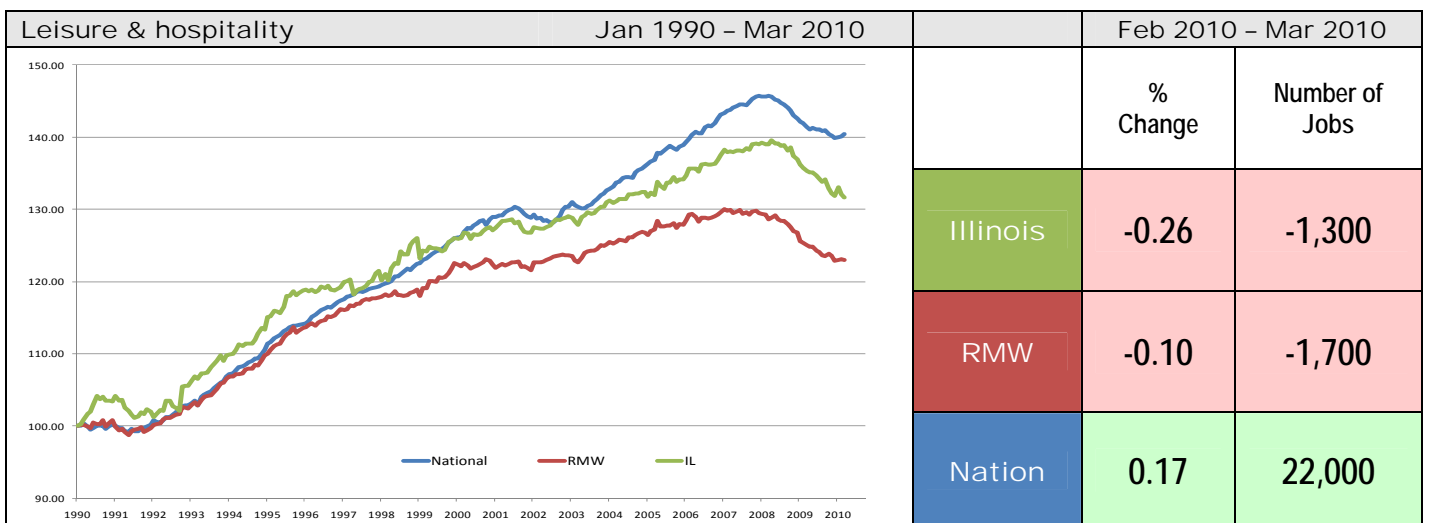
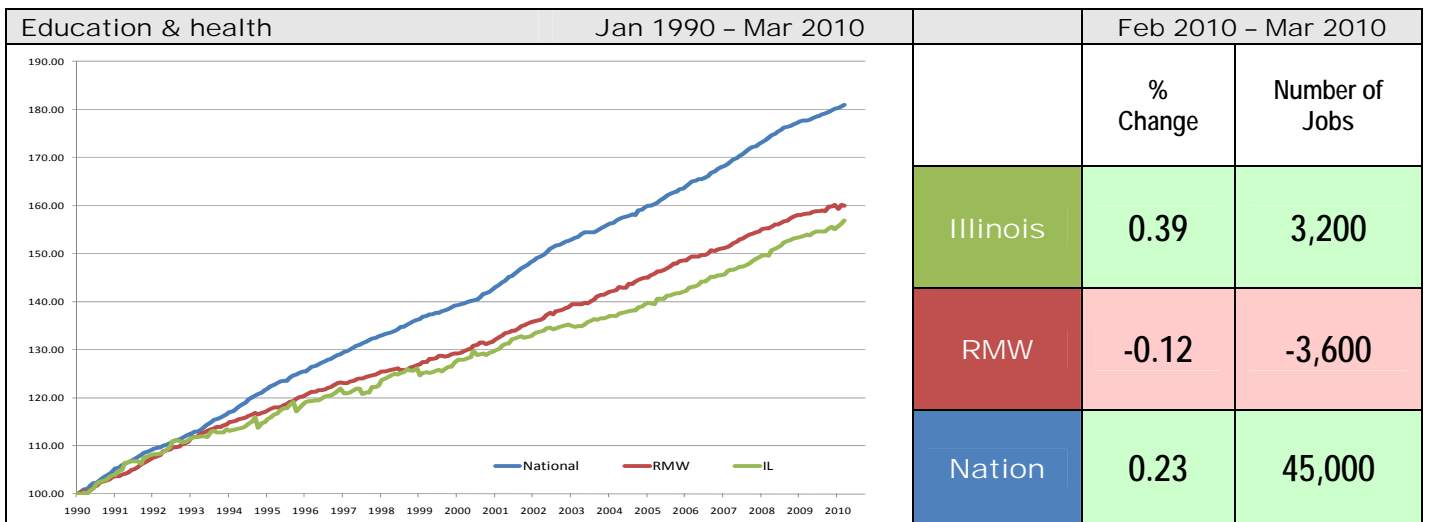
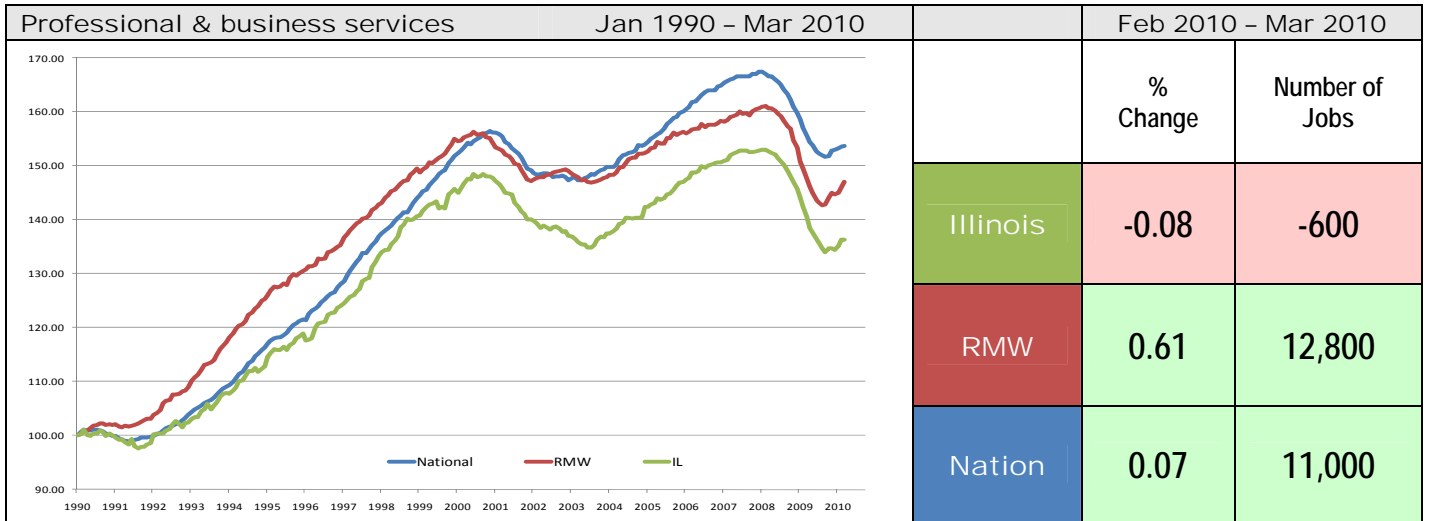
Sector notes	<ul style="list-style-type: none"> ▪ Illinois posted a positive growth of 0.05% in March 2010 by adding 3,000 jobs. Four out of ten sectors recorded net gains. Compared to February, Leisure and hospitality (-0.80% to -0.26%), Manufacturing (-0.09% to 0.40%), and Trade transportation & utilities (-0.06% and 0.17%) had relative performance gains, while Professional and business services (0.84% to -0.08%), and Information (0.00% to -0.58%) faced major losses in performance. ▪ In March at the national level, the top three job-gain sectors were: <ul style="list-style-type: none"> ○ Education and Health Services: 45,000 (0.23%) ○ Government: 39,000 (0.17%) ○ Trade transportation & utilities: 31,000 (0.13%) ▪ Major losses at the national level in March were recorded by: <ul style="list-style-type: none"> ○ Financial activities: -21,000 (-0.28%) ○ Information: -12,000 (-0.44%) ▪ For Illinois, the top three job-gain sectors in March were: <ul style="list-style-type: none"> ○ Education and Health Services: 3,200 (0.39%) ○ Manufacturing: 2,200 (0.40%) ○ Trade transportation & utilities: 1,900 (0.13%) ▪ Following are the major sectors that lost jobs in March for Illinois: <ul style="list-style-type: none"> ○ Construction: -1,800 (-0.90%) ○ Leisure & hospitality: -1,300 (-0.26%) ○ Information: -600 (-0.08%) ▪ For Illinois, five sectors have employment below 1990 levels. Compared to 1990 employment levels, Manufacturing has -365,700 fewer jobs, Construction is down -28,700 jobs, Information down -27,600 jobs, Trade transportation & utilities down -20,500 jobs, and Financial activities down -6,400 jobs.
--------------	--

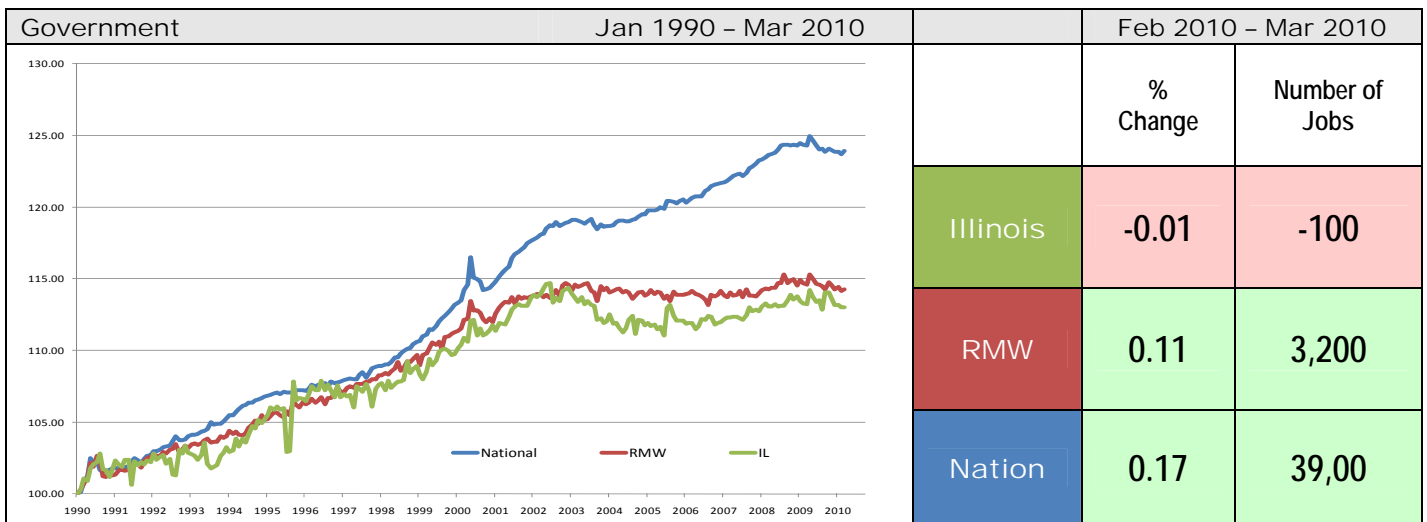
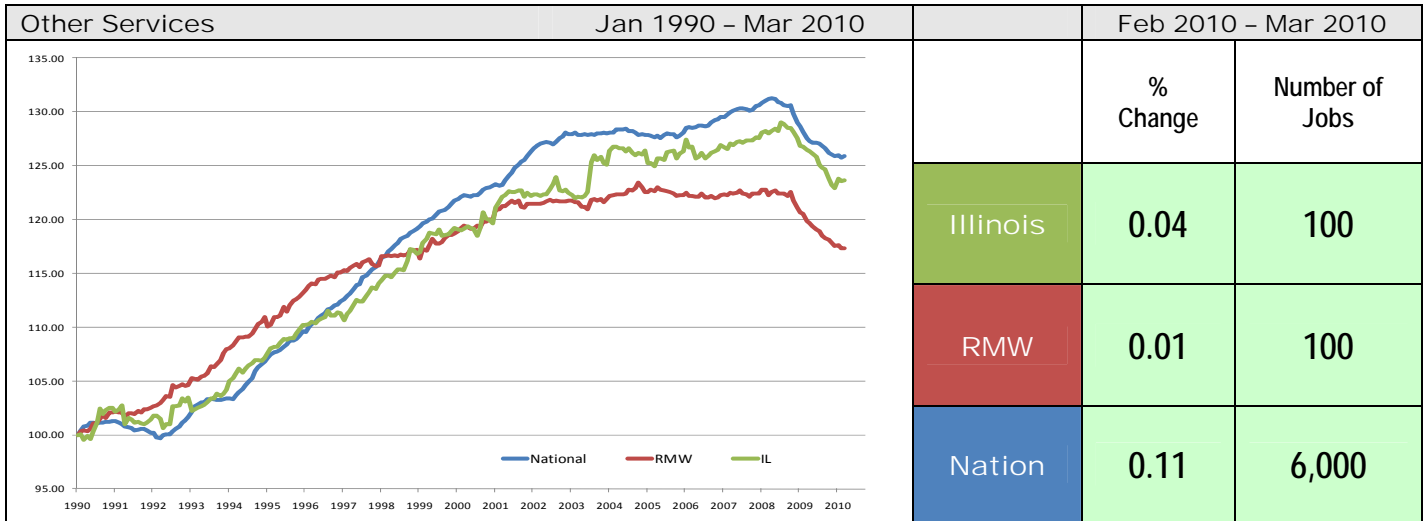
Total Non-farm Employment growth rate by sector Jan 1990 - March 2010

	Illinois				RMW	Nation
	vs. RMW	vs. Nation	Number of Jobs	Rate %	Rate %	Rate %
Construction	-	-	-28,700	-12.62	-3.68	3.14
Manufacturing	-	-	-365,700	-39.68	-34.09	-34.95
Trade, transportation & utilities (TTU)	-	-	-20,500	-1.78	0.49	8.67
Information	-	-	-27,600	-21.13	-14.86	2.10
Financial activities	-	-	-6,400	-1.72	9.55	15.35
Professional & business services	-	-	207,100	36.24	46.96	53.66
Education & health	-	-	300,800	56.86	59.99	81.02
Leisure & hospitality	+	-	121,800	31.70	23.03	40.38
Other Services	+	-	48,500	23.61	17.31	25.89
Government	-	-	98,200	13.00	14.26	23.94









ABOUT: The Regional Economics Applications Laboratory (REAL) is a unit of the Institute of Government and Public Affairs of the University of Illinois. REAL undertakes impact and forecasting analyses of the Illinois and several Midwestern economies and is also engaged in similar analysis in several other countries including Brazil, Chile, Colombia, and Japan. More information can be found at www.real.illinois.edu.