


# Illinois Job Index

Release 3/15/2010	Data Jan 1990 / Jan 2010	Issue 2010.2	www.real.illinois.edu
----------------------	-----------------------------	-----------------	-----------------------

Note: BLS revised its estimates for the number of jobs and seasonal adjustment method at the beginning of 2010.

**In February 2010 Illinois Job Index, Illinois has its first positive rating in two year. Nation and RMW are still losing jobs, but the rates are very small.**

The monthly Illinois Job Index and MSA Report are issued monthly as tools for elected officials, policy leaders and the public. The objective is to enhance the understanding of the Illinois economy and business climate by comparing and measuring Illinois employment growth rates against those of the Rest of the Midwest (RMW: Indiana, Iowa, Michigan, Missouri, Ohio and Wisconsin) and the Nation. Data and analysis is provided by the Illinois Economic Observatory / Regional Economics Applications Laboratory, University of Illinois.

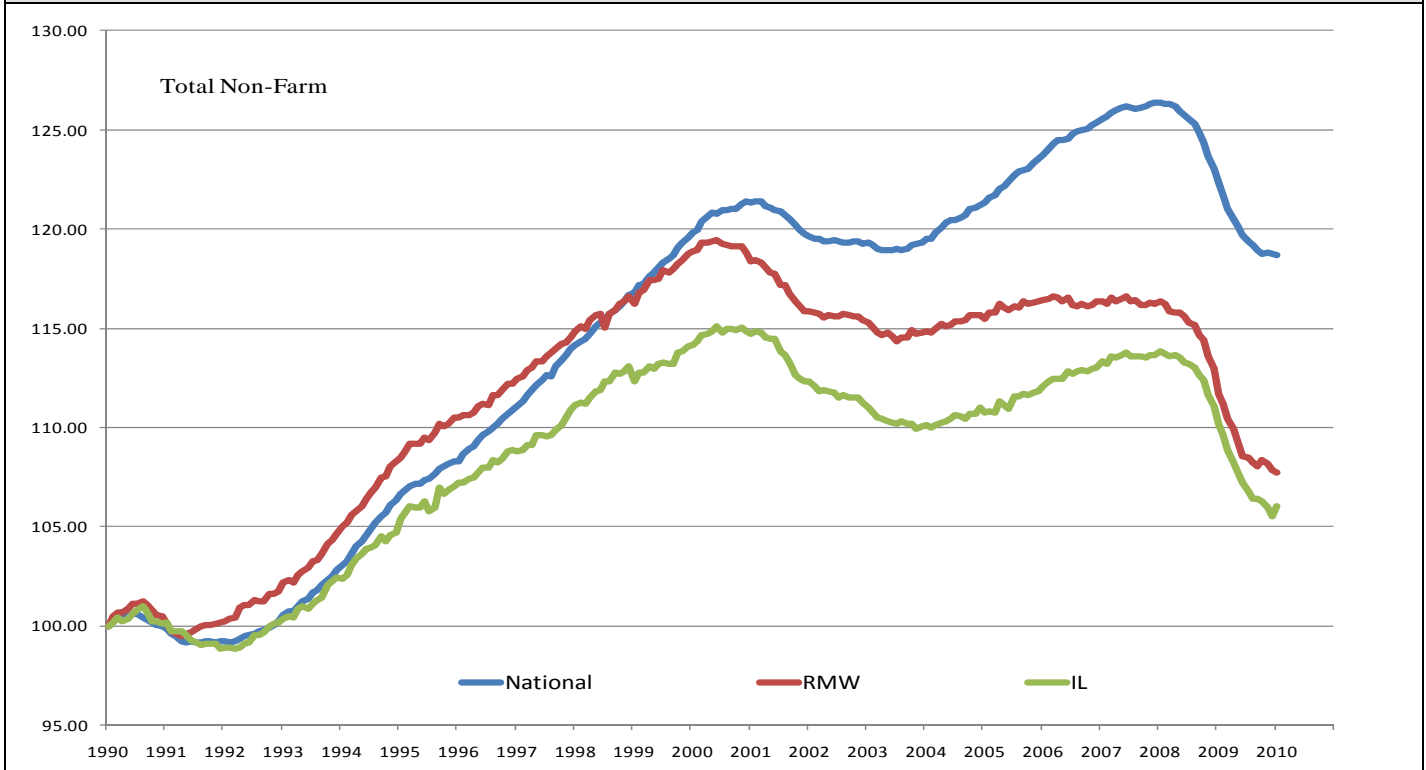
	Feb 2010 Positive		Dec 2009–Jan 2010		Last 12 months		Jan 2010
		Total non-farm employment	Growth Rate %	Number of Jobs	Growth Rate%	Number of Jobs	Shadow U.R. *
		Nation	-0.02	-26,000	-2.99	-3,987,000	12.2%
		RMW	-0.06	-11,200	-3.50	-668,000	14.7%
		Illinois	0.47	26,000	-3.79	-219,700	13.1%

\*REAL has estimated a *shadow unemployment rate*; this is calculated as the unemployment rate that would be observed if labor force participation rates matched the average for the 15-year period from 1990 to 2004.

## Talking Points

Illinois Notes	<ul style="list-style-type: none"> <li>▪ Illinois added 26,000 jobs at a rate of 0.47% in January 2010, compared to a revised 21,800 job loss in December 2009. It is the first time in two years that Illinois has positive job rating. However, January employment data are traditionally difficult to estimate, and it also affected by federal changes in data estimation and seasonal adjustment methods. The three-month moving average of employment, a more stable measure of labor market, was down by 5,300 jobs for Illinois.</li> <li>▪ In January 2010, the Nation cut 26,000 jobs at a rate of -0.02%, compared with a 109,000 job loss in December.</li> <li>▪ RMW shed 11,200 jobs in January after a revised 54,800 job loss in December.</li> <li>▪ Since the beginning of the recession in Dec 2007, Illinois has posted negative job changes 24 times and job gain twice, and the state has lost 401,800 jobs in this recession.</li> <li>▪ Five sectors in Illinois have employment levels in this month that are lower than January 1990 - Manufacturing, Information, Construction, Trade, transportation &amp; utilities, and Financial activities.</li> <li>▪ Over the last 12 months, Illinois shed 219,700 jobs at a rate -3.79%.</li> <li>▪ Through January 2010, the cumulative job growth for Illinois, RMW and the Nation compared to January 1990 stood at 6.03%, 7.75%, and 18.70%, respectively.</li> <li>▪ The shadow unemployment rates for the Illinois, RMW and the Nation were 13.1%, 14.7% and 12.2%, compared to official unemployment rates of 11.3%, 10.6% and 9.7%.</li> </ul>
Nation Notes	<ul style="list-style-type: none"> <li>▪ The nation lost 26,000 jobs in January; far fewer than the 109,000 jobs loss that was recorded last month. The unemployment rate fell from 10% to 9.7%.</li> <li>▪ Since the last employment peak in December 2007, the nation has lost 8,389,000 jobs. However, for RMW and Illinois, they have not yet recovered from their respective peaks in 2000.</li> <li>▪ Since December 2007, the nation has posted monthly negative growth for 24 months with average monthly growth rate -0.24%; the average growth rate for 2007 was 0.07%.</li> </ul>

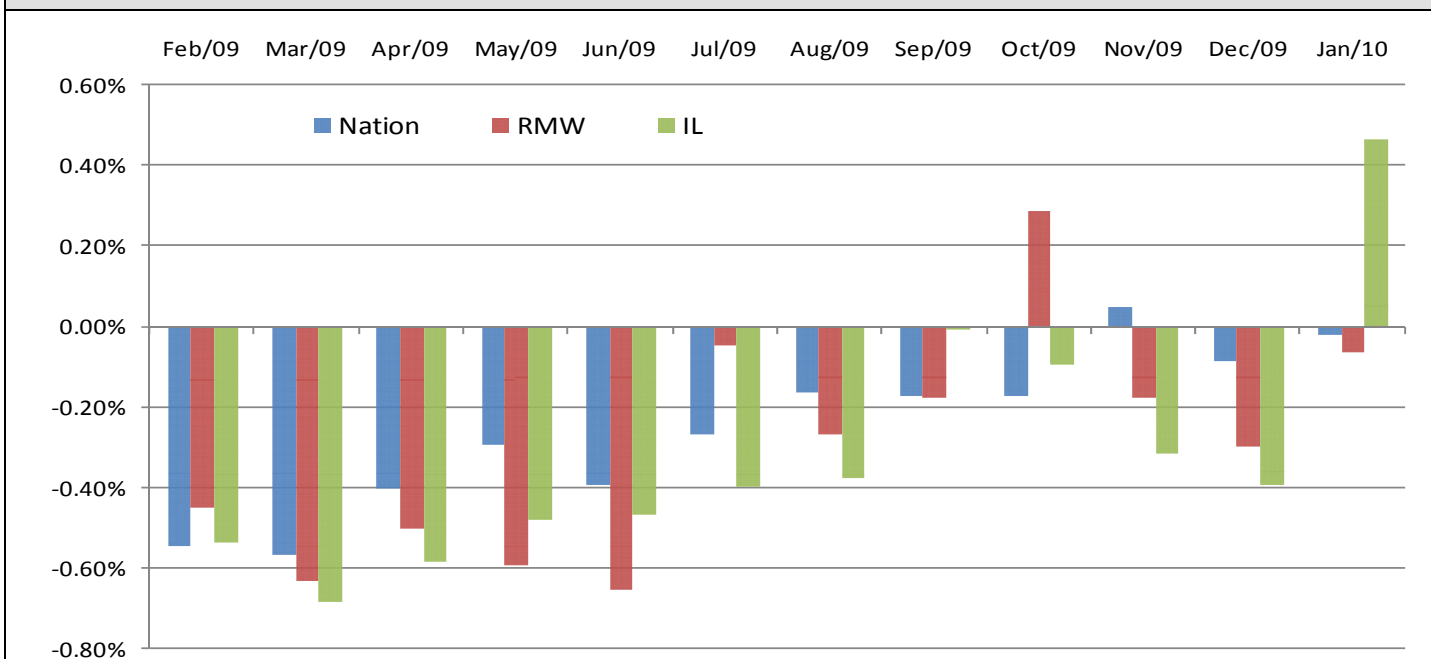
### Total Non-farm Employment growth rate Jan 1990 – Jan 2010



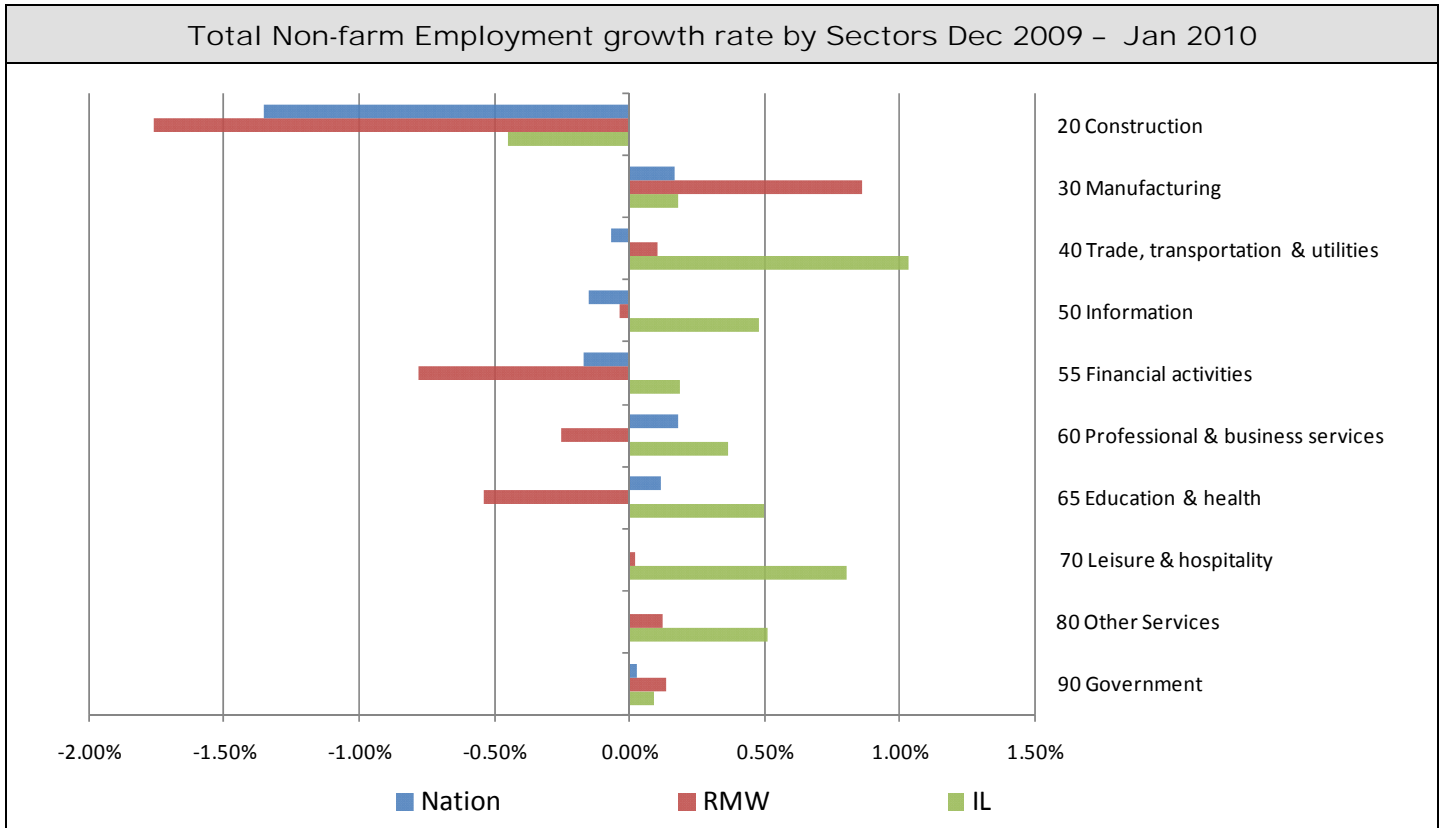
### Total Non-farm Employment and Employment Index

	Jan 2010 Number of Jobs	Current Index to Jan 1990	Previous Peak Index to Jan 1990	Changes in Jobs since Jan 1990	Changes in Jobs since Pervious Peak
<b>Nation</b>	129,562,000	118.70	126.57 (Dec-2007)	20,411,000	-8,389,000
<b>RMW</b>	18,410,800	107.75	119.44 (Jun-2000)	1,324,400	-1,998,700
<b>Illinois</b>	5,584,200	106.03	115.08 (Nov-2000)	317,400	-475,300

### Last 12 months Total Non-farm Employment Growth Rate Feb 2009 – Jan 2010



## By employment sector:

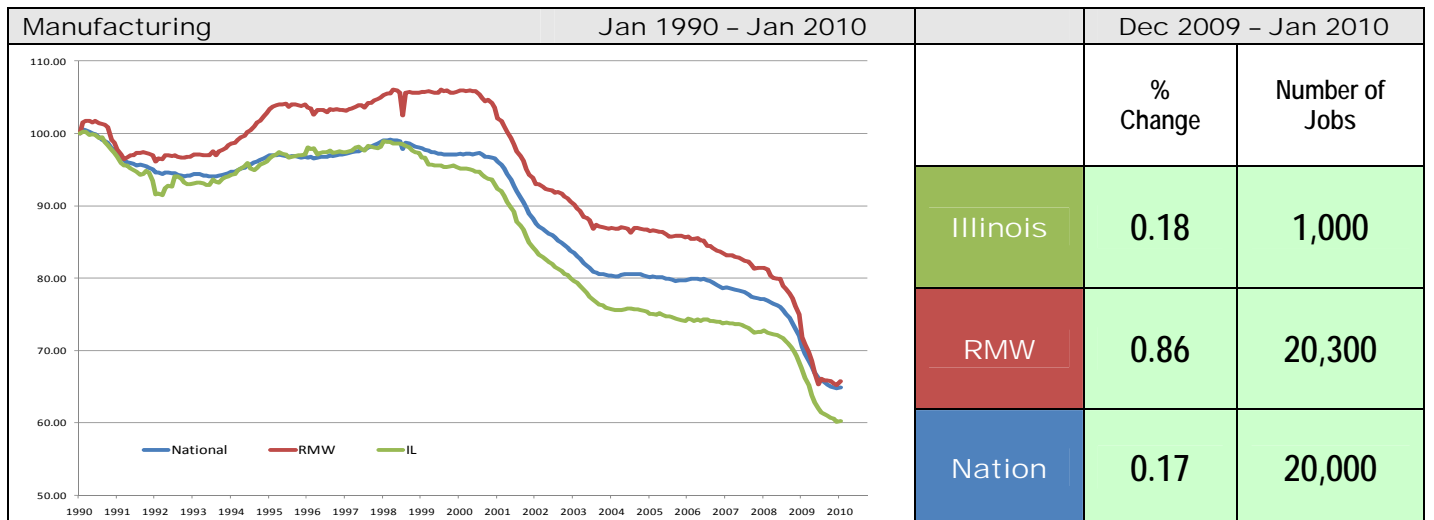
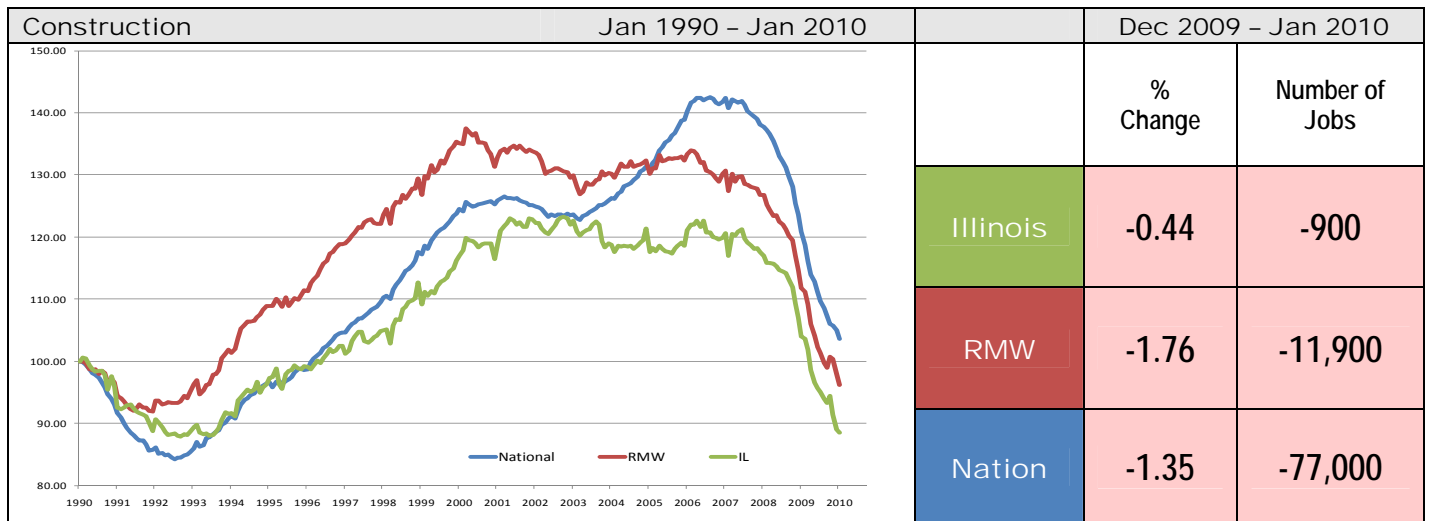


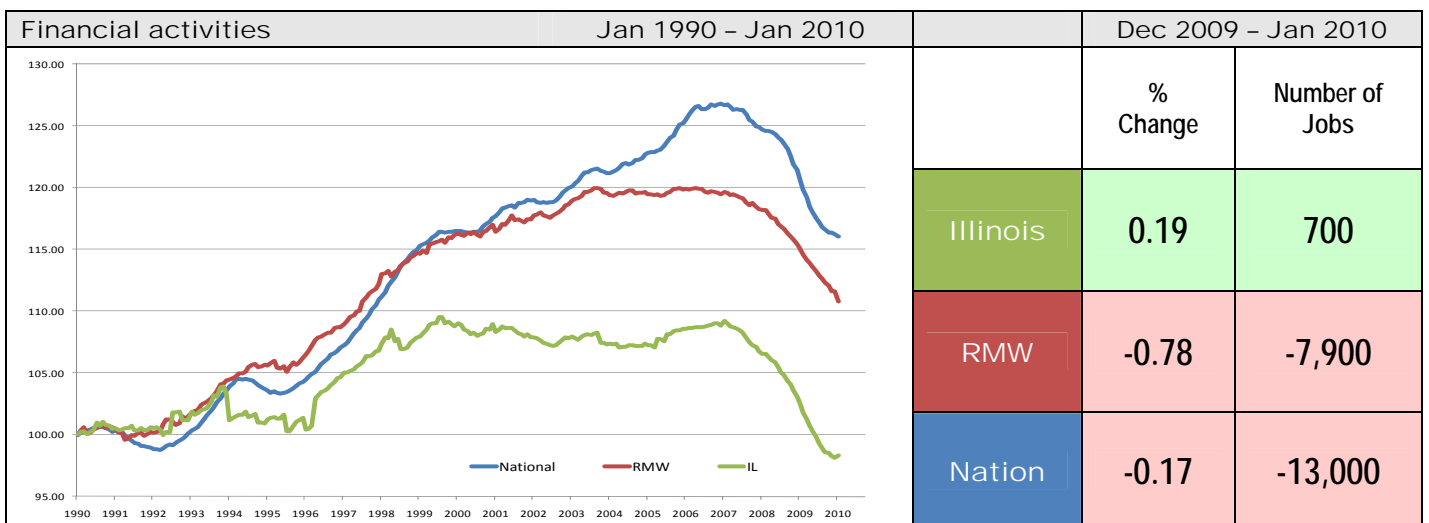
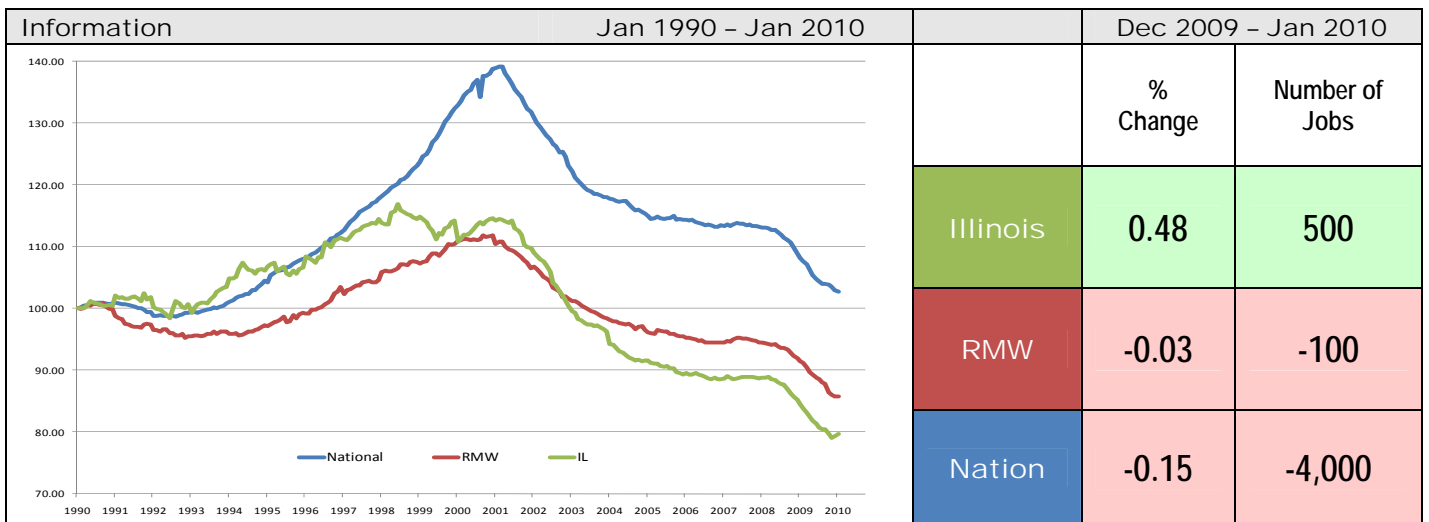
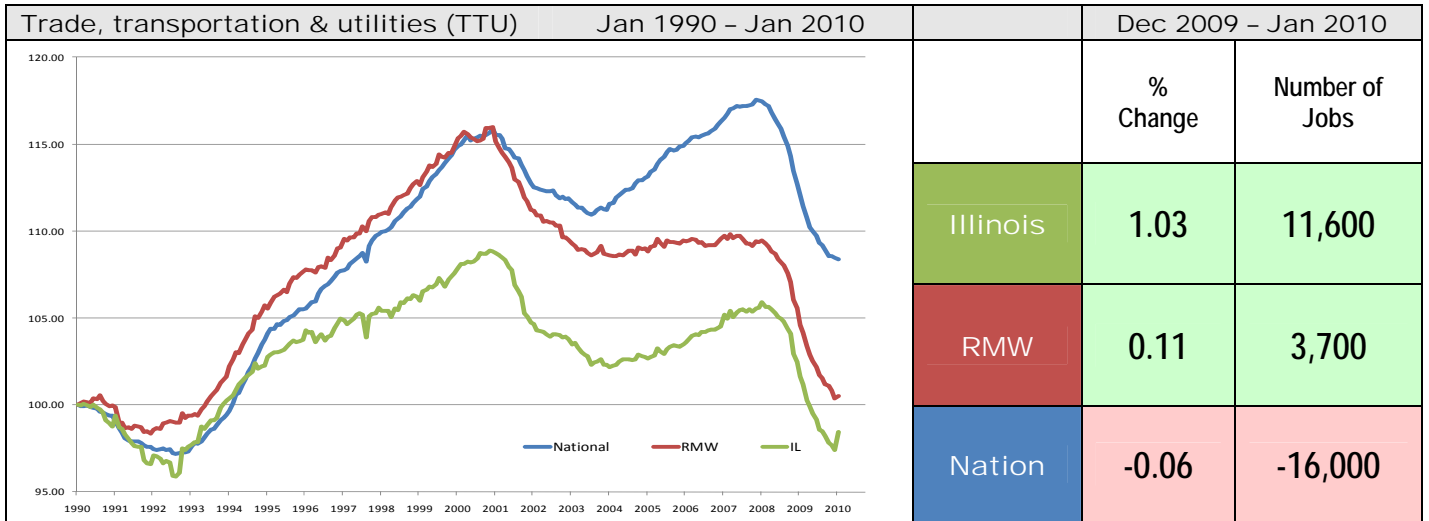
### Sector notes

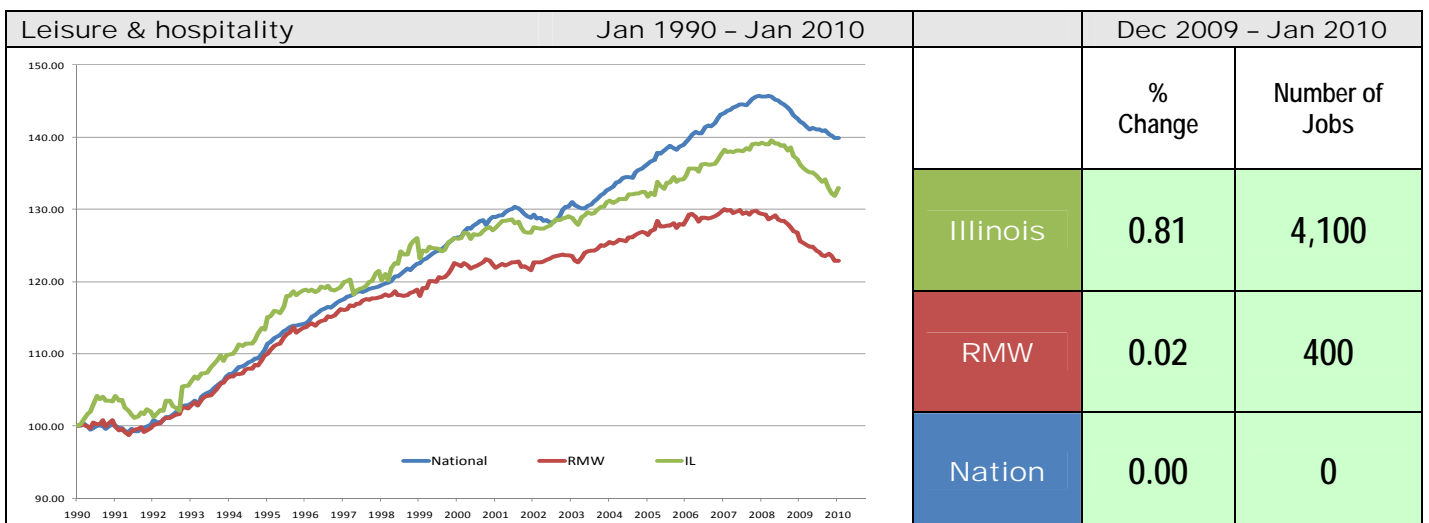
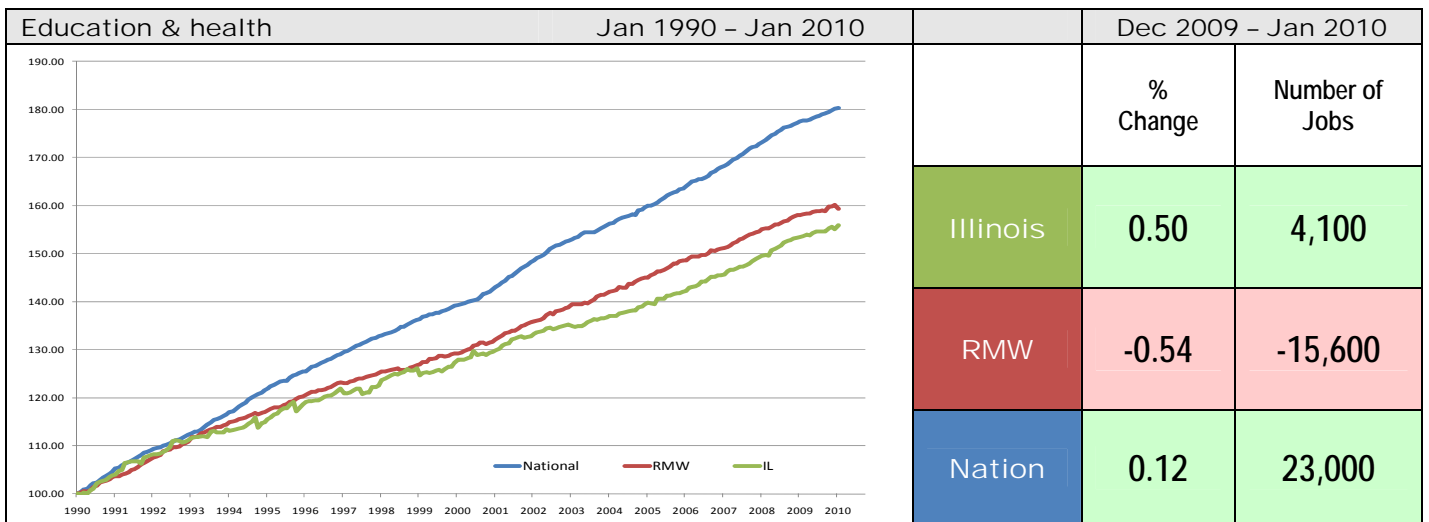
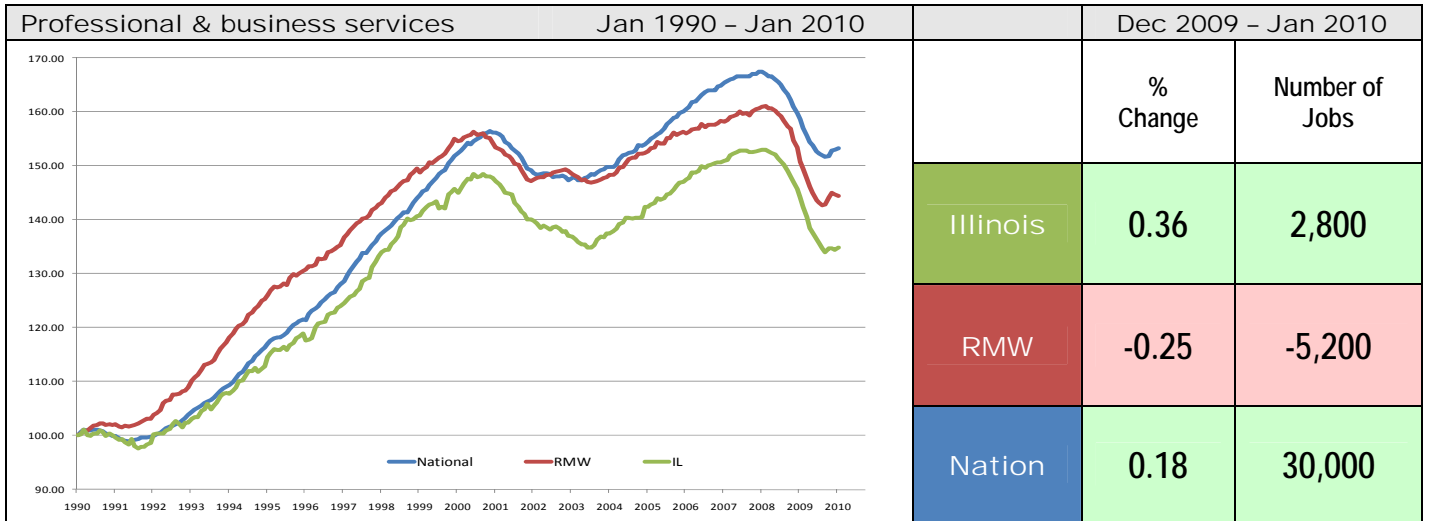
- Illinois posted a job increase of 0.47% in January 2010. Nine out of ten sectors recorded net gains. Compared to December 2009, all ten sectors have relative performance gains. The top three were Manufacturing (-2.65% to 0.44%), Trade transportation & utilities (-0.27% to 1.03%) and Leisure and hospitality (-0.22% to 0.81%).
- In January at the national level, top three job-gain sectors:
  - Professional and business services: 30,000 (0.18%)
  - Education and Health Services: 23,000 (0.12%)
  - Manufacturing: 20,000 (0.17%)
- Major losses at the national level in January were:
  - Construction: -77,000 (-1.35%)
  - Trade transportation & utilities: -16,000 (-0.06%)
  - Financial activities: -13,000 (-0.17%)
- For Illinois, top three job-gain sectors in January
  - Trade transportation & utilities: 11,600 (1.03%)
  - Leisure & hospitality: 4,100 (0.81%)
  - Education and Health Services: 4,100 (0.50%)
- Only one sector lost jobs in January for Illinois:
  - Construction: -900 (-0.44%)
- For Illinois, five sectors have employment below 1990 levels. They are Manufacturing with -366,500 fewer jobs, Information down -26,600 jobs, Construction down -26,000 jobs, Trade transportation & utilities down -18,000 jobs, and Financial activities down -6,300 jobs, than their 1990 employment levels, respectively.

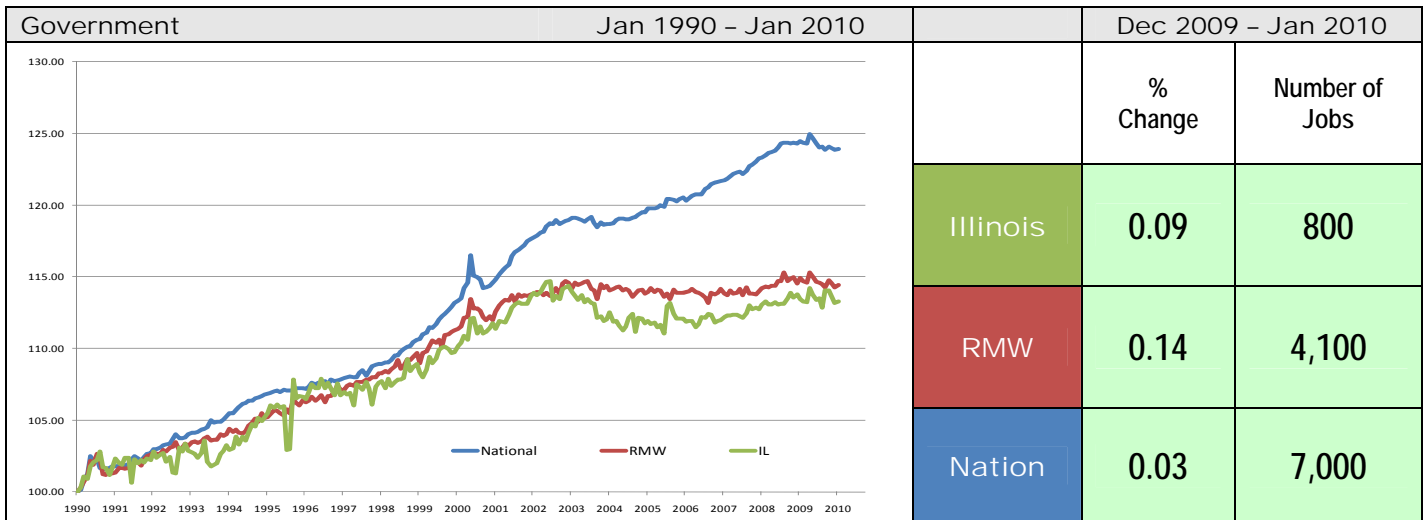
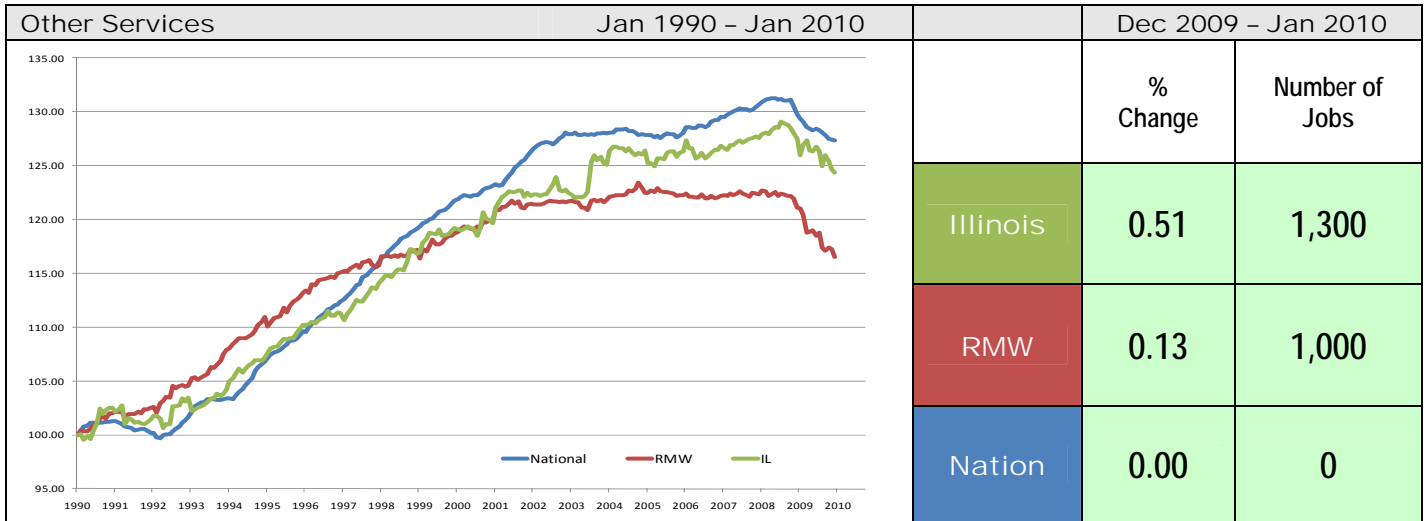
Total Non-farm Employment growth rate by sector Jan 1990 - Jan 2010

	Illinois				RMW	Nation
	vs. RMW	vs. Nation	Number of Jobs	Rate %	Rate %	Rate %
Construction	-	-	-26,000	-11.43	-3.75	3.63
Manufacturing	-	-	-366,500	-39.77	-34.23	-35.09
Trade, transportation & utilities (TTU)	-	-	-18,000	-1.56	0.49	8.39
Information	-	-	-26,600	-20.37	-14.21	2.77
Financial activities	-	-	-6,300	-1.69	10.77	16.03
Professional & business services	-	-	199,200	34.86	44.40	53.26
Education & health	-	-	295,900	55.94	59.26	80.38
Leisure & hospitality	+	-	126,700	32.98	22.88	39.84
Other Services	+	-	48,400	23.56	17.71	25.89
Government	-	-	100,100	13.26	14.43	23.89









**ABOUT:** The Regional Economics Applications Laboratory (REAL) is a unit of the Institute of Government and Public Affairs of the University of Illinois. REAL undertakes impact and forecasting analyses of the Illinois and several Midwestern economies and is also engaged in similar analysis in several other countries including Brazil, Chile, Colombia, Japan. More information can be found at [www.real.illinois.edu](http://www.real.illinois.edu).