


Illinois Job Index

Release 7/23/2010	Data Jan 1990 / June 2010	Issue 2010.7	www.real.illinois.edu
----------------------	------------------------------	-----------------	-----------------------

For June Illinois Job Index, Illinois, RMW and the nation all lost jobs. This is the first negative rating since Jan, 2010. Job recovery hits a wall.

The monthly Illinois Job Index and MSA Report are issued monthly as tools for elected officials, policy leaders and the public. The objective is to enhance the understanding of the Illinois economy and business climate by comparing and measuring Illinois employment growth rates against those of the Rest of the Midwest (RMW: Indiana, Iowa, Michigan, Missouri, Ohio and Wisconsin) and the Nation. Data and analysis is provided by the Illinois Economic Observatory / Regional Economics Applications Laboratory, University of Illinois.

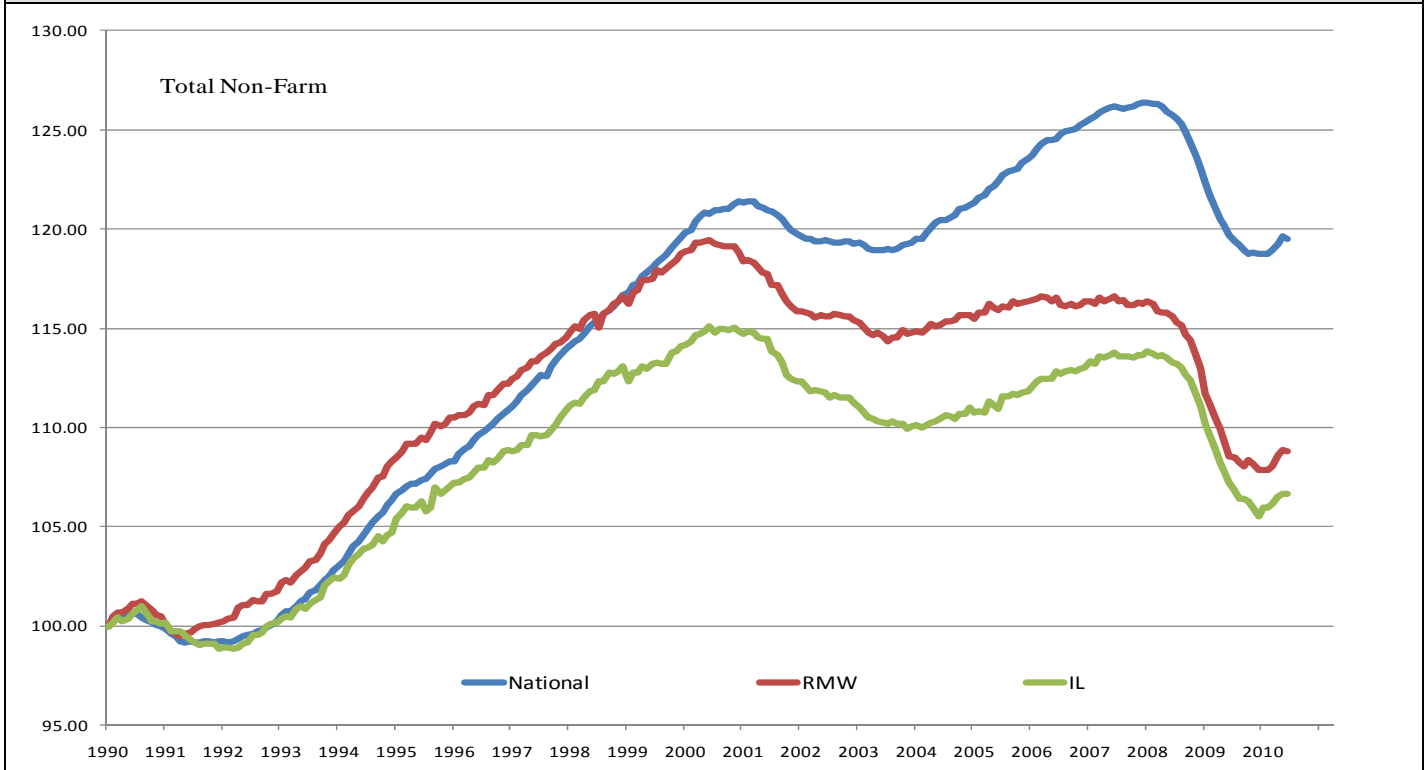
	July 2010 No Change	May 2010–June 2010		Last 12 months		June 2010	
		Total non-farm employment	Growth Rate %	Number of Jobs	Growth Rate%	Number of Jobs	Shadow U.R. *
	Nation		-0.10	-125,000	-0.13	-170,000	12.2%
	RMW		-0.06	-11,600	0.22	40,100	14.0%
	Illinois		0.00	-200	-0.50	-28,500	12.0%

*REAL has estimated a *shadow unemployment rate*; this is calculated as the unemployment rate that would be observed if labor force participation rates matched the average for the 15-year period from 1990 to 2004.

Talking Points

Illinois Notes	<ul style="list-style-type: none"> Illinois shed 200 jobs in June 2010 leaving employment unchanged compared with a revised 16,700 job gain in May. This is the first time Illinois did not add jobs this year, as modest hiring by businesses only partly offset the end of Census jobs. The three-month moving average of jobs, a more stable measure of labor market, was up by 9,100 jobs per month. In June 2010, the Nation cut 125,000 jobs at a rate of -0.10%, compared with a revised 431,000 job gain in May. The three-month moving average of jobs was up by 207,000 jobs per month. RMW cut 11,600 jobs in June after a revised 41,300 job gain in May. The three-month moving average was up by 42,400 jobs per month. Since the beginning of the recession in Dec 2007, Illinois has posted negative job changes 24 times and positive job gains five times through May, 2010. The state of Illinois now has a net loss of 368,200 jobs since the beginning of the recession in December 2007. Five sectors in Illinois have employment levels in this month that are lower than January 1990 – Construction, Manufacturing, Trade, transportation & utilities, Information and Financial activities. Over the last 12 months, Illinois shed 28,500 jobs at a rate -0.50%. The shadow unemployment rates for Illinois, RMW and the Nation were 12.0%, 14.0% and 12.2%, compared to official unemployment rates of 10.4%, 10.2% and 9.5%. Through June 2010, the cumulative job growth for Illinois, RMW and the Nation compared to January 1990 stood at 6.66%, 8.78%, and 19.53%, respectively.
Nation Notes	<ul style="list-style-type: none"> The nation lost 125,000 jobs in June. That was due primarily to the loss of 225,000 Census jobs that had swelled payrolls in May. Since the last employment peak in December 2007, the nation has lost 7,411,000 jobs. However, for RMW and Illinois, they have not yet recovered from their respective peaks in 2000. The nation has average growth rates for 2007, 2008, 2009 and first 6 month of 2010 were 0.07%, -0.22%, -0.30% and 0.11%, respectively.

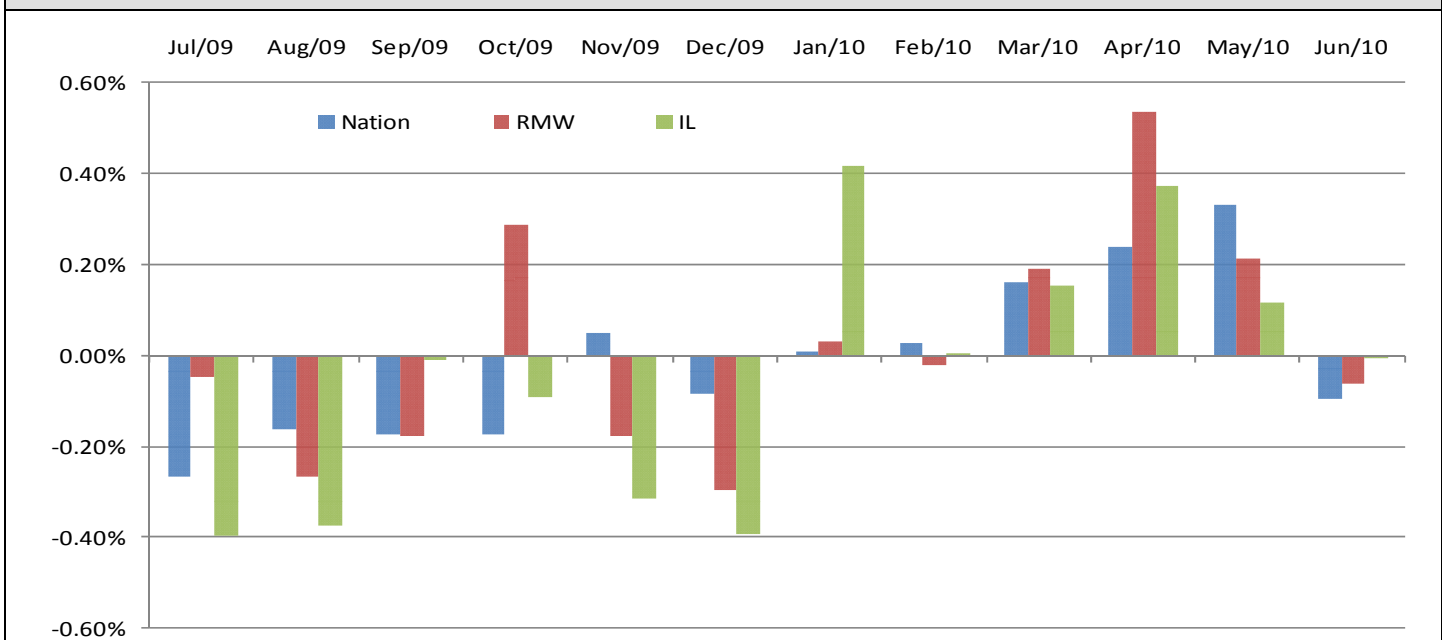
Total Non-farm Employment growth rate Jan 1990 - June 2010



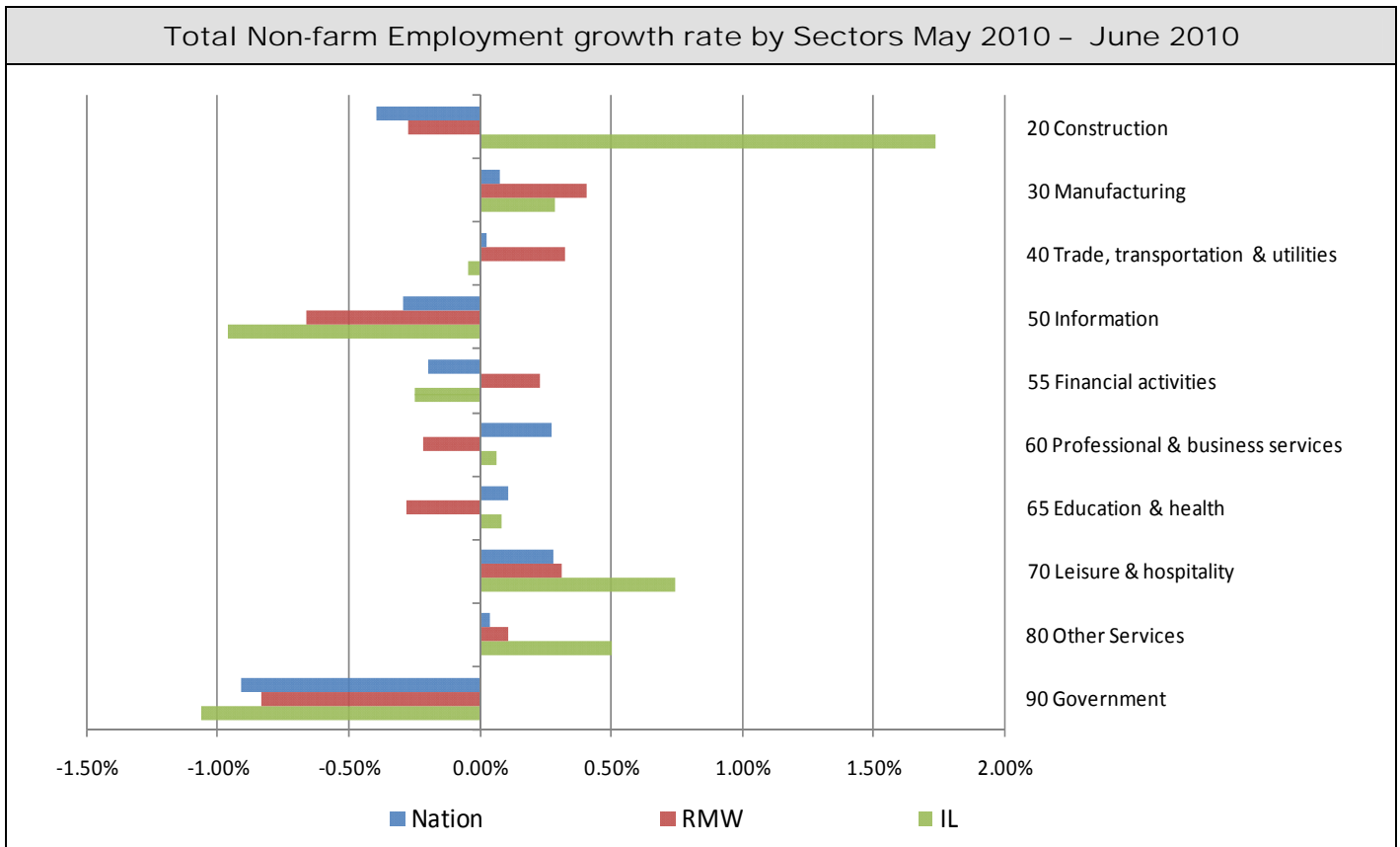
Total Non-farm Employment and Employment Index

	June 2010 Number of Jobs	Current Index to Jan 1990	Previous Peak Index to Jan 1990	Changes in Jobs since Jan 1990	Changes in Jobs since Pervious Peak
Nation	130,470,000	119.53	126.57 (Dec-2007)	21,319,000	-7,481,000
RMW	18,586,400	108.78	119.44 (Jun-2000)	1,500,000	-1,823,100
Illinois	5,617,800	106.66	115.08 (Nov-2000)	351,000	-441,700

Last 12 months Total Non-farm Employment Growth Rate July 2009 - June 2010



By employment sector:

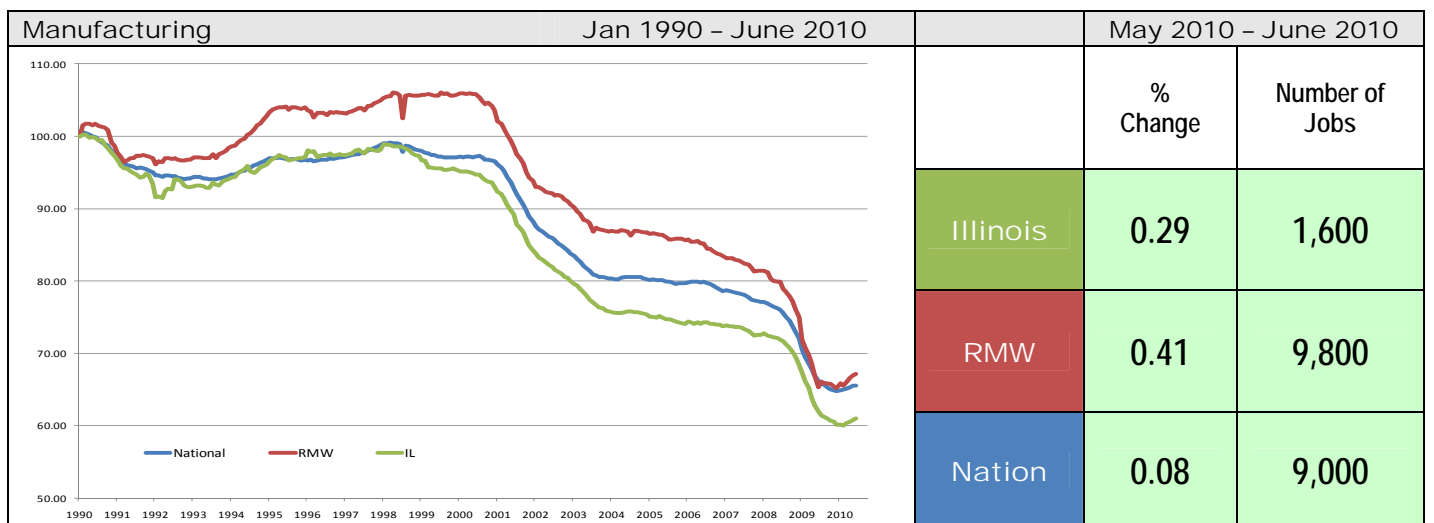
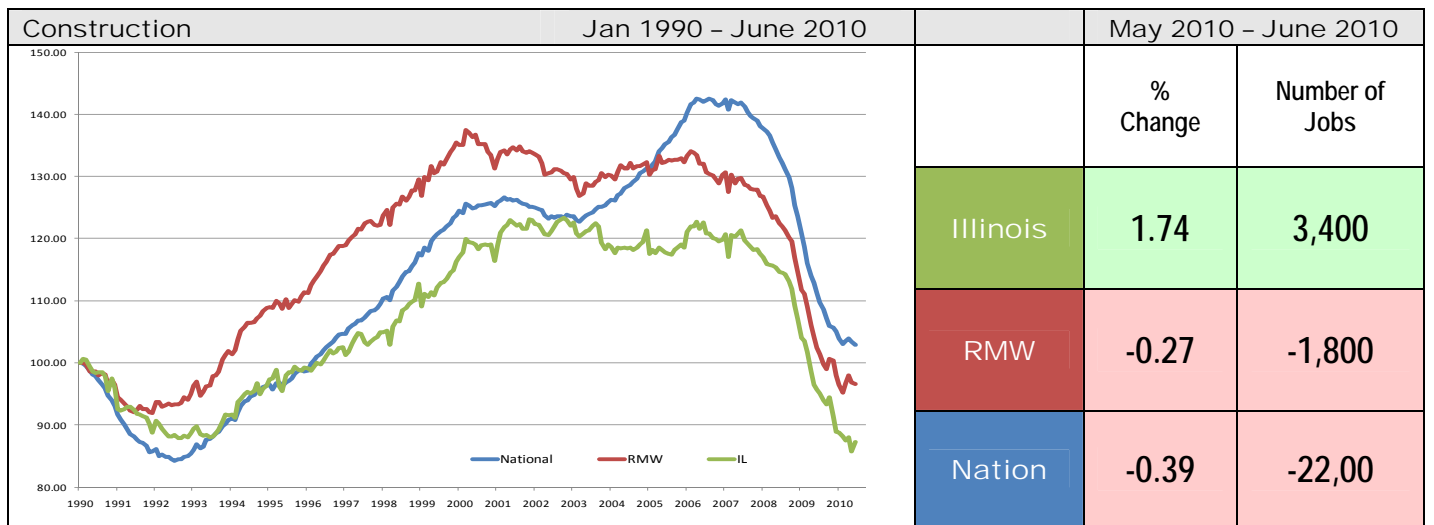


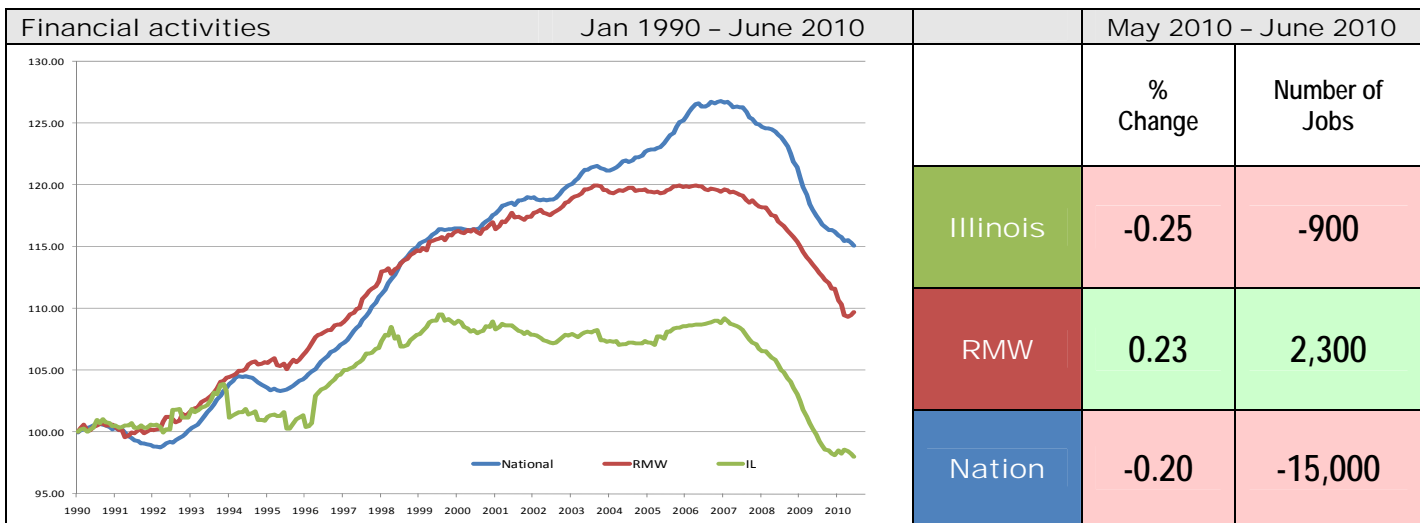
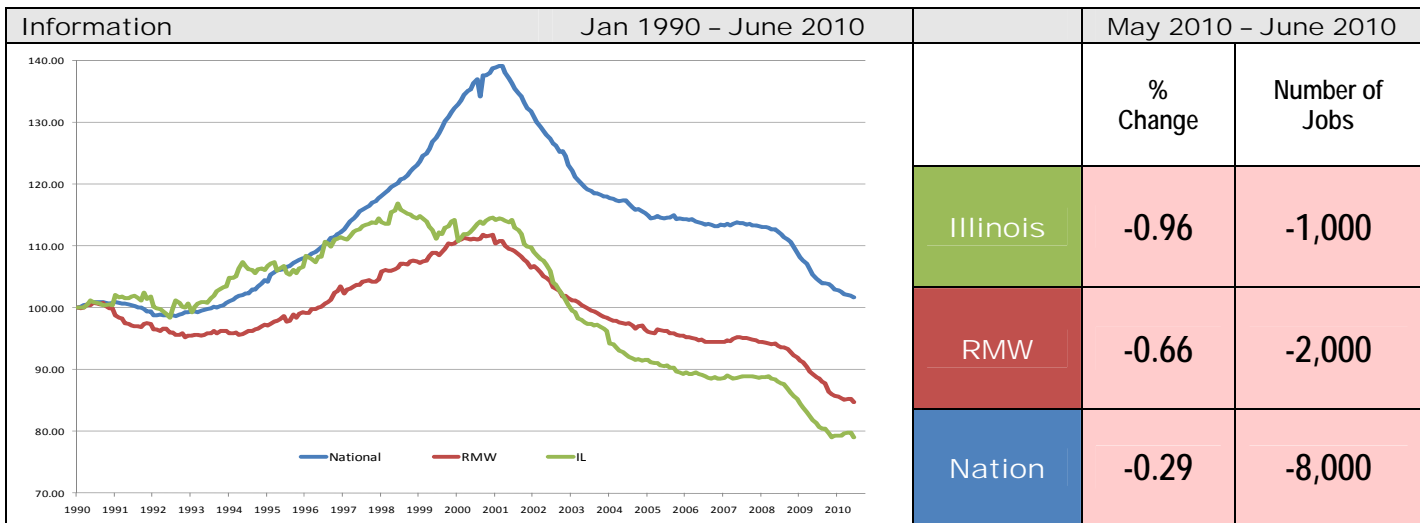
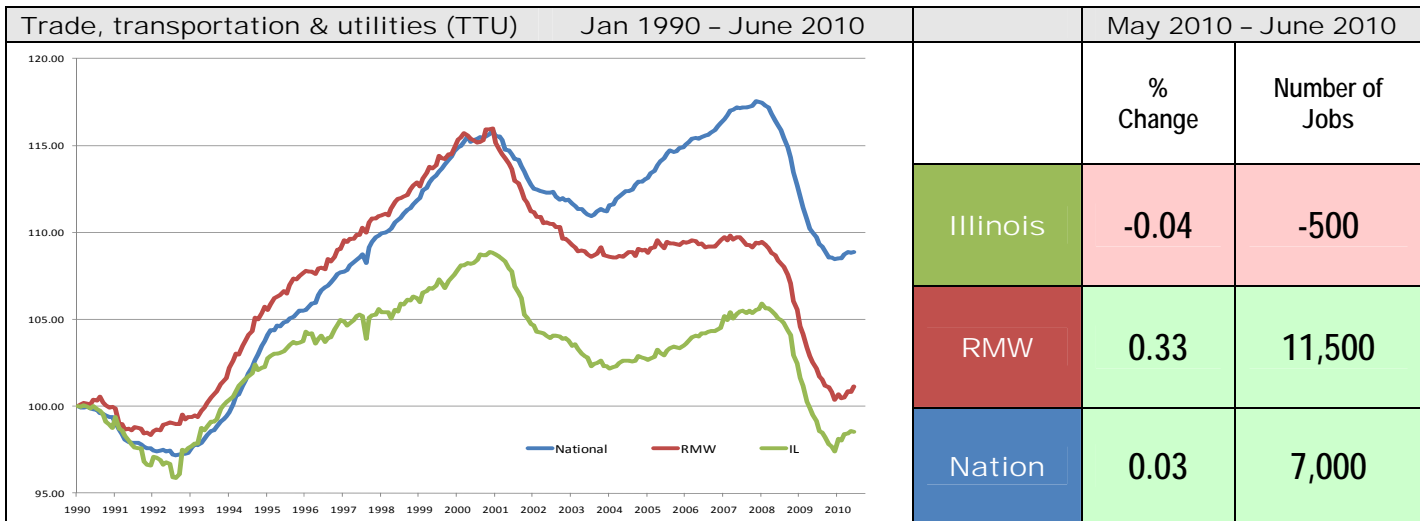
Sector notes

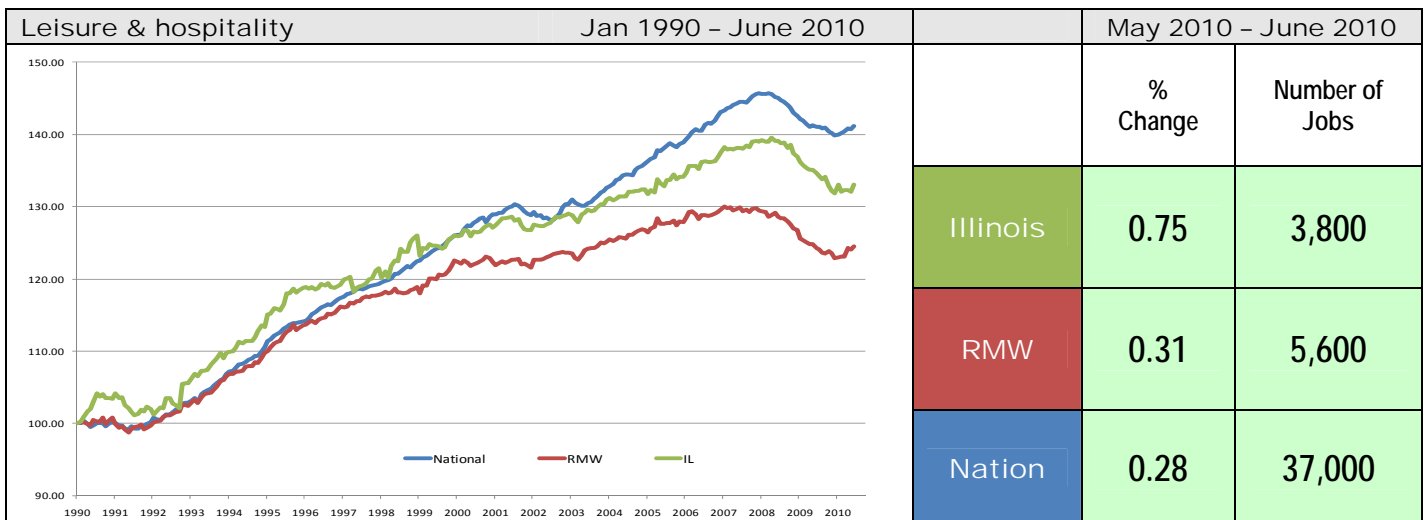
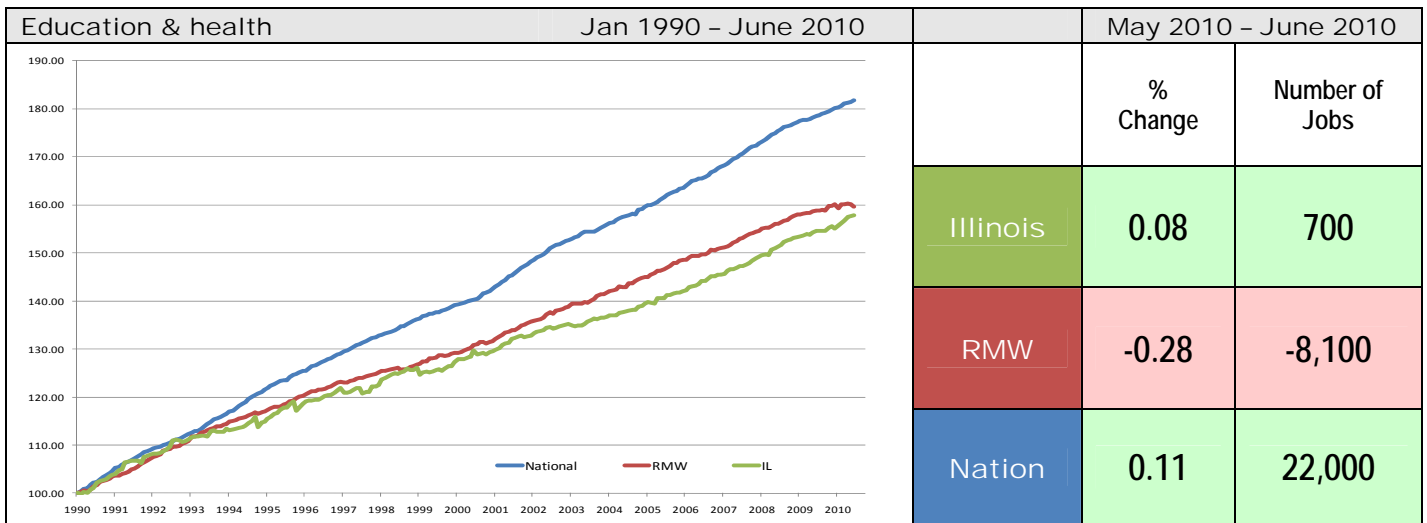
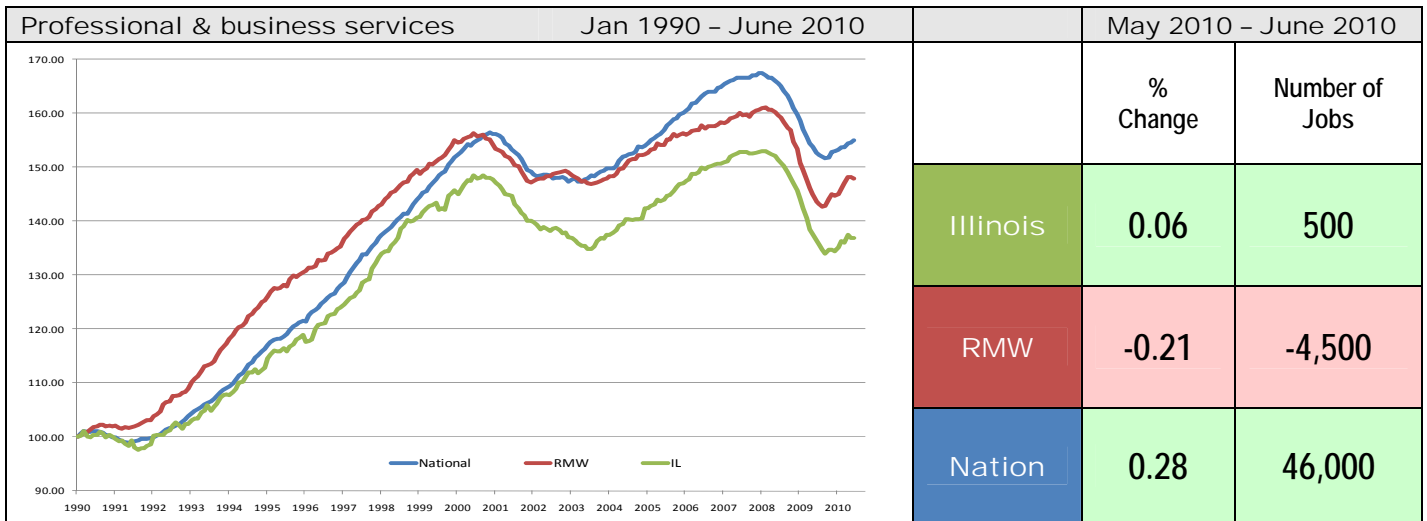
- Illinois posted almost no change in June 2010 by shedding 200 jobs. Six out of ten sectors recorded net gains. Compared to June, Government (1.98% to -1.06%) had major performance loss due to the end of Census jobs. Although the pace of building fell sharply with the end of a tax credit for homebuyers, Construction (-3.25% to 1.74%) in Illinois experienced a major gain in performance. In addition, compared to June, Financial activities (-0.35% to -0.25%), Leisure & hospitality (0.51% to 0.75%) and Other services (0.43% to 0.29%) had relative performance gains, while Information (-0.38% to -0.96%), Manufacturing (0.43% to 0.29%) and Trade transportation & utilities (0.10% to -0.04%) faced relative losses in performance.
- In June at the national level, the top three job-gain sectors were:
 - Professional & business services: 46,000 (0.28%)
 - Leisure & hospitality: 37,000 (0.28%)
 - Education and health: 22,000 (0.11%)
- Major losses at the national level in June were recorded by:
 - Government: -208,000 (-0.91%)
 - Construction: -22,000 (-0.39%)
 - Information: -8,000 (-0.29%)
- For Illinois, the top three job-gain sectors in June were:
 - Construction: 3,400 (1.74%)
 - Leisure & hospitality: 3,800 (0.75%)
 - Other services: 1,300 (0.51%)
- Following are the major sectors that lost jobs in June for Illinois:
 - Government: -9,200 (-1.06%)
 - Information: -1,000 (-0.96%)
- For Illinois, five sectors have employment below 1990 levels. Compared to 1990 employment levels, Manufacturing has -359,500 fewer jobs, Construction is down -28,900 jobs, Information down -27,300 jobs, Trade transportation & utilities down -17,000 jobs, and Financial activities down -7,500 jobs.

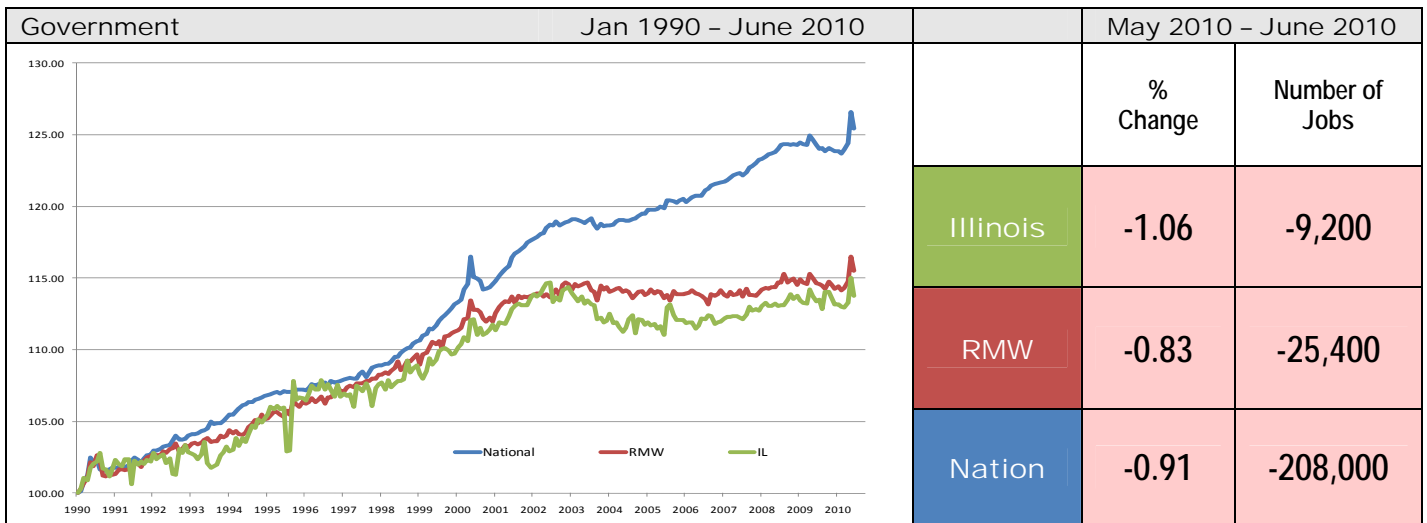
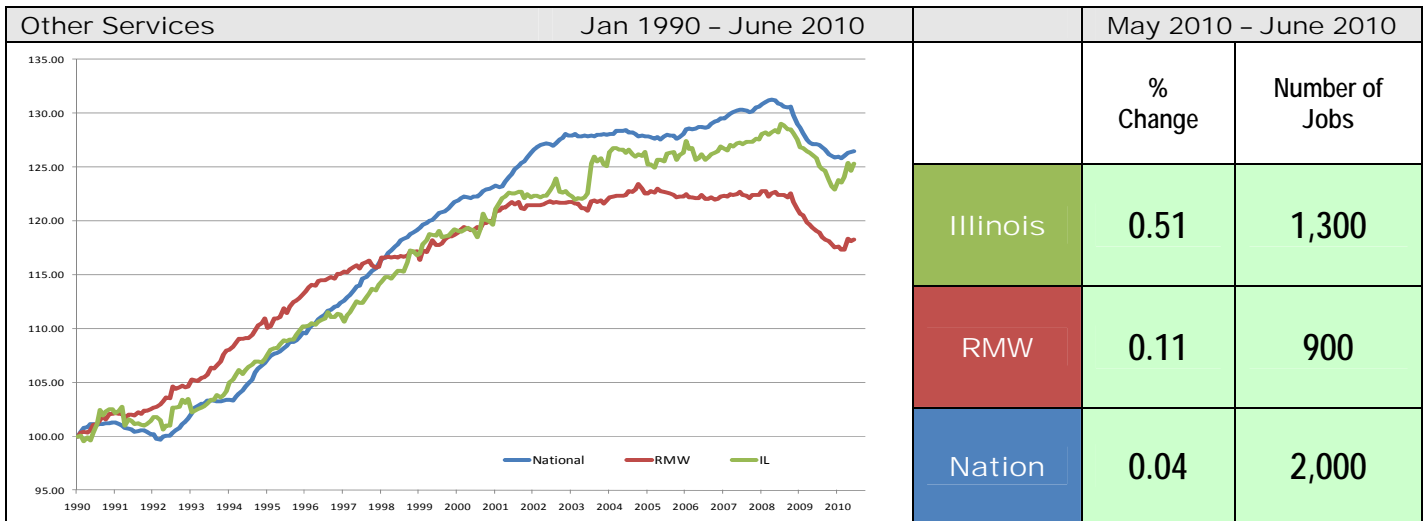
Total Non-farm Employment growth rate by sector Jan 1990 - June 2010

	Illinois				RMW	Nation
	vs. RMW	vs. Nation	Number of Jobs	Rate %	Rate %	Rate %
Construction	-	-	-28,900	-12.71	-3.45	2.95
Manufacturing	-	-	-359,500	-39.01	-32.83	-34.43
Trade, transportation & utilities (TTU)	-	-	-17,000	-1.48	1.16	8.87
Information	-	-	-27,300	-20.90	-15.25	1.69
Financial activities	-	-	-7,500	-2.01	9.69	15.12
Professional & business services	-	-	211,000	36.92	47.86	55.03
Education & health	-	-	306,000	57.84	59.66	81.74
Leisure & hospitality	+	-	127,200	33.11	24.50	41.16
Other Services	+	-	52,000	25.32	18.25	26.46
Government	-	-	104,200	13.80	15.53	25.45









ABOUT: The Regional Economics Applications Laboratory (REAL) is a unit of the Institute of Government and Public Affairs of the University of Illinois. REAL undertakes impact and forecasting analyses of the Illinois and several Midwestern economies and is also engaged in similar analysis in several other countries including Brazil, Chile, Colombia, and Japan. More information can be found at www.real.illinois.edu.