


# Illinois Job Index

Release 6/21/2010	Data Jan 1990 / May 2010	Issue 2010.6	www.real.illinois.edu
----------------------	-----------------------------	-----------------	-----------------------

**For May Illinois Job Index, Illinois, RMW and the nation all gained jobs, but most because of census.**

The monthly Illinois Job Index and MSA Report are issued monthly as tools for elected officials, policy leaders and the public. The objective is to enhance the understanding of the Illinois economy and business climate by comparing and measuring Illinois employment growth rates against those of the Rest of the Midwest (RMW: Indiana, Iowa, Michigan, Missouri, Ohio and Wisconsin) and the Nation. Data and analysis is provided by the Illinois Economic Observatory / Regional Economics Applications Laboratory, University of Illinois.

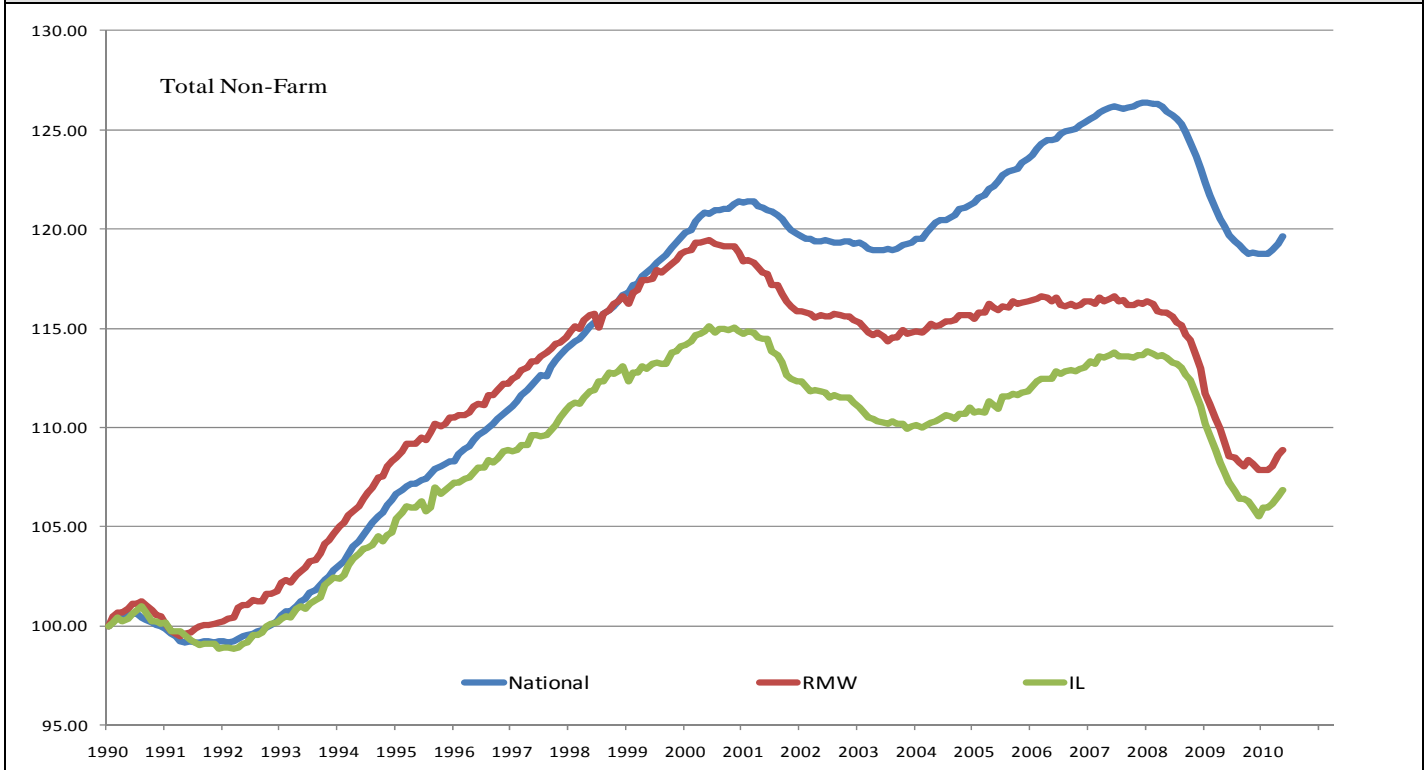
	June 2010 Positive		Apr 2010–May 2010		Last 12 months		May 2010
		Total non-farm employment	Growth Rate %	Number of Jobs	Growth Rate%	Number of Jobs	Shadow U.R. *
		Nation	0.33	431,000	-0.45	-585,000	11.9%
		RMW	0.22	41,300	-0.37	-68,400	13.9%
		Illinois	0.30	16,700	-0.79	-44,600	11.8%

\*REAL has estimated a *shadow unemployment rate*; this is calculated as the unemployment rate that would be observed if labor force participation rates matched the average for the 15-year period from 1990 to 2004.

## Talking Points

Illinois Notes	<ul style="list-style-type: none"> <li>▪ Illinois added 16,700 jobs at a rate of 0.30% in April 2010. So far, the state has had five months positive job growth in a row. The three-month moving average of jobs, a more stable measure of labor market, was up by 15,400 jobs per month.</li> <li>▪ In May 2010, the Nation added 431,000 jobs at a rate of 0.33%, up from a revised 290,000 job gain in April. This is the biggest gain for the nation in four years. The three-month moving average of jobs was up by 309,000 jobs per month.</li> <li>▪ RMW added 41,300 jobs in May after a revised 96,200 job gain in April. The three-month moving average was up by 58,400 jobs per month.</li> <li>▪ Since the beginning of the recession in Dec 2007, Illinois has posted negative job changes 24 times and positive job gains five times. The state of Illinois now has a net loss of 357,800 jobs since the beginning of the recession in December 2007.</li> <li>▪ Five sectors in Illinois have employment levels in this month that are lower than January 1990 – Construction, Manufacturing, Trade, transportation &amp; utilities, Information and Financial activities.</li> <li>▪ Over the last 12 months, Illinois shed 44,600 jobs at a rate -0.79%.</li> <li>▪ The shadow unemployment rates for the Illinois, RMW and the Nation were 11.8%, 13.9% and 11.9%, compared to official unemployment rates of 10.8%, 10.4% and 9.7%.</li> <li>▪ Through May 2010, the cumulative job growth for Illinois, RMW and the Nation compared to January 1990 stood at 6.86%, 8.85%, and 19.62%, respectively.</li> </ul>
Nation Notes	<ul style="list-style-type: none"> <li>▪ The nation added 431,000 jobs in May, smaller than the 500,000 jobs gain that economists expected; only 41,000 were in the private sector, the remainder being temporary 2010 Census jobs</li> <li>▪ Since the last employment peak in December 2007, the nation has lost 7,381,000 jobs. However, for RMW and Illinois, they have not yet recovered from their respective peaks in 2000.</li> <li>▪ The nation has average growth rates for 2007, 2008, 2009 and first 4 month of 2010 were 0.07%, -0.22%, -0.30% and 0.15%, respectively.</li> </ul>

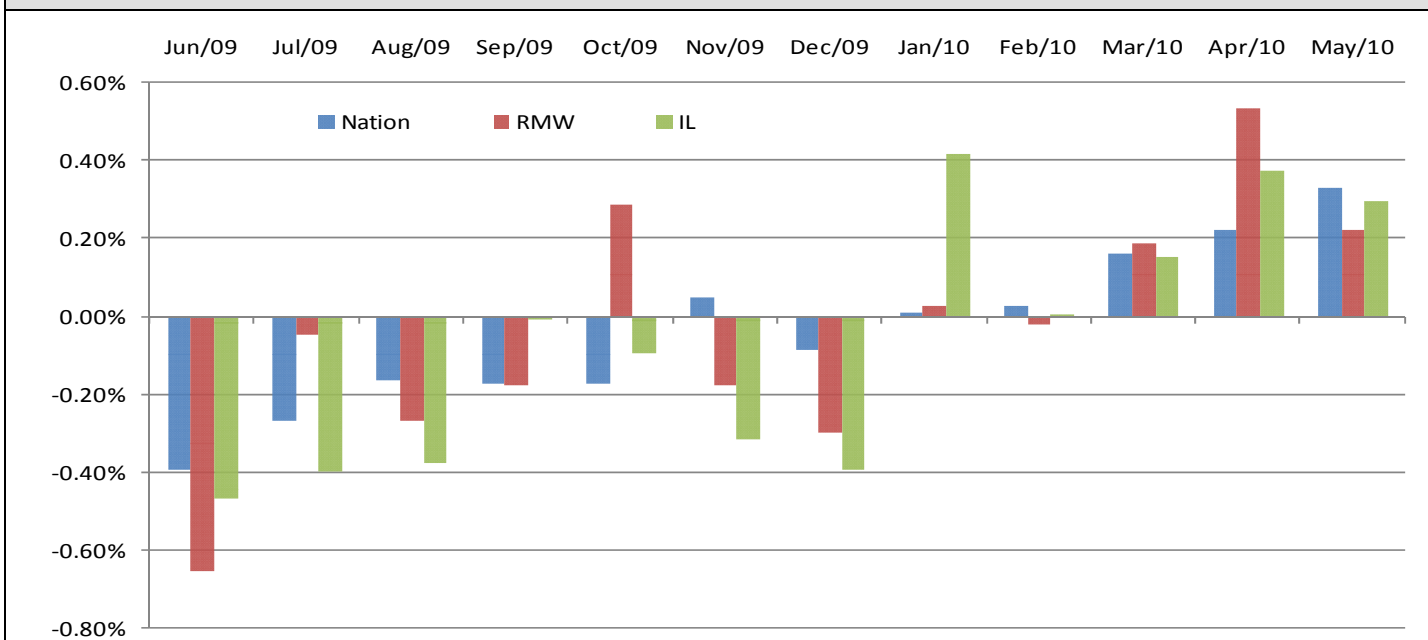
### Total Non-farm Employment growth rate Jan 1990 – May 2010



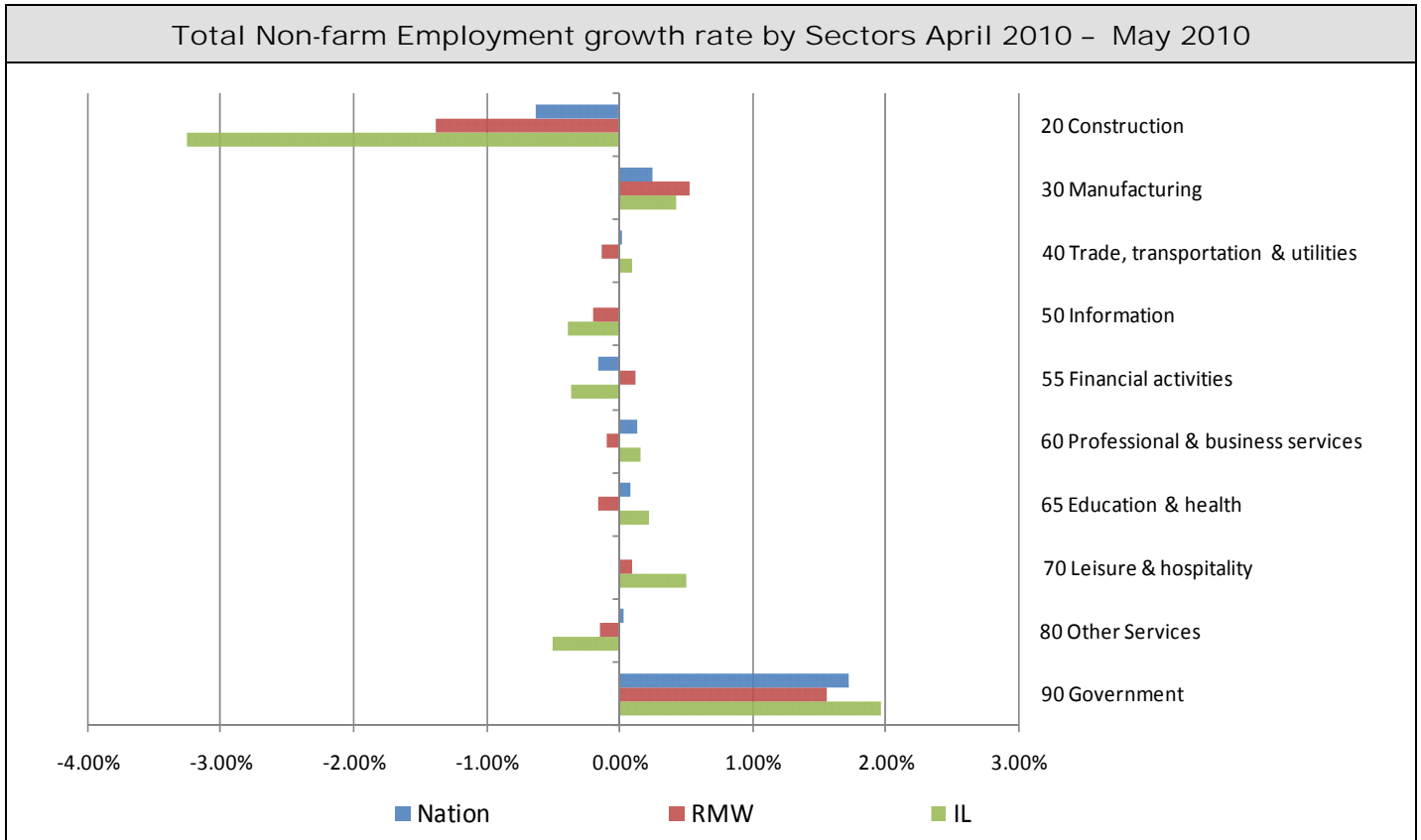
### Total Non-farm Employment and Employment Index

	May 2010 Number of Jobs	Current Index to Jan 1990	Previous Peak Index to Jan 1990	Changes in Jobs since Jan 1990	Changes in Jobs since Pervious Peak
<b>Nation</b>	130,570,000	119.62	126.57 (Dec-2007)	21,419,000	-7,381,000
<b>RMW</b>	18,599,400	108.85	119.44 (Jun-2000)	1,513,000	-1,810,100
<b>Illinois</b>	5,628,200	106.86	115.08 (Nov-2000)	361,400	-431,300

### Last 12 months Total Non-farm Employment Growth Rate June 2009 – May 2010



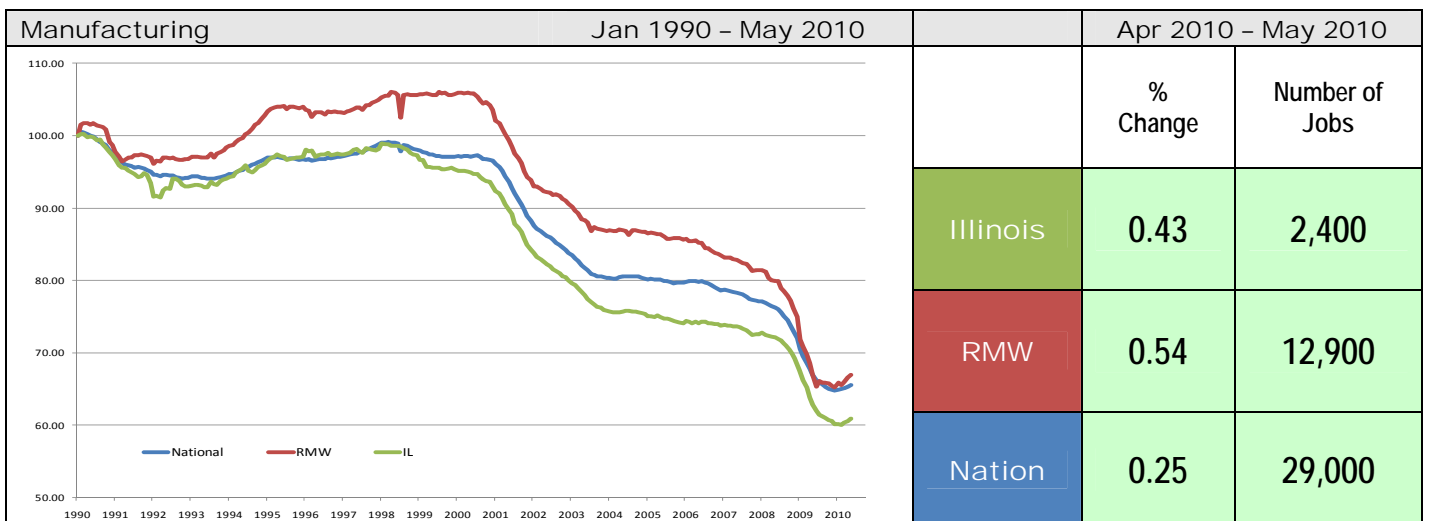
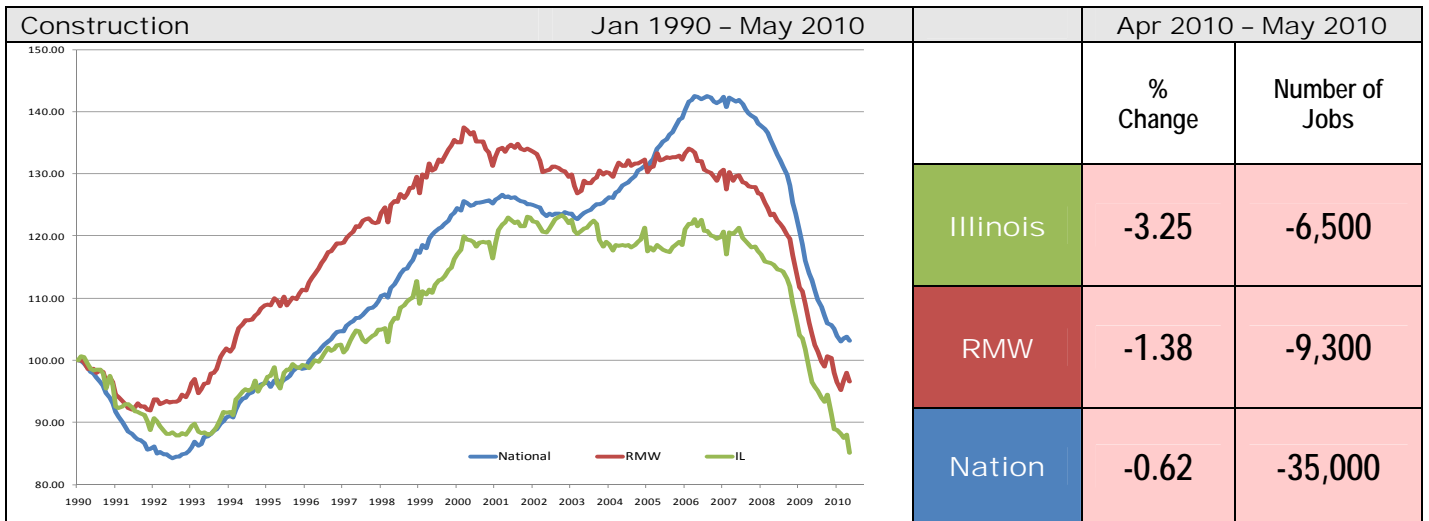
## By employment sector:

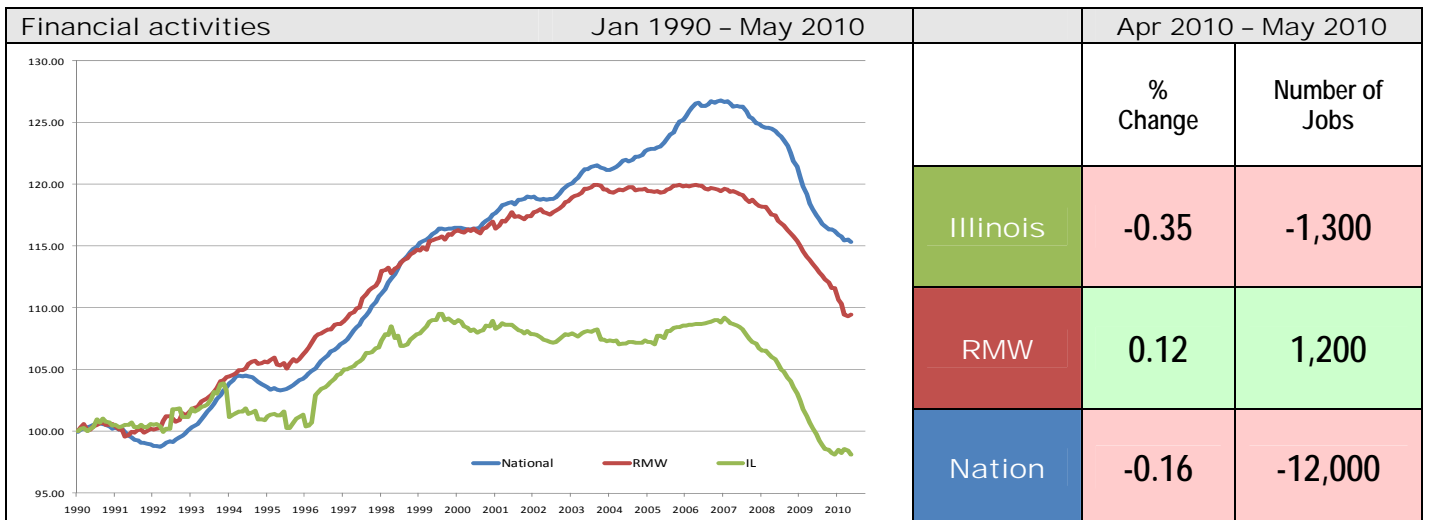
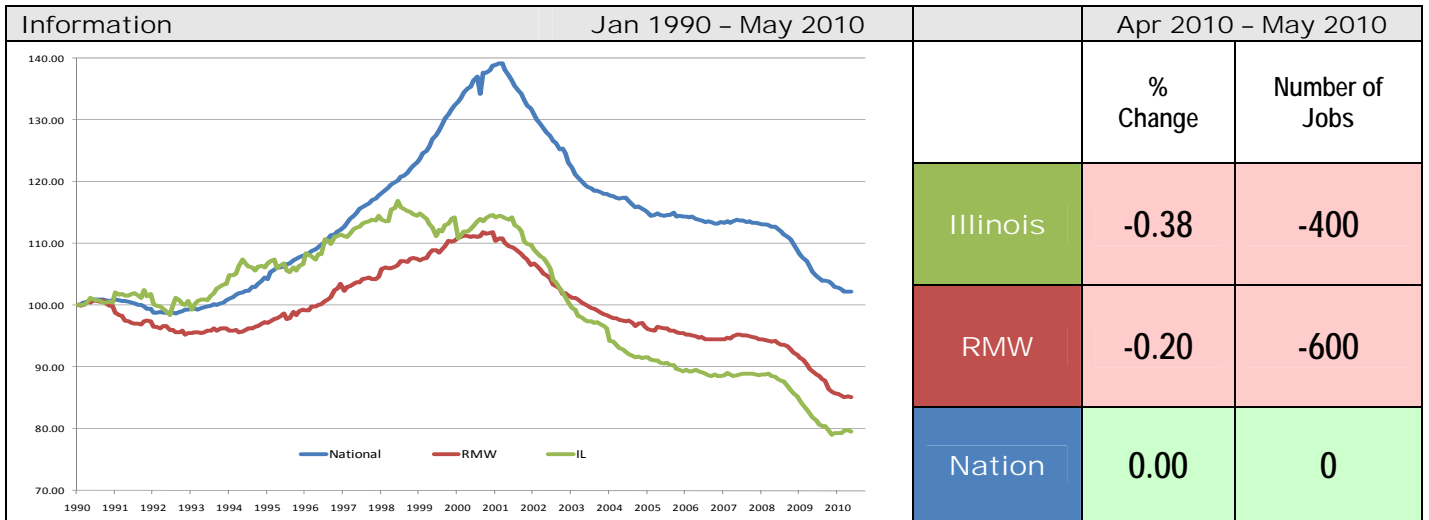
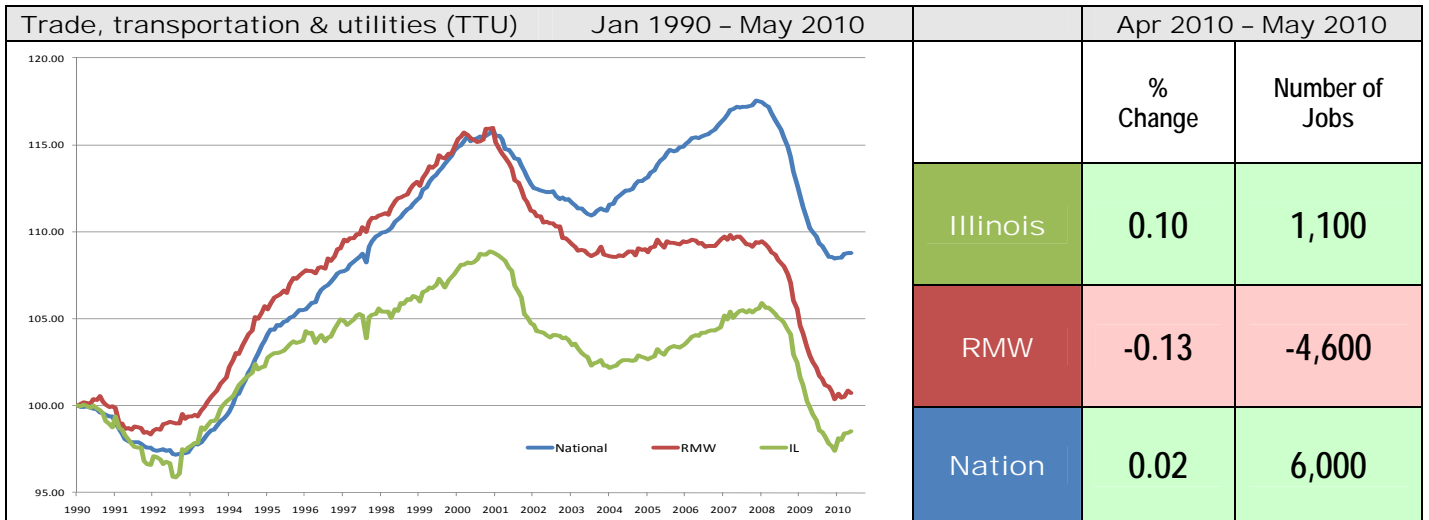


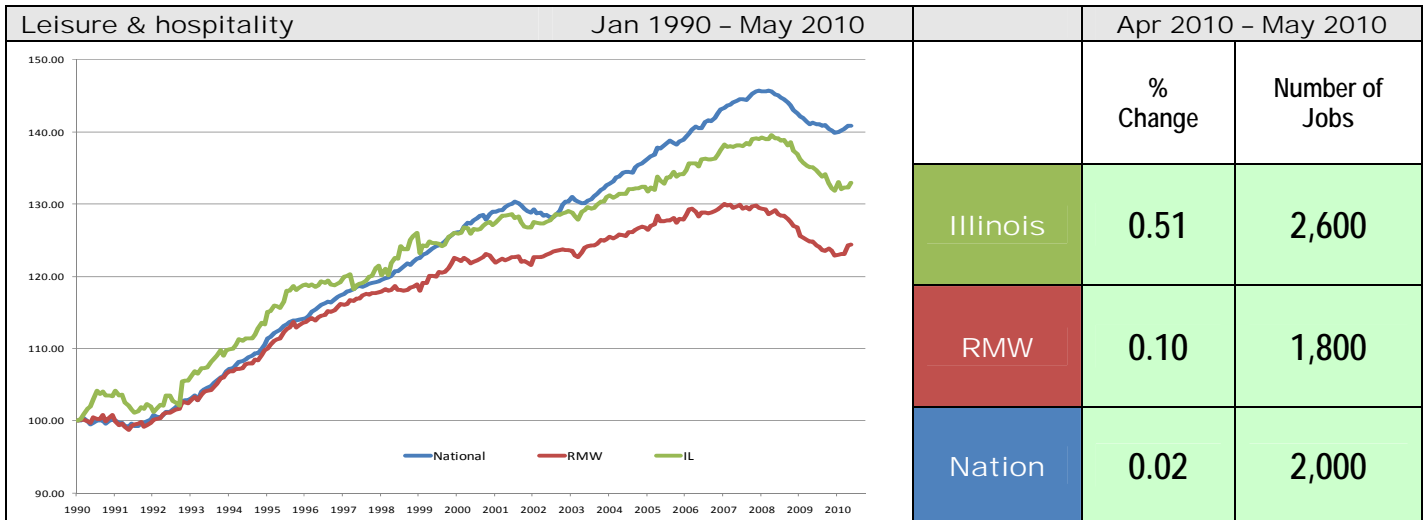
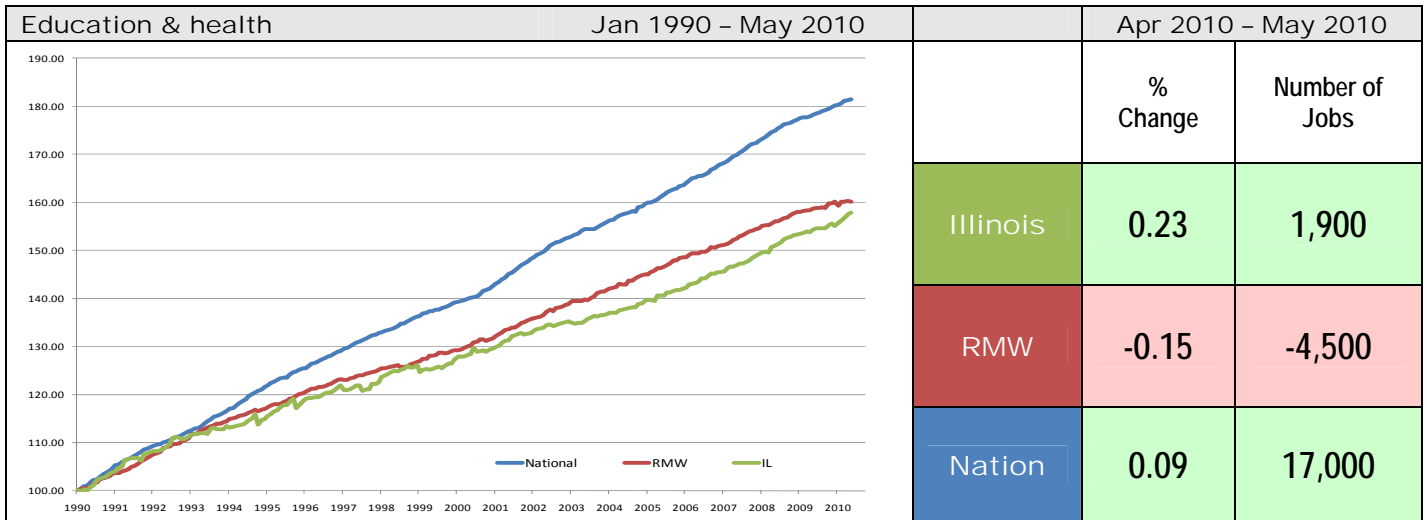
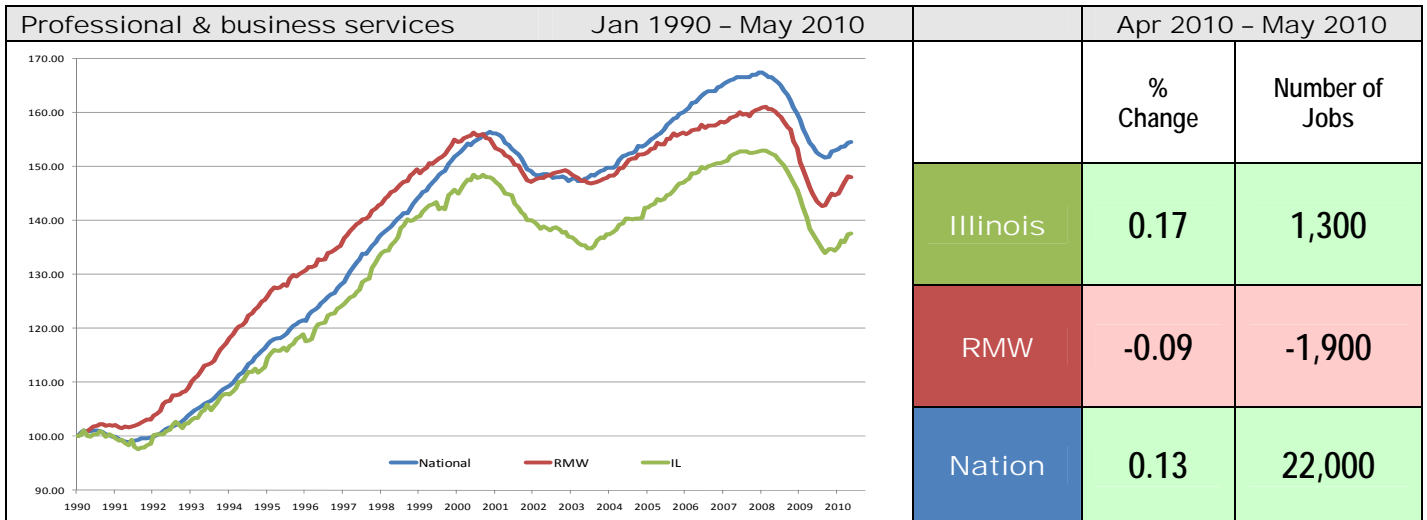
### Sector notes

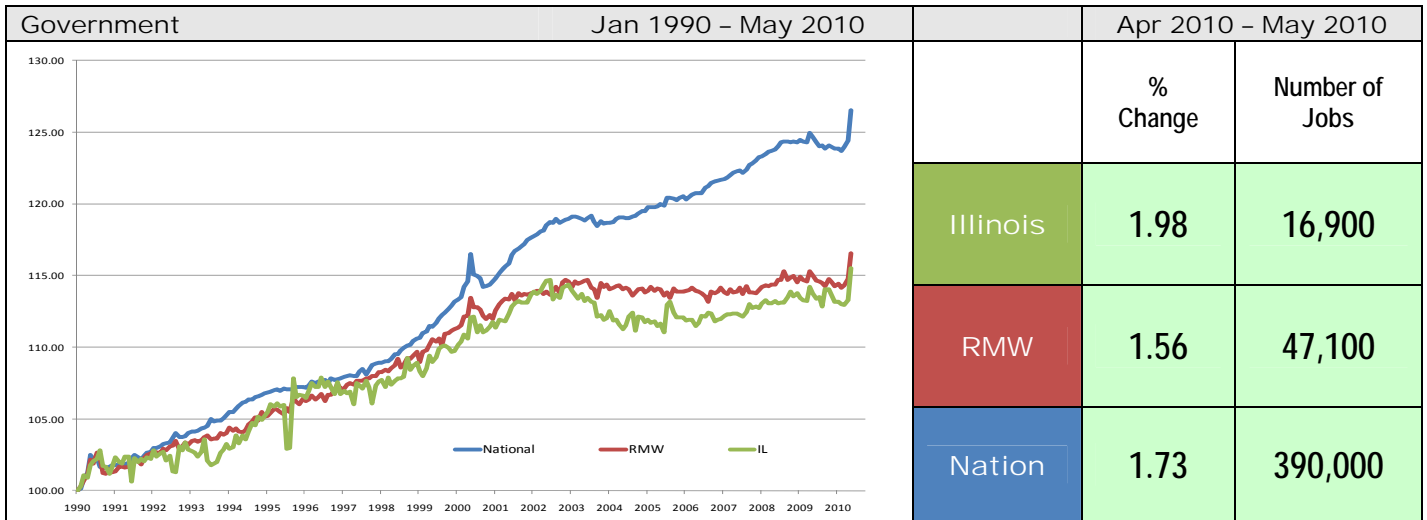
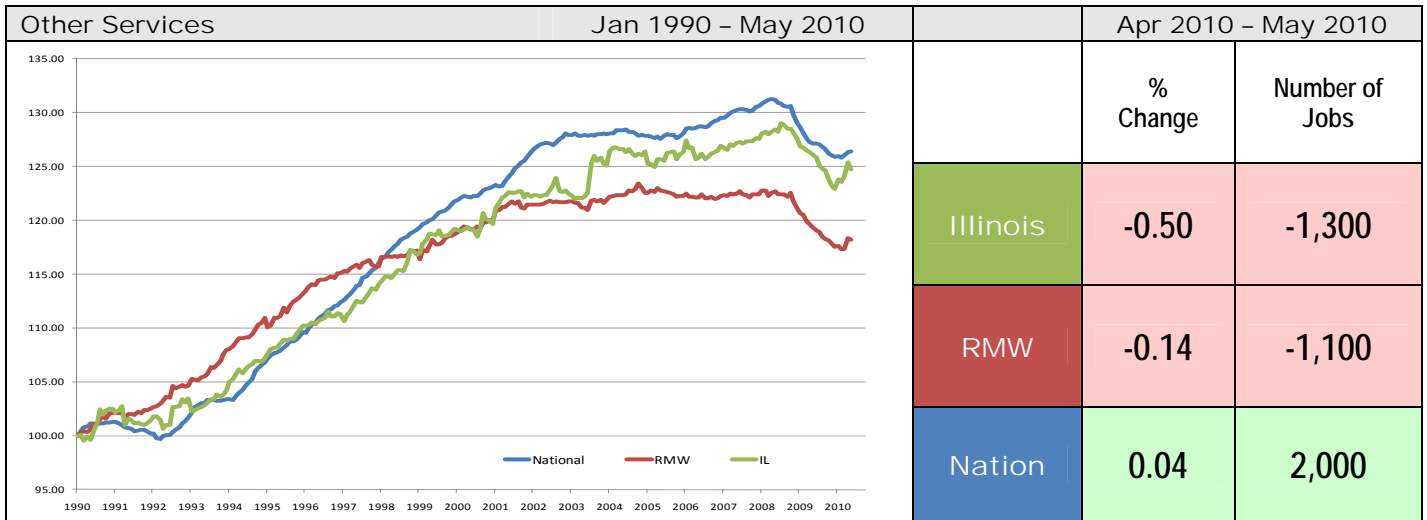
- Illinois posted a positive growth of 0.30% in May 2010 by adding 16,700 jobs. Six out of ten sectors recorded net gains. Compared to May, Government (0.48% to 1.98%) had major performance gain due to the job creation in temporary census hiring, while Construction (0.60% to -3.25%) faced major loss in performance since the first time home buyer tax credit program ended in May, 2010. In addition, compared to May, Information (-0.77% to 0.38%) and Leisure & hospitality (0.22% to 0.51%) had relative performance gains, while Professional & business services (0.50% to 0.17%), Other services (0.84% to -0.50%) and Trade transportation & utilities (0.25% to 0.10%) faced relative losses in performance.
- In May at the national level, the top three job-gain sectors were:
  - Government: 390,000 (1.73%)
  - Manufacturing: 29,000 (0.25%)
  - Professional & business services: 22,000 (0.13%)
- Major losses at the national level in May were recorded by:
  - Construction: -35,000 (-0.62%)
  - Financial activities: -12,000 (-0.16%)
- For Illinois, the top three job-gain sectors in May were:
  - Government: 16,900 (1.98%)
  - Leisure & hospitality: 2,600 (0.51%)
  - Manufacturing: 2,400 (0.43%)
- Following are the major sectors that lost jobs in May for Illinois:
  - Construction: -6,500 (-3.25%)
  - Other services: -1,300 (-0.50%)
- For Illinois, five sectors have employment below 1990 levels. Compared to 1990 employment levels, Manufacturing has -360,700 fewer jobs, Construction is down -33,800 jobs, Information down -26,700 jobs, Trade transportation & utilities down -17,100 jobs, and Financial activities down -7,000 jobs.

Total Non-farm Employment growth rate by sector Jan 1990 - May 2010						
	Illinois				RMW	Nation
	vs. RMW	vs. Nation	Number of Jobs	Rate %	Rate %	Rate %
Construction	-	-	-33,800	-14.86	-3.38	3.12
Manufacturing	-	-	-360,700	-39.14	-33.01	-34.49
Trade, transportation & utilities (TTU)	-	-	-17,100	-1.49	0.75	8.79
Information	-	-	-26,700	-20.44	-14.92	2.17
Financial activities	-	-	-7,000	-1.88	9.47	15.35
Professional & business services	-	-	215,100	37.64	48.01	54.60
Education & health	-	-	306,300	57.90	60.06	81.51
Leisure & hospitality	+	-	126,600	32.95	24.38	40.86
Other Services	+	-	50,800	24.73	18.19	26.37
Government	-	-	117,100	15.51	16.53	26.54









**ABOUT:** The Regional Economics Applications Laboratory (REAL) is a unit of the Institute of Government and Public Affairs of the University of Illinois. REAL undertakes impact and forecasting analyses of the Illinois and several Midwestern economies and is also engaged in similar analysis in several other countries including Brazil, Chile, Colombia, and Japan. More information can be found at [www.real.illinois.edu](http://www.real.illinois.edu).