

Illinois Job Index: MSA Report



Illinois Coalition for Jobs, Growth & Prosperity

Release 11/29/2007	data Jan 1990 / Oct 2007	Issue 10.11	www.jobsillinois.us
------------------------------	------------------------------------	-----------------------	----------------------------

As a companion to the August 2007 Illinois Job Index that reports a **Negative** Rating, this MSA Report provides a localized picture on Illinois job growth and allows for comparisons between local economies, Illinois, Nation and Rest of the Midwest.

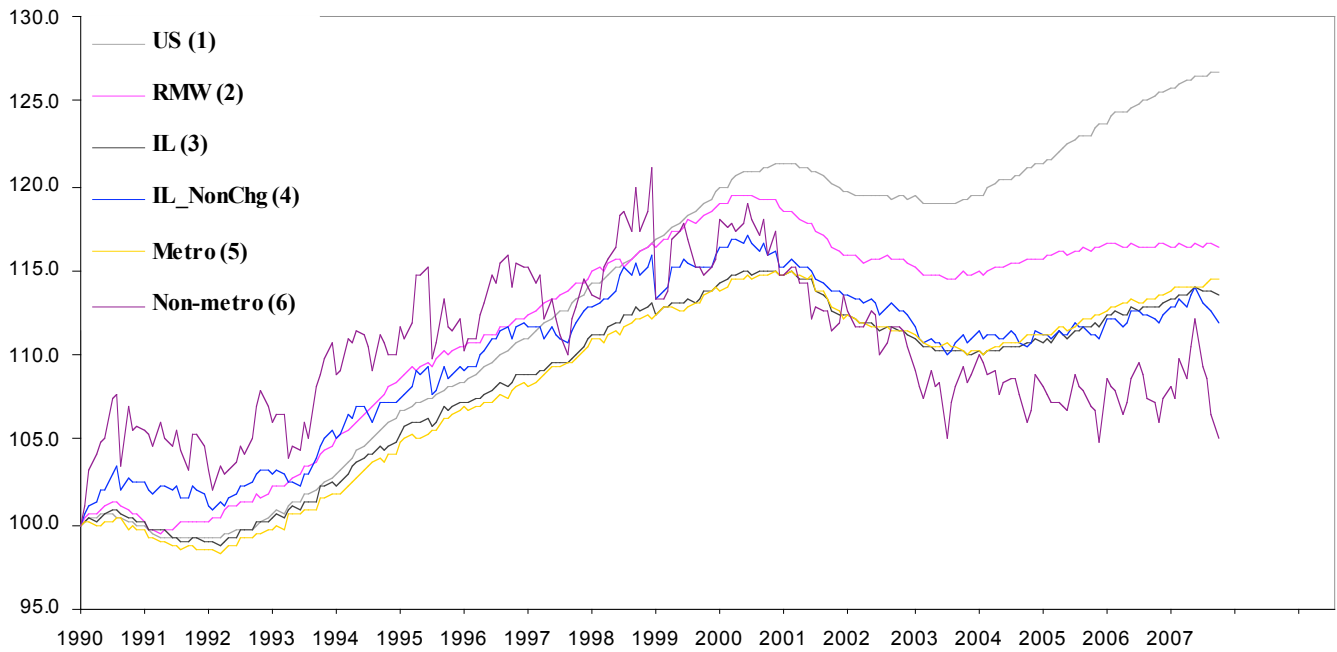
November 2007	Total non-farm employment	Sep 2007 – Oct 2007		Last 12 months	
		Growth Rate (%)	Number of Jobs	Growth Rate (%)	Number of Jobs
	Illinois non-Metro (Rural)	-1.36	-6,900	-1.94	-9,900
	Illinois non-Chicago (Downstate)	-0.65	-11,100	-0.35	-5,900
	Illinois Metro	-0.002	-100	+0.87	+47,300
	Illinois	-0.12	-7,000	+0.63	+37,400
	Rest of Midwest (RMW)	-0.14	-27,500	-0.07	-14,300
	Nation	+0.12	+166,000	+1.23	+1,676,000

The Illinois Coalition for Jobs, Growth & Prosperity publishes the monthly Illinois Job Index and MSA Report as tools for elected officials, policy leaders and the public. We can better understand the Illinois economy and business climate by comparing and measuring Illinois employment growth rates against those of the Rest of the Midwest (RMW: Indiana, Iowa, Michigan, Missouri, Ohio and Wisconsin) and the Nation. Data and analysis is provided by the Illinois Economic Observatory / Regional Economics Applications Laboratory, University of Illinois. The MSA data (unless noted) were seasonally adjusted to be consistent with state totals.

Talking Points

<p>State, Downstate & Metro</p>	<ul style="list-style-type: none"> By losing 7,000 jobs at -0.12% in October, Illinois recorded a negative rating for fourth time in 2007. This is the first time since June 2005 that Illinois has posted a negative rating for two months in a row. Like the overall performance of Illinois, the negative its major parts like Downstate, Metro and Non-metro, all registered negative a rating while Chicago was an exception. However, the metro areas showed a mixed performance in October. Downstate lost 11,100 jobs -0.65% in October compared to a revised net loss of 5,500 jobs at -0.32% in September. This is the largest number of job losses for downstate since July 2003 excepting July 2007 when 12,100 jobs were lost. Chicago added 4,100 jobs at 0.10%, the same growth rate as September. Illinois Metro lost 100 jobs in October compared to 8,600 gains in September. Non-metro by contrast lost 6,900 jobs at -1.36% showing a slight gain in performance compared to a 9,800 job loss in September. Over the last 12-months, however, Illinois registered a 0.63% growth rate by adding 37,400 jobs. Through October, Metro grew by 0.87% by adding 47,300 jobs over the last 12-months whereas Non-metro lost 9,900 jobs at -1.94% in the same period. Chicago, on the other hand added 43,300 jobs at 1.02% as opposed to -5,900 jobs added by Non-Chicago at -0.35%.
<p>MSA page (2-4)</p>	<ul style="list-style-type: none"> Illinois Metro faced a net 0.002% loss in October down from 0.19% gain in September. Among the MSAs, five recorded net gains, four net losses and one stayed unchanged. Chicago added the highest number, 4,100 jobs, at 0.10% followed by Davenport-Rock Island-Moline which added 1,000 jobs at 0.53%. Peoria registered the highest gain in performance with a 0.43% growth in October up from a -0.16% loss in September. Davenport-Rock Island-Moline gained 0.53% up from a zero growth and followed Peoria in performance gain. On the other hand, Champaign-Urbana-Rantoul showed the highest fall in performance with a net -1.41% loss in October down from 3.08% gain in September. Among the MSAs, Rockford lost the highest 2,700 jobs at -1.70% followed by Metro-East which lost 2,100 jobs at -0.86%. Over last 12 months Metro-East grew fastest at 1.34%, by adding 3,200 Jobs. Chicago with a 1.02% growth rate was in the second position in terms of growth rate. Chicago, however, remained the biggest contributor among the MSAs, by adding 43,300 jobs followed by Metro-East. Rockford, Decatur and Champaign-Urbana-Rantoul registered net loss in that period.

Total non-farm Employment growth rate Jan 1990 – Oct 2007



Talking Points

**State,
Downstate &
Metro**

- For Illinois, average monthly growth rate in 2007 until September is 0.05%, which is much lower than the 2006 average of 0.09%.
- The average growth rate for Metro in 2007 through October is the same as the 2006 average of 0.08%. In contrast, resulting from a sustained loss for the last four months, non-metro records a -0.20% average loss in 2007 compared to a 0.21% average growth in 2006.
- Compared to RMW, Illinois continues to do better in terms of yearly aggregated trend both in 2006 and 2007.
- As regards the trend for Downstate, in 2007 a -0.04% average decline was recorded in October compared average 0.11% gain in 2006.

By MSA

Total non-farm employment Seasonally adjusted unless noted*	Sep 2007 –Oct 2007			Last 12 months	
	Change compared to Illinois	Growth Rate %	Number Of Jobs	Growth Rate %	Number of Jobs
Bloomington-Normal (B-N)	+	0.22	200	0.66	600
Champaign-Urbana (C-U-R)	-	-1.41	-1,600	-0.09	-100
Chicago	+	0.10	4,100	1.02	43,300
Davenport-Rock Island-Moline (D-R-M)	+	0.53	1,000	0.80	1,500
Decatur	-	-0.18	-100	-0.36	-200
Kankakee	+	0	0	0.00	0
Peoria	+	0.43	800	0.76	1,400
Rockford	-	-1.70	-2,700	-1.70	-2,700
Springfield	+	0.27	300	0.27	300
Metro-East*	-	-0.86	-2,100	1.34	3,200
Illinois		-0.12	-7,000	0.63	37,400

MSA League Tables*: Non-farm Employment Growth Rate

Monthly growth:

Rank	September 2007	October 2007	Rank	Change**
1	Champaign-Urbana-Rantoul (3.08%)	Davenport-Rock Island-Moline (0.53%)	1	↑ (+7)
2	Kankakee (0.69%)	Peoria (0.43%)	2	↑ (+8)
3	Bloomington-Normal (0.44%)	Springfield (0.27%)	3	↑ (+2)
4	Decatur (0.36%)	Bloomington-Normal (0.22%)	4	↓ (-1)
5	Springfield (0.27%)	Chicago (0.10%)	5	↑ (+1)
6	Chicago (0.10%)	Kankakee (0%)	6	↓ (-4)
7	Metro-East (0.04%)	Decatur (-0.18%)	7	↓ (-3)
8	Davenport-Rock Island-Moline (0%)	Metro-East (-0.86%)	8	↓ (-1)
9	Rockford (-0.06%)	Champaign-Urbana-Rantoul (-1.41%)	9	↓ (-8)
10	Peoria (-0.16%)	Rockford (-1.70%)	10	↓ (-1)

Growth over last 12-months:

Rank	September 2007	October 2007	Rank	Change**
1	Metro-East (1.92%)	Metro-East (1.34%)	1	← (0)
2	Chicago (0.93%)	Chicago (1.02%)	2	← (0)
3	Bloomington-Normal (0.78%)	Davenport-Rock Island-Moline (0.80%)	3	↑ (+1)
4	Davenport-Rock Island-Moline (0.64%)	Peoria (0.76%)	4	↑ (+4)
5	Decatur (0.55%)	Bloomington-Normal (0.66%)	5	↓ (-2)
6	Kankakee (0.46%)	Springfield (0.27%)	6	↑ (+3)
7	Rockford (0.44%)	Kankakee (0%)	7	↓ (-1)
8	Peoria (0.27%)	Champaign-Urbana-Rantoul (-0.09%)	8	↑ (+2)
9	Springfield (0.09%)	Decatur (-0.36%)	9	↓ (-4)
10	Champaign-Urbana-Rantoul (-0.26%)	Rockford (-1.70%)	10	↓ (-3)

Talking Points

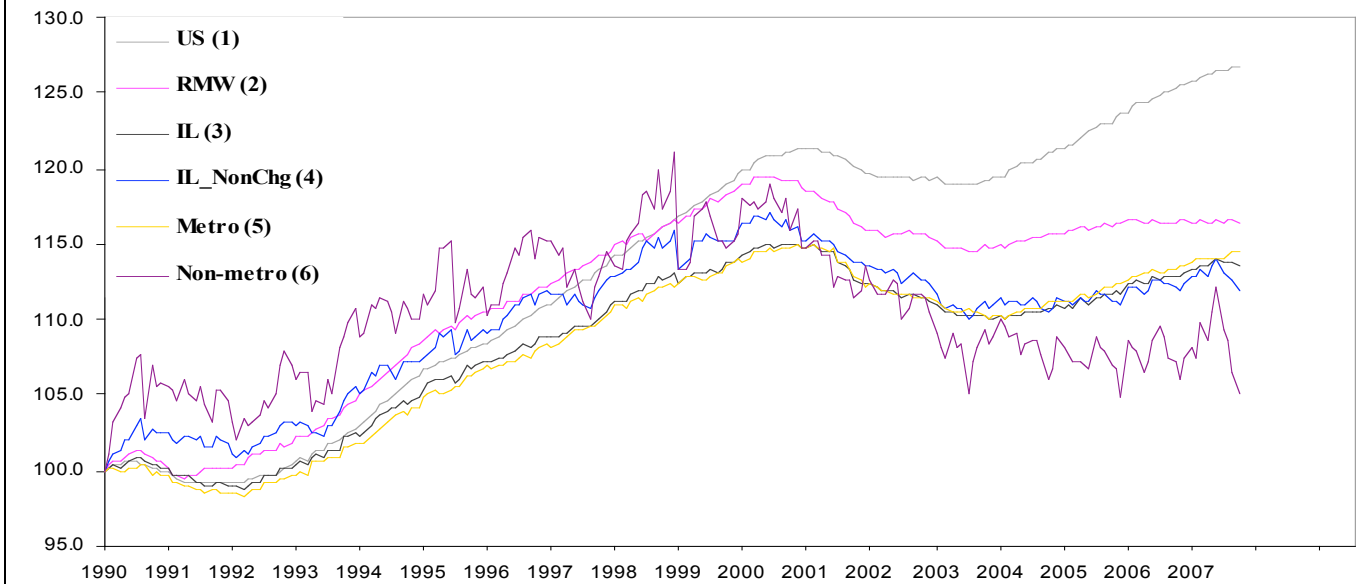
MSA League Tables

- The most notable upward move in October is that of Peoria from 10th to 2nd position.
- Davenport-Rock Island-Moline grabbed the first position in October up from 8th position in September.
- Springfield and Chicago improved from 5th and 6th position to 3rd and 5th position respectively.
- The deepest fall in October was registered by Champaign-Urbana-Rantoul which slipped down to 9th position from 1st position in September.
- Among others Bloomington-Normal, Kankakee, Decatur, Metro-East and Peoria lost ground in October.
- In the league table for the last 12 months growth, Metro-East and Chicago, the two best performers in September retained their position.
- Four MSAs had lost grounds in October. Among them, Decatur faced the most abrupt drop from 5th to the 9th position. Bloomington-Normal, Kankakee and Rockford slipped from 3rd, 6th and 7th position to 5th, 7th and 10th position respectively.
- Four MSAs had a lift in their position. Peoria jumped up by 4 ranks from 8th to 4th position. Springfield (9th to 6th), Champaign-Urbana (10th to 8th) and Davenport-Rock Island Moline (4th to 3rd) all gained.

*MSA League Tables are based on revised employment data. For instances of equal growth rate for multiple MSAs ranks are decided based on change of growth rate from previous month.

**Changes indicate change in rank position compared to previous month. Rise is indicated by a '↑', decline by a '↓' and for an unchanged position a '←' is used. Figures in parenthesis indicate relative rank change from previous month.

Total non-farm Employment growth rate Jan 1990 – Oct 2007



Shaded area on above chart represents Illinois growth.

MSA DESCRIPTION: **Bloomington-Normal (B-N):** McLean Co. **Champaign-Urbana (C-U-R):** Champaign Co., Ford Co. & Piatt Co. **Chicago:** Cook Co. IL, DeKalb Co. IL, DuPage Co. IL, Grundy Co. IL, Kane Co. IL, Kendall Co. IL, Lake Co. IL, McHenry Co. IL, Will Co. IL & Kenosha Co. WI **Davenport-Moline-Rock Island (D-R-M):** Henry Co. IL, Mercer Co. IL, Rock Island Co. IL & Scott Co. IA **Decatur:** Macon Co. **Kankakee:** Kankakee Co. **Metro-East:** Bond Co., Calhoun Co., Clinton Co., Jersey Co., Macoupin Co., Madison Co., Monroe Co. & St. Clair Co. **Peoria-Pekin (Peoria):** Marshall Co., Peoria Co., Stark Co., Tazewell Co. & Woodford Co. **Rockford:** Boone Co. & Winnebago Co. **Springfield:** Menard Co. & Sangamon Co.

The MSA data (unless noted) were seasonally adjusted to be consistent with state totals.

ABOUT: The Illinois Coalition for Jobs, Growth & Prosperity is a not-for-profit 501-c-4 organization. Coalition founding members include the Chicagoland Chamber of Commerce, the Illinois Business Roundtable, the Illinois Civil Justice League, the Illinois Manufacturers' Association, and the Illinois State Chamber of Commerce. Established to provide Illinois voters with information about government-related issues that have a direct effect on jobs, the Coalition represents firms employing more than a million Illinois workers.