

# Illinois Job Index: MSA Report



## Illinois Coalition for Jobs, Growth & Prosperity

Release  
**10/3/2008**

data  
**Jan 1990 / Aug 2008**

Issue  
**11.9**

[www.real.uiuc.edu](http://www.real.uiuc.edu)

As a companion to the September 2008 Illinois Job Index that reports a **negative** Rating, this MSA Report provides a localized picture on Illinois job growth and allows for comparisons between local economies, Illinois, the Nation and the Rest of the Midwest.

September 2008	Total non-farm employment	July 2008 – Aug 2008		Last 12 months	
		Growth Rate (%)	Number of Jobs	Growth Rate (%)	Number of Jobs
	Illinois Metro	-0.06	-3,100	-0.13	-7,100
	Illinois non-Metro (Rural)	-0.08	-400	0.21	1,100
	Illinois non-Chicago (Downstate)	-0.04	-600	-0.18	-3,100
	Illinois	-0.06	-3,500	-0.10	-6,000
	Rest of Midwest (RMW)	-0.05	-10,600	-0.70	-139,600
	Nation	-0.06	-84,000	-0.21	-283,000

The Illinois Coalition for Jobs, Growth & Prosperity publishes the monthly Illinois Job Index and MSA Report as tools for elected officials, policy leaders and the public. We can better understand the Illinois economy and business climate by comparing and measuring Illinois employment growth rates against those of the Rest of the Midwest (RMW: Indiana, Iowa, Michigan, Missouri, Ohio and Wisconsin) and the Nation. Data and analysis is provided by the Illinois Economic Observatory / Regional Economics Applications Laboratory, University of Illinois. The MSA data (unless noted) were seasonally adjusted to be consistent with state totals.

## Talking Points

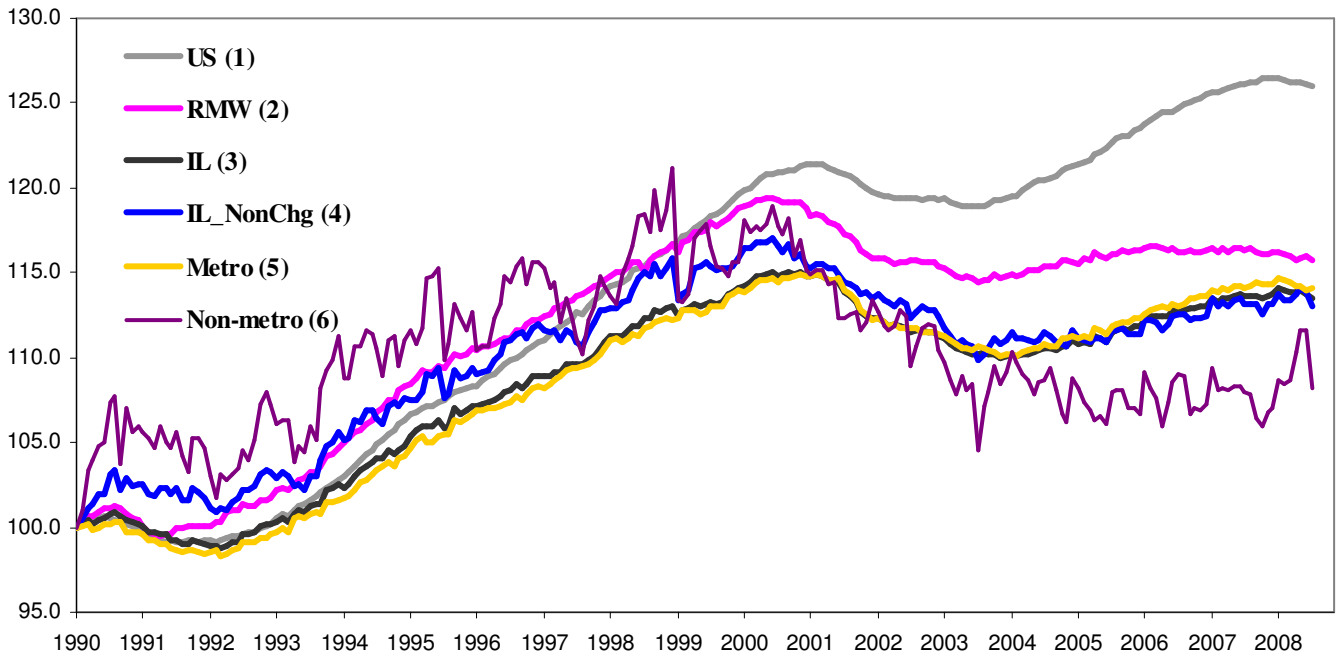
### State, Downstate & Metro

- Illinois lost 3,500 jobs at a rate of -0.06% in August, compared to a revised loss of 9,700 jobs in July. This is the fifth time in 2008 that Illinois posted negative growth.
- Illinois has lost 10,400 jobs since January, 2008.
- Illinois posted negative overall growth in August, at the same time, the major geographic divisions, Metro-Non-metro or Chicago-Downstate all posted negative ratings. Metro areas showed variation in performance.
- Illinois Non-metro lost 400 jobs at -0.08% in August, compared to a revised loss of 16,200 jobs in July. In contrast, Metro posted a -0.06% growth in August by losing 3,100 jobs, compared to a revised 6,500 job gain in July
- Chicago lost 2,900 jobs this month and has lost 7,800 jobs since this January; in addition, Downstate, lost 600 jobs in August and has lost 2,600 jobs since the beginning of 2008.
- Over the last 12-month period, Illinois registered a -0.10% growth by losing 6,000 jobs.
- In terms of the 12-month aggregated account, Metro posted a negative -0.13% growth by losing 7,100 jobs whereas Non-Metro added 1,100 jobs at 0.21%. Chicago lost 2,900 jobs at -0.07% whereas Downstate lost 3,100 jobs at -0.18%.

### MSA page (2-4)

- Illinois Metro posted a negative growth rate of -0.06% by losing 3,100 jobs in August. Within the MSAs, three areas posted positive growth, four posted negative growth, and three remained the same.
- In terms of growth performance, four MSAs posted a net improvement from July to August, five declined, and one remained the same. The biggest gains in August as compared to July were for Metro-East (0.00% to 0.21%), Peoria (0.11% to 0.21%), and Davenport-Rock Island-Moline (0.00% to 0.11%).
- Three among the ten MSAs posted net gains in August. The most significant gains were by Metro-East with 500 jobs at 0.21% growth and Peoria with 400 jobs at 0.21% growth.
- Over the last 12-month period, Kankakee grew the fastest at 2.51% by adding 1,100 jobs, followed by Peoria at 0.85% by adding 1,600 jobs. Over the five MSAs that posted negative growth rates, Metro-East had the biggest loss of 6,300 jobs at -2.59%.

### Total non-farm Employment growth Jan 1990 – Aug 2008



### Talking Points

#### State, Downstate & Metro

- While Illinois' average growth was 0.09% in 2006 and 0.05% in 2007, the average for 2008 to date is -0.02%.
- Over the last 12-month period, the average growth rate for Metro was -0.01% and for Non-metro it was 0.03%.
- Different from the aggregate trend since January 1990, Illinois did better than the RMW in terms of yearly aggregated trend both in 2006 and 2007. The 2008 average through August is also in favor of Illinois.
- Downstate registered a -0.02% average growth rate in 2008 compared to an average of 0.08% gain in 2006 and 0.05% growth in 2007.

### By MSA

Total non-farm employment Seasonally adjusted unless noted*	Jul 2008 –Aug 2008			Last 12 months	
	Change compared to Illinois	Growth Rate %	Number Of Jobs	Growth Rate %	Number of Jobs
Bloomington-Normal (B-N)	+	0.00	0	0.66	600
Champaign-Urbana (C-U-R)	-	-0.63	-700	-0.45	-500
Chicago	-	-0.07	-2,900	-0.07	-2,900
Davenport-Rock Island-Moline (D-R-M)	+	0.11	200	-0.05	-100
Decatur	-	-0.18	-100	0.00	0
Kankakee	+	0.00	0	2.51	1,100
Peoria	+	0.21	400	0.85	1,600
Rockford	+	0.00	0	0.00	0
Springfield	-	-0.45	-500	-0.54	-600
Metro-East*	+	0.21	500	-2.59	-6,300
<b>Illinois</b>		<b>-0.06</b>	<b>-3,500</b>	<b>-0.10</b>	<b>-6,000</b>

# MSA League Tables\*: Non-farm Employment Growth Rate

## Monthly growth:

Rank	July 2008	August 2008	Rank	Change**
1	Champaign-Urbana-Rantoul (1.55%)	Metro-East (0.21%)	1	↑(+9)
2	Kankakee (0.67%)	Peoria (0.21%)	2	↑(+4)
3	Rockford (0.37%)	Davenport-Rock Island-Moline (0.11%)	3	↑(+6)
4	Bloomington-Normal (0.33%)	Bloomington-Normal (0%)	4	↔(0)
5	Decatur (0.18%)	Kankakee (0%)	5	↓(-3)
6	Peoria (0.11%)	Rockford (0%)	6	↓(-3)
7	Springfield (0.09%)	Chicago (-0.07%)	7	↑(+1)
8	Chicago (0.07%)	Decatur (-0.18%)	8	↓(-3)
9	Davenport-Rock Island-Moline (0%)	Springfield (-0.45%)	9	↓(-2)
10	Metro-East (0%)	Champaign-Urbana-Rantoul (-0.63%)	10	↓(-9)

## Growth over last 12 months:

Rank	July 2008	August 2008	Rank	Change**
1	Kankakee (2.75%)	Kankakee (2.51%)	1	↔(0)
2	Peoria (0.96%)	Peoria (0.85%)	2	↔(0)
3	Bloomington-Normal (0.66%)	Bloomington-Normal (0.66%)	3	↔(0)
4	Decatur (0.54%)	Decatur (0%)	4	↔(0)
5	Davenport-Rock Island-Moline (0.21%)	Rockford (0%)	5	↑(+2)
6	Springfield (0.18%)	Davenport-Rock Island-Moline (-0.05%)	6	↓(-1)
7	Rockford (0.06%)	Chicago (-0.07%)	7	↑(+1)
8	Chicago (0.04%)	Champaign-Urbana-Rantoul (-0.45%)	8	↑(+1)
9	Champaign-Urbana-Rantoul (-0.54%)	Springfield (-0.54%)	9	↓(-3)
10	Metro-East (-2.8%)	Metro-East (-2.59%)	10	↔(0)

## Talking Points

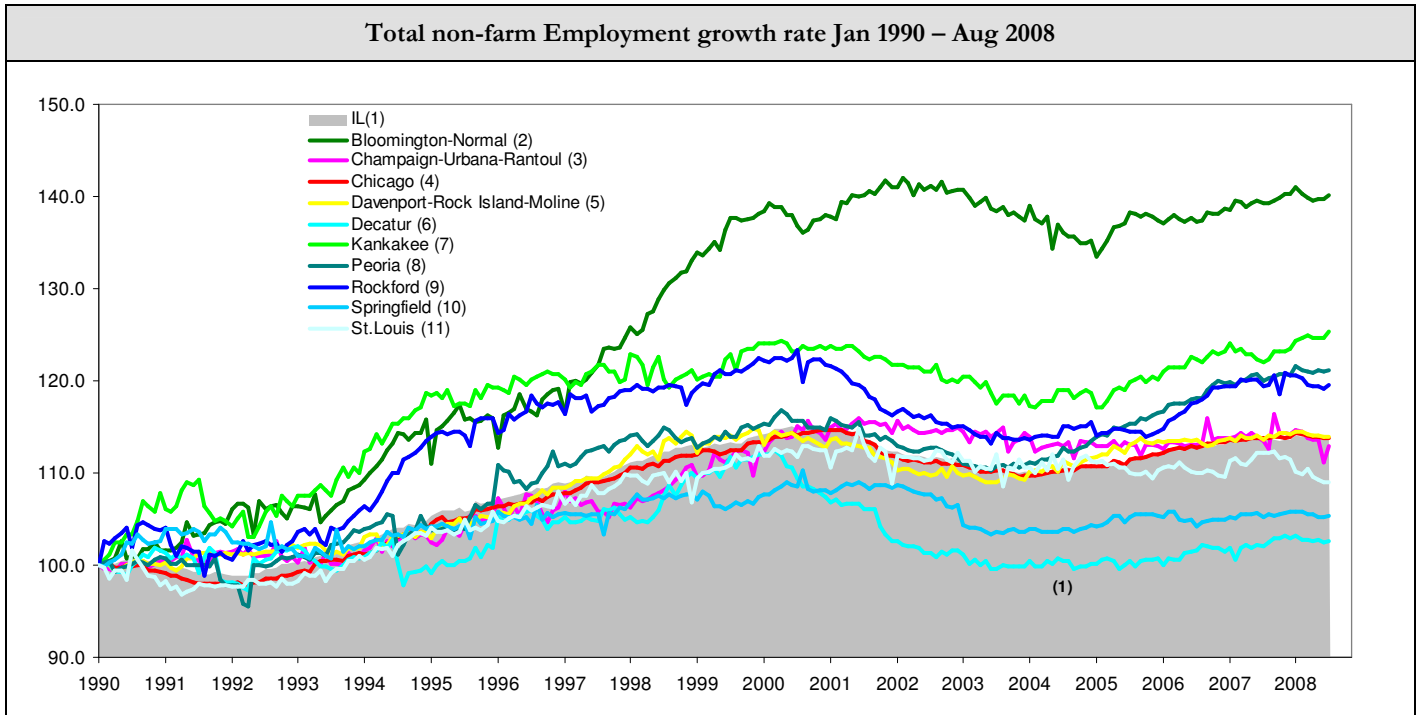
### MSA League Tables

- The most remarkable upward move in August is by Metro-East (10<sup>th</sup> to 1<sup>st</sup>) which moved up by 9 spots.
- Davenport-Rock Island-Moline (9<sup>th</sup> to 3<sup>rd</sup>) and Peoria (6<sup>th</sup> to 2<sup>nd</sup>) made significant gains in terms of the rank from July.
- Champaign-Urbana-Rantoul experienced the deepest fall (1<sup>st</sup> to 10<sup>th</sup>) in August.
- Kankakee, Rockford, Decatur, and Springfield all lost ground in August.
- In the 12 months growth league table, upward moves were recorded for Rockford (7<sup>th</sup> to 5<sup>th</sup>), Chicago (8<sup>th</sup> to 7<sup>th</sup>), and Champaign-Urbana-Rantoul (9<sup>th</sup> to 8<sup>th</sup>).
- Kankakee, Peoria Bloomington-Normal, and Decatur are still in the top 4 whereas Metro-East is still in the last position.
- Springfield experienced the greatest fall (6<sup>th</sup> to 9<sup>th</sup>) in August, followed by Davenport-Rock Island-Moline (5<sup>th</sup> to 6<sup>th</sup>).

\*MSA League Tables are based on revised employment data. For instances of equal growth rate for multiple MSAs ranks are decided based on change of growth rate from previous month.

\*\*Changes indicate change in rank position compared to previous month and correspond to the MSA at the right column. Rise is indicated by a '↑' and decline by a '↓' and for an unchanged position a '↔' is used. Figures in parenthesis indicate relative rank change from previous month.

### Total non-farm Employment growth rate Jan 1990 – Aug 2008



Shaded area on above chart represents Illinois growth.

MSA DESCRIPTION: **Bloomington-Normal (B-N):** McLean Co. **Champaign-Urbana (C-U-R):** Champaign Co., Ford Co. & Piatt Co. **Chicago:** Cook Co. IL, DeKalb Co. IL, DuPage Co. IL, Grundy Co. IL, Kane Co. IL, Kendall Co. IL, Lake Co. IL, McHenry Co. IL, Will Co. IL & Kenosha Co. WI **Davenport-Moline-Rock Island (D-R-M):** Henry Co. IL, Mercer Co. IL, Rock Island Co. IL & Scott Co. IA **Decatur:** Macon Co. **Kankakee:** Kankakee Co. **Metro-East:** Bond Co., Calhoun Co., Clinton Co., Jersey Co., Macoupin Co., Madison Co., Monroe Co. & St. Clair Co. **Peoria-Pekin (Peoria):** Marshall Co., Peoria Co., Stark Co., Tazewell Co. & Woodford Co. **Rockford:** Boone Co. & Winnebago Co. **Springfield:** Menard Co. & Sangamon Co.

The MSA data (unless noted) were seasonally adjusted to be consistent with state totals.

**ABOUT:** The Illinois Coalition for Jobs, Growth & Prosperity is a not-for-profit 501-c-4 organization. Coalition founding members include the Chicagoland Chamber of Commerce, the Illinois Business Roundtable, the Illinois Civil Justice League, the Illinois Manufacturers' Association, and the Illinois State Chamber of Commerce. Established to provide Illinois voters with information about government-related issues that have a direct effect on jobs, the Coalition represents firms employing more than a million Illinois workers.