

Illinois Job Index:

MSA Report

Release 9/08/2009	data Jan 1990 / Aug 2009	Issue 12.08	www.real.uiuc.edu
----------------------	-----------------------------	----------------	-------------------

NOTE: The US Bureau of Labor Statistics and the Illinois Department of Employment Security changed the way national and state employment data are coordinated to be more consistent. As a result, there have been some significant changes in estimates for Illinois over the past year.

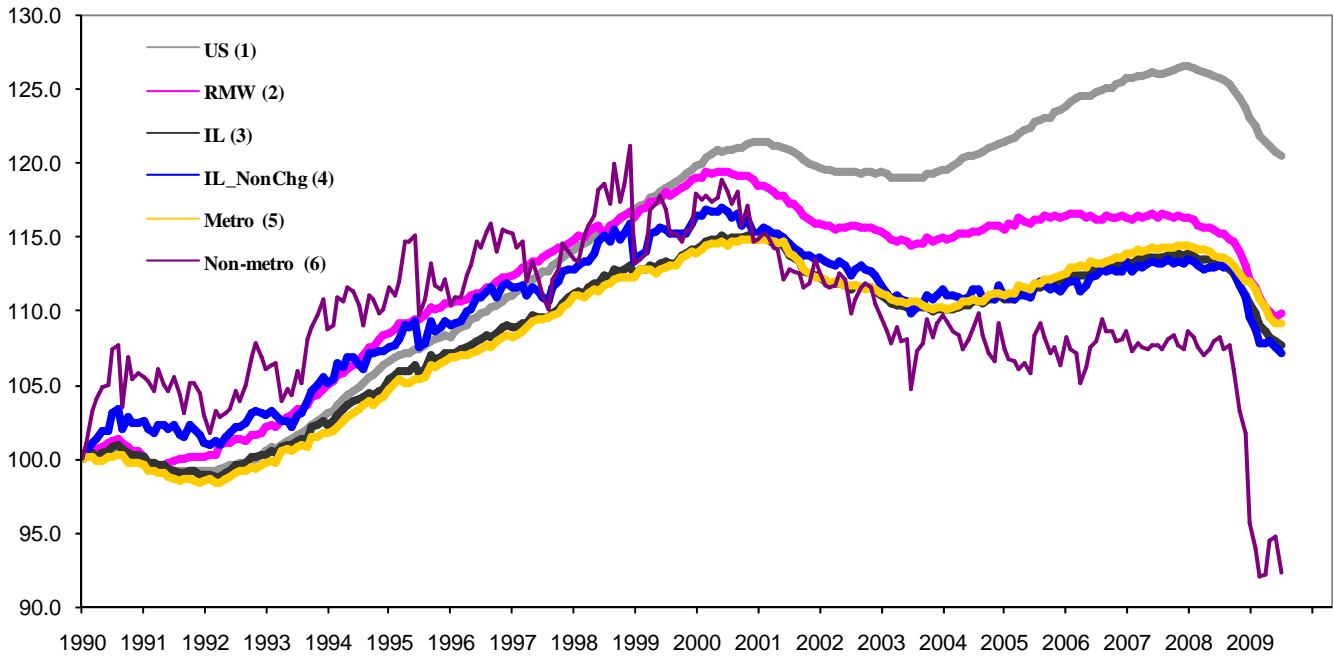
As a companion to the July 2009 Illinois Job Index that reports a **negative** rating, this MSA Report provides a localized picture on Illinois job growth and allows for comparisons between local economies, Illinois, the Nation and the Rest of the Midwest.

August 2009	Total non-farm employment	July 2009 Number of Jobs	June 2009 – July 2009		Last 12 months	
			Growth Rate (%)	Number of Jobs	Growth Rate (%)	Number of Jobs
	Nation	131,488,000	-0.19	-247,000	-4.18	-5,740,000
	Rest of Midwest (RMW)	18,755,100	0.19	35,800	-4.70	-925,500
	Illinois	5,669,800	-0.23	-13,000	-4.81	-286,500
	Illinois Metro	5,231,200	-0.02	-1,300	-3.88	-211,000
	Illinois non-Metro (Rural)	438,600	-2.61	-11,800	-14.69	-75,500
	Illinois Chicago (Upstate)	4,055,200	-0.13	-5,300	-4.63	-196,900
	Illinois non-Chicago	1,614,600	-0.48	-7,700	-5.26	-89,600

The monthly Illinois Job Index and MSA Report are provided as tools for elected officials, policy leaders and the public. We can better understand the Illinois economy and business climate by comparing and measuring Illinois employment growth rates against those of the Rest of the Midwest (RMW: Indiana, Iowa, Michigan, Missouri, Ohio and Wisconsin) and the Nation. Data and analysis is provided by the Illinois Economic Observatory / Regional Economics Applications Laboratory, University of Illinois. The MSA data (unless noted) were seasonally adjusted to be consistent with state totals.

Talking Points	
State, Downstate & Metro	<ul style="list-style-type: none"> Illinois lost 13,000 jobs at a rate of -0.23% in July, compared to a revised loss of 17,200 jobs in June. Illinois has lost 284,700 jobs since the financial crisis developed in September, 2008 The major geographic divisions, Chicago-Downstate or Metro-Non-metro all lost jobs in July. However, four out of the ten Metro areas added jobs this month. Illinois Non-metro shed 11,800 jobs at -2.61% this month, compared to a revised 1,200 job increase in June. In contrast, Metro posted a loss of -0.02%, losing 1,300 jobs, compared to a revised 18,400 job loss in the previous month. Chicago lost 5,300 jobs at -0.13% in July, the smallest single monthly loss since Sep 2008. Downstate lost 7,700 jobs at -0.48 %, compared to a revised 4,800 job loss in June. Over the last 12-month period, Illinois recorded a payroll cut of 286,500 jobs at -4.81%. This is the worst 12-month growth rate since the index started in Jan 1990. In terms of the 12-month aggregated account, Metro registered a negative -3.88% growth by shedding 211,000 jobs whereas Non-Metro lost 75,500 jobs at -14.69%. Chicago lost 196,900 jobs at -4.63% whereas Downstate lost 89,600 jobs at -5.26%.
MSA page (2-4)	<ul style="list-style-type: none"> Illinois Metro posted a negative growth rate of -0.02% by shedding 1,300 jobs in July. Out of the ten MSAs, Champaign-Urbana-Rantoul, Metro-East, Bloomington-Normal, and Rockford recorded positive growth. In terms of growth performance, three MSAs posted a net improvement from June to July, and seven declined. Metro-East ranked as the first in terms of 12-month growth performance, while Chicago ranked as the last. Over the last 12-month period, Metro-East grew the fastest at 2.38% by adding 5,600 jobs, followed by Champaign-Urbana-Rantoul at 0.30% by adding 300 jobs. Of the eight MSAs that posted negative growth rates, Chicago had the biggest loss of 197,700 jobs at -4.63%.

Total non-farm Employment growth Jan 1990 – July 2009



Talking Points

State, Downstate & Metro

- While the average growth for Illinois' 1990 to 2008 was 0.04%, the average from Jan 2008 to July 2009 is -0.29%, which is worse than the performance during the 2000-2001 down turn.
- Over the last 12-month period, the average growth rate for Metro was -0.33% and for Non-metro it was -1.30%.
- In contrast to the aggregate trend since January 1990, Illinois performed better than the RMW in terms of yearly aggregated trend both in 2007 and 2008. However, the 2009 average is in favor of the RMW.
- Downstate registered a -0.50% average growth rate in 2009 compared to an average gain of 0.04% in 2006 and 0.10% growth in 2007.

By MSA

Total non-farm employment Seasonally adjusted unless noted*	July 2009 Number of Jobs	June 2009 – July 2009			Last 12 months	
		Growth compared to Illinois	Growth Rate %	Number Of Jobs	Growth Rate %	Number of Jobs
Bloomington-Normal (B-N)	91,300	+	0.19	200	-0.37	-300
Champaign-Urbana (C-U-R)	113,900	+	1.59	1,800	0.30	300
Chicago	4,055,200	+	-0.13	-5,300	-4.63	-197,000
Davenport-Rock Island-Moline (D-R-M)	186,900	+	-0.23	-500	-1.32	-2,500
Decatur	52,800	+	-0.31	-200	-3.91	-2,100
Kankakee	42,700	-	-0.26	-100	-3.56	-1,600
Peoria	184,000	+	-0.13	-200	-2.87	-5,400
Rockford	153,400	+	0.20	300	-3.11	-4,900
Springfield	109,500	+	-0.06	-100	-2.71	-3,100
Metro-East	241,500	+	1.16	2,800	2.38	5,600
Illinois			-0.23	-13,000	-4.81	-286,500

MSA League Tables*: Non-farm Employment Growth Rate

Monthly growth:

Rank	June 2009	July 2009	Rank	Change**
1	Peoria (-0.03%)	Champaign-Urbana-Rantoul (1.59%)	1	↑(+9)
2	Bloomington-Normal (-0.08%)	Metro-East (1.16%)	2	↑(+7)
3	Davenport-Rock Island-Moline (-0.19%)	Rockford (0.2%)	3	↑(+5)
4	Springfield (-0.25%)	Bloomington-Normal (0.19%)	4	↓(-2)
5	Chicago (-0.3%)	Springfield (-0.06%)	5	↓(-1)
6	Kankakee (-0.33%)	Peoria (-0.13%)	6	↓(-5)
7	Decatur (-0.39%)	Chicago (-0.13%)	7	↓(-2)
8	Rockford (-0.66%)	Davenport-Rock Island-Moline (-0.23%)	8	↓(-5)
9	Metro-East (-0.66%)	Kankakee (-0.26%)	9	↓(-3)
10	Champaign-Urbana-Rantoul (-2.01%)	Decatur (-0.31%)	10	↓(-3)

Growth over last 12-months:

Rank	June 2009	July 2009	Rank	Change**
1	Metro-East (1.13%)	Metro-East (2.38%)	1	←(0)
2	Champaign-Urbana-Rantoul (0.08%)	Champaign-Urbana-Rantoul (0.3%)	2	←(0)
3	Bloomington-Normal (-0.75%)	Bloomington-Normal (-0.37%)	3	←(0)
4	Davenport-Rock Island-Moline (-1.06%)	Davenport-Rock Island-Moline (-1.32%)	4	←(0)
5	Springfield (-2.42%)	Springfield (-2.71%)	5	←(0)
6	Peoria (-2.61%)	Peoria (-2.87%)	6	←(0)
7	Kankakee (-3.51%)	Rockford (-3.11%)	7	↑(+1)
8	Rockford (-3.59%)	Kankakee (-3.56%)	8	↓(-1)
9	Decatur (-3.92%)	Decatur (-3.91%)	9	←(0)
10	Chicago (-4.61%)	Chicago (-4.63%)	10	←(0)

Talking Points

MSA League Tables

- The most remarkable upward move in July is by Champaign-Urbana-Rantoul (10th to 1st), which moved up by 9 spots.
- Metro-east (9th to 2nd), and Rockford (8th to 3rd) also gained in terms of rank from last month.
- Peoria (1st to 6th), and Davenport-Rock Island-Moline (3rd to 8th) both experienced deep falls this month.
- Bloomington-Normal (2nd to 4th), Springfield (4th to 5th), Chicago (5th to 7th), Kankakee (6th to 9th), and Decatur (7th to 10th) all experienced falls in July.
- In the 12 months growth league table, the only upward move was recorded for Rockford (8th to 7th), while the only downward move was by Kankakee (7th to 8th).
- Other eight MSAs maintained the same ranks.
- Metro-East is still on top, while Chicago is still in last place.

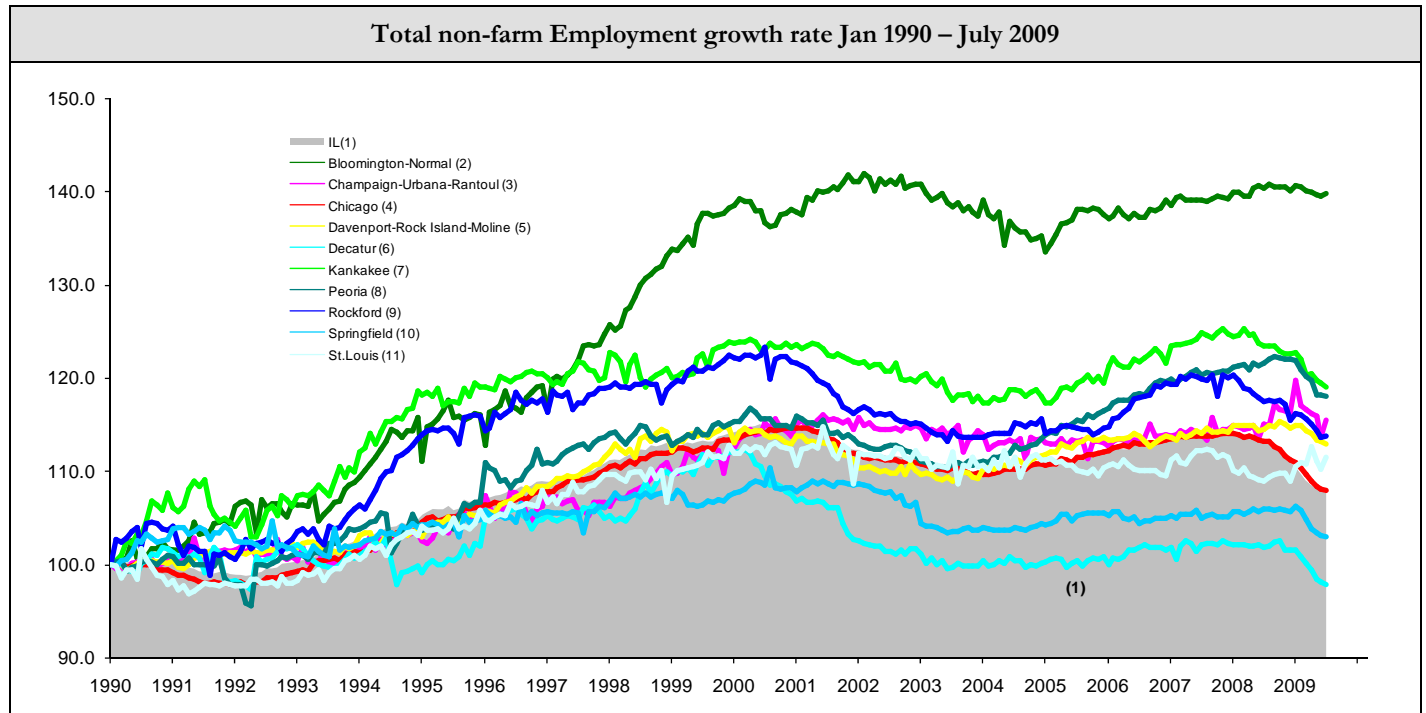
*MSA League Tables are based on revised employment data. For instances of equal growth rate for multiple MSAs ranks are decided based on change of growth rate from previous month.

**Changes indicate change in rank position compared to previous month and correspond to the MSA at the right column. Rise is indicated by a '↑' and decline by a '↓', and for an unchanged position a '←' is used. Figures in parenthesis indicate relative rank change from previous month.

Shaded area on above chart represents Illinois growth.

July 2009 MSA Employment by sectors (000s) *										
Market Area	Construction	Manufacturing	Trade, transportation & utilities	Information	Financial activities	Professional & business services	Education & health	Leisure & hospitality	Other Services	Government
Bloomington-Normal	2.93	5.31	13.74	1.01	12.19	17.65	9.59	10.18	3.19	15.62
Champaign-Urbana	4.37	9.47	18.70	2.39	4.65	8.34	13.30	10.87	3.42	38.48
Chicago	158.51	390.22	834.27	81.29	286.64	670.07	563.91	360.96	182.83	525.10
Davenport-Rock Island-Moline	8.92	25.66	39.31	2.99	8.41	23.27	25.04	18.20	7.25	27.97
Decatur	3.77	10.30	10.89	0.80	1.99	3.17	8.19	4.92	2.81	5.89
Kankakee	1.69	4.78	10.59	0.50	1.88	3.01	8.05	3.62	1.82	6.84
Peoria	9.08	27.90	34.16	2.49	8.80	21.98	32.52	17.90	7.79	21.17
Rockford	6.45	28.97	29.01	2.17	6.47	18.22	22.97	12.59	9.39	16.97
Springfield	4.67	3.26	17.50	2.30	7.24	10.82	17.06	10.28	6.54	29.97

* The Illinois Department of Employment Security does not collect sector employment data for Metro-East



MSA DESCRIPTION: **Bloomington-Normal (B-N)**: McLean Co. **Champaign-Urbana (C-U-R)**: Champaign Co., Ford Co. & Piatt Co. **Chicago**: Cook Co. IL, DeKalb Co. IL, DuPage Co. IL, Grundy Co. IL, Kane Co. IL, Kendall Co. IL, Lake Co. IL, McHenry Co. IL, Will Co. IL & Kenosha Co. WI **Davenport-Moline-Rock Island (D-R-M)**: Henry Co. IL, Mercer Co. IL, Rock Island Co. IL & Scott Co. IA **Decatur**: Macon Co. **Kankakee**: Kankakee Co. **Metro-East**: Bond Co., Calhoun Co., Clinton Co., Jersey Co., Macoupin Co., Madison Co., Monroe Co. & St. Clair Co. **Peoria-Pekin (Peoria)**: Marshall Co., Peoria Co., Stark Co., Tazewell Co. & Woodford Co. **Rockford**: Boone Co. & Winnebago Co. **Springfield**: Menard Co. & Sangamon Co.

The MSA data (unless noted) were seasonally adjusted to be consistent with state totals.

The Illinois Economic Observatory is part of the Institute of Government and Public Affairs at the University of Illinois.