

# Illinois Job Index:

## MSA Report

Release 3/21/2009	data Jan 1990 / Jan 2008	Issue 12.02	www.real.uiuc.edu
----------------------	-----------------------------	----------------	-------------------

NOTE: The US Bureau of Labor Statistics and the Illinois Department of Employment Security changed the way national and state employment data are coordinated to be more consistent. As a result, there have been some significant changes in estimates for Illinois over the past year.

As a companion to the January 2009 Illinois Job Index that reports a **negative** rating, this MSA Report provides a localized picture on Illinois job growth and allows for comparisons between local economies, Illinois, the Nation and the Rest of the Midwest.

February 2009	Total non-farm employment	Jan 2008 Number of Jobs	Dec 2008 – Jan 2009		Last 12 months	
			Growth Rate (%)	Number of Jobs	Growth Rate (%)	Number of Jobs
			Nation	134,419,000	-0.48	-655,000
Rest of Midwest (RMW)	19,164,900	-0.81	-157,000	-3.57	-710,200	
Illinois	5,820,200	-0.50	-29,300	-2.92	-175,100	
Illinois Metro	5,365,900	0.02	800	-2.02	-110,400	
Illinois non-Metro (Rural)	454,300	-6.22	-30,100	-12.46	-64,700	
Illinois Chicago (Upstate)	4,168,400	-0.17	-7,300	-2.64	-112,900	
Illinois non-Chicago	1,651,800	-1.31	-22,000	-3.63	-62,200	

The monthly Illinois Job Index and MSA Report are provided as tools for elected officials, policy leaders and the public. We can better understand the Illinois economy and business climate by comparing and measuring Illinois employment growth rates against those of the Rest of the Midwest (RMW: Indiana, Iowa, Michigan, Missouri, Ohio and Wisconsin) and the Nation. Data and analysis is provided by the Illinois Economic Observatory / Regional Economics Applications Laboratory, University of Illinois. The MSA data (unless noted) were seasonally adjusted to be consistent with state totals.

### Talking Points

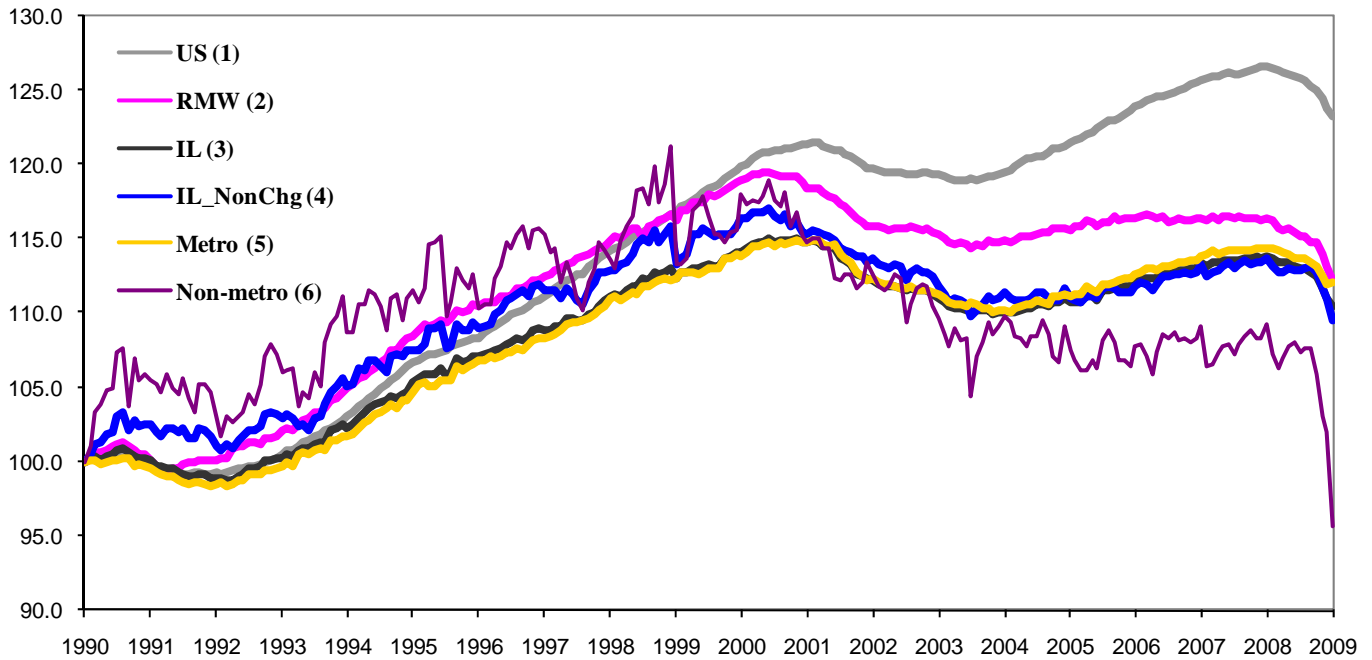
#### State, Downstate & Metro

- Illinois lost 29,300 jobs at a rate of -0.50% in January, compared to a revised loss of 31,300 jobs in December.
- Illinois has lost 134,300 jobs since financial crisis developed in September.
- The major geographic divisions, Chicago-Downstate or Metro-Non-metro have mixed performance in January. Seven out of ten Metro areas added jobs this month, while only three Metro areas lost jobs.
- Illinois Non-metro lost 30,100 jobs at -6.22% in January. This is the second worst monthly performance since January 1990. However, Metro posted growth of 0.02%, adding 800 jobs, compared to a revised 26,400 job loss in December.
- Downstate lost 22,000 jobs at -1.31% in January, compared to a revised 11,000 job loss in December. Chicago, at the same time, lost 7,300 jobs at -0.17%, compared to a revised 20,300 job loss last month.
- Over the last 12-month period, Illinois registered a -2.92% decline by shedding 175,100 jobs.
- In terms of the 12-month aggregated account, Metro posted a negative -2.02% growth by losing 110,400 jobs whereas Non-Metro lost 64,700 jobs at -12.46%. Chicago lost 112,900 jobs at -2.64% whereas Downstate lost 62,200 jobs at -3.63%.

#### MSA page (2-4)

- Illinois Metro posted a positive growth rate of 0.02% by adding 800 jobs in January. Within the MSAs, seven areas posted positive growth, and three areas posted negative growth.
- In terms of growth performance, four MSAs posted a net improvement from December to January, two unchanged, and four declined.
- Among the seven MSAs posting net gains in January, the biggest winners are Champaign-Urbana-Rantoul by adding 3,500 jobs at 3.08% and Metro-East by adding 3,200 jobs at 1.38%.
- Over the last 12-month period, Champaign-Urbana-Rantoul grew the fastest at 4.35% by adding 4,900 jobs, followed by Peoria at 0.75% by adding 1,400 jobs and Metro-East at 0.46% by 1,100 jobs. Of the four MSAs that posted negative growth rates, Chicago had the biggest loss of 112,900 jobs at -2.64%.

Total non-farm Employment growth Jan 1990 – Jan 2009



Talking Points

State, Downstate & Metro

- While the average growth for Illinois' 1990 to 2008 was 0.04%, the average for 2008 is -0.20%, which is worse than the performance during the 2000-2001 downturn.
- Over the last 12-month period, the average growth rate for Metro was -0.17% and for Non-metro it was -1.08%.
- Different from the aggregate trend since January 1990, Illinois did better than the RMW in terms of yearly aggregated trend both in 2006 and 2007. The 2008 average is also in favor of Illinois.
- Downstate registered a -0.17% average growth rate in 2008 compared to an average gain of 0.04% in 2006 and 0.10% growth in 2007.

By MSA

Market Area	Dec 2008 Number of Jobs	Dec 2008 –Jan 2009			Last 12 months	
		Growth compared to Illinois	Growth Rate %	Number Of Jobs	Growth Rate %	Number of Jobs
Bloomington-Normal (B-N)	91,800	+	0.37	300	0.60	500
Champaign-Urbana (C-U-R)	118,300	+	3.08	3,500	4.35	4,900
Chicago	4,168,400	+	-0.17	-7,300	-2.64	-112,900
Davenport-Rock Island-Moline (D-R-M)	190,400	+	0.32	600	0.06	100
Decatur	54,900	+	0.19	100	-0.52	-300
Kankakee	43,900	-	-2.38	-1,100	-1.61	-700
Peoria	190,200	+	-0.11	-200	0.75	1,400
Rockford	156,600	+	0.60	900	-3.36	-5,400
Springfield	113,000	+	0.56	600	0.72	800
Metro-East	238,400	+	1.38	3,200	0.46	1,100
<b>Illinois</b>			<b>-0.50</b>	<b>-29,300</b>	<b>-2.92</b>	<b>-175,100</b>

# MSA League Tables\*: Non-farm Employment Growth Rate

Monthly growth:

Rank	December 2008	January 2009	Rank	Change**
1	Kankakee (0.52%)	Champaign-Urbana-Rantoul (3.08%)	1	↑(+5)
2	Peoria (0.04%)	Metro-East (1.38%)	2	↑(+7)
3	Decatur (-0.05%)	Rockford (0.6%)	3	↑(+7)
4	Springfield (-0.12%)	Springfield (0.56%)	4	←(0)
5	Bloomington-Normal (-0.3%)	Bloomington-Normal (0.37%)	5	←(0)
6	Champaign-Urbana-Rantoul (-0.31%)	Davenport-Rock Island-Moline (0.32%)	6	↑(+1)
7	Davenport-Rock Island-Moline (-0.4%)	Decatur (0.19%)	7	↓(-4)
8	Chicago (-0.48%)	Peoria(-0.11%)	8	↓(-6)
9	Metro-East (-1.09%)	Chicago(-0.17%)	9	↓(-1)
10	Rockford (-1.42%)	Kankakee (-2.38%)	10	↓(-9)

Growth over last 12 months:

Rank	December 2008	January 2009	Rank	Change**
1	Champaign-Urbana-Rantoul (1.7%)	Champaign-Urbana-Rantoul (4.35%)	1	←(0)
2	Kankakee (1.64%)	Peoria (0.75%)	2	↑(+1)
3	Peoria (1.11%)	Springfield (0.72%)	3	↑(+2)
4	Bloomington-Normal (0.73%)	Bloomington-Normal (0.6%)	4	←(0)
5	Springfield (0.52%)	Metro-East (0.46%)	5	↑(+3)
6	Davenport-Rock Island-Moline(0.43%)	Davenport-Rock Island-Moline (0.06%)	6	←(0)
7	Decatur (-0.63%)	Decatur(-0.52%)	7	←(0)
8	Metro-East (-2.3%)	Kankakee (-1.61%)	8	↓(-6)
9	Chicago (-2.48%)	Chicago(-2.64%)	9	←(0)
10	Rockford (-3.77%)	Rockford (-3.36%)	10	←(0)

## Talking Points

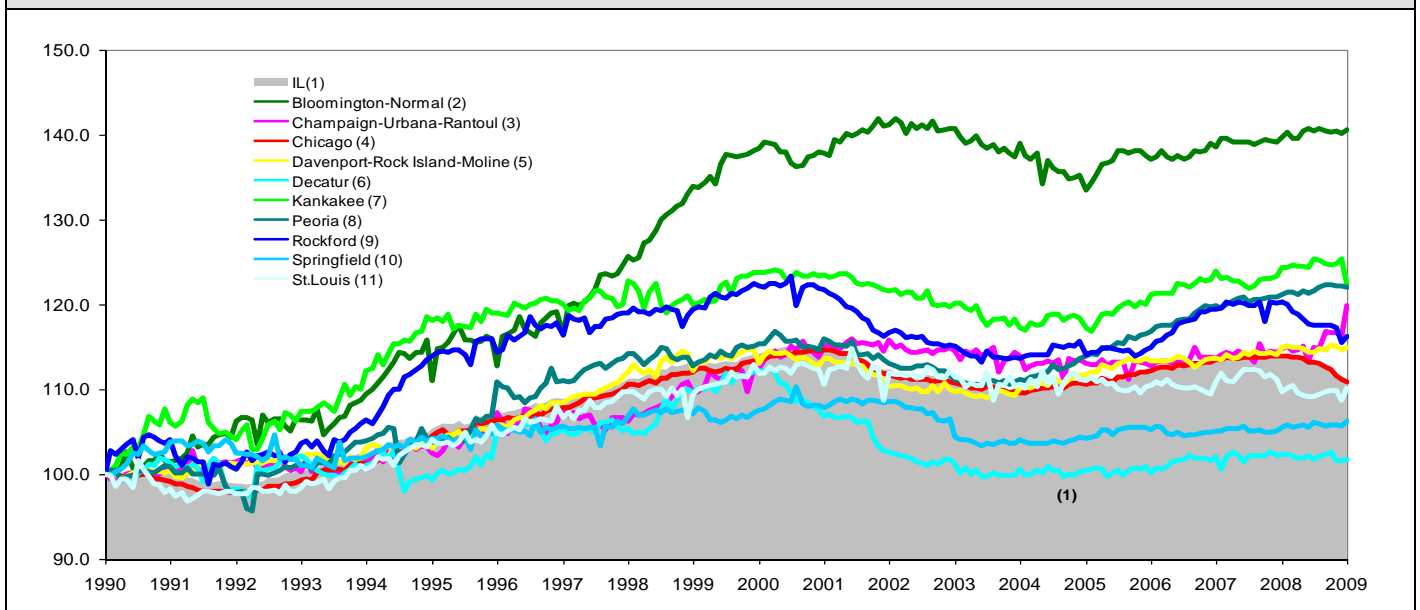
### MSA League Tables

- The most remarkable upward moves in January are by Metro-East (9<sup>th</sup> to 2<sup>nd</sup>), and Rockford (10<sup>th</sup> to 3<sup>rd</sup>), which both moved up by 7 spots.
- Champaign-Urbana-Rantoul (6<sup>th</sup> to 1<sup>st</sup>) also made significant gain in terms of rank from December.
- Kankakee (1<sup>st</sup> to 10<sup>th</sup>) experienced a deep fall in January.
- Decatur (3<sup>rd</sup> to 7<sup>th</sup>), Peoria (2<sup>nd</sup> to 8<sup>th</sup>), and Chicago (8<sup>th</sup> to 9<sup>th</sup>) as well experienced falls in January.
- Springfield, and Bloomington-Normal kept the same ranks this month.
- In the 12 months growth league table, upward moves were recorded for Metro-East (8<sup>th</sup> to 5<sup>th</sup>), Springfield (5<sup>th</sup> to 3<sup>rd</sup>), and Peoria (3<sup>rd</sup> to 2<sup>nd</sup>).
- Champaign-Urbana-Rantoul is on top, while Rockford became the last instead of Metro-East.
- Kankakee (2<sup>nd</sup> to 8<sup>th</sup>) experienced fall in the first month of 2009.

\*MSA League Tables are based on revised employment data. For instances of equal growth rate for multiple MSAs ranks are decided based on change of growth rate from previous month.

\*\*Changes indicate change in rank position compared to previous month and correspond to the MSA at the right column. Rise is indicated by a '↑' and decline by a '↓' and for an unchanged position a '←' is used. Figures in parenthesis indicate relative rank change from previous month.

### Total non-farm Employment growth rate Jan 1990 – Jan 2009



Shaded area on above chart represents Illinois growth.

MSA DESCRIPTION: **Bloomington-Normal (B-N):** McLean Co. **Champaign-Urbana (C-U-R):** Champaign Co., Ford Co. & Piatt Co. **Chicago:** Cook Co. IL, DeKalb Co. IL, DuPage Co. IL, Grundy Co. IL, Kane Co. IL, Kendall Co. IL, Lake Co. IL, McHenry Co. IL, Will Co. IL & Kenosha Co. WI **Davenport-Moline-Rock Island (D-R-M):** Henry Co. IL, Mercer Co. IL, Rock Island Co. IL & Scott Co. IA **Decatur:** Macon Co. **Kankakee:** Kankakee Co. **Metro-East:** Bond Co., Calhoun Co., Clinton Co., Jersey Co., Macoupin Co., Madison Co., Monroe Co. & St. Clair Co. **Peoria-Pekin (Peoria):** Marshall Co., Peoria Co., Stark Co., Tazewell Co. & Woodford Co. **Rockford:** Boone Co. & Winnebago Co. **Springfield:** Menard Co. & Sangamon Co.

The MSA data (unless noted) were seasonally adjusted to be consistent with state totals.

**The Illinois Economic Observatory** is part of the Institute of Government and Public Affairs at the University of Illinois.