

Illinois Job Index:

MSA Report

Release 7/8/2009	data Jan 1990 / June 2009	Issue 12.06	www.real.uiuc.edu
---------------------	------------------------------	----------------	-------------------

NOTE: The US Bureau of Labor Statistics and the Illinois Department of Employment Security changed the way national and state employment data are coordinated to be more consistent. As a result, there have been some significant changes in estimates for Illinois over the past year.

As a companion to the June 2009 Illinois Job Index that reports a **negative** rating, this MSA Report provides a localized picture on Illinois job growth and allows for comparisons between local economies, Illinois, the Nation and the Rest of the Midwest.

June 2009	Total non-farm employment	May 2009 Number of Jobs	Apr 2009 – May 2009		Last 12 months	
			Growth Rate (%)	Number of Jobs	Growth Rate (%)	Number of Jobs
	Nation	132,151,000	-0.26	-345,000	-3.90	-5,366,000
	Rest of Midwest (RMW)	18,789,600	-0.26	-48,700	-4.91	-970,800
	Illinois	5,700,400	-0.30	-17,400	-4.58	-273,500
	Illinois Metro	5,246,193	-0.63	-33,500	-3.94	-215,400
	Illinois non-Metro (Rural)	454,207	3.67	16,100	-11.35	-58,100
	Illinois Chicago (Upstate)	4,068,220	-0.58	-23,600	-4.69	-200,300
	Illinois non-Chicago	1,632,180	0.38	6,200	-4.29	-73,200

The monthly Illinois Job Index and MSA Report are provided as tools for elected officials, policy leaders and the public. We can better understand the Illinois economy and business climate by comparing and measuring Illinois employment growth rates against those of the Rest of the Midwest (RMW: Indiana, Iowa, Michigan, Missouri, Ohio and Wisconsin) and the Nation. Data and analysis is provided by the Illinois Economic Observatory / Regional Economics Applications Laboratory, University of Illinois. The MSA data (unless noted) were seasonally adjusted to be consistent with state totals.

Talking Points

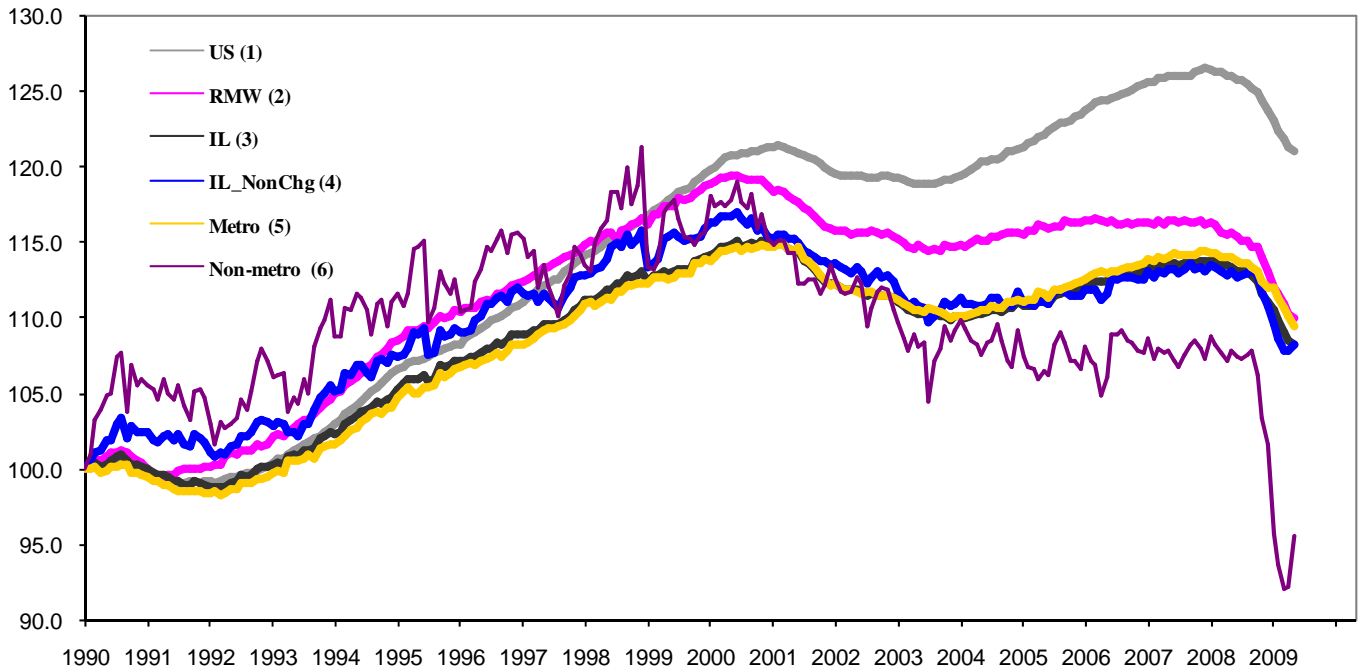
State, Downstate & Metro

- Illinois lost 17,400 jobs at a rate of -0.30% in May, compared to a revised loss of 25,100 jobs in April.
- Illinois has lost 254,100 jobs since the financial crisis developed in September, 2008
- The major geographic divisions, Chicago-Downstate or Metro-Non-metro have mixed performance in May. All the ten Metro areas lost jobs this month.
- Illinois Non-metro added 16,100 jobs at 3.67% this month, compared to a revised 500 job loss in April. In contrast, Metro posted a loss of -0.63%, shedding 33,500 jobs, compared to a revised 25,600 job loss in the previous month.
- Chicago lost 23,600 jobs at -0.58% in May, compared to a revised 25,600 job loss last month. Downstate, on the other hand, added 6,200 jobs at 0.38 %, compared to a revised 500 job increase in April.
- Over the last 12-month period, Illinois recorded a -4.58% decline by shedding 273,500 jobs.
- In terms of the 12-month aggregated account, Metro registered a negative -3.94% growth by shedding 215,400 jobs whereas Non-Metro lost 58,100 jobs at -11.35%. Chicago lost 200,300 jobs at -4.69% whereas Downstate lost 73,200 jobs at -4.29%.

MSA page (2-4)

- Illinois Metro posted a negative growth rate of -0.63% by shedding 33,500 jobs in May. All the ten MSAs posted negative growth.
- In terms of growth performance, four MSAs posted a net improvement from April to May, one was unchanged, and five declined.
- Over the last 12-month period, Metro-East grew the fastest at 1.54% by adding 3,700 jobs, followed by Champaign-Urbana-Rantoul at 0.89% by adding 1,000 jobs. Of the eight MSAs that posted negative growth rates, Chicago had the biggest loss of 200,300 jobs at -4.69%.

Total non-farm Employment growth Jan 1990 – May 2009



Talking Points

State, Downstate & Metro

- While the average growth for Illinois' 1990 to 2008 was 0.04%, the average for 2008 is -0.20%, which is worse than the performance during the 2000-2001 downturn.
- Over the last 12-month period, the average growth rate for Metro was -0.33% and for Non-metro it was -0.98%.
- In contrast to the aggregate trend since January 1990, Illinois performed better than the RMW in terms of yearly aggregated trend both in 2007 and 2008. The 2009 average is also in favor of Illinois.
- Downstate registered a -0.36% average growth rate in 2009 compared to an average gain of 0.04% in 2006 and 0.10% growth in 2007.

By MSA

Total non-farm employment Seasonally adjusted unless noted*	May 2009 Number of Jobs	Apr 2009 – May 2009			Last 12 months	
		Growth compared to Illinois	Growth Rate %	Number Of Jobs	Growth Rate %	Number of Jobs
Bloomington-Normal (B-N)	91,193	+	-0.21	-200	-0.48	-400
Champaign-Urbana (C-U-R)	114,465	+	-0.15	-200	0.89	1,000
Chicago	4,068,220	+	-0.58	-23,600	-4.69	-200,300
Davenport-Rock Island-Moline (D-R-M)	187,721	+	-0.65	-1,200	-1.30	-2,500
Decatur	52,999	+	-1.33	-700	-3.57	-2,000
Kankakee	43,039	-	-0.38	-200	-3.73	-1,700
Peoria	184,317	+	-1.30	-2,400	-2.69	-5,100
Rockford	154,201	+	-0.67	-1,000	-3.29	-5,300
Springfield	109,647	+	-0.62	-700	-2.50	-2,800
Metro-East	240,391	+	-1.32	-3,200	1.54	3,700
Illinois			-0.30	-17,400	-4.58	-273,500

MSA League Tables*: Non-farm Employment Growth Rate

Monthly growth:

Rank	April 2009	May 2009	Rank	Change**
1	Metro-East (1.51%)	Champaign-Urbana-Rantoul (-0.15%)	1	↑(+5)
2	Kankakee (0.29%)	Bloomington-Normal (-0.21%)	2	↑(+1)
3	Bloomington-Normal (-0.1%)	Kankakee (-0.38%)	3	↓(-1)
4	Davenport-Rock Island-Moline (-0.17%)	Chicago (-0.58%)	4	↑(+4)
5	Peoria (-0.33%)	Springfield (-0.62%)	5	↑(+5)
6	Champaign-Urbana-Rantoul (-0.4%)	Davenport-Rock Island-Moline (-0.65%)	6	↓(-2)
7	Rockford (-0.48%)	Rockford (-0.67%)	7	↔(0)
8	Chicago (-0.62%)	Peoria (-1.3%)	8	↓(-3)
9	Decatur (-0.67%)	Metro-East (-1.32%)	9	↓(-8)
10	Springfield (-0.99%)	Decatur (-1.33%)	10	↓(-1)

Growth over last 12-months:

Rank	April 2009	May 2009	Rank	Change**
1	Metro-East (2.85%)	Metro-East (1.54%)	1	↔(0)
2	Champaign-Urbana-Rantoul (1.31%)	Champaign-Urbana-Rantoul (0.89%)	2	↔(0)
3	Bloomington-Normal (0.32%)	Bloomington-Normal (-0.48%)	3	↔(0)
4	Davenport-Rock Island-Moline (-0.69%)	Davenport-Rock Island-Moline (-1.3%)	4	↔(0)
5	Peoria (-0.94%)	Springfield (-2.5%)	5	↑(+1)
6	Springfield (-1.74%)	Peoria (-2.69%)	6	↓(-1)
7	Decatur (-2.47%)	Rockford (-3.29%)	7	↑(+1)
8	Rockford (-3.07%)	Decatur (-3.57%)	8	↓(-1)
9	Kankakee (-3.29%)	Kankakee (-3.73%)	9	↔(0)
10	Chicago (-4.26%)	Chicago (-4.69%)	10	↔(0)

Talking Points

MSA League Tables

- The most remarkable upward move in May is by Champaign-Urbana-Rantoul (6th to 1st) and Springfield (10th to 5th), which both moved up by 5 spots.
- Chicago (8th to 4th), and Bloomington-Normal (3rd to 2nd) also gained in rank from last month.
- Metro-east (1st to 9th) experienced a deep fall this month.
- Kankakee (2nd to 3rd), Davenport-Rock Island-Moline (4th to 6th), Peoria (5th to 8th), and Decatur (9th to 10th) as well experienced falls in May.
- Rockford (6th to 6th) kept the same rank this month.
- In the 12 months growth league table, upward moves were recorded for Springfield (6th to 5th), and Rockford (8th to 9th)
- Peoria (5th to 6th), Decatur (7th to 8th) experienced falls in May.
- Metro-East is on top, while Chicago replaced Kankakee in last place

*MSA League Tables are based on revised employment data. For instances of equal growth rate for multiple MSAs ranks are decided based on change of growth rate from previous month.

**Changes indicate change in rank position compared to previous month and correspond to the MSA at the right column. Rise is indicated by a '↑' and decline by a '↓' and for an unchanged position a '↔' is used. Figures in parenthesis indicate relative rank change from previous month.

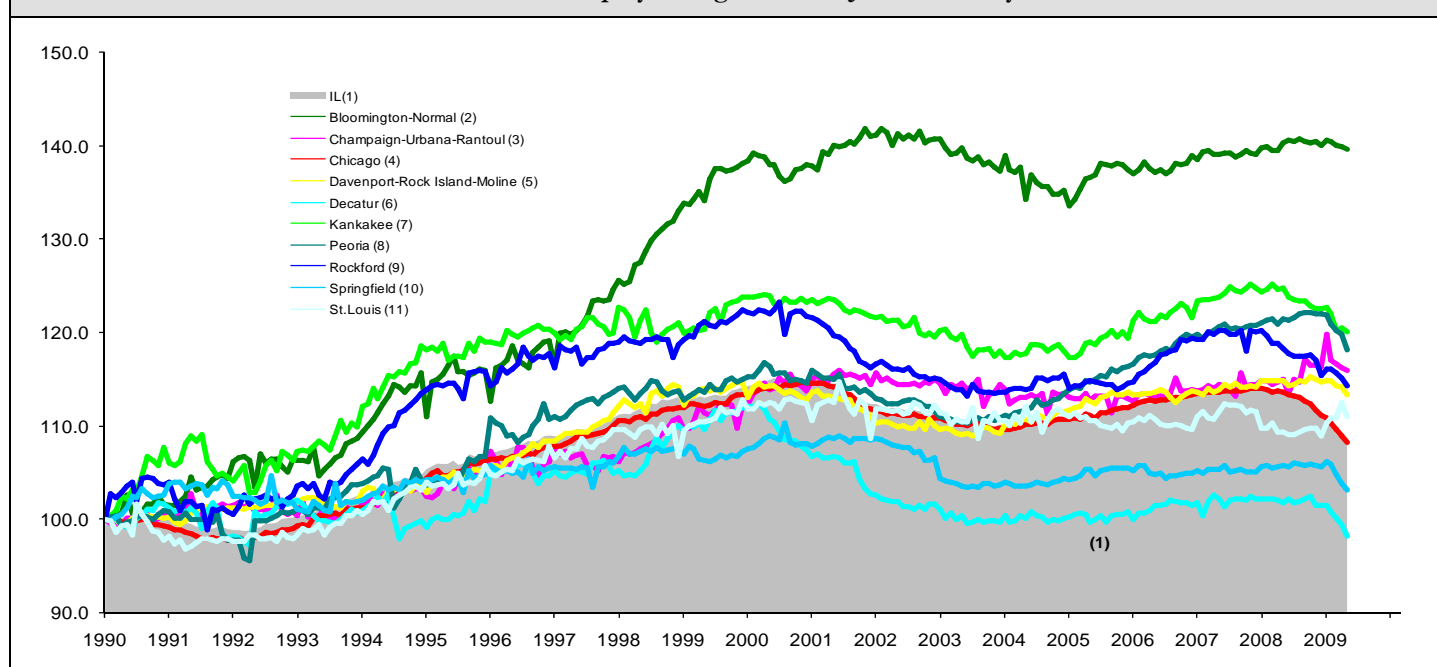
Shaded area on above chart represents Illinois growth.

May 2009 MSA Employment by sectors (000s) *

Market Area	Construction	Manufacturing	Trade, transportation & utilities	Information	Financial activities	Professional & business services	Education & health	Leisure & hospitality	Other Services	Government
Bloomington-Normal	2.95	5.45	13.67	1.01	12.22	17.45	9.62	9.99	3.29	15.54
Champaign-Urbana	4.56	9.52	18.67	2.29	4.65	8.32	13.26	10.70	3.40	39.10
Chicago	160.10	393.24	833.72	82.95	289.76	671.92	563.96	360.98	185.79	524.89
Davenport-Rock Island-Moline	9.02	25.82	39.27	3.02	8.39	23.99	25.27	18.26	7.38	27.58
Decatur	3.83	10.75	10.96	0.79	2.01	3.11	8.23	4.70	2.71	5.96
Kankakee	1.55	4.80	10.53	0.50	1.89	3.13	8.15	3.73	1.91	6.80
Peoria	8.99	28.37	34.31	2.46	8.76	22.12	32.43	18.00	7.79	21.10
Rockford	6.62	29.15	29.19	2.17	6.45	18.06	22.92	12.49	9.48	17.47
Springfield	4.66	3.28	17.48	2.42	7.32	10.49	17.28	10.28	6.51	30.01

* The Illinois Department of Employment Security does not collect sector employment data for Metro-East

Total non-farm Employment growth rate Jan 1990 – May 2009



MSA DESCRIPTION: **Bloomington-Normal (B-N)**: McLean Co. **Champaign-Urbana (C-U-R)**: Champaign Co., Ford Co. & Piatt Co. **Chicago**: Cook Co. IL, DeKalb Co. IL, DuPage Co. IL, Grundy Co. IL, Kane Co. IL, Kendall Co. IL, Lake Co. IL, McHenry Co. IL, Will Co. IL & Kenosha Co. WI **Davenport-Moline-Rock Island (D-R-M)**: Henry Co. IL, Mercer Co. IL, Rock Island Co. IL & Scott Co. IA **Decatur**: Macon Co. **Kankakee**: Kankakee Co. **Metro-East**: Bond Co., Calhoun Co., Clinton Co., Jersey Co., Macoupin Co., Madison Co., Monroe Co. & St. Clair Co. **Peoria-Pekin (Peoria)**: Marshall Co., Peoria Co., Stark Co., Tazewell Co. & Woodford Co. **Rockford**: Boone Co. & Winnebago Co. **Springfield**: Menard Co. & Sangamon Co.

The MSA data (unless noted) were seasonally adjusted to be consistent with state totals.

The Illinois Economic Observatory is part of the Institute of Government and Public Affairs at the University of Illinois.