

Illinois Job Index:

MSA Report

Release 04/08/2010	data Jan 1990 / Feb 2010	Issue 13.3	www.real.illinois.edu
-----------------------	-----------------------------	---------------	-----------------------

Note: IDES revised their estimates for the number of jobs at the beginning of 2010.

As a companion to the February 2010 Illinois Job Index that reports a little change, this MSA Report provides a localized picture on Illinois job growth and allows for comparisons between local economies, Illinois, the Nation and the Rest of the Midwest.

February 2010	Total non-farm employment	Feb 2010 Number of Jobs	Jan 2010 – Feb 2010		Last 12 months	
			Growth Rate (%)	Number of Jobs	Growth Rate (%)	Number of Jobs
	Nation	129,526,000	-0.03	-36,000	-2.48	-3,297,000
	Rest of Midwest (RMW)	18,424,800	-0.02	-2,800	-2.99	-568,300
	Illinois	5,580,600	-0.02	-900	-3.33	-192,200
	Illinois Metro	5,084,800	-0.11	-5,700	-3.61	-190,200
	Illinois non-Metro (Rural)	495,800	0.98	4,800	-0.40	-2,000
	Illinois Chicago (Upstate)	3,958,100	-0.20	-7,900	-3.70	-152,000
	Illinois non-Chicago	1,622,500	0.43	7,000	-2.42	-40,200

The monthly Illinois Job Index and MSA Report are provided as tools for elected officials, policy leaders and the public. We can better understand the Illinois economy and business climate by comparing and measuring Illinois employment growth rates against those of the Rest of the Midwest (RMW: Indiana, Iowa, Michigan, Missouri, Ohio and Wisconsin) and the Nation. Data and analysis is provided by the Illinois Economic Observatory / Regional Economics Applications Laboratory, University of Illinois. The MSA data (unless noted) were seasonally adjusted to be consistent with state totals.

Talking Points

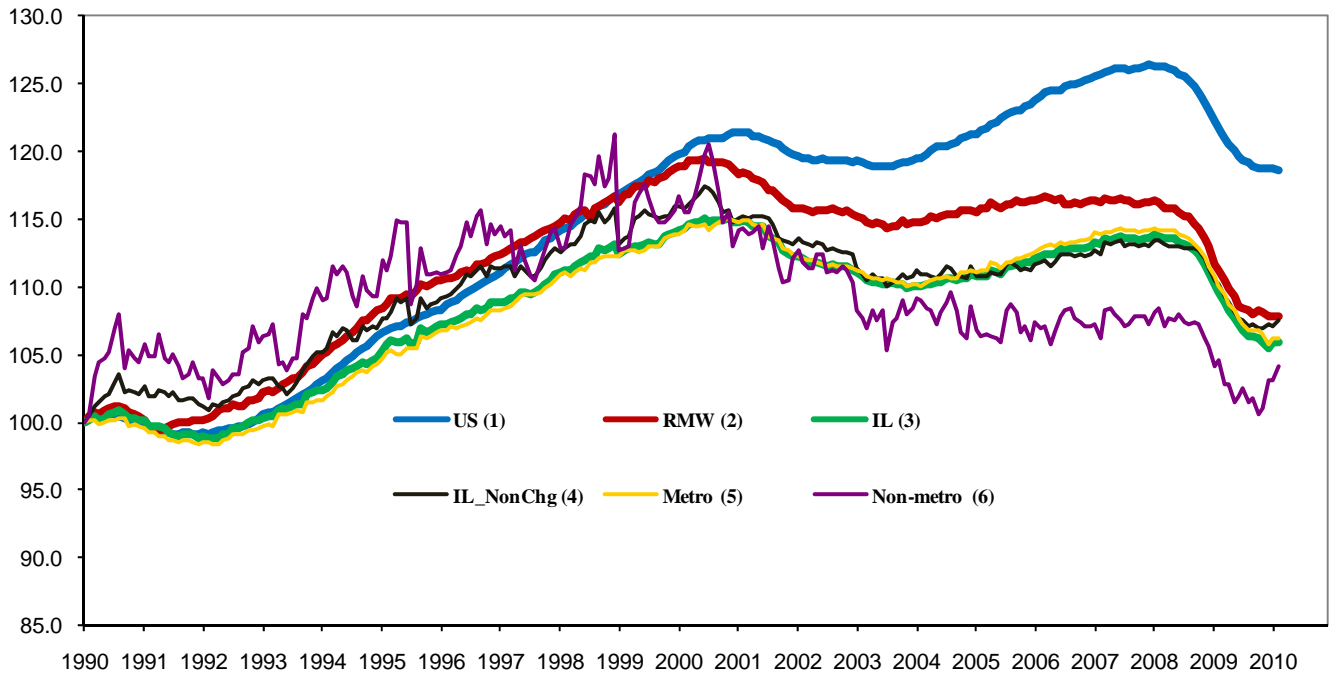
State, Downstate & Metro

- Illinois cut 900 jobs at a rate of -0.02% in February 2010, compared to a revised 23,300 job gain in January.
- Illinois has lost 405,400 jobs since the economic crisis developed in December, 2007
- The major geographic divisions, Chicago-Downstate or Metro-Non-metro have mixed performance in February.
- Illinois Non-metro added 4,800 jobs at 0.98% this month; it has 104.1% jobs compared to January 1990. At the same time, Metro posted a loss of -0.11%, shedding 5,700 jobs, compared to a revised 23,600 job gain in the previous month.
- Chicago lost 7,900 jobs at -0.20% in February 2010, compared to a revised 26,000 job gain last month. On the other hand, Downstate added 7000 jobs at 0.43%, compared to a revised 2,700 job loss in January.
- Over the last 12-months, Illinois recorded a payroll cut of 192,200 jobs at -3.61%. This is better than the highest month -5.89% in August 2009.
- In terms of the 12-month aggregated account, Metro registered a negative -3.61% growth by shedding 190,200 jobs whereas Non-Metro lost -2,000 jobs at -0.40%. Chicago lost 152,000 jobs at -3.70% whereas Downstate lost 40,200 jobs at -2.42%.

MSA page (2-4)

- Illinois Metro posted a negative growth rate of -0.11% by shedding 5,700 jobs in the second month of 2010. Three out of the ten MSAs posted positive growth.
- In terms of growth performance, four MSAs posted a net improvement from January to February, five declined in terms of rank.
- Rockford ranked as the first in terms of monthly growth performance, while Chicago ranked as the last.
- Over the last 12-month period, Kankakee grew the fastest at 1.01% by adding 400 jobs. Of the nine MSAs that posted negative growth rates, Peoria had the biggest percentage loss of -5.69% by shedding 10,500 jobs.

Total non-farm Employment growth Jan 1990 – Feb 2010



Talking Points

State, Downstate & Metro

- While the average growth for Illinois between 1990 and 2008 was 0.04%, the average from December 2007 to February 2010 is -0.26%, which is worse than the performance during the 2000-2001 downturn.
- Over the last 12-month period, the average growth rate for Metro was -0.31% and for Non-metro it was -0.03%.
- Illinois performed better than the RMW in terms of yearly aggregated trend in 2008, but in 2009, Illinois's performance is worse than both RMW and the nation.
- Downstate registered a -0.32% average growth rate in 2009 compared to an average gain of 0.04% in 2006, 0.10% growth in 2007, and -0.17% decline in 2008.

By MSA

Total non-farm employment Seasonally adjusted unless noted*	Feb 2010 Number of Jobs	Jan 2010 – Feb 2010			Last 12 months	
		Growth compared to Illinois	Growth Rate %	Number Of Jobs	Growth Rate %	Number of Jobs
Bloomington-Normal (B-N)	88,300	+	0	0	-2.52	-2,300
Champaign-Urbana (C-U-R)	108,800	+	0.71	800	-2.14	-2,400
Chicago	3,958,100	-	-0.20	-7,900	-3.70	-152,000
Davenport-Rock Island-Moline (D-R-M)	177,700	+	-0.02	0	-3.41	-6,300
Decatur	51,700	-	-0.14	-100	-5.00	-2,700
Kankakee	43,600	+	0	0	1.01	400
Peoria	174,000	-	-0.10	-200	-5.69	-10,500
Rockford	142,300	+	1.24	1,700	-4.27	-6,400
Springfield	110,100	-	-0.10	-100	-1.15	-1,300
Metro-East	230,100	+	0.03	100	-2.88	-6,800
Illinois			-0.02	-900	-3.33	-192,200

MSA League Tables*: Non-farm Employment Growth Rate

Monthly growth:

Rank	Jan 2010	Feb 2010	Rank	Change**
1	Davenport-Rock Island-Moline (0.74%)	Rockford (1.24%)	1	↑(+7)
2	Chicago (0.66%)	Champaign-Urbana-Rantoul (0.71%)	2	↑(+8)
3	Kankakee (0.53%)	Metro-East (0.03%)	3	↑(+6)
4	Decatur (0.13%)	Kankakee (0.02%)	4	↓(-1)
5	Springfield (-0.1%)	Bloomington-Normal (0.01%)	5	↑(+1)
6	Bloomington-Normal (-0.18%)	Davenport-Rock Island-Moline (-0.02%)	6	↓(-5)
7	Peoria (-0.22%)	Peoria (-0.1%)	7	↔(0)
8	Rockford (-0.33%)	Springfield (-0.1%)	8	↓(-3)
9	Metro-East (-0.83%)	Decatur (-0.14%)	9	↓(-5)
10	Champaign-Urbana-Rantoul (-0.89%)	Chicago (-0.2%)	10	↓(-8)

Growth over last 12-months:

Rank	Jan 2010	Feb 2010	Rank	Change**
1	Kankakee (0.53%)	Kankakee (1.01%)	1	↔(0)
2	Springfield (-1.37%)	Springfield (-1.15%)	2	↔(0)
3	Bloomington-Normal (-2.26%)	Champaign-Urbana-Rantoul (-2.14%)	3	↑(+4)
4	Metro-East (-2.78%)	Bloomington-Normal (-2.52%)	4	↓(-1)
5	Davenport-Rock Island-Moline (-3.85%)	Metro-East (-2.88%)	5	↓(-1)
6	Chicago (-4.1%)	Davenport-Rock Island-Moline (-3.41%)	6	↓(-1)
7	Champaign-Urbana-Rantoul (-5.73%)	Chicago (-3.7%)	7	↓(-1)
8	Rockford (-5.85%)	Rockford (-4.27%)	8	↔(0)
9	Decatur (-5.89%)	Decatur (-5%)	9	↔(0)
10	Peoria (-6.48%)	Peoria (-5.69%)	10	↔(0)

Talking Points

MSA League Tables

- The most remarkable upward move in February was Champaign-Urbana-Rantoul (10th to 2nd), which moved up 8 spots.
- Rockford (8th to 1st), Metro-East (9th to 3rd), and Bloomington-Normal (6th to 5th) all gained in terms of rank from last month.
- Chicago (2nd to 10th) experienced deepest fall this month. Decatur (4th to 9th), Springfield (5th to 8th), Davenport-Rock Island-Moline (1st to 5th), and Kankakee (3rd to 4th) also moved down in terms of rank.
- In the 12 months growth league table, the upward moves were recorded for Champaign-Urbana-Rantoul (7th to 3rd), while the downward moves were Bloomington-Normal (3rd to 4th), Metro-East (4th to 5th), Davenport-Rock Island-Moline (5th to 6th), and Chicago (6th to 7th).
- The other five MSAs maintained the same ranks.
- Kankakee is on the top, while Peoria is in the last place.

*MSA League Tables are based on revised employment data. For instances of equal growth rate for multiple MSAs ranks are decided based on change of growth rate from previous month.

**Changes indicate change in rank position compared to previous month and correspond to the MSA at the right column. Rise is indicated by a '↑' and decline by a '↓' and for an unchanged position a '↔' is used. Figures in parenthesis indicate relative rank change from previous month.

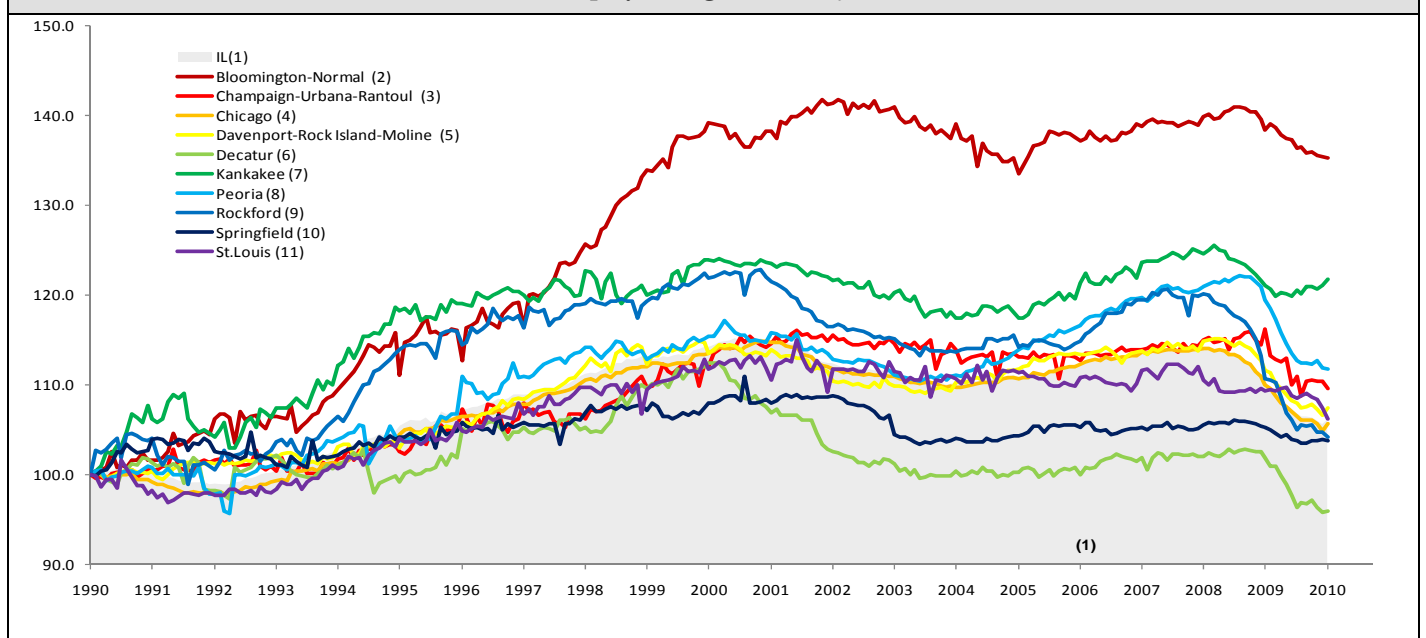
Shaded area on above chart represents Illinois growth.

February 2010 MSA Employment by Sectors (000s) *

Market Area	Construction	Manufacturing	Trade, transportation & utilities	Information	Financial activities	Professional & business services	Education & health	Leisure & hospitality	Other Services	Government
Bloomington-Normal	2.70 (3.1%)	4.02 (4.6%)	13.33 (15.1%)	0.99 (1.1%)	12.44 (14.1%)	16.9 (19.1%)	9.84 (11.1%)	9.35 (10.6%)	3.39 (3.8%)	15.33 (17.4%)
Champaign-Urbana	3.43 (3.2%)	8.09 (7.4%)	17.51 (16.1%)	2.59 (2.4%)	4.54 (4.2%)	7.47 (6.9%)	13.4 (12.3%)	9.96 (9.2%)	3.21 (3.0%)	38.45 (35.3%)
Chicago	130.16 (3.3%)	370.61 (9.4%)	800.49 (20.2%)	79.21 (2%)	284.81 (7.2%)	632.1 (16%)	582.13 (14.7%)	361.67 (9.1%)	179.7 (4.5%)	530.19 (13.4%)
Davenport-Rock Island-Moline	7.84 (4.4%)	21.67 (12.2%)	37.87 (21.3%)	3.01 (1.7%)	8.35 (4.7%)	20.37 (11.5%)	25.88 (14.6%)	18.09 (10.2%)	7.38 (4.2%)	26.99 (15.2%)
Decatur	3.23 (6.2%)	10.16 (19.7%)	10.81 (20.9%)	0.80 (1.5%)	2.04 (3.9%)	3.31 (6.4%)	8.14 (15.7%)	4.62 (8.9%)	2.67 (5.2%)	5.87 (11.4%)
Kankakee	1.36 (3.1%)	4.84 (11.1%)	10.44 (23.9%)	0.61 (1.4%)	1.82 (4.2%)	2.78 (6.4%)	8.74 (20%)	4.03 (9.2%)	1.75 (4.0%)	7.19 (16.5%)
Peoria	8.28 (4.8%)	24.35 (14%)	32.28 (18.6%)	2.45 (1.4%)	7.79 (4.5%)	20.72 (11.9%)	33.17 (19.1%)	16.31 (9.4%)	7.41 (4.3%)	21.35 (12.3%)
Rockford	5.20 (3.7%)	26.52 (18.6%)	27.13 (19.1%)	1.91 (1.3%)	5.93 (4.2%)	14.49 (10.2%)	23.12 (16.2%)	11.83 (8.3%)	9.23 (6.5%)	16.62 (11.7%)
Springfield	4.09 (3.7%)	3.25 (3.0%)	16.99 (15.4%)	2.23 (2.0%)	7.48 (6.8%)	10.77 (9.8%)	18.09 (16.4%)	9.98 (9.1%)	6.46 (5.9%)	30.65 (27.8%)
IL	193.41 (3.5%)	554.72 (9.9%)	1124.12 (20.2%)	103.89 (1.9%)	367.82 (6.6%)	772.94 (13.9%)	828.38 (14.9%)	507.01 (9.1%)	253.81 (4.6%)	853.48 (15.3%)

* The Illinois Department of Employment Security does not collect sector employment data for Metro-East

Total non-farm Employment growth rate Jan 1990 – Feb 2010



MSA DESCRIPTION: **Bloomington-Normal (B-N):** McLean Co. **Champaign-Urbana (C-U-R):** Champaign Co., Ford Co. & Piatt Co. **Chicago:** Cook Co. IL, DeKalb Co. IL, DuPage Co. IL, Grundy Co. IL, Kane Co. IL, Kendall Co. IL, Lake Co. IL, McHenry Co. IL, Will Co. IL & Kenosha Co. WI **Davenport-Moline-Rock Island (D-R-M):** Henry Co. IL, Mercer Co. IL, Rock Island Co. IL & Scott Co. IA **Decatur:** Macon Co. **Kankakee:** Kankakee Co. **Metro-East:** Bond Co., Calhoun Co., Clinton Co., Jersey Co., Macoupin Co., Madison Co., Monroe Co. & St. Clair Co. **Peoria-Pekin (Peoria):** Marshall Co., Peoria Co., Stark Co., Tazewell Co. & Woodford Co. **Rockford:** Boone Co. & Winnebago Co. **Springfield:** Menard Co. & Sangamon Co. The MSA data (unless noted) were seasonally adjusted to be consistent with state totals.

The Illinois Economic Observatory is part of the Institute of Government and Public Affairs at the University of Illinois.