

# Illinois Job Index:

## MSA Report

|                              |                                    |                       |                              |
|------------------------------|------------------------------------|-----------------------|------------------------------|
| Release<br><b>10/31/2011</b> | data<br><b>Jan 1990 / Sep 2011</b> | Issue<br><b>14.10</b> | <b>www.real.illinois.edu</b> |
|------------------------------|------------------------------------|-----------------------|------------------------------|

Note: IDES revised their estimates for the number of jobs at the beginning of 2011.

As a companion to the June 2011 Illinois Job Index that reports an positive rating, this MSA Report provides a localized picture on Illinois job growth and allows for comparisons between local economies, Illinois, the Nation and the Rest of the Midwest.

| October<br>2011 | Total non-farm employment  | Sep 2011<br>Number of<br>Jobs | Aug 2011 – Sep 2011   |                   | Last 12 months        |                   |
|-----------------|----------------------------|-------------------------------|-----------------------|-------------------|-----------------------|-------------------|
|                 |                            |                               | Growth<br>Rate<br>(%) | Number<br>of Jobs | Growth<br>Rate<br>(%) | Number<br>of Jobs |
|                 | Nation                     | 131,334,000                   | 0.08                  | 103,000           | 1.15                  | 1,490,000         |
|                 | Rest of Midwest (RMW)      | 18,701,500                    | -0.27                 | -50,100           | 0.97                  | 179,000           |
|                 | Illinois                   | 5,661,500                     | 0.03                  | 1,600             | 0.79                  | 44,400            |
|                 | Illinois Metro             | 5,160,600                     | 0.16                  | 8,300             | 0.73                  | 37,200            |
|                 | Illinois non-Metro (Rural) | 500,900                       | -1.33                 | -6,700            | 1.46                  | 7,200             |
|                 | Illinois Chicago (Upstate) | 4,012,600                     | 0.10                  | 4,000             | 0.63                  | 25,000            |
|                 | Illinois non-Chicago       | 1,648,900                     | -0.15                 | -2,400            | 1.19                  | 19,500            |

The monthly Illinois Job Index and MSA Report are provided as tools for elected officials, policy leaders and the public. Understanding the Illinois economy and business climate is enhanced by comparing and measuring Illinois employment growth rates against those of the Rest of the Midwest (RMW: Indiana, Iowa, Michigan, Missouri, Ohio and Wisconsin) and the Nation. Data and analysis are provided by the Illinois Economic Observatory / Regional Economics Applications Laboratory, University of Illinois. The MSA data (unless noted) were seasonally adjusted to be consistent with state totals.

### Talking Points

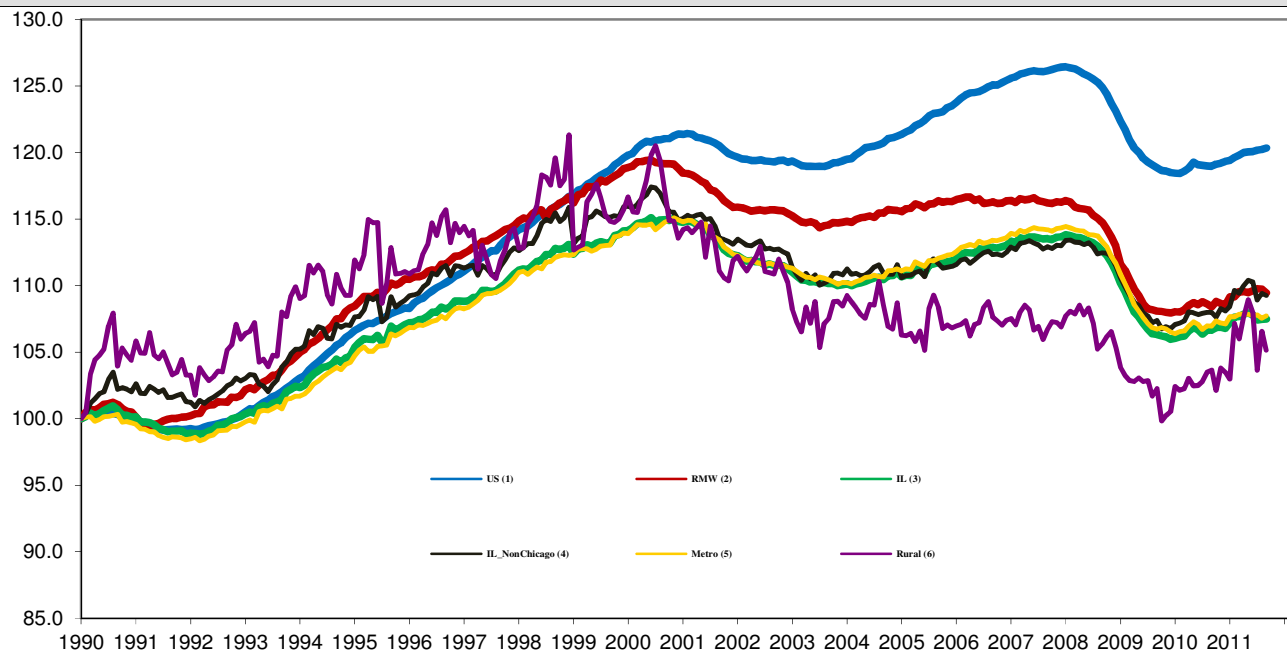
#### State, Downstate & Metro

- Illinois added 1,600 jobs in Sep 2011 at a rate of 0.03%, compared with a revised 2,900 job gain in Aug 2011. Compared to Sep 2010, Illinois has added 44,400 jobs. The three-month moving average of jobs, a more stable measure of labor market, was down by 5,400 jobs per month.
- Illinois has lost 323,700 jobs since the economic crisis developed in December 2007.
- Since January 2010 when Illinois employment resumed after the national recession, Illinois has added 81,000 new jobs.
- The major geographic divisions, Chicago-Downstate and Metro-Rural had mixed performance.
- Illinois Rural area lost 6,700 jobs at -1.33% this month, compared to a revised 14,000 job gains in Aug. At the same time, Metro added 8,300 jobs at 0.16% this month, compared to a revised 11,100 job losses in the previous month.
- Chicago added 4,000 jobs at 0.10% in Sep 2011, compared to a revised 4,800 job losses last month. On the other hand, Downstate shed 2,400 jobs at -0.15%, compared to a revised 7,700 job gains in Aug.
- In terms of the 12-month aggregated account, Metro registered a positive 0.73% growth by adding 37,200 jobs whereas Rural added 7,200 jobs at 1.46%. Chicago added 25,000 jobs at 0.63% whereas Downstate added 19,500 jobs at 1.19%.
- Through Sep 2011, the cumulative job growth for Metro, Rural, Chicago and Downstate compared to January 1990 stood at 7.73%, 5.16%, 6.79% and 9.26%, respectively.

#### MSA page (2-4)

- Illinois Metro added 8,300 jobs at 0.16% in Sep of 2011. Eight out of the ten MSAs posted positive growth in Sep.
- In terms of growth performance, six MSAs posted a net improvement from Aug to Sep, four declined in terms of rank.
- Metro-East dropped to the last place in terms of monthly growth performance, while Kankakee climbed up to the first place.
- Over the last 12-month period, Kankakee climbed up to the first place while Champaign-Urbana-Rantoul remained in the last place for the seventh consecutive months.

Total non-farm Employment growth Jan 1990 – Sep 2011



### Talking Points

#### State, Downstate & Metro

- While the average growth for Illinois between 1990 and 2008 was 0.04%, the average from December 2007 to Sep 2011 is -0.12%. It is worse than the performance during the 2000-2001 downturns which was -0.07%.
- Since the economic crisis in December 2007, the average growth for Metro is -0.13% while for Rural it is -0.03%. The same rate for Downstate is -0.07% while for Upstate it is -0.14%.
- Over the last 12-month period, the average growth rate for Metro was 0.06% and for Rural it was 0.14%.
- Illinois performed worse than the RMW and the nation in terms of yearly aggregate trend in 2009. In 2010, Illinois's performance was better than the RMW and compared favorably to the nation. So far in 2011, Illinois has performed less well than the nation and the RMW. From Jan to Sep 2011, the average growth rate for Illinois is 0.07% while for the RMW is 0.10% and for the nation is 0.09%.
- Downstate registered a 0.12% average growth rate in 2011 compared to an average gain of 0.10% growth in 2007, -0.17% decline in 2008, -0.32% decline in 2009 and 0.09% growth in 2010.

### By MSA

| Market Area                          | Sep 2011 Number of Jobs | Aug 2011 – Sep 2011         |               |                | Last 12 months |                |
|--------------------------------------|-------------------------|-----------------------------|---------------|----------------|----------------|----------------|
|                                      |                         | Growth compared to Illinois | Growth Rate % | Number Of Jobs | Growth Rate %  | Number of Jobs |
| Bloomington-Normal (B-N)             | 89,600                  | +                           | 0.46          | 400            | -0.48          | -400           |
| Champaign-Urbana (C-U-R)             | 105,400                 | +                           | 0.42          | 400            | -2.58          | -2,800         |
| Chicago                              | 4,012,700               | +                           | 0.10          | 4,000          | 0.63           | 25,000         |
| Davenport-Rock Island-Moline (D-R-M) | 182,200                 | +                           | 0.98          | 1,800          | 1.75           | 3,100          |
| Decatur                              | 52,600                  | +                           | 0.67          | 500            | 0.13           | 100            |
| Kankakee                             | 45,000                  | +                           | 2.54          | 1,100          | 6.38           | 2,700          |
| Peoria                               | 185,400                 | +                           | 0.45          | 800            | 3.86           | 6,900          |
| Rockford                             | 143,500                 | -                           | -0.13         | -200           | 0.70           | 1,000          |
| Springfield                          | 113,000                 | +                           | 0.79          | 900            | 0.73           | 1,000          |
| Metro-East                           | 231,300                 | -                           | -0.57         | -1,300         | 0.37           | 1,000          |
| <b>Illinois</b>                      |                         |                             | <b>0.03</b>   | <b>1,600</b>   | <b>0.79</b>    | <b>44,400</b>  |

# MSA League Tables\*: Non-farm Employment Growth Rate

## Monthly growth:

| Rank | Aug 2011                              | Sep 2011                            | Rank | Change** |
|------|---------------------------------------|-------------------------------------|------|----------|
| 1    | Springfield (0.64%)                   | Kankakee(2.54%)                     | 1    | ↑(+3)    |
| 2    | Metro-East (0.18%)                    | Davenport-Rock Island-Moline(0.98%) | 2    | ↑(+5)    |
| 3    | Chicago (-0.12%)                      | Springfield (0.79%)                 | 3    | ↓(-2)    |
| 4    | Kankakee (-0.24%)                     | Decatur (0.67%)                     | 4    | ↑(+2)    |
| 5    | Peoria (-0.35%)                       | Bloomington-Normal (0.46%)          | 5    | ↑(+4)    |
| 6    | Decatur (-0.59%)                      | Peoria (0.45%)                      | 6    | ↓(-1)    |
| 7    | Davenport-Rock Island-Moline (-0.66%) | Champaign-Urbana-Rantoul (0.42%)    | 7    | ↑(+1)    |
| 8    | Champaign-Urbana-Rantoul (-1.01%)     | Chicago (0.1%)                      | 8    | ↓(-5)    |
| 9    | Bloomington-Normal(-1.04%)            | Rockford (-0.13%)                   | 9    | ↑(+1)    |
| 10   | Rockford (-2.17%)                     | Metro-East (-0.57%)                 | 10   | ↓(-8)    |

## Growth over last 12-months:

| Rank | Aug 2011                             | Sep 2011                             | Rank | Change** |
|------|--------------------------------------|--------------------------------------|------|----------|
| 1    | Peoria (3.28%)                       | Kankakee (6.38%)                     | 1    | ↑(+1)    |
| 2    | Kankakee (2.81%)                     | Peoria (3.86%)                       | 2    | ↓(-1)    |
| 3    | Metro-East (1.23%)                   | Davenport-Rock Island-Moline (1.75%) | 3    | ↑(+1)    |
| 4    | Davenport-Rock Island-Moline (0.79%) | Springfield (0.73%)                  | 4    | ↑(+2)    |
| 5    | Chicago (0.51%)                      | Rockford (0.7%)                      | 5    | ↑(+2)    |
| 6    | Springfield (0.36%)                  | Chicago (0.63%)                      | 6    | ↓(-1)    |
| 7    | Rockford (-0.17%)                    | Metro-East (0.37%)                   | 7    | ↓(-4)    |
| 8    | Decatur (-0.61%)                     | Decatur (0.13%)                      | 8    | ↔(+0)    |
| 9    | Bloomington-Normal (-1.76%)          | Bloomington-Normal (-0.48%)          | 9    | ↔(+0)    |
| 10   | Champaign-Urbana-Rantoul (-2.3%)     | Champaign-Urbana-Rantoul (-2.58%)    | 10   | ↔(+0)    |

## Talking Points

### MSA League Tables

- Metro-East experienced the deepest fall this month (2<sup>nd</sup> to 10<sup>th</sup>).
- Springfield (1<sup>st</sup> to 3<sup>rd</sup>), Peoria (5<sup>th</sup> to 6<sup>th</sup>), Chicago (3<sup>rd</sup> to 8<sup>th</sup>) also dropped in terms of rank from last month.
- The most remarkable upward move in September was recorded for Davenport-Rock Island-Moline (7<sup>th</sup> to 2<sup>nd</sup>).
- Bloomington-Normal (9<sup>th</sup> to 5<sup>th</sup>), Kankakee (4<sup>th</sup> to 1<sup>st</sup>), Decatur (6<sup>th</sup> to 4<sup>th</sup>), Champaign-Urbana-Rantoul (8<sup>th</sup> to 7<sup>th</sup>) and Rockford (10<sup>th</sup> to 9<sup>th</sup>) also gained in terms of rank from last month.
- In the 12 months growth league table, upward moves were recorded for Kankakee (2<sup>nd</sup> to 1<sup>st</sup>) and Davenport-Rock Island-Moline (4<sup>th</sup> to 3<sup>rd</sup>), Springfield (6<sup>th</sup> to 4<sup>th</sup>), Rockford (7<sup>th</sup> to 5<sup>th</sup>) while downward moves were recorded for Peoria (1<sup>st</sup> to 2<sup>nd</sup>), Chicago (5<sup>th</sup> to 6<sup>th</sup>) and Metro-East (3<sup>rd</sup> to 7<sup>th</sup>).
- Decatur, Bloomington-Normal and Champaign-Urbana-Rantoul remained in the same place.
- Champaign-Urbana-Rantoul stayed in the last place for the seventh consecutive month.

\*MSA League Tables are based on revised employment data. For instances of equal growth rate for multiple MSAs ranks are decided based on change of growth rate from previous month.

\*\*Changes indicate change in rank position compared to previous month and correspond to the MSA at the right column. Rise is indicated by a '↑' and decline by a '↓' and for an unchanged position a '↔' is used. Figures in parenthesis indicate relative rank change from previous month.

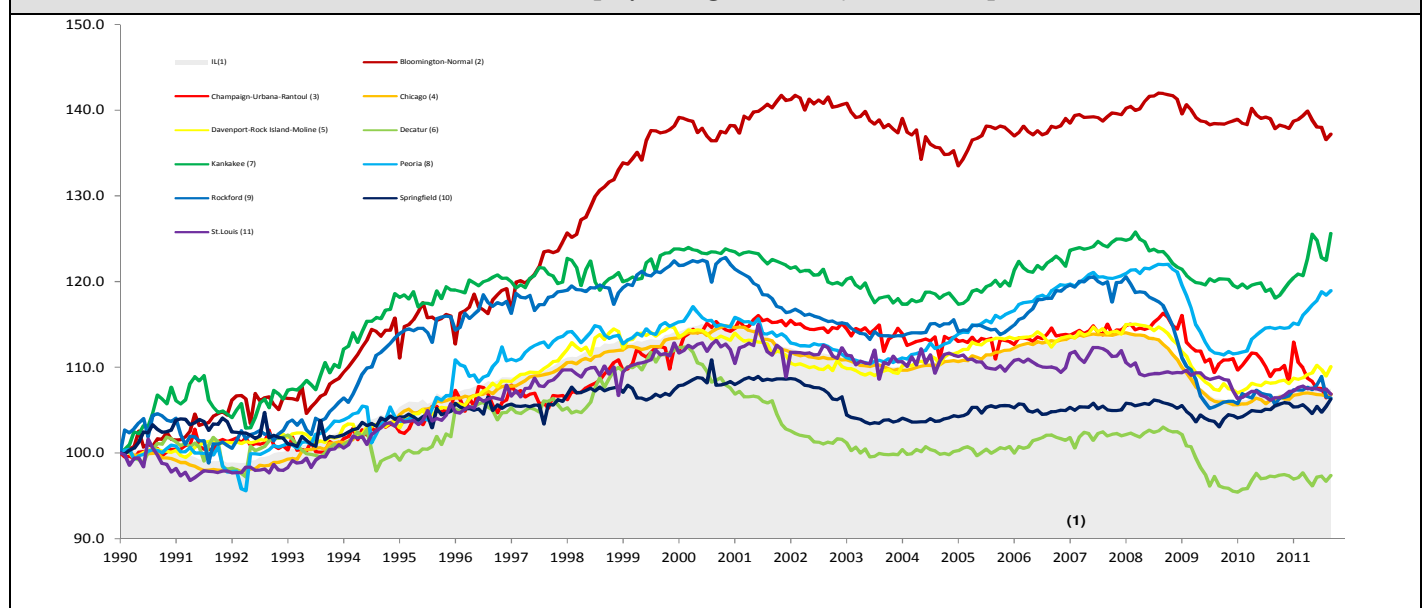
Shaded area on above chart represents Illinois growth.

**Sep 2011 MSA Employment by Sectors (000s) \***

| Market Area                  | Construction     | Manufacturing     | Trade, transportation & utilities | Information     | Financial activities | Professional & business services | Education & health | Leisure & hospitality | Other Services   | Government        |
|------------------------------|------------------|-------------------|-----------------------------------|-----------------|----------------------|----------------------------------|--------------------|-----------------------|------------------|-------------------|
| Bloomington-Normal           | 2.48<br>(2.8%)   | 4.01<br>(4.5%)    | 13.09<br>(14.6%)                  | 0.81<br>(0.9%)  | 11.76<br>(13.1%)     | 17.67<br>(19.7%)                 | 11.38<br>(12.7%)   | 9.77<br>(10.9%)       | 3.37<br>(3.8%)   | 15.22<br>(17%)    |
| Champaign-Urbana             | 3.41<br>(3.2%)   | 7.80<br>(7.4%)    | 17.05<br>(16.2%)                  | 2.86<br>(2.7%)  | 4.20<br>(4.0%)       | 7.55<br>(7.2%)                   | 12.6<br>(12%)      | 9.91<br>(9.4%)        | 3.08<br>(2.9%)   | 36.82<br>(34.9%)  |
| Chicago                      | 139.41<br>(3.5%) | 373.85<br>(9.3%)  | 814.81<br>(20.3%)                 | 73.04<br>(1.8%) | 274.84<br>(6.8%)     | 672.88<br>(16.8%)                | 593.26<br>(14.8%)  | 365.27<br>(9.1%)      | 179.53<br>(4.5%) | 523.89<br>(13.1%) |
| Davenport-Rock Island-Moline | 9.27<br>(5.1%)   | 24.17<br>(13.3%)  | 36.87<br>(20.2%)                  | 2.62<br>(1.4%)  | 8.28<br>(4.5%)       | 21.95<br>(12%)                   | 25.7<br>(14.1%)    | 18.26<br>(10%)        | 7.36<br>(4.0%)   | 27.67<br>(15.2%)  |
| Decatur                      | 3.61<br>(6.9%)   | 10.74<br>(20.4%)  | 10.79<br>(20.5%)                  | 0.69<br>(1.3%)  | 1.97<br>(3.7%)       | 3.58<br>(6.8%)                   | 7.83<br>(14.9%)    | 4.84<br>(9.2%)        | 2.50<br>(4.8%)   | 6.25<br>(11.9%)   |
| Kankakee                     | 1.36<br>(3.0%)   | 4.73<br>(10.5%)   | 10.81<br>(24%)                    | 0.49<br>(1.1%)  | 1.90<br>(4.2%)       | 3.17<br>(7.0%)                   | 9.18<br>(20.4%)    | 4.14<br>(9.2%)        | 1.91<br>(4.2%)   | 7.38<br>(16.4%)   |
| Peoria                       | 8.29<br>(4.5%)   | 29.45<br>(15.9%)  | 33.78<br>(18.2%)                  | 2.39<br>(1.3%)  | 7.98<br>(4.3%)       | 23.95<br>(12.9%)                 | 33.07<br>(17.8%)   | 16.82<br>(9.1%)       | 7.99<br>(4.3%)   | 21.84<br>(11.8%)  |
| Rockford                     | 5.13<br>(3.6%)   | 27.19<br>(19%)    | 27.49<br>(19.2%)                  | 1.84<br>(1.3%)  | 5.77<br>(4.0%)       | 14.88<br>(10.4%)                 | 22.87<br>(15.9%)   | 12.50<br>(8.7%)       | 8.99<br>(6.3%)   | 16.98<br>(11.8%)  |
| Springfield                  | 4.48<br>(4.0%)   | 3.08<br>(2.7%)    | 17.48<br>(15.5%)                  | 2.25<br>(2.0%)  | 7.38<br>(6.5%)       | 11.63<br>(10.3%)                 | 18.84<br>(16.7%)   | 10.67<br>(9.4%)       | 6.95<br>(6.2%)   | 30.61<br>(27.1%)  |
| IL                           | 203.02<br>(3.6%) | 570.20<br>(10.1%) | 1137.22<br>(20.1%)                | 96.40<br>(1.7%) | 354.24<br>(6.3%)     | 823.17<br>(14.5%)                | 850.74<br>(15.0%)  | 518.81<br>(9.2%)      | 255.36<br>(4.5%) | 842.41<br>(14.9%) |

\* The Illinois Department of Employment Security does not collect sector employment data for Metro-East

**Total non-farm Employment growth rate Jan 1990 – Sep 2011**



MSA DESCRIPTION: **Bloomington-Normal (B-N):** McLean Co. **Champaign-Urbana (C-U-R):** Champaign Co., Ford Co. & Piatt Co. **Chicago:** Cook Co. IL, DeKalb Co. IL, DuPage Co. IL, Grundy Co. IL, Kane Co. IL, Kendall Co. IL, Lake Co. IL, McHenry Co. IL, Will Co. IL & Kenosha Co. WI **Davenport-Moline-Rock Island (D-R-M):** Henry Co. IL, Mercer Co. IL, Rock Island Co. IL & Scott Co. IA **Decatur:** Macon Co. **Kankakee:** Kankakee Co. **Metro-East:** Bond Co., Calhoun Co., Clinton Co., Jersey Co., Macoupin Co., Madison Co., Monroe Co. & St. Clair Co. **Peoria-Pekin (Peoria):** Marshall Co., Peoria Co., Stark Co., Tazewell Co. & Woodford Co. **Rockford:** Boone Co. & Winnebago Co. **Springfield:** Menard Co. & Sangamon Co. The MSA data (unless noted) were seasonally adjusted to be consistent with state totals.

The Illinois Economic Observatory and Illinois Jobs Index is part of the Institute of Government and Public Affairs at the University of Illinois.