

Illinois Job Index:

MSA Report

Release 10/03/2011	data Jan 1990 / Aug 2011	Issue 14.09	www.real.illinois.edu
------------------------------	------------------------------------	-----------------------	------------------------------

Note: IDES revised their estimates for the number of jobs at the beginning of 2011.

As a companion to the June 2011 Illinois Job Index that reports an positive rating, this MSA Report provides a localized picture on Illinois job growth and allows for comparisons between local economies, Illinois, the Nation and the Rest of the Midwest.

September 2011	Total non-farm employment	Aug 2011 Number of Jobs	Jul 2011 – Aug 2011		Last 12 months	
			Growth Rate (%)	Number of Jobs	Growth Rate (%)	Number of Jobs
	Nation	131,132,000	0.00	0	0.97	1,259,000
	Rest of Midwest (RMW)	18,737,400	-0.09	-16,700	0.97	179,200
	Illinois	5,660,100	0.05	3,100	0.75	42,400
	Illinois Metro	5,151,500	-0.22	-11,300	0.56	28,600
	Illinois non-Metro (Rural)	508,600	2.91	14,400	2.79	13,800
	Illinois Chicago (Upstate)	4,006,200	-0.16	-6,600	0.49	19,400
	Illinois non-Chicago	1,653,900	0.59	9,600	1.41	23,000

The monthly Illinois Job Index and MSA Report are provided as tools for elected officials, policy leaders and the public. Understanding the Illinois economy and business climate is enhanced by comparing and measuring Illinois employment growth rates against those of the Rest of the Midwest (RMW: Indiana, Iowa, Michigan, Missouri, Ohio and Wisconsin) and the Nation. Data and analysis are provided by the Illinois Economic Observatory / Regional Economics Applications Laboratory, University of Illinois. The MSA data (unless noted) were seasonally adjusted to be consistent with state totals.

Talking Points

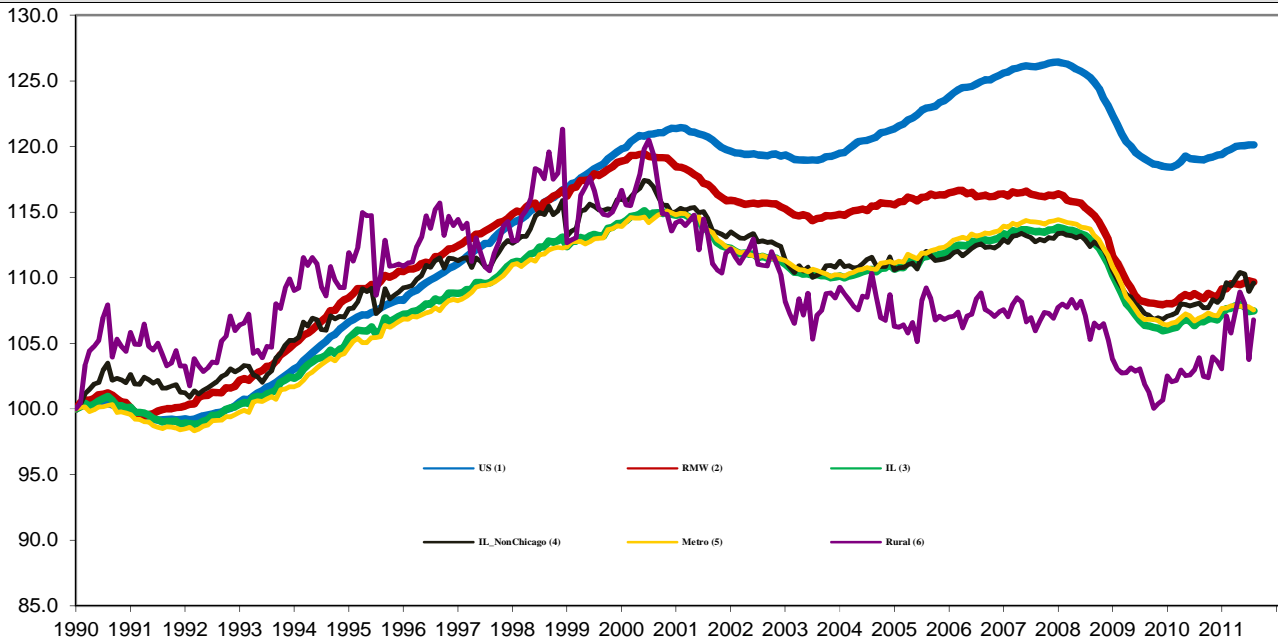
State, Downstate & Metro

- Illinois added 3,100 jobs in Aug 2011 at a rate of 0.05%, compared with a revised 20,600 job loss in July 2011. Compared to Aug 2010, Illinois has added 42,400 jobs. The three-month moving average of jobs, a more stable measure of labor market, was down by 8,300 jobs per month.
- Illinois has lost 325,100 jobs since the economic crisis developed in December 2007.
- Since January 2010 when Illinois employment resumed after the national recession, Illinois has added 79,600 new jobs.
- The major geographic divisions, Chicago-Downstate and Metro-Rural had mixed performance.
- Illinois Rural area added 14,400 jobs at 2.91% this month, compared to a revised 20,100 job losses in July. At the same time, Metro shed 11,300 jobs at -0.22% this month, compared to a revised 500 job losses in the previous month.
- Chicago shed 6,600 jobs at -0.16% in Aug 2011, compared to a revised 600 job losses last month. On the other hand, Downstate added 9,600 jobs at 0.59%, compared to a revised 20,000 job losses in July.
- In terms of the 12-month aggregated account, Metro registered a positive 0.56% growth by adding 28,600 jobs whereas Rural added 13,800 jobs at 2.79%. Chicago added 19,400 jobs at 0.49% whereas Downstate added 23,000 jobs at 1.41%.
- Through Aug 2011, the cumulative job growth for Metro, Rural, Chicago and Downstate compared to January 1990 stood at 7.54%, 6.79 %, 6.61% and 9.59%, respectively.

MSA page (2-4)

- Illinois Metro shed 11,300 jobs at -0.22% in Aug of 2011. Three out of the ten MSAs posted positive growth in Aug.
- In terms of growth performance, four MSAs posted a net improvement from Jul to Aug, five declined in terms of rank.
- Champaign-Urbana-Rantoul dropped to the last place in terms of monthly growth performance, while Springfield climbed up to the first place.
- Over the last 12-month period, Peoria stayed in the first place while Champaign-Urbana-Rantoul remained in the last place for the sixth consecutive months.

Total non-farm Employment growth Jan 1990 –Aug 2011



Talking Points

State, Downstate & Metro

- While the average growth for Illinois between 1990 and 2008 was 0.04%, the average from December 2007 to Aug 2011 is -0.12%. It is worse than the performance during the 2000-2001 downturns which was -0.07%.
- Since the economic crisis in December 2007, the average growth for Metro is -0.13% while for Rural it is 0%. The same rate for Downstate is -0.07% while for Upstate it is -0.15%.
- Over the last 12-month period, the average growth rate for Metro was 0.05% and for Rural it was 0.25%.
- Illinois performed worse than the RMW and the nation in terms of yearly aggregate trend in 2009. In 2010, Illinois's performance was better than the RMW and compared favorably to the nation. So far in 2011, Illinois has performed less well than the nation and as well as the RMW. From Jan to Aug 2011, the average growth rate for Illinois is 0.08% while for the RMW is 0.13% and for the nation is 0.08%.
- Downstate registered a 0.17% average growth rate in 2011 compared to an average gain of 0.10% growth in 2007, -0.17% decline in 2008, -0.32% decline in 2009 and 0.09% growth in 2010.

By MSA

Market Area	Jul 2011 Number of Jobs	Jul 2011 – Aug 2011			Last 12 months	
		Growth compared to Illinois	Growth Rate %	Number Of Jobs	Growth Rate %	Number of Jobs
Bloomington-Normal (B-N)	89,400	-	-0.71	-600	-1.38	-1,300
Champaign-Urbana (C-U-R)	104,800	-	-1.14	-1,200	-2.13	-2,300
Chicago	4,006,200	-	-0.16	-6,500	0.49	19,400
Davenport-Rock Island-Moline (D-R-M)	180,000	-	-0.89	-1,600	0.52	900
Decatur	52,100	-	-0.74	-400	-0.72	-400
Kankakee	44,100	+	0.20	100	3.28	1,400
Peoria	184,900	-	-0.19	-400	3.51	6,300
Rockford	145,500	-	-0.90	-1,300	1.14	1,600
Springfield	111,700	+	0.25	300	-0.01	-10
Metro-East	232,700	+	0.19	400	1.24	2,900
Illinois			0.05	3,100	0.75	42,400

MSA League Tables*: Non-farm Employment Growth Rate

Monthly growth:

Rank	Jul 2011	Aug 2011	Rank	Change**
1	Rockford (0.87%)	Springfield (0.25%)	1	↑(+7)
2	Peoria (0.85%)	Kankakee(0.2%)	2	↑(+8)
3	Decatur (0.11%)	Metro-East (0.19%)	3	↑(+4)
4	Chicago (-0.01%)	Chicago (-0.16%)	4	↔(+0)
5	Bloomington-Normal (-0.06%)	Peoria (-0.19%)	5	↓(-3)
6	Champaign-Urbana-Rantoul (-0.07%)	Bloomington-Normal (-0.71%)	6	↓(-1)
7	Metro-East (-0.17%)	Decatur (-0.74%)	7	↓(-4)
8	Springfield (-0.49%)	Davenport-Rock Island-Moline (-0.89%)	8	↑(+1)
9	Davenport-Rock Island-Moline(-0.53%)	Rockford (-0.9%)	9	↓(-8)
10	Kankakee (-1.64%)	Champaign-Urbana-Rantoul (-1.14%)	10	↓(-4)

Growth over last 12-months:

Rank	Jul 2011	Aug 2011	Rank	Change**
1	Peoria (3.69%)	Peoria (3.51%)	1	↔(+0)
2	Kankakee (3.3%)	Kankakee (3.28%)	2	↔(+0)
3	Rockford (1.95%)	Metro-East (1.24%)	3	↑(+3)
4	Davenport-Rock Island-Moline (1.35%)	Rockford (1.14%)	4	↓(-1)
5	Chicago (1.02%)	Davenport-Rock Island-Moline (0.52%)	5	↓(-1)
6	Metro-East (0.71%)	Chicago (0.49%)	6	↓(-1)
7	Decatur (0.24%)	Springfield (-0.01%)	7	↑(+1)
8	Springfield (-0.31%)	Decatur (-0.72%)	8	↓(-1)
9	Bloomington-Normal (-0.86%)	Bloomington-Normal (-1.38%)	9	↔(+0)
10	Champaign-Urbana-Rantoul (-2.31%)	Champaign-Urbana-Rantoul (-2.13%)	10	↔(+0)

Talking Points

MSA League Tables

- Rockford experienced the deepest fall this month (1st to 9th).
- Peoria (2nd to 5th), Decatur (3rd to 7th), Bloomington-Normal (5th to 6th) and Champaign-Urbana-Rantoul (6th to 10th) also dropped in terms of rank from last month.
- The most remarkable upward move in August was recorded for Kankakee (10th to 2nd).
- Springfield (8th to 1st), Metro-East (7th to 3rd) and Davenport-Rock Island-Moline (9th to 8th) also gained in terms of rank from last month.
- In the 12 months growth league table, upward moves were recorded for Metro-East (6th to 3rd) and Springfield (8th to 7th) while downward moves were recorded for Rockford (3rd to 4th), Davenport-Rock Island-Moline (4th to 5th) and Decatur (7th to 8th).
- Peoria, Kankakee and Bloomington-Normal remained in the same place.
- Champaign-Urbana-Rantoul stayed in the last place for the sixth consecutive month.

*MSA League Tables are based on revised employment data. For instances of equal growth rate for multiple MSAs ranks are decided based on change of growth rate from previous month.

**Changes indicate change in rank position compared to previous month and correspond to the MSA at the right column. Rise is indicated by a '↑' and decline by a '↓' and for an unchanged position a '↔' is used. Figures in parenthesis indicate relative rank change from previous month.

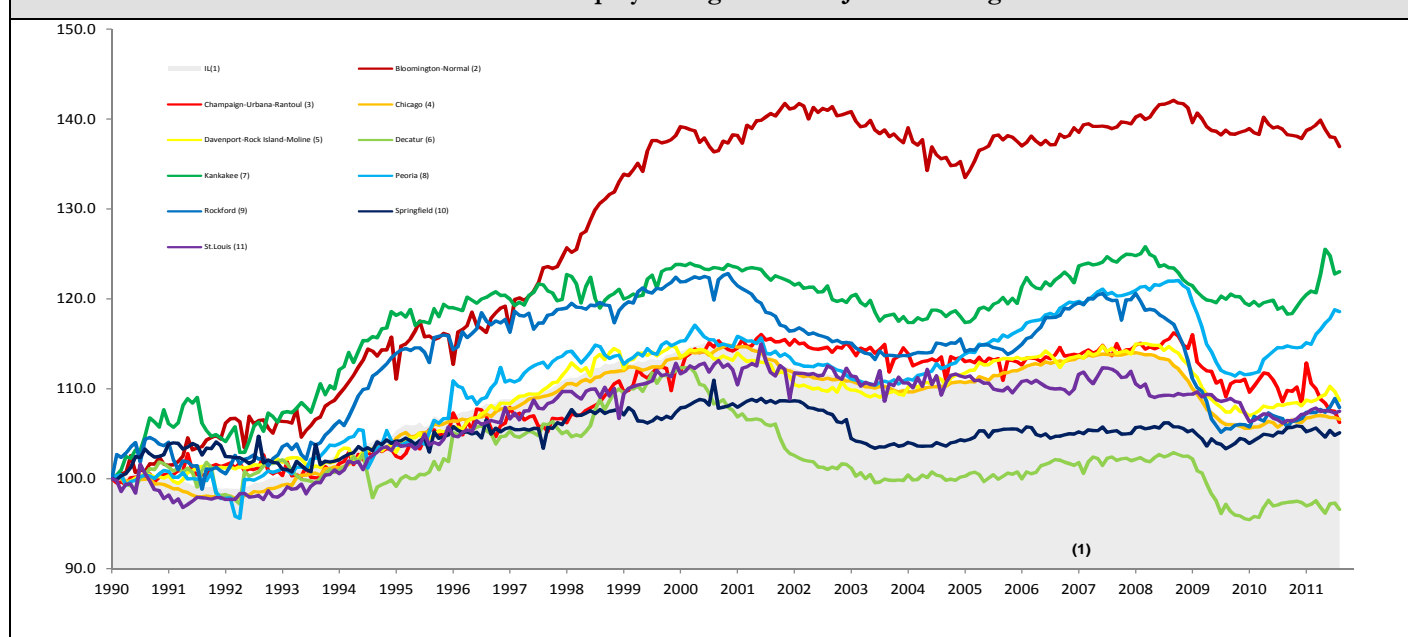
Shaded area on above chart represents Illinois growth.

Aug 2011 MSA Employment by Sectors (000s) *

Market Area	Construction	Manufacturing	Trade, transportation & utilities	Information	Financial activities	Professional & business services	Education & health	Leisure & hospitality	Other Services	Government
Bloomington-Normal	2.50 (2.8%)	4.04 (4.5%)	13.26 (14.8%)	0.80 (0.9%)	11.70 (13.1%)	17.55 (19.6%)	11.34 (12.7%)	9.68 (10.8%)	3.29 (3.7%)	15.27 (17.1%)
Champaign-Urbana	3.40 (3.2%)	7.79 (7.4%)	17.45 (16.6%)	2.77 (2.6%)	4.29 (4.1%)	7.56 (7.2%)	12.82 (12.2%)	10.08 (9.6%)	3.16 (3.0%)	36.05 (34.4%)
Chicago	141.67 (3.5%)	376.19 (9.4%)	812.14 (20.3%)	73.61 (1.8%)	277.41 (6.9%)	668.70 (16.7%)	591.23 (14.8%)	366.8 (9.2%)	176.37 (4.4%)	520.13 (13%)
Davenport-Rock Island-Moline	0.92 (3.2%)	4.98 (17.2%)	6.47 (22.3%)	0.30 (1.0%)	1.30 (4.5%)	2.12 (7.3%)	3.09 (10.7%)	2.19 (7.6%)	1.24 (4.3%)	6.36 (21.9%)
Decatur	9.12 (5.1%)	23.66 (13.1%)	36.7 (20.4%)	2.72 (1.5%)	8.21 (4.6%)	21.22 (11.8%)	25.51 (14.2%)	18.75 (10.4%)	7.28 (4.0%)	26.83 (14.9%)
Kankakee	3.59 (6.9%)	10.78 (20.7%)	10.51 (20.2%)	0.70 (1.3%)	1.97 (3.8%)	3.61 (6.9%)	7.72 (14.8%)	4.83 (9.3%)	2.35 (4.5%)	5.86 (11.2%)
Peoria	1.35 (3.1%)	4.75 (10.8%)	10.65 (24.2%)	0.49 (1.1%)	1.89 (4.3%)	3.04 (6.9%)	8.98 (20.4%)	4.17 (9.4%)	1.82 (4.1%)	7.07 (16%)
Rockford	8.32 (4.5%)	29.5 (16%)	33.76 (18.3%)	2.46 (1.3%)	8.03 (4.3%)	23.92 (12.9%)	32.52 (17.6%)	16.77 (9.1%)	7.93 (4.3%)	21.53 (11.6%)
Springfield	5.21 (3.6%)	27.22 (18.7%)	28.17 (19.4%)	1.92 (1.3%)	5.74 (3.9%)	15.09 (10.4%)	23.12 (15.9%)	12.7 (8.7%)	9.01 (6.2%)	17.21 (11.8%)
IL	206.43 (3.6%)	572.88 (10.1%)	1136.97 (20.1%)	97.38 (1.7%)	356.88 (6.3%)	817.86 (14.5%)	845.08 (14.9%)	521.85 (9.2%)	251.39 (4.4%)	842.91 (14.9%)

* The Illinois Department of Employment Security does not collect sector employment data for Metro-East

Total non-farm Employment growth rate Jan 1990 –Aug 2011



MSA DESCRIPTION: **Bloomington-Normal (B-N):** McLean Co. **Champaign-Urbana (C-U-R):** Champaign Co., Ford Co. & Piatt Co. **Chicago:** Cook Co. IL, DeKalb Co. IL, DuPage Co. IL, Grundy Co. IL, Kane Co. IL, Kendall Co. IL, Lake Co. IL, McHenry Co. IL, Will Co. IL & Kenosha Co. WI **Davenport-Moline-Rock Island (D-R-M):** Henry Co. IL, Mercer Co. IL, Rock Island Co. IL & Scott Co. IA **Decatur:** Macon Co. **Kankakee:** Kankakee Co. **Metro-East:** Bond Co., Calhoun Co., Clinton Co., Jersey Co., Macoupin Co., Madison Co., Monroe Co. & St. Clair Co. **Peoria-Pekin (Peoria):** Marshall Co., Peoria Co., Stark Co., Tazewell Co. & Woodford Co. **Rockford:** Boone Co. & Winnebago Co. **Springfield:** Menard Co. & Sangamon Co. The MSA data (unless noted) were seasonally adjusted to be consistent with state totals.

The Illinois Economic Observatory and Illinois Jobs Index is part of the Institute of Government and Public Affairs at the University of Illinois.