

# Illinois Job Index:

## MSA Report

Release <b>Sep 29/2015</b>	data <b>Jan 1990 / August 2015</b>	Issue <b>15.9</b>	<b>www.real.illinois.edu</b>
-------------------------------	---------------------------------------	----------------------	------------------------------

Note: IDES revised their estimates for the number of jobs at the beginning of 2015.

As a companion to the Sep 2014 Illinois Job Index that reports a positive rating, this MSA Report provides a localized picture on Illinois job growth and allows for comparisons between local economies, Illinois, the Nation and the Rest of the Midwest.

Sep 2015	Total non-farm employment	August 2015 Number of Jobs	July 2015 – August 2015		Last 12 months	
			Growth Rate (%)	Number of Jobs	Growth Rate (%)	Number of Jobs
	<b>Nation</b>	142,288,000	0.12	173,000	2.09	2,919,000
	<b>Rest of Midwest (RMW)</b>	19,994,100	0.15	29,800	1.68	330,000
	<b>Illinois</b>	5,920,400	-0.02	-900	0.70	41,200
	<b>Illinois Metro</b>	5,169,800	-0.34	-17,600	0.65	33,600
	<b>Illinois non-Metro (Rural)</b>	750,600	2.27	16,700	1.02	7,600
	<b>Illinois Chicago (Upstate)</b>	4,023,100	-0.36	-14,500	0.94	37,300
	<b>Illinois non-Chicago</b>	1,897,300	0.72	13,600	0.20	3,900

The monthly Illinois Job Index and MSA Report are provided as tools for elected officials, policy leaders and the public. Understanding the Illinois economy and business climate is enhanced by comparing and measuring Illinois employment growth rates against those of the Rest of the Midwest (RMW: Indiana, Iowa, Michigan, Missouri, Ohio and Wisconsin) and the Nation. Data and analysis are provided by the Illinois Economic Observatory / Regional Economics Applications Laboratory, University of Illinois. The MSA data (unless noted) were seasonally adjusted to be consistent with state totals.

### Talking Points

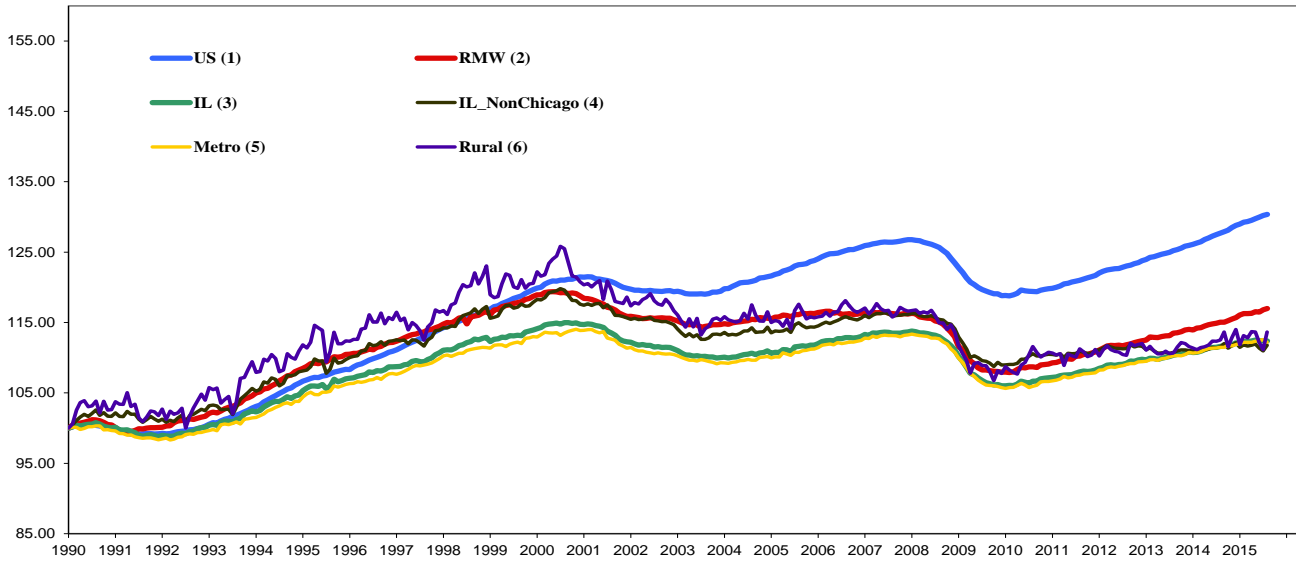
#### State, Downstate & Metro

- Illinois lost 900 jobs in August 2015, compared with an 800 job loss in July 2015. Compared to August 2014, Illinois has added 41,200 jobs. The three-month moving average, a more stable measure of labor market, showed a decrease of 2,400 jobs per month.
- Illinois has a net loss of 67,500 jobs since the economic crisis developed in December 2007.
- Since January 2010 when Illinois employment resumed after the national recession, Illinois has added 335,500 new jobs.
- Chicago-Downstate and Metro-Rural had mixed performances.
- Illinois Rural area added 16,700 jobs at 2.27% this month, compared to a revised 6,500 job loss in July 2015. At the same time, Metro lost 17,600 jobs at -0.34% in August, compared to a revised 5,700 job gain in the previous month.
- Chicago lost 14,500 jobs at -0.36% in August 2015, compared to a revised 5,900 job gain last month. Meanwhile, Downstate added 13,600 jobs at 0.72%, compared to a revised 6,700 job loss last month.
- In terms of the 12-month aggregated account, Metro registered a positive 0.65 % growth by adding 33,600 jobs whereas Rural added 7,600 jobs at 1.02%. Chicago added 37,300 jobs at 0.94% whereas Downstate added 3,900 jobs at 0.20%.
- Through August 2015, the cumulative job growth for Metro, Rural, Chicago and Downstate compared to January 1990 stood at 12.19%, 13.66%, 12.67% and 11.76% respectively.

#### MSA page (2-4)

- Illinois Metro lost 17,600 jobs at -0.34% in August 2015. Four out of ten MSAs posted positive growth.
- Since the job recovery resumed in January 2010 in Illinois, Chicago Upstate has shown an average growth rate of 10.94%, which is the highest among all the IL MSAs; Decatur has experienced the lowest average growth rate, -2.72%.
- In terms of growth performance, five MSAs posted net improvements from July to August, three declined in terms of rank.
- Kankakee remained in the last place in terms of monthly growth performance, while Decatur remained in the first place.
- In the 12 months growth league table, Davenport-Rock Island-Moline remained in the last place while Champaign-Urbana-Rantoul remained in the first place.

## Total non-farm Employment growth Jan 1990 – August 2015



## Talking Points

### State, Downstate & Metro

- While the average growth for Illinois between 1990 and 2008 was 0.04%, the average from December 2007 to August 2015 was -0.01%. This is better than the performance during the 2000-2001 downturns which saw a decline of -0.09%.
- Since the economic crisis in December 2007, the average growth for Metro is -0.01% while for Rural it is -0.02%. The same rate for Chicago (Upstate) is 0.00% and for Downstate it is -0.04%.
- Over the last 12-month period, the average growth rate for Metro was 0.05% and for Rural it was 0.09%.
- Downstate registered a -0.04% average job loss in 2015 compared to an average gain of 0.04% in 2007, -0.11% decline in 2008, -0.35% decline in 2009, 0.13% growth in 2010, 0.01% growth in 2011, 0.11% growth in 2012, -0.03% decline in 2013 and 0.08% job growth in 2014.

### Average Growth Rates for Illinois, RMW and the Nation

	2011(%)	2012(%)	2013(%)	2014(%)	2015(%)
Illinois	0.08	0.12	0.07	0.09	0.03
RMW	0.13	0.12	0.12	0.12	0.14
Nation	0.13	0.14	0.14	0.19	0.15

### By MSA

Market Area	August 2015 Number of Jobs	July 2015 – August 2015			Last 12 months	
		Growth compared to Illinois	Growth Rate %	Number Of Jobs	Growth Rate %	Number of Jobs
Bloomington-Normal (B-N)	95,200	+	0.02	15	0.48	500
Champaign-Urbana (C-U-R)	108,400	-	-0.31	-300	1.33	1,400
Chicago	4,023,100	-	-0.36	-14,500	0.94	37,300
Davenport-Rock Island-Moline (D-R-M)	180,000	-	-0.34	-600	-2.25	-4,100
Decatur	50,700	+	0.29	100	-0.21	-100
Kankakee	44,000	-	-2.03	-900	-1.56	-700
Peoria	176,200	-	-0.75	-1,300	-1.46	-2,600
Rockford	151,200	+	0.06	100	0.76	1,100
Springfield	111,300	-	-0.30	-300	-0.54	-600
Metro-East	229,600	+	0.11	300	0.63	1,400
<b>Illinois</b>			<b>-0.02</b>	<b>-900</b>	<b>0.70</b>	<b>41,200</b>

# MSA League Tables\*: Non-farm Employment Growth Rate

## Monthly growth:

Rank	July 2015	August 2015	Rank	Change**
1	Decatur(0.42%)	Decatur(0.29%)	1	◀(+0)
2	Champaign-Urbana-Rantoul(0.22%)	Metro-East(0.11%)	2	▲(+4)
3	Peoria(0.22%)	Rockford (0.06%)	3	▲(+5)
4	Chicago(0.19%)	Bloomington-Normal(0.02%)	4	▲(+1)
5	Bloomington-Normal(0.16%)	Springfield (-0.3%)	5	▲(+2)
6	Metro-East(-0.11%)	Champaign-Urbana-Rantoul(-0.31%)	6	▼(-4)
7	Springfield (-0.2%)	Davenport-Rock Island-Moline(-0.34%)	7	▲(+2)
8	Rockford (-0.22%)	Chicago(-0.36%)	8	▼(-4)
9	Davenport-Rock Island-Moline(-0.51%)	Peoria(-0.75%)	9	▼(-6)
10	Kankakee(-0.98%)	Kankakee(-2.03%)	10	◀(+0)

## Growth over last 12-months:

Rank	July 2015	August 2015	Rank	Change**
1	Champaign-Urbana-Rantoul (1.98%)	Champaign-Urbana-Rantoul (1.33%)	1	◀(+0)
2	Chicago (1.46%)	Chicago (0.94%)	2	◀(+0)
3	Rockford (0.82%)	Rockford (0.76%)	3	◀(+0)
4	Kankakee (0.75%)	Metro-East (0.63%)	4	▲(+1)
5	Metro-East (0.59%)	Bloomington-Normal (0.48%)	5	▲(+1)
6	Bloomington-Normal (0.52%)	Decatur (-0.21%)	6	▲(+2)
7	Springfield (0.01%)	Springfield (-0.54%)	7	◀(+0)
8	Decatur (-0.77%)	Peoria (-1.46%)	8	▲(+1)
9	Peoria (-1.06%)	Kankakee (-1.56%)	9	▼(-5)
10	Davenport-Rock Island-Moline (-1.93%)	Davenport-Rock Island-Moline (-2.25%)	10	◀(+0)

## Talking Points

### MSA League Tables

- Peoria (3rd to 9th) experienced the deepest fall in August 2015.
- Champaign-Urbana-Rantoul (2nd to 6th) and Chicago (4th to 8th) also dropped in terms of rank from last month.
- The most remarkable upward move in August was recorded for Rockford (8th to 3rd).
- In the 12-month growth league table, upward moves were recorded for Metro-East (5th to 4th), Bloomington-Normal (6th to 5th), Decatur (8th to 6th) and Peoria (9th to 8th).
- Downward move was recorded for Kankakee (4th to 9th).
- In the 12 months growth league table, Davenport-Rock Island-Moline remained in the last place while Champaign-Urbana-Rantoul remained in the first place.

\*MSA League Tables are based on revised employment data. For instances of equal growth rate for multiple MSAs ranks are decided based on change of growth rate from previous month.

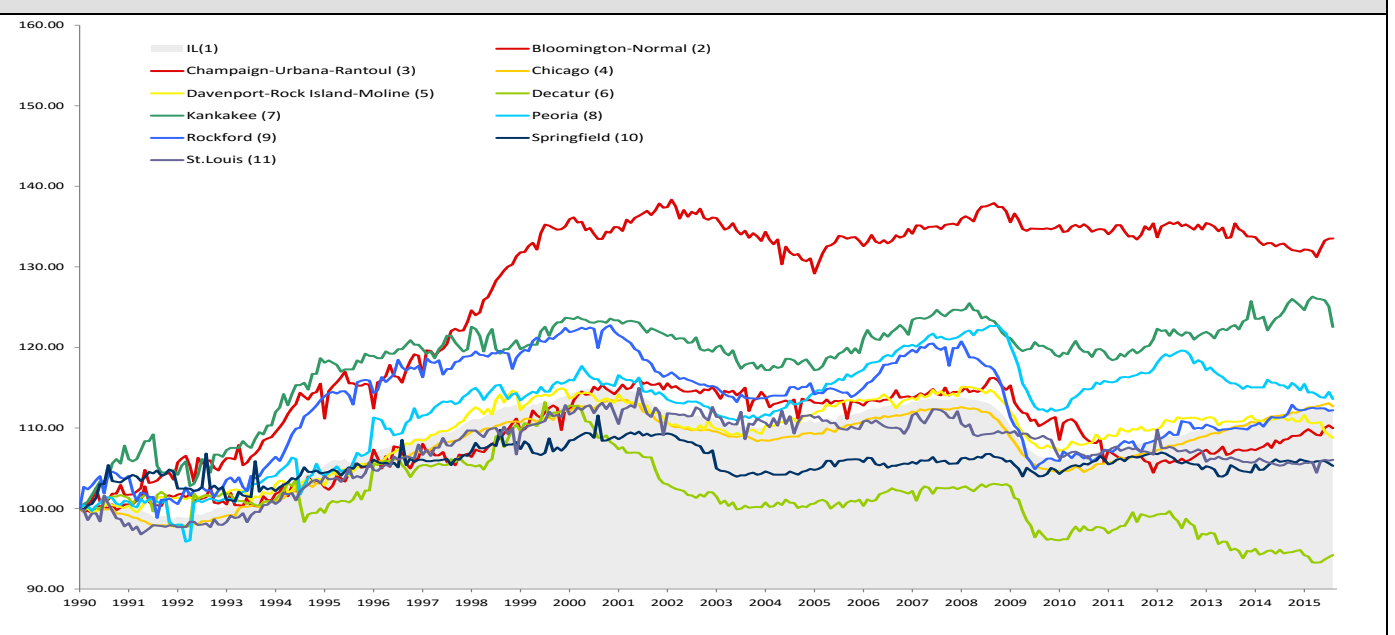
\*\*Changes indicate change in rank position compared to previous month and correspond to the MSA at the right column. Rise is indicated by a '▲' and decline by a '▼' and for an unchanged position a '◀' is used. Figures in parenthesis indicate relative rank change from previous month

### August 2015 MSA Employment by Sectors (000s) \*

Market Area	Construction (CON)	Manufacturing (MAN)	Trade, transportation & utilities (TTU)	Information (INF)	Financial activities (FIN)	Professional & business services (PRO)	Education & health (EDU)	Leisure & hospitality (LEI)	Other Services (OTH)	Government (GOV)
Bloomington-Normal	2.34 (2.5%)	4.77 (5%)	16.11 (16.9%)	0.71 (0.7%)	11.91 (12.5%)	17.6 (18.5%)	10.8 (11.3%)	11.43 (12%)	3.78 (4%)	15.64 (16.4%)
Champaign-Urbana	3.21 (3%)	7.91 (7.3%)	16.39 (15.1%)	2.46 (2.3%)	4.32 (4%)	8.34 (7.7%)	14.84 (13.7%)	11.93 (11%)	3.32 (3.1%)	35.64 (32.9%)
Chicago	135.05 (3.4%)	334.75 (8.3%)	816.77 (20.3%)	73.76 (1.8%)	268.72 (6.7%)	747.02 (18.6%)	616.81 (15.3%)	383.4 (9.5%)	172.11 (4.3%)	474.79 (11.8%)
Davenport-Rock Island-Moline	8.75 (4.9%)	23.57 (13.1%)	39.86 (22.1%)	2.29 (1.3%)	7.99 (4.4%)	21.74 (12.1%)	24.14 (13.4%)	18.71 (10.4%)	7.16 (4%)	25.58 (14.2%)
Decatur	3.35 (6.6%)	10.04 (19.8%)	10.56 (20.8%)	0.6 (1.2%)	1.89 (3.7%)	3.35 (6.6%)	8.3 (16.4%)	4.81 (9.5%)	2.28 (4.5%)	5.46 (10.8%)
Kankakee	1.14 (2.6%)	5.77 (13.1%)	10.5 (23.9%)	0.38 (0.9%)	1.84 (4.2%)	3.91 (8.9%)	8.22 (18.7%)	4.02 (9.1%)	1.7 (3.9%)	6.69 (15.2%)
Peoria	7.64 (4.3%)	25.81 (14.6%)	32.14 (18.2%)	2.16 (1.2%)	7.57 (4.3%)	19.38 (11%)	33.65 (19.1%)	19.35 (11%)	7.75 (4.4%)	20.81 (11.8%)
Rockford	4.48 (3%)	32.57 (21.5%)	29.07 (19.2%)	1.41 (0.9%)	5.46 (3.6%)	16.03 (10.6%)	23.53 (15.6%)	13.34 (8.8%)	8.73 (5.8%)	16.59 (11%)
Springfield	4.45 (4%)	2.96 (2.7%)	17.75 (16%)	1.63 (1.5%)	6.99 (6.3%)	10.49 (9.4%)	20.82 (18.7%)	10.46 (9.4%)	6.43 (5.8%)	29.27 (26.3%)
IL	210.75 (3.6%)	571.16 (9.7%)	1186.31 (20.1%)	97.38 (1.6%)	369.72 (6.3%)	933.34 (15.8%)	894.49 (15.1%)	563.16 (9.5%)	250.52 (4.2%)	826.76 (14%)

\*The Illinois Department of Employment Security does not collect sector employment data for Metro-East

### Total non-farm Employment growth rate Jan 1990 – August 2015



MSA DESCRIPTION: **Bloomington-Normal (B-N):** McLean Co. **Champaign-Urbana (C-U-R):** Champaign Co., Ford Co. & Piatt Co. **Chicago:** Cook Co. IL, DeKalb Co. IL, DuPage Co. IL, Grundy Co. IL, Kane Co. IL, Kendall Co. IL, Lake Co. IL, McHenry Co. IL, Will Co. IL & Kenosha Co. WI **Davenport-Moline-Rock Island (D-R-M):** Henry Co. IL, Mercer Co. IL, Rock Island Co. IL & Scott Co. IA **Decatur:** Macon Co. **Kankakee:** Kankakee Co. **Metro-East:** Bond Co., Calhoun Co., Clinton Co., Jersey Co., Macoupin Co., Madison Co., Monroe Co. & St. Clair Co. **Peoria-Pekin (Peoria):** Marshall Co., Peoria Co., Stark Co., Tazewell Co. & Woodford Co. **Rockford:** Boone Co. & Winnebago Co. **Springfield:** Menard Co. & Sangamon Co. The MSA data (unless noted) were seasonally adjusted to be consistent with state totals.

# Employment Forecast for MSAs

MSAs	August 2015*	August 2016 (p)*	Number of Jobs *	Growth Rate %	Growth	Sector with Highest Growth Rate (p)	Sector with Lowest Growth Rate (p)
Bloomington-Normal	95,200	95,700	460 ~ 500	0.48%~0.57%	+	GOV (3.17%)	INF (-13.31%)
Champaign-Urbana-Rantoul	108,400	108,700	300~600	0.25%~0.56%	+	EDU (2.50%)	MAN (-2.43%)
Chicago	4,023,100	4,083,900	47,100~60,700	1.17%~1.51%	+	CON (4.94%)	MAN (-1.26%)
Davenport-Rock Island-Moline	180,000	177,600	-2,400~ -1,600	-1.34%~ -0.91%	-	CON (0.55%)	EDU (-5.05%)
Decatur	50,700	50,400	-300~-100	-0.56%~-0.13%	-	LEI (1.93%)	INF (-4.93%)
Kankakee	44,000	44,100	100~110	0.11%~ 0.26%	+	INF (8.31%)	PRO (-2.57%)
Peoria	176,200	177,000	800~1,200	0.45%~ 0.69%	+	PRO (2.61%)	CON (-1.48%)
Rockford	151,200	150,800	-500~-400	-0.31%~-0.25%	-	EDU (1.78%)	CON (-6.31%)
Springfield	111,300	111,400	100~300	0.11%~ 0.27%	+	EDU (2.42%)	INF (-4.20%)

\*Total Non-Farm Jobs

