

ILLINOIS

MSA Indices & Forecast

R | E | A | L

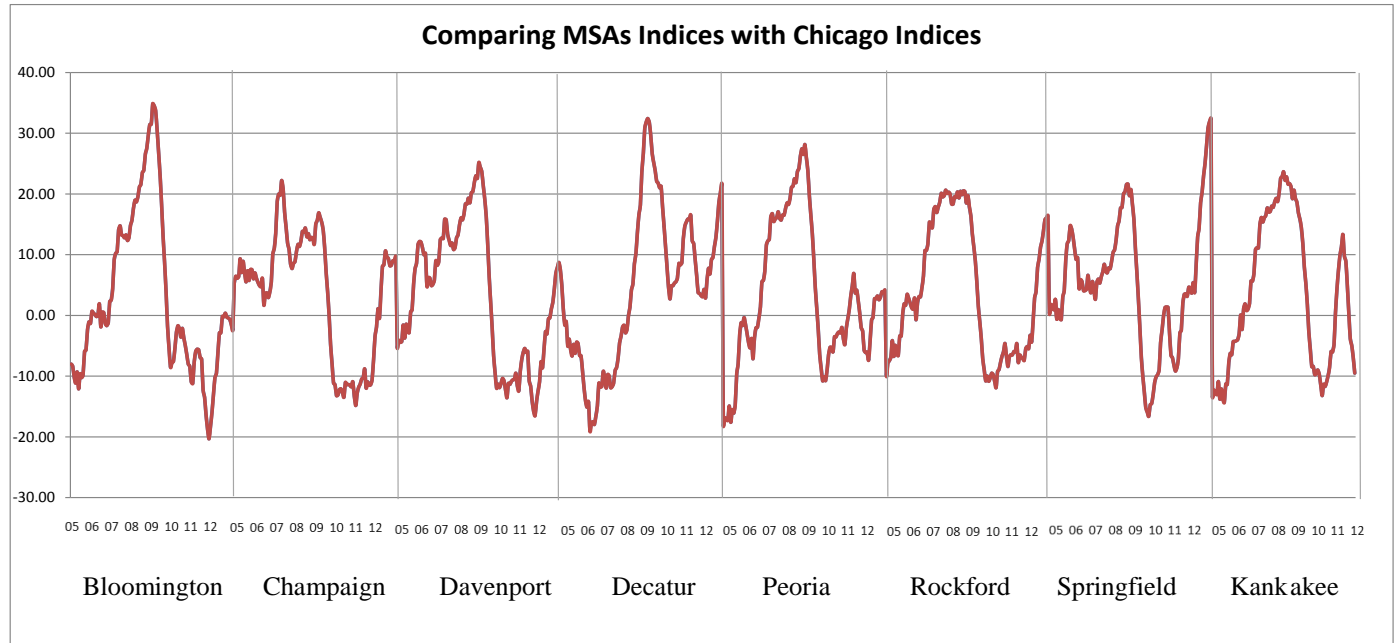
Release
08/15/2012

data
May 2004 / Jun 2012

Issue
2012.07

www.real.illinois.edu

Note: Values shown on the "1 Year" forecast represent a pessimistic – optimistic scenario. For estimated values please see Appendix.

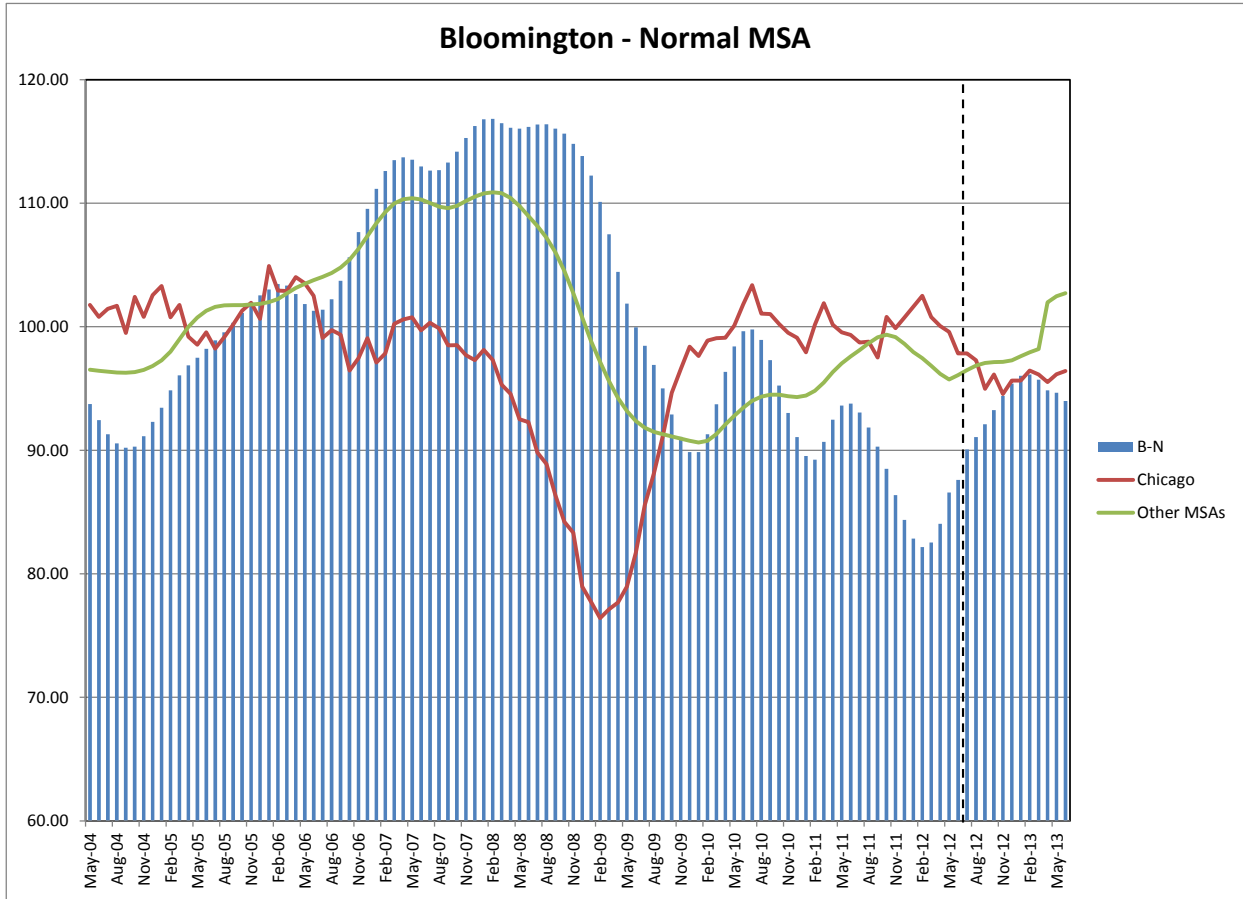


*When figures dropping zero represents that MSAs are doing worse than Chicago; when figures rising above zero represents that MSAs are doing better than Chicago.

- Before Jan 2008, MSA Decatur performed worse than Chicago. However, after Jan 2008, it started performing better than Chicago.
- From the beginning of 2007 to mid-2009, MSA Bloomington, Champaign-Urbana-Rantoul, Davenport, Peoria, Rockford, Springfield and Kankakee-Bradley performed better than Chicago.
- However, from Mid-2009 to late-2011, these MSAs performed worse than Chicago.
- According to the forecast for Jun 2013, MSA Champaign-Urbana-Rantoul, Davenport-Rock Island-Moline, Decatur, Peoria, Rockford, Springfield and Kankakee will do better than Chicago by May 2013. MSA Bloomington and Kankakee might perform worse than Chicago.

❖ **Bloomington-Normal (Reference Month – Jun 2012)**

Current	87.60		
	1 Month	3 Month	1 Year
Historical	86.58	82.53	93.77
Forecast	90.06	92.11	88.34 ~ 101.14

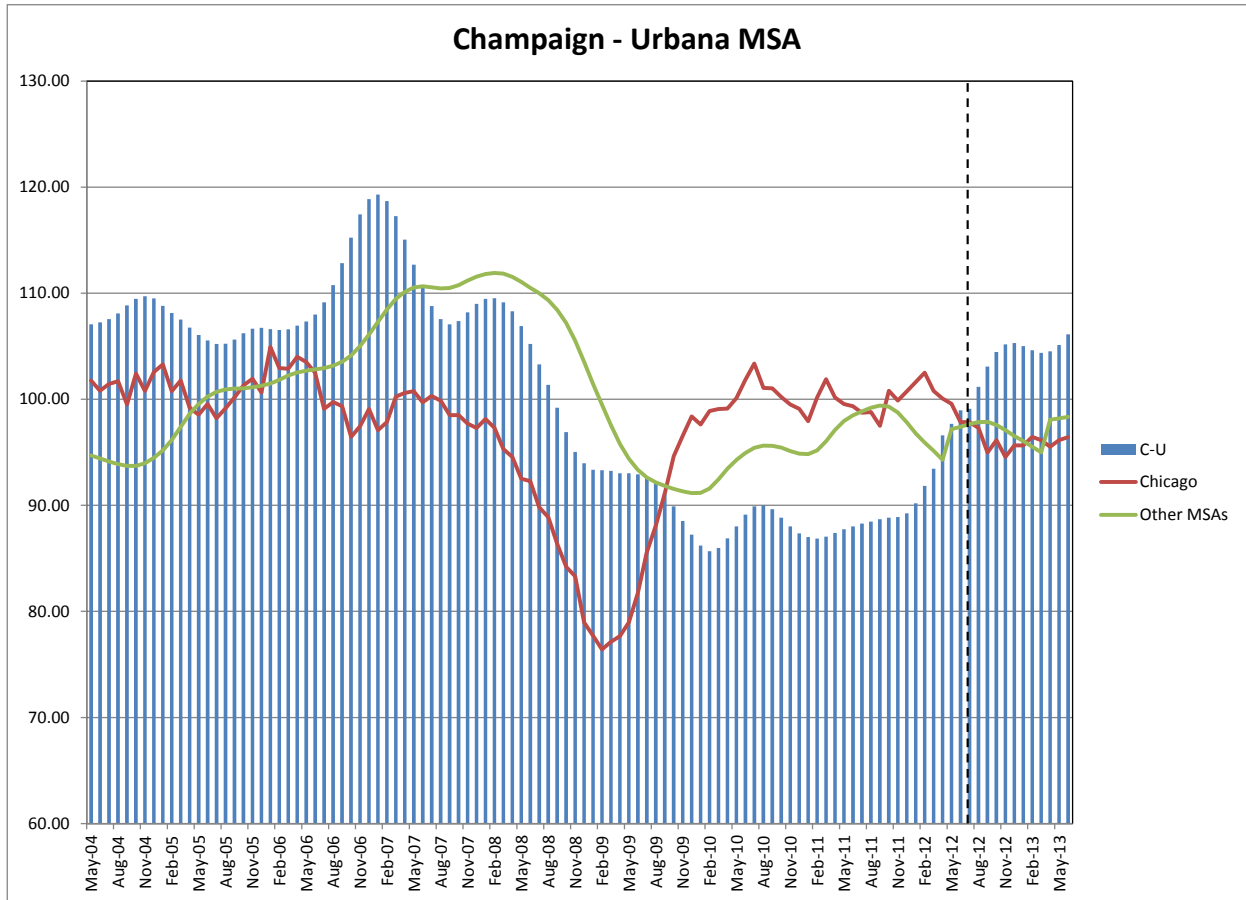


Bloomington-Normal MSA League: Non-Farm Employment Growth Rate:

- Bloomington-Normal in June dropped by moving down 5 positions reaching the 6th place of the rank.
- In the 12 month growth league table Bloomington-Normal moving up 1 position reaching the 5th place of the rank.

❖ **Champaign-Urbana (Reference Month – Jun 2012)**

Current	98.96		
	1 Month	3 Month	1 Year
Historical	97.68	93.46	88.02
Forecast	99.10	103.08	96.92 ~ 109.49

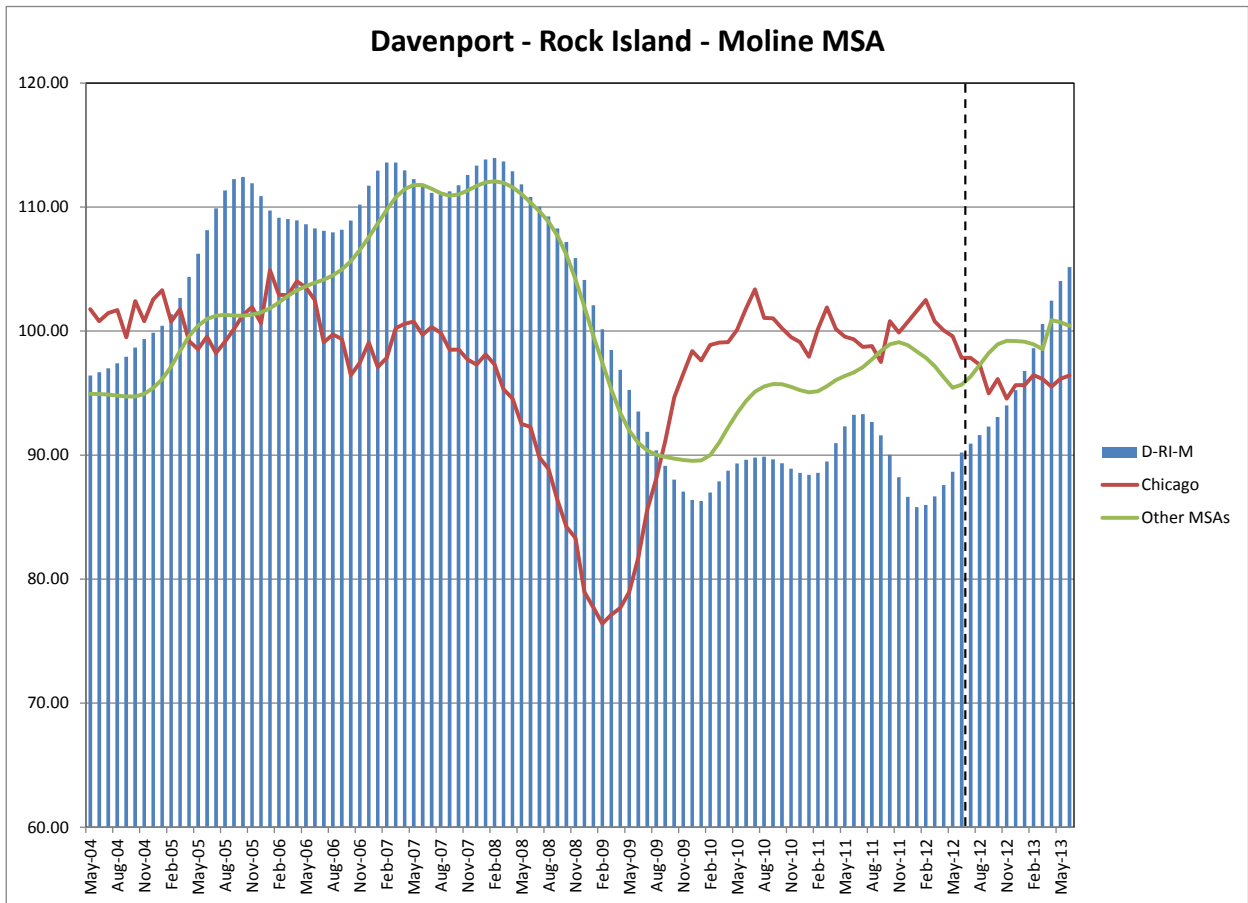


Champaign- Urbana MSA League: Non-Farm Employment Growth Rate:

- Champaign-Urbana-Rantoul lost in June by moving down 2 positions reaching the 5th place in the rank.
- In the 12 months growth league table, Champaign-Urbana-Rantoul remained in the 9th place of the rank.

❖ **Davenport-Rock Island-Moline (Reference Month – Jun 2012)**

Current	90.20		
	1 Month	3 Month	1 Year
Historical	88.65	86.67	93.26
Forecast	90.93	92.30	98.86 ~ 112.49

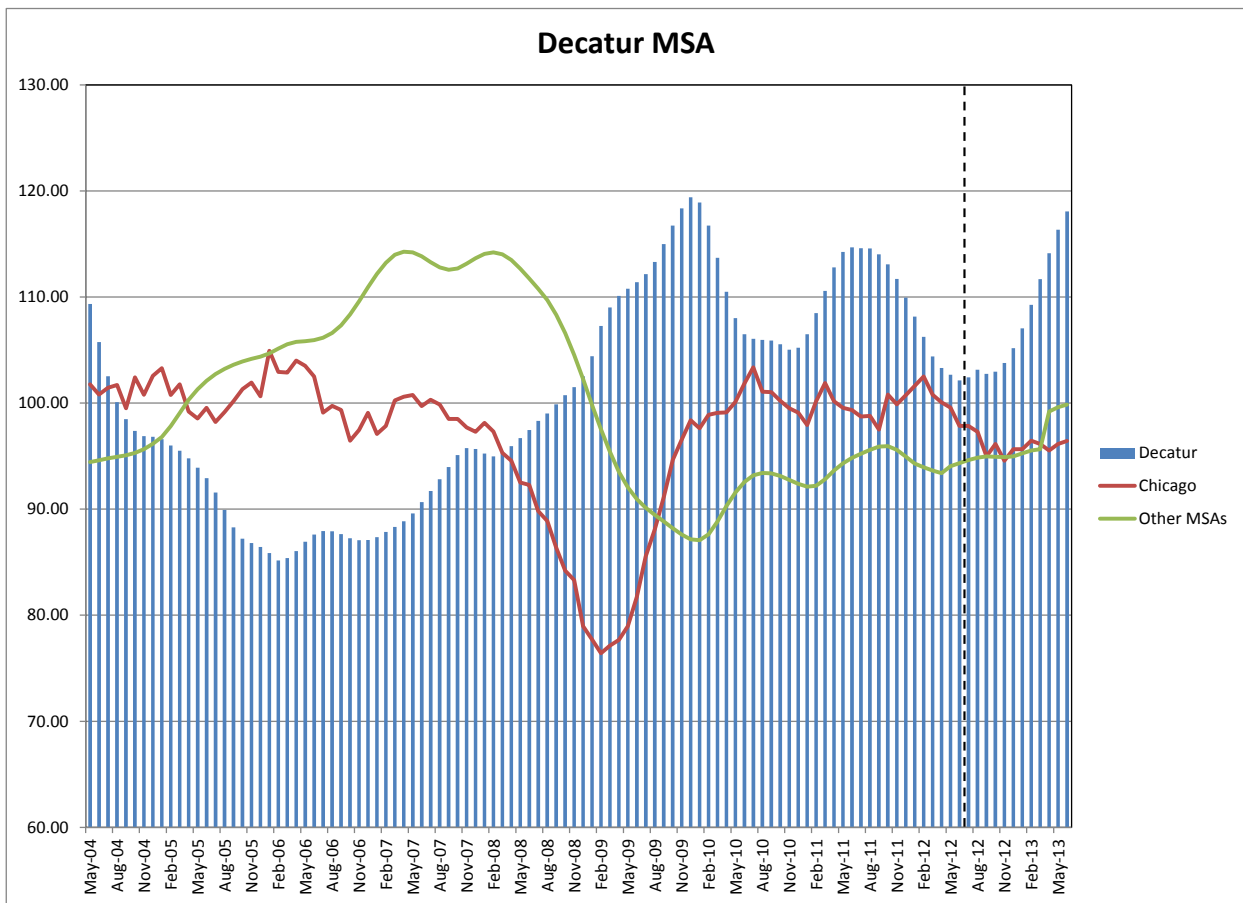


Davenport – Rock Island–Moline MSA League: Non-Farm Employment Growth Rate:

- Davenport-Rock Island-Moline in June gained 5 positions reaching the 1st place in the rank.
- In the 12 months growth league table, Davenport – Rock Island – Moline moved up 3 positions to the 7th place in the rank.

❖ **Decatur (Reference Month – Jun 2012)**

Current	102.14		
	1 Month	3 Month	1 Year
Historical	102.66	104.39	114.69
Forecast	102.43	102.75	110.75 ~ 121.04

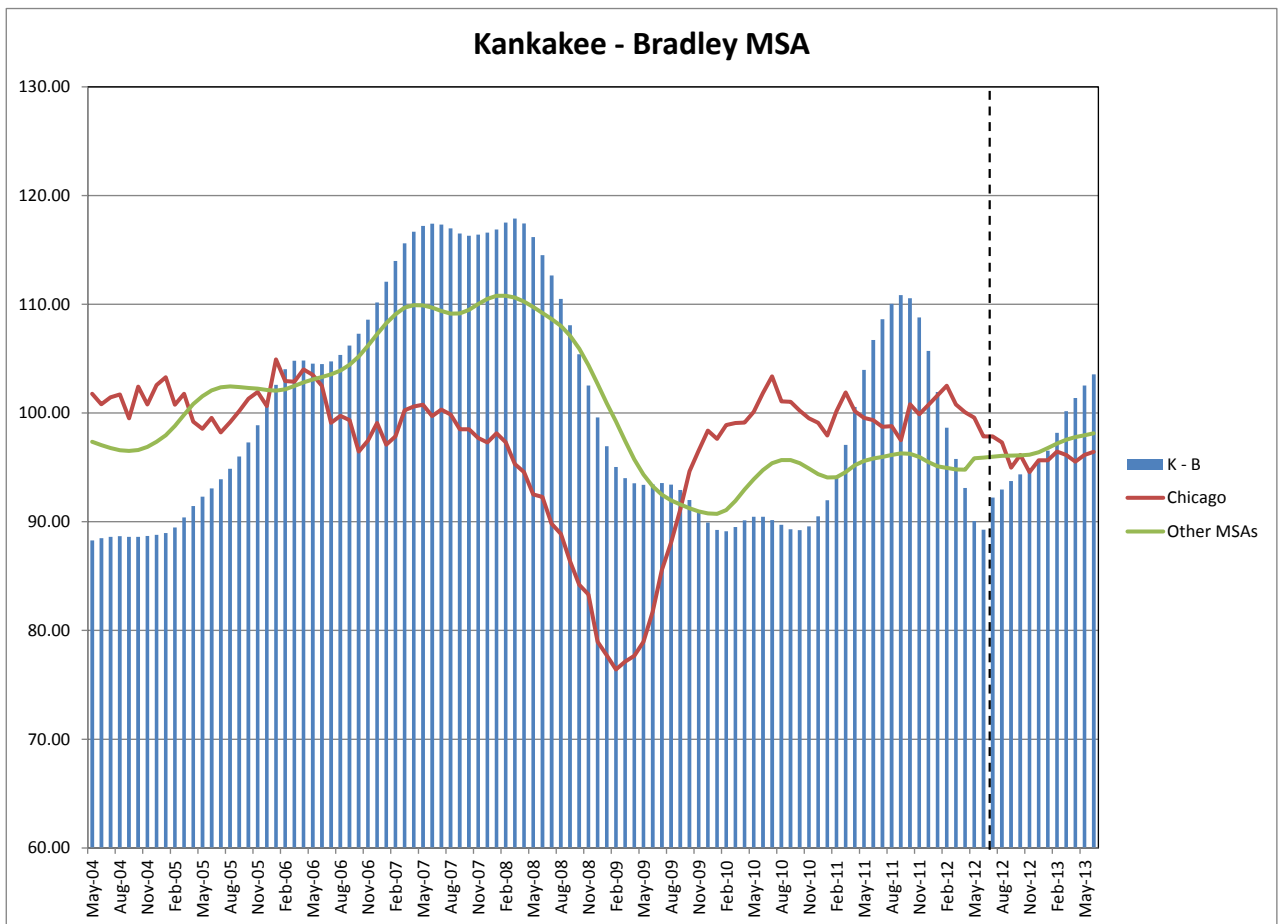


Decatur MSA League: Non-Farm Employment Growth Rate

- Decatur in June moved up 1 position to the 9th place in the rank.
- In the 12 months growth league table, Decatur moving down 3 positions to the last place in the rank.

❖ **Kankakee - Bradley (Reference Month – Jun 2012)**

Current	89.26		
	1 Month	3 Month	1 Year
Historical	90.07	93.11	100.56
Forecast	92.23	93.74	92.34 ~ 105.60

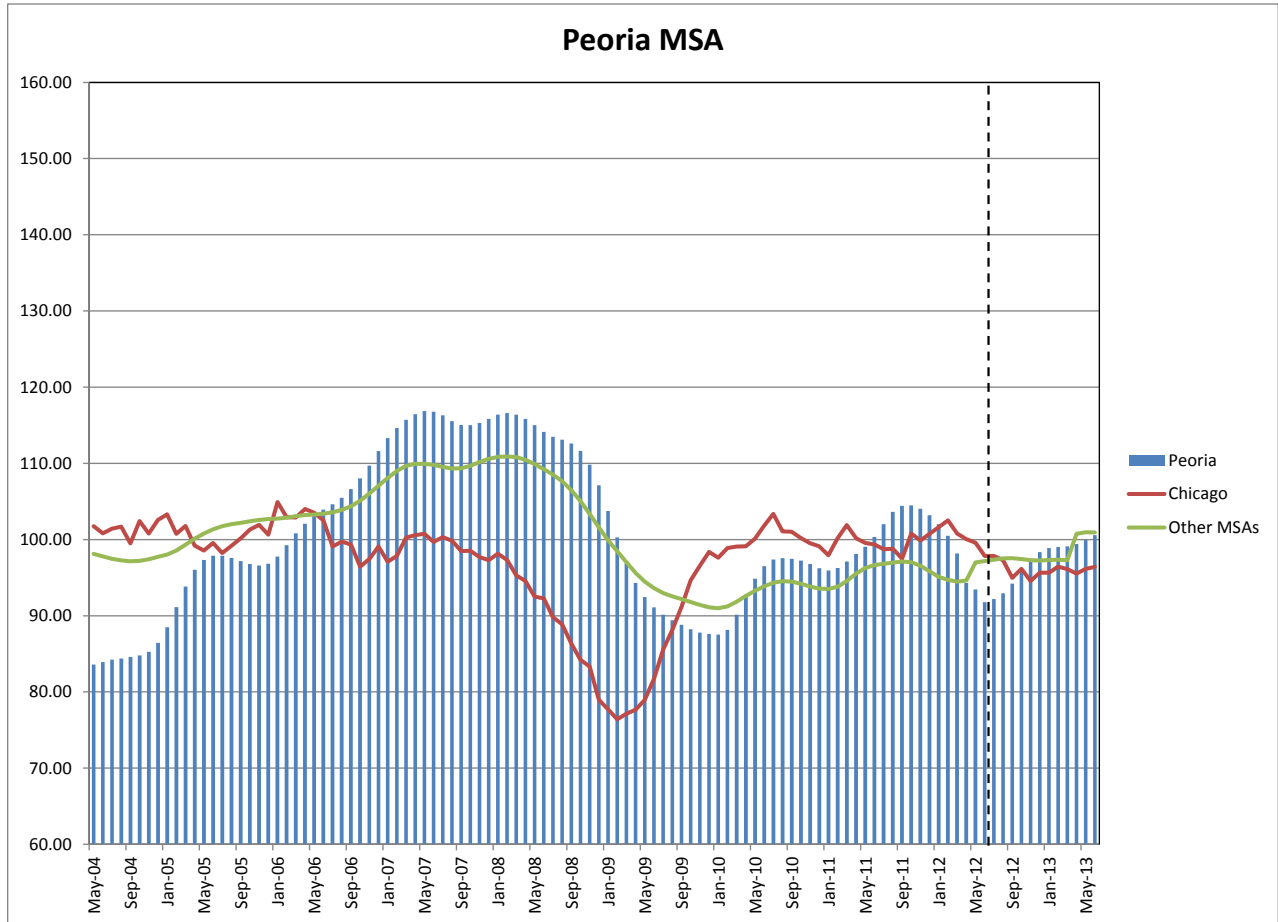


Kankakee - Bradley MSA League: Non-Farm Employment Growth Rate

- Kankakee – Bradley moved down 6 positions reaching the last place in the rank.
- In the 12 months growth league table, Kankakee– Bradley moved down 2 positions to the 3rd position of the rank.

❖ **Peoria (Reference Month – Jun 2012)**

Current	91.78		
	1 Month	3 Month	1 Year
Historical	93.44	98.17	100.35
Forecast	92.18	94.22	95.46 ~ 105.58

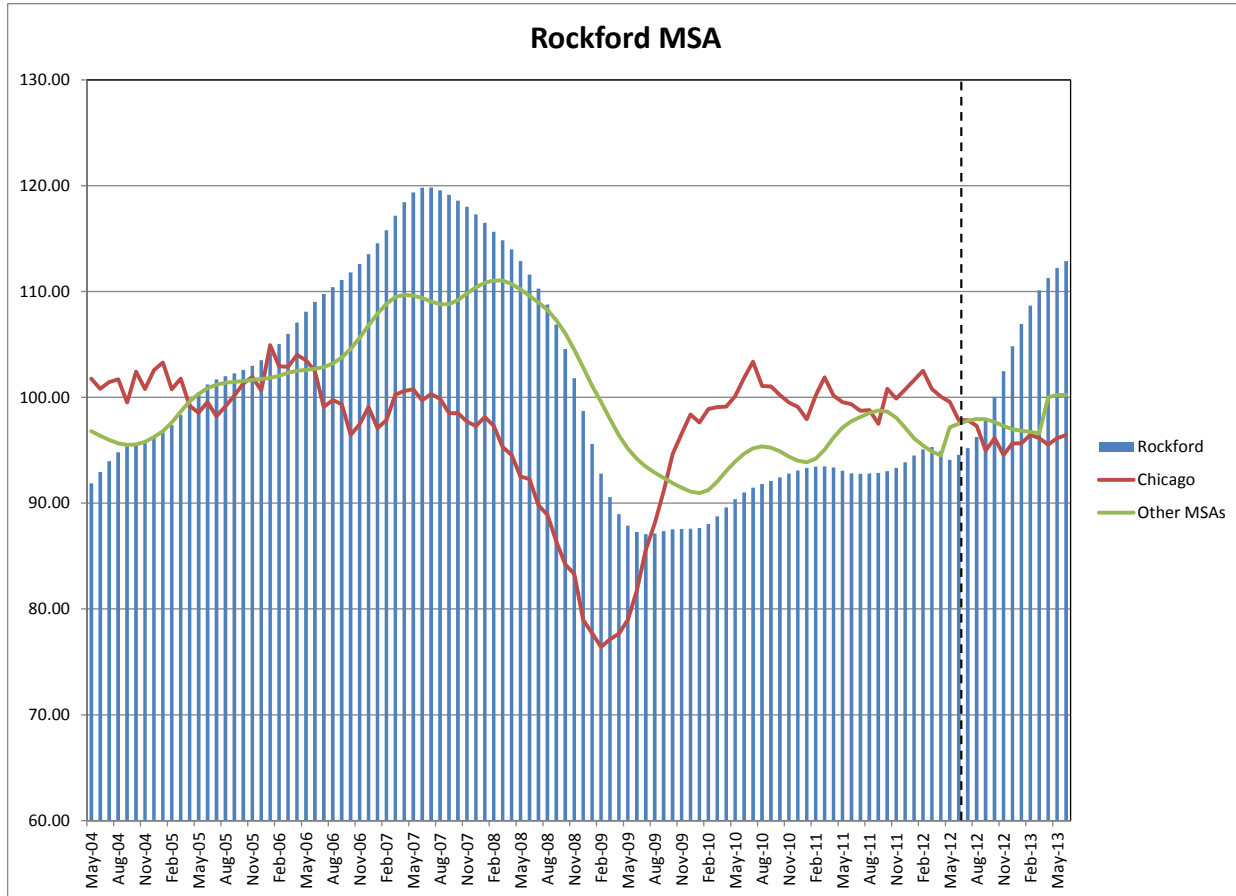


Peoria MSA League: Non-Farm Employment Growth Rate

- Peoria in May moved up 1 position reaching the 4th place in the rank.
- In the 12 months growth league table, Peoria moved up 1 position to the 1st place in the rank.

❖ **Rockford (Reference Month – Jun 2012)**

Current	94.57		
	1 Month	3 Month	1 Year
Historical	94.09	95.31	93.37
Forecast	95.19	97.88	102.70 ~ 114.98

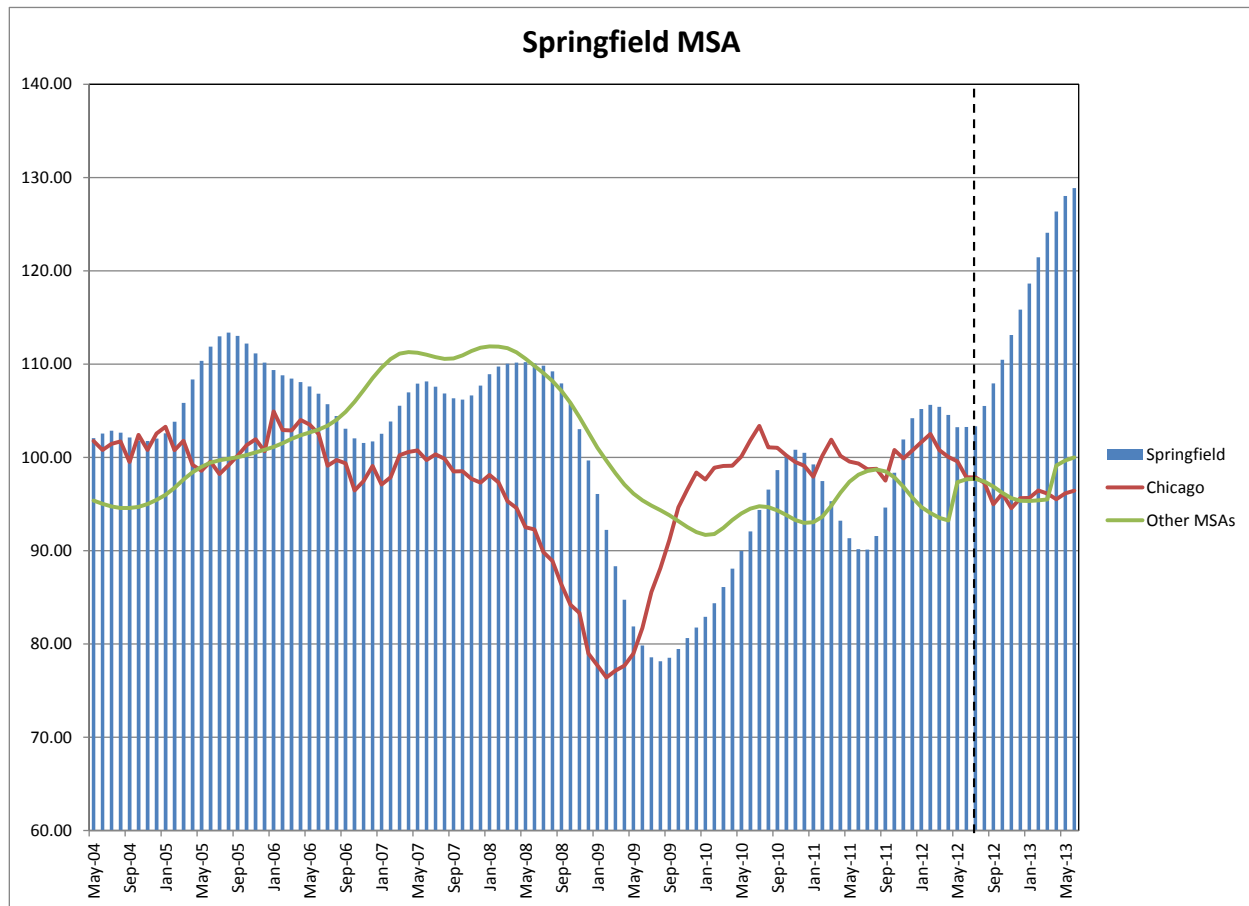


Rockford MSA League: Non-Farm Employment Growth Rate

- Rockford lost in June by moving down 6 positions, reaching the 8th place of the rank.
- In the 12 months growth league table, Rockford climbed up 1 position, reaching the 2nd place in the rank.

❖ **Springfield (Reference Month – Jun 2012)**

Current	103.26		
	1 Month	3 Month	1 Year
Historical	103.24	105.41	90.16
Forecast	103.34	107.92	116.28 ~ 132.84



Springfield MSA League: Non-Farm Employment Growth Rate

- Springfield gained 4 positions in the rank of June to the 3rd place.
- In the 12 months growth league table Springfield remained in the 8th place in the rank.

Notes:

- MSA Indices series are available in the appendix.

Appendix

month	B - N	C - U	D-RI-M	Decatur	Peoria	Rockford	Springfield	K-B
May-04	93.75	107.07	96.42	109.35	83.58	91.87	102.05	88.28
Jun-04	92.43	107.25	96.68	105.75	83.91	92.93	102.56	88.48
Jul-04	91.29	107.55	96.99	102.53	84.24	93.98	102.87	88.61
Aug-04	90.56	108.09	97.40	100.09	84.39	94.81	102.66	88.67
Sep-04	90.21	108.84	97.92	98.49	84.59	95.35	102.12	88.62
Oct-04	90.30	109.47	98.66	97.37	84.80	95.65	101.80	88.61
Nov-04	91.15	109.71	99.35	96.89	85.26	95.88	101.75	88.69
Dec-04	92.30	109.51	99.86	96.82	86.45	96.20	102.01	88.79
Jan-05	93.43	108.80	100.43	96.60	88.49	96.66	102.59	88.95
Feb-05	94.85	108.13	101.36	96.01	91.12	97.38	103.82	89.48
Mar-05	96.06	107.51	102.66	95.51	93.83	98.35	105.84	90.39
Apr-05	96.87	106.75	104.36	94.80	96.04	99.46	108.35	91.45
May-05	97.50	106.06	106.24	93.91	97.33	100.46	110.34	92.30
Jun-05	98.21	105.54	108.14	92.92	97.88	101.21	111.88	93.07
Jul-05	98.89	105.22	109.90	91.56	97.88	101.69	112.98	93.90
Aug-05	99.55	105.24	111.33	89.92	97.58	101.99	113.38	94.86
Sep-05	100.33	105.62	112.26	88.29	97.19	102.26	113.01	95.99
Oct-05	101.11	106.22	112.43	87.22	96.81	102.58	112.20	97.30
Nov-05	101.96	106.66	111.91	86.81	96.58	102.98	111.14	98.88
Dec-05	102.54	106.73	110.88	86.43	96.82	103.50	110.16	100.72
Jan-06	103.01	106.61	109.72	85.86	97.76	104.19	109.35	102.59
Feb-06	103.45	106.53	109.14	85.17	99.26	105.03	108.80	104.02
Mar-06	103.33	106.60	109.03	85.38	100.82	106.00	108.44	104.80
Apr-06	102.65	106.93	108.92	86.05	102.07	107.07	108.07	104.82
May-06	101.83	107.33	108.61	86.93	103.08	108.09	107.59	104.55
Jun-06	101.29	107.99	108.28	87.60	103.91	109.01	106.83	104.49
Jul-06	101.37	109.13	108.07	87.92	104.62	109.76	105.70	104.75
Aug-06	102.22	110.76	107.96	87.92	105.47	110.42	104.43	105.35
Sep-06	103.72	112.84	108.17	87.65	106.63	111.09	103.08	106.21
Oct-06	105.61	115.23	108.91	87.26	108.03	111.81	102.04	107.29
Nov-06	107.67	117.43	110.19	87.08	109.71	112.61	101.56	108.58
Dec-06	109.55	118.87	111.72	87.09	111.60	113.52	101.72	110.17
Jan-07	111.17	119.30	112.94	87.36	113.31	114.56	102.54	112.07
Feb-07	112.61	118.68	113.59	87.84	114.62	115.78	103.84	113.98
Mar-07	113.49	117.26	113.59	88.32	115.71	117.17	105.54	115.60
Apr-07	113.72	115.05	112.95	88.85	116.45	118.44	106.97	116.68
May-07	113.52	112.69	112.25	89.60	116.87	119.37	107.91	117.20
Jun-07	112.97	110.52	111.63	90.66	116.78	119.81	108.13	117.42
Jul-07	112.63	108.79	111.15	91.71	116.29	119.83	107.58	117.33
Aug-07	112.67	107.56	111.02	92.82	115.55	119.57	106.85	116.97
Sep-07	113.29	107.06	111.26	93.96	115.04	119.14	106.33	116.50
Oct-07	114.18	107.37	111.76	95.09	115.01	118.58	106.19	116.30
Nov-07	115.28	108.19	112.59	95.76	115.32	118.01	106.64	116.41
Dec-07	116.25	108.99	113.35	95.67	115.83	117.28	107.70	116.58
Jan-08	116.79	109.47	113.84	95.24	116.39	116.48	108.92	116.87
Feb-08	116.82	109.53	113.96	94.96	116.59	115.64	109.73	117.50

Mar-08	116.48	109.14	113.68	95.28	116.40	114.85	110.05	117.88
Apr-08	116.10	108.29	112.89	95.93	115.83	113.98	110.15	117.43
May-08	116.04	106.91	111.84	96.69	115.02	112.87	110.20	116.18
Jun-08	116.17	105.21	110.81	97.46	114.13	111.61	110.07	114.51
Jul-08	116.37	103.30	110.03	98.31	113.50	110.26	109.84	112.64
Aug-08	116.38	101.35	109.25	99.02	113.10	108.76	109.23	110.49
Sep-08	116.04	99.20	108.28	99.89	112.61	106.88	107.92	108.07
Oct-08	115.63	96.90	107.19	100.73	111.64	104.56	105.82	105.40
Nov-08	114.81	95.04	105.88	101.49	109.83	101.80	103.02	102.52
Dec-08	113.81	93.98	104.12	102.54	107.11	98.71	99.68	99.60
Jan-09	112.23	93.36	102.09	104.41	103.75	95.58	96.07	96.95
Feb-09	110.10	93.31	100.14	107.27	100.27	92.79	92.23	95.03
Mar-09	107.48	93.25	98.47	109.01	96.88	90.57	88.33	94.01
Apr-09	104.44	93.03	96.88	110.09	94.29	88.95	84.74	93.53
May-09	101.86	93.03	95.25	110.77	92.45	87.87	81.87	93.40
Jun-09	99.96	92.91	93.52	111.40	91.10	87.28	79.83	93.43
Jul-09	98.46	92.58	91.88	112.15	90.13	87.06	78.58	93.55
Aug-09	96.91	92.06	90.38	113.31	89.40	87.14	78.15	93.41
Sep-09	95.00	91.10	89.12	114.98	88.80	87.35	78.53	92.92
Oct-09	92.89	89.90	88.03	116.74	88.22	87.53	79.46	92.01
Nov-09	91.09	88.53	87.05	118.35	87.80	87.57	80.63	90.96
Dec-09	89.85	87.24	86.39	119.39	87.60	87.58	81.76	89.93
Jan-10	89.86	86.21	86.31	118.90	87.53	87.65	82.92	89.24
Feb-10	91.30	85.66	86.98	116.74	88.13	88.03	84.36	89.12
Mar-10	93.73	85.98	87.89	113.69	90.12	88.75	86.11	89.51
Apr-10	96.35	86.89	88.74	110.49	92.65	89.59	88.07	90.14
May-10	98.40	88.00	89.32	108.00	94.85	90.36	89.99	90.47
Jun-10	99.64	89.13	89.62	106.49	96.50	91.00	92.05	90.45
Jul-10	99.78	89.90	89.81	106.06	97.38	91.46	94.35	90.15
Aug-10	98.94	90.02	89.88	105.94	97.56	91.82	96.55	89.71
Sep-10	97.29	89.63	89.66	105.90	97.46	92.10	98.64	89.32
Oct-10	95.24	88.84	89.35	105.54	97.23	92.43	100.15	89.22
Nov-10	93.03	88.01	88.90	105.04	96.78	92.79	100.82	89.57
Dec-10	91.08	87.35	88.57	105.22	96.22	93.09	100.50	90.51
Jan-11	89.54	87.00	88.41	106.49	95.95	93.32	99.25	91.98
Feb-11	89.23	86.87	88.56	108.48	96.28	93.46	97.46	94.11
Mar-11	90.68	87.05	89.48	110.58	97.10	93.48	95.31	97.07
Apr-11	92.47	87.39	90.97	112.79	98.12	93.37	93.22	100.56
May-11	93.62	87.75	92.32	114.25	99.05	93.07	91.34	103.96
Jun-11	93.77	88.02	93.26	114.69	100.35	92.82	90.16	106.72
Jul-11	93.06	88.27	93.29	114.59	102.02	92.78	90.11	108.62
Aug-11	91.84	88.47	92.67	114.58	103.63	92.79	91.58	110.03
Sep-11	90.30	88.69	91.59	114.03	104.42	92.86	94.62	110.83
Oct-11	88.50	88.83	90.03	113.09	104.48	93.03	98.35	110.56
Nov-11	86.38	88.90	88.21	111.70	104.05	93.33	101.92	108.78
Dec-11	84.36	89.24	86.63	109.93	103.19	93.86	104.21	105.71
Jan-12	82.85	90.20	85.81	108.16	102.02	94.49	105.18	101.93
Feb-12	82.16	91.84	85.98	106.25	100.49	95.07	105.64	98.65
Mar-12	82.53	93.46	86.67	104.39	98.17	95.31	105.41	95.78

Apr-12	84.05	96.59	87.59	103.31	94.31	94.92	104.55	93.11
May-12	86.58	97.68	88.65	102.66	93.44	94.09	103.24	90.07
Jun-12	87.60	98.96	90.20	102.14	91.78	94.57	103.26	89.26
Jul-12	90.06	99.10	90.93	102.43	92.18	95.19	103.34	92.23
Aug-12	91.07	101.17	91.62	103.14	92.95	96.24	105.52	92.97
Sep-12	92.11	103.08	92.30	102.75	94.22	97.88	107.92	93.74
Oct-12	93.24	104.46	93.07	102.96	95.80	100.04	110.47	94.35
Nov-12	94.39	105.18	94.01	103.78	97.31	102.46	113.12	94.85
Dec-12	95.39	105.30	95.23	105.17	98.36	104.82	115.85	95.48
Jan-13	96.03	105.02	96.78	107.03	98.87	106.91	118.64	96.53
Feb-13	96.14	104.62	98.61	109.26	99.02	108.66	121.44	98.18
Mar-13	95.71	104.38	100.57	111.69	99.12	110.10	124.08	100.17
Apr-13	94.85	104.52	102.45	114.13	99.41	111.28	126.36	101.37
May-13	94.66	105.11	104.03	116.33	99.93	112.21	128.02	102.54
Jun-13	93.98	106.11	105.15	118.06	100.58	112.86	128.88	103.55

Notes

B-N=Bloomington-Normal

C-U=Champaign-Urbana

K-B= Kankakee-Bradley

D-RI-M=Davenport-Rock Island-Moline